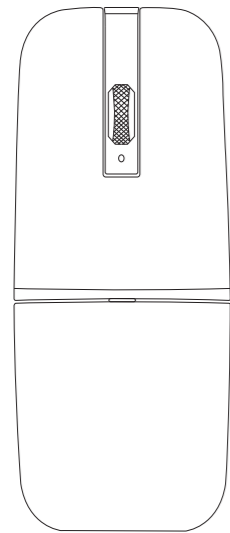


Dual mode charging Wireless Mouse

Quick installation guide

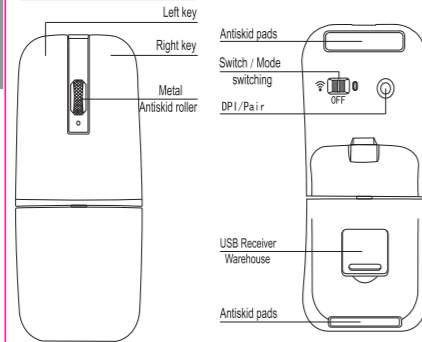
M9



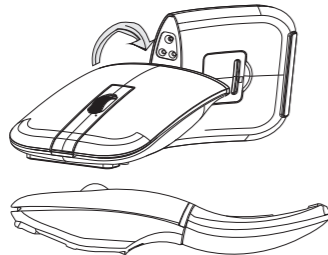
2.4G

Bluetooth

Functional introduction



Rotated body



M9 Mouse tail rotates 180 degrees to the right, is fat, easy to carry, whether in the pocket or in the computer bag is convenient and simple display grade.

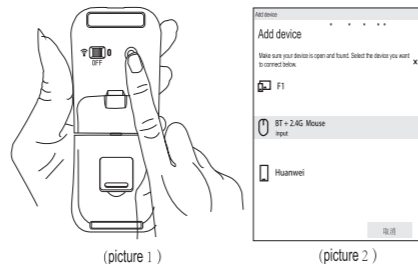
Usage method

2. 4G Wireless connection

1. remove the receiver from the mouse (USB receiver bin) and insert it into the USB interface of the computer (device).
2. Turn on the mouse power switch within a distance of less than 30 cm from the mouse receiver (move the switch to the ON). Then press the button of the mouse button at random.

Bluetooth connectivity

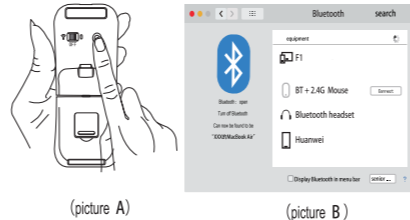
windows10



Connection steps:

1. turn on the mouse power switch. (switch the switch to ON to start the mouse Bluetooth).
2. click on the start of the lower right corner of the computer Settings -> devices -> add Bluetooth or other devices. Bluetooth (when the computer starts searching for Bluetooth mouse).
3. Press and hold the pairing button (Fig. 1) for 3-5 seconds and then release. A quick blue flash prompt is emitted inside the mouse to indicate The Bluetooth mouse is successfully launched, and the computer starts to search the Bluetooth mouse. It will soon be searched by the computer.
4. after searching the Bluetooth mouse, the computer will display BT+2.4G Mouse (Figure 2). Click this device to automatically. Paired connection and display connected, ready for immediate use.

Mac



Connection steps:

1. turn on the mouse power switch. (switch the switch to ON here is to start mouse Bluetooth).
2. click the Apple Computer icon on the upper left corner of the MAC - System Preferences - Bluetooth (MAC Bluetooth instantly). Start searching for Bluetooth mouse.
3. Press and hold the pairing button (Fig. A) for 3-5 seconds and then release. The mouse sends out a quick blue flash to indicate The Bluetooth mouse was successfully launched, and MAC began to search the Bluetooth mouse. It will soon be searched by MAC.
4. when the computer searches the Bluetooth mouse, it displays the BT+2.4G Mouse (Figure B). Paired connection, and will display connected, now normal use.

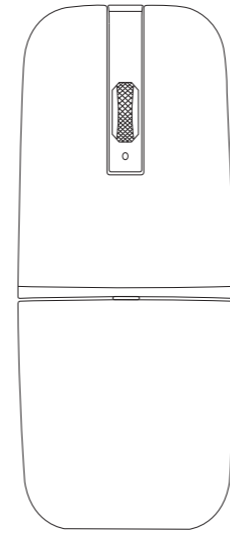
Other functions

DPI/ sensitivity adjustment: touch lightly (DPI/ pairing) button to adjust DPI/ sensitivity. The value is 1 times 1000, 2 times 1600, 3 times 2400.3. Ring switching.
 2.4 wireless * Bluetooth switch: in connection with 2.4G wireless mode and Bluetooth mode. You can switch freely according to your needs, for example, if you want to use Bluetooth mode, you will toggle the switch Switch to the Bluetooth side. If you want to use the 2.4G wireless mode, switch the switch to 2.4G wireless. That way.
 Turn off the mouse: if you don't use the mouse temporarily, you can toggle the toggle switch to the middle. The position (OFF) can turn off the mouse power, which can save power and prevent misuse.

双模充电无线鼠标

快速安装指南

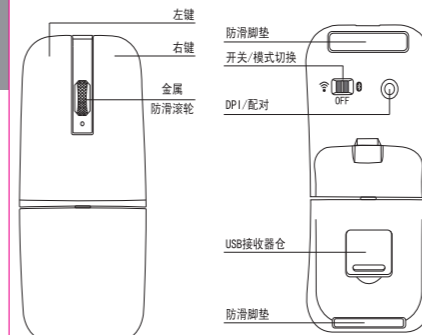
M9



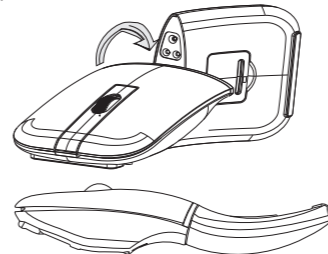
2.4G

蓝牙

功能介绍



旋转变身



M9鼠标尾部向右旋转180度可变身平盘，易于携带，不管是装入口袋还是电脑包中都显得方便简洁档次。

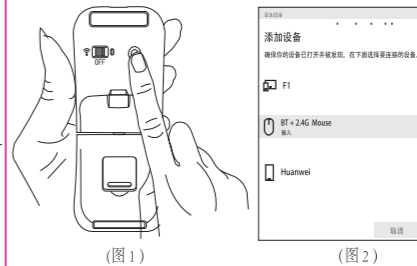
使用方法

2. 4G无线连接

1. 从鼠标(USB接收器仓)内取出接收器，并插入电脑(设备)的USB接口内。
2. 在离鼠标接收器≤30cm的距离内开启鼠标电源开关(将开关拨动往ON这边)，然后随意按下鼠标按键即可使用了。

蓝牙连接

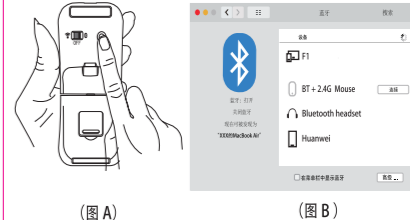
windows10



连接步骤:

1. 开启鼠标电源开关(将开关拨动往ON这边即为启动鼠标蓝牙)
2. 点击电脑右下角的开始 -> 设置 -> 设备 -> 添加蓝牙或者其他设备 -> 蓝牙 (此时电脑开始搜索蓝牙鼠标)。
3. 按住配对按钮(图1) 3-5秒钟后松开，鼠标内发出快速蓝色闪光灯提示，表示成功启动蓝牙鼠标，电脑开始搜索蓝牙鼠标，很快就会被电脑搜索到了。
4. 电脑搜索到蓝牙鼠标后，会显示BT+2.4G Mouse(图2)，点击此设备即可自动配对连接，并显示已连接，即刻可以使用了。

Mac



连接步骤:

1. 开启鼠标电源开关(将开关拨动往ON这边即为启动鼠标蓝牙)
2. 点击MAC左上角的苹果电脑图标 -> 系统偏好设置 -> 蓝牙，(MAC蓝牙即刻开始搜索蓝牙鼠标)。
3. 按住配对按钮(图A) 3-5秒钟后松开，鼠标内发出快速蓝色闪光灯提示，表示成功启动蓝牙鼠标，MAC开始搜索蓝牙鼠标，很快就会被MAC搜索到了。
4. 电脑搜索到蓝牙鼠标后，会显示BT+2.4G Mouse(图B)，点击此设备即可自动配对连接，并显示已连接，现在即可正常使用了。

其他功能

DPI/灵敏度调节: 轻触一下(DPI/配对)按钮即可调节DPI/灵敏度数值，提示灯闪1次是1000，闪2次是1600，闪3次是2400.3档循环切换。
 2.4无线*蓝牙切换: 在连接好2.4G无线模式和蓝牙模式的情况下可以根据您的需要随意切换，比如想用蓝牙模式，就将拨动开关往蓝牙这边拨动，如想用2.4G无线模式，就将开关拨到2.4G无线那一边即可。
 关闭鼠标: 在暂时不使用鼠标的情况下，可将拨动开关拨到中间位置(OFF)，即可关闭鼠标电源，可节省电量及误按。

This device complies with part 15 of the FCC Rules. Operation is subject to the following two conditions: (1) this device may not cause harmful interference, and (2) this device must accept any interference received, including interference that may cause undesired operation.

Any changes or modifications not expressly approved by the party responsible for compliance could void the user's authority to operate the equipment.

NOTE: This equipment has been tested and found to comply with the limits for a Class B digital device, pursuant to Part 15 of the FCC Rules. These limits are designed to provide reasonable protection against harmful interference in a residential installation. This equipment generates, uses and can radiate radio frequency energy and, if not installed and used in accordance with the instructions, may cause harmful interference to radio communications.

However, there is no guarantee that interference will not occur in a particular installation.

If this equipment does cause harmful interference to radio or television reception, which can be determined by turning the equipment off and on, the user is encouraged to try to correct the interference by one or more of the following measures:

- Reorient or relocate the receiving antenna.
- Increase the separation between the equipment and receiver.
- Connect the equipment into an outlet on a circuit different from that to which the receiver is connected.
- Consult the dealer or an experienced radio/TV technician for help.

The device has been evaluated to meet general RF exposure requirement. The device can be used in portable exposure condition without restriction