

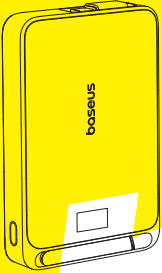
baseus 倍思包装设计稿件信息		
产品名称: DZ-AO 倍思 Nomos Qi2 自带USB-C线磁吸支架移动电源 10000mAh 45W 星际黑		
产品型号: PPNMS-1030SC	料号: /	
方案编码: /	编码&版本: PB5794Z-P0A0	
平面设计师: 王青云	结构设计师: 张安清	
物料描述: 说明书(128g铜版纸覆哑膜\双面印刷\2C\风琴折\60*95mm\6页12P\ROHS)		
版本历史		
版本	变更日期	变更描述
P0A0	2024-08-06	初始发行

**温馨提示:** 请印刷供应商严格按照倍思的图纸印刷生产。如贵司有生产上的原因需要调整倍思图纸的字体、图形、颜色、刀模尺寸等, 请务必通知倍思相关负责的包装设计, 并在征得包装设计同意的情况下修改文档并返回存档。

切线	折线	
刀线图例	K	Y

**baseus**

# QUICK START GUIDE



**User Manual**  
OS-Baseus Nomos Qi2 Kickstand Magnetic Power Bank with Built-in USB-C Cable 10000mAh 45W

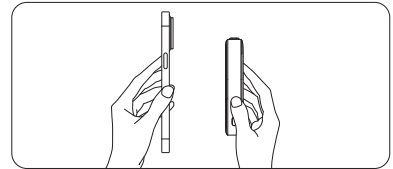
For FAQs, detailed user manuals, and more information, please visit <https://www.baseus.com/pages/support-center>

## 1. WARRANTY

- EN** Customer Service  
1. 24-Month Warranty  
2. Lifetime Tech Support
- ES** Servicio al Cliente  
1. Garantía de 24 meses  
2. Soporte Técnico de por Vida

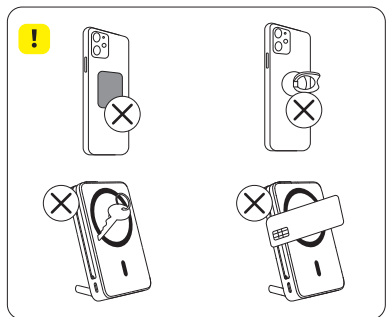
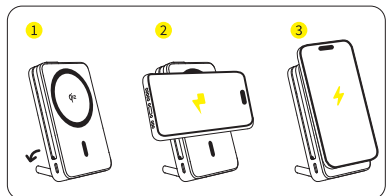
Contact Us  
care@baseus.com  
<https://www.baseus.com>  
+1 800 220 8056 (US)

## 2. CHARGING THE IPHONE 12 SERIES OR LATER



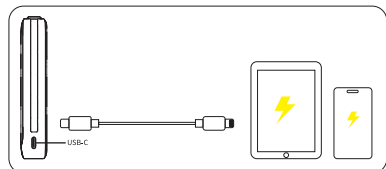
- EN** Wireless charging for Apple 12 series and newer models.
- ES** Adecuado para la carga inalámbrica de la serie 12 de Apple y modelos actualizados.

## 3. MODE OF USES



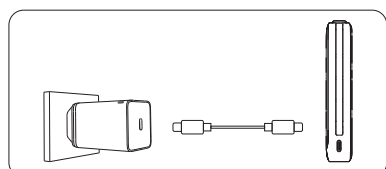
- 02 -

## 4. CHARGING YOUR DEVICES



- EN** You can charge your device via the built-in cable/USB-C port.
- ES** Puede cargar su dispositivo mediante el cable integrado/puerto USB-C.

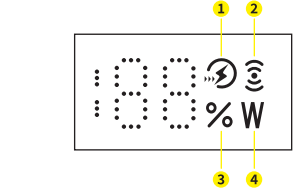
## 5. RECHARGING



- EN** You can recharge your power bank via the built-in cable/USB-C port.
- ES** Puede cargar su batería externa mediante el cable integrado/puerto USB-C.

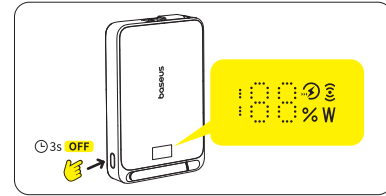
- 03 -

## 6. SMART DIGITAL DISPLAY



- EN** 1. Fast-charging LED indicator  
2. Wireless charging LED indicator  
3. Battery percentage symbol  
4. Symbol of Power (Watt)
- ES** 1. Piloto led de carga rápida  
2. Piloto led de carga inalámbrica  
3. Símbolo de porcentaje del nivel de carga de la batería  
4. Símbolo de potencia (vatios)

## 7. TURN ON/OFF THE SCREEN



- 04 -

Facebook @baseus\_fans Instagram @baseus\_global X (Twitter) @baseus\_Global YouTube @baseusofficial TikTok @baseus\_us

CE, Recycled, PAP, Recicla carta

Warning: Please follow the above safety instructions otherwise it will cause fire, electric shock, damage or other injuries.

Gancio	Manuale
PP 5	PAP 22
Raccolta plastica	Raccolta carta

Adesivo di chiusura	Manuale
PET 1	PAP 22
Raccolta plastica	Raccolta carta

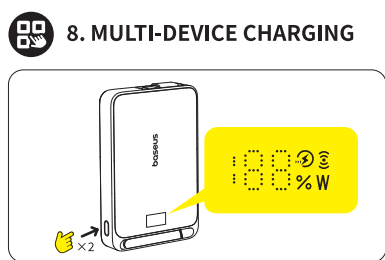
Film di protettivo per le lenti	Manuale
PET 1	PAP 22
Raccolta plastica	Raccolta carta

Manufacturer: Shenzhen Baseus Technology Co., Ltd.  
Addr: 2<sup>nd</sup> Floor, Building B, Baseus Intelligence Park, No.2008, Xuegang Rd, Gangtuo Community, Bantian Street, Longgang District, Shenzhen  
Hotline: +1 800 220 8056 Website: <https://www.baseus.com>  
Official After-sales E-mail Address: care@baseus.com  
Designed by Baseus Made in China

PB5794Z-P0A0 XXXXXXXXXX

## 8. MULTI-DEVICE CHARGING

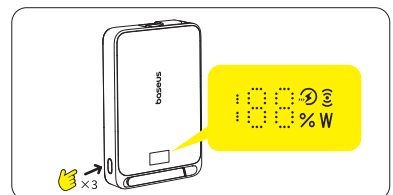
- EN** Press the power button to display the battery level and long press it for 3 seconds to turn off. When the screen is on, press it again to display the power.
- ES** Pulse el botón de encendido para visualizar el nivel de carga de la batería y manténgalo pulsado durante 3 segundos para apagar. Con la pantalla encendida, vuelva a pulsarlo para visualizar la carga.



- EN** When using wired charging, the power bank turns off wireless charging by default to maximize charging speed. To use both wireless and wired charging, double press the power button to enable wireless charging.
- ES** Al utilizar la carga con cable, la batería externa desactiva por defecto la carga inalámbrica, con el fin de maximizar la velocidad de carga. Para utilizar la carga inalámbrica y la carga con cable, pulse dos veces el botón de alimentación para activar la carga inalámbrica.

- 05 -

## 9. LOW CURRENT CHARGING MODE



- EN** Press the power button three times to initiate low current charging mode.
- ES** Pulse el botón de alimentación tres veces para iniciar el modo de carga de baja corriente.

## 10. SPECIFICATIONS

Model No. ES: N.º de modelo	PPNMS-1030SC
Capacity ES: Capacidad	5000mAh 7.2V/36Wh
Cell ES: Celda	5000 mAh x 2
USB-C/USB-C Cable Input ES: Entrada mediante cable USB-C/USB-C	5V-3A; 9V-3A; 12V-2.5A; 15V-2.0A

- 06 -

USB-C/USB-C Cable Output ES: Salida mediante cable USB-C/USB-C	5V-3A; 9V-3A; 12V-2.5A; 15V-2.67A; 10V-2.25A(SCP); PPS 5-11V-5A(45W Max.)
Wireless Output ES: Salida inalámbrica	5W/7.5W/15W
USB-C+USB-C Cable Output ES: Salida mediante cable USB-C/USB-C	5V-3A
Total Output ES: Salida total	5V-3A
Product Size ES: Tamaño del producto	108.0 x 67.9 x 19.6 mm
Product Weight ES: Peso del producto	≈230 g

## 11. CONTENT

- ES: Contenido
- Power Bank x1
  - Quick Start Guide x1
  - Emoji Stickers x1

- 07 -

- EN** Important Safety Instructions  
When using this product, basic precautions should always be followed:  
1) Store this product in a cool and dry place.  
2) Do not store this product in a hot or humid environment.  
3) Using a power supply or charger not recommended or sold by the product manufacturer may result in a risk of fire or personal injury.  
4) Do not disassemble this product. Take it to a qualified service person when service or repair is required. Incorrect reassembly may result in a risk of fire or personal injury.  
5) If the product is not used for a long time, charge and discharge it once every three months. Be aware that a depleted battery may cause fire or smoke.  
6) When charging a device, this product may feel warm. This is a normal operating condition and should not be a cause for concern.  
7) Under normal circumstances, battery capacity will gradually decrease with time.  
8) Do not clean this product with harmful chemicals or detergents.  
9) Misuse, dropping or excessive force may damage the product. Be aware that a broken or damaged battery may cause fire or smoke.  
10) When disposing of secondary cells or batteries, keep those of different electrochemical systems separate.  
11) CAUTION: There is a risk of explosion if the battery is replaced by an incorrect type.  
12) WARNING: The batteries (battery pack or installed batteries) shall not be exposed to excessive heat, such as from the sun or fire.  
13) A battery subjected to extremely low air pressure may result in an explosion or leakage of flammable liquid or gas.

**Declaration of Conformity**  
Shenzhen Baseus Technology Co., Ltd. declares that the product is in compliance with Directive 2014/53/EU. The full text of the EU declaration of conformity is available at the following internet address: <https://eu.baseus.com/pages/eu-ro-compliance>

CE This product complies with the radio interference requirements of the European Community.

This symbol indicates that this product shall not be treated as household waste. Instead it shall be handed over to the applicable collection point for the recycling of electrical and electronic equipment. Follow local rules and never dispose of the product and/or batteries with normal household waste.

**FCC Statement**  
This device complies with Part 15 of the FCC Rules. Operation is subject to the following two conditions: (1) This device may not cause harmful interference, and (2) this device must accept any interference received, including interference that may cause undesired operation.

- 08 -

**Warning:** Changes or modifications not expressly approved by the party responsible for compliance could void the user's authority to operate the equipment.

**Note:** This equipment has been tested and found to comply with the limits for a Class B digital device, pursuant to Part 15 of the FCC Rules. These limits are designed to provide reasonable protection against harmful interference in a residential installation.

This equipment generates, uses, and can radiate radio frequency energy and, if not installed and used in accordance with the instructions, may cause harmful interference to radio communications. However, there is no guarantee that interference will not occur in a particular installation.

If this equipment does cause harmful interference to radio or television reception, which can be determined by turning the equipment off and on, the user is encouraged to try to correct the interference by one or more of the following measures:  
(1) Reorient or relocate the receiving antenna.  
(2) Increase the separation between the equipment and receiver.  
(3) Connect the equipment to an outlet on a circuit different from the connected receiver.  
(4) Consult a dealer or an experienced radio / TV technician for help.

**Radiation Exposure Statement**  
The product has been evaluated to meet general RF exposure requirement. The product can be used in portable exposure condition without restriction.

The following importer is the responsible party (for FCC matters only).  
Company Name: BASEUS TECHNOLOGY (US) INC  
Address: #215 BROOKHURST ST SUITE 1312  
ANHEIM, CA 92804  
Telephone: +6-145412699

**Frequency Range: 115KHz-205KHz,360KHz**  
**Radiated H-Filed:**  
115-205KHz: -9.99dBµA/m@10m  
360KHz: -21.21dBµA/m@10m

**Declaración de conformidad**  
Shenzhen Baseus Technology Co., Ltd. declara que el producto cumple con la Directiva 2014/53/UE. El texto completo de la declaración de conformidad de la UE está disponible en el siguiente sitio web: <https://eu.baseus.com/pages/euro-compliance>

Este producto cumple con los requisitos de interferencias de radio de la Comunidad Europea.

Este símbolo indica que este producto no se debe tratar como un residuo doméstico. Debe entregarse en el punto de recogida correspondiente para el reciclaje de equipos eléctricos y electrónicos. Siga las normativas locales y nunca deseché el producto o las baterías con la basura doméstica normal.

- 09 -

**ES** Instrucciones de seguridad importantes  
1) Guardar este producto en un lugar fresco y seco.  
2) No guardar este producto en un entorno cálido o húmedo.  
3) Utilizar una fuente de alimentación o un cargador que no sea el recomendado o vendido por el fabricante del producto puede generar un riesgo de incendio o lesiones personales.  
4) No desmonte este producto. Lévelo a un técnico del servicio cualificado cuando requiera mantenimiento o reparación. Un reensamblaje incorrecto puede generar un riesgo de incendio o lesiones personales.  
5) Si el producto no se usa durante un periodo prolongado, cárguelo y descárguelo una vez cada tres meses. Tenga en cuenta que una batería agotada puede generar un incendio o humo.  
6) Al cargar un dispositivo, este producto puede generar calor. Se trata de una condición de funcionamiento normal y no debería preocuparle.  
7) En circunstancias normales, la capacidad de la batería disminuirá gradualmente con el paso del tiempo.  
8) No limpie este producto con productos químicos o detergentes dañinos.  
9) El mal uso, las caídas o la fuerza excesiva pueden dañar el producto. Tenga en cuenta que una batería rota o dañada puede generar un incendio o humo.  
10) Al desechar las baterías o celdas secundarias, mantenga separadas las de distintos sistemas electroquímicos.  
11) PRECAUCIÓN: Existe riesgo de explosión si la batería se sustituye por una de un tipo incorrecto.  
12) ADVERTENCIA: Las baterías (paquete de baterías o baterías instaladas) no se deben exponer a calor excesivo, como el del sol o el fuego.  
13) Una batería que se someta a una presión de aire extremadamente baja puede generar una explosión o una fuga de líquido o gas inflamable.

- 10 -