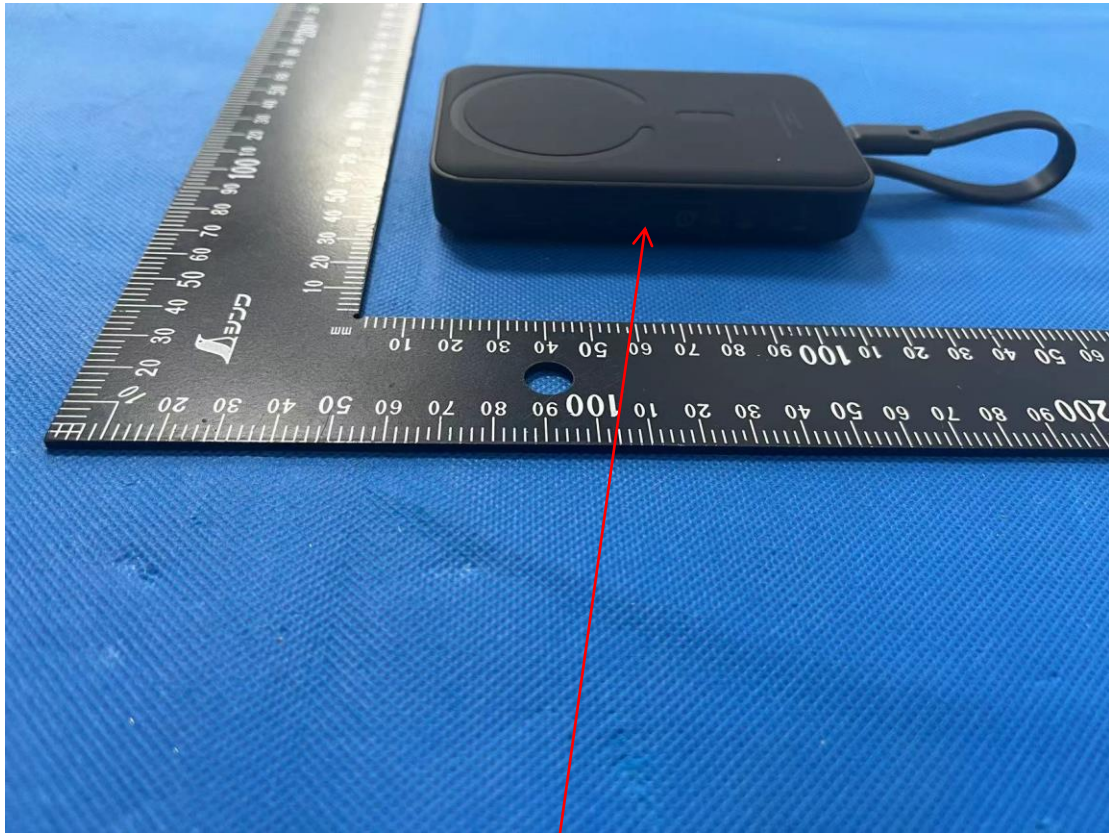


Location:



Label







Power Bank Model No.: PPCXM10T FCC ID: 2A482-PPCXM10TB Battery: Polymer Lithium Battery Energy Conversion Rate:  $\geq 75\%$  Capacity: 5000mAh 7.4V/37Wh Cell: 5000mAh\*2pcs Type-C Input: 5V=3A; 9V=2A; 12V=1.5A Type-C Cable Input: 5V=3A; 9V=2A; 12V=1.5A Type-C Output: 5V=3A; 9V=3A; 12V=2.5A; 15V=2A Type-C Cable Output: 5V=3A; 9V=3A; 12V=2.5A; 15V=2A Wireless Output: 5W/7.5W/10W/15W Type-C Output+Type-C Cable Output: 5V=3A Total Output: 5V=3A Transmission Frequency: 115-205kHz SN: DBK230801

Type-C Input/Output:

Type-C Input: 5V=3A; 9V=2A; 12V=1.5A  
Type-C Output: 5V=3A; 9V=3A; 12V=2.5A; 15V=2A

Type-C Output: 5V=3A;  
9V=3A; 12V=2.5A; 15V=2A

非1: 1, 核对参数用



信思科技日本株式会社