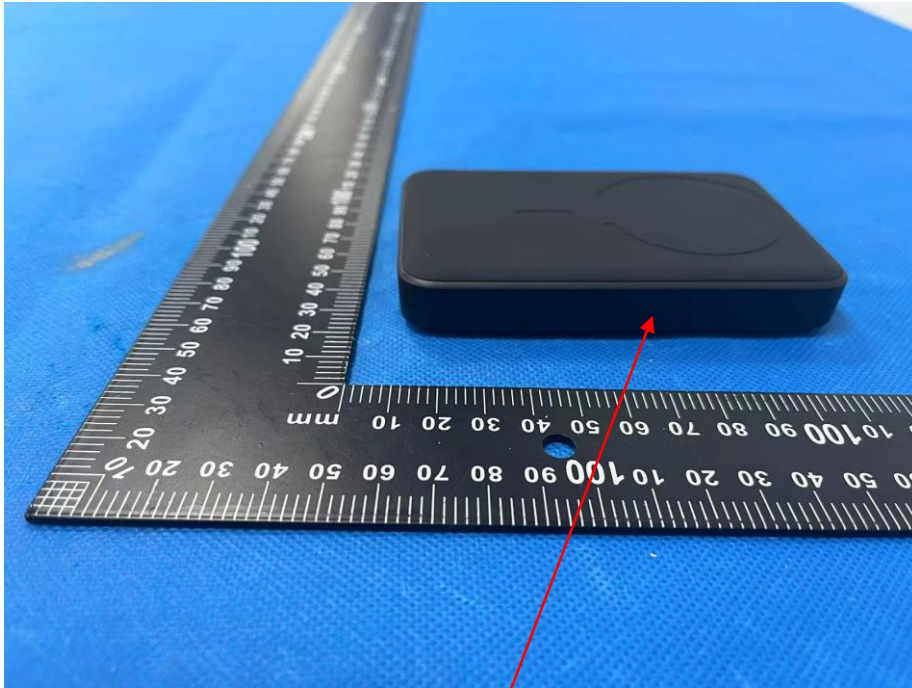


## Label & label location



Power Bank Model No.: PPCXM10A Battery: Polymer Lithium Battery  
Energy Conversion Rate:  $\geq 75\%$  Capacity: 10000mAh/37Wh  
Type-C Input :5V=3A;9V=2A Type-C Output: 5V=2.4A;9V=2.22A;12V=1.5A  
Wireless Output: 5W/7.5W/10W/15W Total Output: 5V=2.4A  
Transmission Frequency: 115-205kHz FCC ID: 2A482-PPCXM10C



株式会社成洋