



深圳市鹿兴科技有限公司  
Shenzhen Luxing Technology Co., Ltd

---

## Antenna Sample Datasheet

entry name:	E19
Material category:	BT antenna
Antenna Material	FPC
edition:	A4
Date:	2023. 12. 29
Address:	12th Floor, West Block B, Building 8, Huaqiang Creative Industry Park, Guangming District, Shenzhen



## Contents

1: Antenna test equipment.....	1
2: Passive test report.....	3
3: Matching circuit.....	5
4: Structural drawing.....	6
5: Antenna diagram.....	8

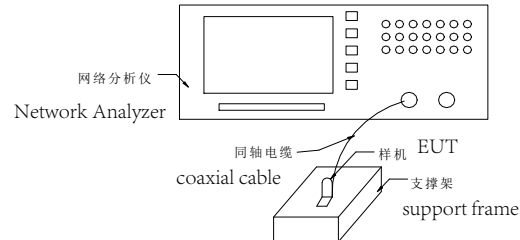


## 1: Antenna test equipment

List of meters: Agilent 5071B;



### 1.1 The principle diagram of the ETS anechoic chamber



Picture1. Antenna static test connection method



## 1.2 Pictures of the ETS anechoic chamber



Inside the ETS anechoic chamber



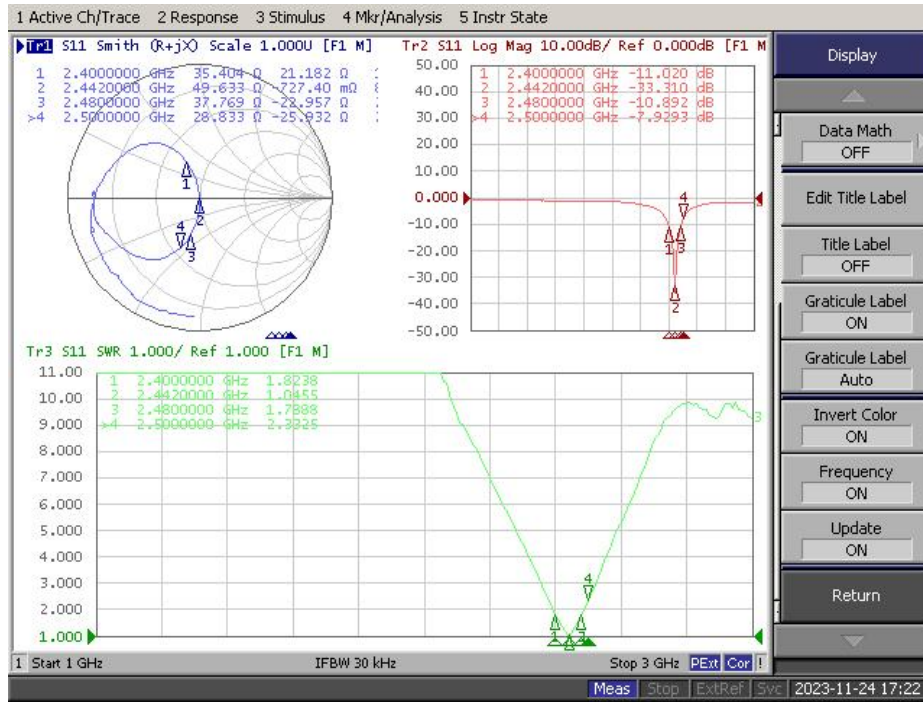
Test Machine



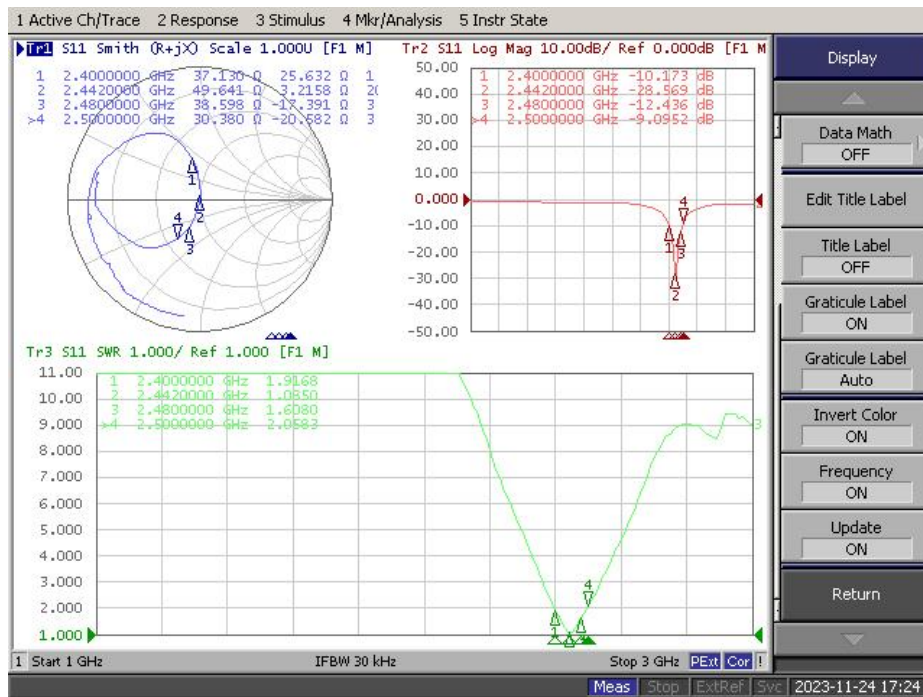
## 2: Passive test report

### 2.1: BT antenna S11 parameters

Left:



Right:

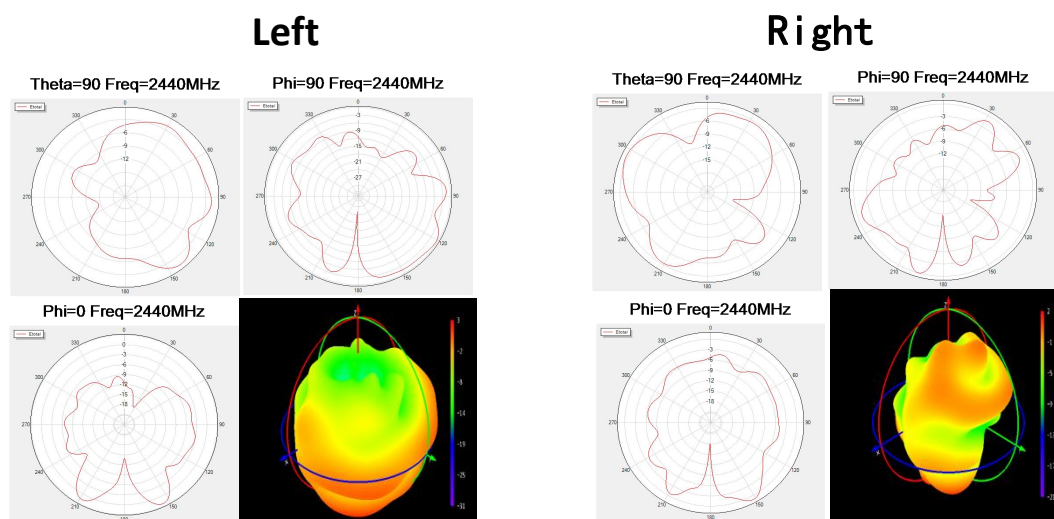




## 2.2: Passive efficiency of antenna

2400-2480MHz				
Freq(MHz)	Gain(dBi)	Efficiency(%)	Gain(dBi)	Efficiency(%)
	free space-Left	free space-Left	free space-Right	free space-Right
2400	1.84	34.63	-1.42	39.59
2410	1.84	34.87	-1.07	39.33
2420	1.88	34.61	-0.66	38.9
2430	1.99	34.16	-0.19	38.12
2440	2.14	33.55	0.26	37.19
2450	2.25	33.04	0.56	36.53
2460	2.14	32.32	0.57	35.74
2470	1.88	31.87	0.35	35.14
2480	1.62	31.68	0.07	34.83
Mean value	1.95	33.41	-0.17	37.26

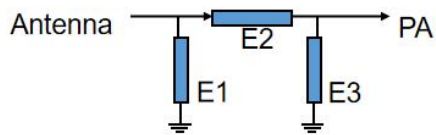
## 2.3: Passive pattern of BT antenna





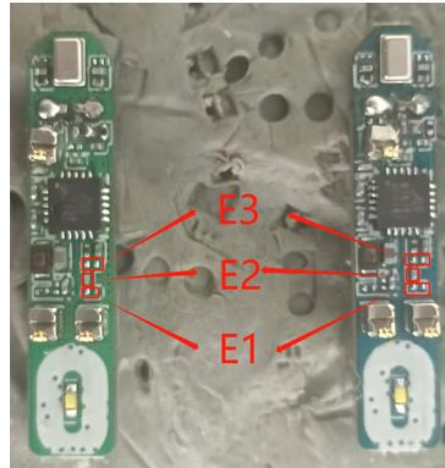
### 3: Matching circuit

Left/Right



L/R

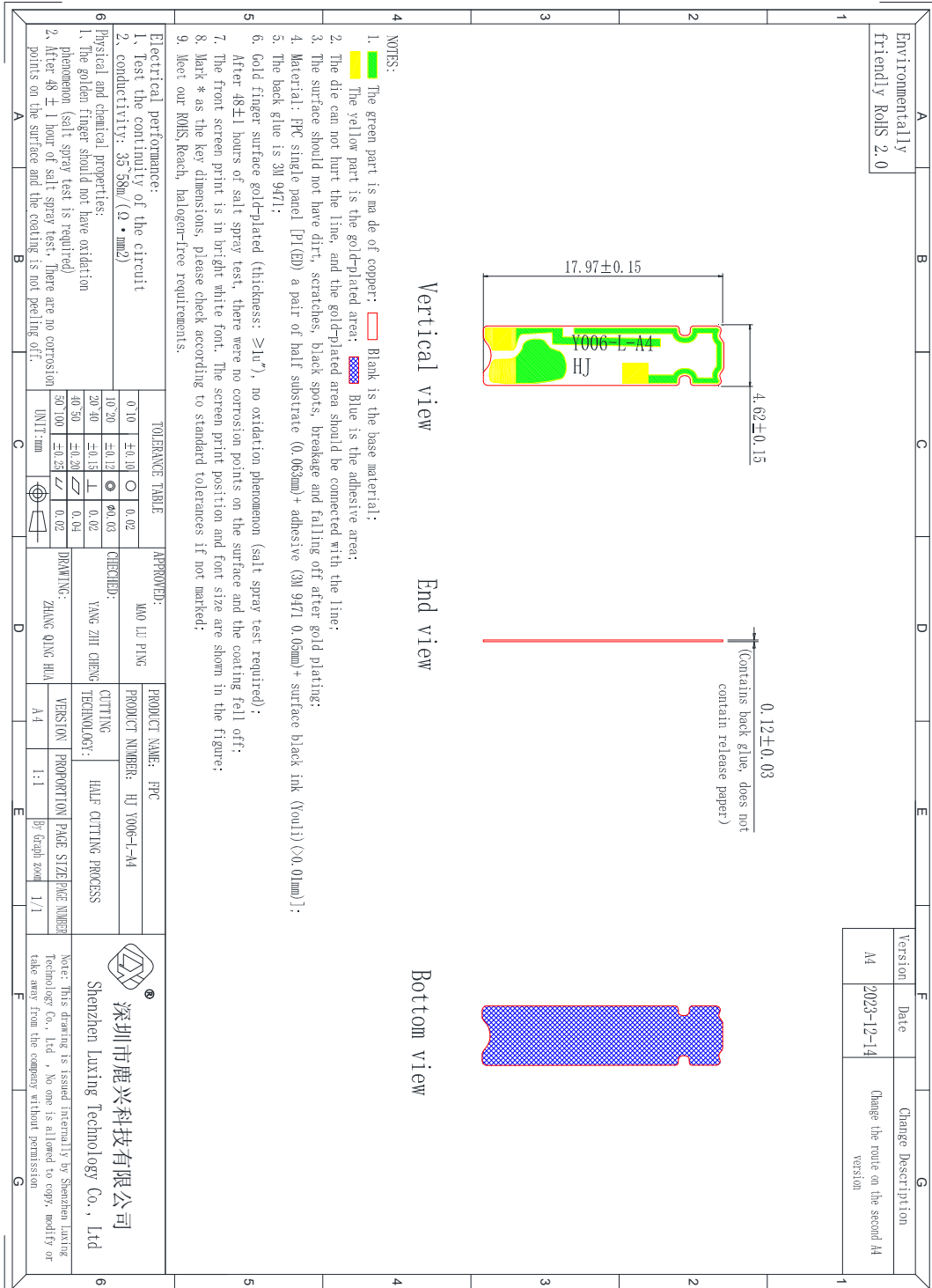
位号 bit number	参数 parameter
E1	N/C
E2	0Ω
E3	1PF





## 4: Structural drawing

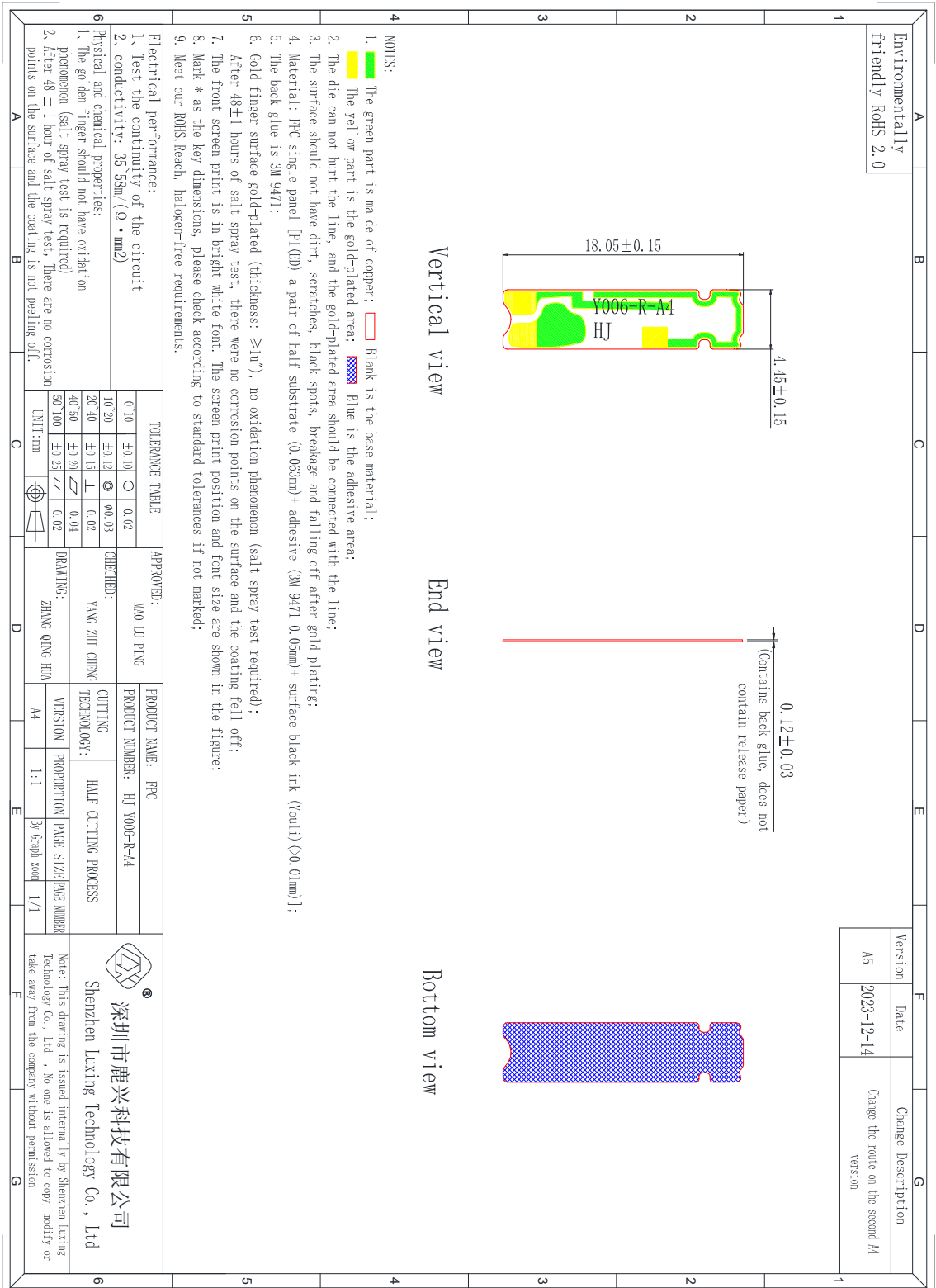
Left







Right





## 5: Antenna diagram

Left



Right

