

# Antenna Test Report

For

Project D05

Version:

<b>Customer</b>		<b>Project</b>	<b>D05</b>
<b>Band</b>	<b>BT</b>	<b>Color</b>	
<b>Issued by</b>	<b>Sk</b>	<b>Checked by</b>	
<b>Confirmed by</b>		<b>Date</b>	<b>2022.11.1</b>

This test report belongs to ShenZhen NQI network communication ltd. and related clients to file, please keeping it propely, without our company and related clients allowed, anybody has no rights to reval it to public.

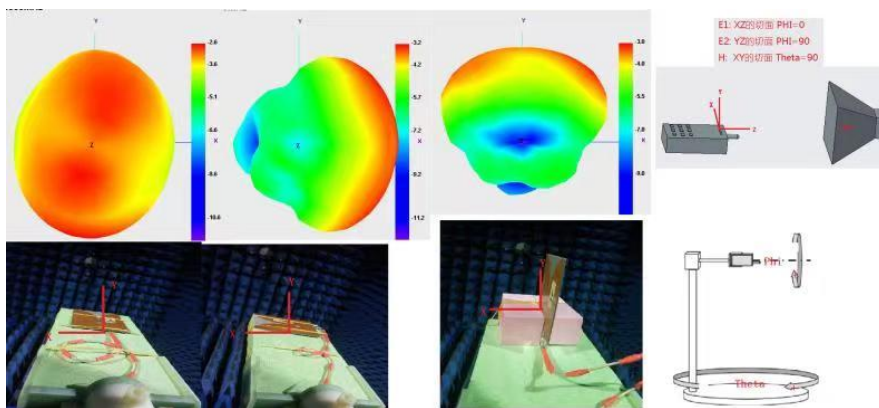


一. Test Instrumentation and item(测试设备及项目)

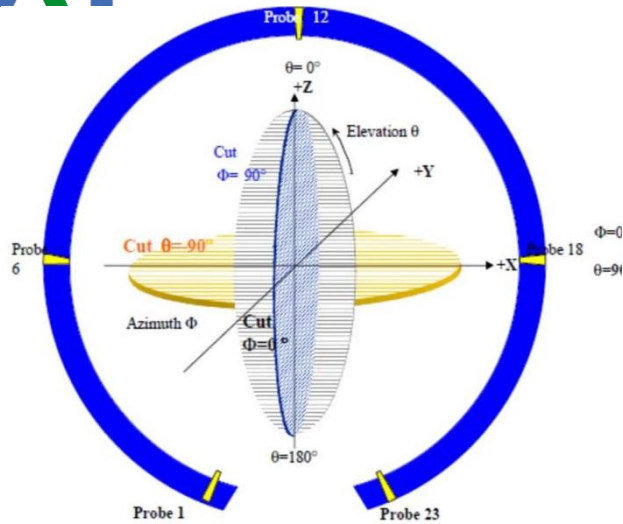
类别 (Class)	测试项目 (Test item)	设备 (Equipment)
1. S parameter	1. 回波损耗(RL) 2. 驻波比 (VSWR) 3.史密斯原图(Smith chart)	网分 (VNA) : Agilent E5071B  R&S ZVB8  Protek A333
2. 耦合测试 (Coupling testing)	1. 发射功率 (MAX Power) 2. 接收灵敏度 (MIN Sens)	1.2G/3G Tester: Agilent 8960 2.The coupling box: TESCOM TC-5060A 3. 3D Chamber: ETS 3D Chamber (5x3x3)
3. 3D 无源测试 (Passive Test)	1. 效率 (Effeciency) 2. 增益 (Gain) 3.辐射方向图 (radiation pattern)	1. 3D Chamber: TEM24 3D Chamber(5x5x5)  ETS 3D Chamber (5x3x3) 2. 网分 (VNA) : Agilent E5071B  R&S ZVB8
4.3D 有源测试 (Active Test)	1. 3D 功率 (TRP) 2. 3D 灵敏度 (TIS) 3.吞吐率 (Throughput rate)	1. 3D Chamber: TEM24 3D Chamber(5x5x5)  ETS 3D Chamber (5x3x3) 2.2G/3G Tester: Agilent 8960 3.4G Tester: MT8820C/CMW500 4.WIFI/BT/NB-iot Tester: CMW500 5. 5G Tester: SP9500-CTS 6.Head: HEAD-P10 (FACE-P10)



## 二. Chamber coordinate axis (暗室坐标)



This test report belongs to ShenZhen NQI network communication ltd. and related clients to file, please keeping it propely, without our company and related clients allowed, anybody has no rights to revel it to public.



### 三. Definitions (定义)

VSWR: Voltage Standing Wave Rate

RL: Return loss

TRP: total radiated power

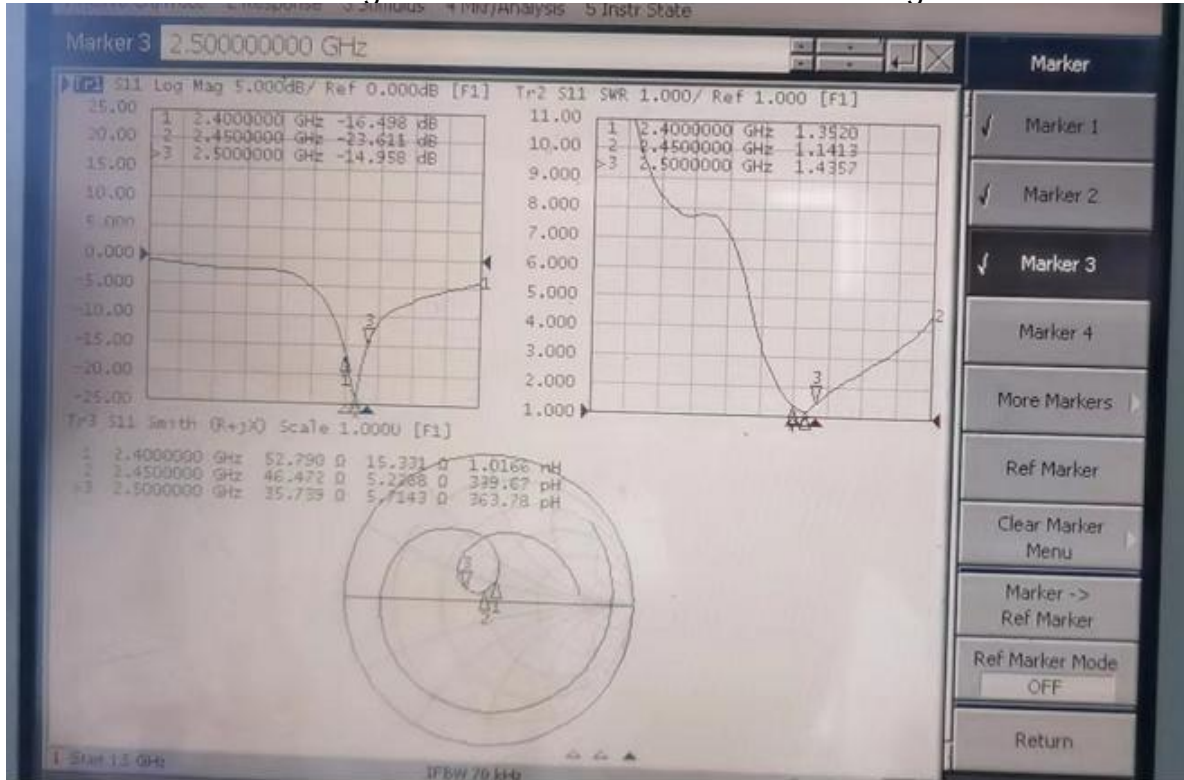
TIS: total isotropic sensitivity



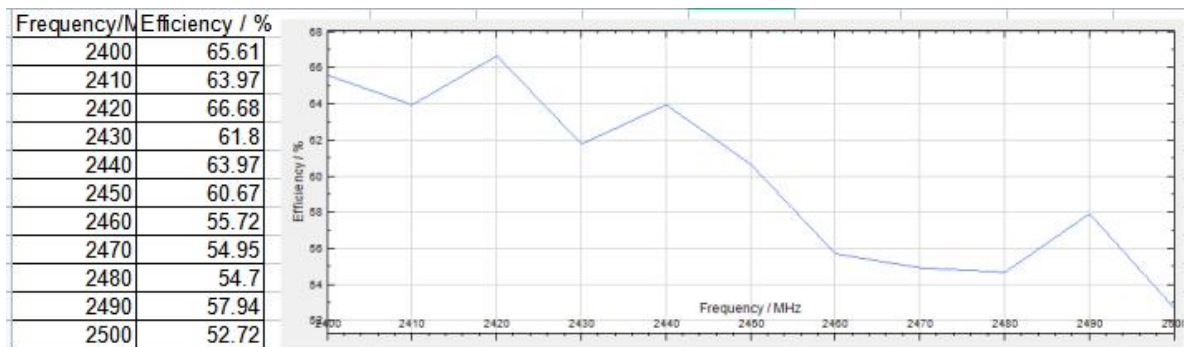
#### 四. 无源测试Passive antenna test

##### 4.1回波损耗/驻波比/史密斯圆图

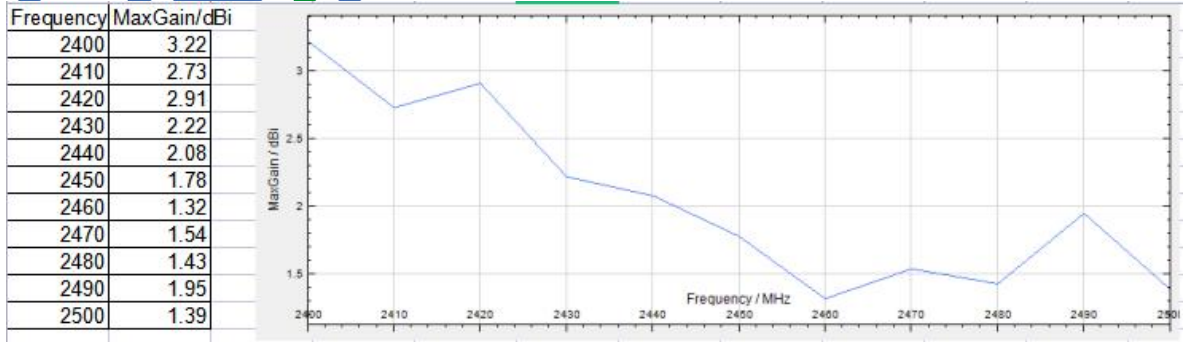
Return loss/standing wave ratio/Smith circle diagram



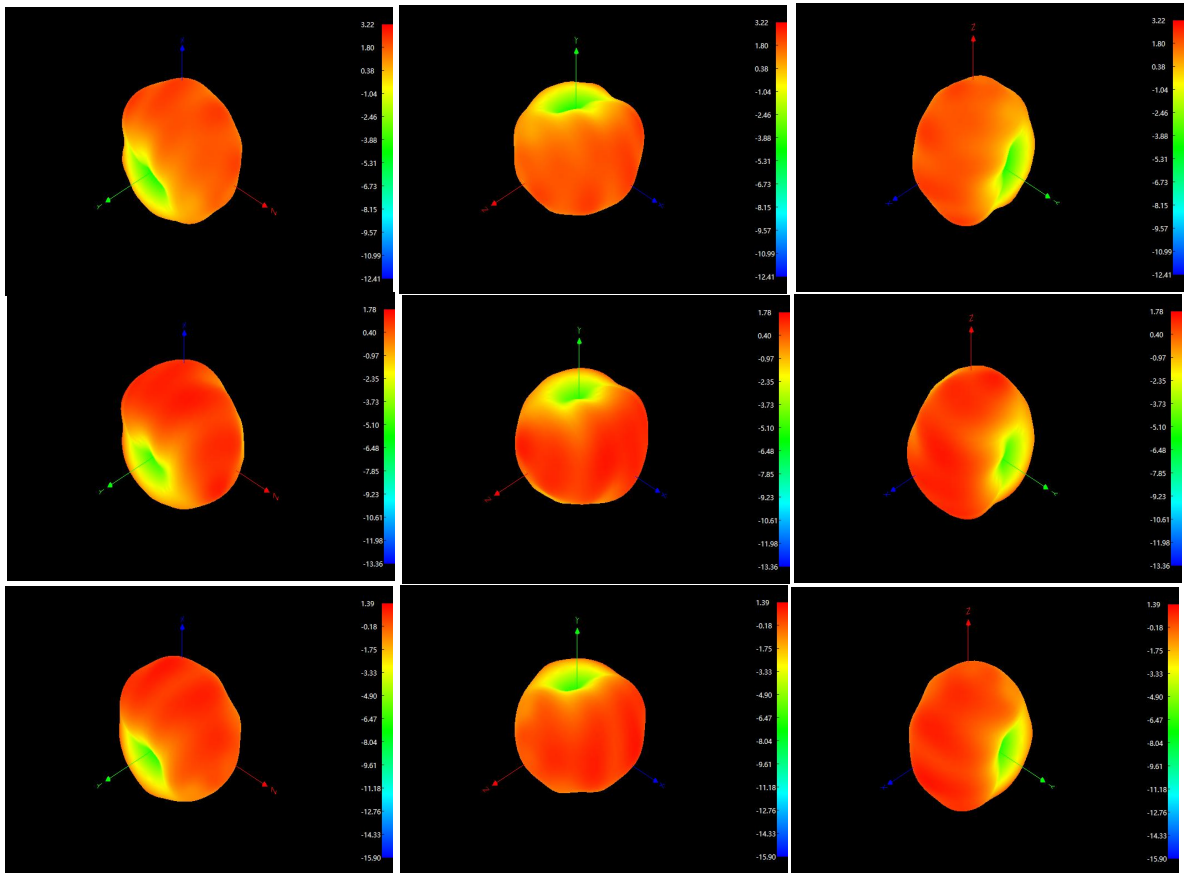
##### 4.2 效率&增益 Efficiency & Gain



This test report belongs to ShenZhen NQI network communication ltd. and related clients to file, please keeping it propely, without our company and related clients allowed, anybody has no rights to revel it to public.



### 4.3 3D 方向图 3D directional diagram



This test report belongs to ShenZhen NQI network communication ltd. and related clients to file, please keeping it propely, without our company and related clients allowed, anybody has no rights to revel it to public.

## Antenna Photo & Length (mm)

