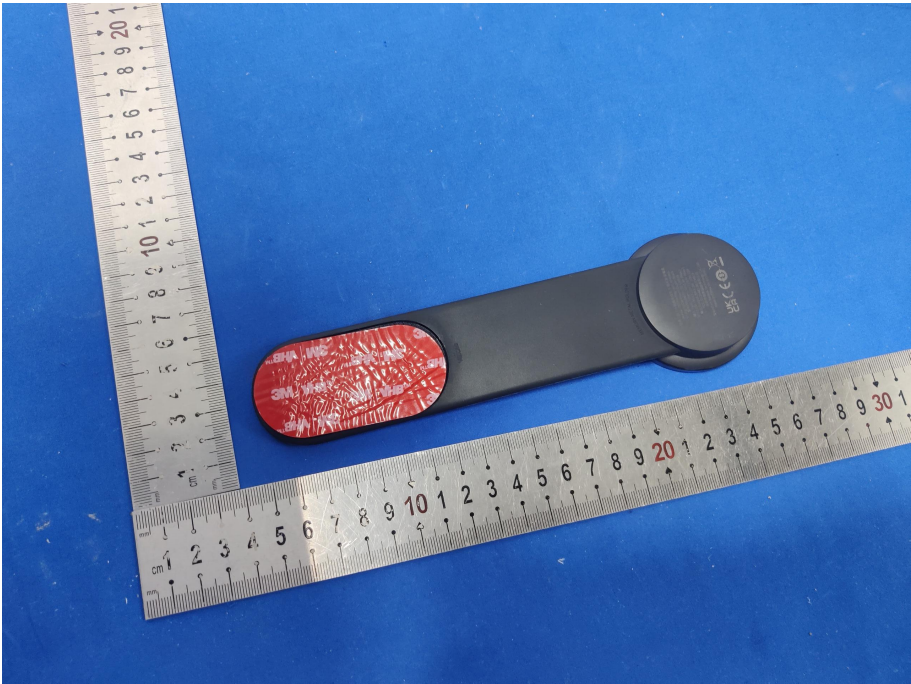
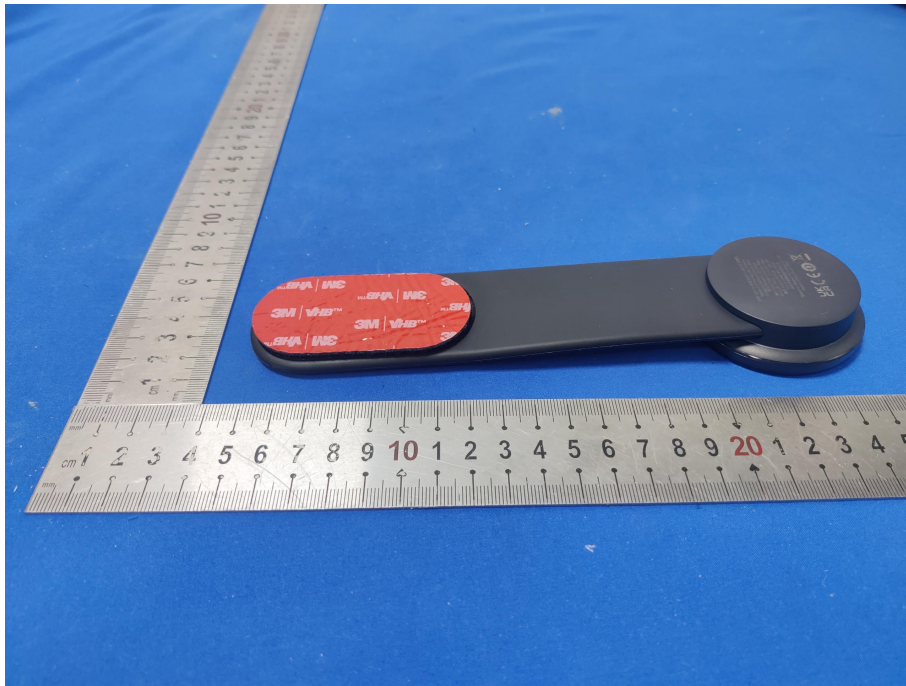
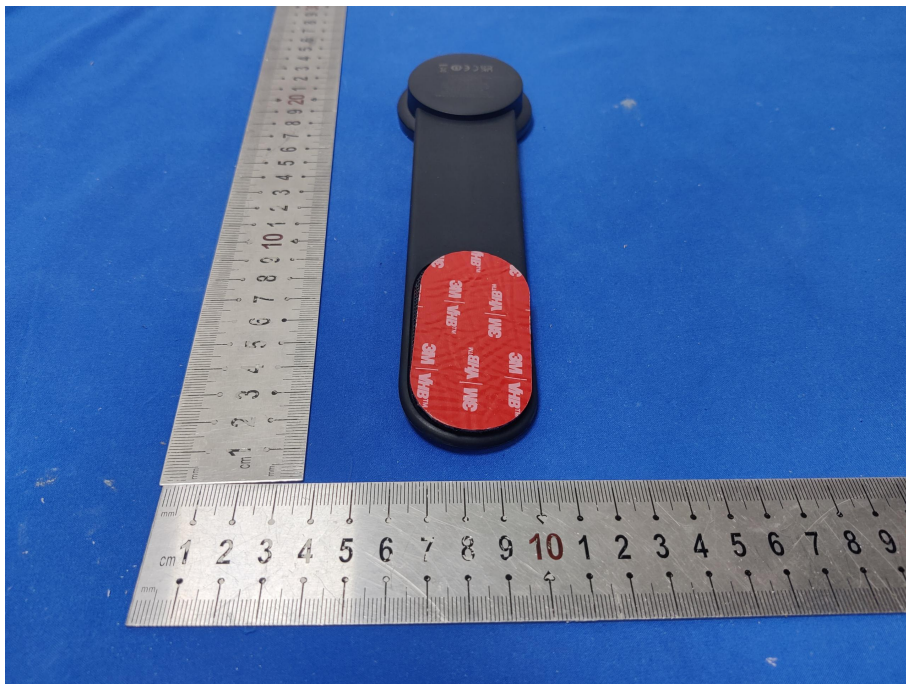
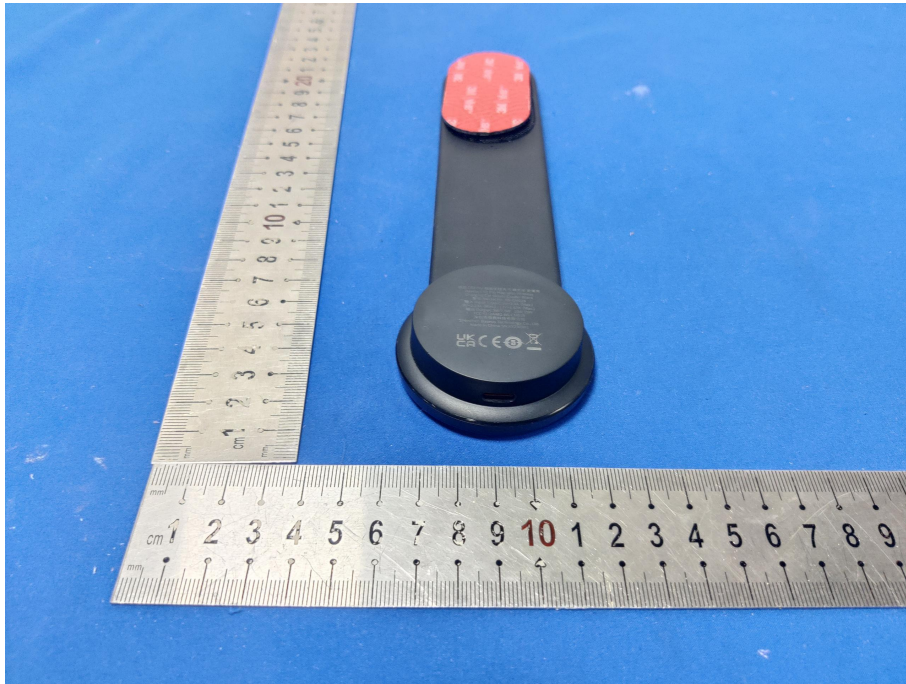


External Photos







MEMORY METAL HOLDER

倍思 C02 Pro 磁吸无线充电支架 黑色
Baseus C02 Pro Magnetic Wireless
Charging Car Mount Cluster Black
型号/Model No.: BS-CM019
输入 Input Type: C5V=2.4A (Max.)
9V=2.23A (Max.) ; 12V=1.67A (Max.)
输出 Output: 5W/7.5W 10W 15W
FCC ID: 2A482-BS-CM019
深圳市倍思科技有限公司
Shenzhen Baseus Technology Co., Ltd.
Made in China SN: KY230301

