



深圳市凯普深通讯科技有限公司

Shenzhen Kaipushen Communication Technology Co., Ltd

天线调试报告

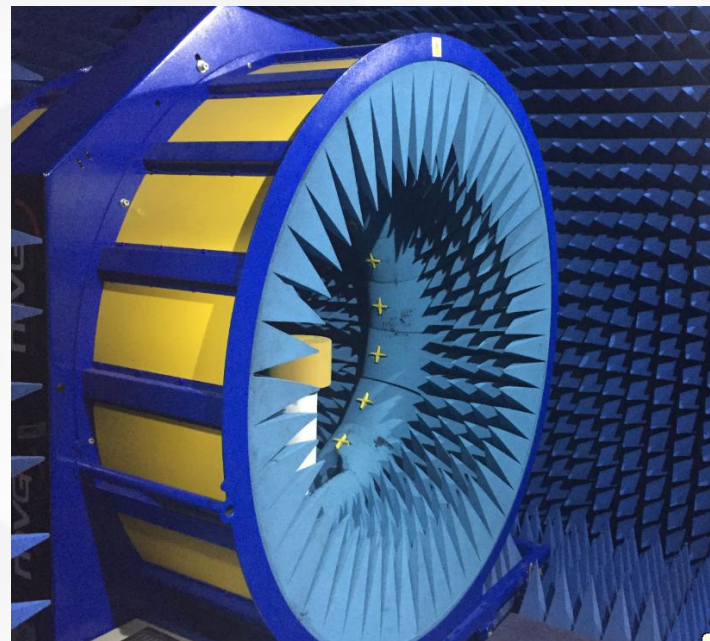
Antenna debugging report

客户 customer : 智多鲸科技
项目名 project name :
射频 RF : 庞工 Pang Gong
日期 Date : 2024.06.26
版本 version :



实验室测试环境及设备

Laboratory testing environment and equipment



测试项目 Test items	测试设备 Test equipment
S11、S12、VSWR、LOSS	网络分析仪network analyzer E5071B、E5062A
Efficiency、Gain 3D Radiation Pattern	Satimo SG16暗室darkroom、GP7*4*3暗室 darkroom、E5071B
TRP、TIS	Satimo SG16暗室darkroom、GP7*4*3暗室 darkroom、8960、CMW500、MT8820C、 E4438C、



凯普深

项目调试简介

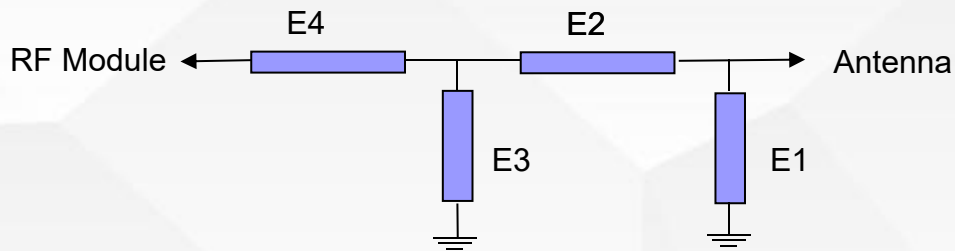
Introduction to Project Debugging

整机类型 Machine type			
		频段信息 Frequency band information	天线形式 Antennaform
天线种类及频段信息 Antenna type and frequency band information			
	WIFI/BT	2400-2480MHZ 2400-2500MHZ 5100-5800MHZ	PCB
天线材质 Antenna material			



凯普深

WIFI天线匹配电路

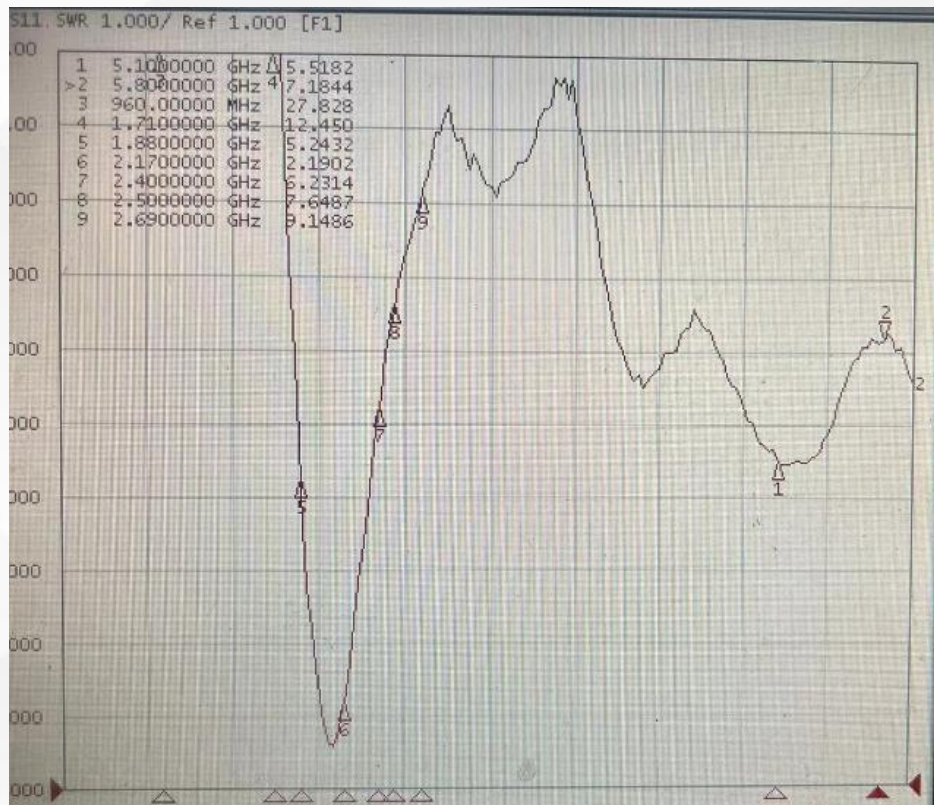


	Element	Value	
	E1(0201)		主板原有匹配
	E2(0201)		
	E3(0201)		



凯普深

WiFi 无源图 WiFi passive map





凯普深

WIFI效率测试数据

WIFI efficiency test data

WIFI5G

Frequency ID	1	2	3	4	5	6	7	8	9	10	11
Frequency (MHz)	5150.0	5160.0	5170.0	5180.0	5190.0	5200.0	5210.0	5220.0	5230.0	5240.0	5250.0
Efficiency (dBi)	-4.17	-4.09	-4.17	-4.14	-4.31	-4.34	-4.30	-4.28	-4.22	-4.35	-4.36
Gain (dBi)	1.71	1.76	1.64	1.63	1.46	1.49	1.67	2.05	2.25	2.21	2.27
Efficiency (%)	38.30	38.98	38.29	38.59	37.10	36.80	37.15	37.29	37.85	36.76	36.65

BT

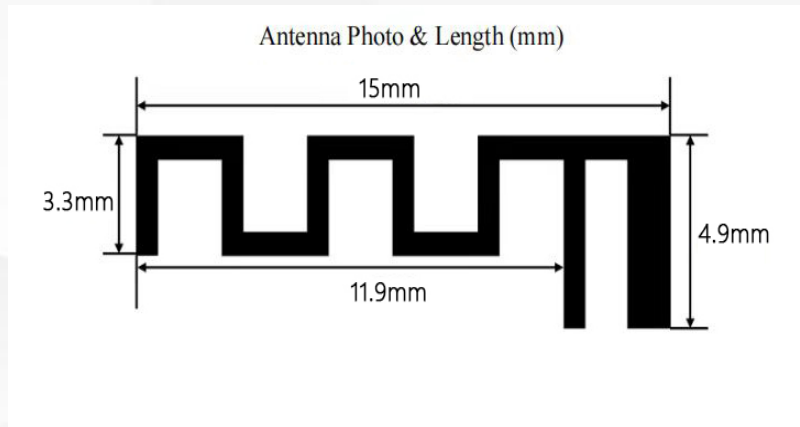
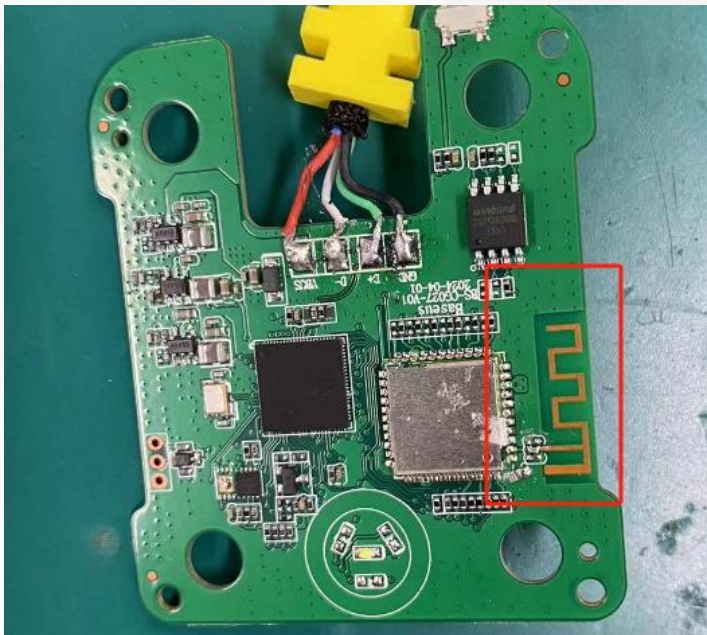
Frequency ID	1	2	3	4	5	6	7	8	9	10	11
Frequency (MHz)	2400.0	2410.0	2420.0	2430.0	2440.0	2450.0	2460.0	2470.0	2480.0	2490.0	2500.0
Efficiency (dBi)	-6.22	-6.34	-6.50	-6.34	-6.26	-6.10	-6.26	-6.32	-6.38	-6.57	-6.70
Gain (dBi)	-1.63	-1.84	-2.18	-2.27	-2.17	-2.02	-2.04	-1.97	-2.06	-2.37	-2.59
Efficiency (%)	23.88	23.21	22.39	23.25	23.67	24.53	23.67	23.31	23.01	22.01	21.36



凯普深

天线位置图

Antenna position diagram





联系方式

Contact information

射频 RF : 庞工 Pang Gong

电话 Tel : 13819148423

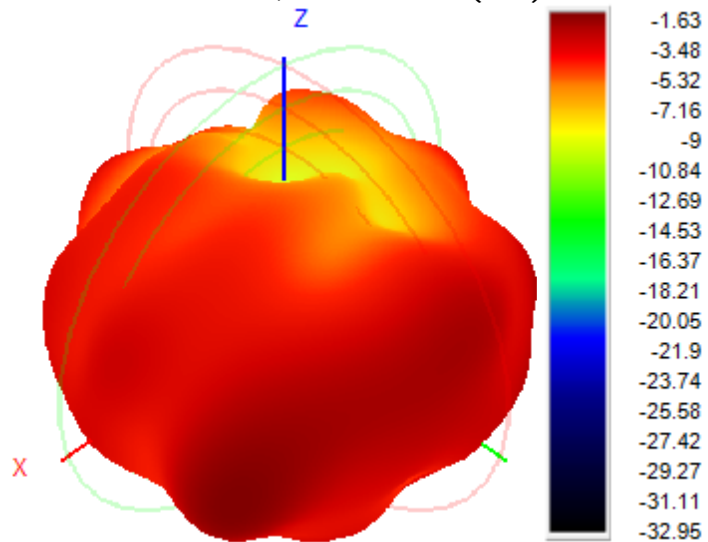
邮箱 E-mail: kpsyanfa3@szkpstx.com

地址: 龙华区龙观大道440号龙城工业区御龙办公楼二楼

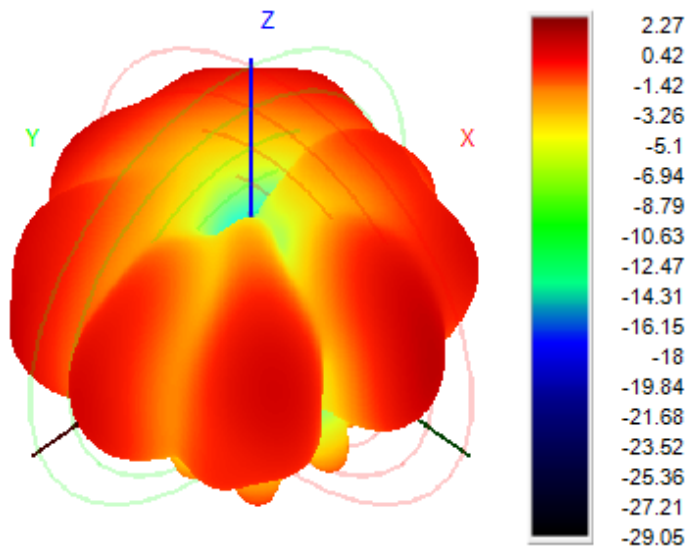
address : 2nd Floor, Building 1, Yulong Building, Longcheng Industrial

Zone, No.440, Longguan Avenue, Longhua District, Shenzhen

2400.0MHz H+V, Eff: 23.9%(dBi)



5250.0MHz H+V, Eff: 36.6%(dBi)





THE END

**感谢您的宝贵意见！
Thank you for your
valuable feedback !**