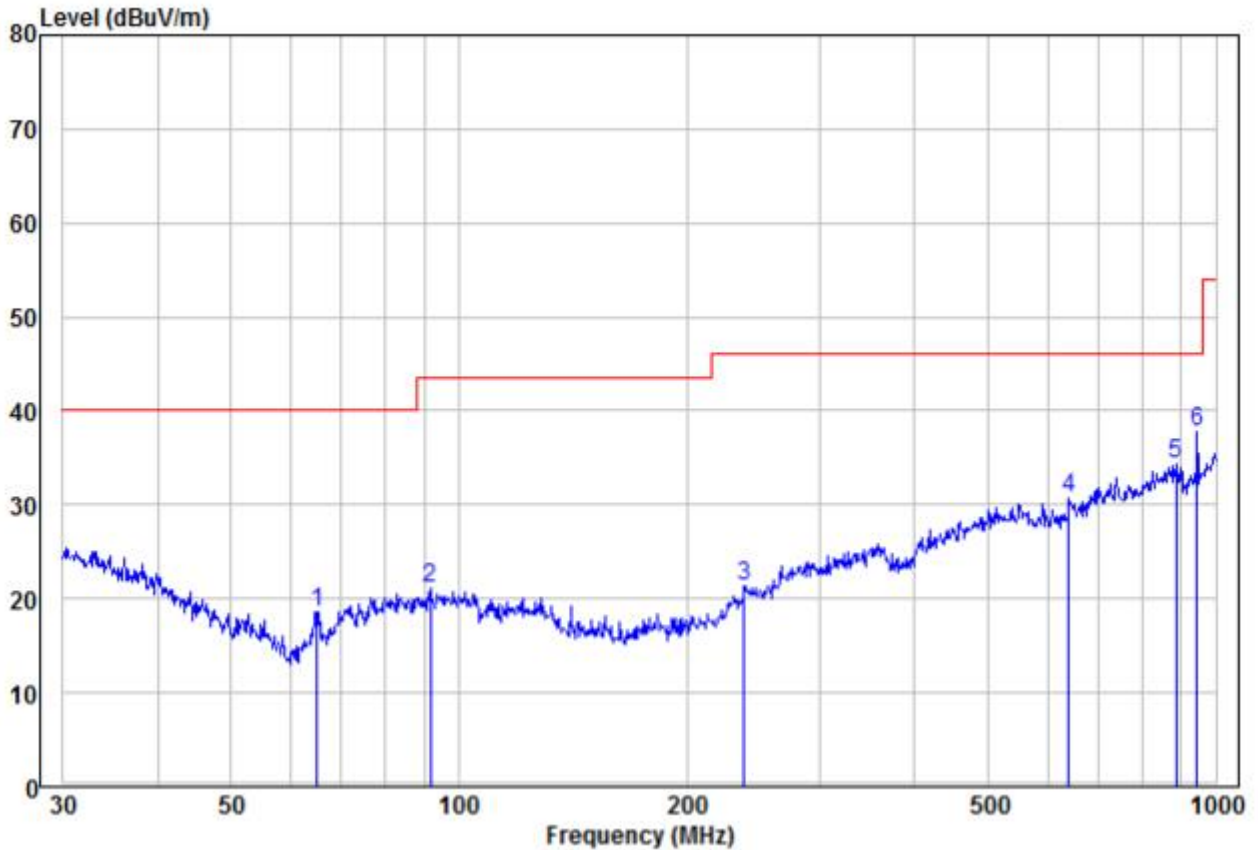


30MHz~1GHz, the worst case		
Test mode:	Transmitting mode	Vertical



	Read Freq	Read Level	Factor	Level	Limit Line	Over Limit	Remark	Pol/Phase
	MHz	dBuV	dB/m	dBuV/m	dBuV/m	dB		
1	64.89	12.12	6.55	18.67	40.00	-21.33	Peak	VERTICAL
2	91.82	10.93	10.13	21.06	43.50	-22.44	Peak	VERTICAL
3	238.31	9.96	11.37	21.33	46.00	-24.67	Peak	VERTICAL
4	640.61	11.15	19.51	30.66	46.00	-15.34	Peak	VERTICAL
5	887.61	10.44	23.89	34.33	46.00	-11.67	Peak	VERTICAL
6 pp	945.44	14.14	23.62	37.76	46.00	-8.24	Peak	VERTICAL

Transmitter Emission above 1GHz

Worse case mode:		GFSK(1Mbps)		Test channel:		Lowest	
Frequency	Meter Reading	Factor	Emission Level	Limits	Over	Detector Type	Ant. Pol.
(MHz)	(dB $\mu$ V)	(dB)	(dB $\mu$ V/m)	(dB $\mu$ V/m)	(dB)		H/V
<b>2390</b>	53.38	-9.2	44.18	74	-29.82	<b>Peak</b>	<b>H</b>
2400	56.76	-9.39	47.37	74	-26.63	Peak	H
4804	52.83	-4.33	48.50	74	-25.50	Peak	H
7206	50.74	1.01	51.75	74	-22.25	Peak	H
<b>2390</b>	52.46	-9.2	43.26	74	-30.74	<b>Peak</b>	<b>V</b>
2400	51.34	-9.39	41.95	74	-32.05	Peak	V
4804	54.83	-4.33	50.50	74	-23.50	Peak	V
7206	49.05	1.01	50.06	74	-23.94	Peak	V

Worse case mode:		GFSK(1Mbps)		Test channel:		Middle	
Frequency	Meter Reading	Factor	Emission Level	Limits	Over	Detector Type	Ant. Pol.
(MHz)	(dB $\mu$ V)	(dB)	(dB $\mu$ V/m)	(dB $\mu$ V/m)	(dB)		H/V
4880	51.39	-4.11	47.28	74	-26.72	peak	H
7320	48.99	1.51	50.50	74	-23.50	peak	H
4880	54.20	-4.11	50.09	74	-23.91	peak	V
7320	49.30	1.51	50.81	74	-23.19	peak	V

Worse case mode:		GFSK(1Mbps)		Test channel:		Highest	
Frequency	Meter Reading	Factor	Emission Level	Limits	Over	Detector Type	Ant. Pol.
(MHz)	(dB $\mu$ V)	(dB)	(dB $\mu$ V/m)	(dB $\mu$ V/m)	(dB)		H/V
<b>2483.5</b>	54.84	-9.29	45.55	74	-28.45	<b>Peak</b>	<b>H</b>
4960	51.26	-4.04	47.22	74	-26.78	Peak	H
7440	48.29	1.57	49.86	74	-24.14	Peak	H
<b>2483.5</b>	57.25	-9.29	47.96	74	-26.04	<b>Peak</b>	<b>V</b>
4960	50.44	-4.04	46.40	74	-27.60	Peak	V
7440	48.51	1.57	50.08	74	-23.92	Peak	V

Worse case mode:		GFSK(2Mbps)		Test channel:		Lowest	
Frequency	Meter Reading	Factor	Emission Level	Limits	Over	Detector Type	Ant. Pol.
(MHz)	(dBμV)	(dB)	(dBμV/m)	(dBμV/m)	(dB)		H/V
<b>2390</b>	54.93	-9.2	45.73	74	-28.27	<b>Peak</b>	<b>H</b>
2400	55.17	-9.39	45.78	74	-28.22	Peak	H
4804	52.57	-4.33	48.24	74	-25.76	Peak	H
7206	50.63	1.01	51.64	74	-22.36	Peak	H
<b>2390</b>	54.60	-9.2	45.40	74	-28.60	<b>Peak</b>	<b>V</b>
2400	52.22	-9.39	42.83	74	-31.17	Peak	V
4804	54.07	-4.33	49.74	74	-24.26	Peak	V
7206	51.02	1.01	52.03	74	-21.97	Peak	V

Worse case mode:		GFSK(2Mbps)		Test channel:		Middle	
Frequency	Meter Reading	Factor	Emission Level	Limits	Over	Detector Type	Ant. Pol.
(MHz)	(dBμV)	(dB)	(dBμV/m)	(dBμV/m)	(dB)		H/V
4880	50.37	-4.11	46.26	74	-27.74	peak	H
7320	49.83	1.51	51.34	74	-22.66	peak	H
4880	51.42	-4.11	47.31	74	-26.69	peak	V
7320	49.40	1.51	50.91	74	-23.09	peak	V

Worse case mode:		GFSK(2Mbps)		Test channel:		Highest	
Frequency	Meter Reading	Factor	Emission Level	Limits	Over	Detector Type	Ant. Pol.
(MHz)	(dBμV)	(dB)	(dBμV/m)	(dBμV/m)	(dB)		H/V
<b>2483.5</b>	55.05	-9.29	45.76	74	-28.24	<b>Peak</b>	<b>H</b>
4960	50.91	-4.04	46.87	74	-27.13	Peak	H
7440	50.51	1.57	52.08	74	-21.92	Peak	H
<b>2483.5</b>	56.59	-9.29	47.30	74	-26.70	<b>Peak</b>	<b>V</b>
4960	51.79	-4.04	47.75	74	-26.25	Peak	V
7440	48.75	1.57	50.32	74	-23.68	Peak	V

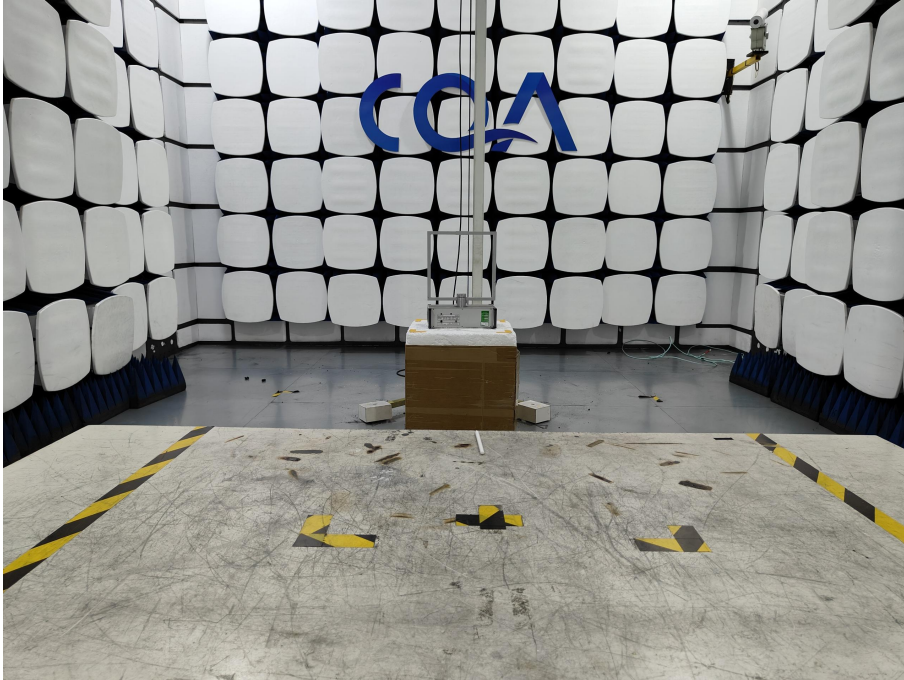
Remark:

- 1) The field strength is calculated by adding the Antenna Factor, Cable Factor & Preamplifier. The basic equation with a sample calculation is as follows:  
Final Test Level = Receiver Reading + Antenna Factor + Cable Factor – Preamplifier Factor
- 2) Scan from 9kHz to 25GHz, the disturbance above 10GHz and below 30MHz was very low. As shown in this section, for frequencies above 1GHz, the field strength limits are based on average limits. However, the peak field strength of any emission shall not exceed the maximum permitted average limits specified above by more than 20 dB under any condition of modulation. So, only the peak measurements were shown in the report.

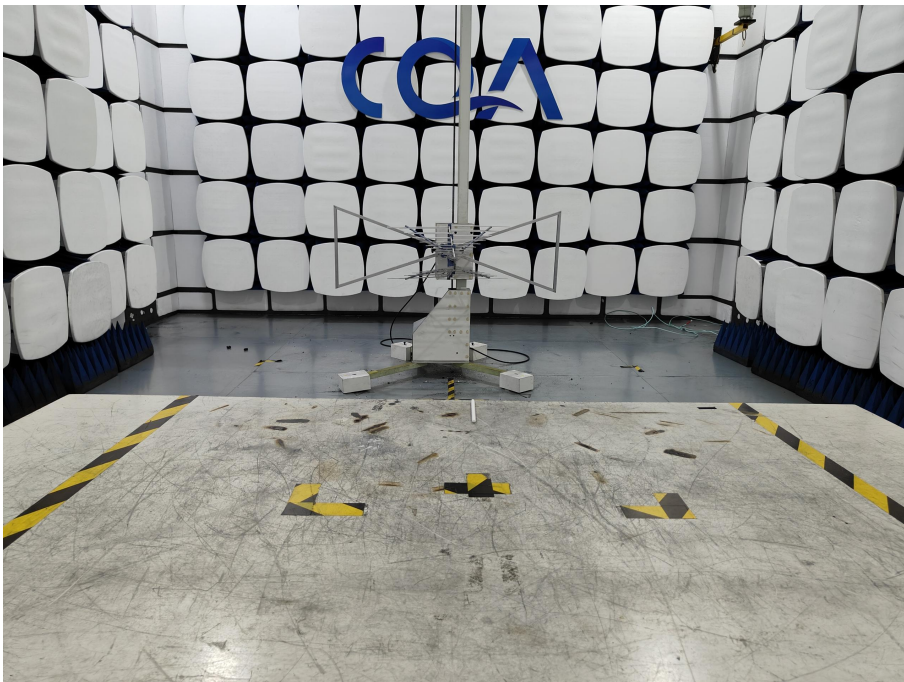
## 6 Photographs - EUT Test Setup

### 6.1 Radiated Spurious Emission

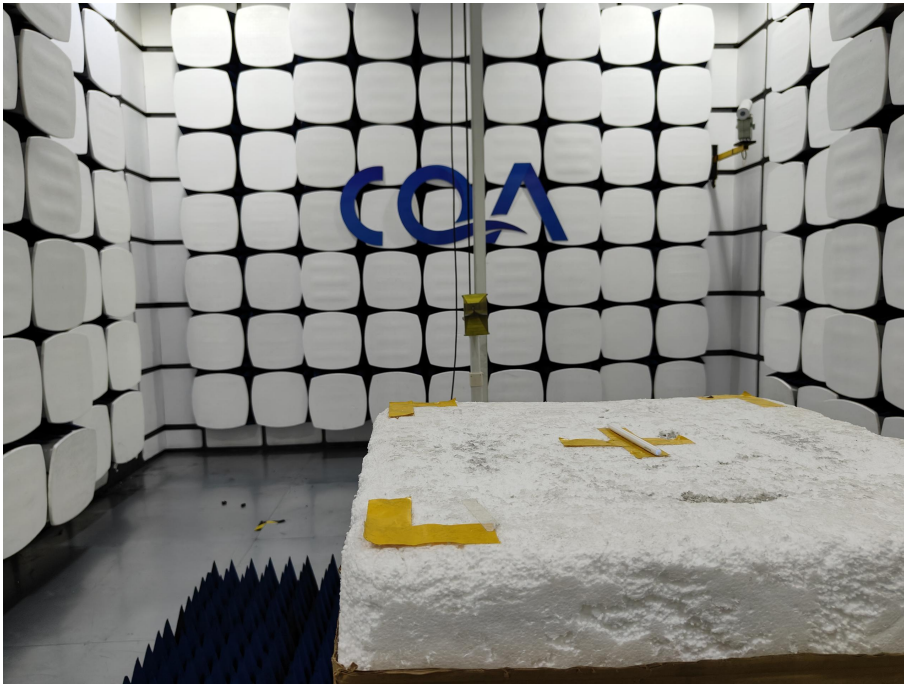
9kHz~30MHz:



30MHz~1GHz:



Above 1GHz:

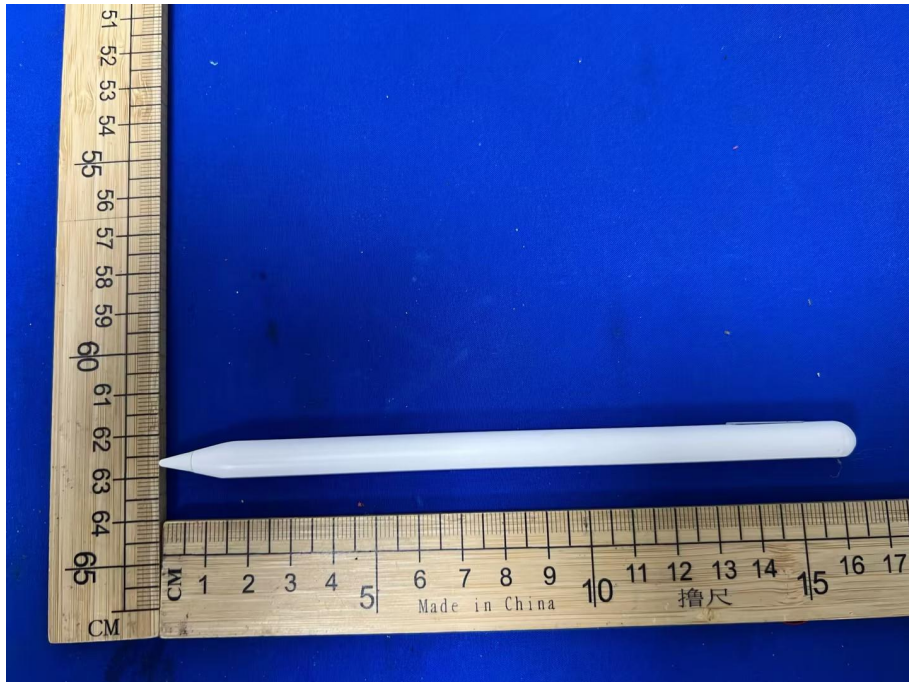
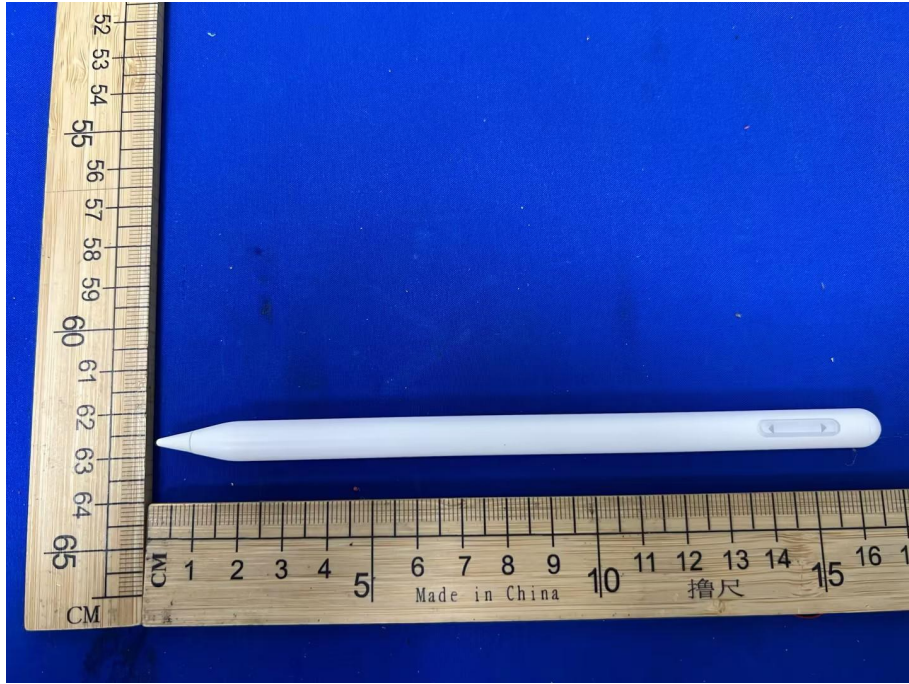


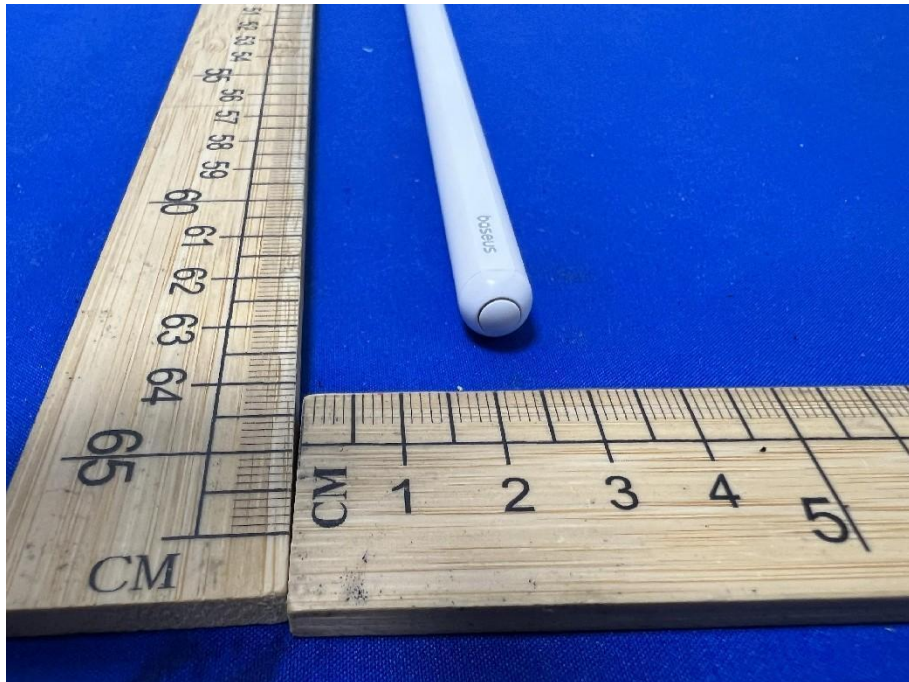
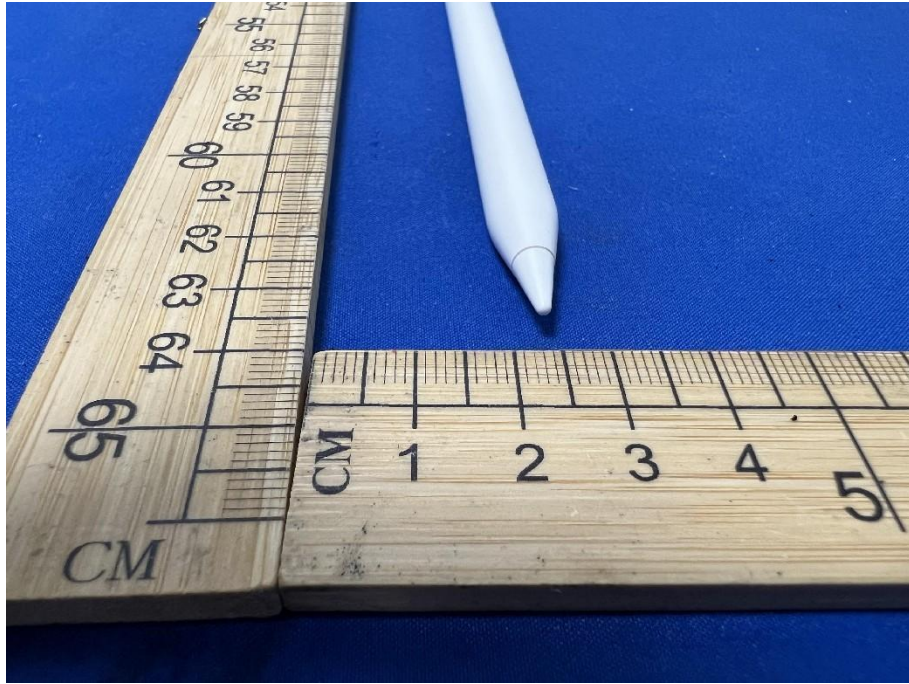
## 6.2 Conducted Emissions Test Setup



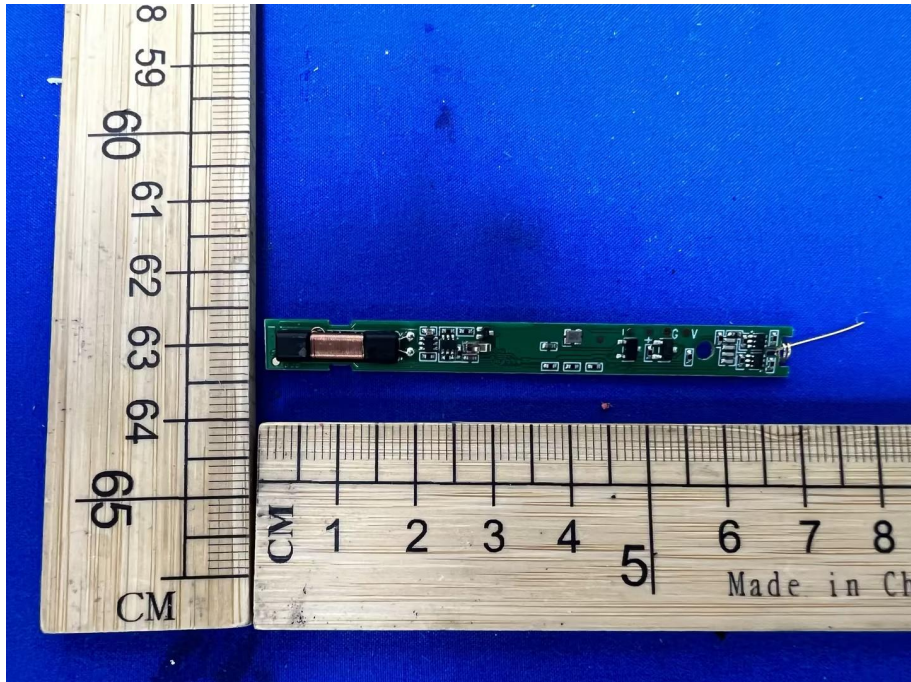
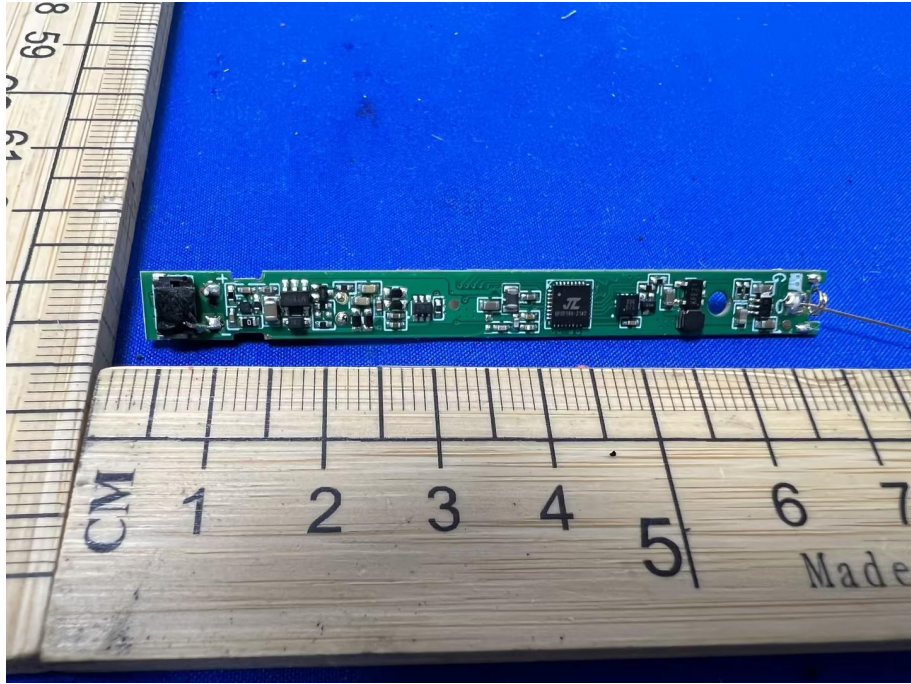
## 7 Photographs - EUT Constructional Details













\*\*\* END OF REPORT \*\*\*