



Antenna Specification

Revision History:

Revision History				
Rev.	Description	Version	Checked	Data
1.0	Initial release		MAX	2023/6/19



1、产品简单描述 (Product Brief Description)

PCB 天线是最低成本、中等尺寸，只要设计得当又能获得足够性能的天线;

Wiggle 天线占用空间更小，应用更灵活，广泛应用于无线键鼠产品当中.

(PCB antenna is the lowest cost, medium size antenna that can achieve sufficient performance as long as designed properly; Wiggle antennas take up less space and are more flexible in application, widely used in wireless keyboard and mouse products)

Applications:

※Bluetooth Home RF

※ISM band 2.4GHz applications

2、Dimensions

Unit:mm

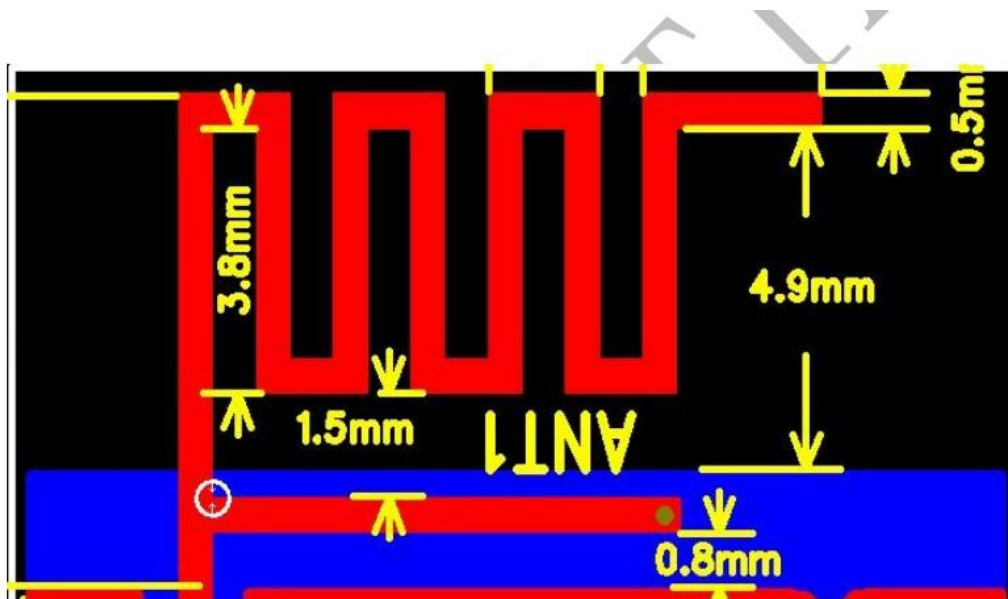


图 Normal Module Wiggle 天线



3. Performance specification

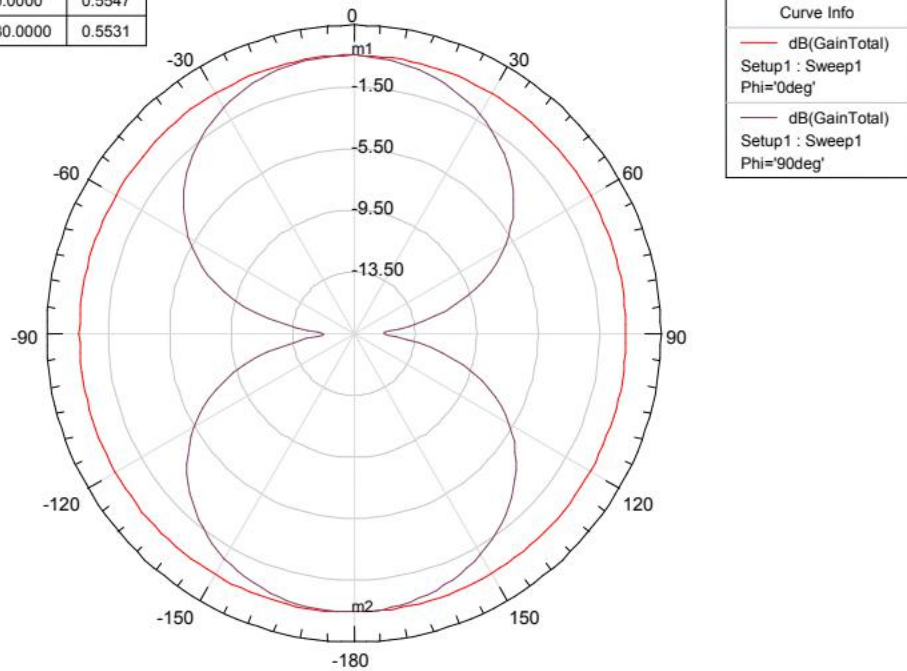
- 天线性能 S11 如下，工作频段覆盖整个 2.4G ISM 频段：
(Antenna performance S11 is as follows, and the working frequency band covers the whole 2.4G ISM radio band:)





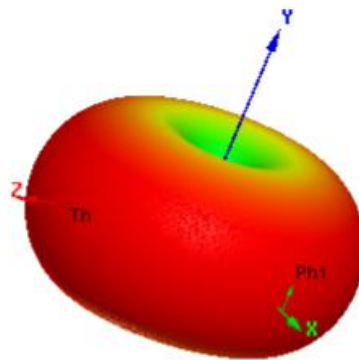
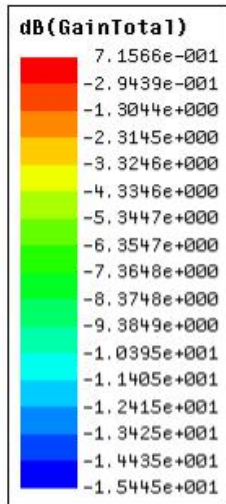
□ 2D 和 3D 增益如下(2D and 3D Gains are as follows)

Name	Theta	Ang	Mag
m1	0.0000	0.0000	0.5547
m2	180.0000	180.0000	0.5531



Radiation Patterns(GAIN @ 2440MHz)

Plane	XY			XZ			YZ		
Frequency(MHz)	2400	2440	2480	2400	2440	2480	2400	2440	2480
Peak Gain(dBi)	0.54	0.55	0.55	0.55	0.55	0.54	0.55	0.55	0.55





4. Contact information

深圳市芯领科技有限公司

Shenzhen core technology Co.,Ltd

深圳市宝安区新安六路华丰科技园 A 座 322 室

Room 322, Building A, Huafeng Science and Technology Park, Xin'an 6th Road, Bao'an District, Shenzhen

Tel: 0755-27202489

Tax: 0755-23345734