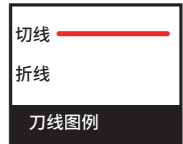
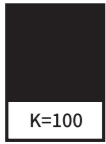


温馨提示：请印刷供应商严格按照倍息的图纸印刷生产。如贵司有生产上的原因需要调整倍息图纸的字体、图形、颜色、刀模尺寸等，请务必通知倍息相关负责的包装设计师，并在征得包装设计师同意的情况下修改文档并发回存档。



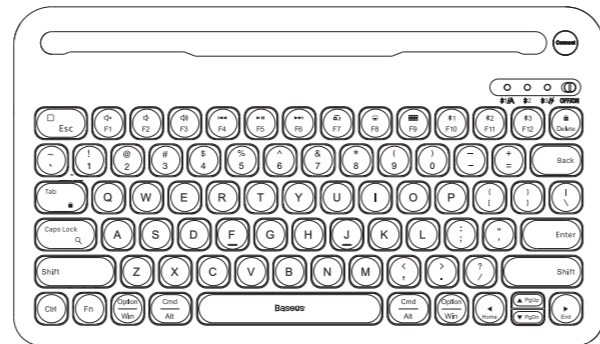
倍息包装设计稿件信息 Baseus

基本信息	产品型号	BS-K02		
	产品名称	CN-倍息 K02超薄无线键盘		
	产品方案编码			
	物料编码	1100002117	包装编码+版本号	PB4245Z-POA2
	物料规格描述	说明书\100g 悦声高白\风琴褶\90x120mm\4页8P		
包装平面设计	刘琪	包装结构设计	管京城	

版本历史

版本	变更日期	变更描述
POA0	2023.03.27	初始版本
POA1	2023.06.09	1. 文件上含有蓝牙字眼的都改成无线的字 2. 加上CE标识,加上FCC ID:2A482-BS-K02,加上意大利标,法国标, FCC警示语, DOC信息还有垃圾桶信息, 不带横杠的垃圾桶标识。
POA2	2023.06.12	加上带横杠的垃圾桶标识

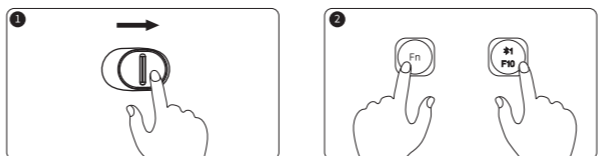
Baseus倍息



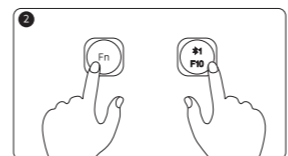
**K02超薄无线键盘
K02 Ultra-Thin Wireless Keyboard
使用说明书
User Manual**

使用前请仔细阅读本使用说明书,并妥善保管。
Before using the product, thoroughly read this manual. Keep the manual for future reference.

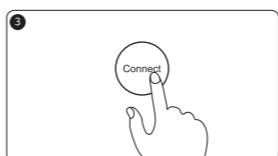
产品连接步骤



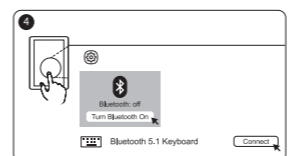
打开倍息电源开关



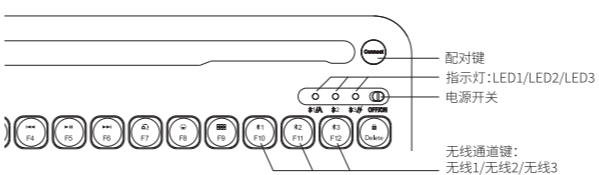
长按住 Fn 键,同时按一下无线通道键,蓝灯亮1秒后熄灭



按一下键盘配对键,蓝灯快闪,进入配对模式

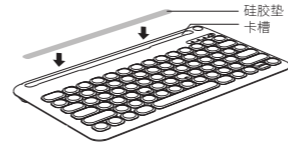


打开设备无线功能,进入搜索配对状态,选择键盘无线名称: Baseus K02 Keyboard



硅胶垫使用说明

先将硅胶垫放置并固定在卡槽底部,然后将平板、手机(不支持带壳使用)放置到卡槽内。



功能组合操作

按键图标	Mac OS 系统功能	Windows 系统功能	iPAD 系统功能	三星A6 系统功能	按键图标	Mac OS 系统功能	Windows 系统功能	iPAD 系统功能	三星A6 系统功能
[Esc]	单按为 Esc Fn+此键=返回功能	单按为 ESC Fn+此键=Web	单按为返回主界面 Fn+此键=ESC		[F1]	单按此键为F1 Fn+此键=静音			
[F2]	单按此键为F2 Fn+此键=音量+		单按此键为音量+ Fn+此键=F2		[F3]	单按此键为F3 Fn+此键=音量+		单按此键为音量+ Fn+此键=F3	
[F4]	单按此键为F4 Fn+此键=上一曲		单按此键为上一曲 Fn+此键=F4		[F5]	单按此键为F5 Fn+此键=播放/暂停		单按此键为播放/暂停 Fn+此键=F5	
[F6]	单按此键为F6 Fn+此键=下一曲		单按此键为下一曲 Fn+此键=F6		[F7]	单按此键为F7 Fn+此键=截屏		单按此键为截屏 Fn+此键=F7	
[F8]	单按此键为F8 Fn+此键=唤出符号窗口		单按此键为无功能 Fn+此键=F8		[F9]	单按此键为F9 Fn+此键=活动窗口切换		单按此键为活动窗口切换 Fn+此键=F9	
[F10]	单按此键为F10 长按Fn+此键为无线1通道切换 长按Fn+此键为无线1到Fn切换				[F11]	单按此键为F11 长按Fn+此键为无线2通道切换 长按Fn+此键为无线2到Fn切换			
[F12]	单按此键为F12 长按Fn+此键为无线3通道切换 长按Fn+此键为无线3到Fn切换				[DEL]	单按此键为DEL Fn+此键为Fn键			
[Tab]	单按此键为Tab Fn+此键为锁屏				[Caps Lock]	单按此键为Caps Fn+此键为搜索			
[Up Arrow]	单按此键为上方键 Fn+此键为PgUp		单按此键为上方键 Fn+此键为PgUp		[Down Arrow]	单按此键为下方键 Fn+此键为PgDn		单按此键为下方键 Fn+此键为PgDn	
[Left Arrow]	单按此键为左方向键 Fn+此键为Home		单按此键为左方向键 Fn+此键为Home		[Right Arrow]	单按此键为右方向键 Fn+此键为End		单按此键为右方向键 Fn+此键为End	
[Power]	电源键 向左为关机电源,向右为开机电源								

安全警示

- 产品内含电池,请勿将其暴露在强日照等过热环境中或强磁场中。
- 请勿让水溅,确保在干燥的环境下使用,请使用柔软的干布材料清洁键盘。
- 非专业人员严禁拆解本产品,否则可能会导致起火,甚至彻底损坏本产品。
- 长期不使用时,建议关闭电源开关,防止部分电流流失以延长电池的使用寿命。

电子信息产品有害物质声明

部件名称	有害物质或元素					
	铅 (Pb)	汞 (Hg)	镉 (Cd)	六价铬 (Cr VI)	多溴联苯 (PBB)	多溴二苯醚 (PBDE)
PCB	X	O	O	O	O	O
塑料	O	O	O	O	O	O
附件	O	O	O	O	O	O

本表格依据SJ/T 11364的规定编制。

O:表示该有害物质在该部件所有均质材料中的含量均在GB/T 26572标准规定的限量要求以下。

X:表示该有害物质在该部件某一均质材料中的含量超过GB/T 26572标准规定的限量要求。

温馨提示: 10年图标是指“环保有效使用期限”,不是产品质量保证期限。电子产品均含有铅、汞、镉等有害物质,一旦超期使用,有害物质将可能因为发生外泄或突变,对环境造成污染,或对人体及人财产造成严重损害。“环保使用期限”,意为所有的电子产品均将被要求在有效期限内使用,超过安全使用期限之后出现的安全风险问题,我们将不再对产品负责。

产品参数

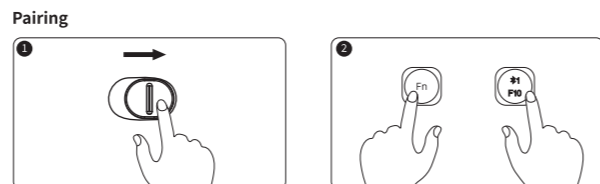
名称:倍息 K02超薄无线键盘	充电时长: < 3小时
型号:BS-K02	浅度休眠时间:3分钟无操作自动休眠
无线版本:无线5.1	深度休眠时间:10分钟无操作自动休眠
传输速率:110m	兼容系统:Windows, Apple OS, iOS, Android, Harmony OS
电池容量:1000mAh	产品尺寸:294×169×19.5mm
待机电流:0.7mA	

*以上数据来源于Baseus(倍息)实验室测定值,但因客观环境改变数据会有所不同或误差

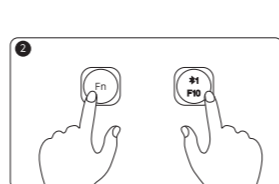
包装清单

无线键盘×1, 硅胶垫×1, 充电线×1, 使用说明书×1

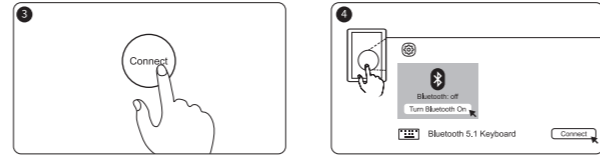
Pairing



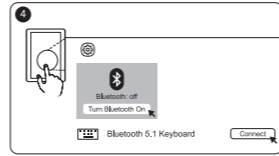
Power on the product



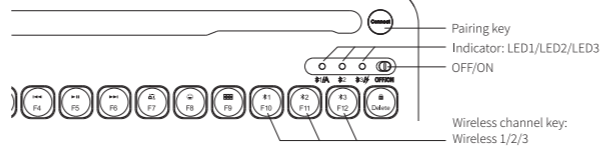
Press and hold Fn key, meanwhile, press the Wireless channel key, the blue indicator will light up for 1s before turning off



Press pairing key; the blue indicator will flash, and then enter pairing mode

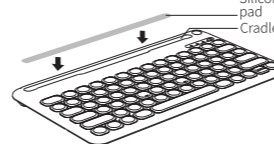


Enable Wireless function, enter searching & pairing status, select the Wireless: Baseus K02 Keyboard



Silicon Pad

Install the silicon pad into the cradle, and place the tablet or cellphone(caseless) into the cradle.



Function Combinations

Key Icon	Mac OS System Function	Windows System Function	iPAD System Function	三星A6 System Function	Key Icon	Mac OS System Function	Windows System Function	iPAD System Function	三星A6 System Function
[Esc]	Single click: ESC Fn+ESC: Return	Single click: ESC Fn+ESC: Web	Single click: Return to the homepage Fn+ESC: ESC		[F1]	Single click: F1 Fn+F1: Mute			
[F2]	Single click: F2 Fn+F2: Volume+		Single click: Volume- Fn+F2: F2		[F3]	Single click: F3 Fn+F3: Volume+		Single click: Volume + Fn+F3: F3	
[F4]	Single click: F4 Fn+F4: Previous		Single click: Previous Fn+F4: F4		[F5]	Single click: F5 Fn+F5: Play/pause		Single click: Play/pause Fn+F5: F5	
[F6]	Single click: F6 Fn+F6: Next		Single click: Next Fn+F6: F6		[F7]	Single click: F7 Fn+F7: Screenshot		Single click: Screenshot Fn+F7: F7	
[F8]	Single click: F8 Fn+F8: Emoji window		Single click: No function Fn+F8: F8		[F9]	Single click: F9 Fn+F9: Launch pad		Single click: Return to the homepage Fn+F9: F9	
[F10]	Single click: F10 Short press Fn+ F10: Switch Wireless 1 channel Press and hold Fn+ F10 for 3s: Wireless 1 code match and broadcast				[F11]	Single click: F11 Short press Fn+ F11: Switch Wireless 2 channel Press and hold Fn+ F11 for 3s: Wireless 2 code match and broadcast			
[F12]	Single click: F12 Short press Fn+ F12: Switch Wireless 3 channel Press and hold Fn+ F12 for 3s: Wireless 3 code match and broadcast.				[DEL]	Single click: DEL Fn+ delete: lock			
[Tab]	Single click: Tab Fn+ tab: lock screen				[Caps Lock]	Single click: Cap Fn+ caps lock: Search			
[Up Arrow]	Single click: Up key Fn+ PgUp: Page head		Single click: Up key Fn+ PgUp: PgUp		[Down Arrow]	Single click: Down key Fn+ PgDn: Page bottom		Single click: Down key Fn+ PgDn: PgDn	
[Left Arrow]	Single click: Left key Fn+ Home: Line head		Single click: Left key Fn+ Home: Home		[Right Arrow]	Single click: Right key Fn+ End: Line end		Single click: Right key Fn+ End: End	
[Power]	Power switch Push to the left to power off Push to the right to power on								

Warnings

- Because the product contains a battery, it should never be exposed to direct sunlight, excessive heat, or a high-intensity magnetic field.
- Never use it in a wet environment; instead, keep it dry. Please use a soft and dry cloth to clean the product.
- A professional should only dismantle the product; otherwise, it may catch fire or be completely damaged.
- Powering off the product before long-term idling is recommended to reduce power loss and extend its life.

Declaration on hazardous substances and elements contained in electronic products

Part Description	Hazardous substances and elements					
	Lead (Pb)	Mercury (Hg)	Cadmium (Cd)	Hexavalent chromium (CrVI)	Polybrominated Biphenyls (PBB)	Polybrominated Biphenyl ethers (PBDE)
PCB	X	O	O	O	O	O
Plastic	O	O	O	O	O	O
Accessory	O	O	O	O	O	O

This form is compiled in accordance with SJ/T 11364. O:It indicates that the content of the harmful substance in all homogeneous materials of the component is below the limit specified in GB/T 26572 standard. X: The content of harmful substances in at least one homogeneous material of this part exceeds the limit stipulated in GB/T 26572 standard.

Warm Tip: The 10-year icon refers to the "effective life of environmental protection", not the product quality assurance period. Electronic products all contain harmful substances such as lead, mercury and cadmium. Once they are overused, harmful substances may leak or mutate, cause pollution to the environment, or cause serious damage to people and property. The term of "environmental protection year" means that all electronic products will be required to use within this effective period. We will no longer be responsible for the quality of the products due to the safety risks that arise after the safe use period.

Specifications

Name: Baseus K02 Ultra-thin Wireless Keyboard Time to fully charge: < 3 hours
Model No.: BS-K02 Shallow sleep period: Enter auto sleep after idling for 3 min.
Wireless version: Wireless 5.1 Deep sleep period: Enter auto sleep after idling for 10 min.
Transmission distance: 10m Compatible with: Windows, Apple OS, iOS, Android, Harmony OS
Battery capacity: 1000mAh Dimensions: 294×169×19.5mm
Standby current: 0.7mA
* The data source listed above represent measured values from the Baseus laboratory, although they may differ or be erroneous due to changes in the actual environment.

Content

Wireless keyboard × 1, Silicone pad × 1, USB cable × 1, User manual × 1

It is hereby declared that BS-K02, a product model of Shenzhen Baseus Technology Co., Ltd., Ltd., complies with the provisions of Directive 2014/53/EU, Directive 2011/65/EU. The full text of the CE Declaration of Conformity can be found on the following website: www.baseus.com

特此声明,深圳倍息科技有限公司的产品型号为:BS-K02符合指令2014/53/EU,2011/65/EU的规定,欧盟符合性声明全文可在以下网站查看:www.baseus.com

This device complies with part 15 of the FCC Rules.Operation is subject to the following two conditions:(1) this device may not cause harmful interference and (2) this device must accept any interference received, including interference that may cause undesired operation. Any changes or modifications not expressly approved by the party responsible for compliance could void the user's authority to use the equipment. NOTE: This equipment has been tested and found to comply with the limits for a Class B digital device pursuant to Part 15 of the FCC Rules. These limits are designed to provide reasonable protection against harmful interference in a residential installation. This equipment generates, uses and can radiate radio frequency energy and if not installed and used in accordance with the instructions, may cause harmful interference to radio communications.However there is no guarantee that interference will not occur in a particular installation. If this equipment does cause harmful interference to radio or television reception, which can be determined by turning the equipment off and on, the user is encouraged to try to correct the interference by one or more of the following measures: -Reorient or relocate the receiving antenna. -Increase the separation between the equipment and receiver. -Connect the equipment into an outlet on a circuit different from that to which the receiver is connected. -Consult the dealer or an experienced radio/TV technician for help.

This equipment complies with the provisions of Directive 2012/19/EU and Directive 2006/66/EC. It is strictly forbidden to dispose of this equipment with ordinary trash; it must be recycled. This symbol indicates that the product shall not be treated as regular domestic trash, and must be delivered to a recycling center that is capable of recycling electronic and electrical equipment.

此设备符合欧盟指令2012/19/EU和2006/66/EC的规定,此设备不得与普通废弃物一起处理,必须回收利用,此符号标明本产品不得作为生活垃圾处理,而必须将本产品交回相应的回收点,进行电子电气设备回收处理。



警告 请自行拆卸维修, 有任何产品问题请联系售后客服处理。 Please keep the product away from fire source and do not dismantle or repair the product by yourself. Please contact our customer service for help if you have any problem with the product.



制造商: 深圳市倍思科技有限公司
地址: 深圳市福田区华强南路侨城国际社区壹方城3008号信息智能园B座二楼
执行标准: Q/BASEUS 082
网址: 4000112711 网址: www.baseus.com
官方网站: www.baseus.com
Manufacturer: Shenzhen Baseus Technology Co., Ltd.
Address: 2nd Floor, Building 03, Baseus Intelligence Park, No.2008, Xuegang Rd, Gangtou Community, Bantian Street, Longgang District, Shenzhen
Executive Standard: Q/BASEUS 082
Hotline: 4000112711 Website: www.baseus.com
Official After-sales E-mail address: service@baseus.com
倍思设计/Designed by Baseus
中国制造/Made in China