

Guangzhou Xaircraft Technology CO.,LTD

Federal Communications Commission

7435 Oakland Mills Road

Columbia MD 21046

Attn: OET Dept.

Ref: FCC Class II Permissive Change for FCC ID: 2A46G-EG25-G

(Original Grant date: 08/03/2022)

Applicant: Guangzhou Xaircraft Technology CO.,LTD

Dear Examiner,

This is to request a Class II permissive change for FCC ID: 2A46G-EG25-G

Product description: LTE Module

originally granted on 08/03/2022

The major change filed under this application is:

For the above indicated device and pursuant to CFR 2.1043 Guangzhou Xaircraft Technology CO.,LTD. Hereby requests the evaluation of a Class II permissive change for FCC as described below.

The major change filed under this application is:

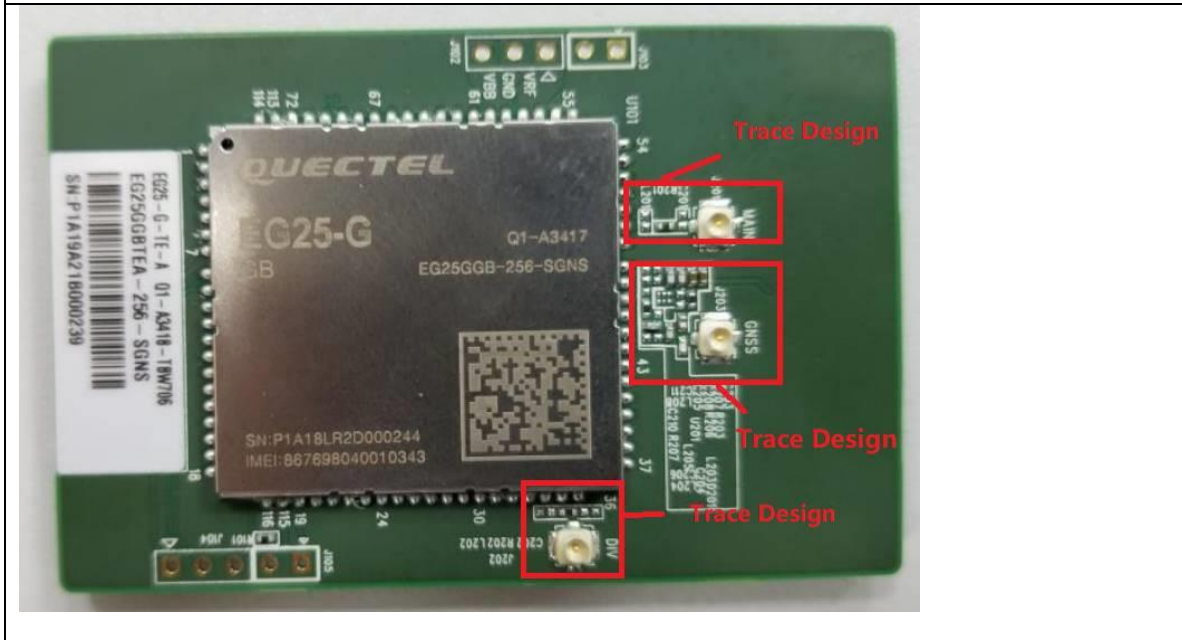
1. Change antenna type and antenna gain

Original Antenna		New Antenna	
Type	External antenna	Type	FPC antenna
Gain	GSM850: 2.29dBi; GSM1900:1.59dBi ; WCDMA BAND II:1.59dBi ; WCDMA BAND VI:2dBi ; LTE BAND 2:1.59dBi; LTE BAND 4:2dBi; LTE BAND 5:2.29dBi; LTE BAND 7: 3dBi; LTE BAND 12: 3.26dBi; LTE BAND 13: 4.45dBi; LTE BAND 25: 1.59dBi; LTE BAND 26: 2.53dBi;	Gain	GSM850: 1.2dBi; GSM1900:2.5dBi ; WCDMA BAND II:2.5dBi ; WCDMA BAND VI:2.8dBi ; LTE BAND 2:2.5dBi; LTE BAND 4:2.8dBi; LTE BAND 5:1.2dBi; LTE BAND 7: 2dBi; LTE BAND 12: -2dBi; LTE BAND 13: -2dBi; LTE BAND 25: 2.5dBi; LTE BAND 26: 1.2dBi;

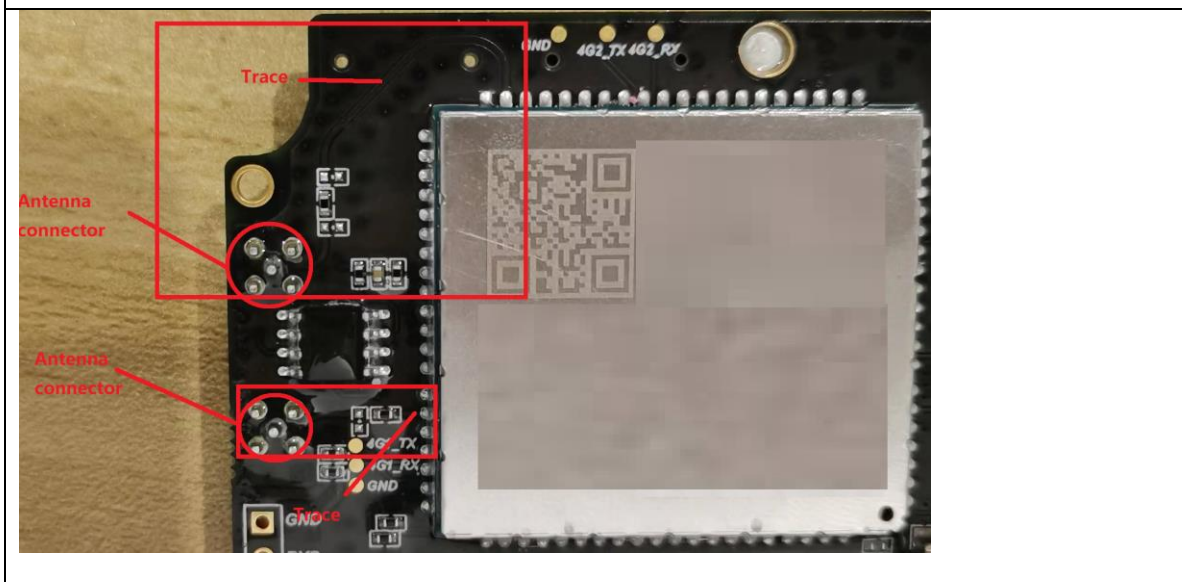
LTE BAND 38: 2.06dBi; LTE BAND 41: 3dBi;	LTE BAND 38: 2dBi; LTE BAND 41: 2dBi;
---	--

2. Change the trace design

Original



New



Guangzhou Xaircraft Technology CO.,LTD

3. GNSS is disabled by software.
4. WCDMA B5 is disabled by manufacturer, and end user can't access.

If you have any questions regarding this application, please feel free to contact me.

Best Regards,

(Signature*)

A handwritten signature in cursive script that reads "Zoe Qin". The signature is written in black ink and is positioned above a horizontal line.

Company Name: Guangzhou Xaircraft Technology CO.,LTD

Contact Name: Zoe Qin

Title of Person: Product Certification Engineer

Address: Block C, 115 Gaopu Rd, Tianhe Dist Guangzhou Guang-dong 510663 China

Date: 07/26/2022