

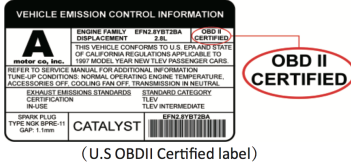
Vgate vLinker BM+ Quick Start Guide for iOS and Android



1. How do I know whether my vehicle is OBDII compliant?

1996 or newer model year vehicle sold in the United States. United States legislation requires all cars and light trucks model year (MY) 1996 and newer to be OBD2 compliant.

2001 or newer model year gasoline vehicle sold in the European Union. 2004 or newer model year diesel vehicle sold in the European Union.



2. I want to know which OBDII protocols supported by vLinker BM+?

√ SAE J1850 PWM √ ISO 14230-4 KWP √ SAE J1850 VPW
√ ISO 15765-4 CAN √ ISO 9141-2

3. I want to know which App does vLinker BM+ support?

vLinker BM+ BLE is used in many apps, such as TORQUE Lite/Pro, OBD Fusion, DashCommand, Car Scanner ELM OBD2, Carista OBD2, BimmerCode, BimmerLink, JScan, OBD Auto Doctor, LeafSpy, Dr.Prius, TrackAddict, Harry's LapTimer, inCarDoc, etc.

Many apps may be added to the compatibility list. Product page will be updated accordingly or contact us regarding app compatibility.

vLinker BM Series is recommended by BimmerCode and BimmerLink APP.

4. Plug vLinker BM+ into the OBD port.

The OBDII DLC is usually located under instrument panel (Dash) on the driver's side.
If you want to know more about DLC, please visit:
[https://en.wikipedia.org/wiki/Data_link_connector_\(automotive\)](https://en.wikipedia.org/wiki/Data_link_connector_(automotive))



5. Turn ignition to Key On, Engine Off Position.

"POWER" green LED is turn on, and the "Bluetooth" blue LED starts to blink twice, the "OBD" orange LED and "HOST" red LED blink once. —LEDs are off? Check vehicle for blown fuses.

6. BimmerCode Connection Guide (for example)

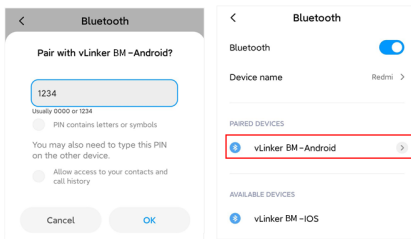
③ Android system

Step 1: Insert the adapter into the OBD interface of the car. Turn ignition to Key On Engine Off Position. Open the **Bluetooth** settings. Search for the device name "**vLinker BM-Android**" and click Pair.

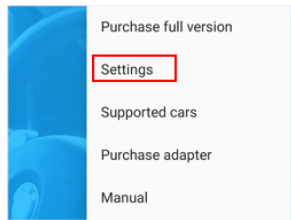


Note: Please select the Bluetooth Device Name "vLinker BM-Android" (Searching for Bluetooth may take some time.)

Step 2: Enter the pairing code: **1234** If the pairing is successful, you can open the APP to set up the connection.

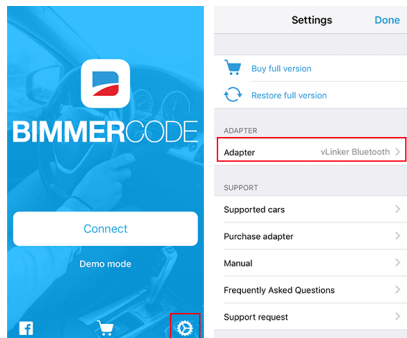


Step 3: Open the app's **Settings**.



Step 2: Open BimmerCode APP, Click **Settings** menu page.

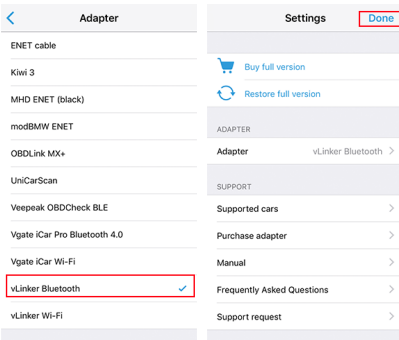
Step 3: Click **Adapter**.



vLinker BM+ can support G series, F series, R series, I series and E Series in BimmerCode app.

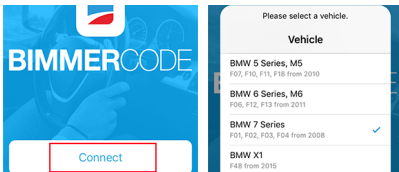
Step 4: Select Adapter for "**vLinker Bluetooth**", then click on the upper left corner to return.

Step 5: Click "**Done**" back to the main page of the app.

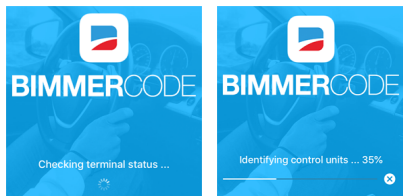


Step 6: Enter the main page, click **Connect**.

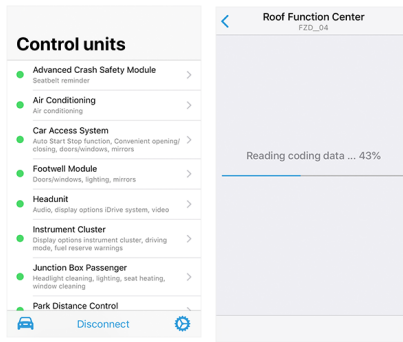
Step 7: Choose your vehicle model (eg: BMW 7 Series...)



Step 8: Wait for the BimmerCode APP to communicate with the car.



Step 9: If the communication is successful, you can select the control unit you want...



7. BimmerCode is a very powerful software.

① Allow you to code the control units in your BMW or Mini to unlock hidden features and customize your car to your liking.

② Activate the digital speed display in the instrument cluster or allow your passengers to watch videos while driving in the iDrive system.

③ Do you want to disable the Auto Start/Stop function or the Active Sound Design?

You will be able to code this and much more by yourself with the BimmerCode app.

8. If you want to get more data from your BMW, please choose the BimmerLink App.

BimmerLink for iOS/Android is the direct link to your BMW or Mini.

Using vLinker BM+ Bluetooth you can read trouble codes or display sensor values in realtime, check the current state of the DPF in your car or register a new battery after replacement.

BimmerLink even allows you to remotely control the exhaust flap or mute the Active Sound Design in your car.

Need Help?
Please email to us at any time: sale@vgate.com.cn
We will reply you within 24 hours of the working day.

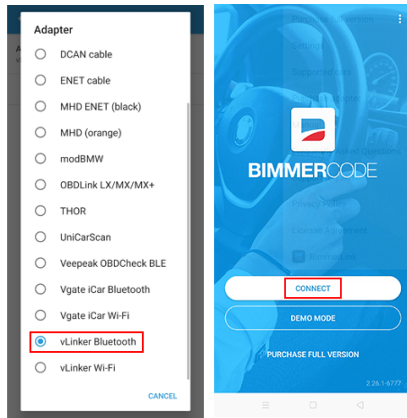
Product Upgrade:

Website: <http://www.vgatemall.com/downloadcenter>
To upgrade the product, please download the upgrade package and user manual of the corresponding model.



Step 4: Select Adapter "**vLinker Bluetooth**"

Step 5: Return to the main page of the app, click **CONNECT**.



IMPORTANT NOTE:
When you configure your phone, in order to get more engine data, you can start your engine.

⑤ iOS system

Step 1: Insert the product into the OBD interface of the car. Turn ignition to Key On Engine Off Position. Enable your phone **Bluetooth**. (Just enable Bluetooth button on the iOS device and continue to the OBD app setting.)



IMPORTANT NOTE:
Can not see Bluetooth device name in iPhone?! Don't worry. This device only require to configure Bluetooth device name in the OBD app setting. Just enable Bluetooth button on the iOS device and continue to the OBD app setting in Step 2
ONLY iOS supported Bluetooth profiles can show device name. Bluetooth LE 4.0 technology isn't apply for the supported Bluetooth profiles from iOS, so user can not find vLinker BM Bluetooth device name.
For iOS supported Bluetooth profiles, please refer check this page: <https://support.apple.com/en-us/HT204387>

FCC Warning:

Any Changes or modifications not expressly approved by the party responsible for compliance could void the user's authority to operate the equipment.

This device complies with part 15 of the FCC Rules. Operation is subject to the following two conditions:

(1) This device may not cause harmful interference, and

(2) this device must accept any interference received, including interference that may cause undesired operation.

Note: This equipment has been tested and found to comply with the limits for a Class B digital device, pursuant to part 15 of the FCC Rules. These limits are designed to provide reasonable protection against harmful interference in a residential installation. This equipment generates uses and can radiate radio frequency energy and, if not installed and used in accordance with the instructions, may cause harmful interference to radio communications. However, there is no guarantee that interference will not occur in a particular installation. If this equipment does cause harmful interference to radio or television reception, which can be determined by turning the equipment off and on, the user is encouraged to try to correct the interference by one or more of the following measures:

- Reorient or relocate the receiving antenna.
- Increase the separation between the equipment and receiver.
- Connect the equipment into an outlet on a circuit different from that to which the receiver is connected.
- Consult the dealer or an experienced radio/TV technician for help.

This transmitter must not be co-located or operating in conjunction with any other antenna or transmitter. This equipment complies with FCC radiation exposure limits set forth for an uncontrolled environment. This equipment should be installed and operated with minimum distance 20cm between the radiator & your body.