

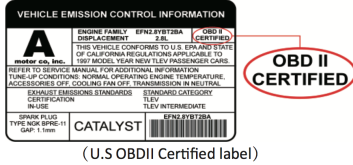
Vgate vLinker MC Quick Start Guidefor Android and Windows



1. How do I know whether my vehicle is OBDII compliant?

1996 or newer model year vehicle sold in the United States. United States legislation requires all cars and light trucks model year (MY) 1996 and newer to be OBD2 compliant.

2001 or newer model year gasoline vehicle sold in the European Union. 2004 or newer model year diesel vehicle sold in the European Union.



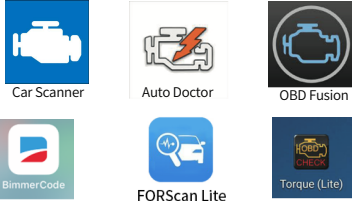
2. I want to know which OBDII protocols supported by vLinker MC?

- ✓ SAE J1850 PWM
- ✓ SAE J1850 VPW
- ✓ ISO 9141-2
- ✓ ISO 14230-4(slow)
- ✓ ISO 14230-4(fast)
- ✓ ISO 15765-4(CAN)
- ✓ SAE J1939(CAN)
- ✓ ISO 11898(raw can)
- ✓ Single Wire CAN(GMLAN)
- ✓ Medium Speed CAN(MS-CAN)

3. Download & install APP.

- ✓ Torque Lite<most popular Lite version is free>
- ✓ OBD Auto Doctor<Excellent Free app, Upgrade to Pro in-app>
- ✓ OBD Fusion<Excellent 3rd party app>
- ✓ BimmerCode<download from google play of Android>
- Allows you to code the control units in your BMW or mini to unlock hidden features and customize your car to your liking.
- ✓ FORScan for Windows<Download from www.forscan.org>and for Android <download from google play>

FORScan is a powerful software scanner for Ford, Mazda, Lincoln and Mercury vehicles, designed to work over OBDII protocol and J2534 Pass-Thru compatible adapters.



4. I want to know which App does vLinker MC support?

NOTE:
vLinker MC can support many apps, such as TORQUE Lite/Pro, OBD Fusion, DashCommand, CAR SCANNER ELM OBD2, Carista OBD2, BimmerCode, BimmerLink, JScan, OBD Auto Doctor, LeafSpy, Dr.Prius, TrackAddict, Harry's LapTimer, FORScan Lite, Garage Pro, etc.

Many apps may be added to the compatibility list. Product page will be updated accordingly or contact us regarding app compatibility.

5. Plug vLinker MC into the OBD port.

The OBDII DLC is usually located under instrument panel (Dash) on the driver's side.
If you want to know more about DLC, please visit:
[https://en.wikipedia.org/wiki/Data_link_connector_\(automotive\)](https://en.wikipedia.org/wiki/Data_link_connector_(automotive))



6. Turn ignition to Key On, Engine Off Position.



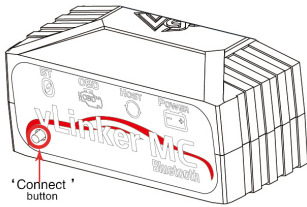
"POWER" red LED is turn on, and the "BT" blue LED starts to blink slowly, the "OBD" green LED and "HOST" orange LED blink once. —LEDs are off? Check vehicle for blown fuses.

7. Torque(Lite) Connection Guide for Android (for example)

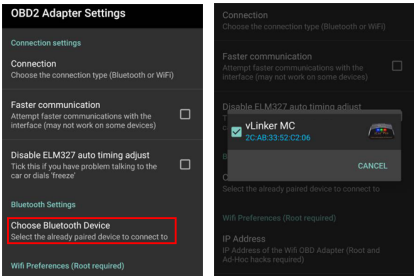
Step 1: Insert the adapter into the OBD interface of the car. Turn ignition to Key On, Engine Off Position.

Press the "Connect" button on vLinker MC

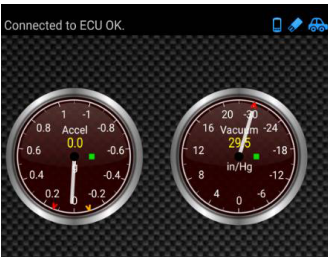
IMPORTANT NOTE



Step 8: Choose Bluetooth Device "vLinker MC".



Step 9: If the communication is successful, you can select the control unit you want...



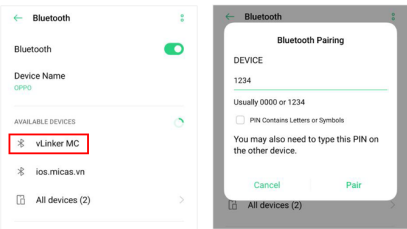
8. Car Scanner Connection Guide for Android (for example)

Step 1: Insert the product into the OBD interface of the car. Turn ignition to Key On, Engine Off Position.

Press the "Connect" button on vLinker MC

Open the **Bluetooth** settings. Search for the device name "vLinker MC" and click Pair.

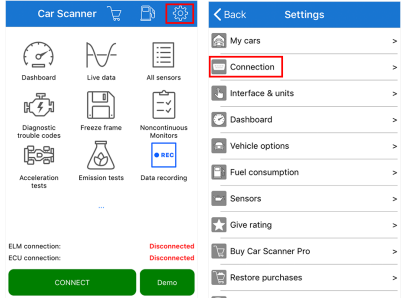
Step 2: Enter the pairing code: 1234 If the pairing is successful, you can open the APP to set up the connection.



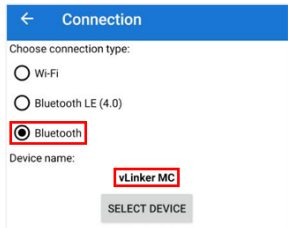
IMPORTANT NOTE:
Different OBD II app has different Bluetooth setting steps. Please follow the steps on the app to configure the setting.

Step 3: Open Car Scanner APP, Click

Step 4: Click "Connection".

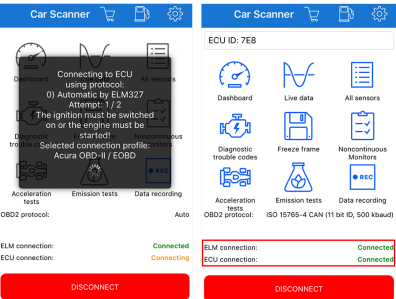


Step 5: Select "Bluetooth", Device name select "vLinker MC".

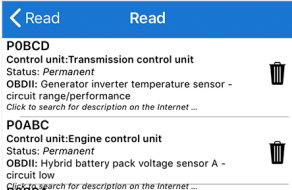


Step 6: Return to the main page and click "CONNECT". This may take a few minutes.

Step 7: ELM and ECU are successfully connected.



Step 8: If the communication is successful, you can select the control unit you want...



Features of vLinker MC

- Automatically OBD device wake up and Super Power Saving on vLinker series
- ✓ Allow the user to leave the vLinker MC in OBD Socket without unplug and plug operation. Supper low power consumption <sleep mode> is low to " 3mA" level.
- ✓ Wake up vLinker MC in standby mode by pressing the key.

Need Help?
Please email to us at any time: sale@vgate.com.cn
We will reply you within 24 hours of the working day.

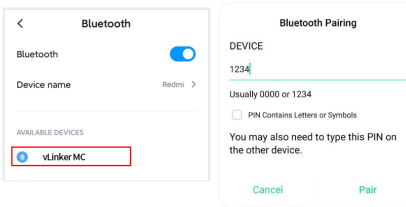
Product Upgrade:

Website: <http://www.vgatemall.com/downloadcenter>
To upgrade the product, please download the upgrade package and user manual of the corresponding model.



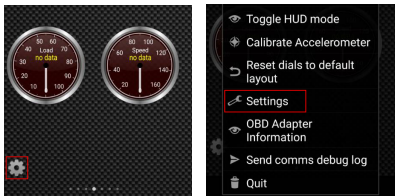
Step 2: Open the **Bluetooth** settings. Search for the device name "vLinker MC" and click Pair.

Step 3: Enter the pairing code: 1234 If the pairing is successful, you can open the APP to set up the connection.

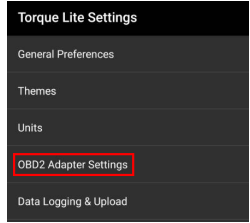


Note: Please select the Bluetooth Device Name "vLinker MC" (Searching for Bluetooth may take some time.)

Step 4: Choose Open the app's **Settings**.

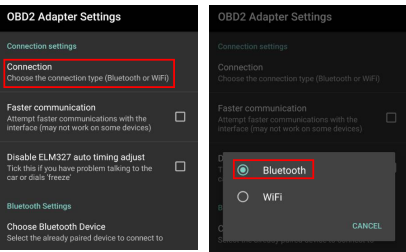


Step 5: Select OBD2 Adapter Settings.



Step 6: Click Connection.

Step 7: Choose the connection type **Bluetooth**.



This transmitter must not be co-located or operating in conjunction with any other antenna or transmitter. This equipment complies with FCC radiation exposure limits set forth for an uncontrolled environment. This equipment should be installed and operated with minimum distance 20cm between the radiator & your body.

FCC Warning:
Any Changes or modifications not expressly approved by the party responsible for compliance could void the user's authority to operate the equipment.
This device complies with part 15 of the FCC Rules. Operation is subject to the following two conditions:
(1) This device may not cause harmful interference, and
(2) this device must accept any interference received, including interference that may cause undesired operation.

Note: This equipment has been tested and found to comply with the limits for a Class B digital device, pursuant to part 15 of the FCC Rules. These limits are designed to provide reasonable protection against harmful interference in a residential installation. This equipment generates uses and can radiate radio frequency energy and, if not installed and used in accordance with the instructions, may cause harmful interference to radio communications. However, there is no guarantee that interference will not occur in a particular installation. If this equipment does cause harmful interference to radio or television reception, which can be determined by turning the equipment off and on, the user is encouraged to try to correct the interference by one or more of the following measures:

- Reorient or relocate the receiving antenna.
- Increase the separation between the equipment and receiver.
- Connect the equipment into an outlet on a circuit different from that to which the receiver is connected.
- Consult the dealer or an experienced radio/TV technician for help.