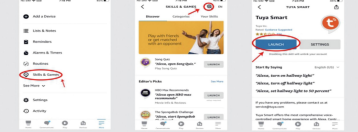
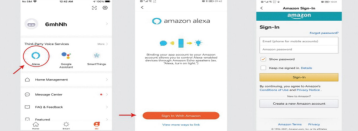


How to connect the device to Amazon Alexa

1. Open the Amazon Alexa App, tap "skills" on the menu to go to the Amazon skill store.
2. Search the Skill name "Tuya Smart" in the search bar.
3. Enable the Skill and type in your login information from the App account to finish the account linking.



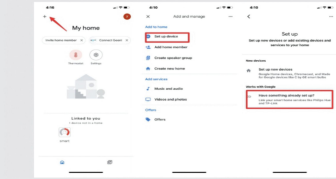
4. Bind the account, open the Tuya Smart APP, and click "My-Third-Party Voice Services-Alexa".



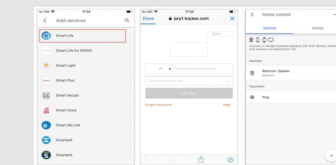
5. Tap "Discover Devices" to sync your devices to Alexa, after about 20s, the devices will be discovered and Alexa will tell you "I found xx devices", then you can control your devices using voice through your Amazon Alexa devices. The following voice commands are supported:
Alexa, turn on/off "xxx"
Alexa, set the "xx" to [color]
Alexa, set the "xx" to [percentage]
Alexa, set the brightness of "xxx" to [percentage]

How to connect the device to Google Assistant

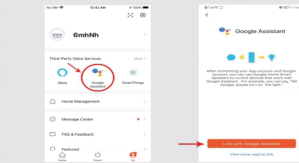
1. On the homepage of Google Home App, click the "+" button in the upper left corner, select "Set up device", and select "Have something already set up" under the "Set up" list.



2. Find Tuya Smart in the list and open it. On the new page, select the country where your Smart Life App account is located, enter your Tuya Smart App account and password, and click Link Now. After binding, your device will appear in the Devices list of Home Control.

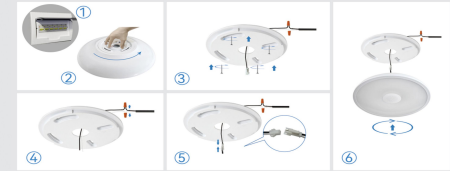


3. Bind the account, open the Tuya Smart App, and click "Me-More Services-Google Assistant".



4. Now, you can use Google Home to control your smart devices. Take bedroom light as an example, the supported commands include (Google Home currently only supports English commands):
•Ok Google, turn on bedroom light. (Switch lights or other devices)
•Ok Google, turn off bedroom light. (Switch lights or other devices)
•Ok Google, set bedroom light to 50 percent. (Set the light to any brightness)
•Ok Google, brighten bedroom light. (turn the light on)
•Ok Google, dim bedroom light. (Dim the light)
•Ok Google, set bedroom light to red. (Set the color of the light, only color lights support)

Our lamps have a one-year warranty. If you have any problems installing or using these lamps, please contact us via email or Amazon buyer message: senjlexing@outlook.com "Our company will solve any product problems for you, thank you very much."



- Step 1: Before installation, turn off the main power switch at home to avoid electric shock during installation.
- Step 2: Unscrew the hanging plate of the ceiling lamp
- Step 3: Fix the hanging board to the ceiling with three or four screws.
- Step 4: Connect the household electric wire to the wiring terminal, and pass the connected electric wire through the hanging plate. (Black is the live wire "L", White is the neutral wire "N")
- Step 5: Connect the terminal wire already connected to the household electric wire to the terminal wire of the ceiling lamp
- Step 6: Rotate the lamp body clockwise and fix it on the hanging plate.



- Step 1: Lock the hanging plate on the lamp by one screw
- Step 2: Connect the wire terminal in the socket (as the E27 socket shown in Figure 2) to the wire terminal on the lamp
- Step 3: Fix the socket to the lamp by three screws
- Step 4: Install the socket to the household connector

This device complies with part 15 of the FCC Rules. Operation is subject to the following two conditions: (1) This device may not cause harmful interference, and (2) this device must accept any interference received, including interference that may cause undesired operation. Any changes or modifications not expressly approved by the party responsible for compliance could void the user's authority to operate the equipment.
NOTE: This equipment has been tested and found to comply with the limits for a Class B digital device, pursuant to Part 15 of the FCC Rules. These limits are designed to provide reasonable protection against harmful interference in a residential installation. This equipment generates, uses and can radiate radio frequency energy and, if not installed and used in accordance with the instructions, may cause harmful interference to radio communications. However, there is no guarantee that interference will not occur in a particular installation. If this equipment does cause harmful interference to radio or television reception, which can be determined by turning the equipment off and on, the user is encouraged to try to correct the interference by one or more of the following measures: -- Reorient or relocate the receiving antenna. -- Increase the separation between the equipment and receiver. -- Connect the equipment into an outlet on a circuit different from that to which the receiver is connected. -- Consult the dealer or an experienced radio/TV technician for help.
The device has been evaluated to meet general RF exposure requirement. The device can be used in portable exposure condition without restriction.

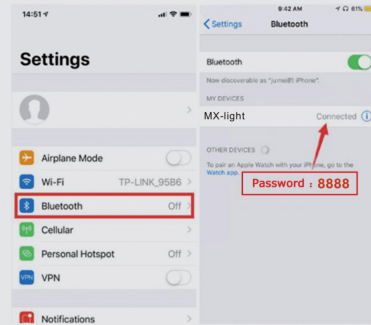
Smart Music LED Ceiling Light with Speaker English Manual

Bluetooth Connection

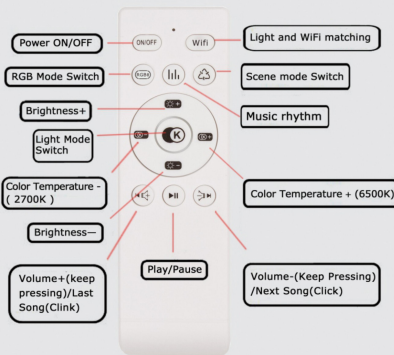
For the first time you use it or never pair with "MX-light" after moving the equipment, please have it paired according to the steps below.

Music Connection

Enter the System Settings - Bluetooth - to discover and connect the device name "MX-light". Once connected, you will hear the connection tone. The initial password is 8888.



Remote control instruction



- Remote Control Tips
1. Battery: 2PCS AAA Batteries
 2. How to pair remote:
Within 5 seconds after the lamp is powered on, press the pairing key and then click the WiFi button until the lamp flashes; Long press the WiFi button and the light keeps flashing to enter the network matching mode.

Take five minutes to log in to YouTube, and enter "ASALL-Smart Music Ceiling Light-001" in the search to watch the entire application connection tutorial and product use video. (Or watch the video of the product page)

Download the APP registration

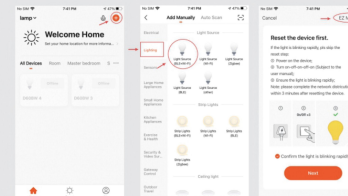
1. Search the keyword "Tuya Smart" in APP Store or Google Play to download the APP
2. Open the APP and register an account to login.



Tuya Smart

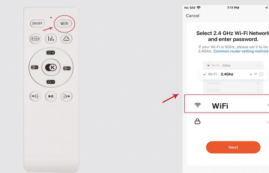
Connect the device to the internet

1. Power on the light and ensure your mobile device's Wi-Fi is turned on and is connected to your home Wi-Fi Network
Note: 2.4GHz b/g/n networks are compatible, 5GHz net networks are not compatible.
2. Tap the add icon "+" in the right and select "Lighting" and "Light Source(BLE+Wi-Fi)".
3. Select "EZ Mode" in the top right.



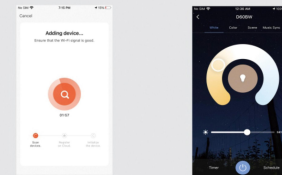
4. Press the "WiFi" button of remote control for 5 seconds, the light will blink this time.

5. Enter your home's wifi in this step, And then connect the phones WiFi to the device's hotspot back to the APP and continue to add devices.



6. The APP will automatically search for nearby WiFi devices.

7. Once the light was initialized successfully, you will be able to quickly control it within the APP.



Reminder: The first connection may take a few minutes, please be patient.

578*210双面157克铜版纸1000张 对折两次折成A5

FCC Warning

This device complies with part 15 of the FCC rules. Operation is subject to the following two conditions: (1) this device may not cause harmful interference, and (2) this device must accept any inte rference received, including interference that may cause undesired operation.

Changes or modifications not expressly approved by the party responsible for compliance could void the user’s authority to operate the equipment.

NOTE: This equipment has been tested and found to comply with the limits for a Class B digital device, pursuant to part 15 of the FCC Rules. These limits are designed to provide reasonable protection against harmful interference in a residential installation. This equipment generates uses and can radiate radio frequency energy and, if not installed and used in accordance with the instructions, may cause harmful interference to radio communications. However, there is no guarantee that interference will not occur in a particular installation. If this equipment does cause harmful interferenceto radio or television reception, which can be determined by turning the equipment off and on, the user is encouraged to try to correct the interference by one or more of the following measures:

- Reorient or relocate the receiving antenna.
- Increase the separation between the equipment and receiver.
- Connect the equipment into an outlet on a circuit different from that to which the receiver is connected.
- Consult the dealer or an experienced radio/TV technician for help.

Radiation Exposure Statement

This equipment complies with FCC radiation exposure limits set forth for an uncontrolled environment. This equipment should be installed and operated with minimum distance 20cm between the radiator and your body.