

**KEMI
MOTO**



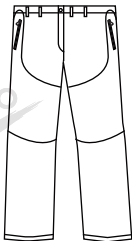
KEMIMOTO HEATED PANTS

User Guide

1 Year Limited Warranty

F1107-00301

What's Included



HEATED PANTS X1



RECHARGEABLE BATTERY x1



USB POWER CABLE x1



WARNING

Read all safety warnings and instructions. Failure to follow warnings and instructions may result in electric shock, fire and/or serious injury. Save all warnings and instructions for future reference.

Cleaning Instruction



IMPORTANT: Disconnect and remove the battery from the zipper pocket, put the connector back, and zip up before washing the pants.

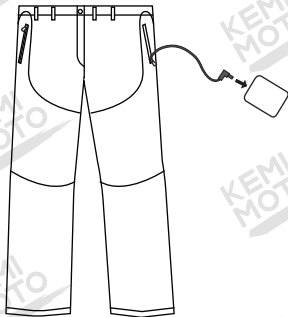
RECOMMEND TO USE MESH LAUNDRY BAG

- LINE DRY
- MACHINE WASH
- GENTLE CYCLE IN COLD WATER
- HAND WASH WITH COLD WATER
- ✗ DO NOT IRON
- ✗ DO NOT BLEACH
- ✗ DO NOT DRY CLEAN
- ✗ DO NOT WRING OR TWIST

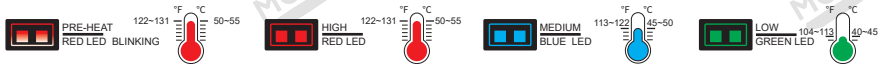


Operation Instruction

1. Connect the battery to the power cord in the pocket.
2. To turn on, press and hold the power button for 3 seconds; pressing the power button will toggle the heating level between high (red LED light), medium (blue LED light) and low (green LED light).
3. To shut down, long press the power button for 3 seconds until the LED light turns off.
4. Turn off the light: Press the light control button to turn off the switch button indicator light, but it is still working.
5. Protection function: When the temperature reaches 55°C, the pants stop heating, and continue heating after the temperature drops to 55°C.
6. Automatic power-off function: When you take off your pants but forget to turn off the button, the system detects that the pants have been in a static state for a long time, and it will automatically turn off the system.



Heat Setting Indicator



The heating level can be adjusted by pressing the power button. Each press will cycle through the apparel's temperature settings. At a room temperature of 77°F/25°C, the heat will rise to 122-131°F/50-55°C on high, 113-122°F/45-50°C on medium, and 104-113°F/40-45°C on low.

Battery Instruction

Cell Capacity	15000mAh (3.7V)/55.5Wh
Input	TYPE-C 5V/3A
Output	DC: 11.1V/2.5A USB: 5V/2.1A
Weight	9.52oz(270g)

NOTE :

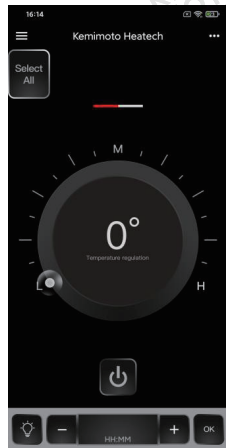
- Do not freeze or immerse the battery in water or any other liquid.
- Do not drop, disassemble, open, crush, bend, deform, puncture, shred, microwave, incinerate or paint the battery.
- Do not store your battery with metal objects, such as coins, keys or necklaces. If the battery terminals come in contact with metal objects, this may cause a fire.
- Recommended operating temperature of 14°F to 86°F (-10°C to 45°C).
- Fully charge before first use.
- Fully charge every 6 months if not in use to preserve the battery life.
- Keep the battery away from moisture. Store the battery pack where the relative humidity is $60 \pm 15\%$ RH.

BATTERY CHARGING :

1. Press the battery button to check the remaining power level or charging level.
2. Remove battery from the pants before charging and connect battery with charger.
3. It takes about 5-6 hours to fully charge a completely empty battery.

APP operation pages and instructions

- 1 Open the Heatech APP and enter the main page as shown in the figure below. (Upon first installation, location permission will be prompted and must be allowed.)



2 Click on the icon in the upper left corner to enter the device page. The App will automatically search for nearby heated clothing devices, as shown in the figure below.

(1) The types of devices include Cloth, Glove, Vest, and other series of devices. The App displays the device name as the type followed by the last four digits of the Mac address.

(2) In the “**Available devices**” module, simply click on the device name to automatically connect to the device and display it in the “**List of paired devices**” module.

(3) In the “**List of paired devices**” module, you can view the current status and battery level of the device, as well as modify the name, refresh, and delete operations.

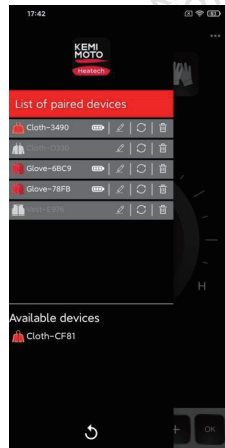
- If the device is powered off or not connected, the device icon will be displayed in white. If the device is powered on and connected, the icon will be displayed in red.

- Edit: Click Edit to edit the selected device name, up to a maximum of 14 characters. If the name is blank when saved, it will be modified back to the default name.

- Refresh: Generally used when the device is powered on again, clicking Refresh can quickly connect to it.

- Delete: Click Delete to delete the selected device. After deletion, the “**List of paired devices**” module will no longer display the device, but it can be reconnected in the “**Available devices**” module.

(4) Clicking the refresh icon at the bottom of the page can search for nearby heated clothing devices again.



3 On the main page, you can perform operations such as turning the device on or off, setting the gear position, adjusting the backlight, and setting the countdown timer.

- (1) All connected device types will be displayed on the main page. "SelectAll" can be used to select all or deselect all.
- (2) Different temperature values can be set on the temperature disk, with a default range of 35°C-55°C (95°F-131°F).
- (3) When switching to different gears, the device icon will display different colors accordingly, and the colors will be synchronized with the device's LED backlight.
- (4) Click the switch to turn on/off the selected device. The device icon will turn white when turned off and red when turned on.
- (5) Click the backlight switch to turn the backlight on/off for the selected device. When the backlight is turned off, switching gears or pressing the device button will cause it to briefly light up for 2-3 seconds before automatically turning off.
- (6) Set the countdown time and click OK to start the countdown operation. The device will automatically shut down after the countdown ends. Currently, the minimum countdown time is 15 minutes and the maximum is 6 hours.



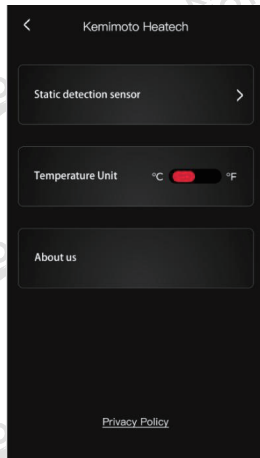
4 In the settings page, you can set the temperature unit and view the "About Us" page.

(1) **Static detection sensor:** Users can customize the three-axis function of the device to be turned off. After turning off, even if the device is inactive for ten minutes, it will not automatically shut down.

(2) **Temperature Unit:** Set the temperature unit according to actual needs, which can be set to °C or °F. After adjustment, the temperature on the main page will respond accordingly.

(3) **About Us:** View the "About Us" page, including the APP logo, website, and version number.

How to obtain the APP



Common issues with the APP and corresponding solutions

Serial Number	Problem Description	Problem Cause	Solution Method
1	Bluetooth connection failure	1) The device is disconnected from power. 2) The device is connected to another device. 3) Bluetooth permission issues.	1) Check the power supply and restart. 2) Exit the APP on other devices or disconnect from the device. 3) Find the APP permission settings and allow access to Bluetooth permissions.
2	Automatic shutdown of device	1) Power off the device. 2) Turn off the device. 3) Three-axis function of the device.	1) Check the power supply and restart. 2) Press and hold the device button to power on or use the App to turn on the device. 3) The device will automatically shut down after ten minutes of inactivity. This feature can be disabled in the settings if not needed.
3	Short backlight lighting time	1) The backlight function has been turned off.	1) In the App, set the backlight switch. If the backlight is off, it will automatically turn on for 3 seconds when using the button or setting the temperature in the App.
4	Device powers on normally, but not displayed in APP	1) The device is not paired. 2) The device is paired but not connected.	1) Add the device from the online devices to the paired devices. 2) Click on the device in the paired devices.
5	Temperature setting is invalid	1) The device is not selected.	1) Select the device to be set in the App, and a white frame will appear around the selected device.
6	Device status display viewing	1) The interface displays the status of the first selected device by default.	1) Deselect all and only select the device in question. 2) Deselect the device first and then select it again.

Safety Instruction



WARNING

Do not try to use this product outside of its designated use, as doing so might be dangerous.

- Do not use this heated pants with an infant, child, a helpless person, or anyone insensitive to heat, such as a person with poor blood circulation.
- If your health condition makes you sensitive to overheating, please consult your physician to determine whether it is appropriate to use this product.
- Do not allow the cords to be pinched or forced pull out.
- Not recommended to wear over bare skin.
- Never use it if inner liner is wet.
- Turn off the power immediately if discomfort occurs.

Please contact us if you have any questions



service@kemimoto.com



<http://www.kemimoto.com>

FCC Statement

This device complies with part 15 of the FCC Rules. Operation is subject to the following two conditions:

(1) This device may not cause harmful interference, and (2) this device must accept any interference received, including interference that may cause undesired operation.

Any Changes or modifications not expressly approved by the party responsible for compliance could void the user's authority to operate the equipment.

Note: This equipment has been tested and found to comply with the limits for a Class B digital device, pursuant to part 15 of the FCC Rules. These limits are designed to provide reasonable protection against harmful interference in a residential installation. This equipment generates uses and can radiate radio frequency energy and, if not installed and used in accordance with the instructions, may cause harmful interference to radio communications. However, there is no guarantee that interference will not occur in a particular installation. If this equipment does cause harmful interference to radio or television reception, which can be determined by turning the equipment off and on, the user is encouraged to try to correct the interference by one or more of the following measures: -Reorient or relocate the receiving antenna. -Increase the separation between the equipment and receiver. -Connect the equipment into an outlet on a circuit different from that to which the receiver is connected. -Consult the dealer or an experienced radio/TV technician for help.

The device has been evaluated to meet general RF exposure requirement. The device can be used in portable exposure condition without restriction.



Please contact us if you have any questions



service@kemimoto.com



<http://www.kemimoto.com>