

## BEFORE YOU BEGIN

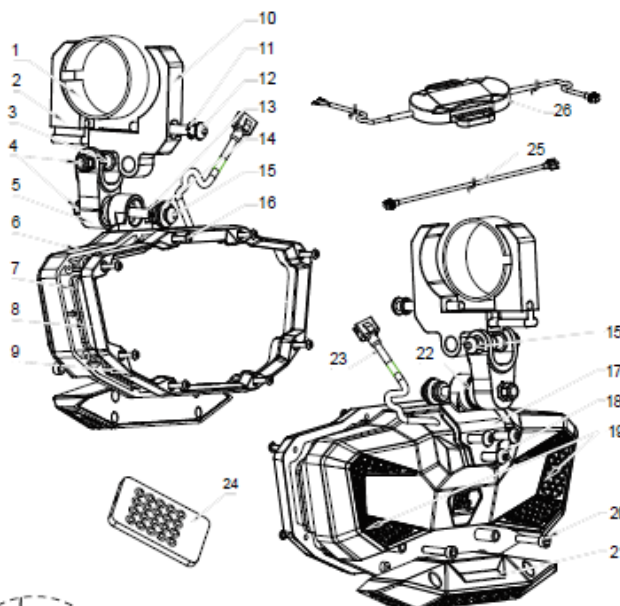
1. Read these instructions and check to be sure all parts and tools are accounted for.
2. If the vehicle is clean and free of other debris, it will be easy to install.

## IMPORTANT

1. Please read the installation instructions carefully before you start.
2. If the vehicle is clean and free of other debris, it will be easy to install.
3. For your safety and to ensure a satisfactory installation, please complete all the installation steps in the order shown below.

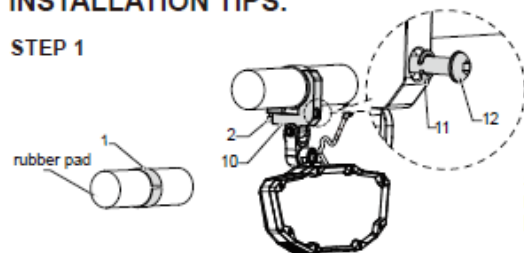
## PRODUCT INFORMATION:

- |                                      |    |
|--------------------------------------|----|
| 1. Rubber Pad                        | x1 |
| 2. Pipe Clamp -1                     | x1 |
| 3. T-type POM Sleeve                 | x2 |
| 4. M6 Lock Nut                       | x2 |
| 5. Y-type Bracket                    | x1 |
| 6. Mirror Shell                      | x1 |
| 7. EVA Explosion-proof Film          | x1 |
| 8. Convex Mirror R1300               | x1 |
| 9. Metal Frame                       | x1 |
| 10. Pipe Clamp-2                     | x1 |
| 11. M6 Metal Spring Washer           | x1 |
| 12. M6*L50 Hexagon Socket Screw      | x1 |
| 13. Plane Bearing                    | x1 |
| 14. M6*D15*1.5 Metal Gasket          | x2 |
| 15. M6*L30 Hexagon Socket Head Screw | x2 |
| 16. M3*L12 Self-tapping Screw        | x8 |
| 17. Support                          | x1 |
| 18. M5*L20 Hexagon Socket Screw      | x3 |
| 19. RGB Light                        | x1 |
| 20. M3*L20 Hexagon Socket Screw      | x2 |
| 21. Reading light (Emergency light)  | x1 |
| 22. POM Ball Head                    | x1 |
| 23. Power Cord                       | x1 |
| 24. Bluetooth Remote Control         | x1 |
| 25. Power Extension Cord             | x1 |
| 26. Bluetooth Controller             | x1 |



## INSTALLATION TIPS:

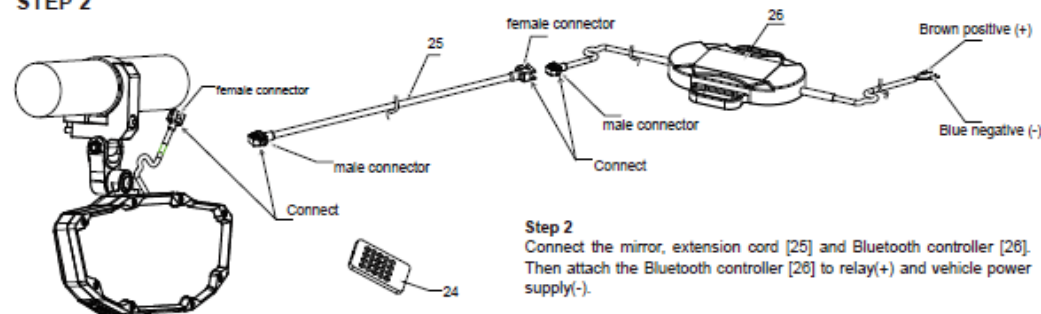
### STEP 1



#### Step 1

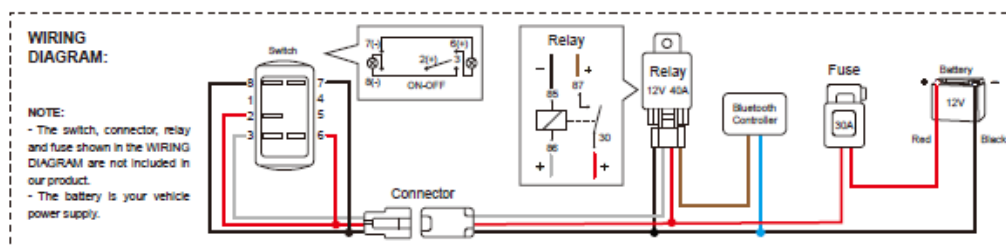
Place rubber pad [1] on roll bar. Install pipe clamp-1 [2] and pipe clamp-2 [10] with spring washer [11] and screw [12].

### STEP 2

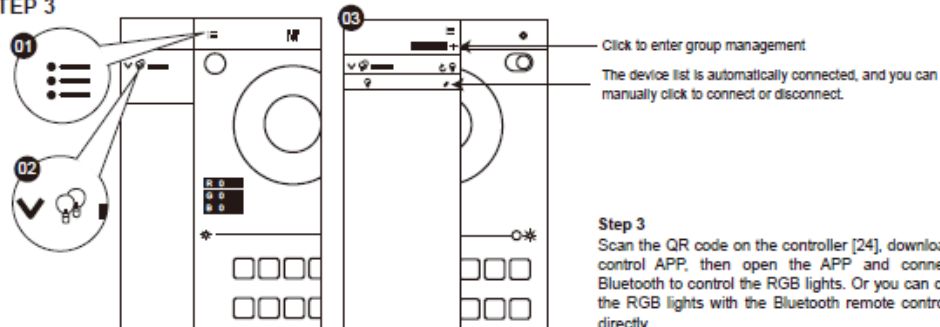


#### Step 2

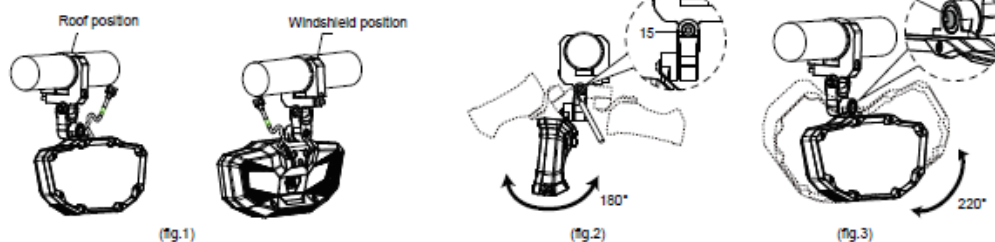
Connect the mirror, extension cord [25] and Bluetooth controller [26]. Then attach the Bluetooth controller [26] to relay(+) and vehicle power supply(-).



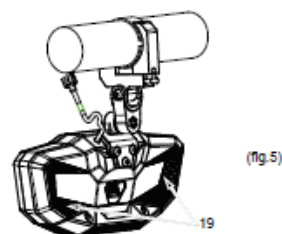
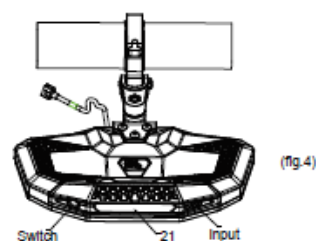
### STEP 3



### FUNCTION DESCRIPTION:



- 01)** It fits 1.5-2.0 inch diameter roll bar.
- 02)** As fig.1, the mirror will not affect the installation of the windshield and the roof, which perfectly solves the problem that the three cannot coexist.
- 03)** As fig.2, the mirror can be swung front and back about 180°. As fig.3, the mirror can be swung left and right about 220°. Tighten the screw [15] after finishing adjustment.
- NOTE:** Adding a through pipe can increase the force arm of the wrench, which makes it easier to tighten the screw [15].
- 04)** As fig.4, about the reading light [21]:
1. The reading light [21] is powered by an independent battery and needs to be charged. (TYPE C Input)
  - Charging time: 2.5 hours
  - Full charge endurance: 3 hours
  - The switch will turn red when charging
  - The red light will go out when full charge
- NOTE:** If you find the reading light [21] can not light on after receiving our product, please charge it fully first.
2. Light color: Red, white and green.
  3. Light mode: Monochromatic constant light and monochromatic flashing.
  4. Light control:
    - Short press the switch to light on.
    - Short press the switch to change light color and light mode.
    - Long press the switch over 3 seconds to light off.
  5. Battery: Capacity 850mAh; Voltage 4.2V; Current 500mA. USB Charging Cable: Voltage 5V; Current 1A.
- 05)** As fig.5, the RGB light [19] can be controlled by APP or remote control [24].



#### FCC Statement

Changes or modifications not expressly approved by the party responsible for compliance could void the user's authority to operate the equipment.

This equipment has been tested and found to comply with the limits for a Class B digital device, pursuant to Part 15 of the FCC Rules. These limits are designed to provide reasonable protection against harmful interference in a residential installation. This equipment generates uses and can radiate radio frequency energy and, if not installed and used in accordance with the instructions, may cause harmful interference to radio communications. However, there is no guarantee that interference will not occur in a particular installation. If this equipment does cause harmful interference to radio or television reception, which can be determined by turning the equipment off and on, the user is encouraged to try to correct the interference by one or more of the following measures:

- Reorient or relocate the receiving antenna.
- Increase the separation between the equipment and receiver.
- Connect the equipment into an outlet on a circuit different from that to which the receiver is connected.
- Consult the dealer or an experienced radio/TV technician for help

This device complies with part 15 of the FCC rules. Operation is subject to the following two conditions (1) this device may not cause harmful interference, and (2) this device must accept any interference received, including interference that may cause undesired operation.

This equipment complies with FCC radiation exposure limits set forth for an uncontrolled environment. This equipment should be installed and operated with minimum distance 20cm between the radiator & your body.