

User Instruction

24Key 2.4G TV led Strip Lights



Thank you for buying our product . To provide an excellent user experience, please install it according to this instruction and keep it for retention and further reference.

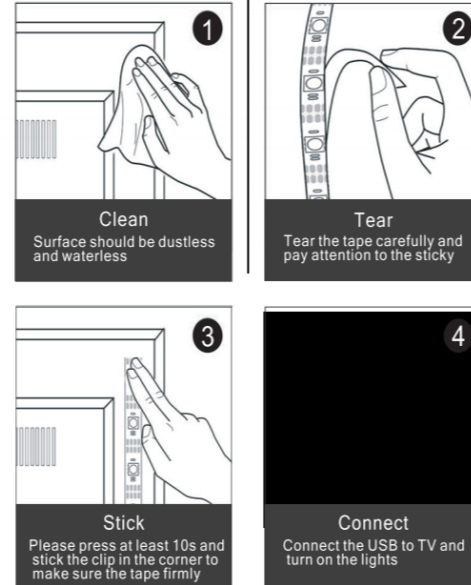
Precautions:

1. Before sticking strips to the back of TV , please be sure the surface is dry and clean.
2. Please do not light the strip on for over 5s when they are rolled on the plastic axle.
3. Please check the led strip carefully before installation.
4. Please ensure the power is OFF before wiring and installation.
5. The product led light belt is 5 Voltage.
6. Please pay attention to the voltage when increasing the power supply.

FAQ:

1. **How many times can Led strip light stick to a new surface ?**
We recommend sticking strips on clean surface by one times.
2. **Are LED strip lights waterproof ?**
There are two kinds of led strip light. If you choose the bare board, the lights has only IP62 Non-Waterproof rating. When you choose epoxy, the lights has IP65 waterproof rating.
3. **Can led strip lights be plugged directly into the mains?**
No, As led strip light are 5 Volt,Power by USB interface.
4. **Does TV backlight cuttable?**
YES. With the cut marks and cut off extra strips to adjust the length you need.
5. **Can the light strip be folded at the corner of the TV ?**
Yes,it can be folded. With matching clips at the corners for more solidity.

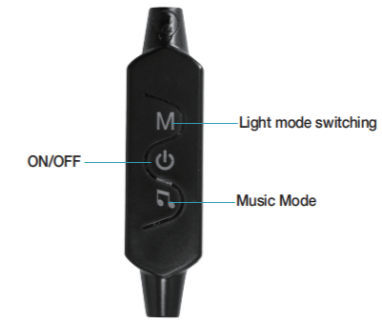
Installation Diagram



FCC WARNING

This device complies with part 15 of the FCC Rules. Operation is subject to the following two conditions:
(1) this device may not cause harmful interference, and (2) this device must accept any interference received, including interference that may cause undesired operation.
Any changes or modifications not expressly approved by the party responsible for compliance could void the user's authority to operate the equipment.
NOTE: This equipment has been tested and found to comply with the limits for a Class B digital device, pursuant to Part 15 of the FCC Rules. These limits are designed to provide reasonable protection against harmful interference in a residential installation. This equipment generates, uses and can radiate radio frequency energy and, if not installed and used in accordance with the instructions, may cause harmful interference to radio communications.
However, there is no guarantee that interference will not occur in a particular installation. If this equipment does cause harmful interference to radio or television reception, which can be determined by turning the equipment off and on, the user is encouraged to try to correct the interference by one or more of the following measures:
- Reorient or relocate the receiving antenna.
- Increase the separation between the equipment and receiver.
- Connect the equipment into an outlet on a circuit different from that to which the receiver is connected.
- Consult the dealer or an experienced radio/TV technician for help.
To maintain compliance with FCC's RF Exposure guidelines, This equipment should be installed and operated with minimum 20cm distance between the radiator and your body: Use only the supplied antenna

Controller mode



Light mode switching	10 switching modes
ON/OFF	Turn the light on/off
Music Mode	Press to enter music mode

APP mode

APP name is "duoCo Strip"
Please search for and install the app in the QR code on the back of the controller .



APP name is "duoCo Strip"
Please search for and install the app in the QR code on the back of the controller .



Functions are listed as follows:

1. **Adjust:** Adjust the brightness and color temperature of 16 million kinds of colors for monochrome LED strip
2. **Style:** Multiple modes to choose from, including stroboscopic, static, gradient, transition...a total of 200+ RGB diversified lighting modes, you can choose the appropriate mode according to the specific scene
3. **Music:** The led lights can change the color and speed of the light according to the rhythm of the music
4. **Mic:** Built-in high-sensitivity microphone,when you speak face to the mobile,the light strip will feel the size of your voice and the speed of speaking, and change the color and speed
5. **Schedule:** Select the date and time to turn on /off the timing light The lights will turn on /off for the time you set

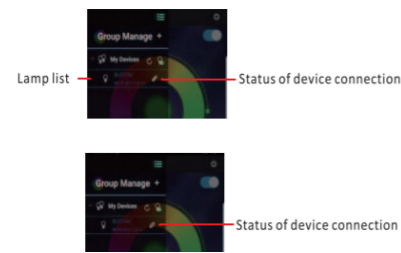
WARNING

- ★ DO NOT IMMERSE IN FIRE
- ★ CHILDREN UNDER 16 USE THIS PRODUCT SHOULD UNDER THE SUPERVISION OF ADULTS.

If you have any question after receiving the products, please contact our customer service, we will reply to you within 24 hours.



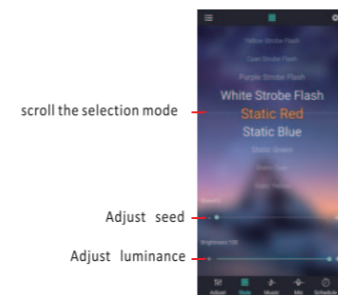
(1) Click to show the lamp list , view lamp list:



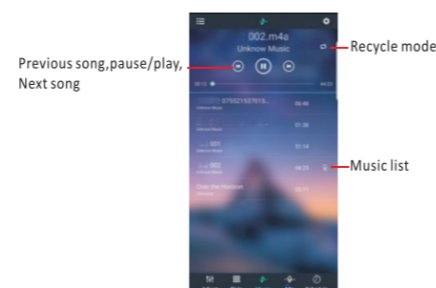
(2) Switch to color and brightness interface:



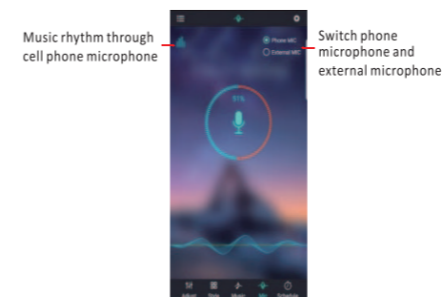
(3) Switch to the mode interface:



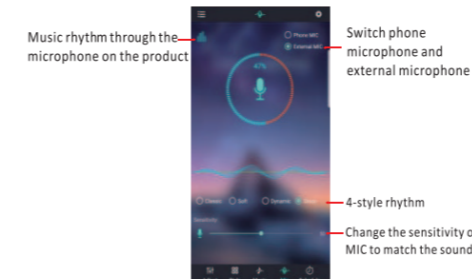
(4) Switch to the music rhythm:



(5) Switch to the microphone rhythm interface:



(6) Switch to the schedule:



(7) Switch to the modify pin sequence interface:



Local music:

1. Download local music on android phone:
 - (1) Android phone use music players to download songs or copy songs from computers to mobile phones.
 - (2) Restart duoCol Strip and switch to music Rhythm Interface to see the newly imported music files.
2. Download local music on iphone:
 - (1) Install itunes software on your computer(Apple or Windows)
 - (2) Log in to itunes with the same Apple ID account on the Iphone
 - (3) Use itunes to import downloaded music files on your computer
 - (4) The imported music files will be synchronized to the iphone in real time
 - (5) Restart and switch to music Rhythm Interface to see the newly imported music files