

Thank you for buying this product. To provide an excellent user experience, please install it according to these instructions and please read the user manual in the product folder for further and future reference.

Precautions

Please make sure the surface is flat smooth and clean before placing the strip.

NO objects make sure the surface is flat, smooth and clean, before sticking.

Please don't let the led strip on for over 5h when they are used on the plastic side.

Please check the led strip carefully before installation.

Please don't use the led strip on the surface of the car or other vehicles.

The product has got built-in waterproof protection and is resistant to the voltage surges increasing the power supply.

FAQ

1. Can led strip lights stick to any surface?
NO, please make sure the surface is flat, smooth and clean, before sticking.

2. How many times can we use led strip light stick to a new surface?
We recommend sticking led strip light to single surface.

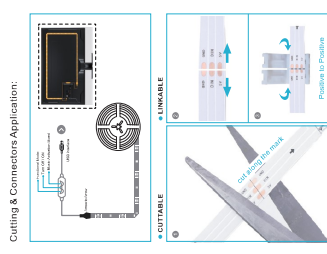
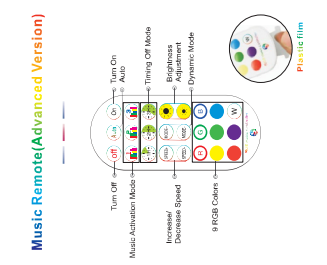
3. No, our light strips are mainly available for indoor environments.
Note that it is customer-driven, they are not waterproof.

4. No, the led strip light and 5V/10k Ohm can not be plugged directly into the mains.
Led strip lights will last up to 40000 hours or around 10 years based on 8 hours a day use of led strip lights?

5. Can you cut led strip lights?
YES, just be sure to cut where clearly marked.



User instruction for led strip light



LED Strip Lights Installation Instructions

1. Prepare all the required accessories before connecting and wiring. If lack something, please make another order of accessories.

2. Tear off the covering of led strip lights.

3. Stick up the adhesive into points where you want to use it.

4. Heat the USB stick into the USB interface and make sure the voltage is 5V. Installation is very simple.

LED Strip Lights DIY

How to cut the LED Strip

1. Please cut the LED strip through the lines marked on it.

2. The 5V low voltage LED strip can be cut in every 1LEDs.

WARNING

DO NOT IMMERSIVE IN FIRE

CHILDREN UNDER THE AGE OF 14 SHOULD NOT USE THIS PRODUCT UNDER ADULT SUPERVISION

CE RoHS RE

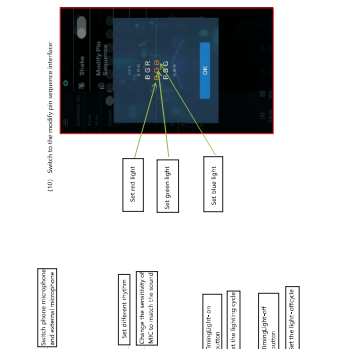
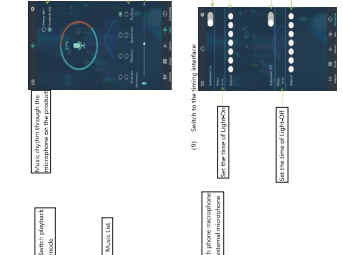
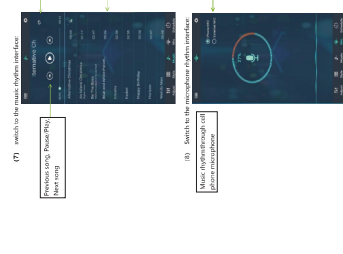
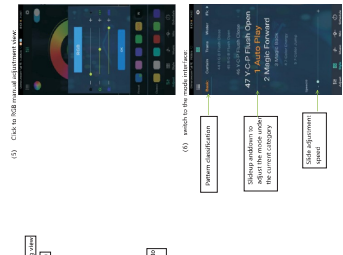
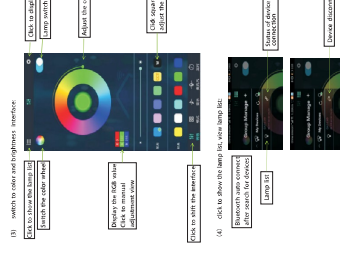
If you have any question after receiving the products, please contact us via email: sales@ledstrip.com

1. Please cut the LED strip through the lines marked on it.

2. The 5V low voltage LED strip can be cut in every 1LEDs.

3. Tear off the covering of led strip lights.

4. Heat the USB stick into the USB interface and make sure the voltage is 5V.



Instructions for use of led controller

1. Please cut the LED strip through the lines marked on it.

2. The 5V low voltage LED strip can be cut in every 1LEDs.

3. Tear off the covering of led strip lights.

4. Heat the USB stick into the USB interface and make sure the voltage is 5V.

5. Installation is very simple.

App operation

Click Colorful Strip on the installation app icon after the app page.

After entering the App interface of Bluetooth is not enabled, an application wants to enable the Bluetooth function of this device click allow.

1. Please cut the LED strip through the lines marked on it.

2. The 5V low voltage LED strip can be cut in every 1LEDs.

3. Tear off the covering of led strip lights.

4. Heat the USB stick into the USB interface and make sure the voltage is 5V.

5. Installation is very simple.

6. After entering the App interface of Bluetooth is not enabled, an application wants to enable the Bluetooth function of this device click allow.

FCC Caution:

This device complies with part 15 of the FCC Rules. Operation is subject to the following two conditions: (1) This device may not cause harmful interference, and (2) this device must accept any interference received, including interference that may cause undesired operation.

Any Changes or modifications not expressly approved by the party responsible for compliance could void the user's authority to operate the equipment.

Note: This equipment has been tested and found to comply with the limits for a Class B digital device, pursuant to part 15 of the FCC Rules. These limits are designed to provide reasonable protection against harmful interference in a residential installation. This equipment generates uses and can radiate radio frequency energy and, if not installed and used in accordance with the instructions, may cause harmful interference to radio communications. However, there is no guarantee that interference will not occur in a particular installation. If this equipment does cause harmful interference to radio or television reception, which can be determined by turning the equipment off and on, the user is encouraged to try to correct the interference by one or more of the following measures:

- Reorient or relocate the receiving antenna.
- Increase the separation between the equipment and receiver.
- Connect the equipment into an outlet on a circuit different from that to which the receiver is connected.
- Consult the dealer or an experienced radio/TV technician for help.

This equipment complies with FCC radiation exposure limits set forth for an uncontrolled environment.