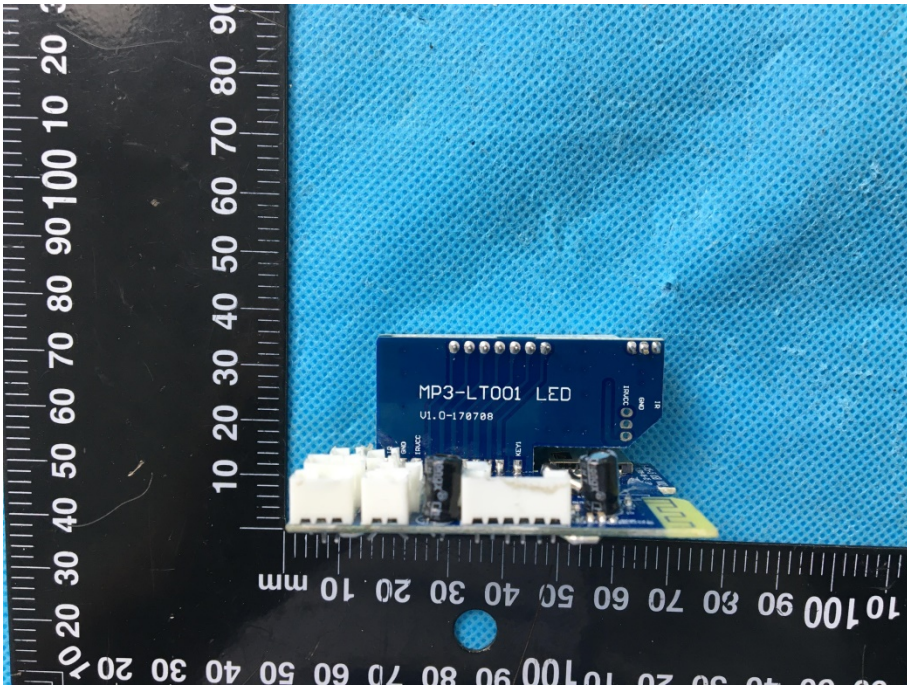
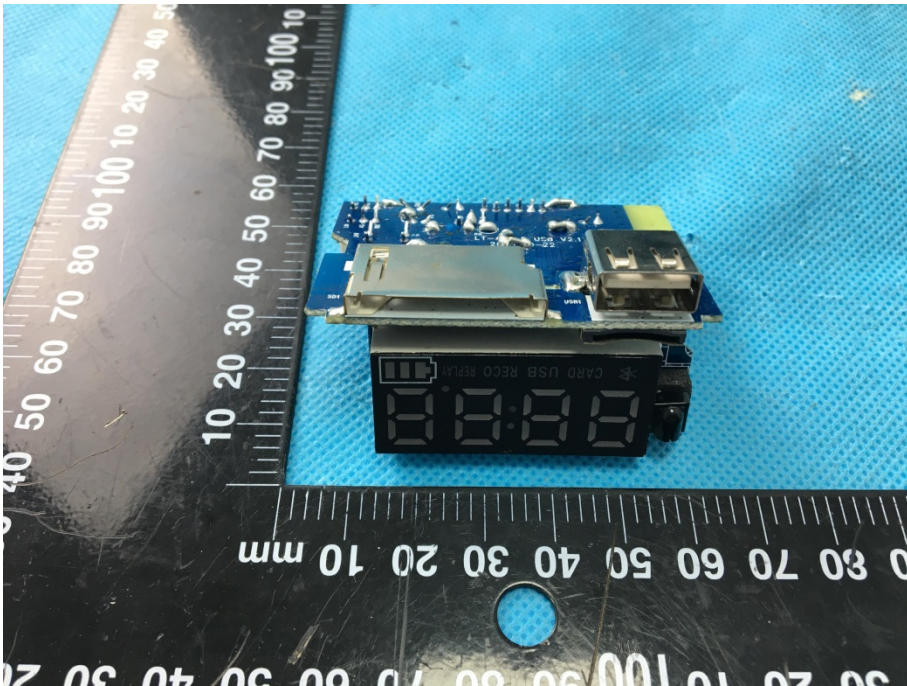
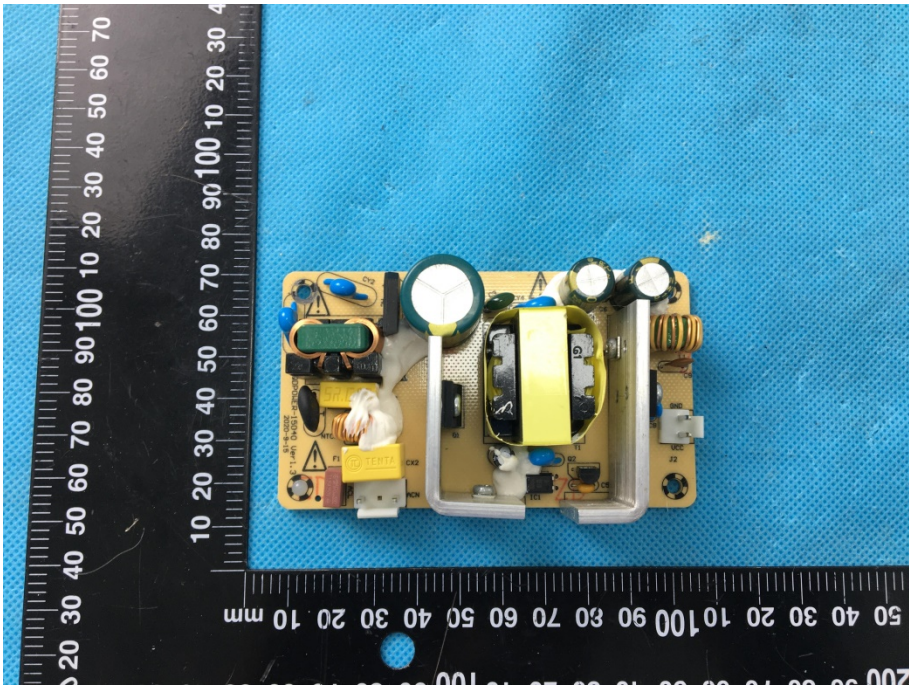
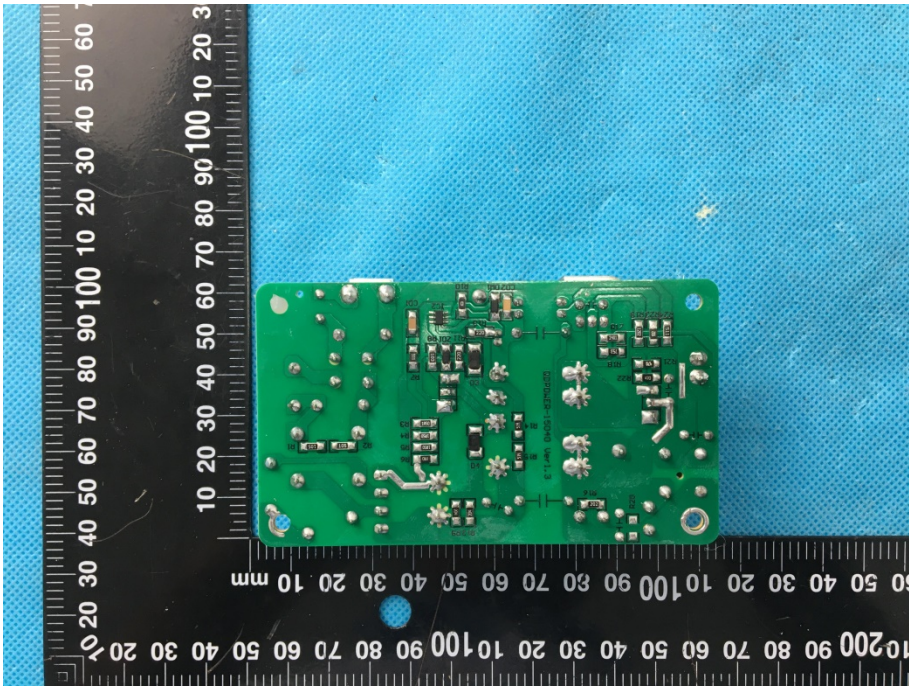
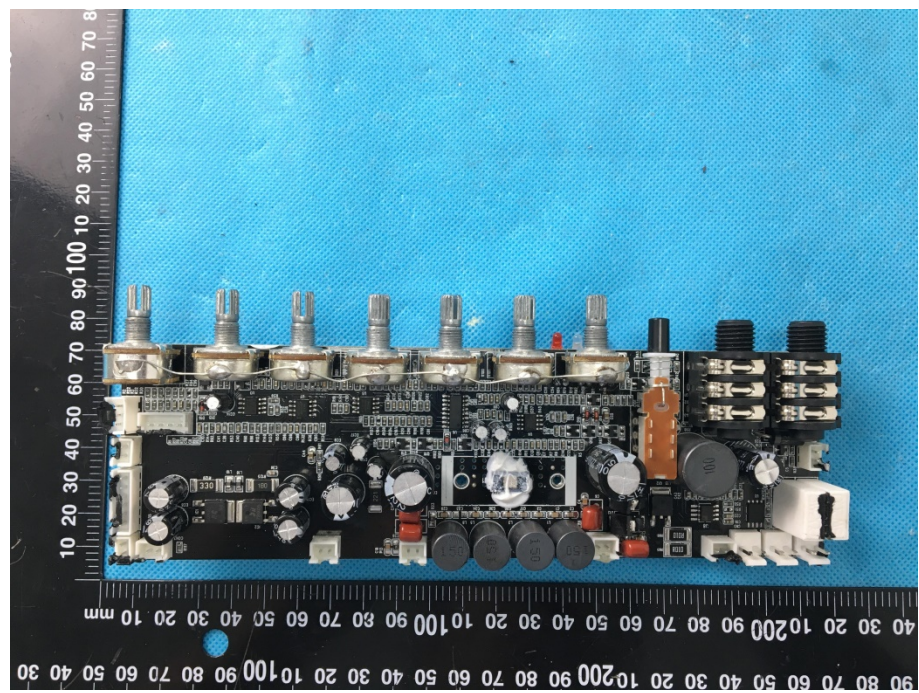


<p style="text-align: center;">Solder Board-Component View 11</p>	 A photograph showing a blue printed circuit board (PCB) component with various electronic components soldered onto it. The component is placed on a black ruler with white markings in millimeters. The ruler is oriented vertically on the left side of the component. The component features a prominent blue integrated circuit (IC) labeled "MP3-LT001 LED" and "U1.0-178798". Other visible components include a white plastic connector, a small black component, and several surface-mount components. The background is a blue textured surface.
<p style="text-align: center;">Solder Board-Component View 12</p>	 A photograph showing a blue PCB component with a digital display and various connectors. The component is placed on a black ruler with white markings in millimeters. The ruler is oriented vertically on the left side of the component. The component features a black digital display with four digits, a USB port, and a card slot. The background is a blue textured surface.

<p style="text-align: center;">Solder Board-Component View 13</p>	 A photograph of a yellow PCB populated with various electronic components, including a large yellow electrolytic capacitor, several resistors, and integrated circuits. A white plastic component is mounted on the board. The board is placed on a blue textured surface next to a black ruler with white markings in millimeters. The ruler shows measurements from 0 to 100 mm.
<p style="text-align: center;">Solder Board-Component View 14</p>	 A photograph of a green PCB with various electronic components, including resistors, capacitors, and integrated circuits, mounted on it. The board is placed on a blue textured surface next to a black ruler with white markings in millimeters. The ruler shows measurements from 0 to 100 mm.

**Solder
Board-Component View
15**



**Solder
Board-Component View
16**

