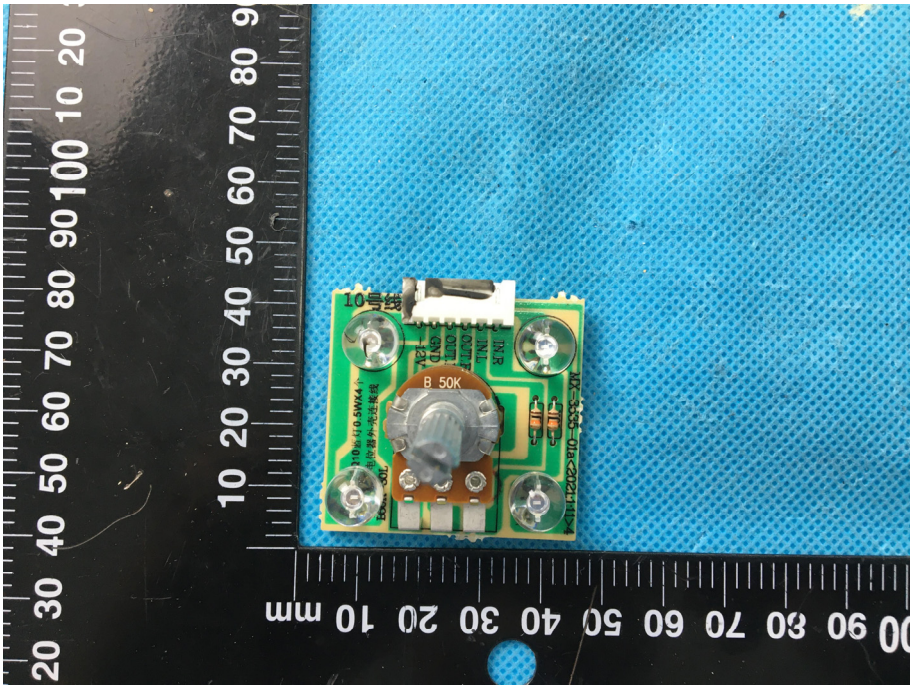
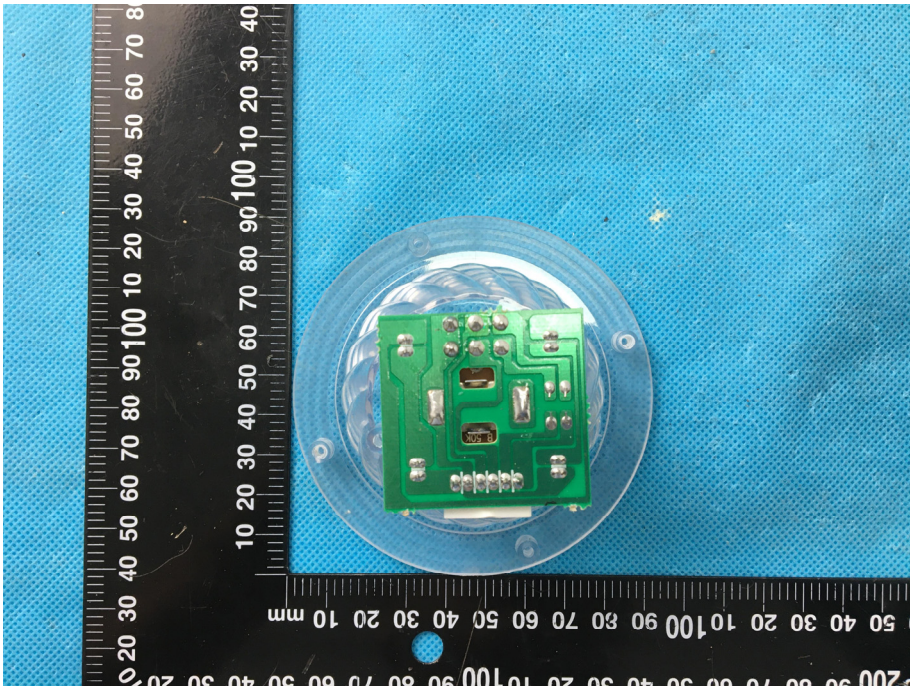
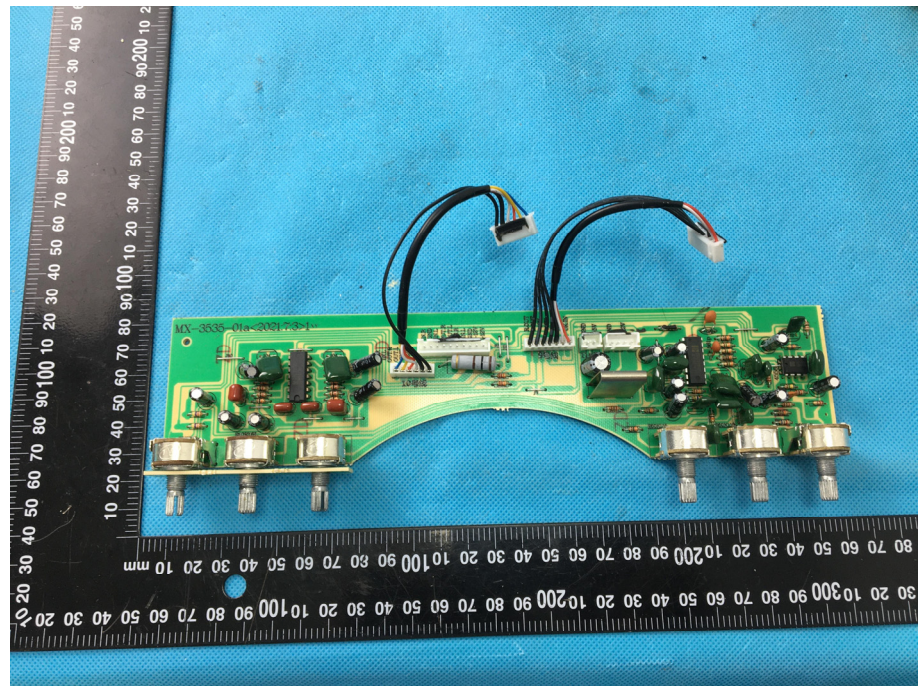
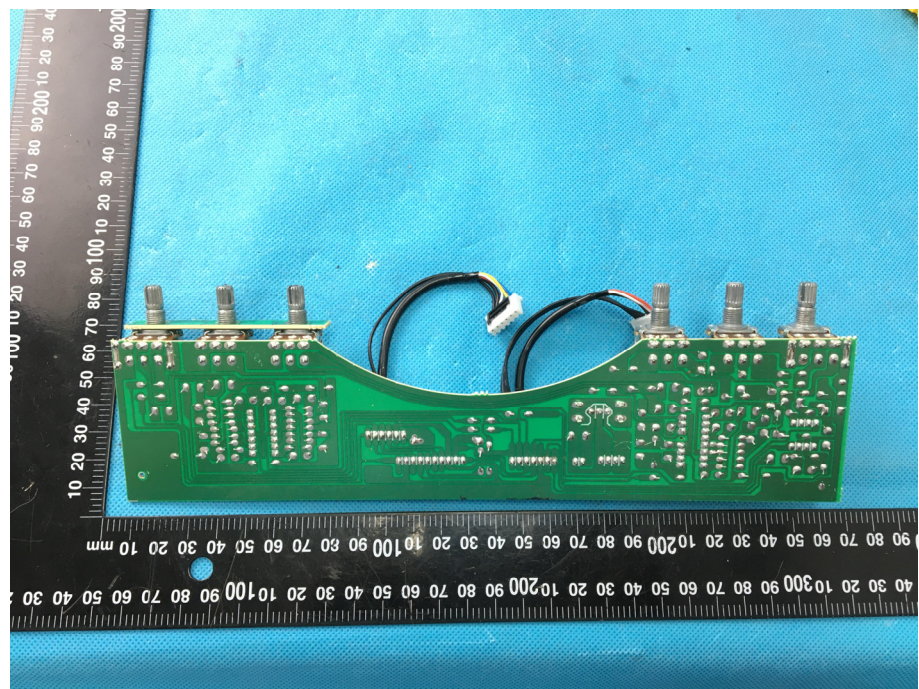


<p style="text-align: center;">Solder Board-Component View 15</p>	 <p>A photograph of a green PCB component, likely a potentiometer or sensor, mounted on a blue textured surface. The component is rectangular and features a central potentiometer with a silver knob. Various electronic components, including resistors and capacitors, are visible on the board. A black ruler is placed to the left of the component for scale, showing markings from 0 to 100 mm. The component is positioned approximately between the 40 mm and 60 mm marks on the ruler.</p>
<p style="text-align: center;">Solder Board-Component View 16</p>	 <p>A photograph of a green PCB component mounted on a circular metal base, likely a potentiometer or sensor. The component is rectangular and features a central potentiometer with a silver knob. Various electronic components, including resistors and capacitors, are visible on the board. A black ruler is placed to the left of the component for scale, showing markings from 0 to 100 mm. The component is positioned approximately between the 40 mm and 60 mm marks on the ruler.</p>

**Solder
Board-Component View
17**



**Solder
Board-Component View
18**



Antenna View

