

# BACK

# FRONT

# INSIDE

2.75"

3.6"

### FCC Caution:

Any Changes or modifications not expressly approved by the party responsible for compliance could void the user's authority to operate the equipment.

This device complies with part 15 of the FCC Rules. Operation is subject to the following two conditions: (1) This device may not cause harmful interference, and (2) this device must accept any interference received, including interference that may cause undesired operation.

### IMPORTANT NOTE:

Note: This equipment has been tested and found to comply with the limits for a Class B digital device, pursuant to part 15 of the FCC Rules. These limits are designed to provide reasonable protection against harmful interference in a residential installation. This equipment generates, uses and can radiate radio frequency energy and, if not installed and used in accordance with the instructions, may cause harmful interference to radio communications. However, there is no guarantee that interference will not occur in a particular installation. If this equipment does cause harmful interference to radio or television reception, which can be determined by turning the equipment off and on, the user is encouraged to try to correct the interference by one or more of the following measures:

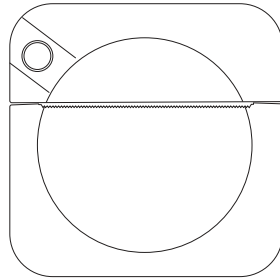
- Reorient or relocate the receiving antenna.
- Increase the separation between the equipment and receiver.
- Connect the equipment into an outlet on a circuit different from that to which the receiver is connected.
- Consult the dealer or an experienced radio/TV technician for help.

### FCC Radiation Exposure Statement:

This equipment complies with FCC radiation exposure limits set forth for an uncontrolled environment.

Distributed By: 1616 Holdings, Inc.  
701 Market Street, Suite 200  
Philadelphia, PA 19106  
MADE IN CHINA

FCC ID :2A3ZO-EQT6-2111174  
AUTHORIZATION NUMBER: FCV2205181C



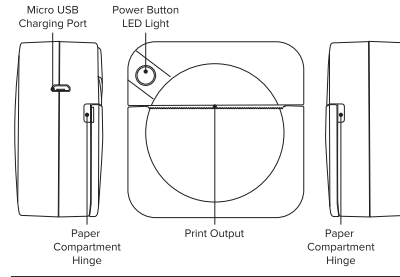
## MINI PORTABLE PRINTER

PORTABLE + FUN

INCLUDES:  
One Mini Portable Printer 3.15 x 3.15 x 1.18 in (80x80x30mm)  
One Photo Paper Roll 2.24x 0.98 in (57mmx29mm), One USB cable

Please read the instructions carefully before using this product.

### PRODUCT OVERVIEW



### INSTRUCTIONS

- To begin first charge the Mini Portable Printer. Use the included Micro USB cable to connect the printer to a computer USB port/AC power adapter with USB to charge. Printing can be done while the printer is charging. Press and hold the power button to turn the device on.
- Go to your Apple store or Google search for the "Fun Print" app. All printing to this printer must be done via the "Fun Print" app. Alternatively, you may scan the QR Code to download the app as well.
- On your device's Bluetooth menu, find and select "MINI PRINTER", and go to the downloaded app to connect to "My Device". Once connected you can start printing.

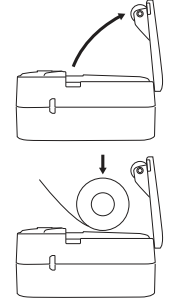


SCAN THE QR CODE  
TO INSTALL THE APP

### HOW TO REPLACE PAPER

The MINI PRINTER uses thermal paper roll to print, the size that must be used with this printer is 2.24" x 0.98" / 57mm x 25mm and the total length cannot exceed 4.5m.

- To remove the used paper roll hold the paper compartment hinge and open the compartment. Replace with a new roll in the direction shown in the illustration. Make sure the paper roll is placed straight in the slot. Then extend the paper out about 0.75"/ 2 cm. Then close the compartment.
- Once the cover securely closed and the printer connected via Bluetooth you can start printing.



### BATTERY WARNING

Do not attempt to disassemble the device. Doing so, may result in an electric shock.  
Do not expose this device to direct sunlight, heat or open flame  
If you see bulging in the battery, stop the use of the battery.

### CAUTION

Be careful with using excessive force in causing damage to the charging port.  
Remove the charging cable whenever you do not need to charge.  
Do not use in high temperatures, or anywhere with excessive smoke or dust.  
Do not touch the printer top when printing to reduce overheating.  
Do not directly touch the sharp paper blade to avoid any injuries.

©2021 MWork Accessories | 1 East 33rd Street, New York, NY 10016 | (212) 889-1012

### PACKAGING TECH PACK

UPC BARCODE <small>(Place copy of UPC here for reference)</small>	BRAND	DEVELOPMENT #	STYLE #	CATEGORY TECH ACCESSORY	PAPER QUALITY	PROP 65 (7pt)  WARNING: Cancer and Reproductive Harm - www.P65Warnings.ca.gov
PACKAGE DIMENSIONS WIDTH: _____ HEIGHT: _____ DEPTH: _____	HANG TAG <input type="checkbox"/>	FILE SAVED ON SERVER <small>(LOCATION OF FILE ON SERVER)</small>	COPY PROVIDED <input type="checkbox"/> PROOF READ <input checked="" type="checkbox"/> MANUAL <input checked="" type="checkbox"/>		SIGNATURE: Conrad Landais DATE: 7-7-22	
PRINTING PROCESS SPOT UV PRINT <input type="checkbox"/> DEBOSS <input type="checkbox"/> METALLIC FOIL <input type="checkbox"/> EMBOSS <input type="checkbox"/>	DIE LINE INSTRUCTION RED LINE = Cut Line BLUE DOTTED LINE = Fold Line ORANGE DOTTED LINE = Placement YELLOW = UV Spot Gloss GREEN = Foiling ORANGE = Embossing GRAY = Debossing BLUE = Glue XXX = XXX		PANTONE COLORS		FILE SAVED AS: A.I. (FULLY EDITABLE) <input type="checkbox"/> A.I. (OUTLINED) <input type="checkbox"/> PDF <input type="checkbox"/>	APPROVAL CHECKLIST: COPY APPROVAL PROOF READ <input checked="" type="checkbox"/> PRIMARY DESIGNER: Conrad Landais DATE: 7-7-22 SECONDARY DESIGNER: _____ DATE: _____
AUTHORIZATION SIGNATURES:			C.E.O. _____ DIRECTOR _____ DATE: _____ DATE: _____			