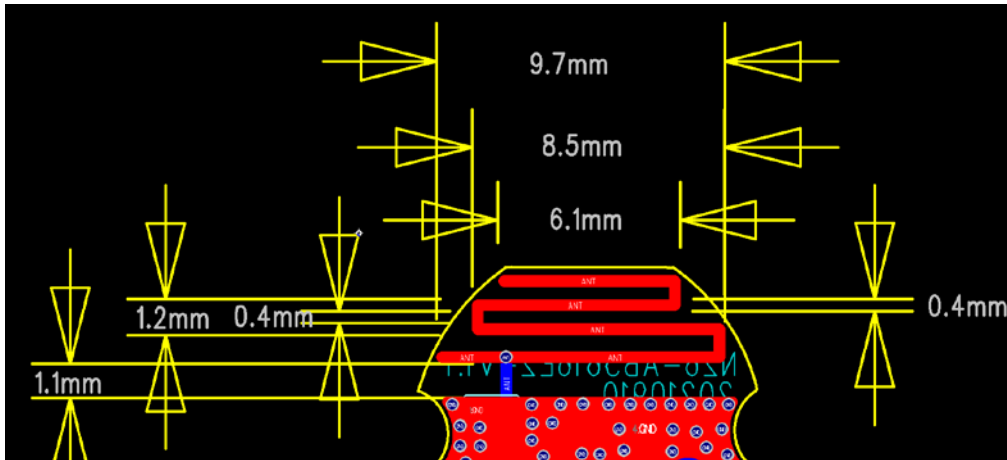


深圳市天线与电波重点实验室

广东省深圳市南山区粤海街道深圳大学粤海校区
电子与信息工程学院致信楼

ITEM	ANT SPEC					
Model Name	2.4G ANT					
Center Frequency	Horizontal			Vertical		
	2402MHz	2450MHz	2480MHz	2402MHz	2450MHz	2480MHz
	-4.91	-2.90	-4.22	-7.38	-5.3	-6.32
MAX. Gain	-2.90					
Polarization	Horizontal and Vertical					
Azimuth Beam Pattern	Omni-directional					
Impedance	8.45-j22.5					
Antenna Length	35mm					
Manufacture	Shenzhen Huilan Electronics Co., LTD					
Test Lab.	Shenzhen Key Laboratory of Antennas and Propagation					
Lab Address	N405, Zhixin Building, College of Electronics and Information Engineering, Yuehai Campus, Shenzhen University, Yuehai Sub-district, Nanshan District, Shenzhen, China					

Antenna module & Size



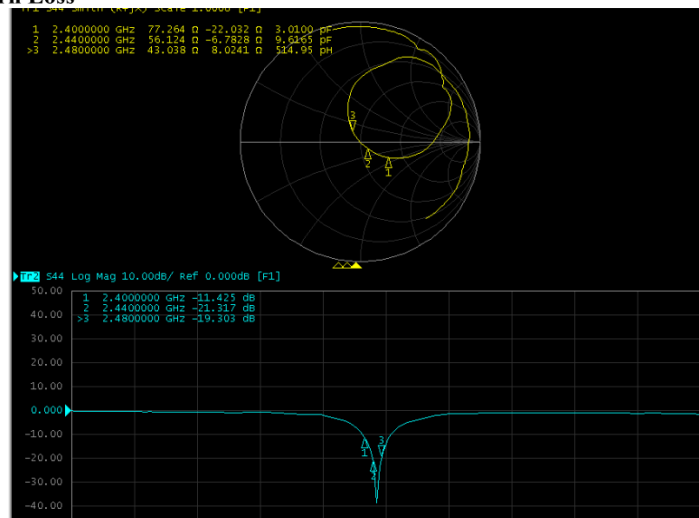
Horizontal: 2400 MHz 2450 MHz 2500 MHz

Power (dBm)

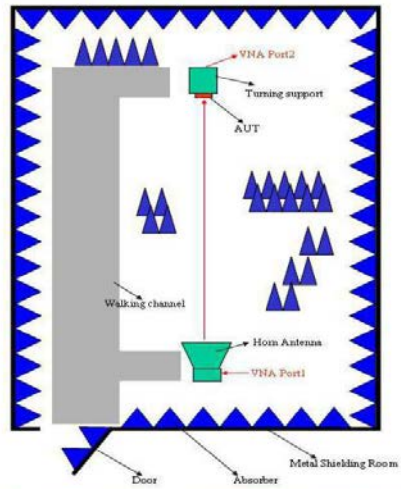
Max: 0 Min: -40 Scale: 5/div

Frequency (MHz)	Gain(dB)		
	Max	Min	Avg
2402	-4.9	-8.1	
2450	-2.9	-7.6	
2480	-4.2	-7.8	

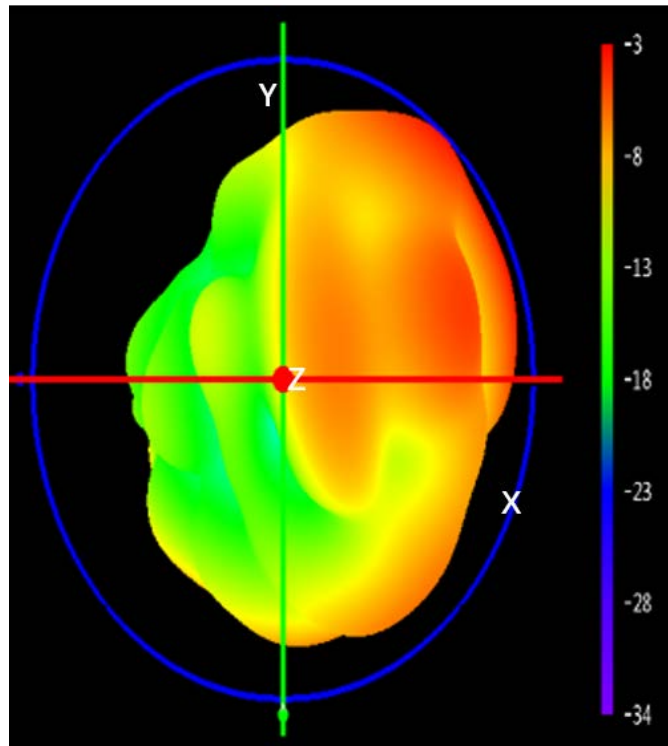
Return Loss



The Environment of Antenna Radiation Pattern

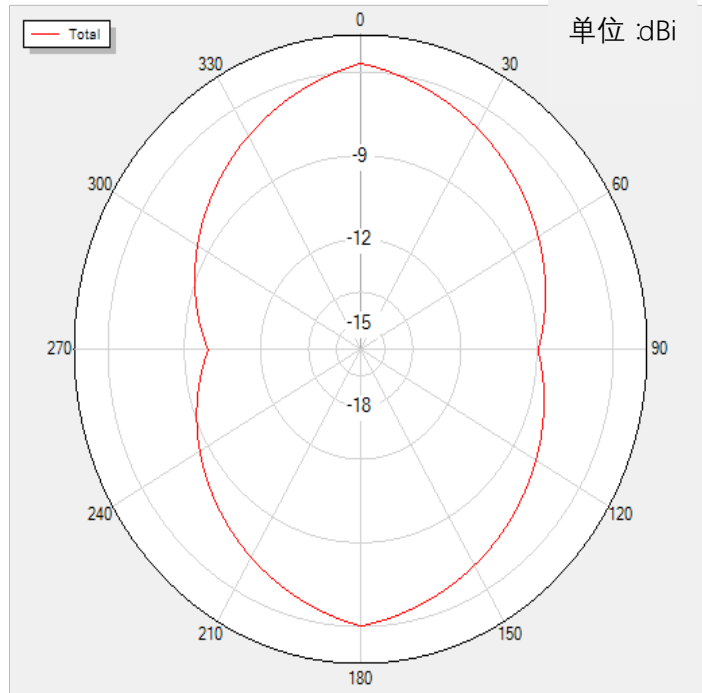


3D radiation pattern diagram(2450MHz)



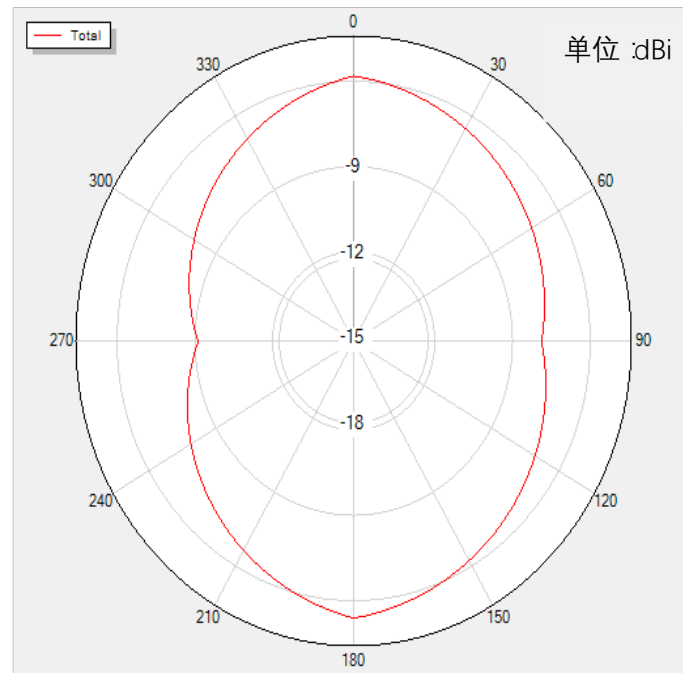
2450MHz XY-plane

BLUETOOTH_Trp_H1 Total



2450MHz XZ-plane

BLUETOOTH_Trp_H78 Total



2450MHz YZ-plane

BLUETOOTH_Trp_H37 Total

