

## 2.44GHz PCB Antenna: 3216板载双极回型天线

---

※Bluetooth Home RF

※ISM band 2.4GHz applications

### Electrical Specification

number	Item	Specifications
1	Working Central Frequency	2441 MHz
2	Band Width	(2402-2480)MHz
3	Gain	0dBi
4	VSWR	≤2.0
5	Antenna type	PCB antenna
6	Azimuth Beam width	Omni - directional
7	Impedance	50 Ω
8	Modulation mode	GFSK

### Manufacture And Tester

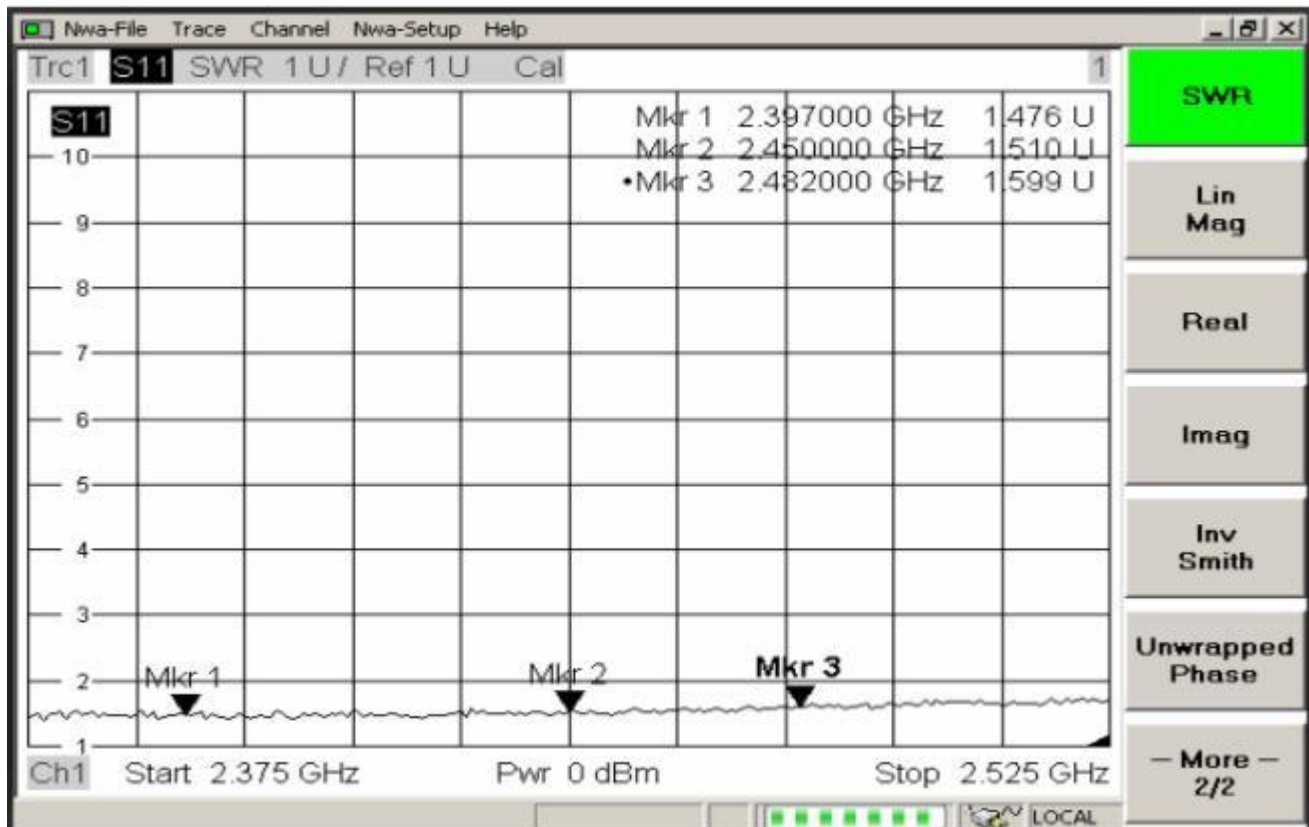
Manufacture	DONGGUAN ZHENGHEZHIXING TECHNOLOGY CO., LTD.
ANT Test Labs	SHENZHEN HIICOMM INNOVATIONS TECHNOLOGY CO.,LTD

## 2.44GHz PCB Antenna: 3216板载双极回型天线

### 3. simulation parameter

#### ① VSWR

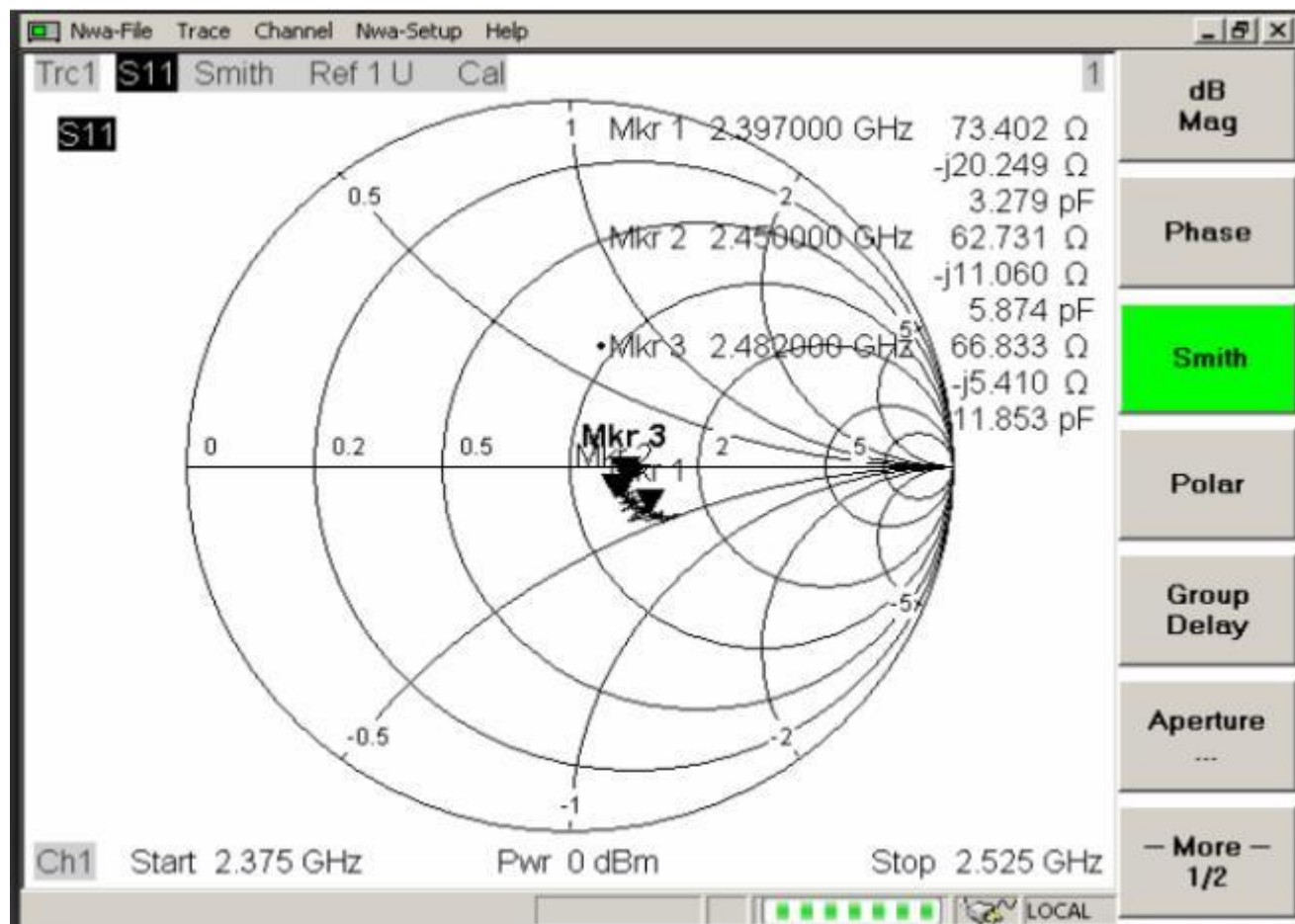
Mkr1: 2397MHz 1.47    Mkr2: 2450MHz 1.51    Mkr3: 2482 MHz 1.59



## 2.44GHz PCB Antenna: 3216板载双极回型天线

### ②Smith Char

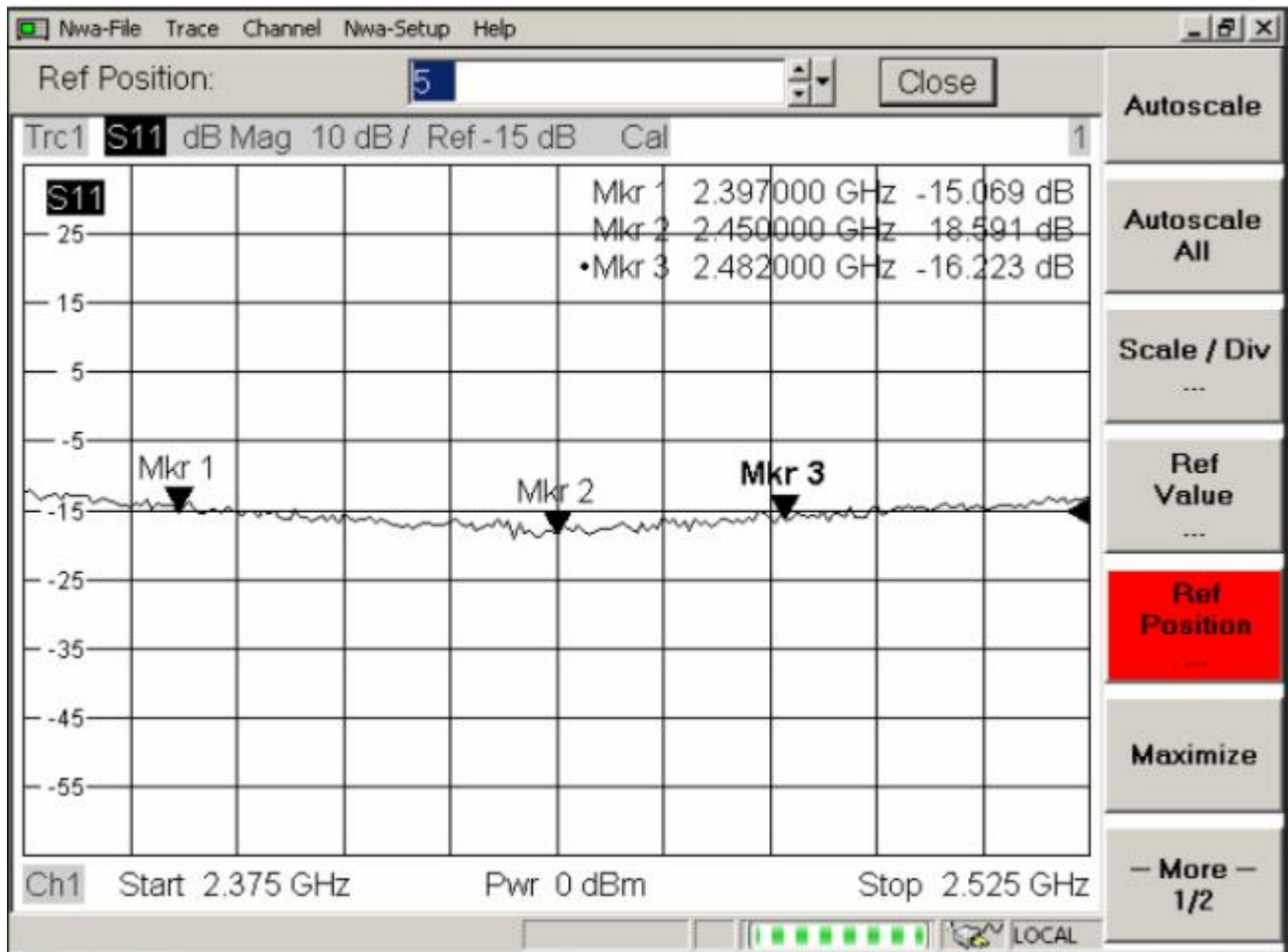
Mkr1: 2397MHz 73.4    Mkr2: 2450MHz 62.7    Mkr3: 2482 MHz 66.8



## 2.44GHz PCB Antenna: 3216板载双极回型天线

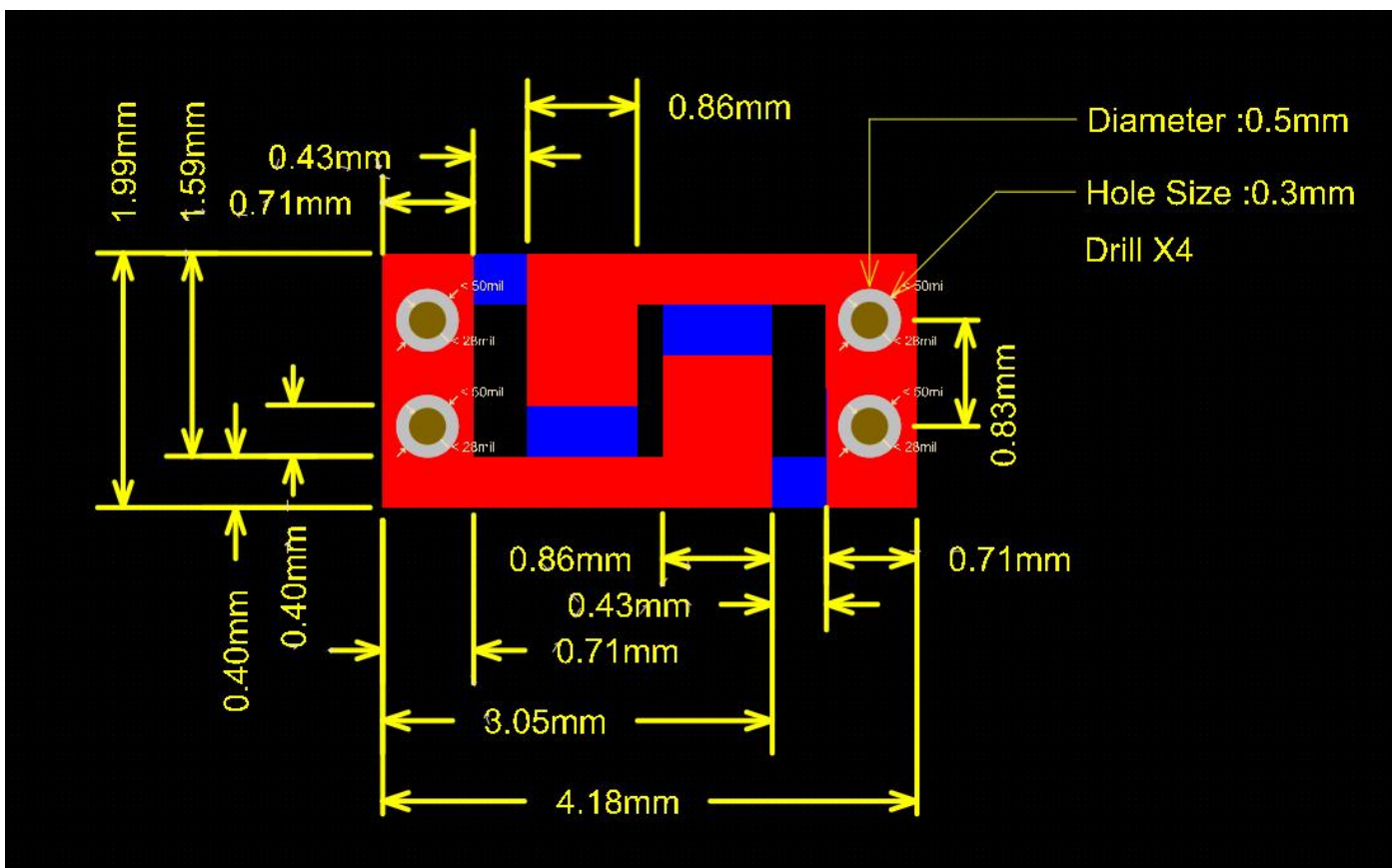
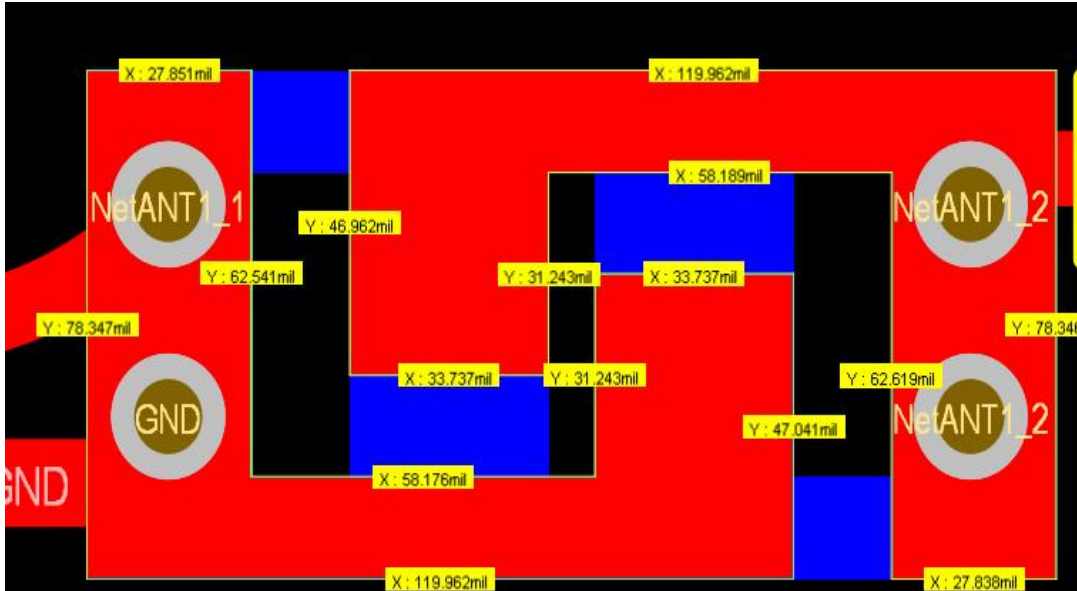
### ③Return Loss

Mkr1: 2397MHz -15    Mkr2: 2450MHz -18    Mkr3: 2482 MHz -16



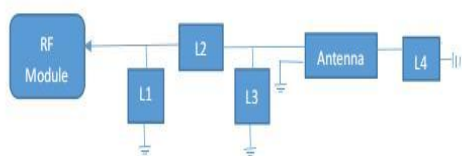
## 2.44GHz PCB Antenna: 3216板载双极回型天线

### Dimension and Terminal Configuration



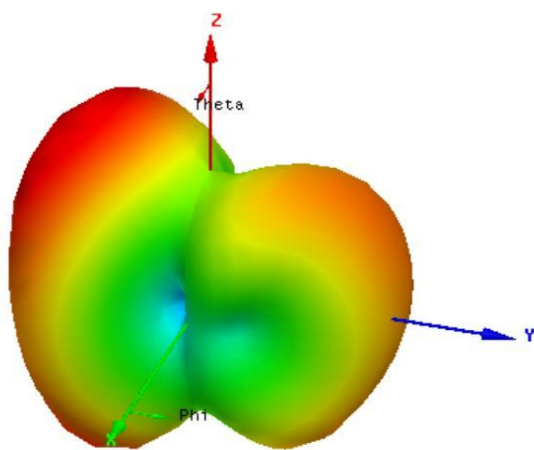
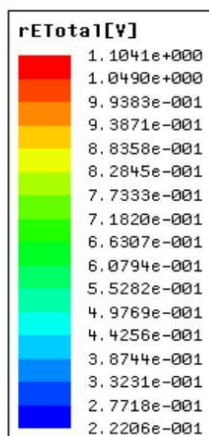
## 2.44GHz PCB Antenna: 3216板载双极回型天线

### Antenna parameters and 3D Radiation pattern



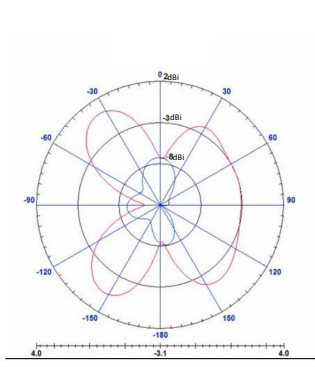
天线	
BLement	Value-A
L1	1.2PF
L2	0R
L3	NC
L4	2.2NH

#### 3D Radiation pattern

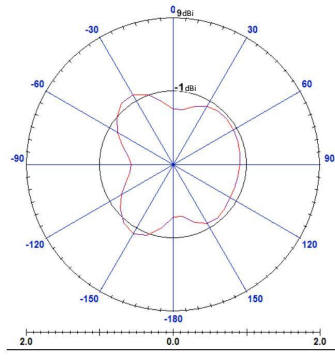


4. Radiation Patterns

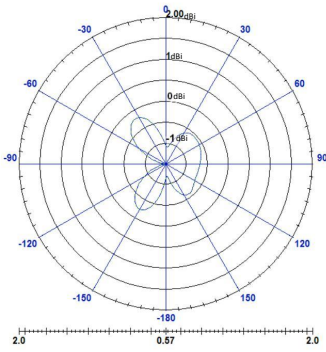
2450MHz XY-plane Max Gain 0dbi



2450MHz XZ-plane Max Gain -0.13dbi



2450MHz YZ-plane Max Gain -0.39dbi



## Taping Specifications

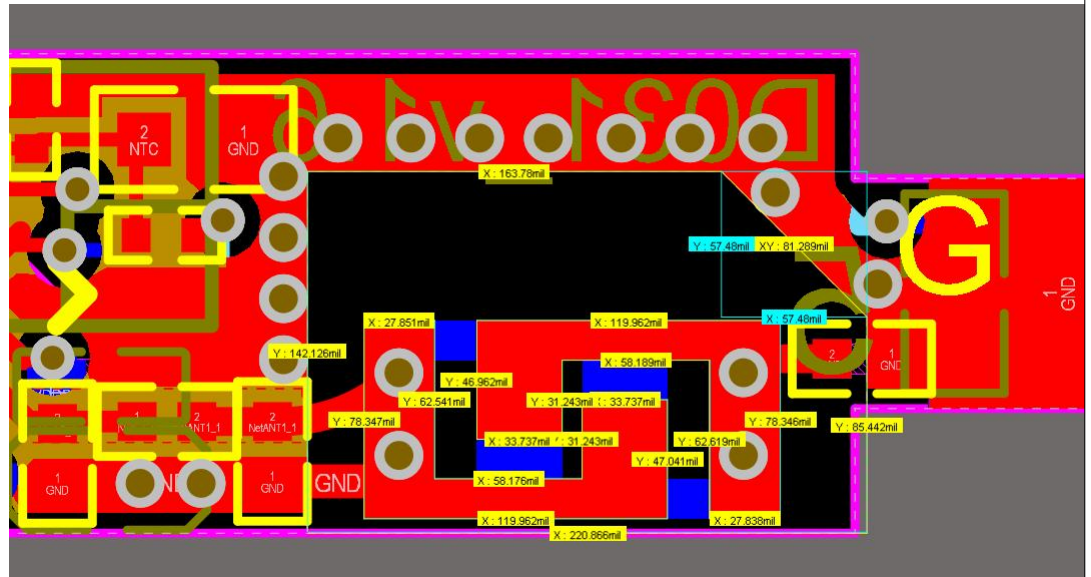
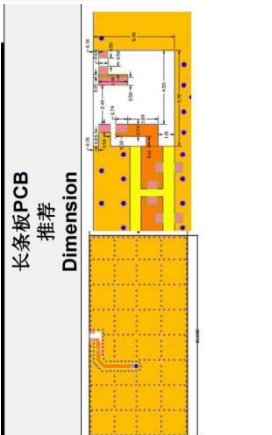
### Reel and Taping Specification

Antenna clearance

area :

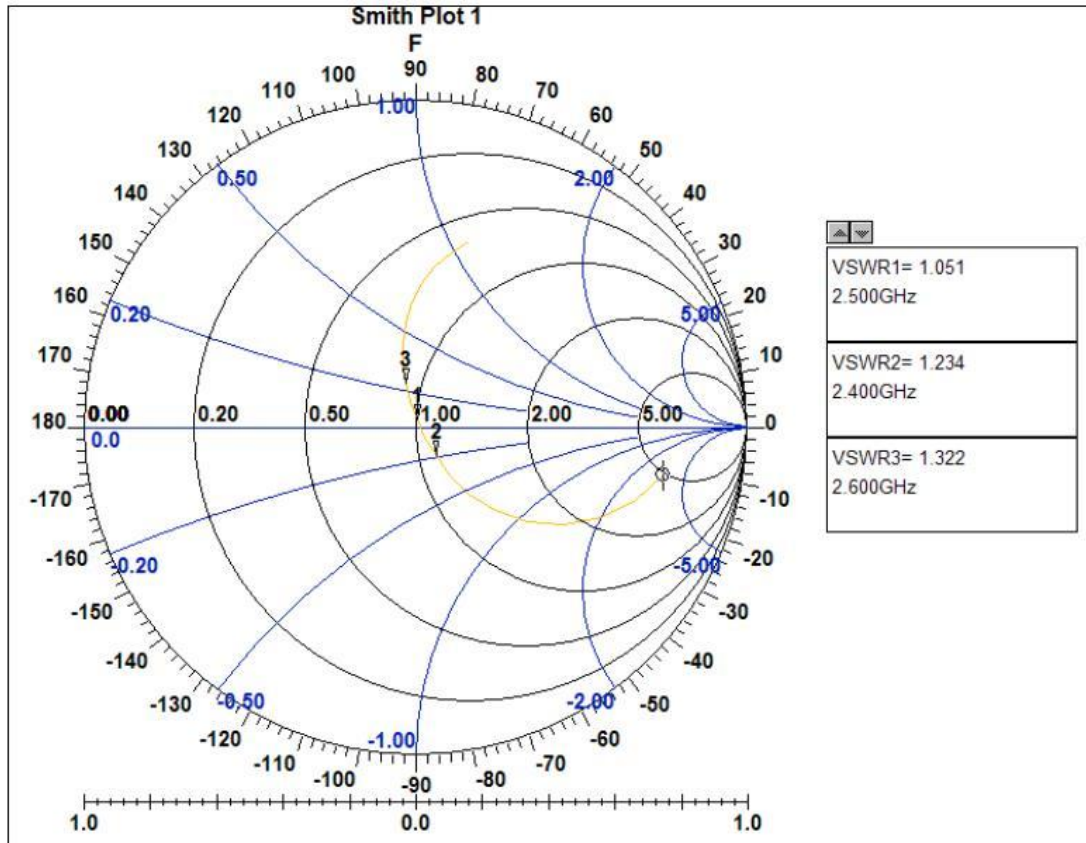
142\*163\*82\*85\*220

( mil )



#### ④ Smith Char

Mkr1: 2400MHz 1.234    Mkr2: 2500MHz 1.051    Mkr3: 2600MHz 1.322

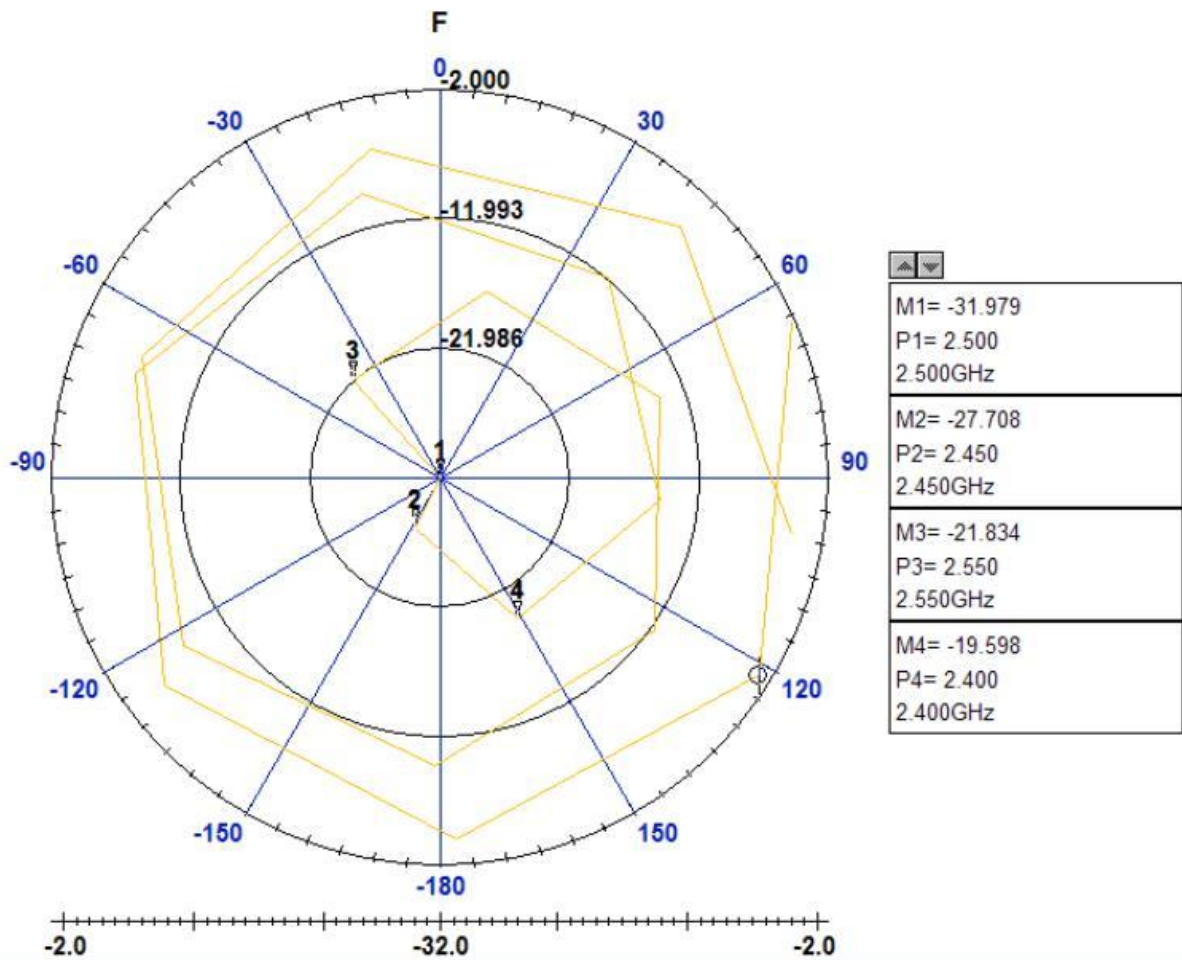




## ⑤Return Loss

Mkr1: 2400MHz -19.59 Mkr2: 2450MHz -27.70 Mkr3: 2500MHz -31.97

Mkr4: 2450MHz -21.83



## ⑥Phase

Mkr1: 2400MHz -54.89    Mkr2: 2500MHz -82.03    Mkr3: 2600MHz -102.6

