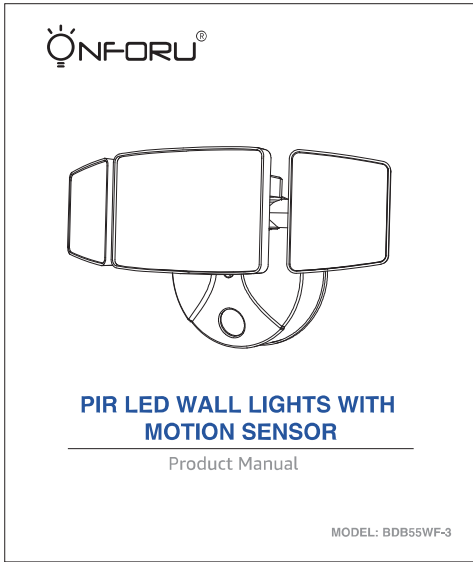


SKU	
型号+产品名称+文件名称	B55常规WiFi壁灯 说明书 ONFORU
尺寸(长x宽x高)mm	展开尺寸: 440 X 260mm 折后尺寸110 X 130mm
材质	105G铜版纸 四色双面印刷 风琴折 (先横向, 再纵向, logo朝外)
料号	PSBD0CWF001Z01
版本号	Z01

包装	电子	结构	确认人	审核人
林利诚				
日期: 2023.3.27	日期:	日期:	日期:	日期:



### COMPONENTS AND STRUCTURE

**BDB55WF-3**

1. Cover  
2. LED Light Source  
3. Lamp Base

### PARTS LIST

<b>1</b> Machine Screw QTY: 3	<b>1</b> Expansion Rubber Plug QTY: 3	<b>1</b> EVA Gasket QTY: 1	<b>1</b> Mounting Bracket QTY: 1
<b>1</b> Wire Nut QTY: 3	<b>1</b> Long Machine Screw QTY: 1	<b>1</b> Silicone Gasket QTY: 1	<b>1</b> Machine Screw QTY: 2
<b>1</b> Machine Screw QTY: 2			

2

### SPECIFICATIONS

LED WALL LAMP	
Model	BDB55WF-3
Input Voltage	100-120V ~ 60Hz
Input Current	0.7A
Rated Power	55W
Luminous Flux	550lm
CCT	2700-6500K
CRI	≥80
Power Factor	≥0.9
L70B50 Lifetime	30000hours L70B50 @ 25°
Beam Angle	120°
θa	-20~40°C/4°F~104°F
Luminaire Location	SUITABLE FOR WET LOCATIONS
DIMENSIONS	
Model	BDB55WF-3
Dimensions (LxHxW)	272x123x121mm 10.71x4.84x4.75 in
Weight	0.3kg/1.99 lb
Max Projected Area	0.8214m²/0.23ft²
Max. Lighting Coverage	90m²/968ft²
<b>Note:</b> The testing standard of the product's luminous flux. Place the three two lights on the same horizontal surface for testing, and the tested luminous flux is the accurate luminous flux.	

3

### PAIRING LED LIGHT WITH "Onforu" APP

**Step 1: 'Onforu Home' App Download.**  
There are 2 options for obtaining and downloading the "Onforu Home" App on your smart device.  
1. Scan the QR code on the right.  
2. Search for "Onforu Home" in the App Store or Google Play.

**Step 2: Enter the "Onforu Home" App.** Register an account and log in. If you already have an account for Onforu Home App, Please select "Log in with existing account".  
**Note:** You will need your "Onforu Home" App username and password to pair with Amazon Alexa and/or Google Assistant.

**Step 3: Please turn on the Wi-Fi and Bluetooth on your phone before connecting LED lights to the "Onforu Home" App.**

4

**Step 4: How to pair the LED Light**  
Set the light to the pending pairing state.  
1. Power on the LED Light.  
2. Turn the light on and off 3 times until it starts flashing, indicating that the light is ready for pairing.

#### Method 1

1. Tap "+" button on top right corner and tap "Add Device" to add device.
2. The app will automatically search for the device. After discovering the device, tap "Add".
3. Enter Wi-Fi password to join your network.  
**Please Note:**  
a. This smart LED Light can only support 2.4 GHz network and cannot work with 5.0 GHz network.  
b. Please check if your home network is 2.4 GHz and make sure that your phone has been connected to your Wi-Fi network.  
**Please ensure your network is not hidden.**

5

4. Wait for the device to register (about 30-60s).
5. Tap "Next" to complete the light pairing.
6. You can tap "Z" to change the device name.
7. Tap "Done" to enter the control panel.

6

#### Method 2

1. Tap "+" button on top right corner and tap "Add Device" to add device.
2. Tap "Lighting" and then tap "Light Source" to enter next page.
3. Tap the "Next" button to pair the LED Light.
4. Enter Wi-Fi password to join your network.  
**Please Note:**  
a. This smart LED Light can only support 2.4 GHz network and cannot work with 5.0 GHz network.  
b. Please check if your home network is 2.4 GHz and make sure that your phone has been connected to your Wi-Fi network.  
**Please ensure your network is not hidden.**
5. Wait for the device to register (about 30-60s).

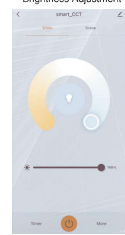
7

6. Tap "Next" to complete the light pairing.
7. You can tap "Z" to change the device name.
8. Tap "Done" to enter the control panel.

8

## HOW TO OPERATE THE APP

### 1. Color Temperature and Brightness Adjustment

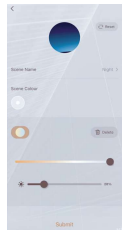


### 2. Scene choose



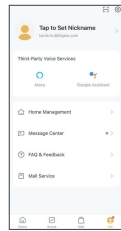
### 3. Scene Edit

You can edit the scene name and adjust the color temperature and brightness.



9

## HOW TO CONNECT WITH ALEXA AND GOOGLE ASSISTANT APP



Tap "Me", find the third-party voice device you want to connect to and tap it, then follow the steps to connect.

10

## PREPARATION

### NOTE:

Before beginning assembly of product, make sure all parts are present. Compare parts with parts list, if any part is missing or damaged, do not attempt to assemble the product. Estimated Assembly Time: 30-60 minutes.

Recommended to be installed 2.5m (8.2ft) above the ground but not higher than 5m (16.4ft).

Product appearance may vary from image shown.

### TOOLS REQUIRED (not included)



### WARNING:

**THIS PRODUCT MUST BE INSTALLED IN ACCORDANCE WITH THE APPLICABLE INSTALLATION CODE BY A PERSON FAMILIAR WITH THE CONSTRUCTION AND OPERATION OF THE PRODUCT AND THE HAZARDS INVOLVED.**

### CAUTION:

**PLEASE MAKE SURE YOUR WALL SWITCH AND POWER AT MAIN CIRCUIT BREAKER BOTH ARE OFF.**

**IF IN DOUBT ABOUT ELECTRICAL INSTALLATION, CONSULT A LICENSED ELECTRICIAN.**

11

## PREPARATION

### RISK OF SHOCK:

**BEFORE BEGINNING INSTALLATION, TURN OFF ELECTRICITY AT THE CIRCUIT BREAKER BOX OR THE MAIN FUSE BOX.**

### NOTE:

**BE SURE TO USE WIRE NUTS/CONNECTORS RATED FOR THE CORRECT GAUGE AND NUMBER OF WIRES USED.**

**MAKE SURE THERE ARE NO EXPOSED WIRE BUNDLES OUTSIDE THE WIRE NUT/CONNECTOR (IF APPLICABLE).**

**BE CAREFUL NOT TO DAMAGE OR CUT THE WIRE INSULATION (COVERING) DURING INSTALLATION. DO NOT LET THE WIRES TOUCH ANY SHARP EDGES.**

### WARNING:

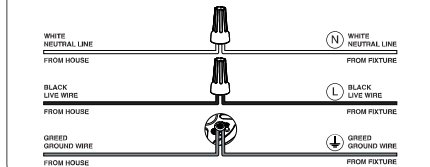
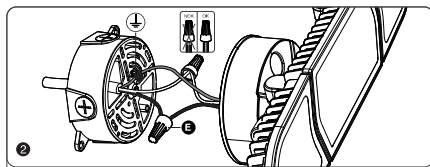
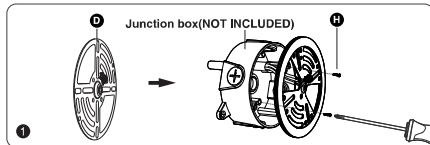
**DO NOT CONNECT THIS LIGHT FIXTURE TO AN UNGROUNDED ELECTRICAL SYSTEM. ATTACH GROUND FIXTURE WIRE TO EITHER GREEN GROUND SCREW ON MOUNTING PLATE OR THE GROUND WIRE IN THE OUTLET BOX.**

**INSTALLING THIS LIGHT IN AN UNGROUNDED ELECTRICAL SYSTEM MAY CAUSE THE METAL PARTS OF THE LIGHT TO CARRY CURRENT IF ANY WIRES OR WIRE CONNECTIONS ARE DAMAGED OR LOOSE. IN THIS CASE, ANYONE WHO TOUCHES THE LIGHT WILL RECEIVE AN ELECTRIC SHOCK, RESULTING IN INJURY OR DEATH.**

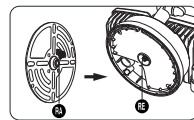
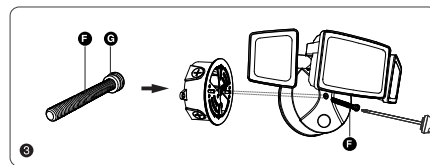
12

## INSTALLATION STEPS

FOR WET LOCATION, MAKE SURE FILL FULL THE GAP OF EVA GASKET AND MOUNTING SURFACE WITH SEALING COMPOUND OR SILICONE GLUE.



13



Note:  
The raised part (RA) of the metal plate must be engaged with the recessed part (RE) of the base, otherwise it cannot be installed.

14

## FCC ID: 2A3W8BDB55WFC-3

### FCC Warning:

Any Changes or modifications not expressly approved by the party responsible for compliance could void the user's authority to operate the equipment. This device complies with part 15 of the FCC Rules. Operation is subject to the following two conditions:

- (1) This device may not cause harmful interference, and
- (2) this device must accept any interference received, including interference that may cause undesired operation.

Note: This equipment has been tested and found to comply with the limits for a Class B digital device, pursuant to part 15 of the FCC Rules. These limits are designed to provide reasonable protection against harmful interference in a residential installation. This equipment generates uses and can radiate radio frequency energy and, if not installed and used in accordance with the instructions, may cause harmful interference to radio communications. However, there is no guarantee that interference will not occur in a particular installation. If this equipment does cause harmful interference to radio or television reception, which can be determined by turning the equipment off and on, the user is encouraged to try to correct the interference by one or more of the following measures:

- Reorient or relocate the receiving antenna.
- Increase the separation between the equipment and receiver.
- Connect the equipment into an outlet on a circuit different from that to which the receiver is connected.
- Consult the dealer or an experienced radio/TV technician for help.

This equipment complies with FCC radiation exposure limits set forth for an uncontrolled environment. This equipment should be installed and operated with minimum distance 20cm between the radiator & your body.

15

HK Bright International Lighting Co., Limited  
Unit 616, 6/F., Kam Teem Industrial Building, 135  
Connaught Road West, Sai Wan Hong Kong  
Manufacturer/Hersteller: MDH LIGHTING LTD  
Suite 302, 292 Strovolos Avenue, 2048 Strovolos Nicosia,  
Cyprus

UK Importer: MDH LIGHTING LTD  
89 Abarddeen Avenue, Cambridge CB2 8DL,  
United Kingdom

Made in China

support@onforuled.com onforuleds.com

