

SPECIFICATION

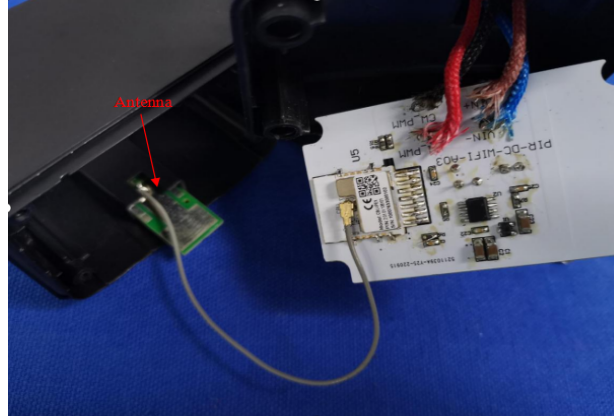
Shenzhen Guandetong Electronic Limited

Antenna test report

Content

cover.....	1
catalogue.....	2
一、 Product pictures.....	3
二、 Product parameters.....	3
三、 S11 data.....	4
四、 Antenna Dimension.....	5
五、 Radiation Pattern.....	6

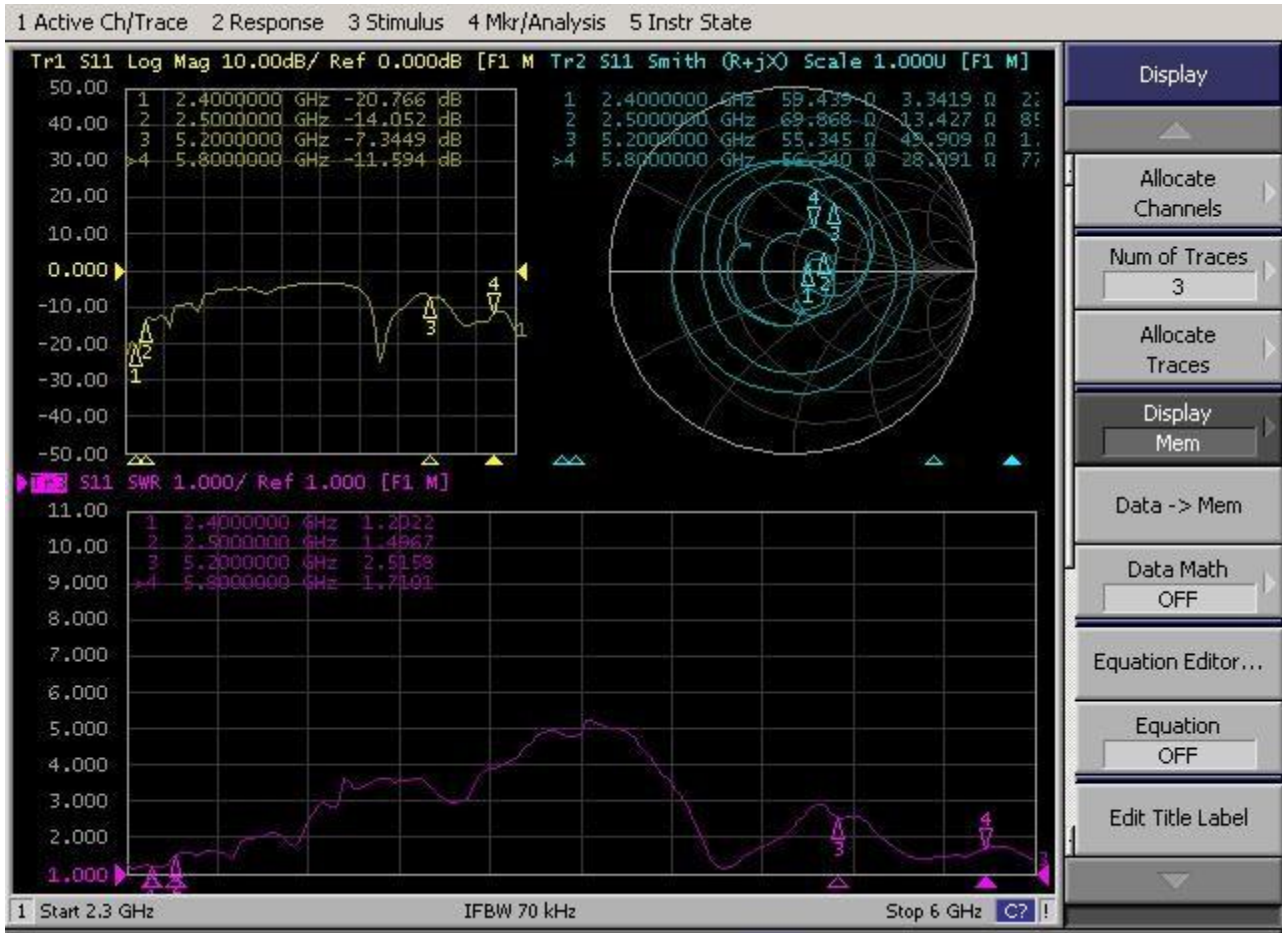
一、Product pictures



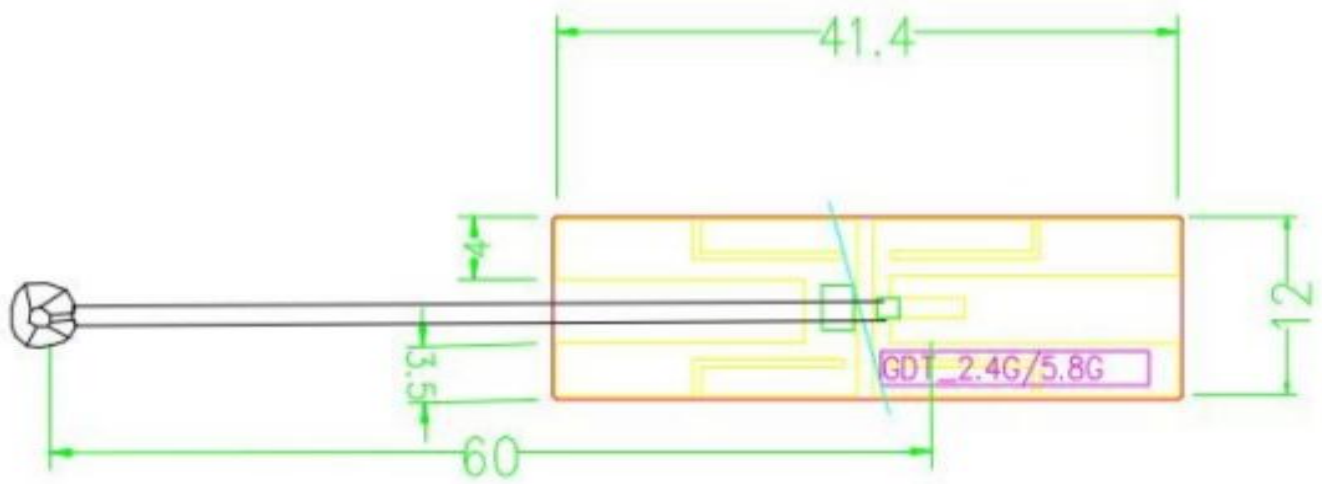
二、Product parameters

Product parameters			
Name	FPC Antenna	Model Type	GDT-2PWIFI-001
Electrical Specifications			
Frequency Range	2400-2500MHz 5200-5800MHz	Polarization	perpendicular
Impedance	50 Ω	Radiation direction	omnidirectional
VSWR	≦ 2	Power	50W
Gain	3dBi	Bandwidth	100/600MHz
Mechanical Specifications			
Dimensions	41.40*12 ± 1mm	Chassis Color	black
Connector	IPEX	Cable Length	60MM
Chassis Material	FPC		
Working Temperature	-40℃--+85℃	Limit Temperature	-40℃--+85℃

三、S11 (VSWR 、 Return loss 、 Smith)



四、Antenna Dimension



五、Radiation Pattern

