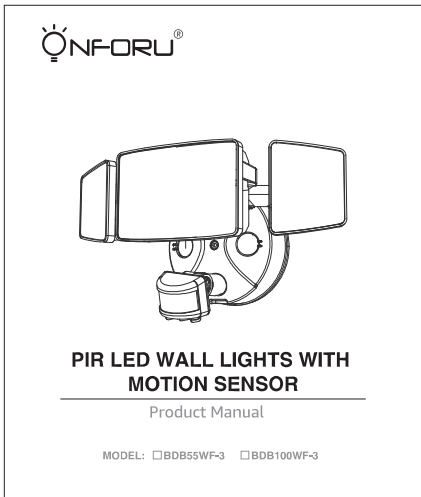


SKU	ON-B55-BD61-DW-US-HS ON-B55-BD61-DW-US-BS	ON-B55-BD61-DW-US-HS-2 ON-B55-BD61-DW-US-BS-2	ON-B100-BD73-DW-US-HS ON-B100-BD73-DW-US-BS
型号+产品名称+文件名称	BDB55WF-3 & BDB100WF-3 智能壁灯 说明书 ONFORU		
尺寸(长x宽x高)mm	展开尺寸: 550 X 260mm 折后尺寸110 X 130mm		
材质	105G铜版纸 四色双面印刷 风琴折		
料号	PSBD0GF002Z02		
版本号	Z02 (增加BDB100WF-3型号)		

包装	电子	结构	确认人	审核人
林利诚				
日期: 2023.3.23	日期:	日期:	日期:	日期:



### COMPONENTS AND STRUCTURE

**BDB55WF-3**

**BDB100WF-3**

1. Cover  
2. LED Light Source  
3. Lamp Base  
4. Motion Sensor

### PARTS LIST

Machine Screw QTY:3	Expansion Rubber Plug QTY:1	EVA Gasket QTY:1	Mounting Bracket QTY:1
Wiring Nips QTY:3	Long Machine Screw QTY:1	Silicone Gasket QTY:1	Mounting Screw QTY:3
Machine Screw QTY:2			

### SPECIFICATIONS

LED WALL LAMP		
Model	BDB55WF-3	BDB100WF-3
Input Voltage	100-120V ~ 60Hz	
Input Current	0.7A	1.2A
Rated Power	55W	100W
Luminous Flux	5500lm	9000lm
CCT	2700-6500K	
CRI	≥80	
Power Factor	≥0.9	
Ly/Ly0 Lifetime	30000hours Ly/Ly0 @ 25°	
Beam Angle	120°	
θ <sub>1/2</sub>	~20-40°C ~41°-104°F	
Luminaire Location	SUITABLE FOR WET LOCATIONS	
DIMENSIONS		
Model	BDB55WF-3	BDB100WF-3
Dimensions (LxHxW)	272x123x112 mm / 10.71x4.84x4.76 in	389x208x120 mm / 15.31x8.19x4.72 in
Weight	0.9kg/1.98 lb	1.92 kg/2.25 lb

Note: The testing standard of the product's luminous flux. Place the three lights on the same horizontal surface for testing, and the tested luminous flux is the accurate luminous flux.

### PAIRING LED LIGHT WITH "Onforu" APP

**Step 1: "Onforu Home" App Download.**  
There are 2 options for obtaining and downloading the "Onforu Home" App on your smart device.  
1. Scan the QR code on the right.  
2. Search for "Onforu Home" in the App Store or Google Play.

**Step 2: Enter the "Onforu Home" App.** Register an account and log in. If you already have an account for Onforu Home App, please select "Log In with existing account".  
Note: You will need your "Onforu Home" App username and password to pair with Amazon Alexa and/or Google Assistant.

**Step 3: Please turn on the Wi-Fi and Bluetooth on your phone before connecting LED Lights to the "Onforu Home" App.**

**Step 4: How to pair the LED Light**  
Set the light to the pairing state.  
1. Power on the LED Light.  
2. Turn the light on and off 3 times until it starts flashing, indicating that the light is ready for pairing.

**Method 1**

1. Tap "+" button on top right corner and tap "Add Device" to add device.  
2. The app will automatically search for the device. After discovering the device, tap "Add".  
3. Enter Wi-Fi password to join your network. Please Note:  
a. This smart LED Light can only support 2.4 GHz network and cannot work with 5.0 GHz network.  
b. Please check if your home network is 2.4 GHz and make sure that your phone has been connected to your Wi-Fi network. Please ensure your network is not hidden.

4. Wait for the device to register (about 30-60s).  
5. Tap "Next" to complete the light pairing.  
6. You can tap "Z" to change the device name.  
7. Tap "Done" to enter the control panel.

**Method 2**

1. Tap "+" button on top right corner and tap "Add Device" to add device.  
2. Tap "Lighting" and then "Light Source" to enter next page.  
3. Tap the "Next" button to pair the LED Light.  
4. Enter Wi-Fi password to join your network. Please Note:  
a. This smart LED Light can only support 2.4 GHz network and cannot work with 5.0 GHz network.  
b. Please check if your home network is 2.4 GHz and make sure that your phone has been connected to your Wi-Fi network. Please ensure your network is not hidden.  
5. Wait for the device to register (about 30-60s).

6. Tap "Next" to complete the light pairing.  
7. You can tap "Z" to change the device name.  
8. Tap "Done" to enter the control panel.

### HOW TO OPERATE THE APP

1. Go to Temperature and Brightness Adjustments.  
2. Motion Sensing Settings.  
3. Sensing records. Here you can view your sensing records.

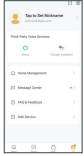
2.1. Sensing distance setting: Low (13-20ft), Middle (26-49ft) and High (49-72ft).  
2.2. Full light duration setting: From 5s to 60mins.  
2.3. Sensing records: Here you can view your sensing records.

### HOW TO OPERATE THE APP

3. Dusk-to-Dawn Settings.  
4. Slight Bright Mode.  
4.1. Microlight duration setting: Microlight duration can be set from 1min to 8hrs, or it can be set to be always on.

The sensitivity can be set to Day, Dusk, Evening, Night and Dark, and the light will be on at the selected time.  
5. Timing settings.

### HOW TO CONNECT WITH ALEXA AND GOOGLE ASSISTANT APP

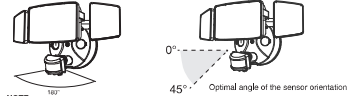


Tap "Me", find the third-party voice device you want to connect to and tap it, then follow the steps to connect.

11

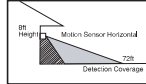
### OPERATION INSTRUCTIONS

Detection Range: 180°

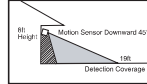


- NOTE:**  
 1. The PIR sensor shall always be tilted slightly downward.  
 2. The orientation angle of the sensor shall be between 0-45°.

**RECOMMENDED INSTALLATION HEIGHT: 6.5-13.1 feet above the ground.**



When mounted 8ft above the ground and the sensor is oriented horizontally, the maximum sensing distance is about 72ft.

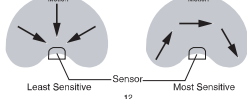


When mounted 8ft above the ground and the sensor is 45° down, the minimum sensing distance is about 19ft.

**Note:** The detection distance of the sensor is the furthest when the ambient temperature is 25°C. Any temperature fluctuations above or below 25°C will affect the detection distance.

If the light continues to detect motion while it is on, it will remain on until the motion stops.

The sensor will be more sensitive to motion across the motion towards it directly.



12

### PREPARATION

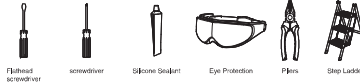
#### NOTE:

Before beginning assembly of product, make sure all parts are present. Compare parts with parts list. If any part is missing or damaged, do not attempt to assemble the product.  
**Estimated Assembly Time: 30-60 minutes.**

Recommended to be installed 2.5m (8.2ft) above the ground but not higher than 5m (16.4ft).

Product appearance may vary from image shown.

**TOOLS REQUIRED (not included)**



#### WARNING:

**THIS PRODUCT MUST BE INSTALLED IN ACCORDANCE WITH THE APPLICABLE INSTALLATION CODE BY A PERSON FAMILIAR WITH THE CONSTRUCTION AND OPERATION OF THE PRODUCT AND THE HAZARDS INVOLVED.**

#### CAUTION:

**PLEASE MAKE SURE YOUR WALL SWITCH AND POWER AT MAIN CIRCUIT BREAKER BOTH ARE OFF.**

**IF IN DOUBT ABOUT ELECTRICAL INSTALLATION, CONSULT A LICENSED ELECTRICIAN.**

13

### PREPARATION

#### RISK OF SHOCK:

**BEFORE BEGINNING INSTALLATION, TURN OFF ELECTRICITY AT THE CIRCUIT BREAKER BOX OR THE MAIN FUSE BOX.**

#### NOTE:

**BE SURE TO USE WIRE NUTS/CONNECTORS RATED FOR THE CORRECT GAUGE AND NUMBER OF WIRES USED.**

**MAKE SURE THERE ARE NO EXPOSED WIRE BUNDLES OUTSIDE THE WIRE NUT/CONNECTOR (IF APPLICABLE).**

**BE CAREFUL NOT TO DAMAGE OR CUT THE WIRE INSULATION (COVERING) DURING INSTALLATION. DO NOT LET THE WIRES TOUCH ANY SHARP EDGES.**

#### WARNING:

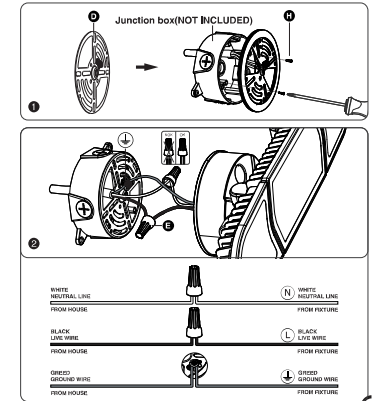
**DO NOT CONNECT THIS LIGHT FIXTURE TO AN UNGROUNDED ELECTRICAL SYSTEM. ATTACH GROUND FIXTURE WIRE TO EITHER GREEN GROUND SCREW ON MOUNTING PLATE OR THE GROUND WIRE IN THE OUTLET BOX.**

**INSTALLING THIS LIGHT IN AN UNGROUNDED ELECTRICAL SYSTEM MAY CAUSE THE METAL PARTS OF THE LIGHT TO CARRY CURRENT IF ANY WIRES OR WIRE CONNECTIONS ARE DAMAGED OR LOOSE. IN THIS CASE, ANYONE WHO TOUCHES THE LIGHT WILL RECEIVE AN ELECTRIC SHOCK, RESULTING IN INJURY OR DEATH.**

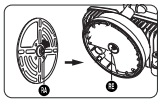
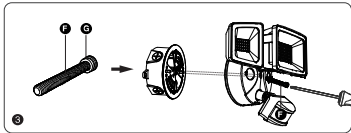
14

### INSTALLATION STEPS

**FOR WET LOCATION, MAKE SURE FILL FULL THE GAP OF EVA GASKET AND MOUNTING SURFACE WITH SEALING COMPOUND OR SILICONE GLUE.**



15



**Note:**  
 The raised part (RA) of the metal plate must be engaged with the recessed part (RE) of the base, otherwise it cannot be installed.

16

### TROUBLESHOOTING

Malfunction	Cause	Remedy
LED senses a movement, the light does not light up	1. The light is not energized 2. Other surrounding light sources make the light misjudge it as daytime 3. During the day, the brightness is in night mode 4. Internal wiring is loose	1. Check power-on status 2. Turn off the nearby lights or sensors 3. Reset 4. Rewiring after power failure
LED sensor light did not go out, continued to light up	Continuous movement within the sensing range	Check the relevant area and return or override the sensor head if necessary
LED sensor light illuminates during the day	The shadows around the sensor make it mistakenly think it's night	1. Do not cover the sensor head 2. Place the light in a place where the light is bright enough during the day
LED sensor light flashing	Surrounded by other unstable light sources shining onto the induction	Avoid being exposed to such light sources
LED lights turn on unexpectedly	1. Wind blows the branches and bushes within the sensing range 2. Sensing cars on the road 3. Sudden temperature change due to climate factors or fans, exhaust from open windows	1. Adjust its scope 2. Adjust its scope 3. Change irradiation area

17

### FCC ID: 2A3W8BDB100WF-3

#### FCC Warning:

Any Changes or modifications not expressly approved by the party responsible for compliance could void the user's authority to operate the equipment.  
 This device complies with part 15 of the FCC Rules. Operation is subject to the following two conditions:

- (1) This device may not cause harmful interference, and
- (2) This device must accept any interference received, including interference that may cause undesired operation.

**Note:** This equipment has been tested and found to comply with the limits for a Class B digital device, pursuant to part 15 of the FCC Rules. These limits are designed to provide reasonable protection against harmful interference in a residential installation. This equipment generates noise and can radiate radio frequency energy and, if not installed and used in accordance with the instructions, may cause harmful interference to radio communications. However, there is no guarantee that interference will not occur in a particular installation. If this equipment does cause harmful interference to radio or television reception, which can be determined by turning the equipment off and on, the user is encouraged to try to correct the interference by one or more of the following measures:

- Reorient or relocate the receiving antenna.
  - Increase the separation between the equipment and receiver.
  - Connect the equipment into an outlet on a circuit different from that to which the receiver is connected.
  - Consult the dealer or an experienced radio/TV technician for help.
- This equipment complies with FCC radiation exposure limits set forth for an uncontrolled environment. This equipment should be installed and operated with minimum distance 20cm between the radiator & your body.

18

HK Bright International Lighting Co., Limited  
 Unit 618, 6/F., Kam Teem Industrial Building, 135  
 Connaught Road West, Sai Wan Hong, Hong  
 Kong  
 Manufacturer/Hersteller: MDH LIGHTING LTD  
 Suite 302, 292 Sirotovos Avenue, 2018 Sirotovos Nicella,  
 Cyprus

UK Importer: MDH LIGHTING LTD  
 65 Abchurch Lane, Cambridge CB2 3DL,  
 United Kingdom

Made in China

support@onforoled.com www.onforoled.com

