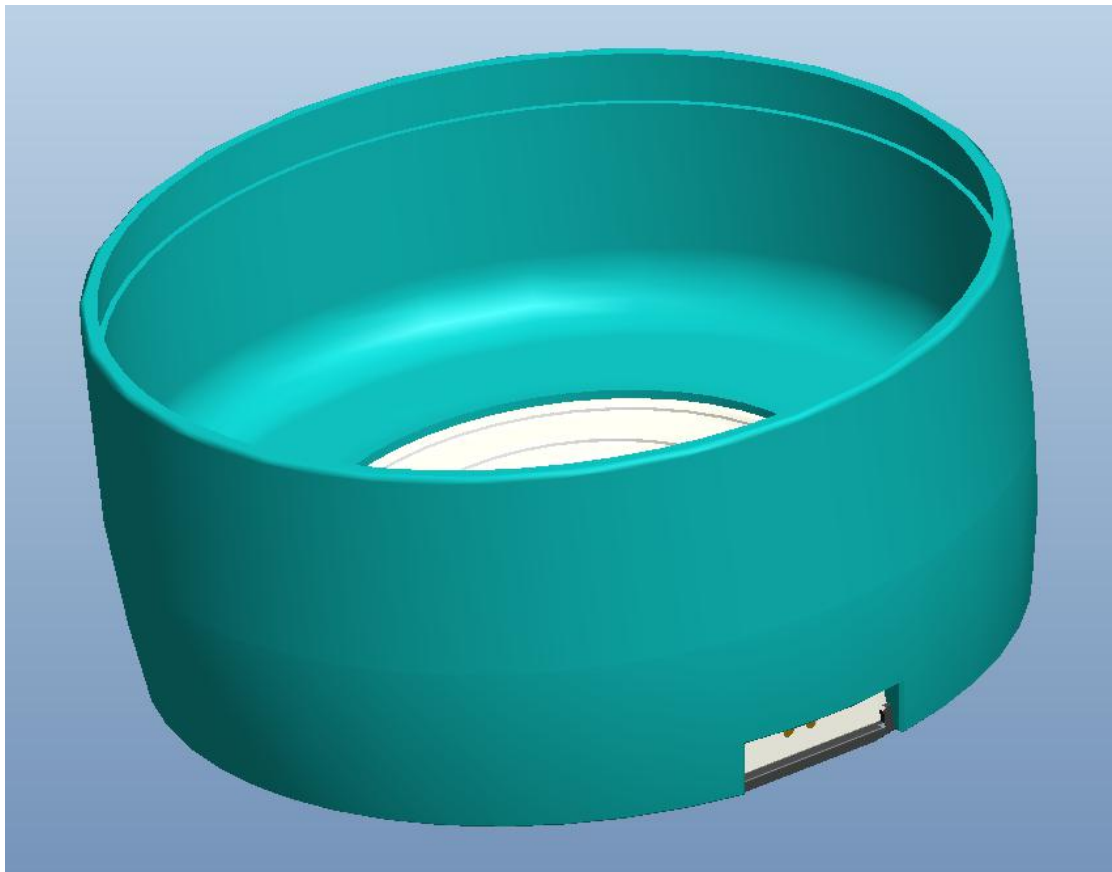


# Smart Bluetooth water cup set use manual



Version: V0.1

Directory

- one. Packaging list..... 3
- two. Product profile.....4
  - 1. product composition.....4
  - 2. feature profile.....5
- three. Note.....6

## 一. Packaging list

Product name	description	Number
The Smart Bluetooth Water Cup Kit	Kit composed of water cup silicone sleeve, weighing module and anti-skid silicone pad, the assembly and necessary calibration work have been completed from the factory	1 (Set)
Magnetic suction charging line <sup>-1</sup>	Power supply via standard U SB interface, power specification (5V/1A)	1 (Article)
Product instructions	This paper	1 (This)

Note: 1-magnet charging plug, should be kept away from magnetic conductive items, so as to avoid short circuit of charging power on absorption, which may cause fire in serious cases!

## two. Product profile

### 1. product composition

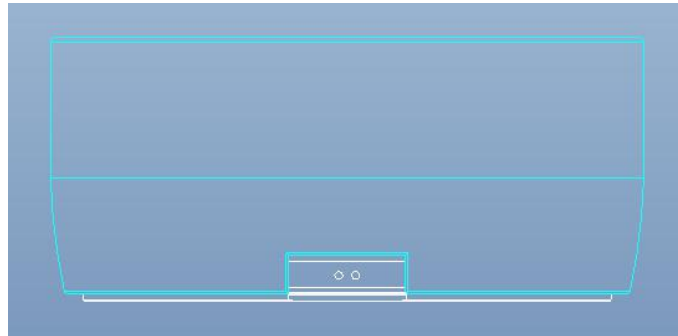


Figure-1 Front view

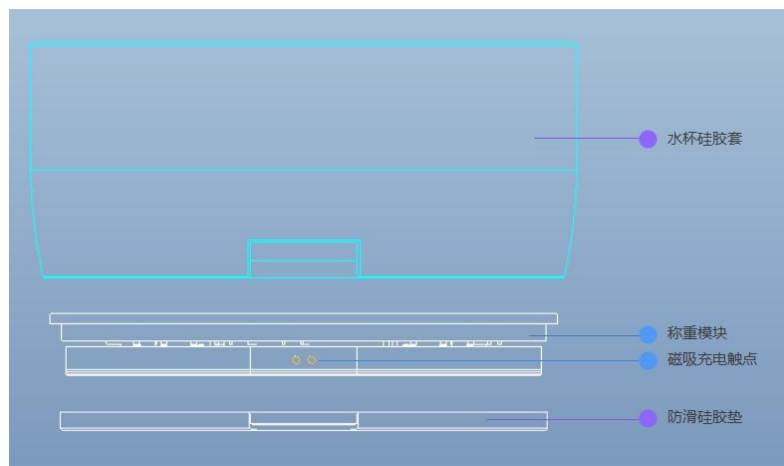


Figure 2-Product decomposition diagram

#### Basic parameters

Product name	Smart Bluetooth water cup case
Product model	K Z2101-1-140MM -X Among them: K Z2101-1: Project code -140MM: cup body size specification

	-X: silicone cover colors, e. g  B : blue  Y: yellow  ...
<b>Product size</b>	142X142X63mm
<b>Product weight</b>	283g
<b>Main material of the product</b>	1-A BS  2-Silicone
<b>Power input</b>	5V/1A

## *2. feature profile*

- Water quantity detection, push to A PP
- Water clearance / calibration / record calibration parameters (in factory mode)
- Gravity arousal
- Grgravity gravity action detected gravity gravity
- Power detection, push to A PP
- Magnetic suction charging
- Ultra-thin design, with a structural thickness of  $\leq 18\text{mm}$
- Structure waterproof / fall resistant, protection level of I P67
- Battery life of more than 2 weeks (average cumulative cup of 2h

per day)

- Product Certification (F CC/CE/RHOS)

## **three. Note**

- Do not put this product in the microwave oven, dishwasher and other equipment
- It is strictly prohibited to bring the products close to or into the fire source to avoid fire and explosion danger
- Please only apply to the special charging line provided by the product; the magnetic suction interface has directional adaptive function, do not force backconnection to avoid short circuit
- This product has a built-in battery. Users can not replace it by themselves. Do not try to remove it
- Do not use it in unstable places such as easy dumping and easy falling
- Stop use immediately during product use
- Keep the bottom of the product clean, do not have sediment, foreign bodies into the bottom activity mechanism, so as not to cause inaccurate weighing;

## **FCC Statement**

This device complies with part 15 of the FCC rules. Operation is subject to the following two conditions: (1) this device may not cause harmful interference, and (2) this device must accept any interference received, including interference that may cause undesired operation.

Changes or modifications not expressly approved by the party responsible for compliance could void the user's authority to operate the equipment.

NOTE: This equipment has been tested and found to comply with the limits for a Class B digital device, pursuant to part 15 of the FCC Rules. These limits are designed to provide reasonable protection against harmful interference in a residential installation. This equipment generates uses and can radiate radio frequency energy and, if not installed and used in accordance with the instructions, may cause harmful interference to radio communications. However, there is no guarantee that interference will not occur in a particular installation. If this equipment does cause harmful interference to radio or television reception, which can be determined by turning the equipment off and on, the user is encouraged to try to correct the interference by one or more of the following measures:

- Reorient or relocate the receiving antenna.
- Increase the separation between the equipment and receiver.
- Connect the equipment into an outlet on a circuit different from that to which the receiver is connected.
- Consult the dealer or an experienced radio/TV technician for help.

The device has been evaluated to meet general RF exposure requirement. The device can be used in portable exposure condition without restriction.