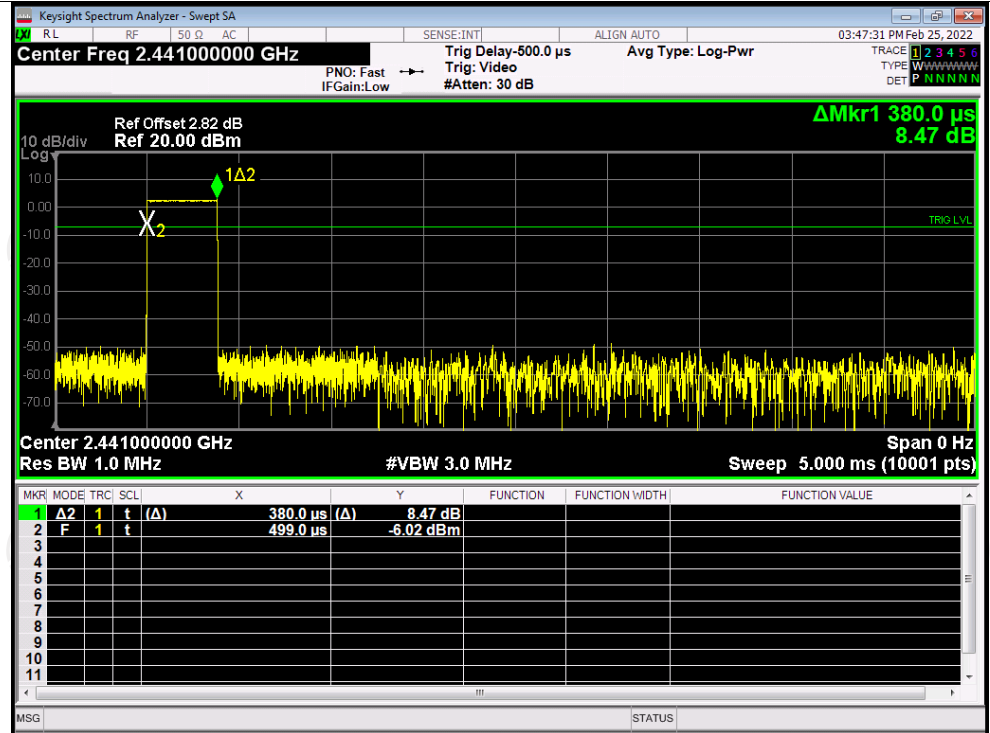


Dwell Time

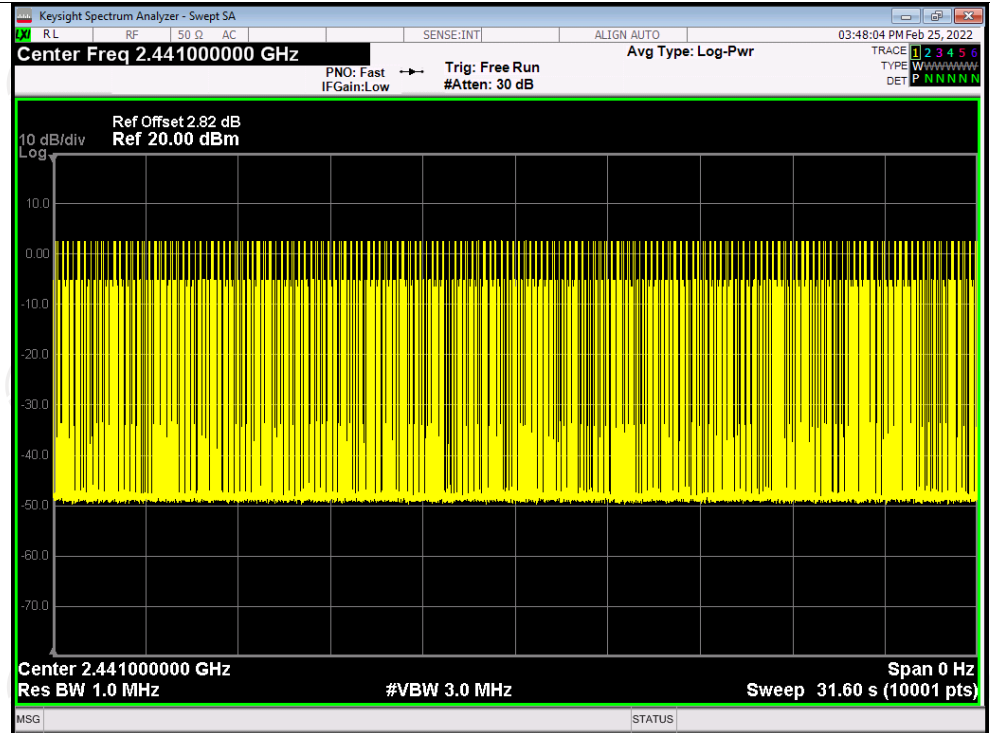
Condition	Mode	Frequency (MHz)	Pulse Time (ms)	Total Dwell Time (ms)	Burst Count	Period Time (ms)	Limit (ms)	Verdict
NVNT	1-DH1	2441	0.38	120.08	316	31600	400	Pass
NVNT	1-DH3	2441	1.64	264.04	161	31600	400	Pass
NVNT	1-DH5	2441	2.89	309.23	107	31600	400	Pass
NVNT	2-DH1	2441	0.39	124.02	318	31600	400	Pass
NVNT	2-DH3	2441	1.64	257.48	157	31600	400	Pass
NVNT	2-DH5	2441	2.89	283.22	98	31600	400	Pass
NVNT	3-DH1	2441	0.39	124.02	318	31600	400	Pass
NVNT	3-DH3	2441	1.64	262.4	160	31600	400	Pass
NVNT	3-DH5	2441	2.89	338.13	117	31600	400	Pass

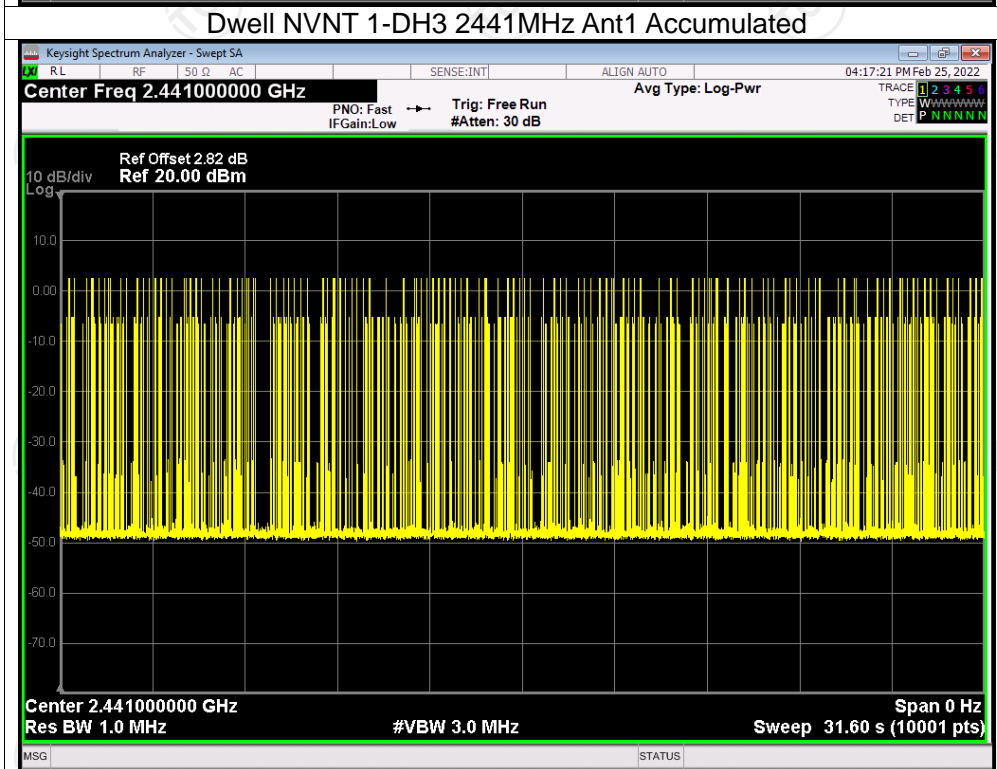
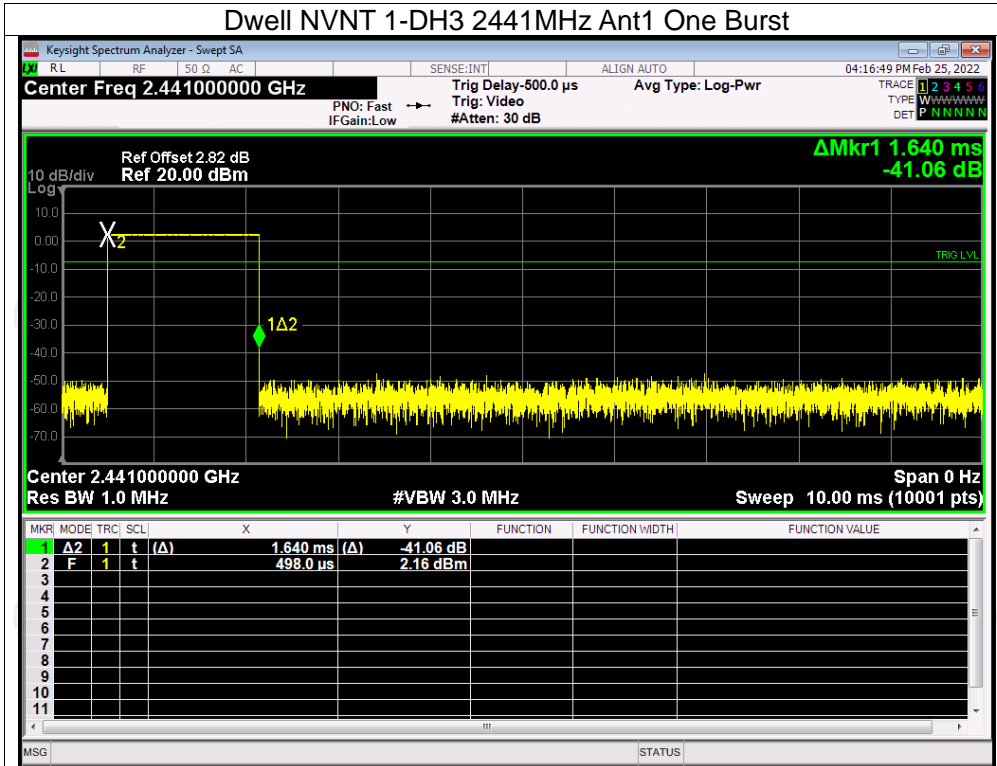
Test Graphs

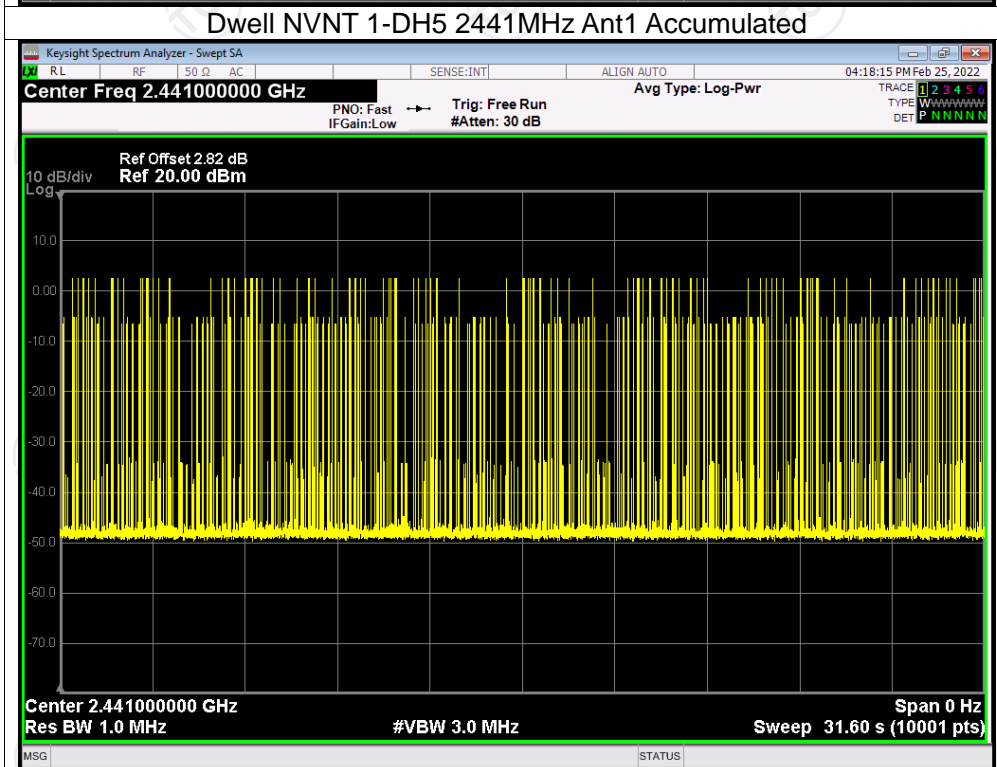
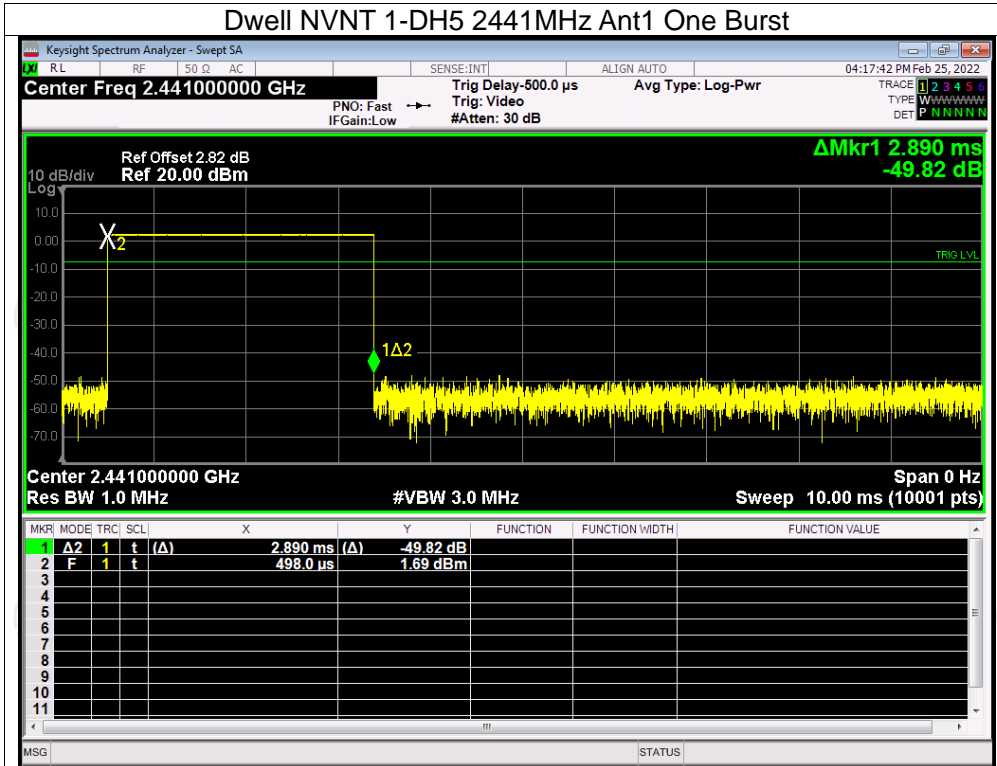
Dwell NVNT 1-DH1 2441MHz Ant1 One Burst

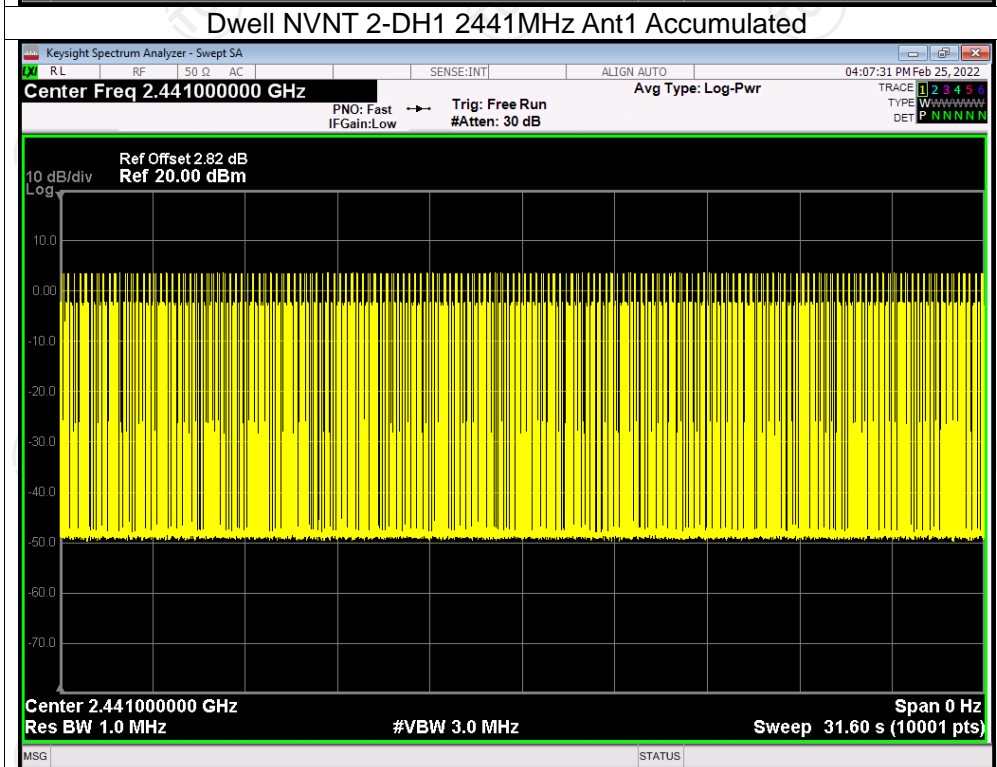
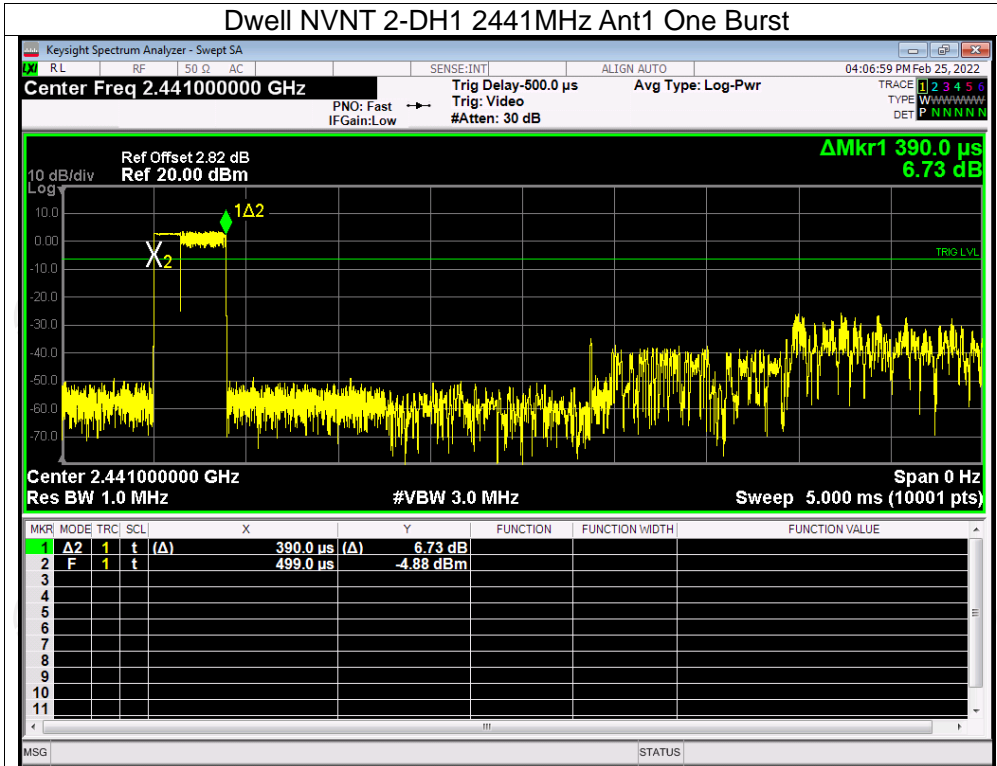


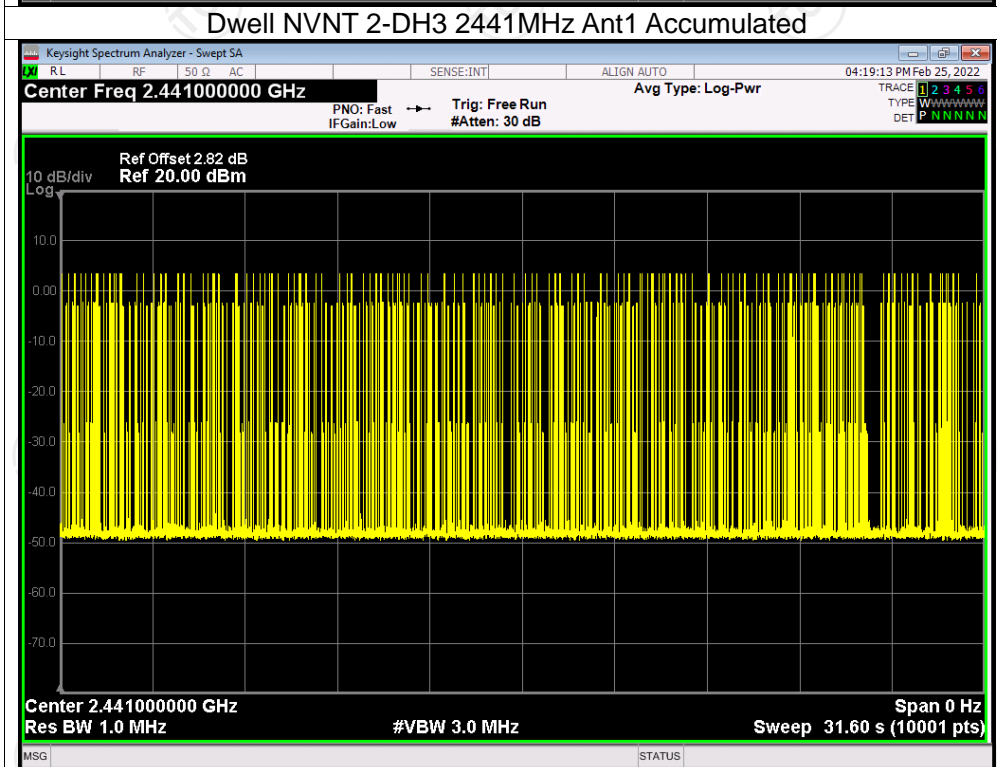
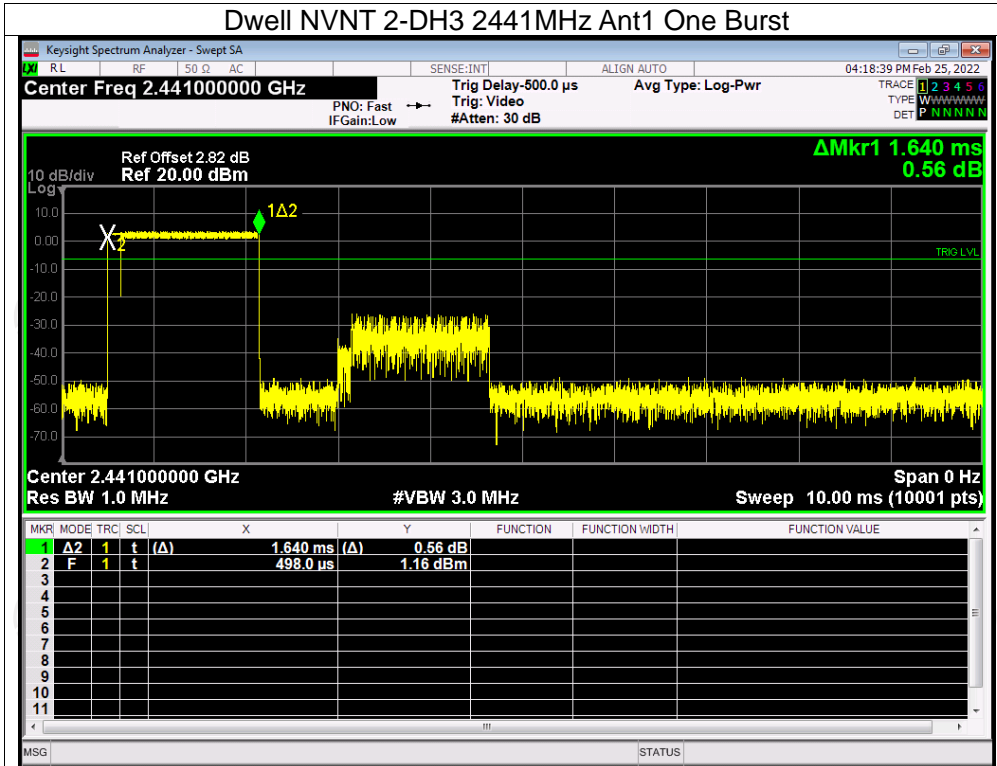
Dwell NVNT 1-DH1 2441MHz Ant1 Accumulated

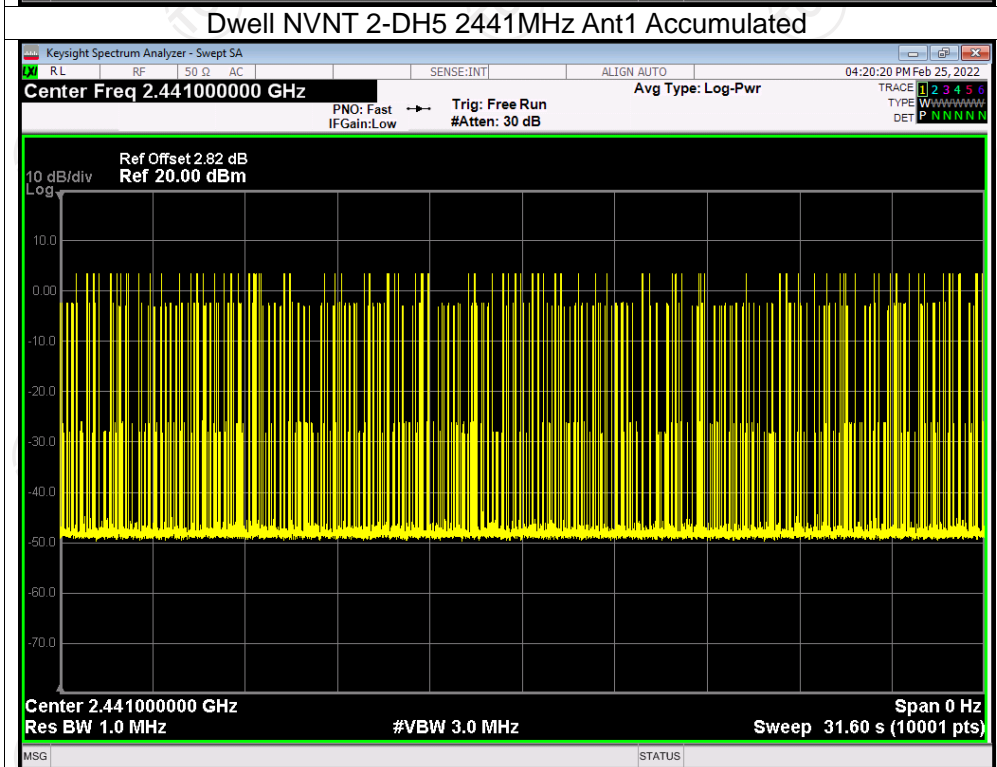
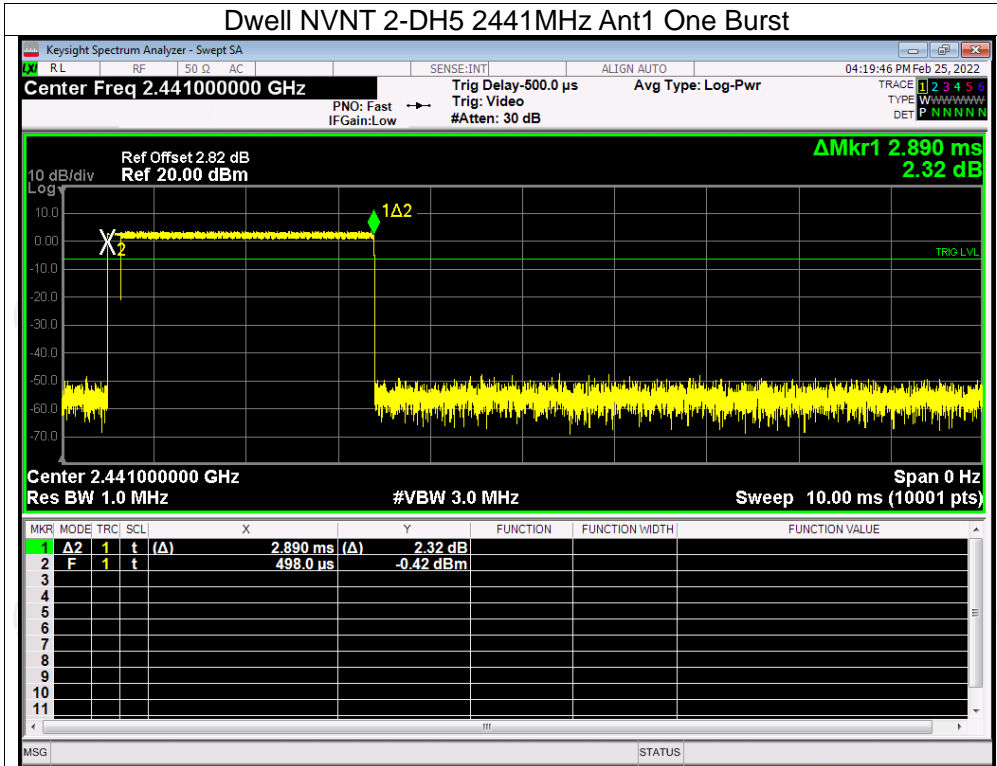


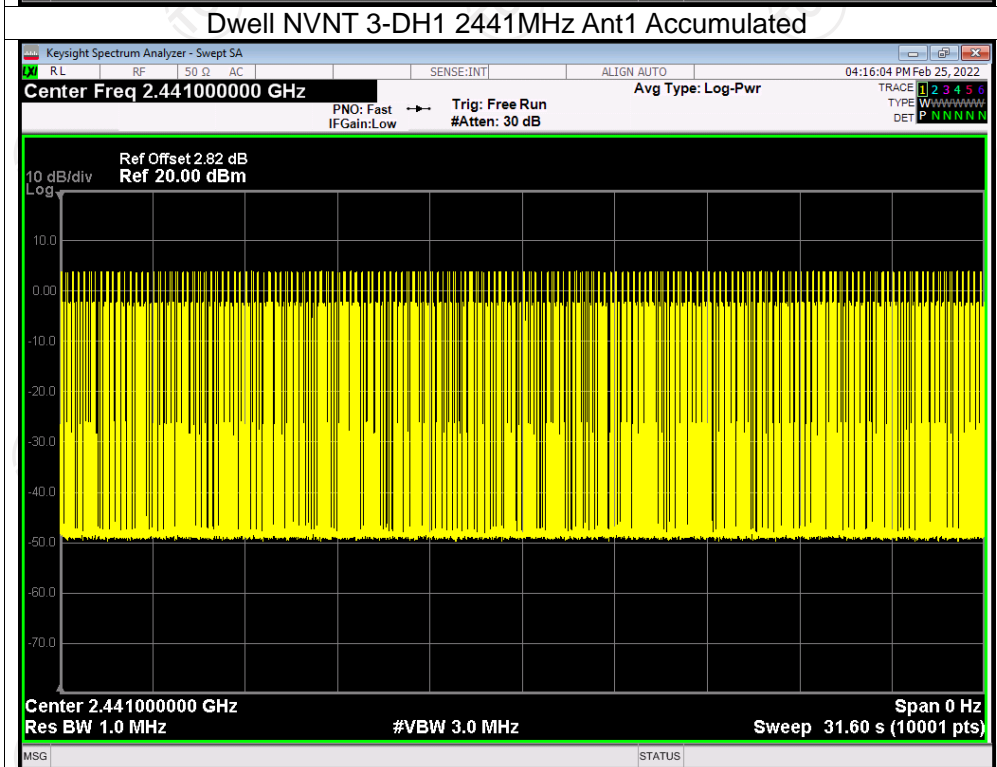
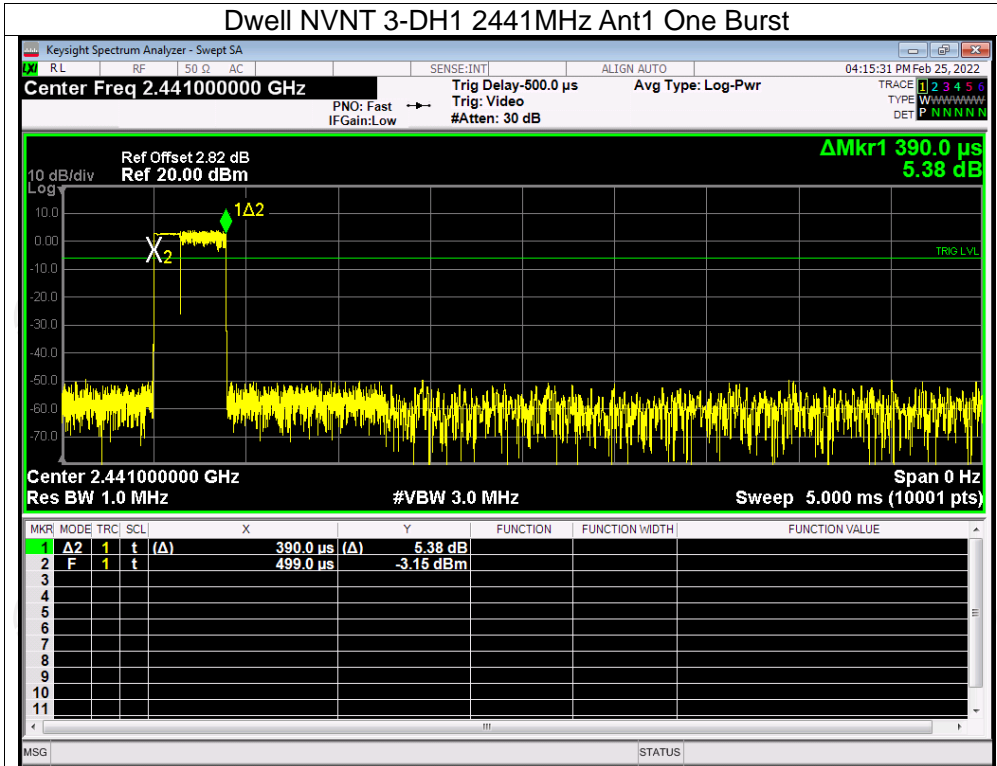


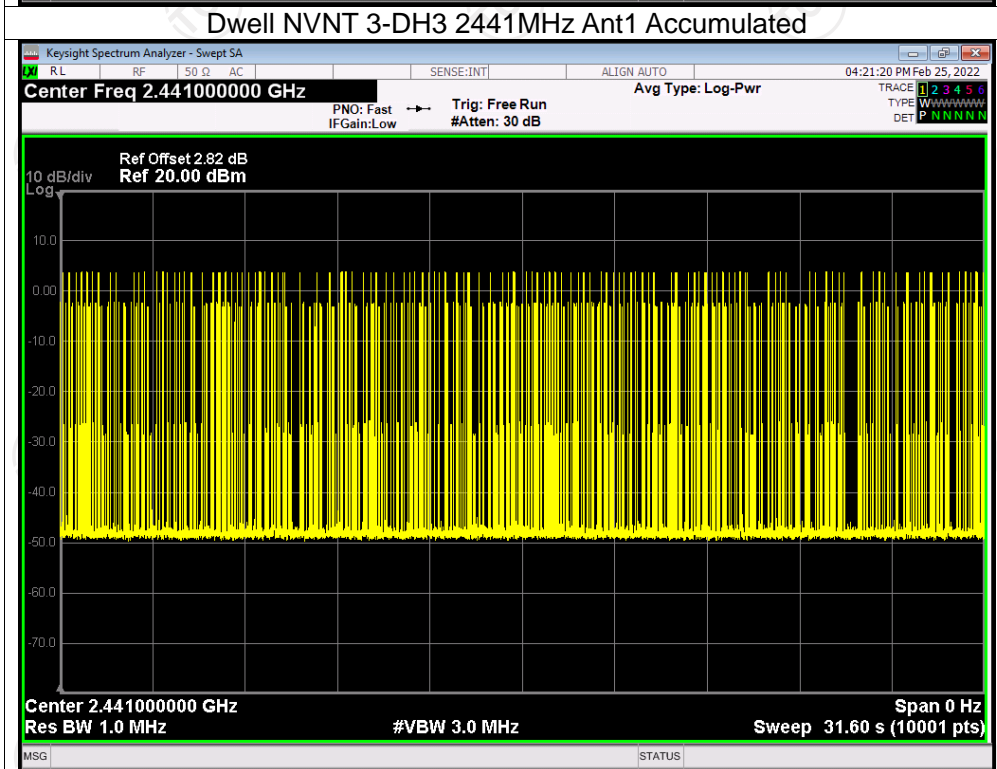
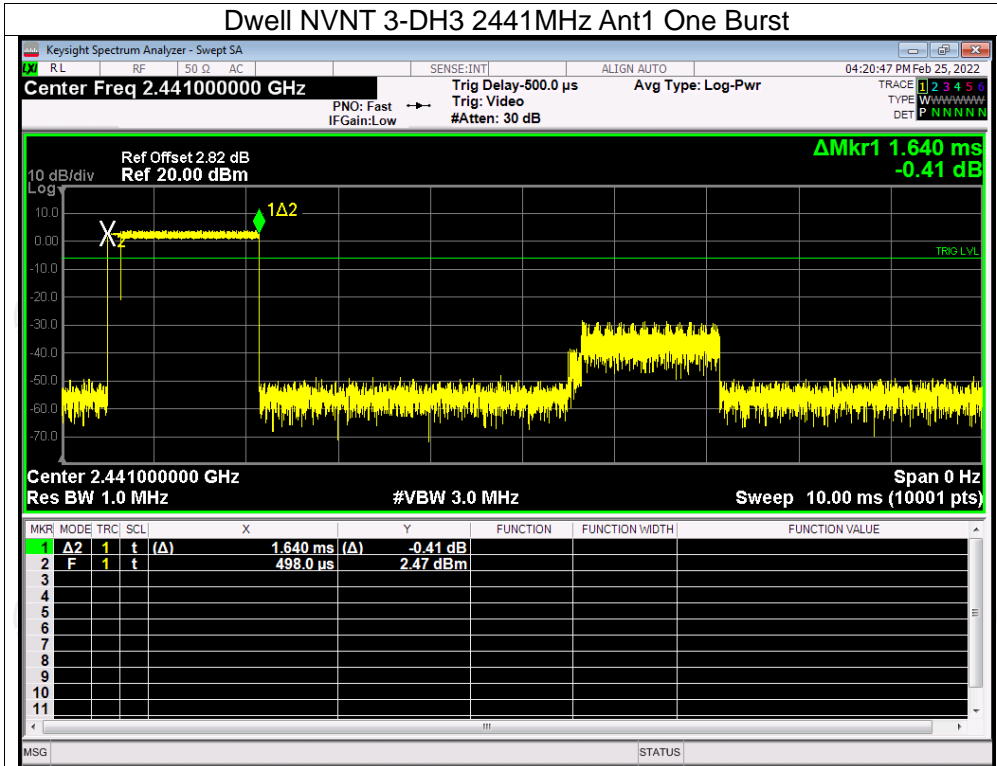


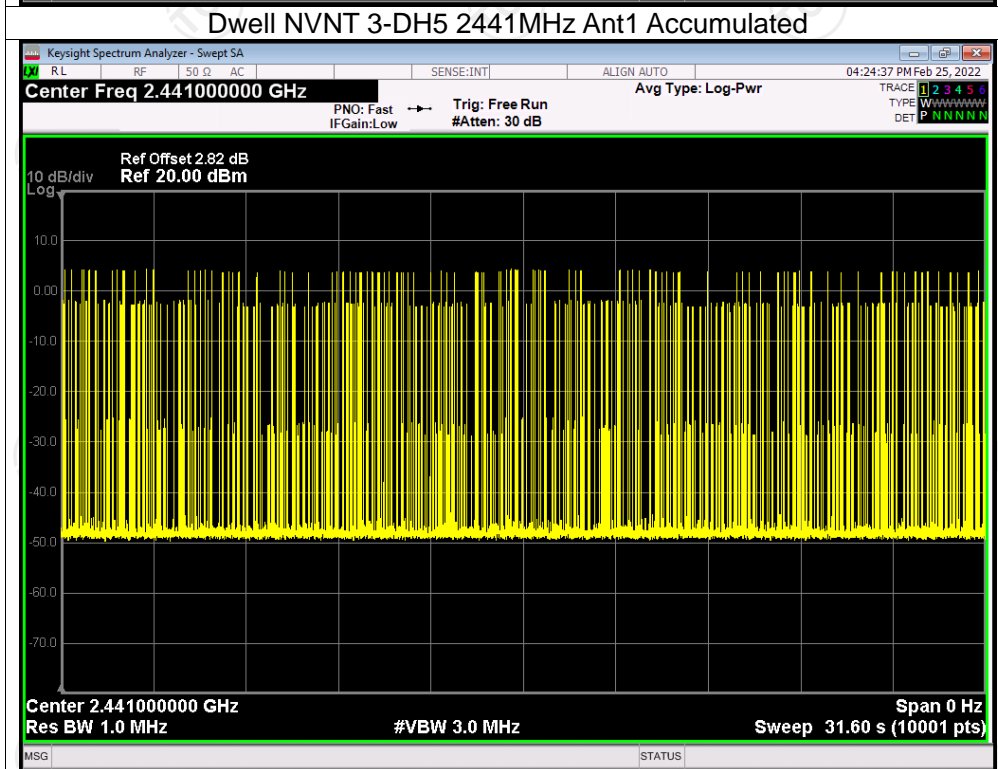
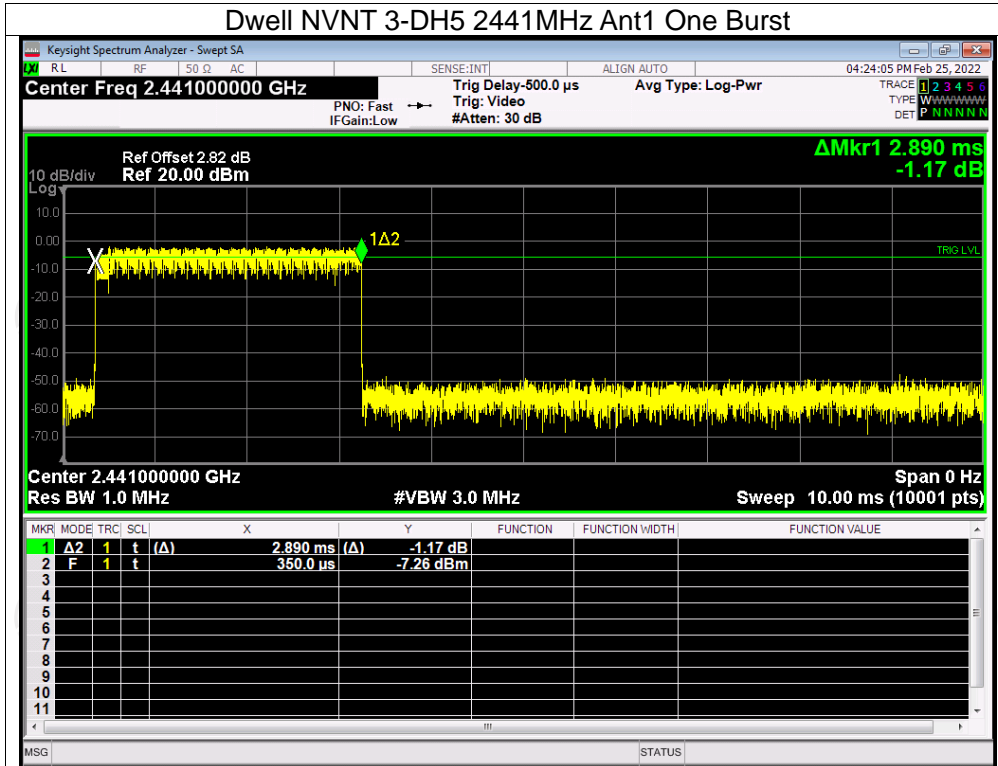










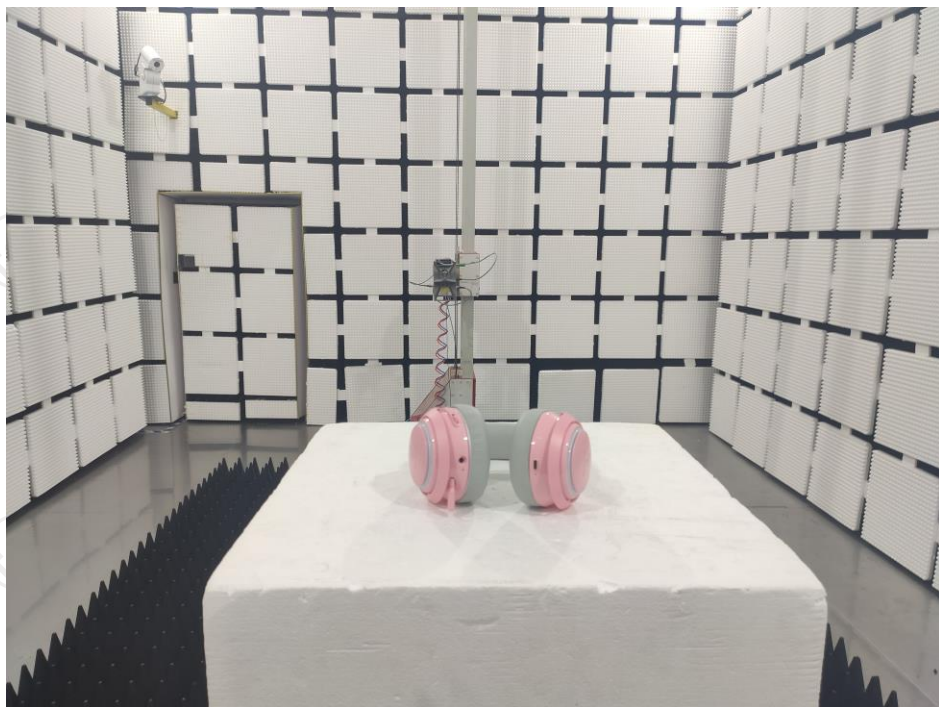


Appendix B: Photographs of Test Setup

Product: GS510 wireless headset

Model: Extreme version

Radiated Emission



Conducted Emission



Appendix C: Photographs of EUT
Product: GS510 wireless headset
Model: Extreme version
External Photos

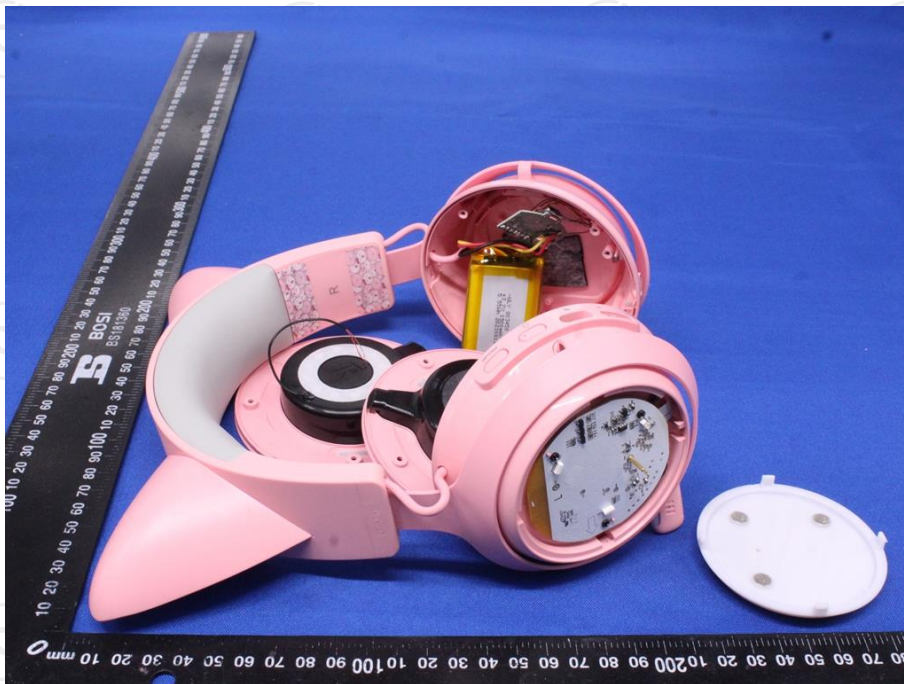


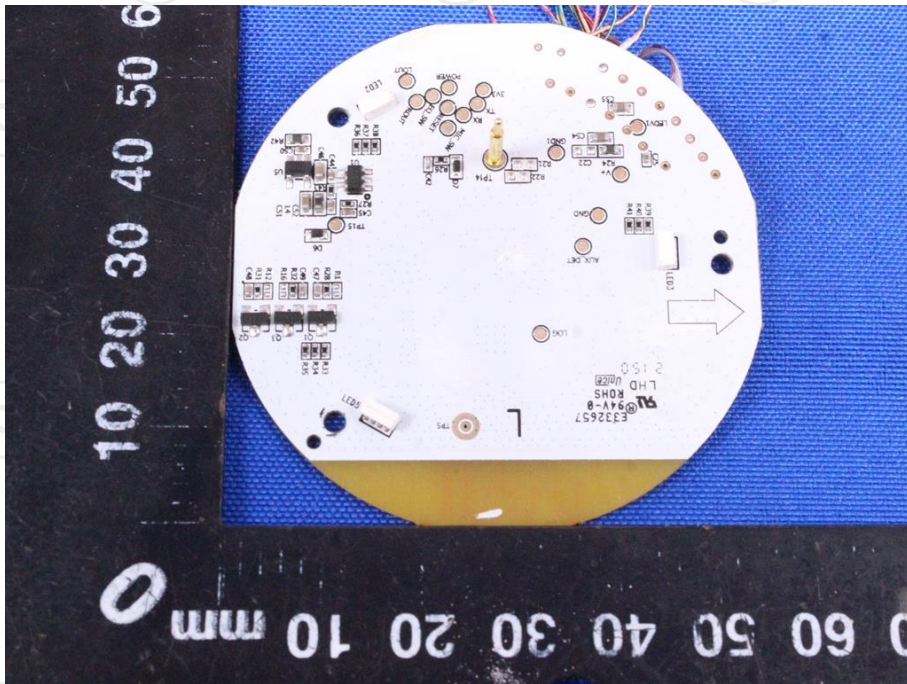
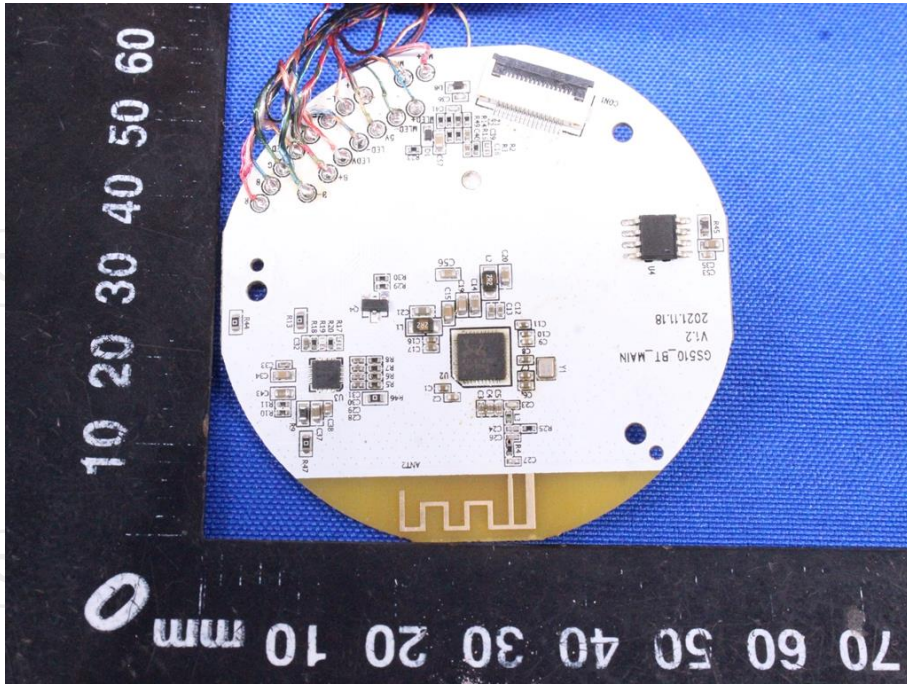


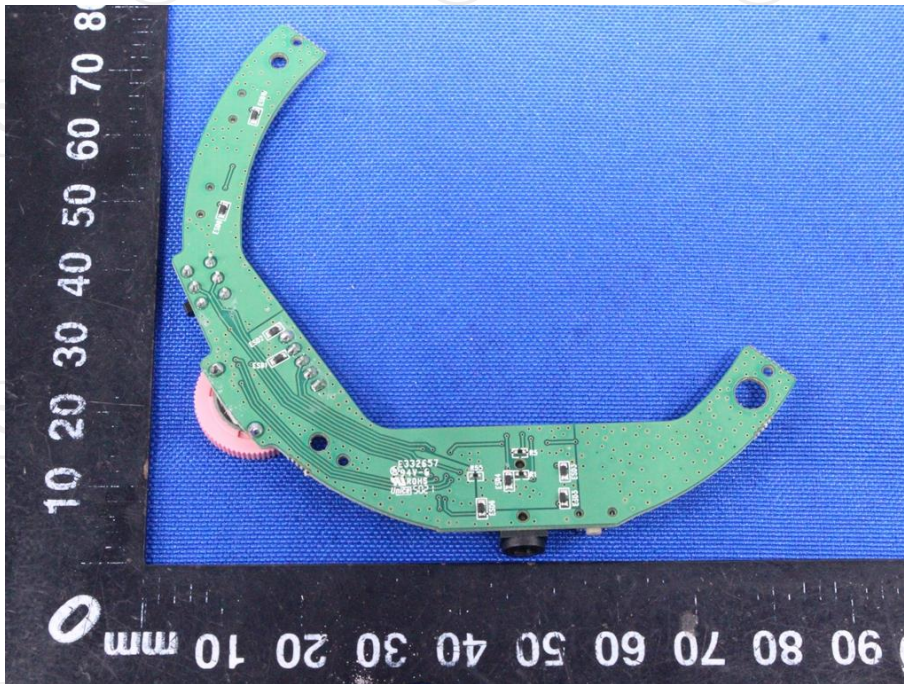
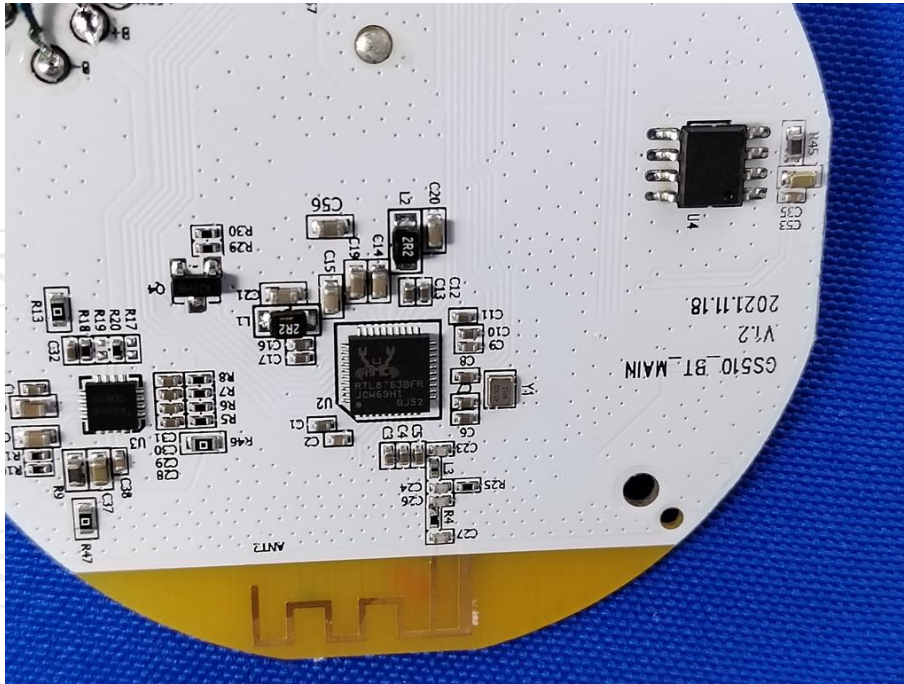


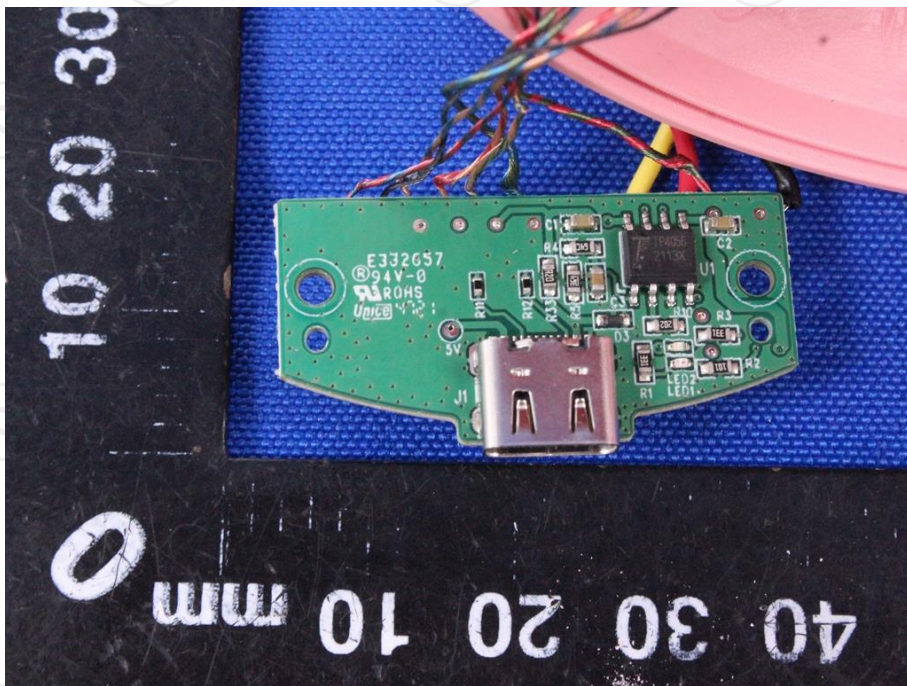
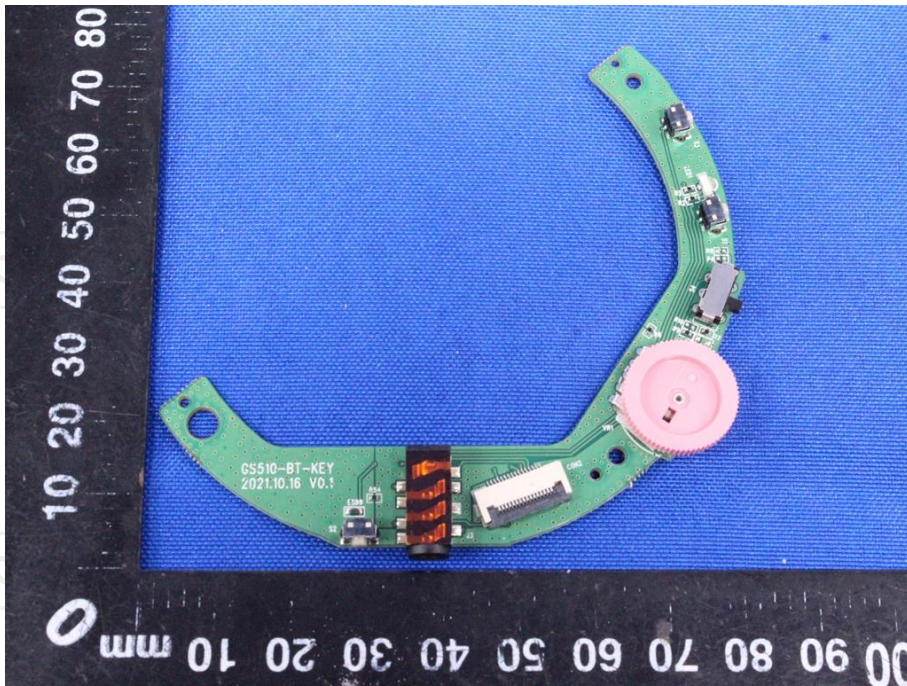


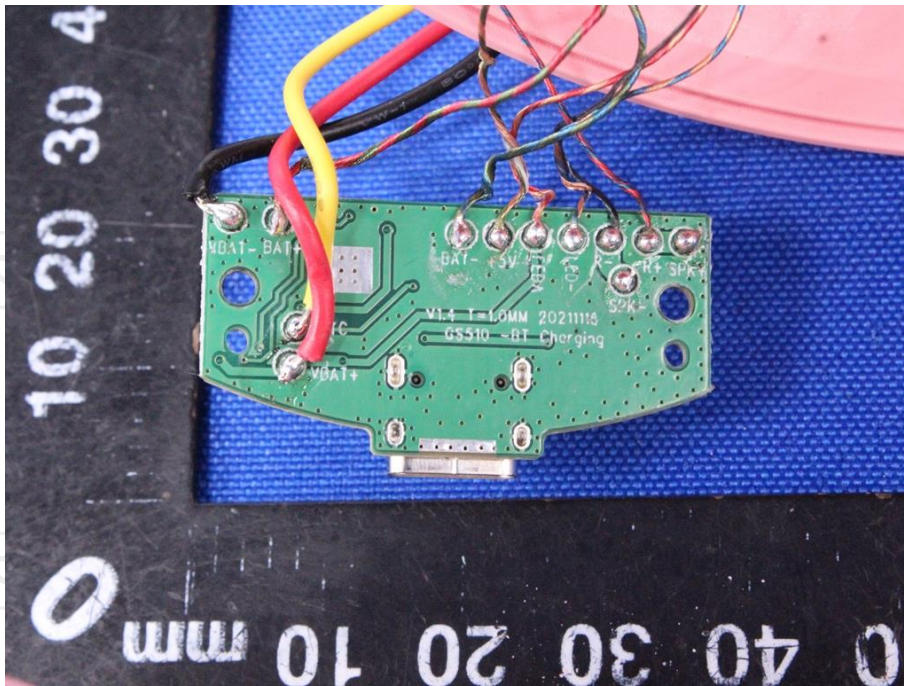
Product: GS510 wireless headset
Model: Extreme version
Internal Photos

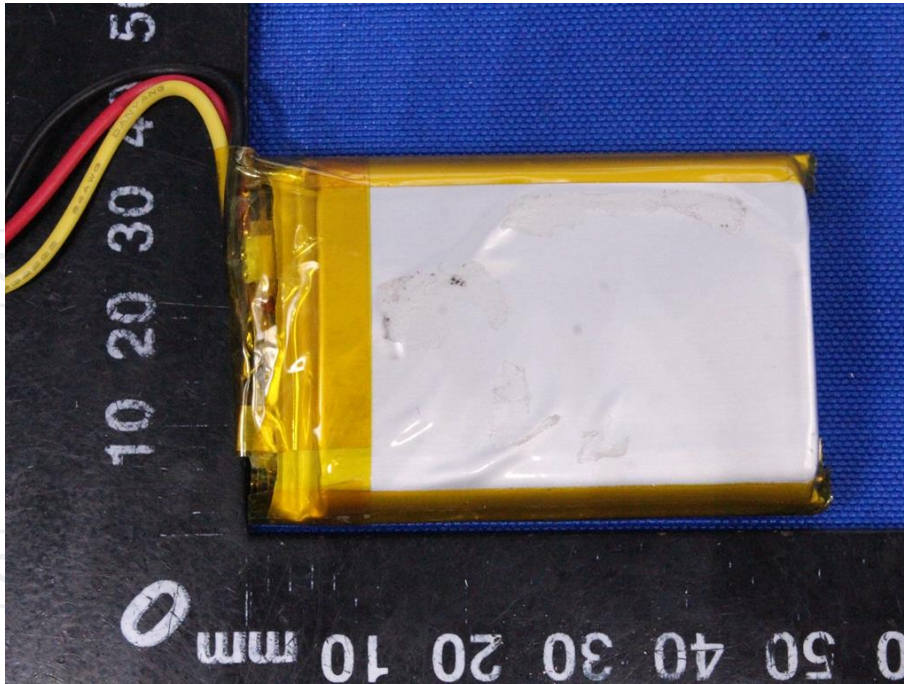












*****END OF REPORT*****