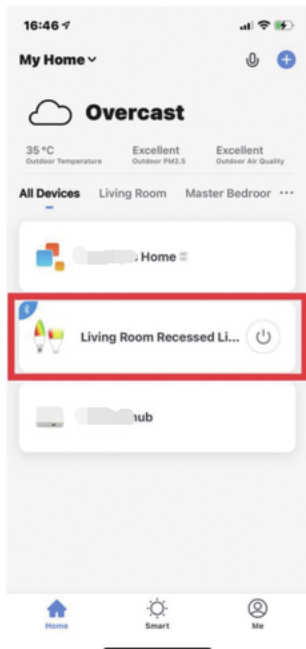


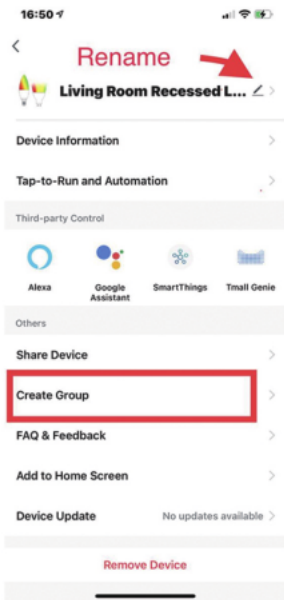
How to control multiple Recessed Lighting at the same time?

1. Click on the "Home" page.
2. Choose one of the Recessed Lighting you want to control.

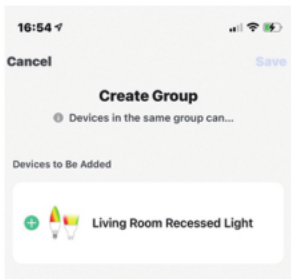
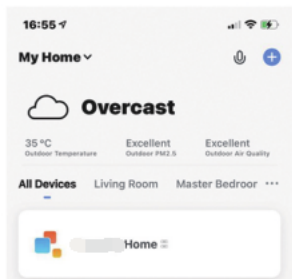


3. Click the "..." option in the top right corner.

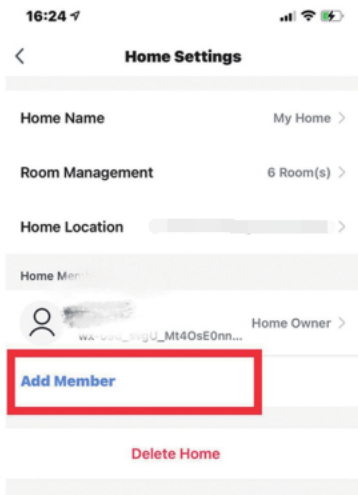
4. Click "Create Group"



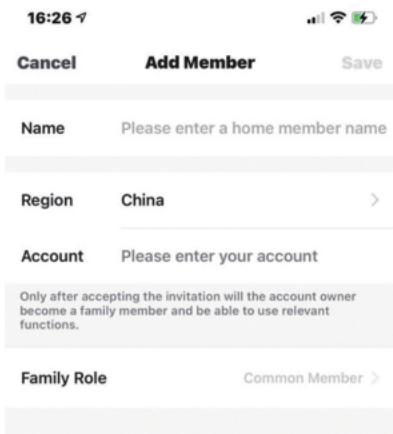
5. Choose all the Recessed Lighting you want to control.



5. Click "Add Member"



6. Finally enter family account information.



Warning

1. Please do not unplug the middle interface when the power is on, If you need to unplug, please unplug the power in advance.
2. Turn power off from the electrical panel prior to installation.
3. Determine the location for installation and cut ceiling hole in accordance with cut-hole dimensions. The hole size is: 105mm
4. Open the junction box cover and remove the appropriate knockout(s) on the side panel. The junction box cover is best to face up.
5. Using quick-connect push-in terminals, connect the ground wire to the same terminal; connect the black wire to the same terminal; connect the white wire to the same terminal.
6. Place all wiring and connections back in to the box and close the cover. Connect the driver to the light panel.
7. Insert junction box through the mounting hole.
8. Push spring-loaded clips on the fixture upwards and insert fixture base in to the mounting hole. Release the clips and fixture will be pulled flush to the ceiling.

This equipment has been tested and found to comply with the limits for a Class B digital device, pursuant to part 15 of the FCC Rules. These limits are designed to provide reasonable protection against harmful interference in a residential installation. This equipment generates, uses and can radiate radio frequency energy and, if not installed and used in accordance with the instructions, may cause harmful interference to radio communications. However, there is no guarantee that interference will not occur in a particular installation. If this equipment does cause harmful interference to radio or television reception, which can be determined by turning the equipment off and on, the user is encouraged to try to correct the interference by one or more of the following measures:

- Reorient or relocate the receiving antenna.
- Increase the separation between the equipment and receiver.
- Connect the equipment into an outlet on a circuit different from that to which the receiver is connected.
- Consult the dealer or an experienced radio/TV technician for help.

Caution: Any changes or modifications to this device not explicitly approved by manufacturer could void your authority to operate this equipment.

This device complies with part 15 of the FCC Rules.

Operation is subject to the following two conditions:

- (1) This device may not cause harmful interference,
- and (2) this device must accept any interference received, including interference that may cause undesired operation.

RF Exposure Information

This equipment complies with FCC radiation exposure limits set forth for an uncontrolled environment. This equipment should be installed and operated with minimum distance 20cm between the radiator and your body.