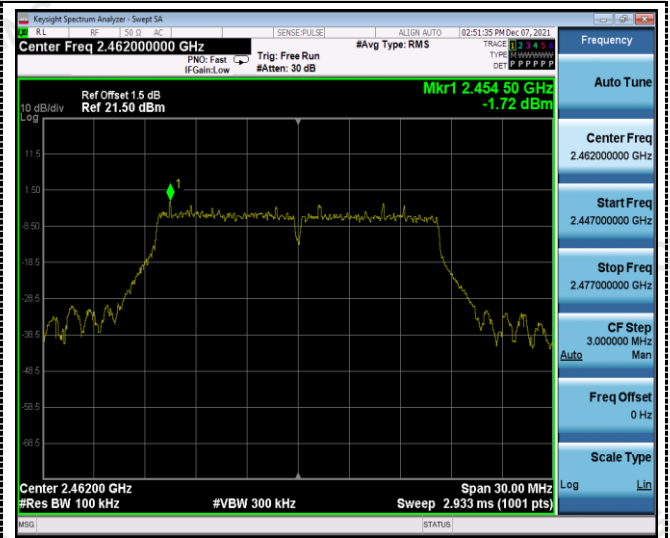


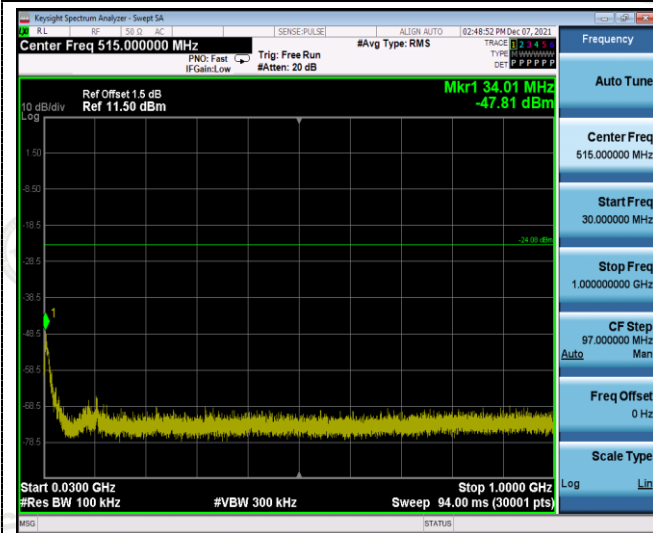
802.11g



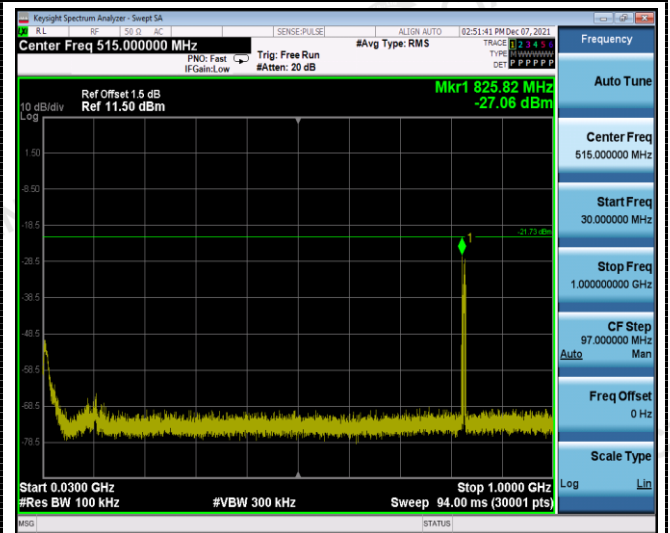
Reference
CH06



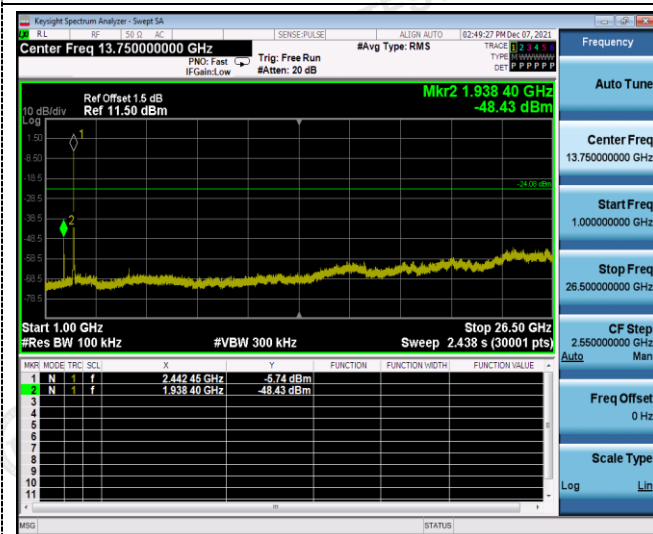
Reference
CH11



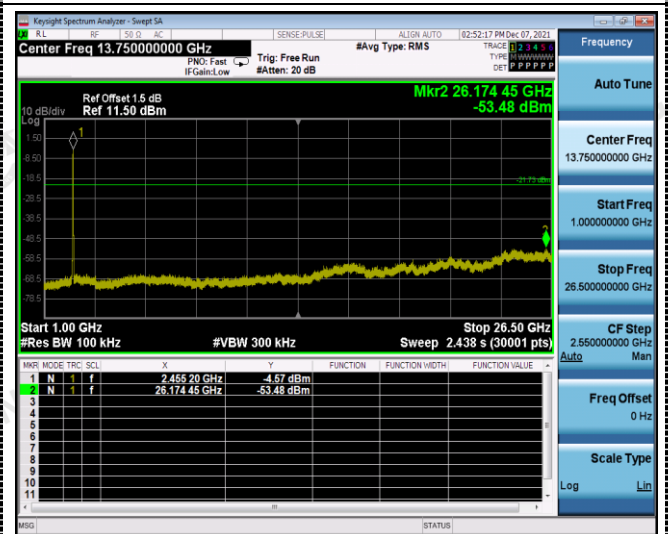
30MHz-1GHz



30MHz-1GHz



1GHz -25GHz

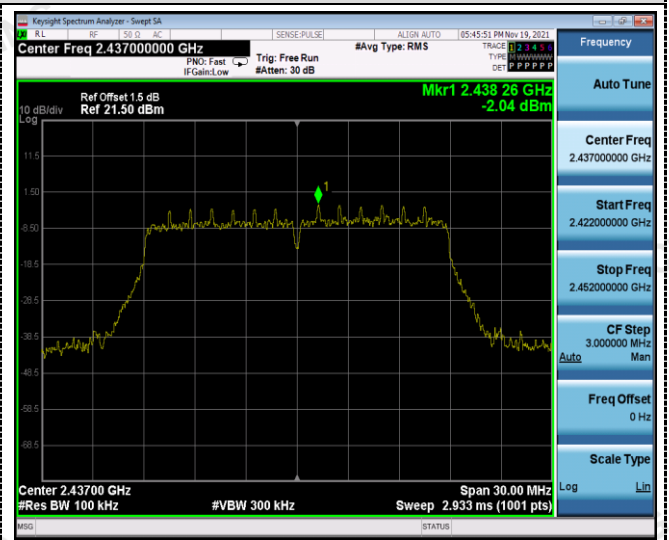


1GHz -25GHz

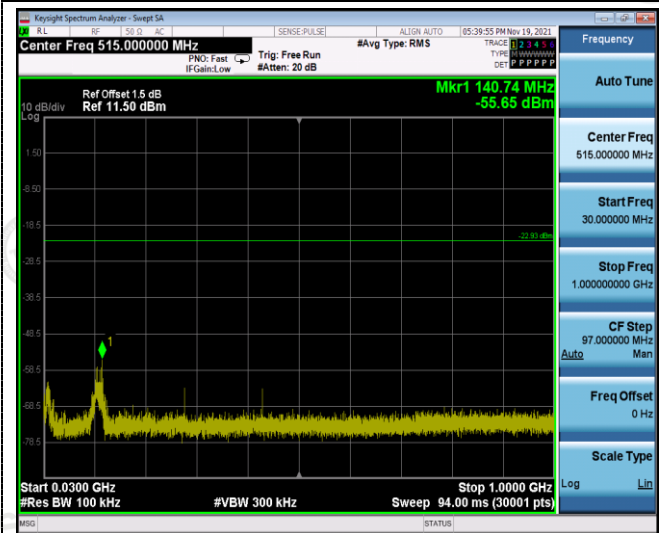
802.11n20



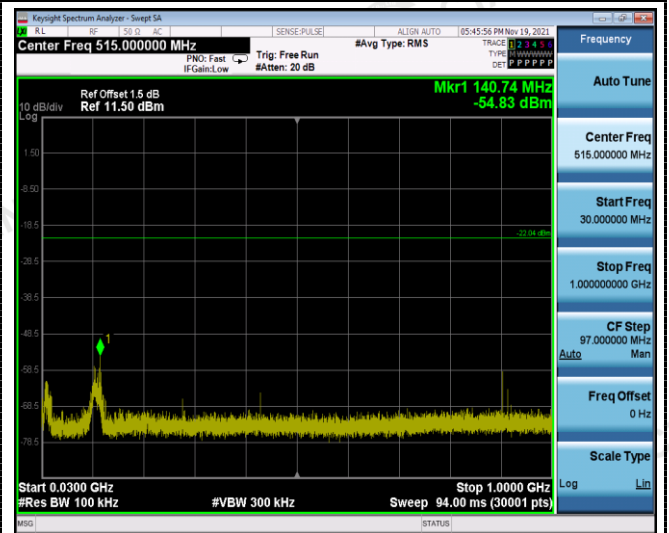
Reference
CH01



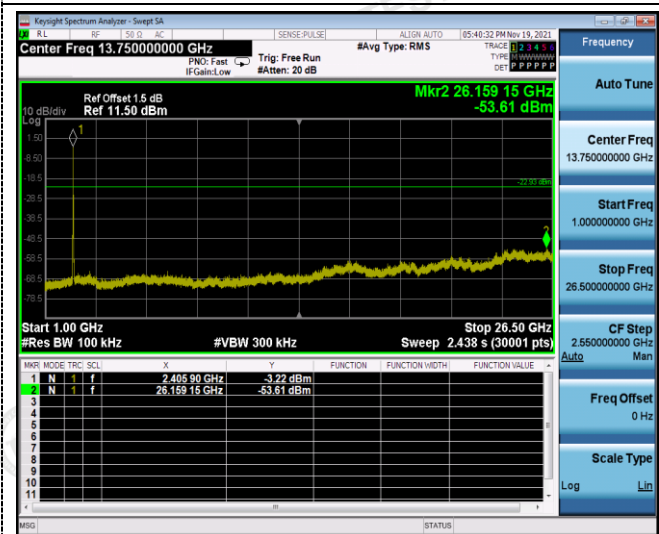
Reference
CH06



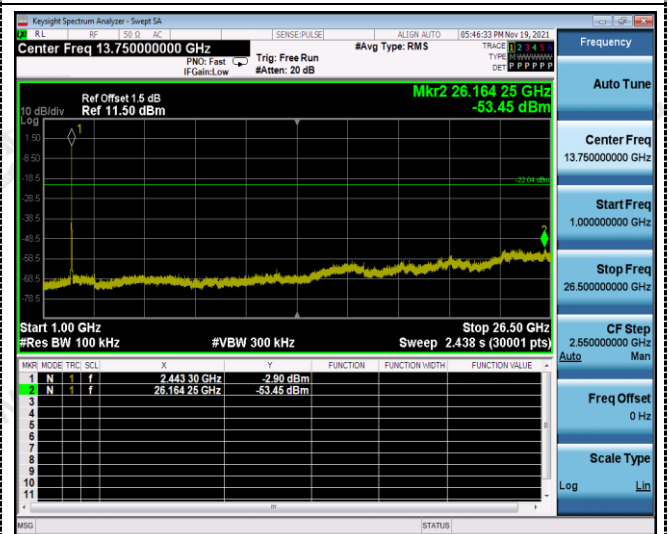
30MHz-1GHz



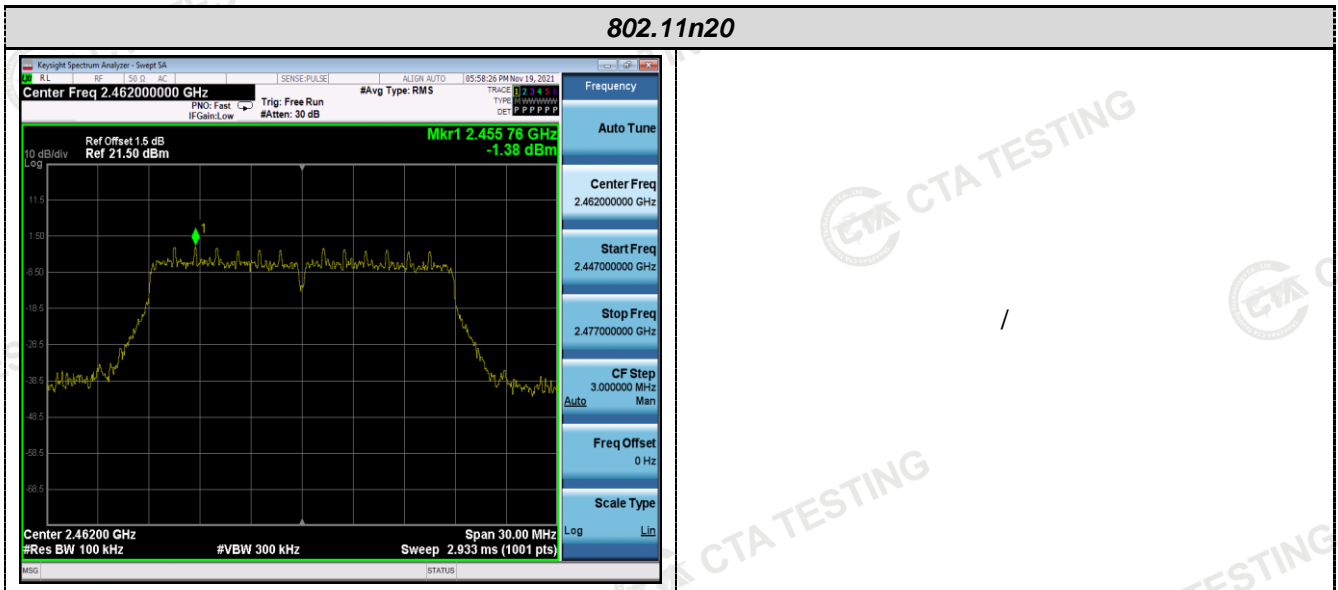
30MHz-1GHz



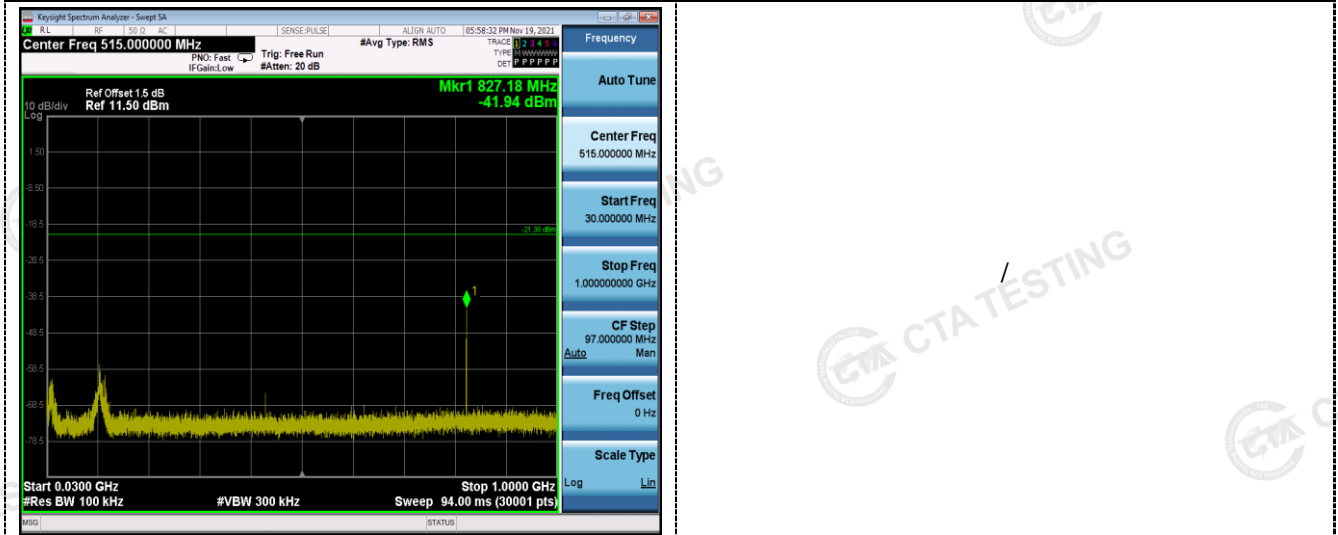
1GHz -25GHz



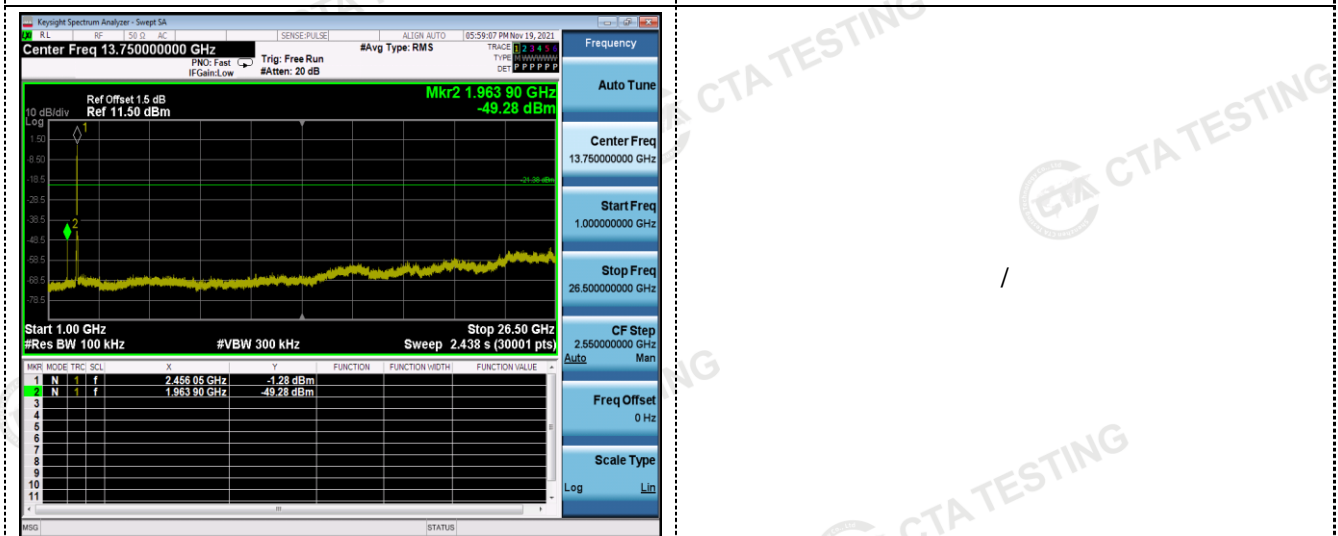
1GHz -25GHz



Reference
CH11



30MHz-1GHz



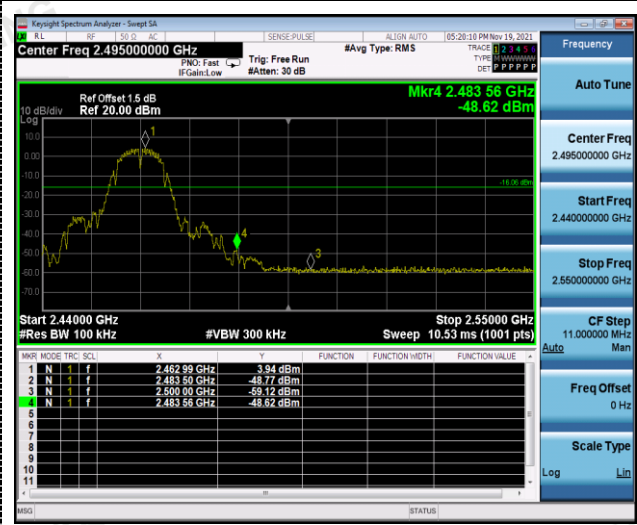
1GHz -25GHz

Band-edge Measurements for RF Conducted Emissions:

802.11b

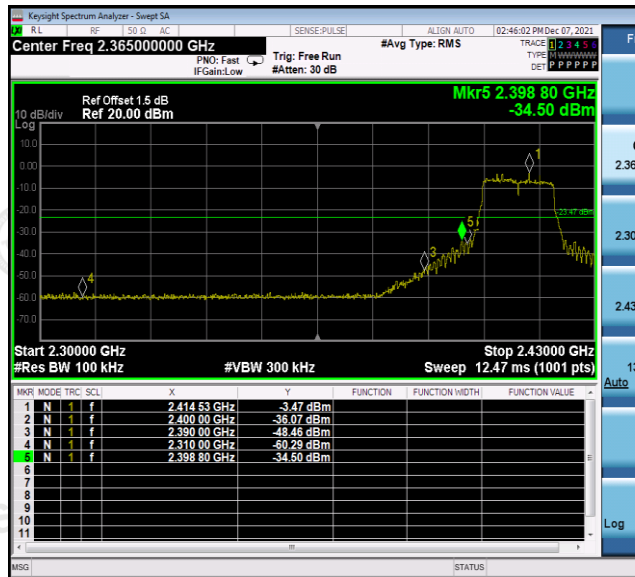


Left bandedge

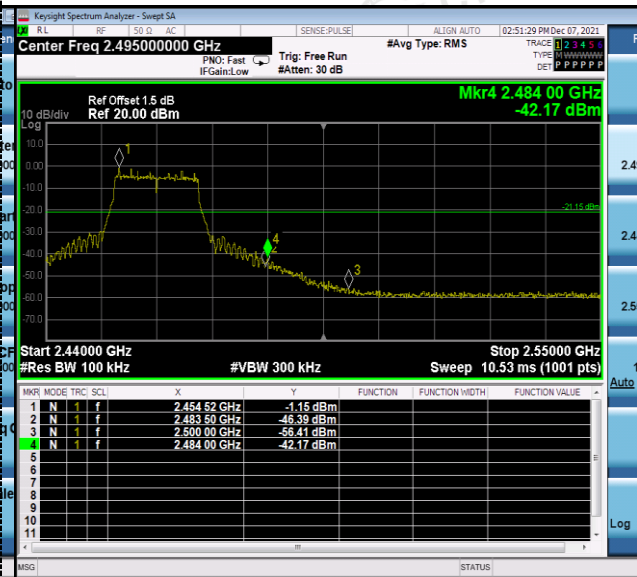


Right bandedge

802.11g



Left bandedge



Right bandedge

802.11n(HT20)



Left bandedge



Right bandedge

4.7 Antenna Requirement

Standard Applicable

For intentional device, according to FCC 47 CFR Section 15.203:

An intentional radiator shall be designed to ensure that no antenna other than that furnished by the responsible party shall be used with the device. The use of a permanently attached antenna or of an antenna that uses a unique coupling to the intentional radiator, the manufacturer may design the unit so that a broken antenna can be replaced by the user, but the use of a standard antenna jack or electrical connector is prohibited

FCC CFR Title 47 Part 15 Subpart C Section 15.247(c) (1) (I):

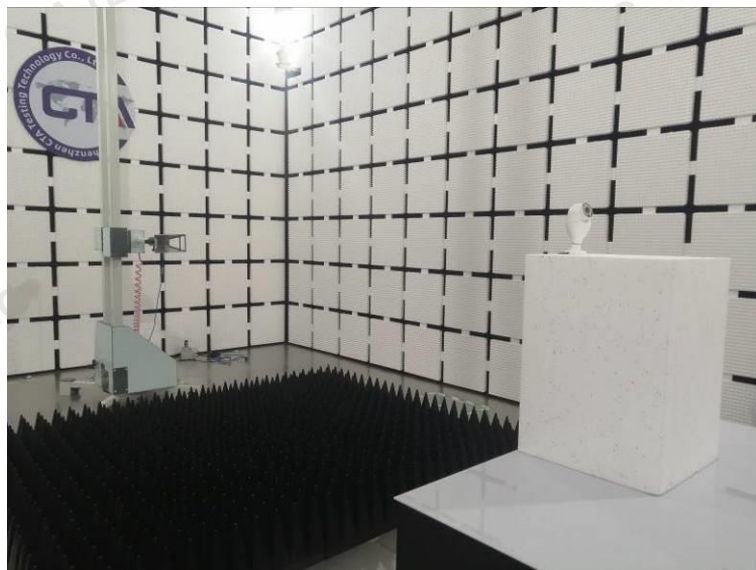
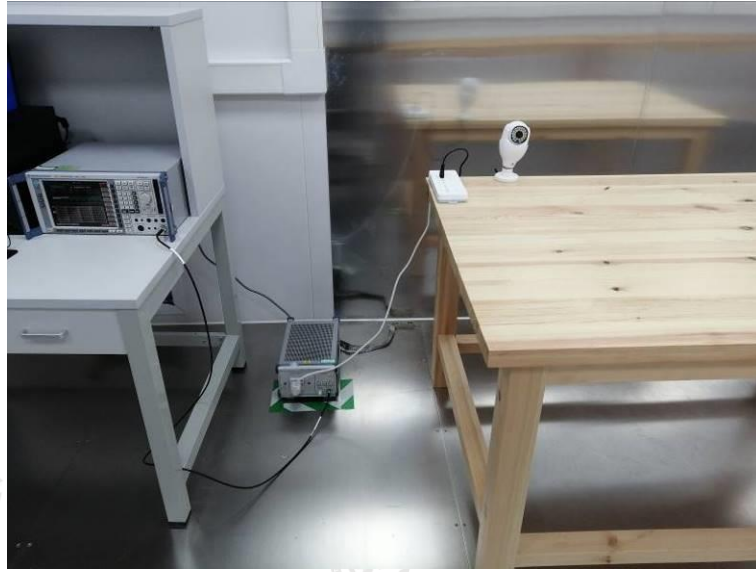
(i) Systems operating in the 2400-2483.5 MHz band that is used exclusively for fixed. Point-to-point operations may employ transmitting antennas with directional gain greater than 6dBi provided the maximum conducted output power of the intentional radiator is reduced by 1 dB for every 3 dB that the directional gain of the antenna exceeds 6dBi.

Test Result:

The maximum gain of antenna 0 and antenna1 were 0.00 dBi for 2.4GHz WIFI.

Remark:The antenna gain is provided by the customer , if the data provided by the customer is not accurate, Shenzhen CTA Testing Technology Co., Ltd. does not assume any responsibility.

5 Test Setup Photos of the EUT

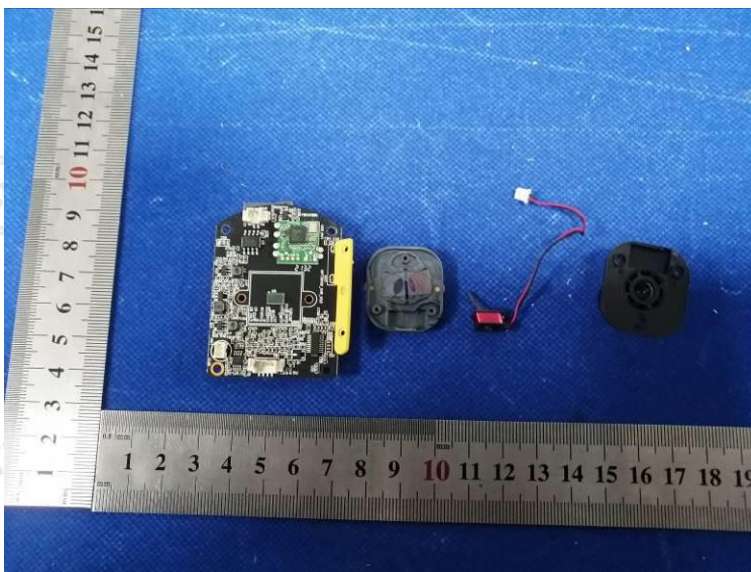


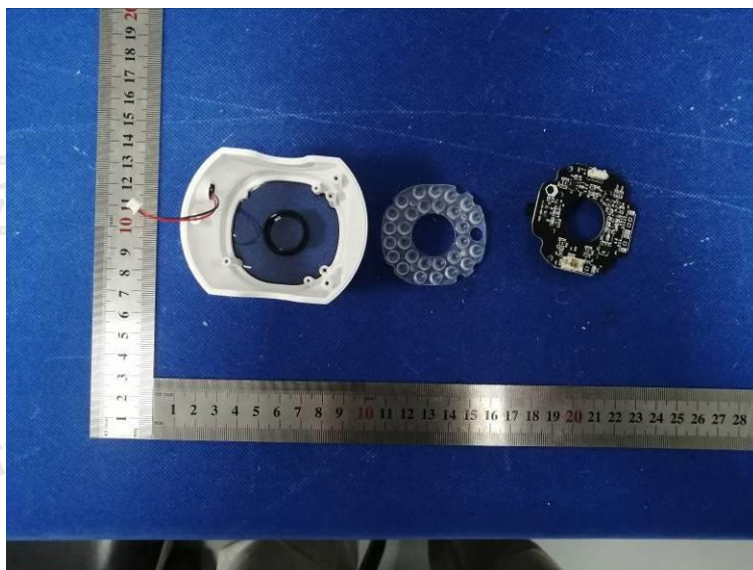
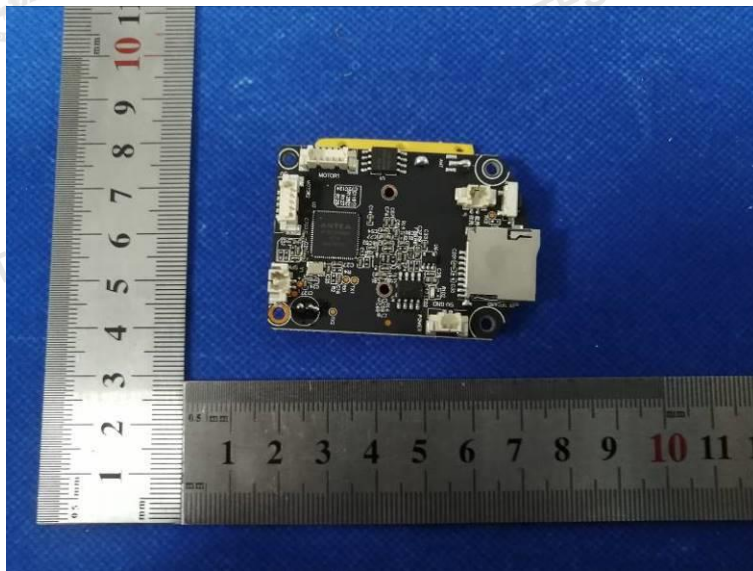
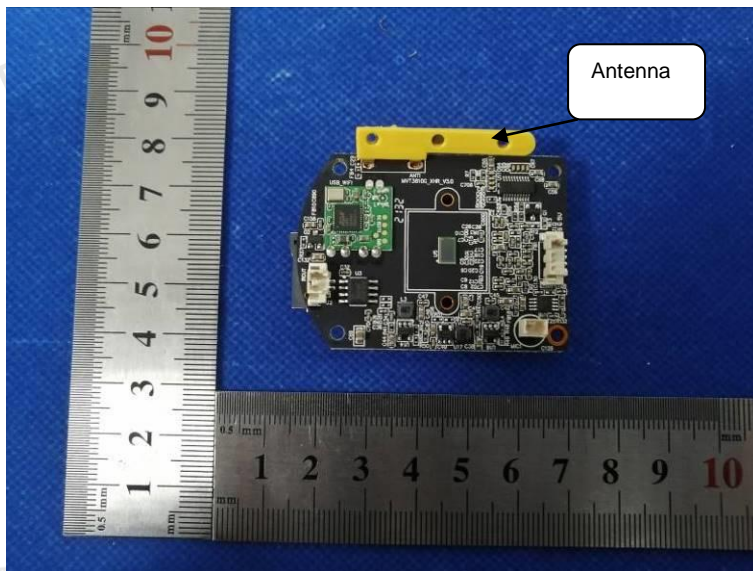
6 Photos of the EUT

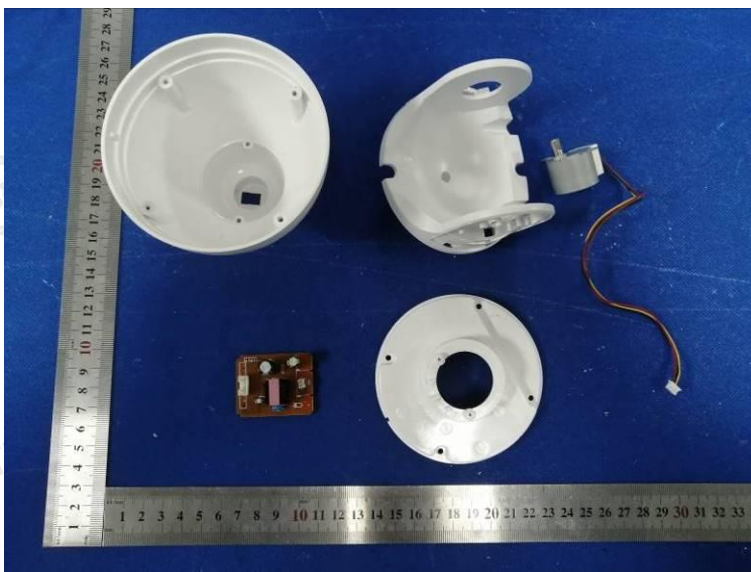
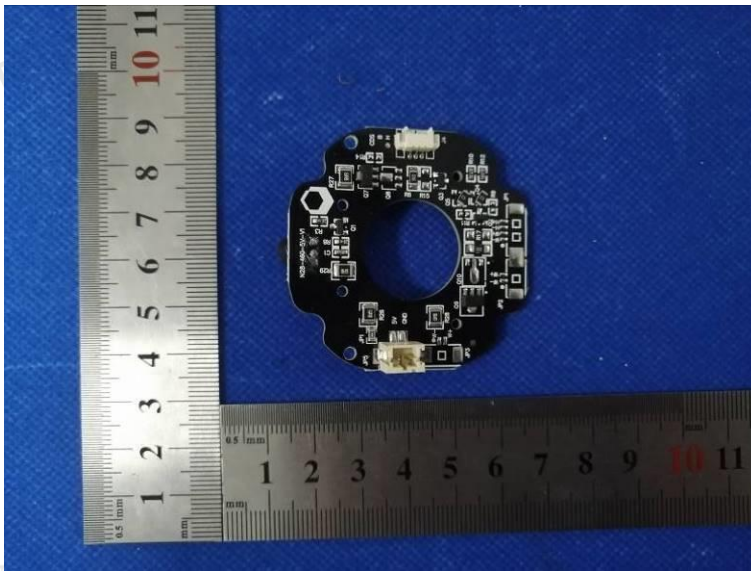


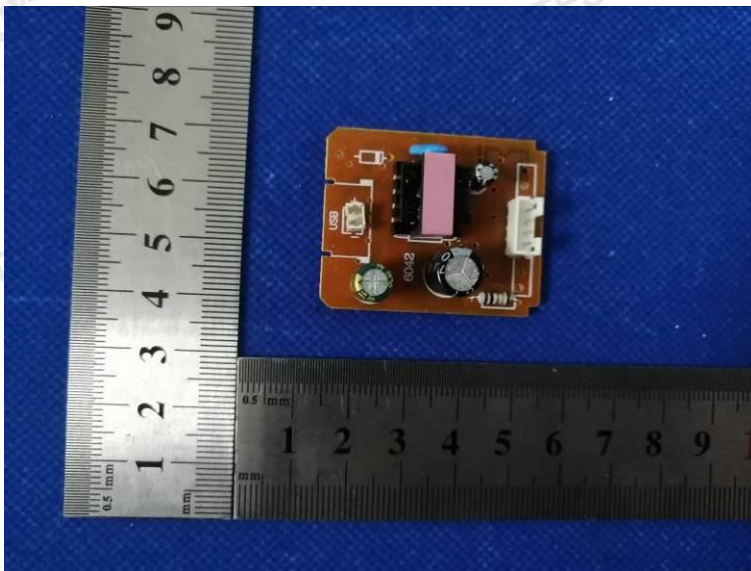
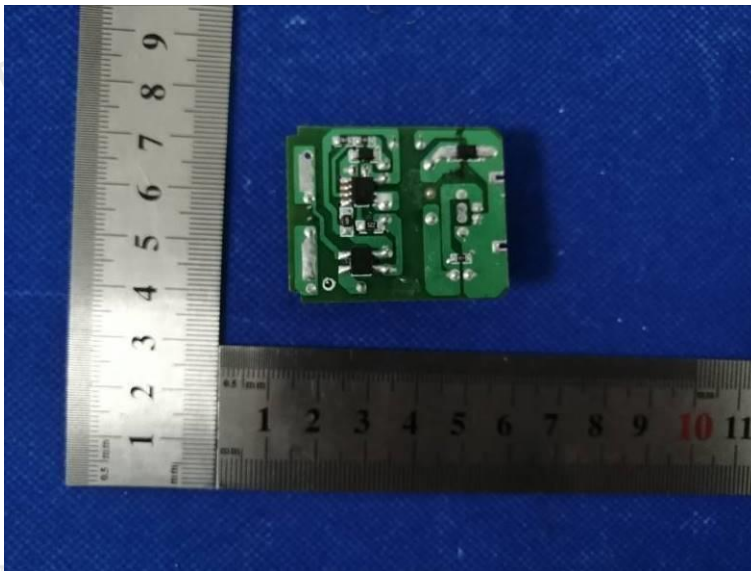












***** End of Report *****