



TV Clear Transmitter 2

Model: TVC2-TX

- EN Quick Guide
- DE Kurzanleitung
- FR Guide rapide
- ES Instrucciones resumidas
- PT Guia rápidos
- NL Beknopte handleiding
- IT Guida rapida
- DA Snabbguide
- SV Bruksanvisning

SENNHEISER

Instruction manuals and product support
 Bedienungsanleitungen und Produktbetreuung
 Manuels d'utilisation et assistance produit
 Manualli d'istruzioni e supporto prodotto
 Bedieningsinstructies en productondersteuning
 Manuais de instruções e assistência ao produto
 Instrukcje obsługi i wsparcie produktowe
 Brugsanvisninger og produkt hjælp

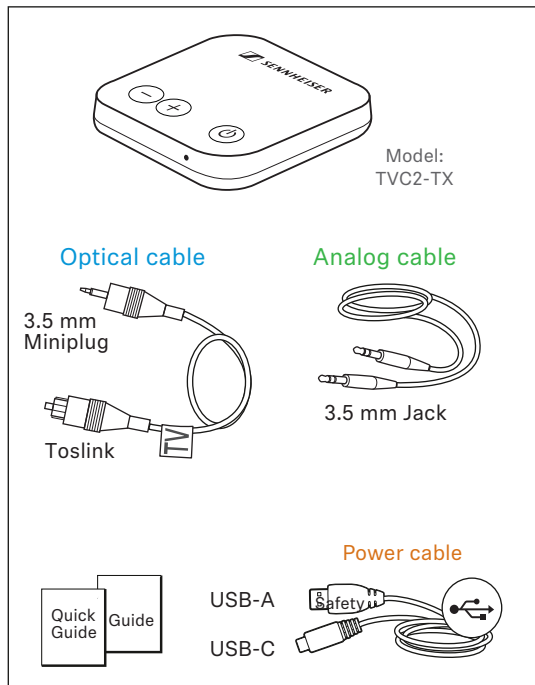
www.sennheiser-hearing.com/tvcleartransmitter2



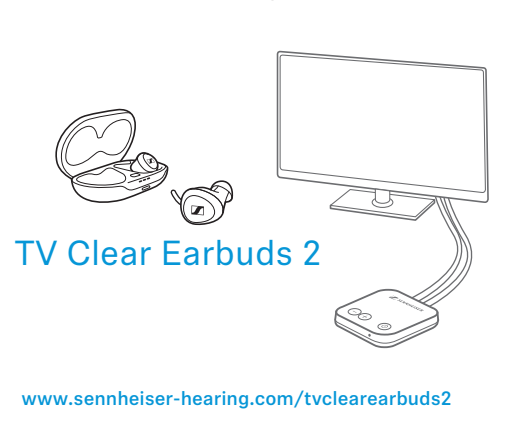
Sonova Consumer Hearing GmbH
 Am Labor 1, 30900 Wedemark, Germany

029-1287-72/V1.0/2023 01 DRAFT

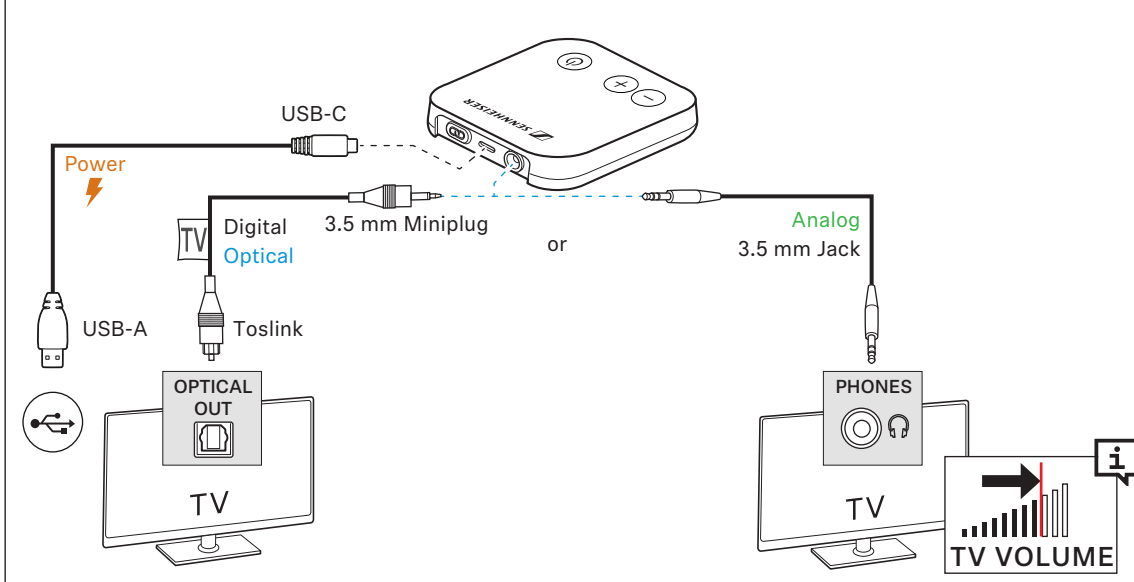
Content | Inhalt | Contenu | Índice| Índice | Inhoud | Contenuto | Indhold | Innehåll



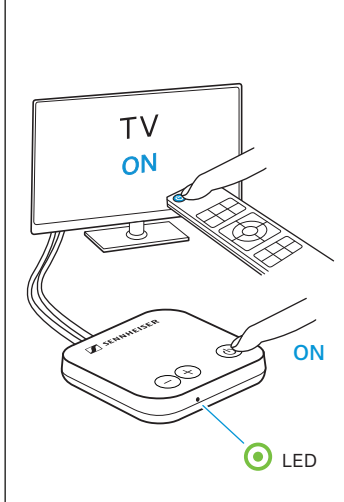
Best TV results | Beste TV-Ergebnisse |
 Meilleurs résultats télévisuels | Los mejores
 resultados de TV | Melhores resultados de TV |
 Beste TV-resultaten | I migliori risultati TV |
 Bedste tv-resultater | Optimala TV-resultat



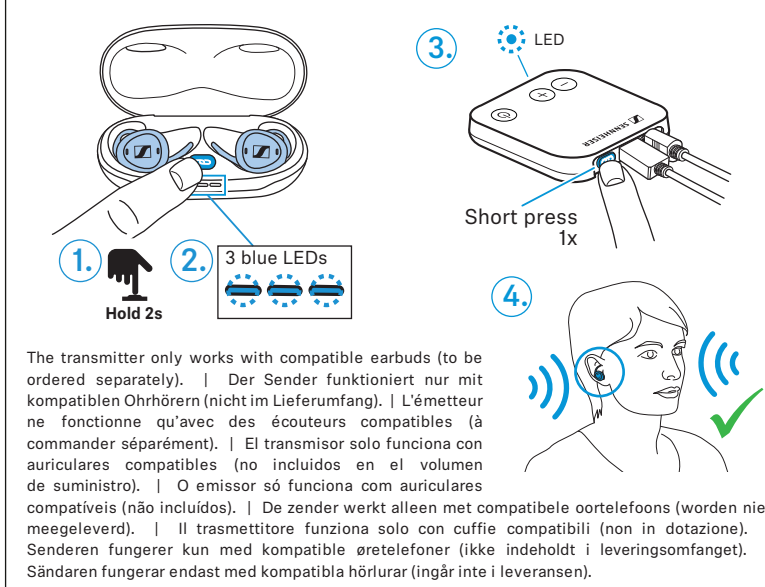
1 Connecting the TV | TV verbinden | Raccorder la télé | Conectar TV | Conectar a TV | TV verbinden | Collegare la TV | Forbindelse af tv | Ansluta TV



2 Switching on | Einschalten | Allumer | Encender | Ligar | Inschakelen | Accendere | Aktivierung | Starta



3 Pairing | Koppeln | Appairer | Sincronizar | Emparelhar | Koppelen | Accoppiare | Parring | Parkoppla



Print specs:	Paper grammage: 70 gsm	Guide delivery: Folded
	Print colours: CMYK 4/4C	Paper quality: woodfree
	Open size: 600 x 190 mm	Close size: 75 x 95 mm
	Release date: April 22,	



TV Clear Transmitter 2

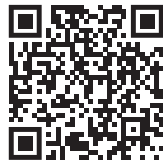
Model: TVC2-TX

- FI Pikaohje
- EL Συνοπτικές οδηγίες
- PL Krótka instrukcja obsługi
- TR Hızlı Kılavuz
- RU Краткая инструкция
- JA 簡易説明書
- ZH-HANS 快速指南
- ZH-HANT 快速使用指南
- KO 빠른 안내서
- ID Panduan Ringkas

SENNHEISER

Käyttöohjeet ja tuoteneuvonta
 Οδηγίες λειτουργίας και υποστήριξη προϊόντος
 Instrukcje obsługi i pomoc produktowa
 Kullanım kılavuzu ve ürün desteği
 Инструкции по эксплуатации и поддержка продукта
 取扱説明書と製品サポート
 操作说明与产品支持
 操作說明與產品支援
 사용 설명서 및 제품 지원
 Petunjuk penggunaan dan dukungan produk

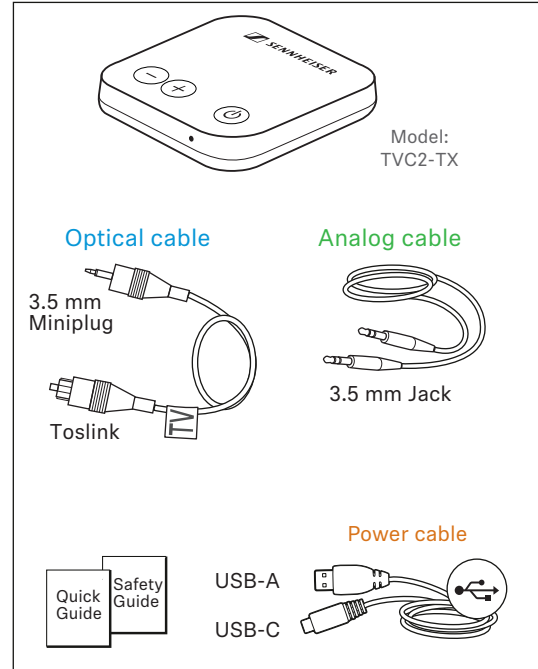
www.sennheiser-hearing.com/tvcleartransmitter2



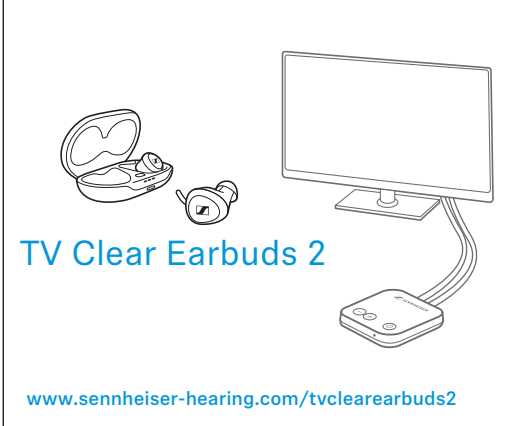
Sonova Consumer Hearing GmbH
 Am Labor 1, 30900 Wedemark, Germany

029-1287-72/V1.0/2023 01

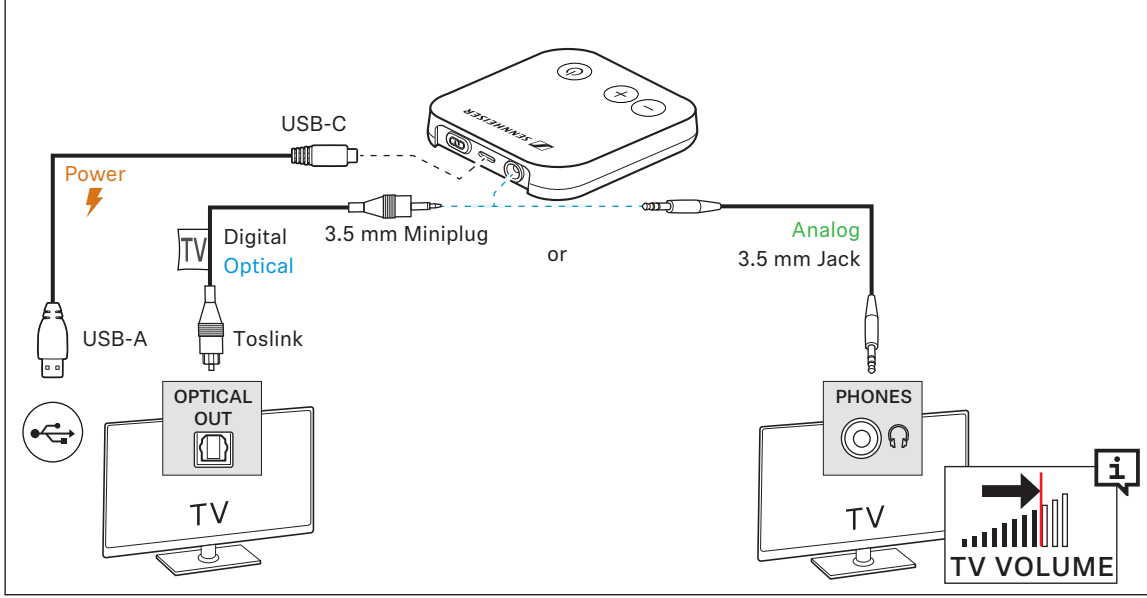
Sisältö | Περιεχόμενα | Zawartość | İçindekiler | Оглавление | 目次 | 目录 | 目錄 | 구성품 | Daftar Isi



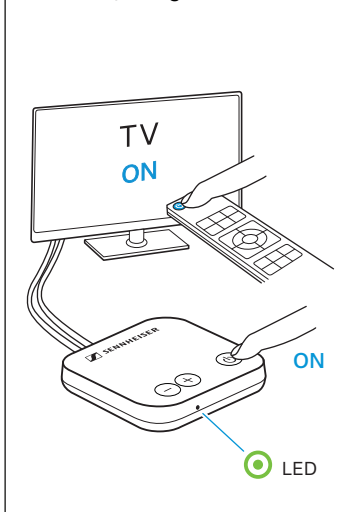
Parhaat TV-tulokset | Βέλτιστα αποτελέσματα στην τηλεόραση | Najlepsze efekty w przyrządku rożarczenia z TV | En iyi TV sonuçları | Лучшее качество ТВ | 最佳电视效果 | 最佳電視效果 | 最佳電視效果 | 최상의 TV 결과 | Hasil TV terbaik



1 TV:n liittäminen | Σύνδεση τηλεόρασης | Łączenie z TV | TV'nin bağlanması | Подключение ТВ | TV를 接続 | 连接电视 | 連接電視 | TV 연결하기 | Koneksi TV



2 Päällekytkentä | Ενεργοποίηση | Włączanie | Açma | ключение | オンにする | 启动 | 啟動 | 켜기 | Mengaktifkan



3 Pariliitoksen muodostaminen | Σύζευξη | Parowanie | Eşleştirme | Сопряжение |ペアリング | 配对 | 配對 | 페어링하기 | Menyandingkankan

