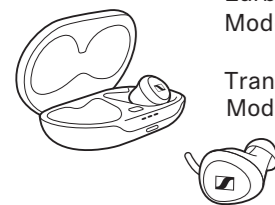




TV Clear Set 2

Model: TVC2
 Earbuds
 Model: TVC2-EB
 TVC2-C
 Transmitter
 Model: TVC2-TX



EN Quick Guide
 DE Kurzanleitung
 FR Guide rapide
 ES Instrucciones resumidas
 PT Guia rápidos
 NL Beknopte handleiding
 IT Guida rapida
 DA Snabbguide
 SV Bruksanvisning

SENNHEISER

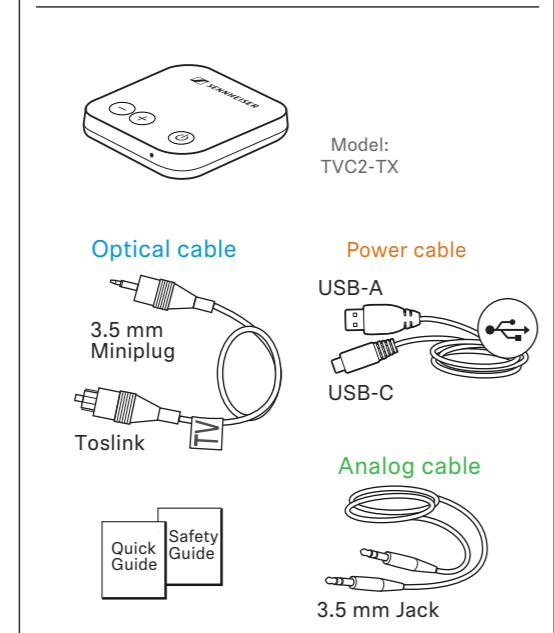
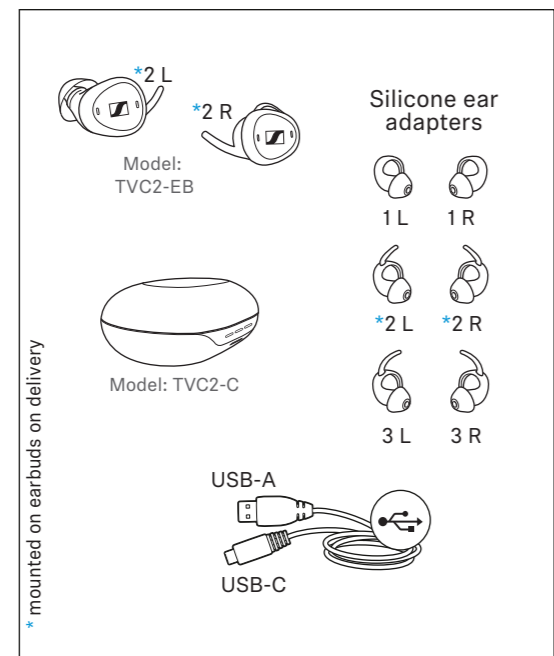
Instruction manuals and product support
 Bedienungsanleitungen und Produktbetreuung
 Manuels d'utilisation et assistance produit
 Instrucciones de uso y soporte del producto
 Manuali d'istruzioni e supporto prodotto
 Bedieningsinstructies en productondersteuning
 Manuais de instruções e assistência ao produto
 Instrukcje obsługi i wsparcie produktowe
 Brugsanvisninger og produkt Hjælp

www.sennheiser-hearing.com/tvclearset2

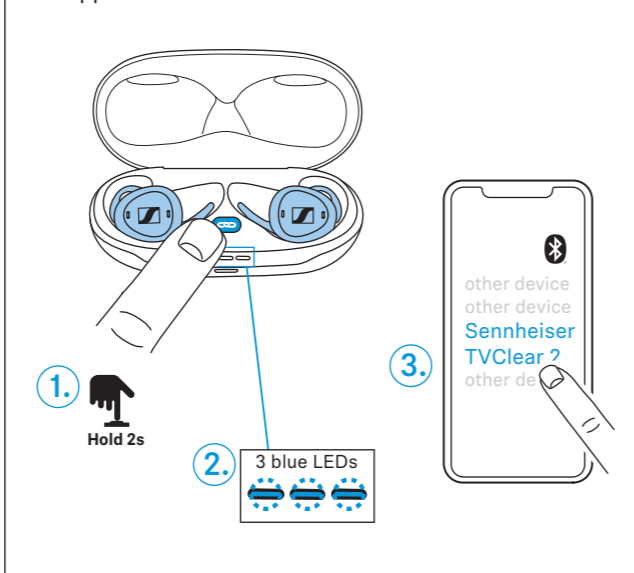


Sonova Consumer Hearing GmbH
 Am Labor 1, 30900 Wedemark, Germany
 029-1286-72/V1.0/2023 01

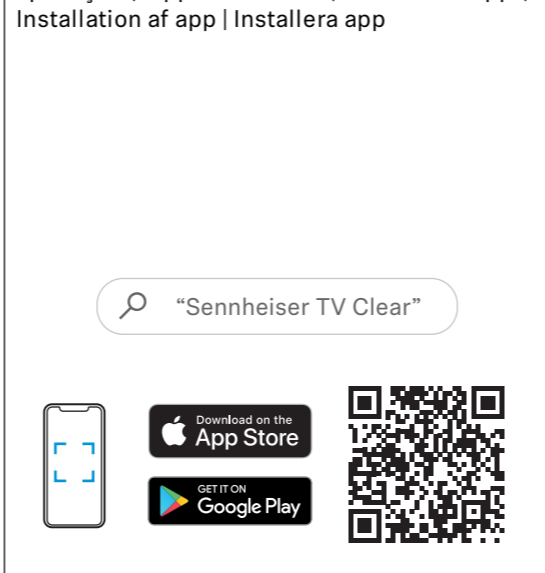
Package contents | Inhalt | Contenu | Índice | Índice | Inhoud | Contenuto | Indhold | Innehåll



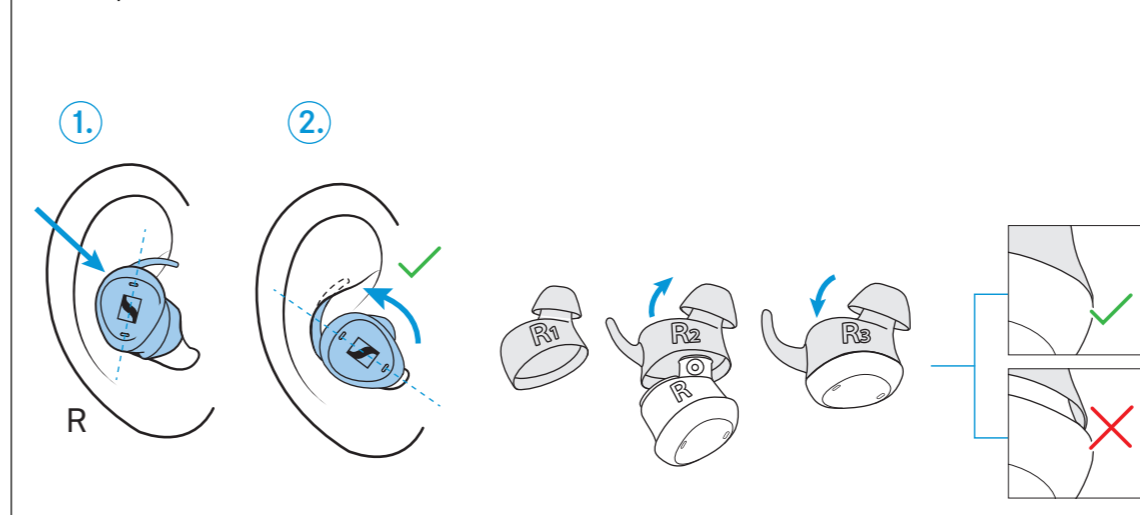
1 Pairing | Koppeln | Appairer | Sincronizar | Emparelhar | Koppelen | Accoppiare | Parring | Parkoppla



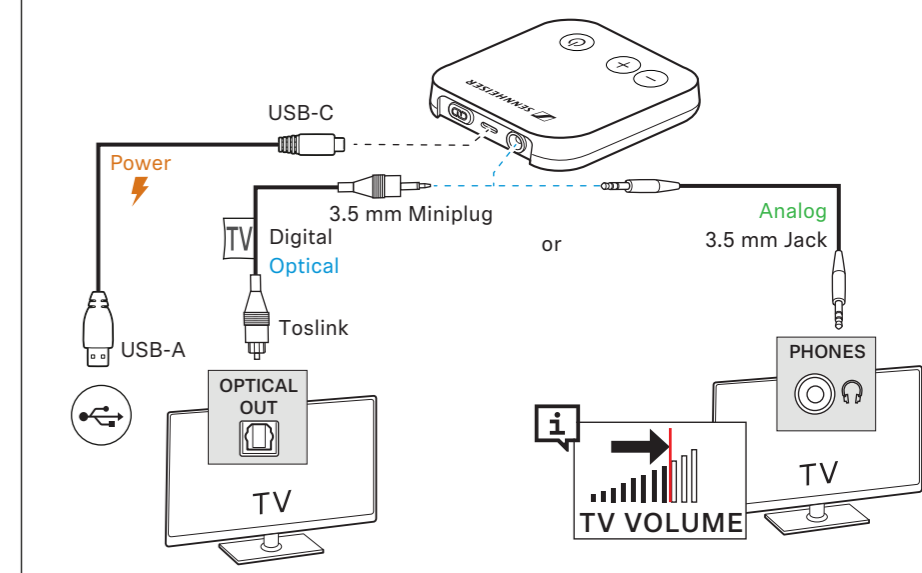
2 Installing the app | App installieren | Installer l'appli | Instalar aplicación | Instalar a aplicação | App installeren | Installare l'app | Installation af app | Installera app



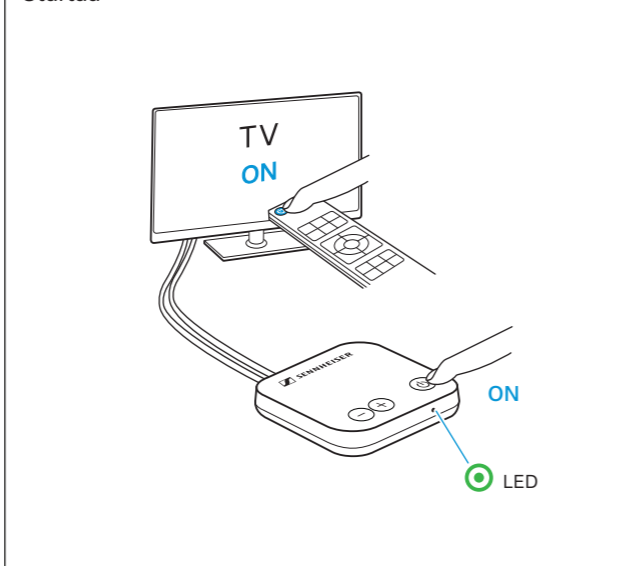
3 Inserting the earbuds or selecting the ear adapters | Einsetzen oder Ohradapter wählen | Insérer les écouteurs ou sélectionner les embouts d'oreille | Insertar o seleccionar adaptadores para los oídos | Colocar ou seleccionar os adaptadores auriculares | Plaatsen of ooradapter selecteren | Inserire o scegliere i cuscinetti auricolari | Isætning eller valg af øreadapter | Sätta in eller välja öronadapter



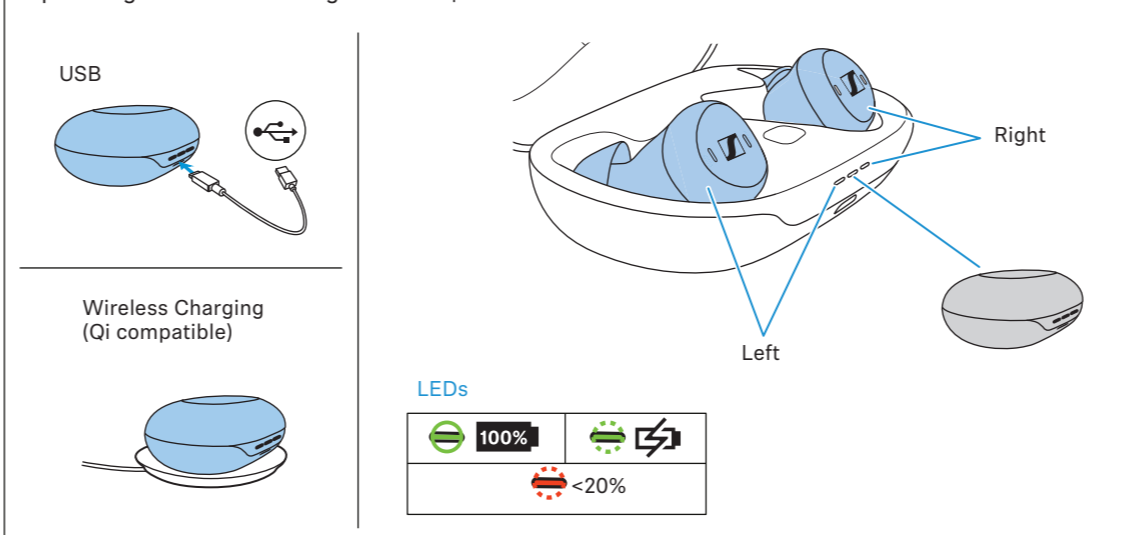
4 Connecting the TV | TV verbinden | Raccorder la télé | Conectar TV | Conectar a TV | TV verbinden | Collegare la TV | Forbindelse af tv | Ansluta TV



5 Switching on | Einschalten | Allumer | Encender | Ligar | Inschakelen | Accendere | Aktivering | Startaa



6 Charging the earbuds and the charging case | Ohrhörer und Ladebox laden | Charger les écouteurs et le boîtier de chargement | Cargar auriculares y caja de carga | Carregar os auriculares e a caixa de carregamento | Oortelefoon en laadbox laden | Caricare le microcuffie e la stazione di carica | Opladning af øretelefoner og ladeboks | Ladda hörlurar och laddare



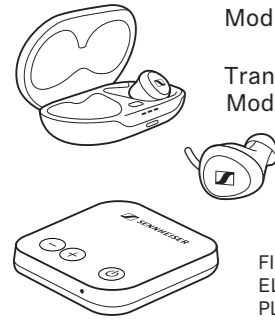
7 Operation | Bedienung | Utilisation | Manejo | Operação | Bedienung | Utilizzo | Betjening | Användning

Volume		TV+ Speech Clarity		Pause	Ambient Awareness	ringing
Left	Right	Left	Right	Left	Right	Left or Right
Short Press 1x	Short Press 1x	Hold 2s	Hold 2s	Tap 2x	Tap 2x	Short Press 1x
-	+	5 max 4 3 2 1 off	5 max 4 3 2 1 off	▶	ON OFF	📞



TV Clear Set 2

Model: TVC2
Earbuds
Model: TVC2-EB
TVC2-C
Transmitter
Model: TVC2-TX



FI Pikaohje
EL Συνοπτικές οδηγίες
PL Krótka instrukcja obsługi
TR Hızlı Kılavuz
RU Краткая инструкция
JA 簡易説明書
ZH-HANS 快速指南
ZH-HANT 快速使用指南
KO 빠른 안내서
ID Panduan Ringkas

SENNHEISER

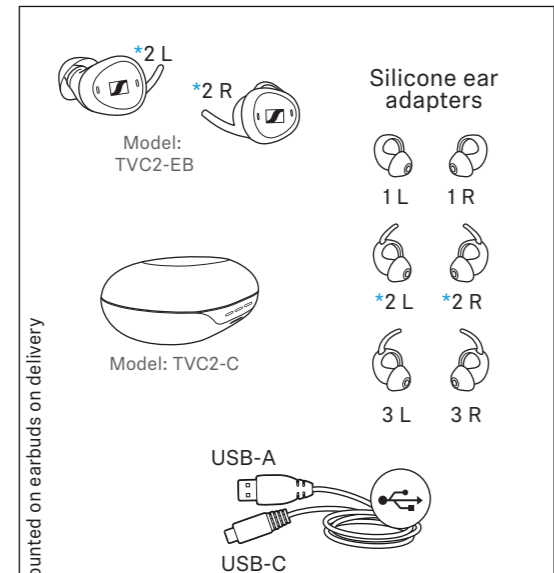
Käyttöohjeet ja tuoteneuvonta
Οδηγίες λειτουργίας και υποστήριξη προϊόντος
Instrukcje obsługi i pomoc produktowa
Kullanım kılavuzu ve ürün desteği
Инструкции по эксплуатации и поддержка продукта
取扱説明書と製品サポート
操作说明与产品支持
操作說明與產品支援
사용 설명서 및 제품 지원
Petunjuk penggunaan dan dukungan produk

www.sennheiser-hearing.com/tvclearset2

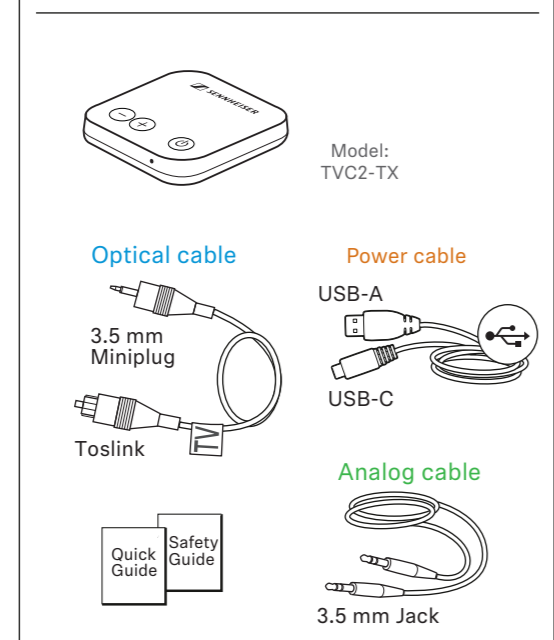


Sonova Consumer Hearing GmbH
Am Labor 1, 30900 Wedemark, Germany
029-1286-72/V1.0/2023 01

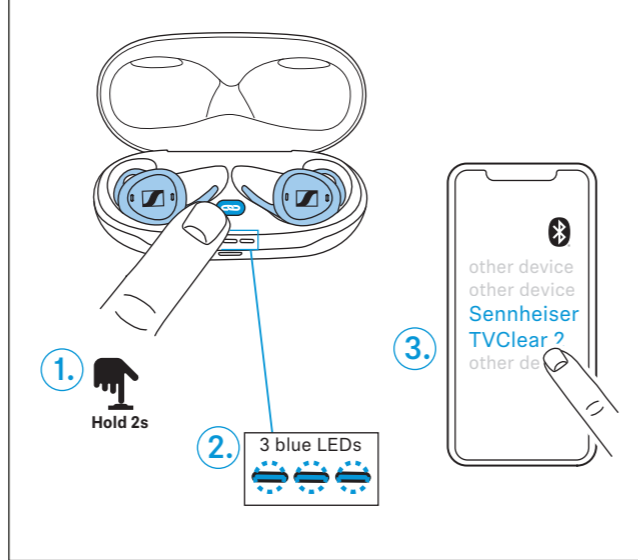
Sisältö | Περιεχόμενα | Zawartość | İçindekiler |
Оглавление | 目次 | 目录 | 目錄 | 구성품 |
Daftar Isi



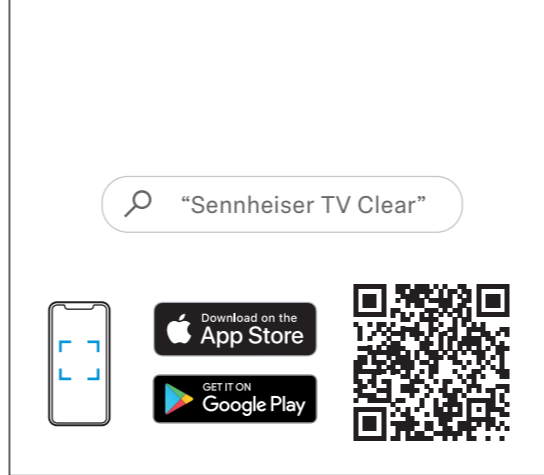
* mounted on earbuds on delivery



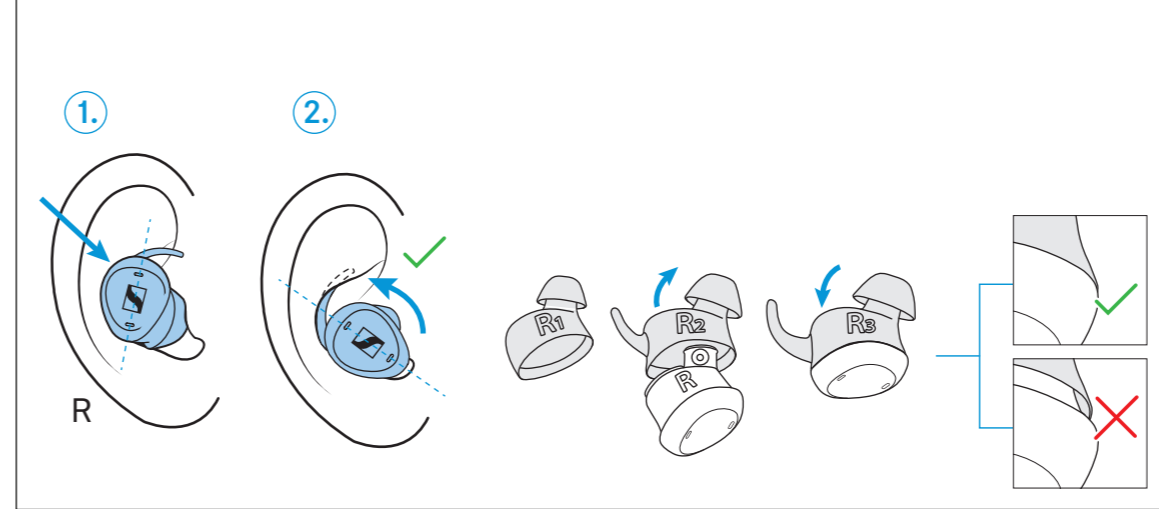
1 Pariliitoksen muodostaminen | Συζευξη | Parowanie |
Eşleştirme | Сопряжение | 페어링 | 配对 |
配对 | 페어링하기 | Menyandingkan



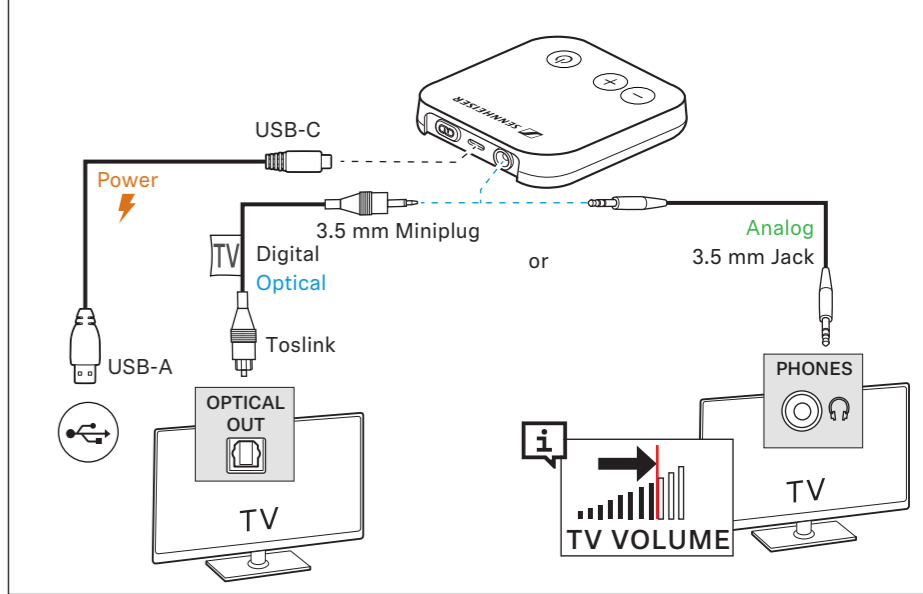
2 App installieren | Sovelluksen asennus |
Εγκατάσταση εφαρμογής | Instalacja
aplikacji | Uygulamanın kurulması | Установка
приложения | アプリをインストール |
安装应用程序 | 安裝應用程式 | 앱 설치하기 |
Menginstal aplikasi



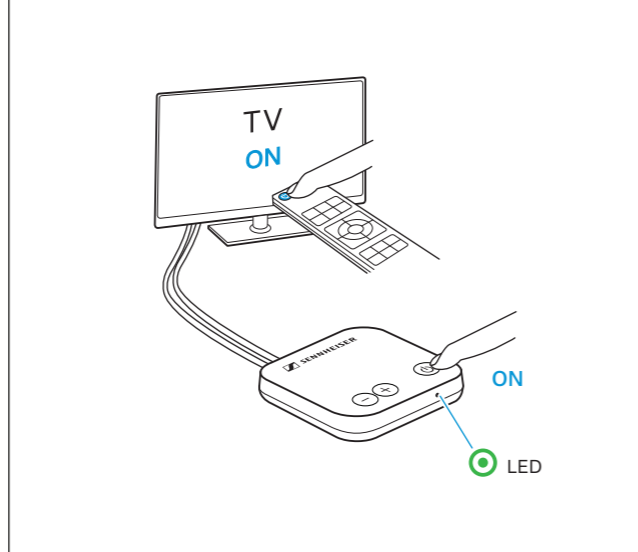
3 Korvaan asettaminen tai korva-adapterin valitsemisen | Τοποθέτηση ή επιλογή μαξιλαριών
αυτιού | Włożenie do ucha lub wybranie wkładek dousznych | Kulaklık adaptörü takın veya seçin |
Надевание или выбор переходника наушников | セットするかイヤードアプターを選択します |
插入或选择耳塞套 | 插入或選擇耳塞 | 귀에 이어폰 삽입 또는 이어 어댑터선택하기 | Masukkan atau pilih
adaptor telinga



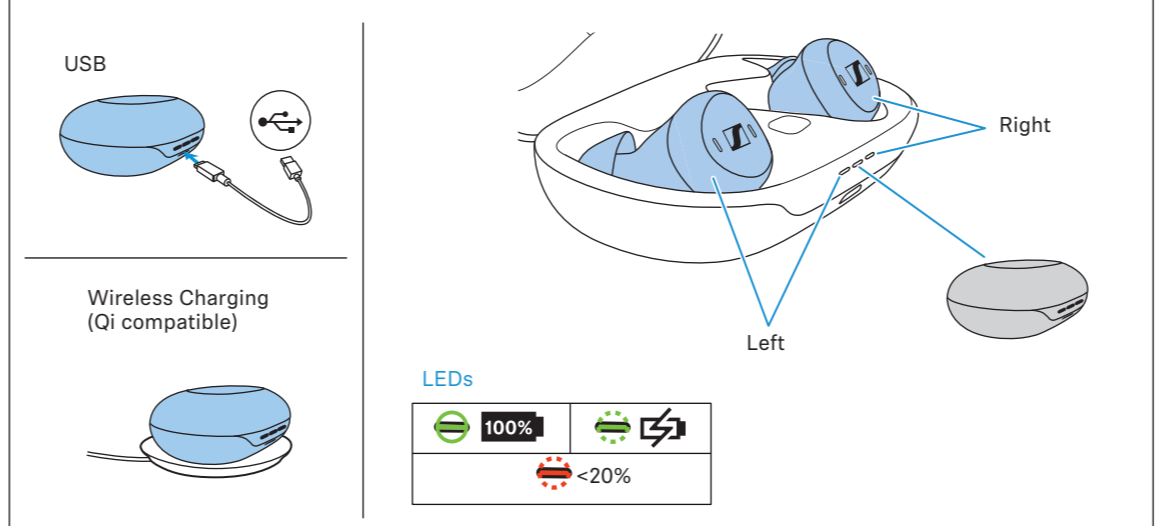
4 TV:n liittäminen | Σύνδεση τηλεόρασης | Łączenie z TV | TV'nin bağlanması |
Подключение ТВ | TV를 接続 | 连接电视 | 连接电视 | TV 연결하기 | Koneksi TV



5 Päälekytkentä | Ενεργοποίηση | Włączenie | Açma |
Включение | オンにする | 启动 | 啟動 | 켜기 |
Mengaktifkan



6 Nappikuulokkeiden ja latausrasian lataaminen | Φόρτιση ακουστικών και θήκης φόρτισης |
Ładowanie słuchawek i ładowarki | Kulaklıkları ve şarj kutusunu şarj edin | Зарядка наушников и
бокса для зарядки | イヤホンと充電ボックスを充電する | 耳机和充电盒充电 | 耳機和充電盒充電 |
이어폰과 충전 상자 충전하기 | Isi daya earphone dan kotak pengisi daya



7 Käyttö | Χειρισμός | Obsługa | Kullanım | Управление | 操作 | 操作 | 操作 | 조작 | Kontrol

Volume		TV+ Speech Clarity		Pause	Ambient Awareness	ringing
Left	Right	Left	Right	Left	Right	Left or Right
Short Press 1x	Short Press 1x	Hold 2s	Hold 2s	Tap 2x	Tap 2x	Short Press 1x
-	+	5 max 4 3 2 1 off	5 max 4 3 2 1 off	▶	ON OFF	📞

Specifications

“TV Clear Earbuds 2”

Model: TVC2-EB, TVC2-C

Wearing style	True Wireless stereo earbuds
Ear coupling	ear-canal
Frequency response	20 Hz to 20 kHz
Transducer principle	dynamic
Transducer size	6 mm
Sound pressure level (SPL)	100.5 dB (1 kHz/1 mW)
THD (1 kHz, 94 dB SPL)	≤ 0.5 % (1 kHz, 94 dB)
Noise cancellation	passive, with ambient awareness mode
Microphone principle	Digital MEMS
Microphone frequency response	100 Hz to 10 kHz
Microphone pick-up pattern (speech and ambient awareness mode)	1 microphone per earbud for ambient awareness mode 2 beamforming microphones in the main earbud during the call
Rechargeable batteries	built-in lithium rechargeable batteries, earbuds: 69 mAh charging case: 490 mAh
Charging method via charging case	USB charging via USB-C socket of the charging case: 5 V $\overline{\text{---}}$, max. 0.6 A Qi wireless charging
Operating time	up to 15 hours of streaming with “TV Clear Transmitter 2”; up to 12 hours of streaming with A2DP; 1.5 additional charges through charging case
Charging time of rechargeable batteries	approx. 2 hours for a full charge via USB-C source approx. 3 hours for a full charge via Qi wireless charging approx. 5 minutes for 1 hour of music playback
Temperature range	<i>operation</i> : 5 to +40 °C <i>storage</i> : -20 to +40 °C
Relative air humidity, non-condensing	<i>operation</i> : < 85 % <i>storage</i> : < 90 %

Magnetic field strength	earbuds: 137 mT charging case: 32 mT
Weight	earbuds: approx. 7 g each charging case: approx. 50 g earbuds and charging case: 64 g

Bluetooth

Version	compatible with Bluetooth 4.2, class 1
Transmission frequency	2,400 MHz to 2,483.5 MHz
Modulation	GFSK, $\pi/4$ DQPSK, 8DPSK
Profiles	HFP, AVRCP, A2DP, DID
Output power	10 mW (max)
Codec	SBC
Device name	Sennheiser TVClear 2
Number of active connections	2

Specifications

Transmitter

Model: TVC2-TX

Compatibility	Connect multiple Sennheiser TV Clear 2 devices or other wireless Phonak / Unitron products Up to 15 meters (50 ft) transmission range ^a
Streaming technology	Proprietary technology
Audio quality	Stereo, 120 Hz to 14.7 kHz
Transmission frequency	2400 – 2483.5 MHz, ISM band
RF power	50 mW (max)
Transmission range	up to 15 m (50 ft)
Max. paired devices	Unlimited
Connections	Digital input: 3.5 mm optical mini-plug Supported data streams: PCM, Stereo, Dolby 5.1/7.1 Analog input: 3.5 mm stereo jack
Power supply	USB-C socket (use USB certified supply): 5 V ---, min. 0.5 A
Product dimension	63 x 63 x 12 mm (2.5" x 2.5" x 0.46")
Weight	approx. 34 g
Temperature range	<i>operation:</i> 0 to +40°C (+32°F to +104°F). <i>storage:</i> -20 to +60°C (-4°F to +140°F).
Relative humidity, non condensing	<i>operation:</i> < 90% <i>storage:</i> < 90%

a. The TV-Clear Transmitter 2 is using a proprietary transmission technology optimized for low latency and power consumptions. Therefore it is not compatible to standard Bluetooth headsets.

Find a list of compatible Sennheiser headsets here:

www.sennheister-hearing.com/tvcleartransmitter2