

Print specs:

Paper grammage: 120 gsm outside	Guide delivery: booklet, landscape, 2x wire stitching
Paper grammage: 80 gsm inside	
Print colours: 4 C (CMYK)	Paper quality: Art glossy varnish
Open size: 130 x 160 mm	Close size: 130 x 80 mm
Release date: 15 Nov. 2021 (PMP)	

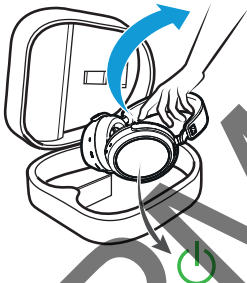


MOMENTUM 4

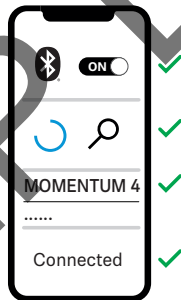
Model: M4AEBT

SENNHEISER

1.



2.













3.

 **Smart Control**



 → page 12

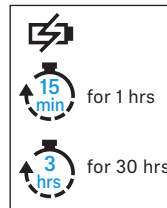
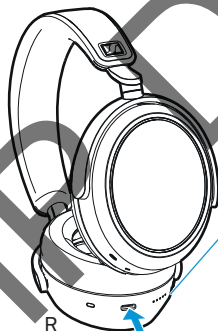
EN	Quick Guide
DE	Kurzanleitung
FR	Guide rapide
ES	Instrucciones resumidas
PT	Guia rápidos
NL	Beknopte handleiding
IT	Guida rapida
DA	Kort vejledning
SV	Snabbguide
FI	Pikaohje
EL	Σύντομες οδηγίες
PL	Krótkie instrukcje obsługi
TR	Kısa Kılavuz
RU	Краткая инструкция
JA	クイックガイド
ZH	快速指南
TW	快速指南
KO	빠른 안내서
ID	Panduan ringkas

	Charging	3
	Power on / Power off	4
	Pairing	5
	Music control	6
	Call control	7
	Active noise cancellation	8
	Transparent Hearing	9
	Voice Assistant	10
	Package contents	11
	Troubleshooting	12



Charging

DE	Laden
FR	Charger
ES	Cargar
PT	Carregar
NL	Opladen
IT	Caricare
DA	Opladning
SV	Laddning
FI	Lataaminen
EL	Φόρτιση
PL	Ładowanie
TR	Şarj etme
RU	Зарядка
JA	充電
ZH	充电
TW	充電
KO	충전
ID	Mengisi daya



USB-C

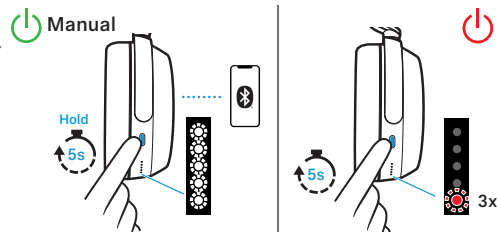
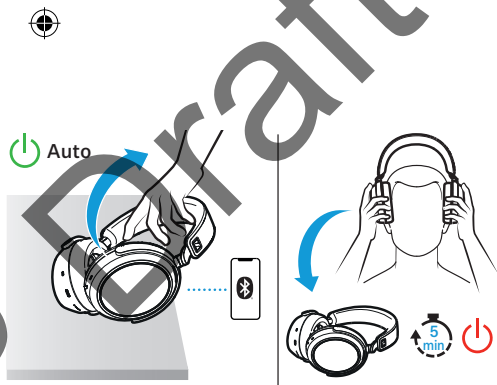
USB-A





Power on / Power off

DE	Einschalten/Ausschalten
FR	Allumer / éteindre
ES	Encender / Apagar
PT	Ligar/desligar
NL	Inschakelen/uitschakelen
IT	Accendere/Spagnere
DA	Tænd/sluk
SV	Sätta på/stänga av
FI	Virran kytkeminen ja katkaiseminen
EL	Ενεργοποίηση / απενεργοποίηση
PL	Włączanie / wyłączenie
TR	Açma/Kapatma
RU	Включение/выключение
JA	スイッチのオン/オフ
ZH	接通/关闭
TW	接通 / 關閉
KO	켜기/끄기
ID	Mengaktifkan/menonaktifkan

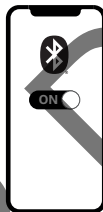




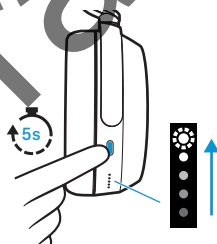
Pairing

DE	Koppeln
FR	Appairer
ES	Sincronizar
PT	Emparelhar
NL	Koppelen
IT	Accoppiare
DA	Parring
SV	Parkoppla
FI	Pariliitoksen muodostaminen
EL	Ζεύξη
PL	Parowanie
TR	Eşleştirme
RU	Сопряжение
JA	連結
ZH	配对
TW	配對
KO	페어링
ID	Menyandingkan

1



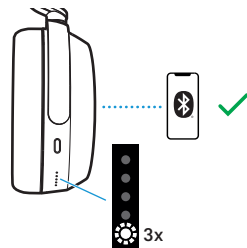
2



3



4

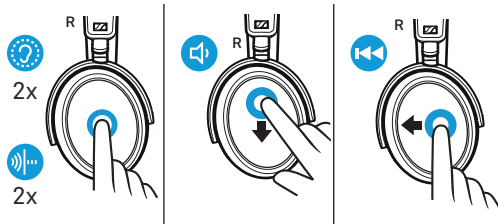
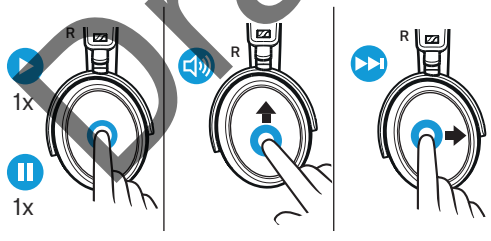


5



Music control

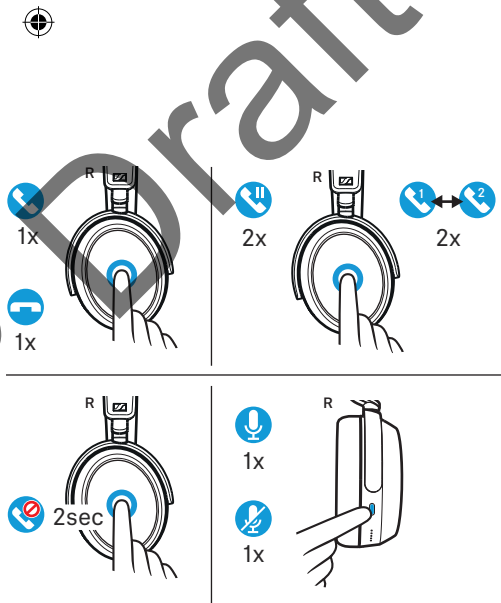
DE	Musiksteuerung
FR	Contrôle de la musique
ES	Control de música
PT	Controlo/Controle da música
NL	Muziekbediening
IT	Gestione della musica
DA	Musikstyring
SV	Musikstyrning
FI	Musiikin toiston ohjaus
EL	Χειρισμός αναπαραγωγής μουσικής
PL	Sterowanie muzyką
TR	Müzik kumandası
RU	Управление воспроизведением музыки
JA	音楽制御
ZH	音乐控制器
TW	音樂控制器
KO	음악 제어
ID	Pengaturan musik





Call control

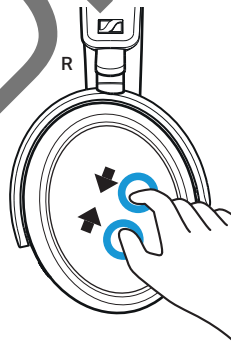
DE	Anrufsteuerung
FR	Contrôle des appels
ES	Control de llamadas
PT	Controlo/Controle de chamadas
NL	Belbesturing
IT	Gestione delle chiamate
DA	Opkaldsstyring
SV	Samtalsstyrning
FI	Puhelujen ohjaus
EL	Χειρισμό κλήσεων
PL	Sterowanie rozmowami telefonicznymi
TR	Çağrı kontrolü
RU	Управление вызовами
JA	電話制御
ZH	来电控制器
TW	來電控制器
KO	통화 제어
ID	Pengaturan panggilan





Active noise cancelling

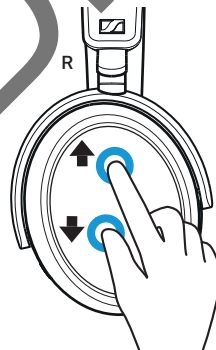
DE	Aktive Geräuschunterdrückung
FR	Annulation active du bruit
ES	Atenuación activa del ruido
PT	Controlo/Controle ativo de ruído
NL	Actieve ruisonderdrukking
IT	Soppressione attiva dei rumori
DA	Aktiv støjundertrykkelse
SV	Aktiv brusreducering
FI	Aktiivinen melunvaimennus
EL	Ενεργή καταστολή θορύβου
PL	Aktywne tłumienie hałasu
TR	Etkin Gürültü Bastırma
RU	Система активного шумоподавления
JA	アクティブノイズキャンセリング
ZH	主动降噪
TW	主動降噪
KO	능동 소음 억제
ID	Peredaman kebisingan aktif





Transparent Hearing

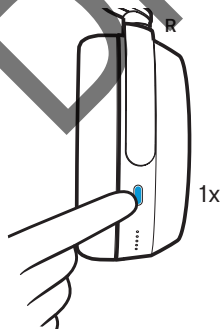
DE	Hören von Umgebungsgeräuschen
FR	Écouter les bruits ambiants
ES	Escuchar el ruido ambiental
PT	Escutar ruídos externos
NL	Horen van omgevingsgeluiden
IT	Ascolto di rumori ambientali
DA	Lyd fra omgivelserstøj
SV	Lyssna på bakgrundsljud
FI	Ympäristön äänen kuuluuus
EL	Ακρόαση θορύβων περιβάλλοντος
PL	Słyszenie dźwięków z otoczenia
TR	Çevre sesleriñi dinleyin
RU	Пропускание шумов окружающей среды
JA	周辺ノイズを聞きます
ZH	环境噪音控制
TW	控制環境噪音
KO	주변 소리 듣기
ID	Mendengarkan suara di sekitar





Voice assistant

DE	Sprachassistent
FR	Assistant vocal
ES	Asistente personal
PT	Assistente de voz
NL	Spraakassistent
IT	Assistente vocale
DA	Taleassistent
SV	Röstassistent
FI	Puheavustaja
EL	Φωνητικός βοηθός
PL	Asystent głosowy
TR	Sesli asistan
RU	Голосовой помощник
JA	言語アシスト
ZH	语音助手
TW	語音助手
KO	음성 어시스턴트
ID	Bantuan bahasa

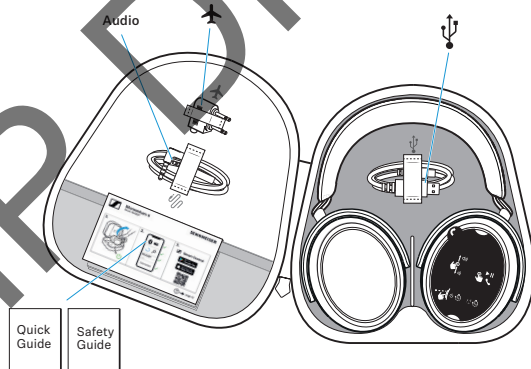


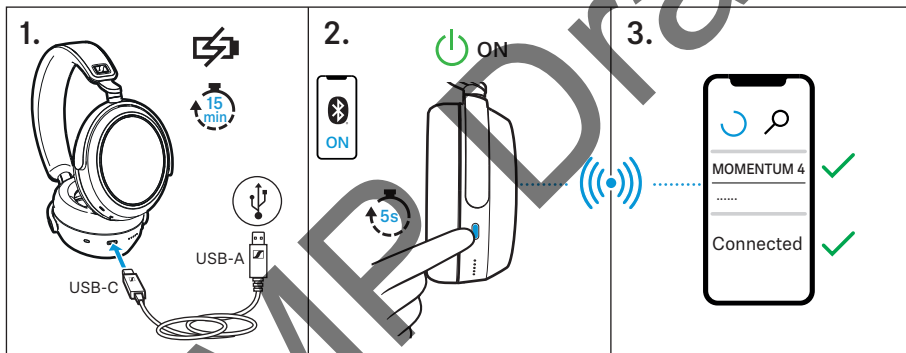
Siri, Alexa,
Google Assistant, ...



Package contents

DE	Lieferumfang
FR	Contenu
ES	Volumen de suministro
PT	Material fornecido
NL	Omvang levering
IT	In dotazione
DA	Leveringsomfang
SV	Leveransomfattning
FI	Toimitussisältö
EL	Περιεχόμενα συσκευασίας
PL	Zakres dostawy
TR	Teslimat kapsamı
RU	Комплект поставки
JA	同梱されているもの
ZH	供货范围
TW	供貨範圍
KO	구성품
ID	Isi kemasan





Sennheiser Consumer Audio GmbH
 Am Labor 1, 30900 Wedemark, Germany
www.sennheiser-hearing.com

11/21, 595515/PMP



Manual and support

www.sennheiser.com/download