



111 Deerwood Road, Suite 200,
San Ramon, CA, 94583, USA

Osprey Electronics Hotspot G1

December 17, 2021

Product Overview

The Helium Hotspot is a combination LongFi wireless router and Helium Blockchain miner built and distributed by Helium, Inc. It creates a long-range network for routing packets from Helium LongFi-enabled devices and performs ongoing mining duties to secure the Helium Network. The "Helium Hotspot" is the name of the Hotspot designed, manufactured, and distributed by Helium, Inc. Developers can use the information provided here to build other "Hotspot" variants that conform to the published network specifications.



Table of Contents

Product Overview	1
Lorem ipsum	1
Lorem ipsum	1
Dolor sit	1
Table of Contents	2
Detailed Description	3
Electrical Specification	4
Interface Instruction	6

Interface Instruction

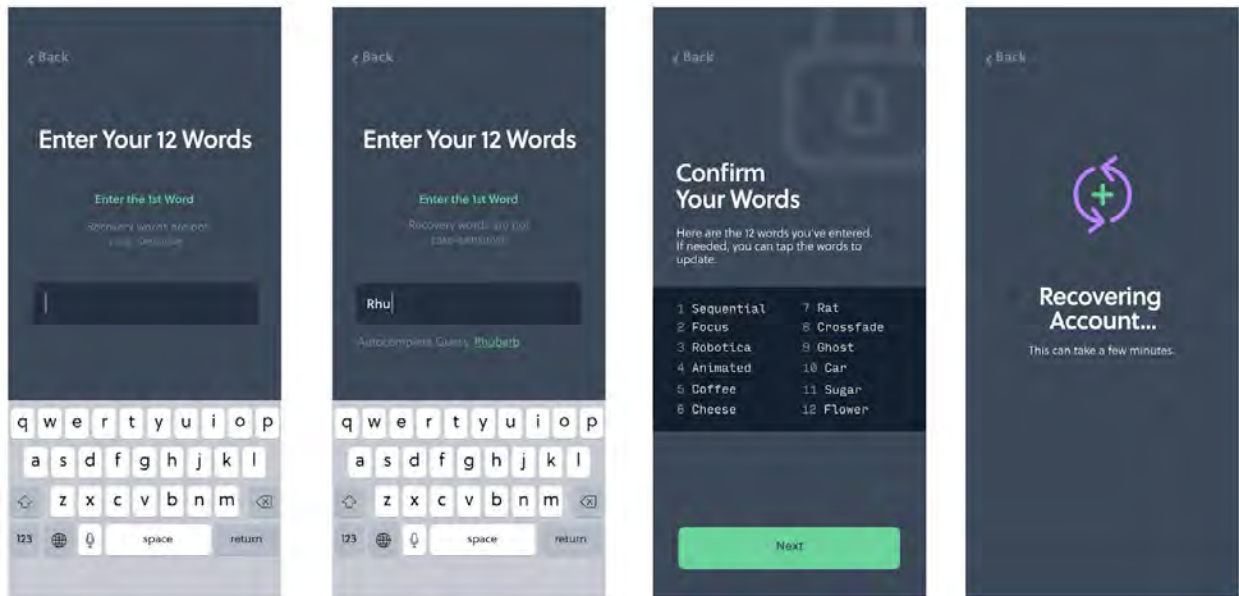
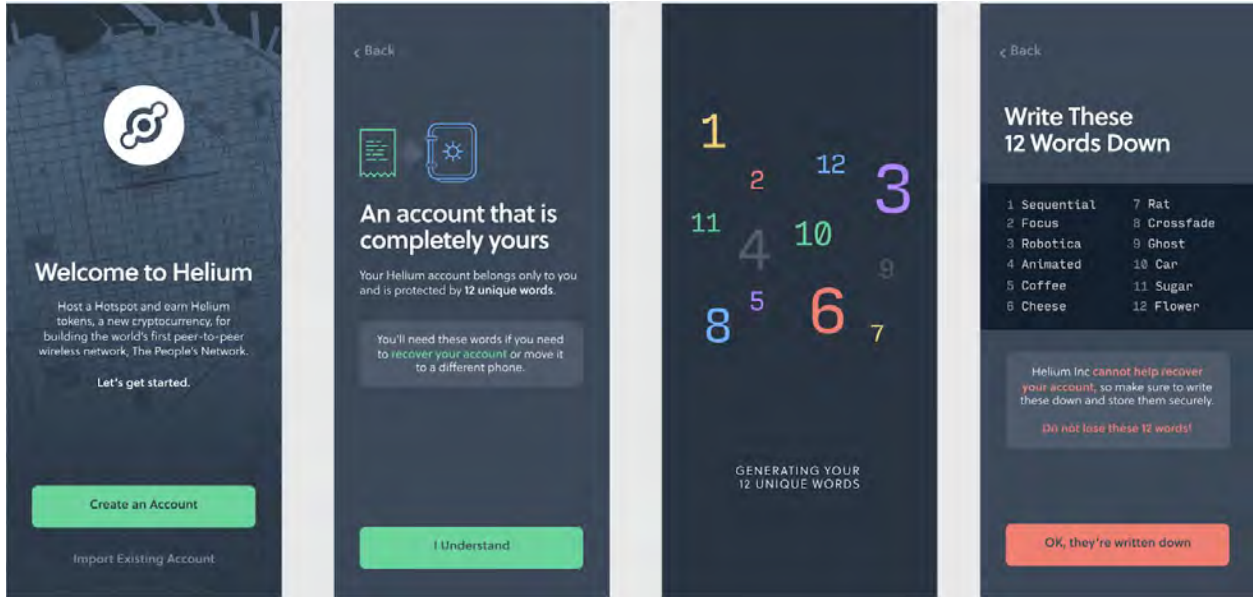
We've designed the app to be pretty intuitive when on-boarding a new Hotspot, but sometimes a little additional information can help clear up any lingering questions about what to do next.

Step 1: Download the app:

- iOS <https://apps.apple.com/app/id1450463605>
- Android: <https://play.google.com/store/apps/details?id=com.helium.wallet>

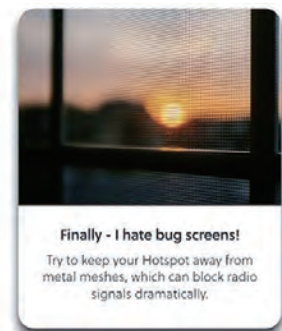
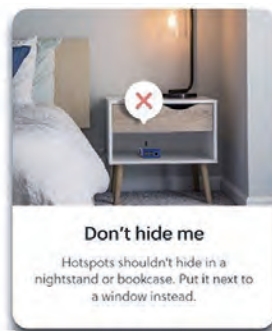
Step 2: Sign in or Create Account:

- Don't forget to write down your 12 word seed phrase, and keep them safe!!



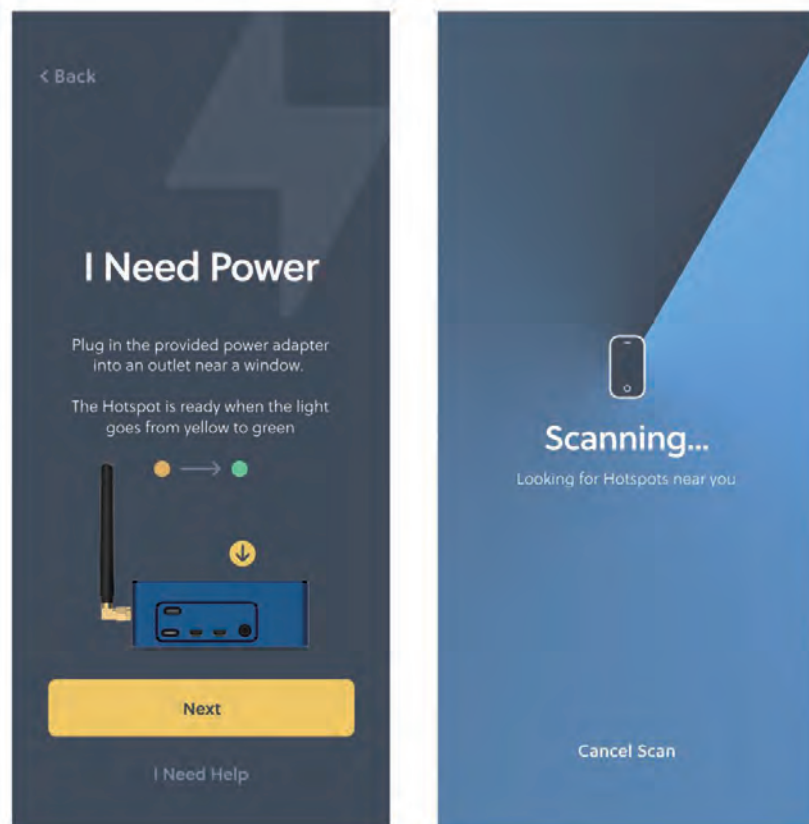
Step 3: Plug in the Hotspot:

- Pretty easy, right? Plugging it into the outlet automatically powers it up. It can take a few seconds for the lights to come on while it boots.
- Please review the placement recommendations to ensure that your hotspot performs to the best of its ability. The better your hotspot can do its job, the more likely you are to earn rewards.



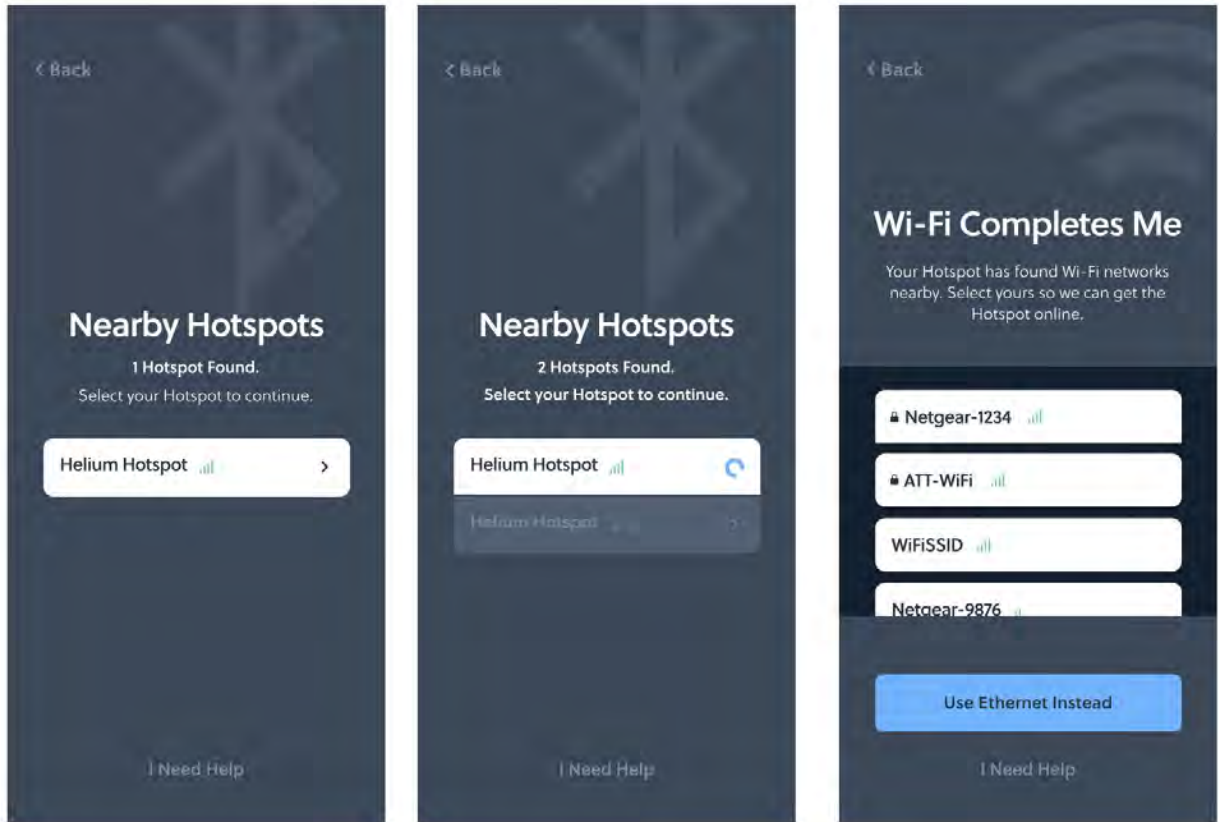
Step 4: Set up the Hotspot:

- In the app, go to the Hotspots tab at the bottom of the screen and click the green Set up Hotspot button. That will walk you through pairing up over Bluetooth.
- FYI, this is done through the app, it won't show in the phones' Bluetooth devices' area.
 - Note that both Bluetooth and Location Services need to be enabled in both the phone settings as well as the app settings.
- If you're having trouble pairing, please check out the Hotspot Setup Troubleshooting Guide for suggestions.



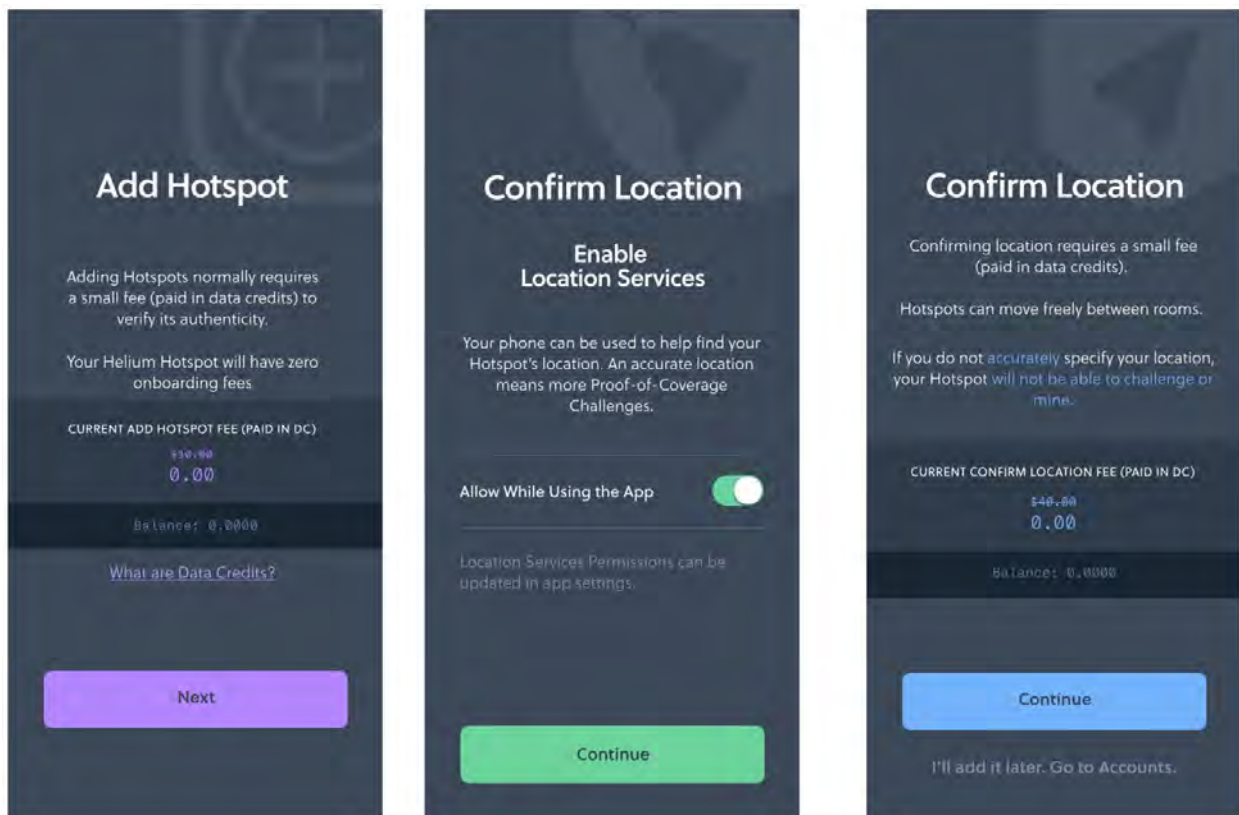
Step 5: Connect to the Internet:

- This can be done by selecting an available WiFi network or plugging in an Ethernet cable.
 - If you have trouble connecting, please check out the Network Troubleshooting Guide for some tips.



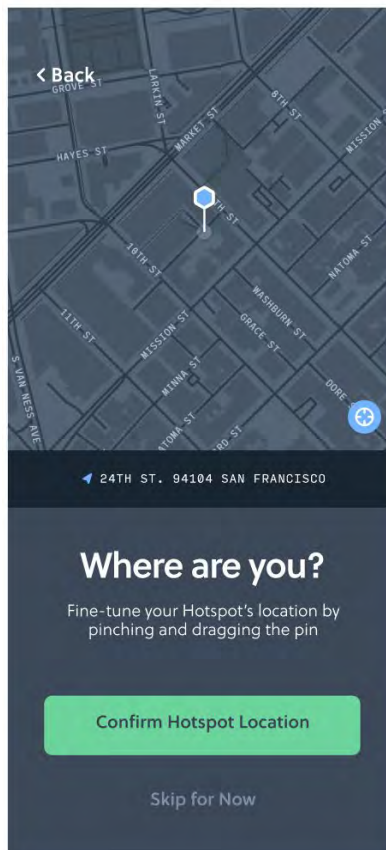
Step 6: Add the Hotspot to the Blockchain:

- Depending on when exactly your Hotspot was produced, it may require a firmware update as well. You'll see a page in the app of this if it's required. In that case, you just need to leave it plugged in and connected to the internet for about 15 minutes...so you can take a break, go grab a coffee, watch some TV, etc, and then come back, re-pair over Bluetooth, and proceed through the steps. At that point, as long as the internet has been properly connected it will have automatically updated and you'll be able to skate through the setup.
- You'll see a note about On-Boarding Fees. For Hotspots purchased directly through helium.com, we waive this \$10 fee (paid in Data Credits) for you!



Step 7: Set your Location:

- There will normally be a \$40 fee to set your location (also paid in Data Credits), but the first time you set the location we cover this fee for you (in the future, there may be a cost for updating to a new location). The fees are used to validate and safeguard the network.
- Once past this screen, you can specify the location by zooming in on the map and Confirm Hotspot Location.
- Note that this is not done automatically and is required before tokens can be earned.



Step 8: You're done!

- Please allow 24-48 hours to fully sync the blockchain.
- Once it's synced, and if you're data hungry or curious, you can monitor your Hotspot and the Network from within the app, or from one of the two following pages:
 - Our network visualizer and block explorer: <https://network.helium.com/coverage>
 - Our Dashboard: <http://dashboard.helium.com>

For more information about what your hotspot is doing while it's running, see the My Hotspot collection of articles in the support center.

FCC Statement

This equipment has been tested and found to comply with the limits for a Class B digital device, pursuant to part 15 of the FCC rules. These limits are designed to provide reasonable protection against harmful interference in a residential installation. This equipment generates, uses and can radiate radio frequency energy and, if not installed and used in accordance with the instructions, may cause harmful interference to radio communications. However, there is no guarantee that interference will not occur in a particular installation. If this equipment does cause harmful interference to radio or television reception, which can be determined by turning the equipment off and on, the user is encouraged to try to correct the interference by one or more of the following measures:

- Reorient or relocate the receiving antenna.
- Increase the separation between the equipment and receiver.
- Connect the equipment into an outlet on a circuit different from that to which the receiver is connected.
- Consult the dealer or an experienced radio/TV technician for help.

To assure continued compliance, any changes or modifications not expressly approved by the party.

Responsible for compliance could void the user's authority to operate this equipment. (Example- use only shielded interface cables when connecting to computer or peripheral devices).

This equipment complies with Part 15 of the FCC Rules. Operation is subject to the following two conditions:

- (1) This device may not cause harmful interference, and
- (2) This device must accept any interference received, including interference that may cause undesired operation.

FCC Radiation Exposure Statement:

The equipment complies with FCC Radiation exposure limits set forth for uncontrolled environment. This equipment should be installed and operated with minimum distance 20cm between the radiator and your body.