



# Hybrid binocular zoom camera

## Quick Operation Guide

V2022-1.0

The Items in pics might have differences with actual products,please refer to actual ones.

### APP Download And Installation

Scan the QR code with your mobile phone, or search for the "iC See" APP in the app market, download and install it.

#### Note for Android:

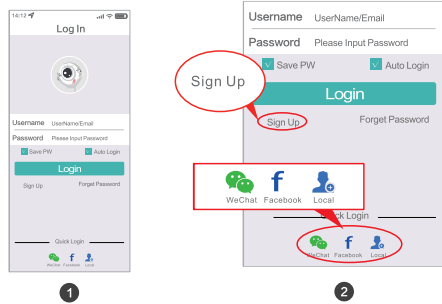
Please click "Normal Download", do not click "Safe Download" or "High Speed Download";



Scan the "QR code" to download.

### Account Registration and Login

1. Open the "iC See" APP, click "Register", use your mobile phone or email to register an account; WeChat, local direct connection, log in to the APP (as shown in the figure below).

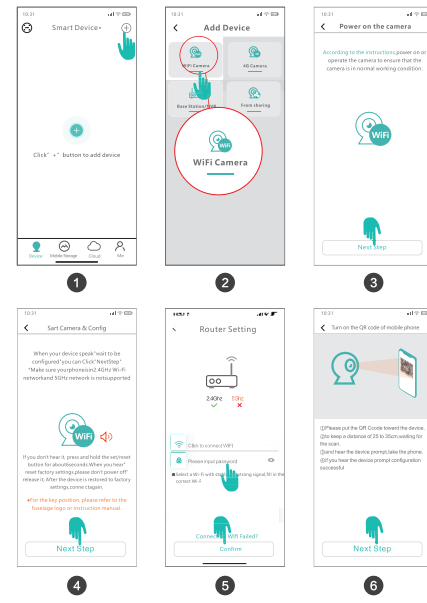


>04<

### (WiFi device) Pairing a wireless network

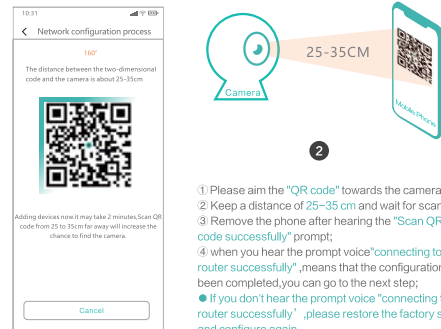
1. The mobile phone to be paired must be connected to the WiFi router first (only 2.4GHz is supported)

Please follow the steps below:



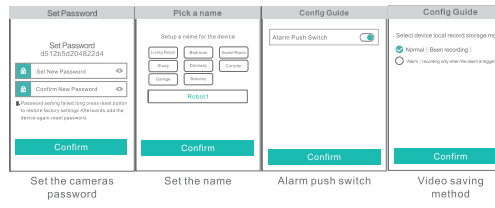
>05<

2. Enter the 'Scanning the QR Code' interface, please follow the instruction to pair (as shown in the figure below);



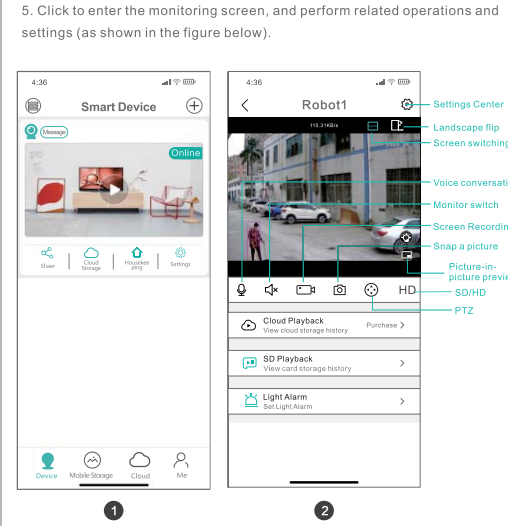
- 1) Please aim the "QR code" towards the camera lens;
- 2) Keep a distance of 25-35 cm and wait for scanning;
- 3) Remove the phone after hearing the "Scan QR code successfully" prompt;
- 4) when you hear the prompt voice "connecting to the router successfully", means that the configuration has been completed, you can go to the next step;
- 5) If you don't hear the prompt voice "connecting to the router successfully", please restore the factory settings and configure again.

3. After the successful connection, next step is set the device password and device name, and then follow the APP interface guide to finish the configuration (as shown in the figure below).



>06<

4. After the pairing is completed, the newly added device will be displayed in the list, which means the device is successfully connected (as shown in the figure below).

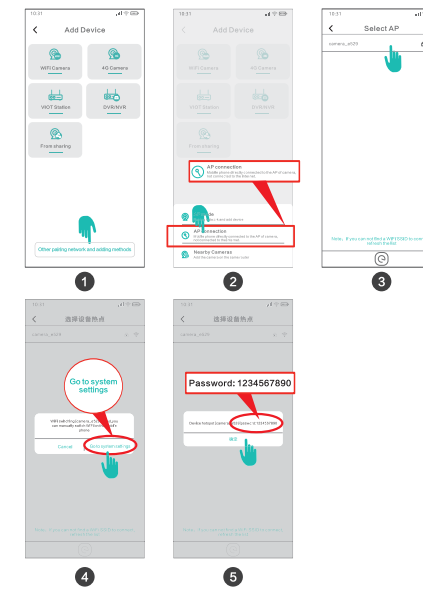


Note: Mobile tracking is only for PTZ cameras, not supported for low-consumption cameras/bullet cameras.

>07<

### AP hotspot mode (used for situation without external network)

\*Please press the "reset" button continuously for 3-5 times, after the device prompts "enter direct connection mode", please follow the steps below to connect.

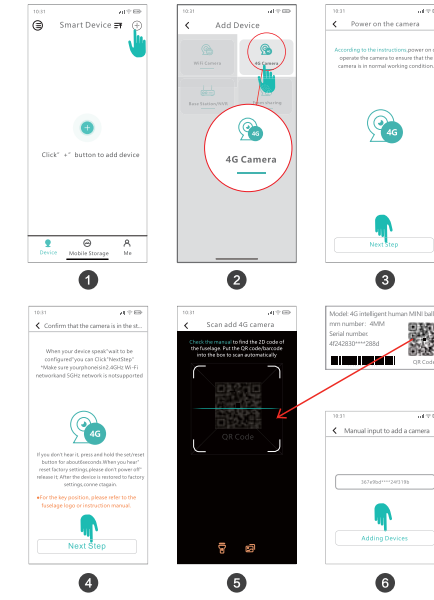


>08<

### (4G Data Device) Network Connection

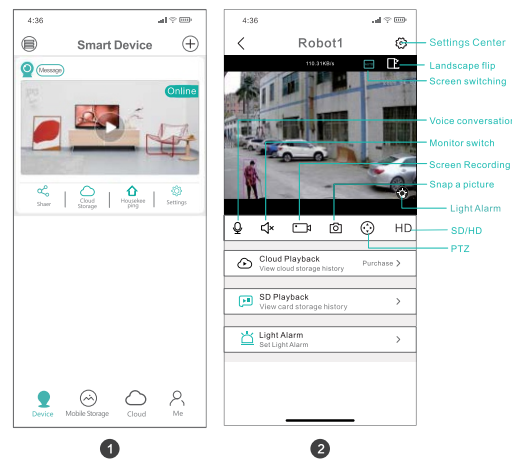
1. Please download and install the APP first, log in to the APP and ensure that the mobile phone network is normal;

\* Please follow the steps shown below to add devices



>09<

2. After the device is added successfully, enter the "device password" according to the interface prompts to confirm and save the next step;
3. Enter the configuration device name and video saving function, and follow the prompts to select to complete the addition;
4. After the pairing is completed, the newly added device will be displayed in the list, which means the device is successfully connected (as shown in the figure below);
5. Click to enter the monitoring screen to prompt the purchase of traffic, and perform related operations and settings (as shown in the figure below).

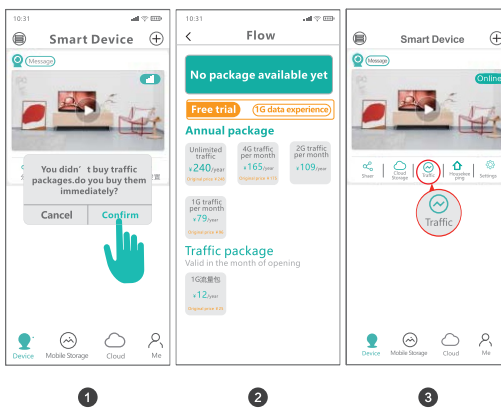


Notice: Motion tracking is only for PTZ cameras;

>10<

### Purchase 4G Data Guide

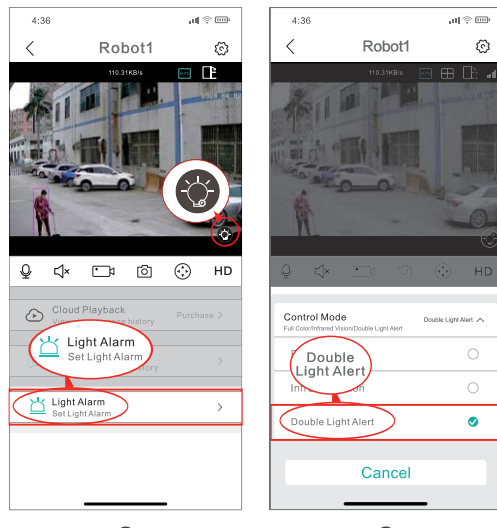
- When the device prompts "connected to the network successfully", it means that the pairing is completed successfully;
  - Purchasing data is required for successful device pairing, please follow the instructions to purchase (as shown in the figure below);
  - Enter the data purchase interface, follow the interface prompts, select the corresponding package and click to prompt payment (as shown in the figure below);
  - Successful purchase will automatically jump to the traffic query page;
- \*Note: If the purchase interface is not prompted, please click "traffic" in the device list to enter;



>11<

### Set dual light alert mode (Bullet/Dome Camera)

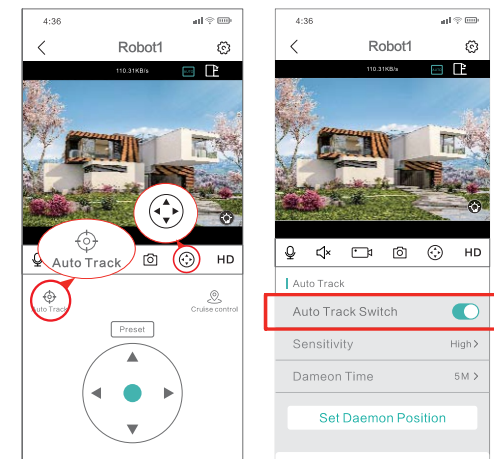
- Open the APP, enter the real-time playback of the device, and click the "light alert" or the "light bulb" icon on the screen to open the setting alert mode (as shown in the figure below);



>12<

### Set 'mobile tracking' / 'human tracking' (Indoor pan&tilt / Outdoor dome)

- Click the "Auto Track" icon on the preview page to turn on related functions (shown in the pic)
- Mobile tracking: after this function is turned on, the camera would follow the trail of the moving object when objects show in the range of the camera
- Setting watch points: set a fixed point, after the related operations and tracking, the camera would stay a while and move back to the watch point.

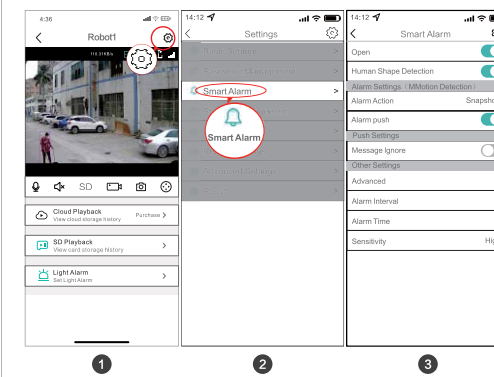


>13<

### Set the humanoid warning alarm function

Note: 'Mobile Tracking' and 'Smart Human Alarm' can't be turned on both; set 'Smart Human Alarm' function

- Setting watch points: set a fixed point, after the related operations and tracking, the camera would stay a while and move back to the watch point.

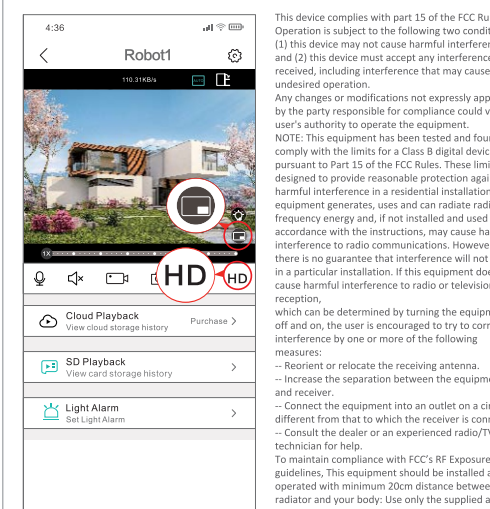


- Functions:
- Notification: You can only receive the alarm message when you turn on the "Notification"
  - Human Detection: trigger alarm when detects human shape only
  - Show Trails: when human shows in the picture, the device would track the human and send notifications
  - Rule Settings: choose selected area [Alert Line], and triggers the alarm when human enters the area.

>14<

### Setting 'Picture-in-picture' preview (Dual Lens Camera)

- 'Picture-in-picture' preview: select 'HD', then select 'HD' to check the picture-in-picture view; long-focus or short-focus views



>15<

This device complies with part 15 of the FCC Rules. Operation is subject to the following two conditions: (1) this device may not cause harmful interference, and (2) this device must accept any interference received, including interference that may cause undesired operation.

Any changes or modifications not expressly approved by the party responsible for compliance could void the user's authority to operate the equipment.

NOTE: This equipment has been tested and found to comply with the limits for a Class B digital device, pursuant to Part 15 of the FCC Rules. These limits are designed to provide reasonable protection against harmful interference in a residential installation. This equipment generates, uses and can radiate radio frequency energy and, if not installed and used in accordance with the instructions, may cause harmful interference to radio communications. However, there is no guarantee that interference will not occur in a particular installation. If this equipment does cause harmful interference to radio or television reception, which can be determined by turning the equipment off and on, the user is encouraged to try to correct the interference by one or more of the following measures:

- Reorient or relocate the receiving antenna.
- Increase the separation between the equipment and receiver.
- Connect the equipment into an outlet on a circuit different from that to which the receiver is connected.
- Consult the dealer or an experienced radio/TV technician for help.

To maintain compliance with FCC's RF Exposure guidelines, This equipment should be installed and operated with minimum 20cm distance between the radiator and your body. Use only the supplied antenna.