

FIRMENSITZ
Tersteegenstr. 15
D 46045 Oberhausen

GESCHÄFTSSITZ
Am Wiesenbusch 1
D 45966 Gladbeck

GESCHÄFTSFÜHRER
Dipl.-Ing. Andreas Hilburg
Dipl.-Ing. Matthias Krzizan

Fon: 02043 945 137
Fax: 02043 945 100

info@biobedded.de
www.biobedded.de

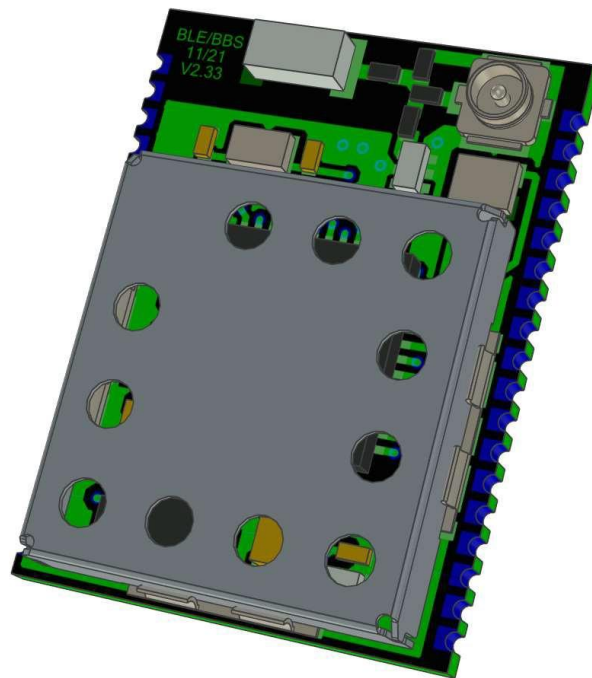
Label

ProSmap Module BLE0001 (-A / -B)

version: V1.0

date: 12.01.2022

manufacturer: Biobedded Systems GmbH



Label ProSmap Module BLE0001-A

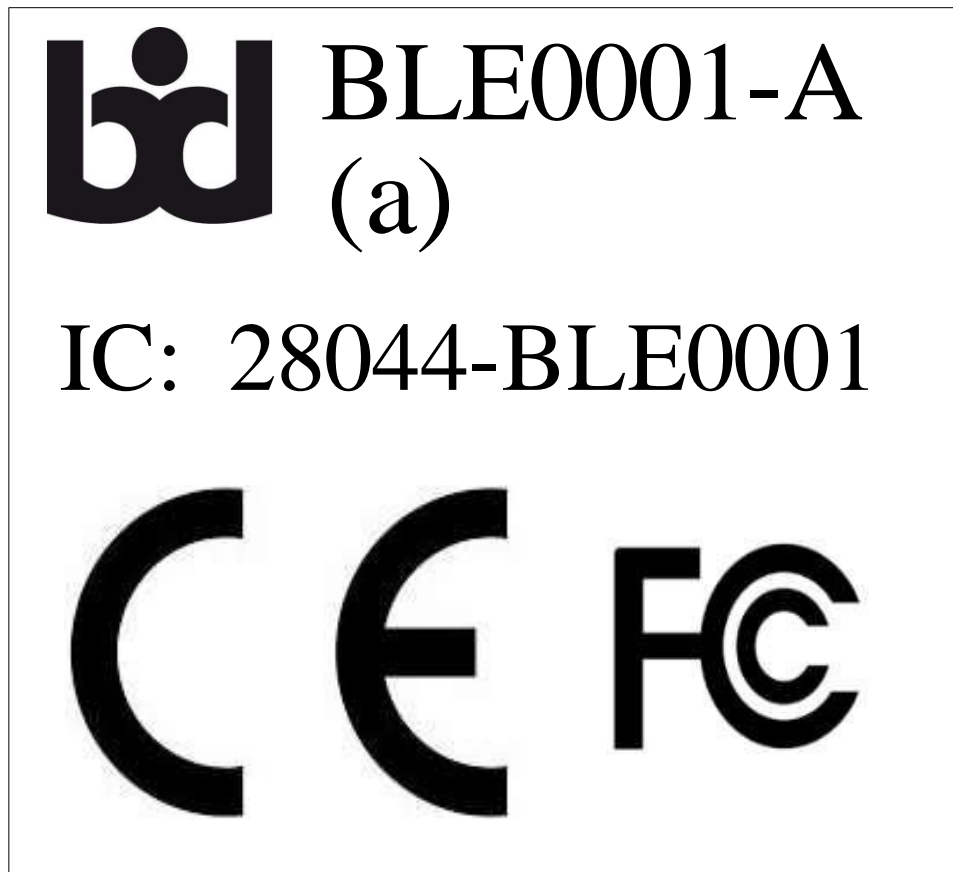
Scale 1:1



Outline Dimension: 12,7x11mm

LASER PRINTABLE HIGH TEMPERATURE POLYIMIDE LABEL

Scale 10:1



Fond-Size: 3,5pt BOLT

Label ProSmap Module BLE0001-B

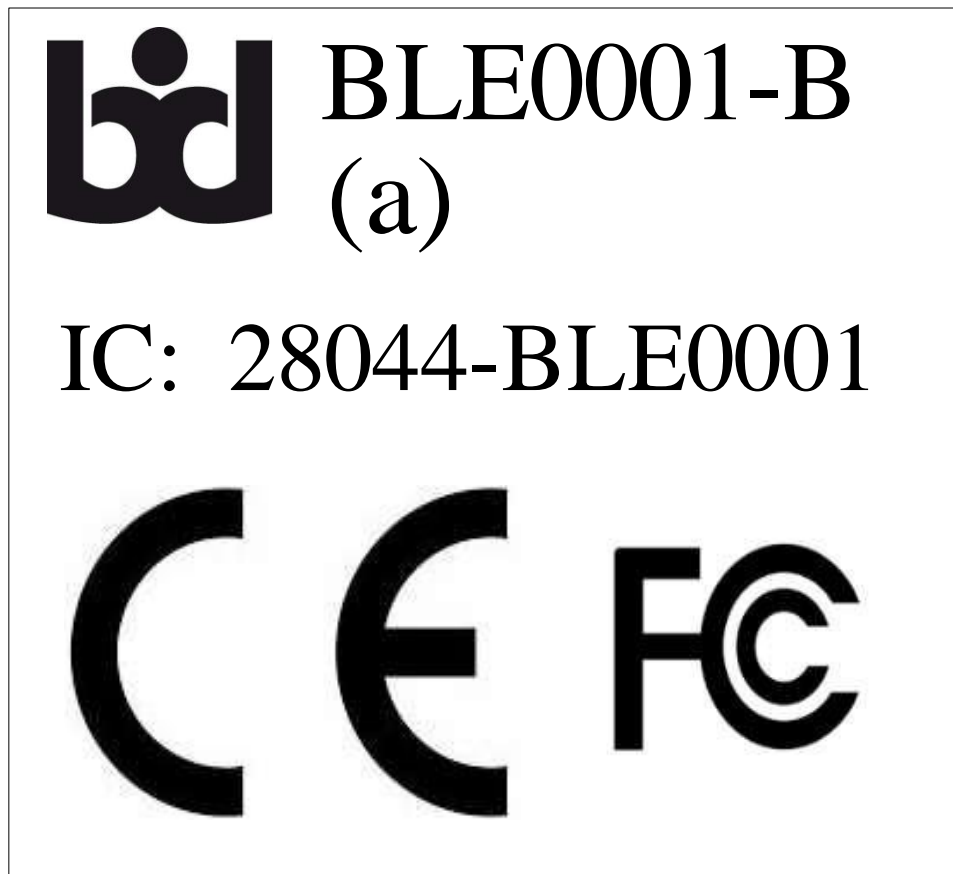
Scale 1:1



Outline Dimension: 12mmx12mm

LASER PRINTABLE HIGH TEMPERATURE POLYIMIDE LABEL

Scale 10:1



Fond-Size: 3,5pt BOLT

Label for outer packaging

Outline Dimension: 80mmx80mm

