

# SPECIFICATION

## SHEET FOR APPROVAL

(Revision: R: A1)

CUSTOMER(客户名称)	Hesung Innovation Limited	
CS P/N(客户机种)	HSCX-C1	Internal model:T02B
PART NAME(品名)	WIFI Antenna	
FREQUENCY(频率)	2400~2500MHz	
ZTX NO.(物料编号)	K.00000024	
DATE(日期)	2023-01-30	

CUSTOMER			
QA CHECKED	ME CHECKED	RF CHECKED	MANAGER CHECKED

Remark(备注):

Sign(客户确认签字盖章): \_\_\_\_\_

Shenzhen ZTX Communication Technology Co., Ltd				
MANAGER CHECKED	MANAGER CHECKED	ME CHECKED	RF CHECKED	LISTER
		Lai Ningping	Gu Jin ping	

 **中天迅**

Shenzhen ZTX Communication Technology Co., Ltd

地址: 深圳市宝安区石岩镇石龙大道 34 号(腾达工业园) 邮编: 518000

Address: No.34, Shilong Avenue, Shiyan Town, Baoan District, Shenzhen, (Tengda Industrial Park) 518000

电话: 0755-27588320 传真: 0755-27588045 <http://www.chinaztx.com>

Tel.: 0755-27588320 Fax: 0755-27588045 <http://www.chinaztx.com>

# ANTENNA SPECIFICATION

CUS P/N :HSCX-C1 WIFI Antenna  
ZTX P/N :HSCX-C1 WIFI Antenna

ApplicationDate:Dec,15,2022  
Editor:

Rev: R:A1  
Page 1 of 9

---

## Revision history

NO	Date	
		The first edition
A0	2022-12-15	editio princeps
A1	2023-01-30	Wire extension by 15mm

# ANTENNA SPECIFICATION

CUS P/N :HSCX-C1 WIFI Antenna  
ZTX P/N :HSCX-C1 WIFI Antenna

ApplicationDate:Dec,15,2022  
Editor:

Rev: R:A1  
Page 2 of 9

---

## Index

		<b>Revision history</b>	<b>1</b>
		<b>Index</b>	<b>2</b>
<b>1</b>		<b>Mechanical Specification</b>	<b>3</b>
	<b>1-1</b>	<b>Mechanical Specification(WIFI Antenna)</b>	<b>3</b>
<b>2</b>		<b>Test equipment</b>	<b>4</b>
<b>3</b>		<b>Test Results Summary</b>	<b>5</b>
	<b>3-1</b>	<b>OTA Test</b>	<b>5</b>
	<b>3-2</b>	<b>Transmit Test</b>	<b>5</b>
	<b>3-3</b>	<b>VSWR</b>	<b>6</b>
	<b>3-4</b>	<b>No-source test data</b>	<b>6</b>
	<b>3-5</b>	<b>Environment treatment</b>	<b>7</b>
	<b>3-6</b>	<b>2D/3D Radiation Pattern Results</b>	<b>7</b>
<b>4</b>		<b>Environment Characteristic</b>	<b>8</b>
<b>5</b>		<b>The packing way</b>	<b>9</b>

# ANTENNA SPECIFICATION

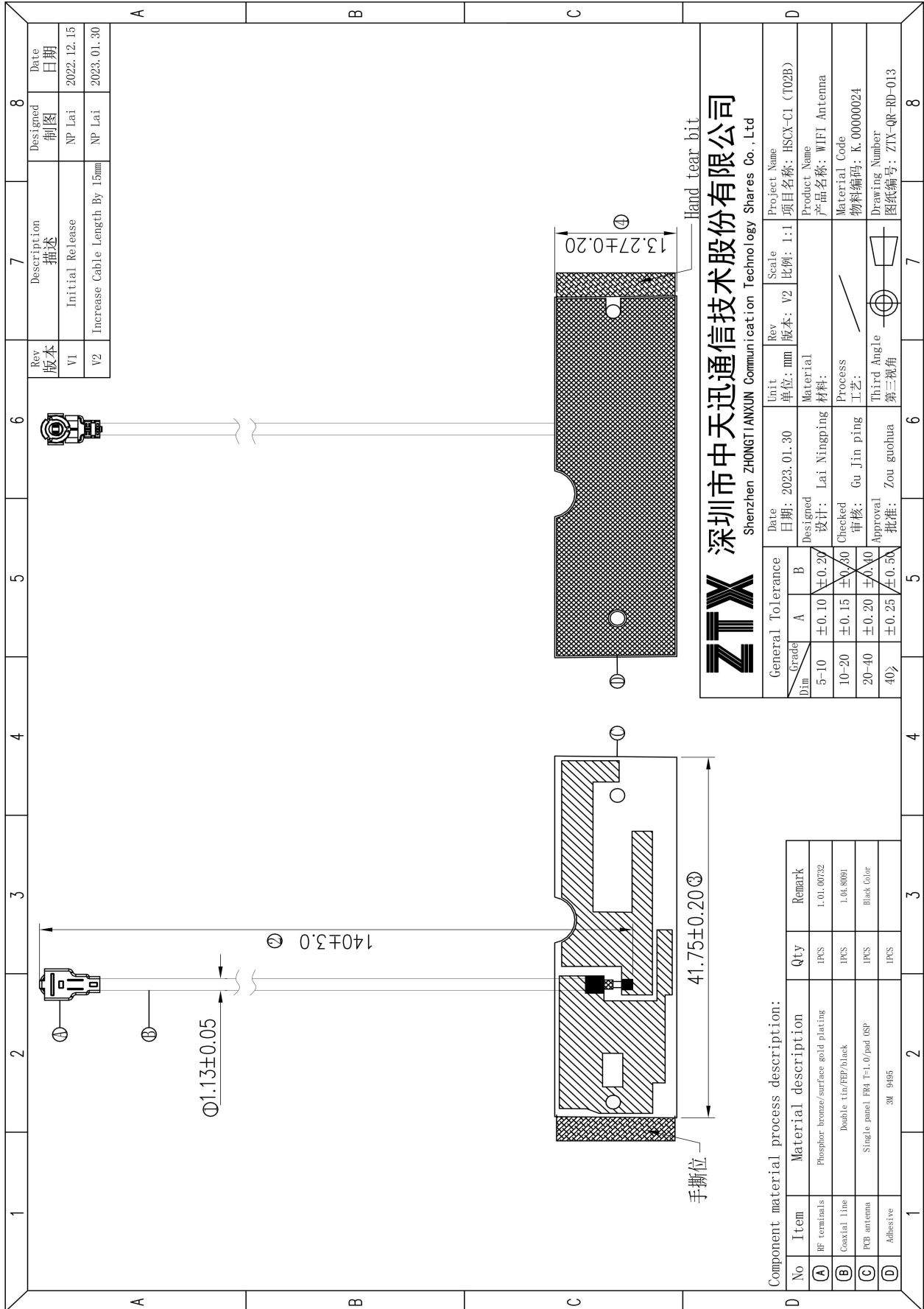
CUS P/N :HSCX-C1 WIFI Antenna  
ZTX P/N :HSCX-C1 WIFI Antenna

ApplicationDate:Dec,15,2022  
Editor:

Rev: R:A1  
Page 3 of 9

## 1. Mechanical Specification

### 1-1 Mechanical Configuration (WIFI Antenna)



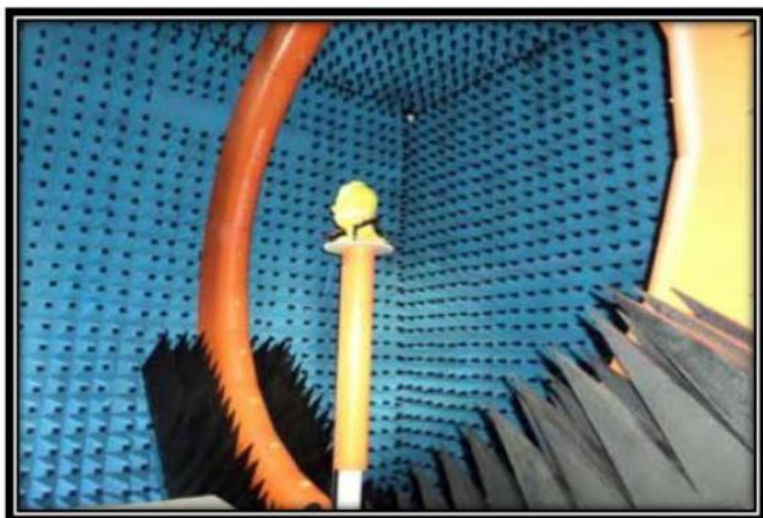
# ANTENNA SPECIFICATION

CUS P/N :HSCX-C1 WIFI Antenna  
ZTX P/N :HSCX-C1 WIFI Antenna

ApplicationDate:Dec,15,2022  
Editor:

Rev: R:A1  
Page 4 of 9

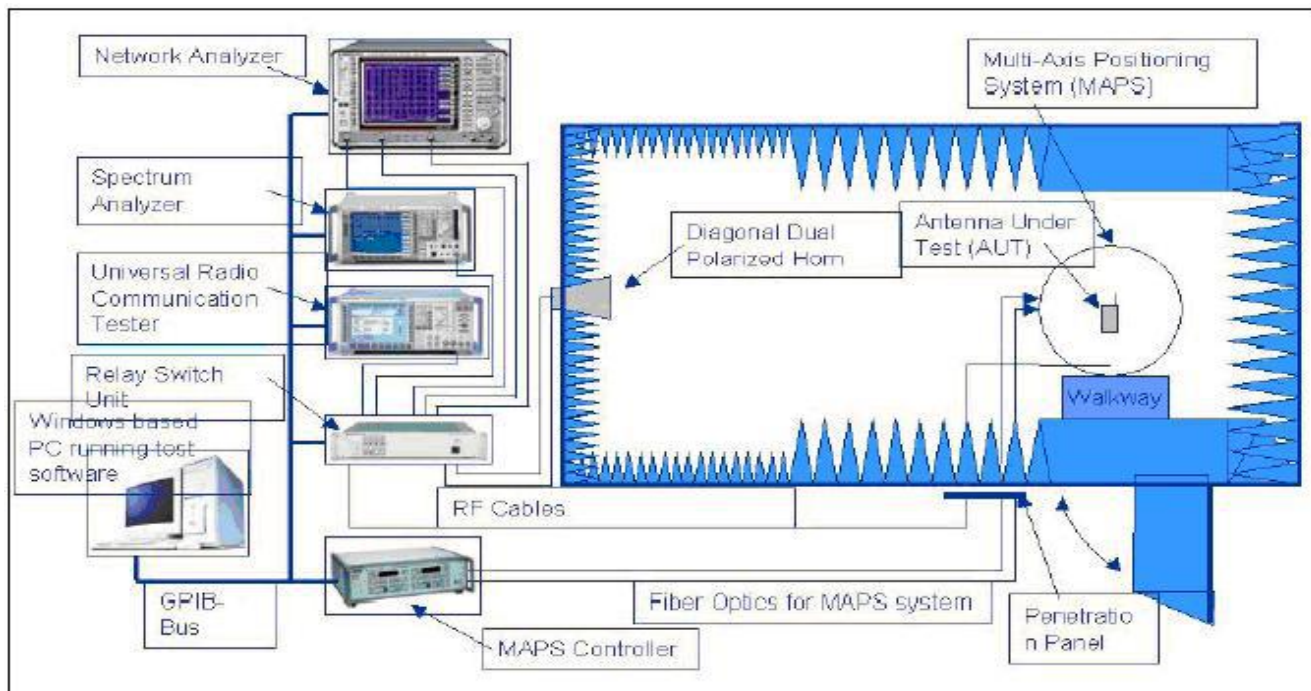
## 2. Test equipment



Owned 6 microwave dark room, equipped 2 sets world leading France Satimo SG24 OTA certification test systems (one in SHENZHEN, another one in Shanghai), ETS OTA Standard test system, Blue test reverberation test system which is High repeatability, high accuracy and high resolution. It can quickly provide accurate test reports, fully meet the CTIA standards.

Testing range:

Support active, passive testing of GSM/CDMA/WCDMA/TD-SCDMA/LTE/WIFI/WLAN/WiMax/BT/GPS/MIMO/UWB within 0.4-6G.



# ANTENNA SPECIFICATION

CUS P/N :HSCX-C1 WIFI Antenna  
ZTX P/N :HSCX-C1 WIFI Antenna

ApplicationDate:Dec,15,2022  
Editor:

Rev: R:A1  
Page 5 of 9

## 3.Test Results Summary

### 3-1 OTA Test

11b	Channels	TRP (1M)	TIS (11M)
	1	15.46	-81.36
	6	17.64	-82.27
	11	16.91	-82.09
11g	Channels	TRP (6M)	TIS (54M)
	1	16.25	-66.2
	6	17.14	-68.27
	11	16.24	-66.81
11n	Channels	TRP (MCS0)	TIS (MCS7)
	1	16.08	-60.09
	6	17.52	-62.76
	11	16.43	-61.47

### 3-2 Transmit Test

11b	Channels	TRP (1M)	TIS (11M)
	1	16.63	-88.22
	6	18.31	-88.59
	11	18.54	-88.63
11g	Channels	TRP (6M)	TIS (54M)
	1	17.15	-73.02
	6	17.92	-72.88
	11	17.45	-73.15
11n	Channels	TRP (MCS0)	TIS (MCS7)
	1	17.13	-67.83
	6	17.97	-67.85
	11	17.28	-67.79

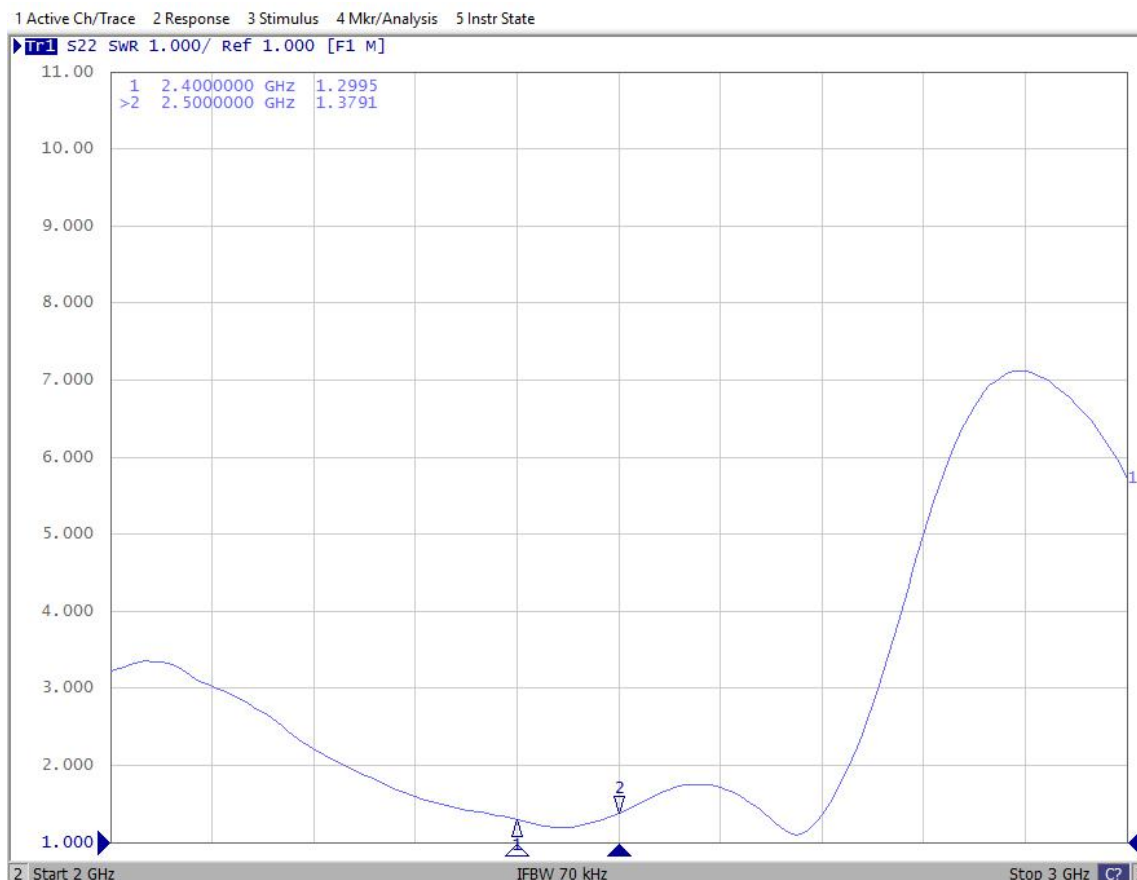
# ANTENNA SPECIFICATION

CUS P/N :HSCX-C1 WIFI Antenna  
ZTX P/N :HSCX-C1 WIFI Antenna

ApplicationDate:Dec,15,2022  
Editor:

Rev: R:A1  
Page 6 of 9

## 3-3 VSWR



## 3-4 No-source test data

Frequency	Efficiency	Efficiency (dBi)	Gain (dBi)
2400MHz	60%	-2.75	3.95
2410MHz	61%	-2.71	3.19
2420MHz	62%	-2.63	3.58
2430MHz	61%	-2.67	3.87
2440MHz	60%	-2.72	4.20
2450MHz	60%	-2.76	4.30
2460MHz	60%	-2.73	4.24
2470MHz	58%	-2.93	4.26
2480MHz	57%	-2.98	4.30
2490MHz	57%	-2.99	4.63
2500MHz	59%	-2.88	4.64

# ANTENNA SPECIFICATION

CUS P/N :HSCX-C1 WIFI Antenna  
ZTX P/N :HSCX-C1 WIFI Antenna

ApplicationDate:Dec,15,2022  
Editor:

Rev: R:A1  
Page 7 of 9

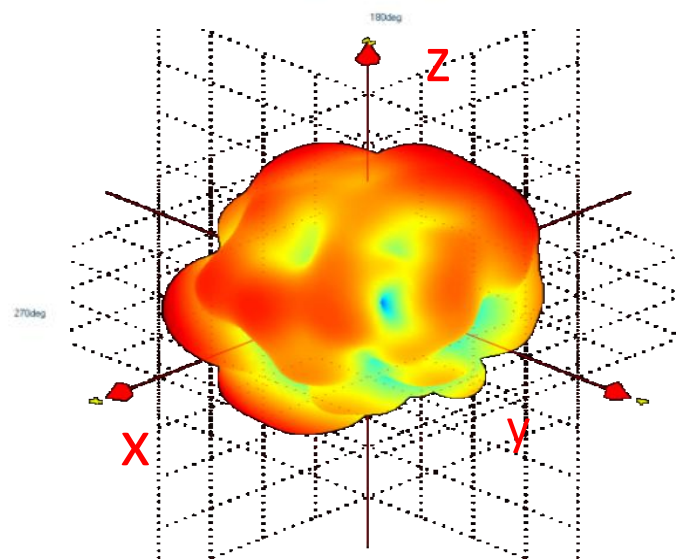
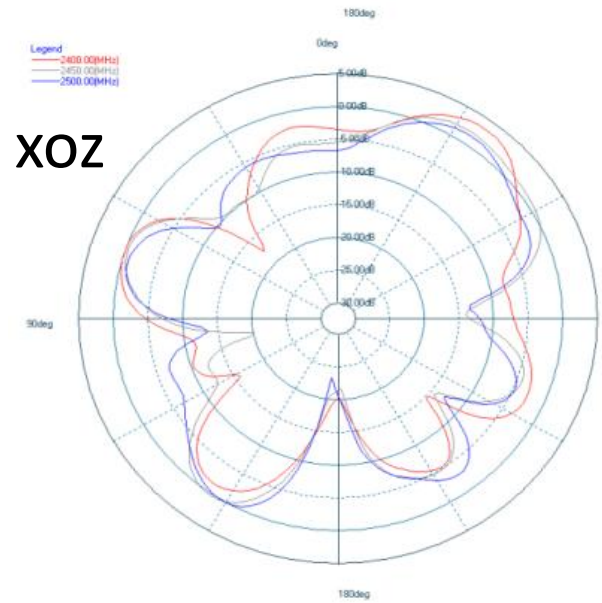
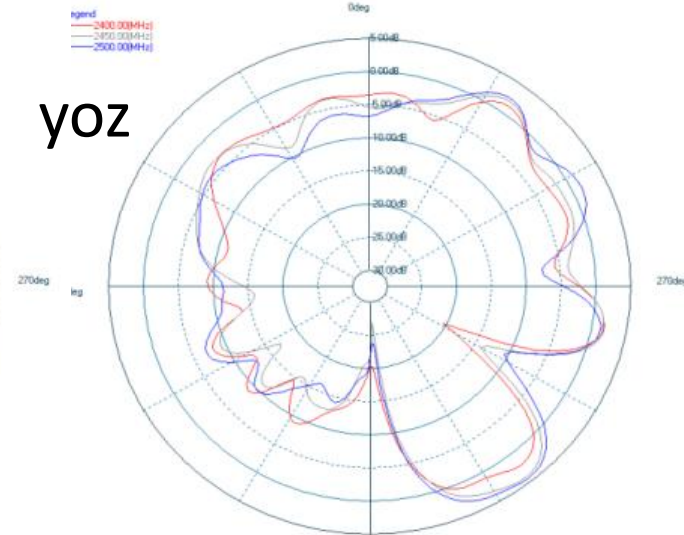
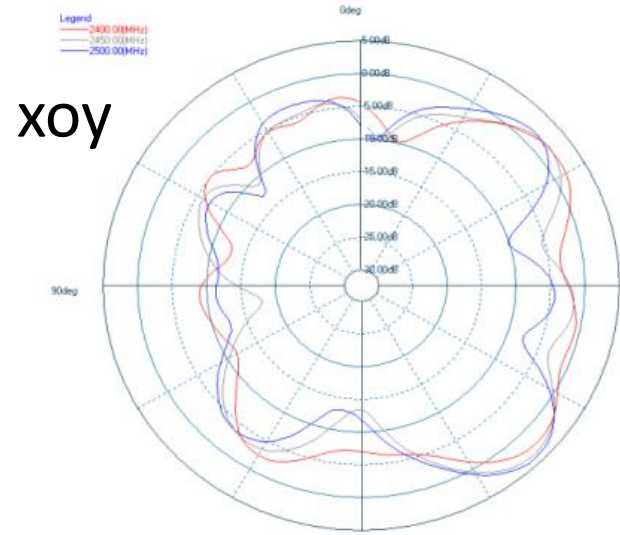
---

## 3-5 Environment treatment



## 3-6 2D/3D Radiation Pattern Results





# ANTENNA SPECIFICATION

CUS P/N :HSCX-C1 WIFI Antenna  
ZTX P/N :HSCX-C1 WIFI Antenna

ApplicationDate:Dec,15,2022  
Editor:

Rev: R:A1  
Page 8 of 9

## 4.Environment Characteristic

NO.	ITEM	TEST CONDITION	SPECIFICATION
4-1	High Temperature/Humidity Storage Test(non operating)	1. Temperature: $+70 \pm 2^{\circ}\text{C}$ 2. Humidity: 90~95%RH 3. Time: 48hrs	No material deformation is allowed.
4-2	Low Temperature/Humidity Storage Test(non operating)	1. Temperature: $-30 \pm 2^{\circ}\text{C}$ 2. Humidity: 0%RH 3. Time: 48hrs	The VSWR, Gain, Radiation Pattern must be met specifications after these test.

# ANTENNA SPECIFICATION


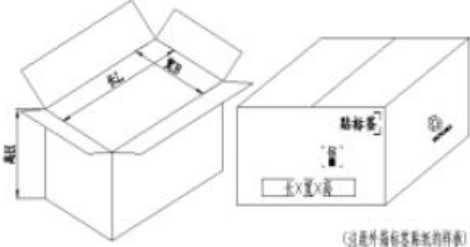
CUS P/N :HSCX-C1 WIFI Antenna  
ZTX P/N :HSCX-C1 WIFI Antenna

ApplicationDate:Dec,15,2022  
Editor:

Rev: R:A1  
Page 9 of 9

## 5.The packing way

### 包装规范&作业指导书 SOP

客户名称 customer name	esung Innovation Limited	产品型号 product model	HSCX-C1 (T02B)		产品名称 product	WIFI Antenna
纸箱规格Carton specifications	K=K45*32.5*21CM		物料编号 Material number	1.12.000002	用量 dosage	1PCS
PE封口袋PE seal pocket	360*280*0.10mm		物料编号 Material number	1.12.000026	用量 dosage	10PCS
PE开口袋PE open the pocket	240*160*0.05mm		物料编号 Material number	1.12.000030	用量 dosage	100PCS
纸板规格Paper board	2PCS / box		其他物料unclassified stores	标签/胶带Tags / tape		
每箱数量Number of boxes per box	5000PCS	PE开口袋数量 PE open pocket number	50~100PCS	PE封口袋数量Number of PE sealing pockets	500~1000PCS	
注意事项 Matters need attention	<p>1.客户物料编码和数量是否正确，标签必须用机打印的。 2.内标签、外标签、出货报告、送货单内容需一致。 3.如是试产物料或有变更均需贴相应标识，尾数箱需贴尾数标识，内附检验报告等。</p> <p>1. Whether the customer material code and quantity are correct, the label must be printed by machine. 2. Internal label, external label, shipment report and delivery form should be consistent. 3. If the trial production materials or change, the corresponding identification shall be affixed, the mantissa box shall be affixed, and the inspection report shall be attached.</p>					
<p>包装简图Packaging diagram: :</p> <div style="display: flex; justify-content: space-between;"> <div style="width: 22%;"> <p>1.取 (50~100pcs) 产品，装袋，贴物料标签； 1. Take (50~100pcs) products, bag and label materials;</p> </div> <div style="width: 22%;"> <p>2.将包装好的产品装入大袋 (500~1000pcs)，贴物料标签； 2. Put the packaged products into large bags (500~1000pcs) and label the materials;</p> </div> <div style="width: 22%;"> <p>3.将包装好的装箱 (5000pcs)，贴物料标签； 3. Box the packaging (5000pcs) and label the materials;</p> </div> <div style="width: 22%;"> <p>4.封箱。 4. Seal the box.</p> </div> </div> 						
NO	变更内容Change content	变更人及日期 Change person and date				
标签简图Tag diagram :		外箱简图Short diagram of outer box :				
		 <p>(这是外箱包装箱体的样图)</p>				

制表(Tabulation) : 韦泓佳 HONGJIA WEI

审核(Checked by): 向恒锋 HENG FENG XIANG

核准(Approved by): 党非非 FEI FEI DANG