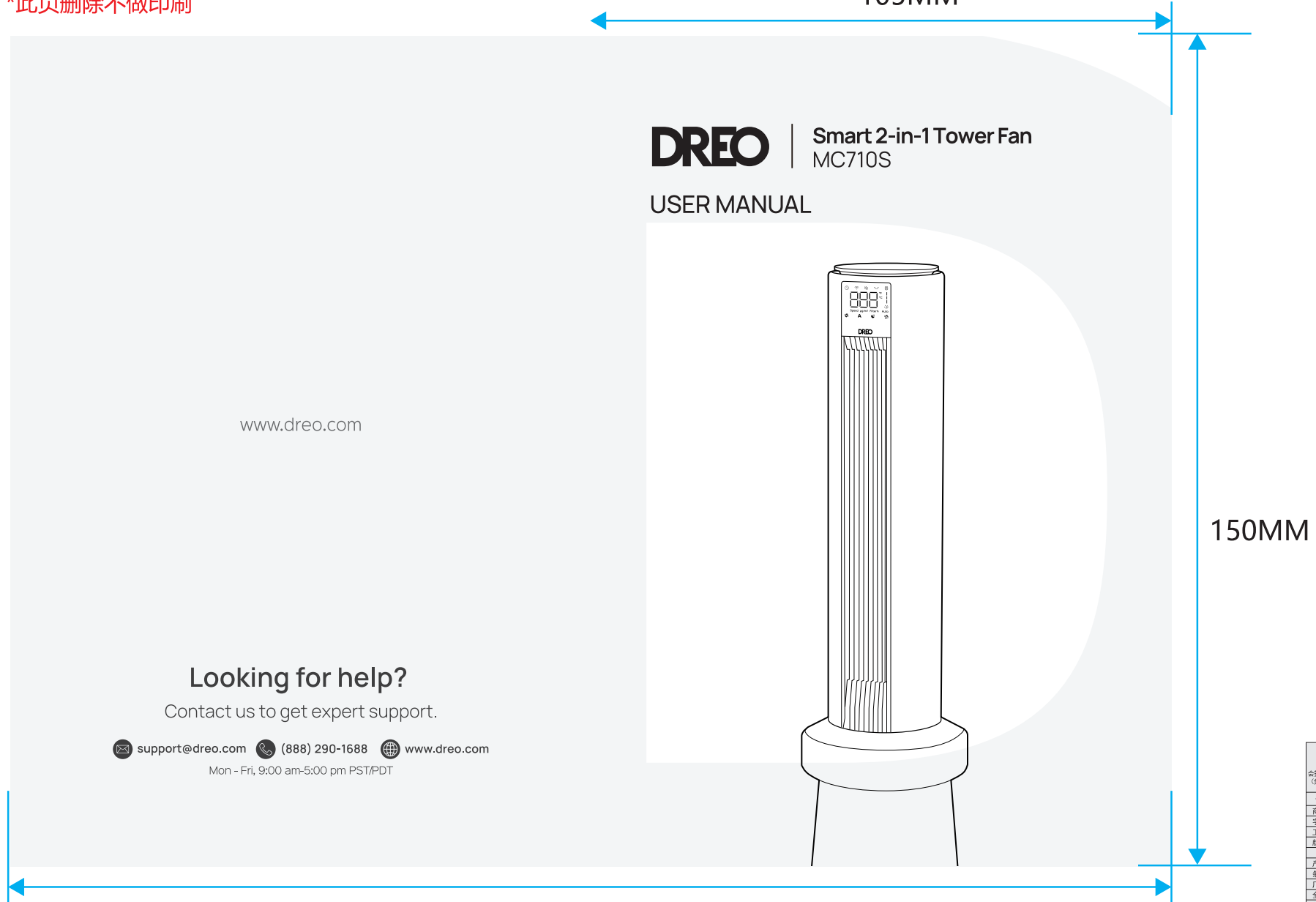


设计版本号	产品名称   Product name	比例   scale	日期   Date	设计师   Designer	审核   Audit
Rev_1.2_EN	DR-HTF010S_美规_说明书	1: 1	20231211	beryl	Harden
Hesung   innovation 和生创新	<b>材质印刷与 技术要求</b> 封面封底:80g书纸 内页: 80g书纸 印刷要求: 双面印刷, 文字线图清晰 装订方式: 骑马钉装订	<b>字体   Fonts</b> Manrope	<b>尺寸   Size</b> 105mm × 150mm		

\*此页删除不做印刷

图纸设计禁止修改, 尺寸刀模图为准



	裁切线
	正折线
	反折线
	出血位
	粘胶区域

<b>图层使用规范:</b>	
1、备注信息图层为非印刷区域, 展示印刷物料基础信息。 2、刀板线、备注工艺、尺寸层展示印刷工艺部分。 3、画面信息层展示印刷展示图片与文字。 *电子文档为Adobe Illustrator制作	
文件格式: model规格类自日期.AI (为可编辑原始文档)	
文件格式: model规格类自日期.pdf (为文件转曲不可编辑文档)	

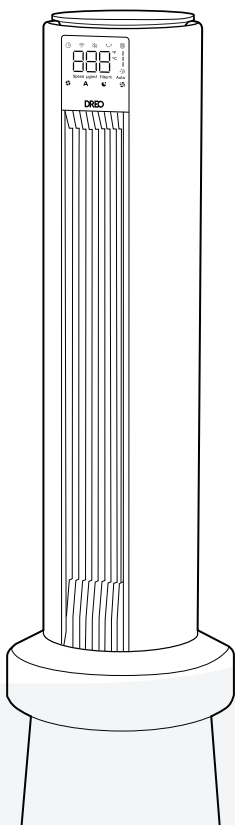
设计师	审核	产品负责人	法规	采购
-----	----	-------	----	----

审稿 检查事项 会议议“”形式确认 (负责部: 印刷部)
审核检查事项 商标规范 字符高度 工艺材质 颜色标识
产品文案 条码检查 厂址 全成分 警告标语 执行标准 产品尺寸 外/内箱尺寸 OEM信息* 产品包装信息
请相关部门确认产 品、包装等信息! *OEM信息: 委托方及被委托方 信息(名称、地址、 邮编、电话、生产 许可证、卫生许可 证)

# DREO

Smart 2-in-1 Tower Fan  
MC710S

## USER MANUAL



”

# Thanks for Choosing **DREO!**

Your support means the world to us. We hope you enjoy our product as much as we did creating it.

# CONTENTS

## 01

**IMPORTANT SAFETY  
INSTRUCTIONS**

1-2

---

## 02

**KNOWING YOUR SMART  
2-IN-1 TOWER FAN**

3-6

---

## 03

**CONNECTING TO  
YOUR SMART 2-IN-1  
TOWER FAN MC710S**

7

---

## 04

**USING YOUR SMART  
2-IN-1 TOWER FAN**

8-11

---

## 05

**CLEANING AND  
MAINTENANCE**

12-16

---

## 06

**TROUBLESHOOTING**

17-18

---

## 07

**DREO CUSTOMER  
CARE**

19-20

---

# IMPORTANT SAFETY INSTRUCTIONS

# 01



READ ALL CAUTIONARY MARKINGS ON THE APPLIANCE AND SAFETY INSTRUCTIONS IN THE USER MANUAL BEFORE USE.



**Do not** cover the air inlet and outlet while in operation.



**Do not** use the fan near flammables and combustibles.

## General Safety

- 1.Children shall not play with the appliance. Cleaning and maintenance shall not be performed by children without supervision.
- 2.Use the appliance as described in the user manual only. Any other use not recommended in the user manual may cause fire, electrical shock, or personal injury.
- 3.This appliance can be used by children aged above 8 years and persons with reduced physical, sensory or mental capabilities or lack of experience and knowledge if they have been given supervision or instruction concerning use of this appliance in a safe way and understand the hazards involved.

## Operation Safety

- 1.Place the appliance on a flat, dry surface before use.
- 2.Do not immerse in water and any other liquids.
- 3.Do not use the appliance until the base is installed.
- 4.Do not insert your fingers, pencil, and any other objects into the grilles while in operation.
- 5.Do not dismantle, repair, or modify. All servicing should be performed by qualified personnel.

## Electricity Safety

1. Make sure that the voltage of your electricity supply is the same as that indicated on the appliance.
2. Always unplug before cleaning or leaving the appliance unused for a long period of time. Keep your hands dry when plugging / unplugging.
3. Do not operate any fan with a damaged cord or plug. Discard fan or return to an authorized service facility for examination and/or repair.
4. Do not run cord under carpeting. Do not cover cord with throw rugs, runners, or similar coverings. Do not route cord under furniture or appliance. Arrange cord away from traffic area and where it will not be tripped over.
5. **WARNING:** To reduce the risk of fire or electric shock, do not use this Fan with any solid-state speed control device.
6. This appliance employs overload protection (fuse). A blown fuse indicates an overload or short-circuit situation. If the fuse blows, unplug the product from the outlet. Replace the fuse as per the user servicing instructions and check the appliance. If the replacement fuse blows, a short-circuit may be present and the appliance should be discarded or returned to an authorized service facility for examination and/or repair.
7. This appliance has a polarized plug (one blade is wider than the other). To reduce the risk of electric shock, this plug is intended to fit in a polarized outlet only one way, If the plug does not fit fully in the outlet, reverse the plug. If it still does not fit, contact a qualified electrician. Do not attempt to defeat this safety feature.
8. **WARNING:** To reduce the risk of fire, electric shock or injury to persons, do not use replacement parts that have not been recommended by the manufacturer (e.g. parts made at home using a 3D printer).

# FOR HOUSEHOLD USE ONLY READ AND SAVE THESE INSTRUCTIONS

## Gentle Reminder:



Check the appliance regularly and refer to TROUBLESHOOTING or contact our customer support if it shows any of the following signs:

- Power cord or plug is damaged.
- Loud noise, unusual smell or excessive heat.

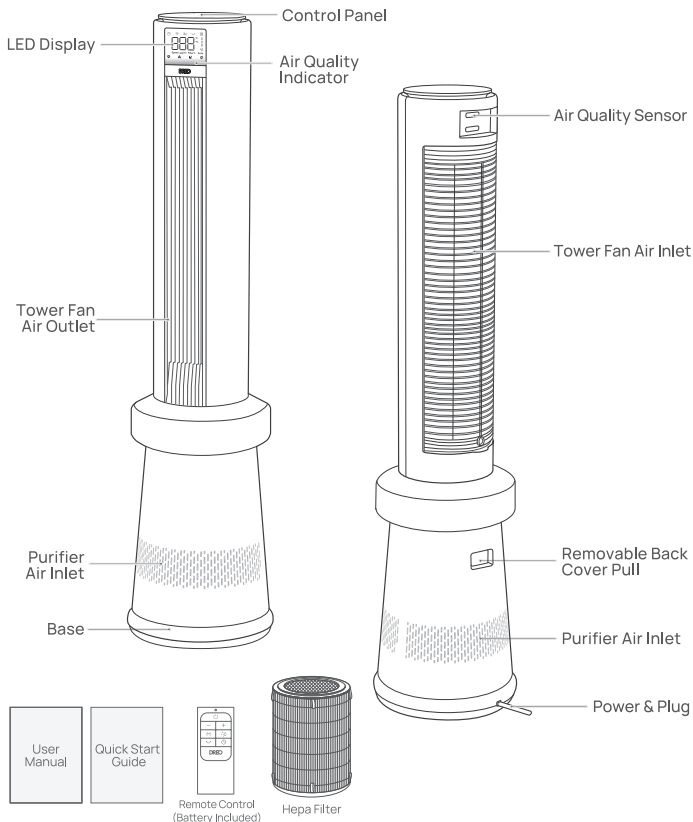
## Specifications

Model No.	DR-HTF010S
Input:	120V-60Hz
Rated Power	50W
Battery Type	CR2025 3V

# KNOWING YOUR SMART 2-IN-1 TOWER FAN

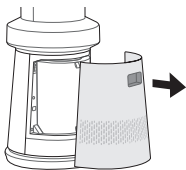
# 02

## Package Contents



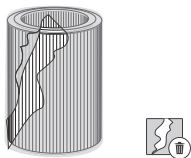
## Getting Started

1



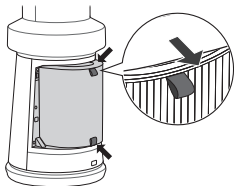
Locate the back handle and softly pull it to remove the back cover.

2



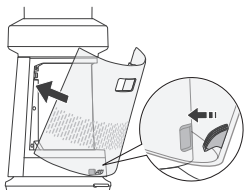
Remove the filter from its plastic packaging.

3



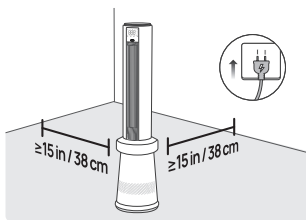
Put the filter back in position by making sure both straps are pointing outwards.

4



Align the tab on the bottom of back cover with the slot on the fan, and then close the back cover.

5



Place the 2-in-1 tower fan on a flat, stable and clear surface, plug the 2-in-1 tower fan into the power outlet.

6



After plugging your 2-in-1 tower fan, the air quality sensor will warm-up for 10 seconds, if turned on during this phase, lights will cycle and the screen will show a warm-up countdown. You can still operate the 2-in-1 tower fan during this phase.



# Control Panel



## Power Button

- On/Off
- Long press 10s to restore factory settings



## Tower Fan Mode Button

- Switch between Normal/Auto/Sleep/Breeze
- Long press 3s to mute/unmute



## Purification Mode Button

- Switch between 1-2-3-A-0 levels in Normal/Sleep/Auto Mode
- Switch between 1-2-3-A levels in Breeze Mode



## Increase Button

- Increase Tower Fan Speeds (1-12 Levels) excluding Breeze Mode



## Decrease Button

- Decrease Tower Fan Speeds (12-1 Levels) excluding Breeze Mode



## Information Button

- Switch between wind speed/PM2.5 data/filter life/ambient temperature
- Long press 5s to reset the Filter Change Reminder



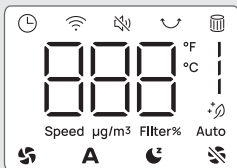
## Timer Button (0-24H)



## Oscillation Button

- 30°/60°/90°/120°
- Long press 5S to start network setting and device pairing

## LED Display



Timer



Wifi  
Connection



Mute



Oscillation



Filter Change  
Reminder



Purification  
Mode



Normal Mode



Auto Mode



Sleep Mode



Breeze Mode



**NOTE:** This 2-in-1 tower fan features auto-brightness. The display adapts automatically based on the ambient lighting conditions.

## Air Quality Indicator Light

Light Color	Air Quality Level
Blue	Excellent
Green	Good
Orange	Moderate
Red	Poor

# CONNECTING TO YOUR SMART 2-IN-1 TOWER FAN MC710S

# 03



Before connecting the appliance to your mobile device, please scan the QR code on the left or go to the app store and search "Dreo", then select and download the app.







Look for "MC710S" when connecting your new Smart 2-in-1 Tower Fan.



You can use the Dreo app to connect your smart 2-in-1 tower fan to **Amazon Alexa** or **Google Assistant**. Please follow the in-app instructions to set up your voice assistant.

NOTE: You must create a Dreo account to access voice assistants.

- 1** Launch Dreo and sign in or create account by following in-app instructions.
- 2** Enable Bluetooth on your mobile device and plug in your tower fan.
- 3** Hold the Oscillation button  for 5 seconds to start WiFi connection settings.  
(Tip: The WiFi icon  will keep flashing when pairing.)
- 4** Tap + **Add Device** and select **MC710S**.
- 5** Follow in-app instructions to complete WiFi connection.
- 6** You're now ready to control the appliance on your app.  
(Tip: To restart connection settings, hold the button  again for 10 seconds.)  
Long press 10 seconds power button  to unpair WiFi and restore factory settings.

# USING YOUR SMART 2-IN-1 TOWER FAN

# 04

## Working Modes

Tower Fan Mode (M) :



### Normal Mode

Runs at the fixed speed.



### Auto Mode

Wind/Purifying speed adapts to the ambient temperature/air quality.



### Sleep Mode

(Mute Auto On)

2-in-1 Tower Fan speed decreases every 30 minutes.

Speed decreases by three levels at most and will remain constant if at level 3, 2, or 1:

For level 12: 12 → 11 → 10 → 9

For level 11: 11 → 10 → 9 → 8

For level 10: 10 → 9 → 8 → 7

For level 9: 9 → 8 → 7 → 6

For level 8: 8 → 7 → 6

For level 7: 7 → 6 → 5

For level 6: 6 → 5 → 4

For level 5: 5 → 4 → 3

For level 4: 4 → 3

For level 3: 3

For level 2: 2

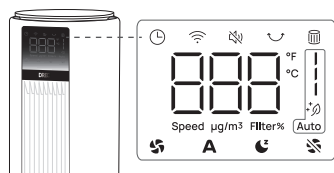
For level 1: 1



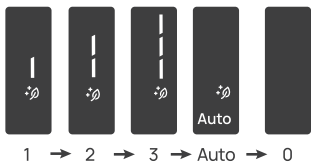
### Breeze Mode

Gentle wind.

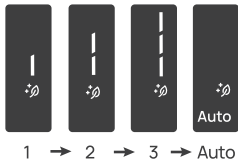
Purification Mode (P) :



Switch between 1-2-3-A-0 levels in Normal/Sleep/Auto Mode



Switch between 1-2-3-A levels in Breeze Mode



A: Speed adapts to the ambient air quality.  
0: No purifying the air.

## Additional Features



### Change Oscillation Angle

The oscillation angle can be set to 30/60/90/120 degrees.



### Timer

When the fan is ON/OFF, touch the timer button (🕒) repeatedly to set a timer from 1 to 24 hours. When the timer ends, the fan will stop/start running automatically. To cancel, set the time to 0 hour.

Note: When the auto off timer is enabled, display will return to fan speed after 3 seconds.



### Mute

Long press the mode button (M) 3 seconds on the control panel to turn on/off button sounds.



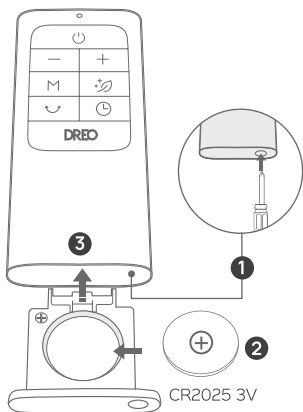
### Memory

If the fan is turned OFF or disconnected from power, it will operate under the previous settings (except the timer setting) when it is turned ON again.

## Remote Control



## Battery Replacement



- 1 Press the locking button to pop out the battery holder.
- 2 Replace with the same battery type with the (+) side facing up.
- 3 Push in the holder until securely locked into place.

Note: If the indicator on the remote control doesn't turn on any more, please consider replacing the battery.



## WARNING

- **INGESTION HAZARD:** This product contains a button cell or coin battery
- **DEATH** or serious injury can occur if ingested.
- A swallowed button cell or coin battery can cause Internal Chemical **Burns** in as little as **2 hours**.
- **KEEP** new and used batteries **OUT OF REACH of CHILDREN**
- **Seek immediate medical attention** if a battery is suspected to be swallowed or inserted inside any part of the body.



- a) Remove and immediately recycle or dispose of used batteries according to local regulations and keep away from children. Do NOT dispose of batteries in household trash or incinerate.
- b) Even used batteries may cause severe injury or death.
- c) Call a local poison control center for treatment information.
- d) Compatible battery type: CR2025.
- e) Battery nominal voltage: 3.0 Vdc
- f) Non-rechargeable batteries are not to be recharged.
- g) Do not force discharge, recharge, disassemble, heat above (rated temperature: 140°F) or incinerate. Doing so may result in injury due to venting, leakage or explosion resulting in chemical burns.
- h) Ensure the batteries are installed correctly according to polarity (+ and -).
- i) Do not mix old and new batteries, different brands or types of batteries, such as alkaline, carbon-zinc, or rechargeable batteries.
- j) Remove and immediately recycle or dispose of batteries from equipment not used for an extended period of time according to local regulations.
- k) Always completely secure the battery compartment. If the battery compartment does not close securely, stop using the product, remove the batteries, and keep them away from children.

# CLEANING AND MAINTENANCE

# 05

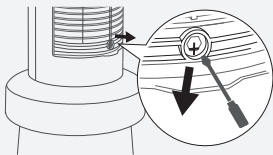


## WARNING

Turn off the appliance and unplug before any cleaning and maintenance.

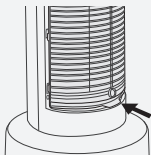
**Note: Please clean the rear grille monthly.**

1



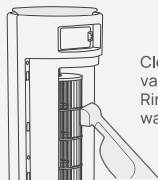
Remove the screw on the bottom of the rear grille with a Philips screwdriver.

2

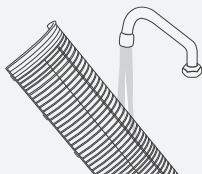


Push the grille inward and pull it out.

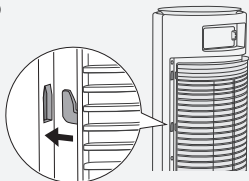
3



Clean the dust on blades using a vacuum cleaner or air duster.  
Rinse the rear grille under running water or with a clean, damp cloth.

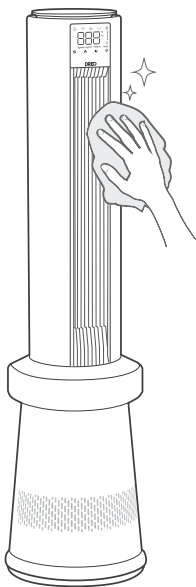


4



Dry up, then install the grille and the screw back in place, making sure the bottom pegs are fully inserted into the slots.





## Outer Surface

Gently wipe off the dust with a soft, dry cloth.



### CAUTION

1. Always unplug the fan before any cleaning or maintenance to avoid the risk of fire, electric shock, or injury to persons.
2. Do not immerse in water or get water inside the motor housing.
3. Do not use any chemical agents when cleaning the fan.
4. Store in a cool, dry place and cover it to protect from dust.

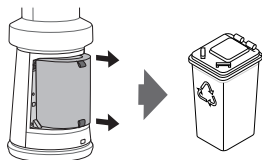
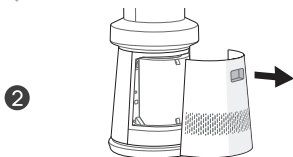
## Replacing the Filter

It's recommended to replace the filter every 6-8 months or when the filter change reminder alerts.



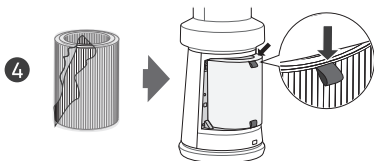
The Filter Change Reminder will flash when the filter needs to be replaced. Turn off and unplug the 2-in-1 tower fan.

Locate the back handle and softly pull it to remove the back cover of your 2-in-1 tower fan.



Pull the old filter out from the straps. Properly dispose the old filter after removing it from the 2-in-1 tower fan.

Remove the plastic wrap of your new filter then carefully place it within the 2-in-1 tower fan. Make sure both straps are pointing outwards and the filter is within the marked guidelines before closing the back cover.

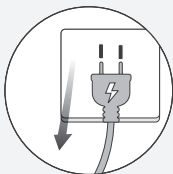


Plug in the 2-in-1 tower fan. Long press the **INFO** button for 5 seconds (until hearing the beep) to reset the filter change reminder.

Note: you can also reset the filter change reminder directly from the Dreo App.

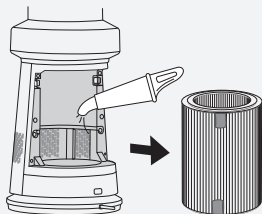
## Cleaning the Inside & Outside

1



Unplug the 2-in-1 tower fan before any cleaning and maintenance.

2



Remove the filter and clean the inside with a dust vacuum.

3



Wipe clean the housing with a dry, soft, non-abrasive cloth.

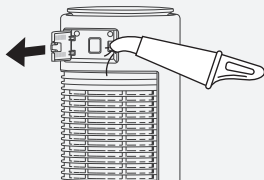
4



For optimal use, the outer pre-filter can be cleaned with a soft, dry brush once every 2-4 weeks.

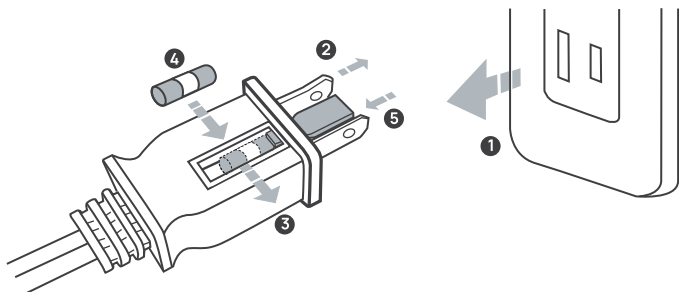
5

It is recommended to clean the AQ sensor on the back with a dust vacuum at least every three months.



## User Servicing Instructions (Fuse)

This appliance features a fused safety plug that protects against overload or short-circuit situations. If the fuse blows, please cut off power and follow the below instructions or consult a qualified electrician.



- 1** Grasp plug and remove from the receptacle or other outlet device. Do not unplug by pulling on cord.
- 2** Open fuse cover. Slide open fuse access cover on top of attachment plug towards blades.
- 3** Remove fuse carefully. Push the fuse from the other side to remove the fuse.
- 4** Risk of fire. Replace fuse only with 2.5 Amp, 125 Volt fuse.
- 5** Close fuse cover. Slide closed the fuse access cover on top of attachment plug.



### WARNING


Risk of fire. Do not replace attachment plug. Contains a safety device (fuse) that should not be removed. Discard product if the attachment plug is damaged.

## Related to the Filter

### Where can I buy a new filter?

1. Please purchase from Dreo official website: [www.dreo.com](http://www.dreo.com).

### I changed the filter, but the Filter Change Reminder is still on.

2. The Filter Change Reminder will not automatically reset. Please press and hold the  Filter Reset button to reset the reminder, the indicator will turn off after reset.

### The Filter Change Reminder has not turned on for a long period of time.

1. If you don't use the purification mode of your 2-in-1 tower fan often, the reminder will take longer to light up.

## Related to Use

### Why is my 2-in-1 tower fan not working?

1. Check if the power is connected, the power cord is damaged, or the electrical outlet is powered.
2. Make sure that there is enough space around the 2-in-1 tower fan.
3. Check if the filter packaging has been removed.
4. Fan speed will be low when auto mode is switched on. Try to switch to higher speed.
5. Replace the filter if the filter is clogged and overloaded.

## My 2-in-1 tower fan doesn't improve the air quality.

1. Check if the filter packaging has been removed.
2. Make sure the windows are closed as polluted air may continue coming in from outside of the windows.
3. The overloaded filter will make the fan work harder to pass the air through. Consider replacing the filter if it is clogged.
4. Do not place in crowded areas and corners.
5. Check if air outlet and inlet are obstructed.
6. When utilizing the purification mode, it is advisable to close doors and windows in order to prevent the infiltration of external sources of pollution.
7. For larger rooms, it is recommended to increase the purification level.

## Why is my 2-in-1 tower fan making a loud noise?

1. The higher mode will produce higher noise level as the fan is at the maximum speed to clean the air in the room more quickly.
2. Switch the 2-in-1 tower fan to sleep mode or lower fan speeds.

## Why is the Air Quality indicator is always red?

1. The Air Quality sensor may need to be cleaned.
2. Ultrasonic humidifiers usually release large particles with their mist. If a humidifier is placed near the sensor. The sensor may be detecting and reporting the large particles coming from the humidifier. Avoid using both appliances at the same time, or switch the 2-in-1 tower fan to another mode besides Auto Mode.
3. The rear grille may not be cleaned in a timely manner.

## The odor in the room is very strong, but the Air Quality Indicator is only green or blue.

1. The Air Quality Sensor detects PM 2.5 particles but cannot detect odors. If you feel that the indoor air odor is relatively strong, it is recommended to manually open the highest fan speed.

## My fan is shaky and wobbling!

1. Please the fan on a flat, level surface.

If your problem is not listed or still persists, please contact our Customer Support (see page 20).

# DREO CUSTOMER CARE

# 07

## Default 12-Month Warranty

This appliance is covered by Dreo warranty for 12 months from the date of its original purchase.

## Extend Your Warranty

Extend your warranty by registering your new appliance on our website <https://dreo.com/warranty>.

## The warranty will not apply in cases of:

- Accident, misuse, or repairs performed by unauthorized personnel.
- Any unit that has been tampered with or used for commercial purposes.
- Normal wear and tear of wearable parts.
- Use of force, damage caused by external influences.
- Damage caused by non-observance of the User Manual, e.g. connection to an unsuitable mains supply or noncompliance with the instructions.
- Partially or completely dismantled appliances.
- Defects caused by or resulting from damages from shipping or from repairs, service, or alteration to the product or any of its parts that have been performed by a repair person not authorized by DREO.

We can only provide after-sales service for products that are sold by DREO or DREO authorized retailers and distributors. If you have purchased your unit from a different place, please contact your seller for return and warranty issues.

## FCC STATEMENT

This device complies with Part 15 of the FCC Rules.

This equipment has been tested and found to comply with the limits for a Class B digital device, pursuant to Part 15 of the FCC Rules. These limits are designed to provide reasonable protection against harmful interference in a residential installation. This equipment generates, uses and can radiate radio frequency energy and, if not installed and used in accordance with the instructions, may cause harmful interference to radio communications. However, there is no guarantee that interference will not occur in a particular installation. Please note that changes or modifications of this product is not expressly approved by the party responsible for compliance could void the user's authority to operate the equipment. If this equipment does cause harmful interference to radio or television reception, which can be determined by turning the equipment off and on, the user is encouraged to try to correct the interference by one or more of the following measures:

- Reorient or relocate the receiving antenna.
- Increase the separation between the equipment and receiver.
- Connect the equipment into an outlet on a circuit different from that to which the receiver is connected.
- Consult the dealer or an experienced radio/TV technician for help.

This equipment complies with FCC radiation exposure limits set forth for an uncontrolled environment. This equipment should be installed and operated with a minimum distance of 20cm between the radiator & your body. This transmitter must not be co-located or operating in conjunction with any other antenna or transmitter.

Any changes or modifications not expressly approved by the party responsible for compliance could void the user's authority to operate the equipment.

This device complies with Part 15 of the FCC Rules. Operation is subject to the following two conditions(1) this device may not cause harmful interference, and (2) this device must accept any interference received, including interference that may cause undesired operation

Model No.: DR-HTF010S  
Rev\_1.2\_EN

### We're Here to Help!

 (888) 290-1688 Mon - Fri, 9:00 am-5:00 pm PST/PDT

 [www.dreo.com](http://www.dreo.com)

 [support@dreo.com](mailto:support@dreo.com)

 Shenzhen Hesung Innovation Technology Co., LTD

 26F, Bldg A7, Creative City, Shenzhen, China



MADE IN CHINA





[www.dreo.com](http://www.dreo.com)

## Looking for help?

Contact us to get expert support.



[support@dreo.com](mailto:support@dreo.com)



[\(888\) 290-1688](tel:(888)290-1688)



[www.dreo.com](http://www.dreo.com)

Mon - Fri, 9:00 am-5:00 pm PST/PDT