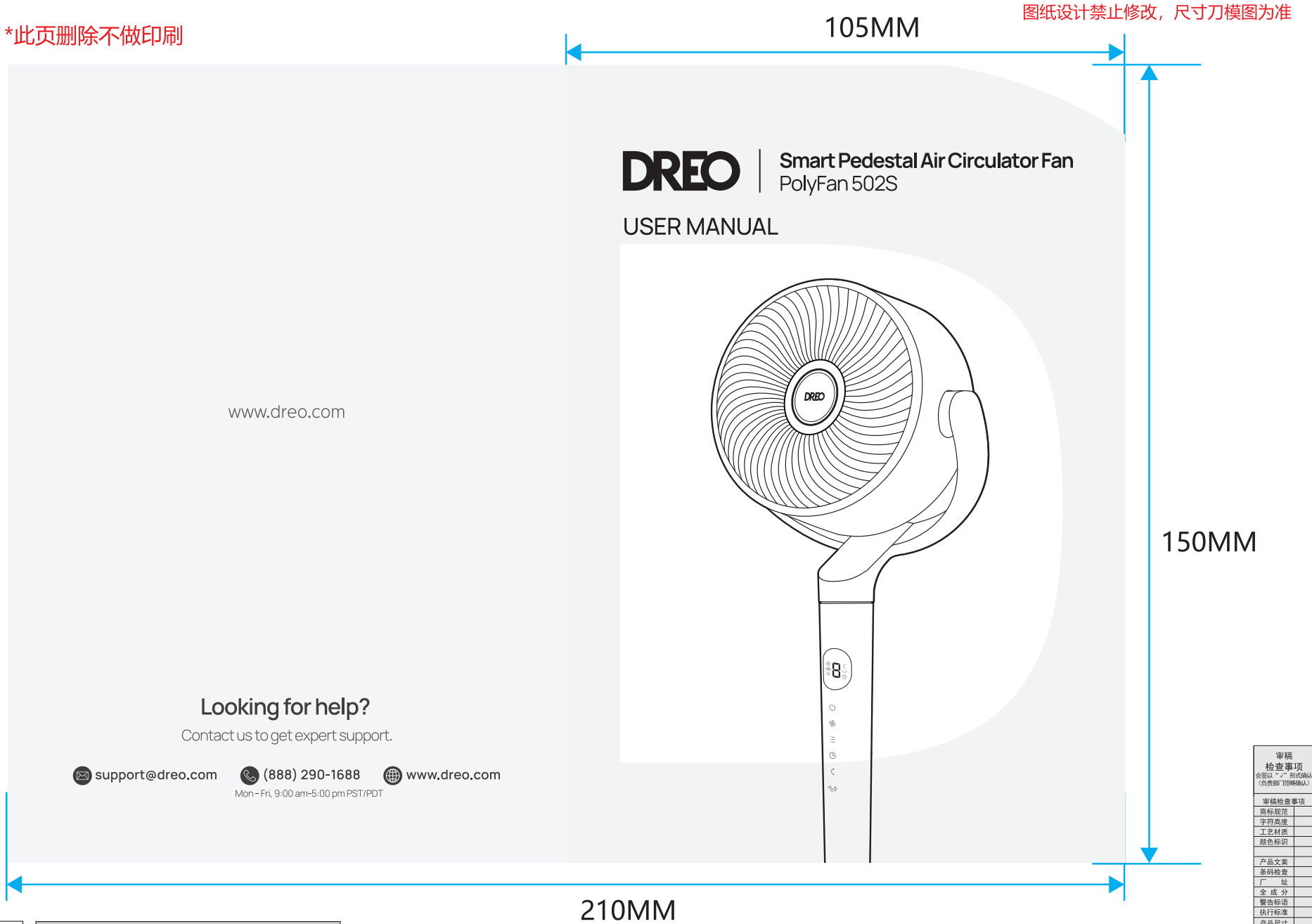


设计版本号	产品名称   Product name	比例   scale	日期   Date	设计师   Designer	审核   Audit	
Rev_V1_EN	DR-HPF002S_说明书	1: 1	20240305	Lori	Laura	
Hesung   Innovation 和生创新	材质印刷与 技术要求	封面封底:80g书纸 内页: 80g书纸 印刷要求: 双面印刷, 文字线图清晰 装订方式: 骑马钉装订	字体   Fonts	Manrope	尺寸   Size	105mm × 150mm

\*此页删除不做印刷



	裁切线
	正折线
	反折线
	出血位
	粘胶区域

<b>图层使用规范:</b>
1、备注信息图层为非印刷区域, 展示印刷物料基础信息。 2、刀板线、备注工艺、尺寸层展示印刷工艺部分。 3、画面信息层展示印刷展示图片与文字。 *电子文档为Adobe Illustrator制作
文件格式: model规格类目日期.AI (为可编辑原始文档) 文件格式: model规格类目日期.pdf (为文件转曲不可编辑文档)

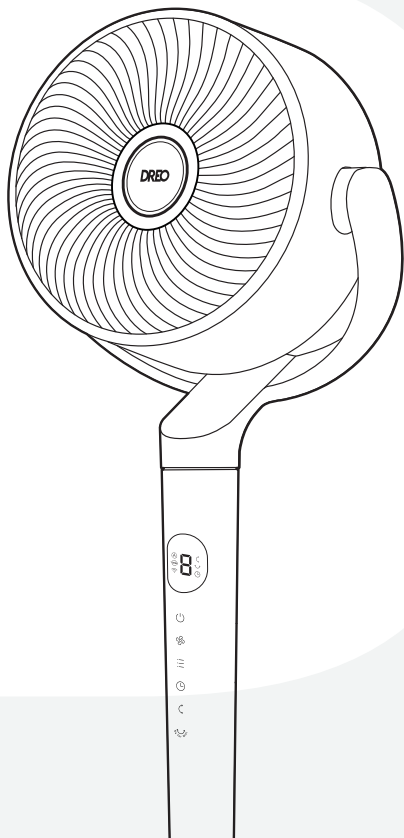
审核 检查事项 余量以“√”形式确认 (负责部门/日期/确认)
审核检查事项
规格规范
字符高度
工艺材质
颜色标识
产品文案
条码检查
厂址
金线分
警告标识
执行标准
产品尺寸
外/内箱尺寸
0EM信息*
产品包装信息
请相关部门确认产品、包装等信息!
*0EM信息: 委托方及被委托方 信息(名称、地址、 邮编、电话、生产 许可证、卫生许可 证)

设计师	审核	产品负责人	法规	采购
-----	----	-------	----	----

# DREO

Smart Pedestal Air Circulator Fan  
PolyFan 502S

## USER MANUAL



//

# Thanks for Choosing **DREO!**

Your support means the world to us. We hope you enjoy our product as much as we did creating it.

# CONTENTS

## 01

IMPORTANT SAFETY  
INSTRUCTIONS

1-2

---

## 02

ASSEMBLING YOUR  
PEDESTAL AIR  
CIRCULATOR

3-5

---

## 03

CONNECTING TO YOUR  
PEDESTAL AIR CIRCULATOR  
PolyFan 502S

6

---

## 04

KNOWING YOUR  
PEDESTAL AIR  
CIRCULATOR

7-8

---

## 05

USING YOUR PEDESTAL  
AIR CIRCULATOR

9-14

---

## 06

CLEANING  
AND MAINTENANCE

15-17

---

## 07

TROUBLESHOOTING

18

---

## 08

DREO CUSTOMER  
CARE

19-20

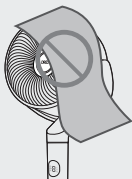
---

# IMPORTANT SAFETY INSTRUCTIONS

# 01



READ ALL CAUTION-ARY MARKINGS ON THE APPLIANCE AND SAFETY INSTRUCTIONS IN THE USER MANUAL BEFORE



**Do not** cover the air inlet and outlet while in operation.



**Do not** use the air circulator near flammables and combustibles.

## General Safety

1. Children shall not play with the appliance. Cleaning and maintenance shall not be performed by children without supervision.
2. Use the appliance as described in the user manual only. Any other use not recommended in the user manual may cause fire, electrical shock, or personal injury.
3. This appliance can be used by children aged above 8 years and persons with reduced physical, sensory or mental capabilities or lack of experience and knowledge if they have been given supervision or instruction concerning use of this appliance in a safe way and understand the hazards involved.

## Operation Safety

1. Place the appliance on a flat, dry surface before use.
2. **Do not** immerse in water and any other liquids.
3. **Do not** use the appliance until the base is installed.
4. **Do not** insert your fingers, pencil and any other objects into the grilles under any circumstances.
5. **Do not** dismantle, repair, or modify. All servicing should be performed by qualified personnel.
6. **Do not** operate the unit close to the curtain. Do not hang foreign objects on the grille to prevent damaging the balance of the fan or rotational structure.
7. **Do not** operate the fan under overly humid, high-temperature, dusty environment or the place where acid or alkali is stored.
8. Fans should never blow directly on infants, the elderly, and patients for a long time.

## Electricity Safety

### WARNING:

1. Make sure that the voltage of your electricity supply is the same as that indicated on the appliance.
2. Always unplug before cleaning or leaving the appliance unused for a long period of time. Keep your hands dry when plugging/unplugging.
3. Do not operate any air circulator with a damaged cord or plug. Discard air circulator or return to an authorized service facility for examination and/or repair.
4. Do not run cord under carpeting. Do not cover cord with throw rugs, runners, or similar coverings. Do not route cord under furniture or appliances. Arrange cord away from traffic area and where it will not be tripped over.
5. **WARNING:** To reduce the risk of fire or electric shock, do not use this air circulator with any solid-state speed control device.
6. Use 24V/1A, Class 2 power adapter only. Turn off the appliance before plugging.
7. **WARNING:** To reduce the risk of fire, electric shock or injury to persons, do not use replacement parts that have not been recommended by the manufacturer (e.g. parts made at home using a 3D printer).
8. If the supply cord is damaged, it must be replaced by the manufacturer or its service agent or a similarly qualified person in order to avoid a hazard.

# FOR HOUSEHOLD USE ONLY READ AND SAVE THESE INSTRUCTIONS

## Gentle Reminder:



Check the appliance regularly and refer to TROUBLESHOOTING or contact our customer support if it shows any of the following signs:

- Power cord or plug is damaged.
- Loud noise, unusual smell or excessive heat.

## Specifications

Model No.:	DR-HPF002S
Power Supply	24V=1.0A
Rated Power	24W
Power Adapter	<b>Input:</b> 120V~60Hz 0,6A <b>Output:</b> 24V = 1.0A
Battery Type	CR2025 3V

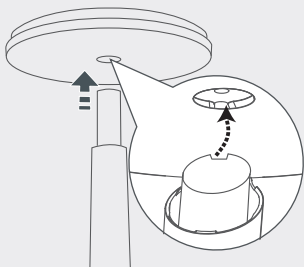
# ASSEMBLING YOUR PEDESTAL AIR CIRCULATOR

# 02

## Assembly Instructions

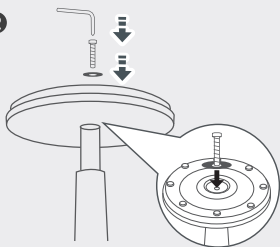
When using the appliance for the first time, remove the wraps and attach the parts by following the steps below.

1



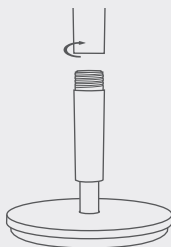
Turn the column upside down. Push the column into the base by aligning the cutout on the bottom of column with the jutting point in the middle of the base.

2



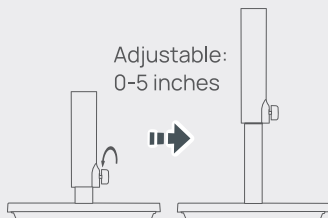
Thread the screw through the flat washer, insert into the base, and use the included screwdriver to drive the screw into the bottom of the column.

3



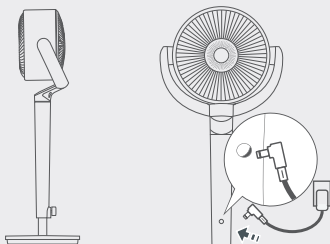
After successfully installing the pedestal onto the column, turn them right side up. Then rotate the fan body onto the column until tightened.

4

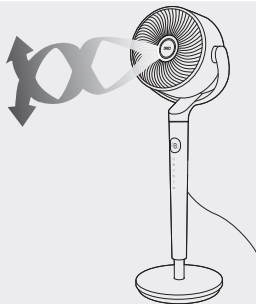


Hold the main body while rotating the Adjustment Collar counterclockwise to raise or lower the pedestal air circulator fan to the desired height.

5



Tighten the adjustment collar by rotating clockwise. Plug the power adapter into the power (located at the back of the pedestal air circulator fan), and into the power outlet.



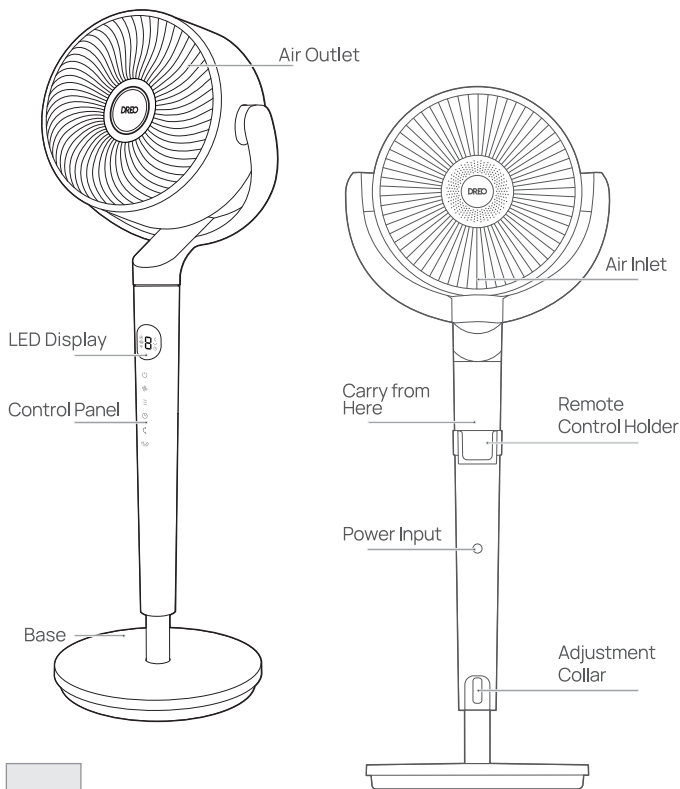
## CAUTION

Do not operate the pedestal air circulator fan if the base has not been installed.

Please exercise caution and handle the base with care during installation.



# Package Contents



User Manual

Quick Start Guide



Remote Control (Battery Included)



Power Adapter



Remote Control Holder



Screw for Base



Screwdriver for Base



Flat Washer

# CONNECTING TO YOUR PEDESTAL AIR CIRCULATOR PolyFan 502S

# 03



Before connecting the appliance to your mobile device, please scan the QR code on the left or go to the app store and search “Dreo”, then select and download the app.






Look for “PolyFan 502S” when connecting your new pedestal air circulator.



You can use the Dreo app to connect your smart pedestal air circulator to **Amazon Alexa** or **Google Home**. Please follow the in-app instructions to set up your voice assistant.

*NOTE: You must create a Dreo account to access voice assistants.*

- 1 Launch Dreo and sign in or create account by following in-app instructions.
- 2 Enable Bluetooth on your mobile device and plug in your air circulator.
- 3 Hold the Oscillation button  for 5 seconds to start WiFi connection settings.  
(Tip: The WiFi icon  will keep flashing when pairing.)
- 4 Tap+ **Add Device** and select **PolyFan 502S**.
- 5 Follow in-app instructions to complete WiFi connection.
- 6 You're now ready to control the appliance on your app.  
(Tip: To restart connection settings, hold the Oscillation button  again for 5 seconds.)

Long press 10 seconds power button  to unfair WiFi and restore factory settings.

# KNOWING YOUR PEDESTAL AIR CIRCULATOR

# 04

## Control Panel



### Power Button

- Turn power on/off
- Long press 10 seconds to reset to factory settings



### Fan Speed Button

- 1-8 Levels



### Mode Button

- Switch between Normal/Auto/Turbo
- Long press 3s to mute/unmute



### Timer Button

- Select to set a timer (0-8h)



### Vertical Oscillation Button

- Sweep airflow vertically (0°/30°/60°/90°)



### Horizontal Oscillation Button

- Sweep airflow horizontally (0°/30°/60°/90°/120°)
- Long press 5 seconds to start network settings and device pairing

## LED Display



Auto Mode



Turbo Mode



Wifi Connection



Fan Speed/Timer  
Hour



Vertical  
Oscillation



Horizontal  
Oscillation

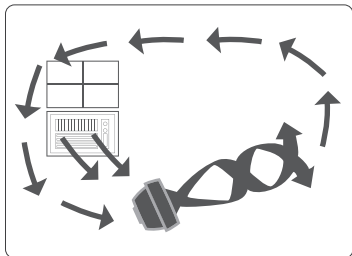


Timer

# USING YOUR PEDESTAL AIR CIRCULATOR

# 05

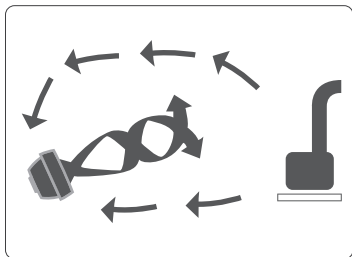
## Getting the Most out of Your Pedestal Air Circulator Fan



### Summer:

#### Use with Air Conditioner

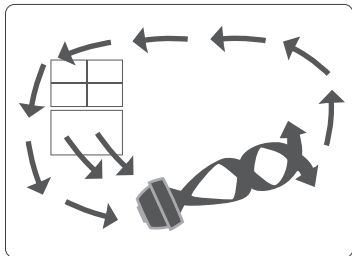
Position the pedestal air circulator fan in front of your AC to circulate cold air and provide better cooling.



### Winter:

#### Use with Heater

Send the heat to corner of the room and circulate warm air faster.

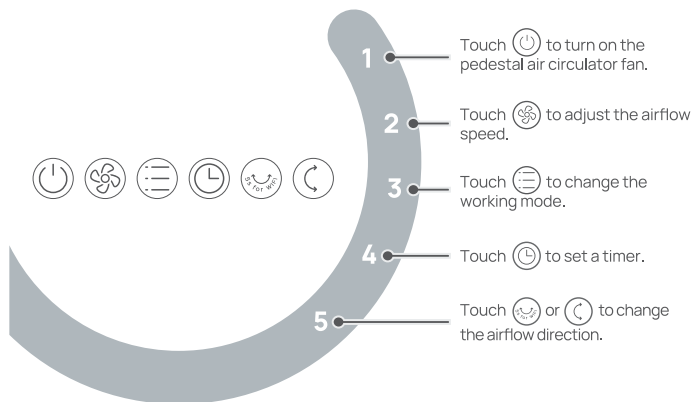


### Spring & Fall:

#### Circulation

Make the indoors as fresh and pleasant as the outdoors.

# General Operations



## Working Modes (Press on the remote)



### Normal Mode

Pedestal air circulator fan runs at the fixed speed.



### Auto Mode

Pedestal air circulator fan speed adapts to the ambient temperature.



### Turbo Mode

Pedestal air circulator fan runs at the maximum speed.



### Natural Mode

(Available in the Dreo app)

Pedestal air circulator fan runs at alternating speeds.



### Custom Mode

(Available in the Dreo app)

Pedestal air circulator fan speed changes according to temperatures or time you desire.



### Sleep Mode

(Available in the Dreo app)

Mute auto on.

Pedestal air circulator fan speed decreases every 30 minutes. Speed decreases by two levels at most and will remain constant if at level 3, 2, or 1:

For level 8: 8 → 7 → 6

For level 7: 7 → 6 → 5

For level 6: 6 → 5 → 4

For level 5: 5 → 4 → 3

For level 4: 4 → 3

For level 3: 3


For level 2: 2

For level 1: 1

## Additional Features





### Timer

When the fan is ON/OFF, touch the timer button  repeatedly to set a timer from 1 to 8 hours. When the timer ends, the fan will stop/start running automatically. To cancel, set the time to 0 hour.

*Note: When the auto off timer is enabled, display will return to fan speed after 3 seconds.  
Display will show 8 if the timer is beyond 8 hours. To set a timer beyond 8 hours, please go to the Dreo app.*



### Child Lock

Long press the Horizontal Oscillation button  and Vertical Oscillation button  at the same time for 3 seconds to turn on/off Child Lock.

*Note: Child Lock doesn't apply to operations from the remote control and the Dreo app. You can also turn off Child Lock by re-plugging in, resetting to factory settings, or through the Dreo app.*



### Memory

If the fan is turned OFF or disconnected from power, it will operate under the previous settings (except the Timer setting) when it is turned ON again.



### Countdown Display

When long pressing buttons for Factory Reset, Child Lock, and Mute, a countdown will show on the display accordingly.



### Firmware Update

Check the firmware version on the Dreo app and update regularly for the air circulator to work more efficiently.

 Display will show "U" during the update process.  
Do not operate until the update is completed.

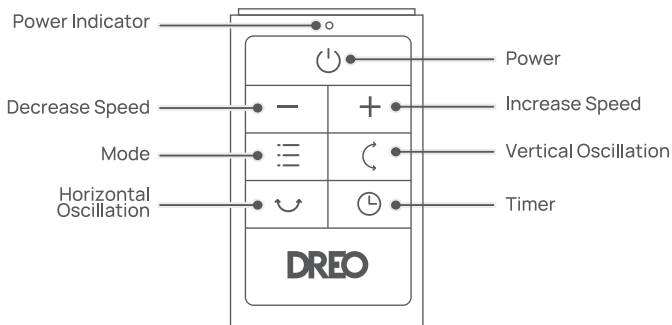


### Display Auto Off

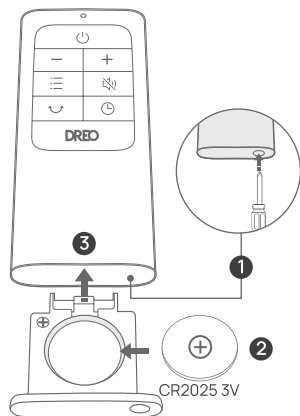
Display turns off after 1 minute (after 5 seconds in sleep mode). Wake up the display with any button.

To disable this feature, please go to the Dreo app.

## Remote Control



## Battery Replacement



- 1 Press the locking button to pop out the battery holder.
- 2 Replace with the same battery type with the (+) side facing up.
- 3 Push in the holder until securely locked into place.

*Note: If the indicator on the remote control doesn't turn on any more, please consider replacing the battery.*





## WARNING

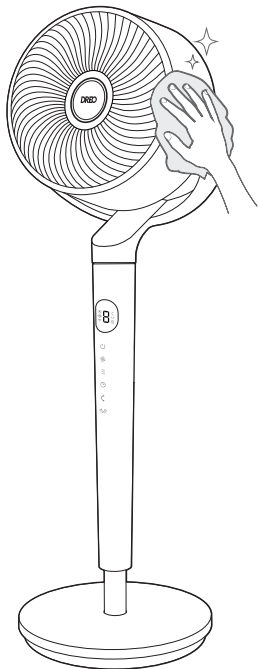
- **INGESTION HAZARD:** This product contains a button cell or coin battery
- **DEATH** or serious injury can occur if ingested.
- A swallowed button cell or coin battery can cause Internal Chemical **Burns** in as little as **2 hours**.
- **KEEP** new and used batteries **OUT OF REACH of CHILDREN**
- **Seek immediate medical attention** if a battery is suspected to be swallowed or inserted inside any part of the body.



- a) Remove and immediately recycle or dispose of used batteries according to local regulations and keep away from children. Do NOT dispose of batteries in household trash or incinerate.
- b) Even used batteries may cause severe injury or death.
- c) Call a local poison control center for treatment information.
- d) Compatible battery type: CR2025.
- e) Battery nominal voltage: 3.0 Vdc
- f) Non-rechargeable batteries are not to be recharged.
- g) Do not force discharge, recharge, disassemble, heat above (rated temperature: 140 °F) or incinerate. Doing so may result in injury due to venting, leakage or explosion resulting in chemical burns.
- h) Ensure the batteries are installed correctly according to polarity (+ and -).
- i) Do not mix old and new batteries, different brands or types of batteries, such as alkaline, carbon-zinc, or rechargeable batteries.
- j) Remove and immediately recycle or dispose of batteries from equipment not used for an extended period of time according to local regulations.
- k) Always completely secure the battery compartment. If the battery compartment does not close securely, stop using the product, remove the batteries, and keep them away from children.

# CLEANING AND MAINTENANCE

# 06



## Outer Surface

Gently wipe off the dust with a soft, dry cloth.

## Base

The base can be disassembled in the reverse order of assembly.

## CAUTION



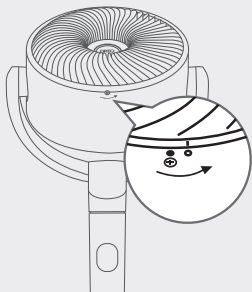
1. Always unplug the fan before any cleaning or maintenance to avoid the risk of fire, electric shock, or injury to persons.
2. Do not immerse in water or get water inside the motor housing.
3. Do not use any chemical agents when cleaning the fan.
4. Store in a cool, dry place and cover it to protect from dust.



## WARNING

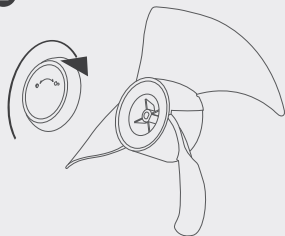
To reduce the risk of electrical shock and injury to persons, turn off and unplug the appliance before any cleaning and maintenance.

1



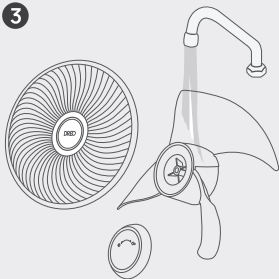
Remove the screw on the front grille, rotate the grille counterclockwise to take off.

2



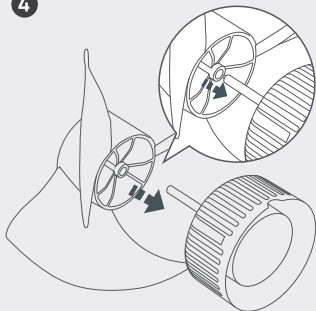
Remove the blade cap by rotating it as shown and take the blade assembly out of the shaft.

3



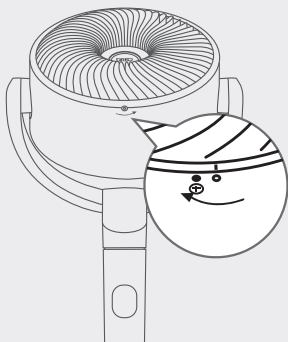
Rinse cap, blades, and grille under running water or with a clean, damp cloth.

4



Dry up all parts, and insert the blade assembly back into the shaft by aligning the D-shaped points on the center.

5



Align the point on the front grille with the right point on the casing, then rotate the grille clockwise and install the screw back in place.

## My pedestal air circulator fan won't turn on!

Make sure that the cord is connected to a powered outlet and the mains voltage corresponds with the voltage indicated on the pedestal air circulator fan.

## My pedestal air circulator fan is shaky and wobbling!

1. Place the pedestal air circulator fan on a flat, level surface.
2. Incorrect installation might also cause shakiness. Please refer to the assembly instructions in **page 3-4**.

## My pedestal air circulator fan is making vibration and noise!

1. Place the pedestal air circulator fan on a flat, level surface.
2. Be sure not to insert anything into the air inlet and outlet.

If your problem is not listed or still persists, please contact our Customer Support (see page 20)

# DREO CUSTOMER CARE 08

## Default 12-Month Warranty

This appliance is covered by Dreo warranty for 12 months from the date of its original purchase.

## Extend Your Warranty

Extend your warranty by registering your new appliance on our website

<https://dreo.com/warranty>.

### The warranty will not apply in cases of:

1. Accident, misuse, or repairs performed by unauthorized personnel.
2. Any unit that has been tampered with or used for commercial purposes.
3. Normal wear and tear of wearable parts.
4. Use of force, damage caused by external influences.
5. Damage caused by non-observance of the User Manual, e.g. connection to an unsuitable mains supply or noncompliance with the instructions.
6. Partially or completely dismantled appliances.
7. Defects caused by or resulting from damages from shipping or from repairs, service, or alteration to the product or any of its parts that have been performed by a repair person not authorized by Dreo.

We can only provide after-sales service for products that are sold by Dreo or Dreo authorized retailers and distributors. If you have purchased the appliance from a different place, please contact your seller for return and warranty issues.

## FCC STATEMENT

This device complies with Part 15 of the FCC Rules. Operation is subject to the following two conditions: (1) this device may not cause harmful interference, and (2) this device must accept any interference received, including interference that may cause undesired operation.

Please note that changes or modifications of this product is not expressly approved by the party responsible for compliance could void the user's authority to operate the equipment.

NOTE: This equipment has been tested and found to comply with the limits for a Class B digital device, pursuant to Part 15 of the FCC Rules. These limits are designed to provide reasonable protection against harmful interference in a residential installation. This equipment generates, uses and can radiate radio frequency energy and, if not installed and used in accordance with the instructions, may cause harmful interference to radio communications. However, there is no guarantee that interference will not occur in a particular installation.

If this equipment does cause harmful interference to radio or television reception, which can be determined by turning the equipment off and on, the user is encouraged to try to correct the interference by one or more of the following measures:

- Reorient or relocate the receiving antenna.
- Increase the separation between the equipment and receiver.
- Connect the equipment into an outlet on a circuit different from that to which the receiver is connected.
- Consult the dealer or an experienced radio/TV technician for help.

This equipment complies with FCC radiation exposure limits set forth for an uncontrolled environment. This equipment should be installed and operated with a minimum distance of 20cm between the radiator & your body. This transmitter must not be co-located or operating in conjunction with any other antenna or transmitter.

Model No.: DR-HPF002S  
Rev\_1.1\_EN

### We're Here to Help!

 (888) 290-1688 (Mon - Fri, 9:00 am-5:00 pm PST/PDT)

 [www.dreo.com](http://www.dreo.com)

 [support@dreo.com](mailto:support@dreo.com)

 Shenzhen Hesung Innovation Technology Co., LTD

 26F, Bldg A7, Creative City, Shenzhen, China



MADE IN CHINA



**Intertek**  
5018396



[www.dreo.com](http://www.dreo.com)

## Looking for help?

Contact us to get expert support.



[support@dreo.com](mailto:support@dreo.com)



[\(888\) 290-1688](tel:(888)290-1688)



[www.dreo.com](http://www.dreo.com)

Mon - Fri, 9:00 am-5:00 pm PST/PDT