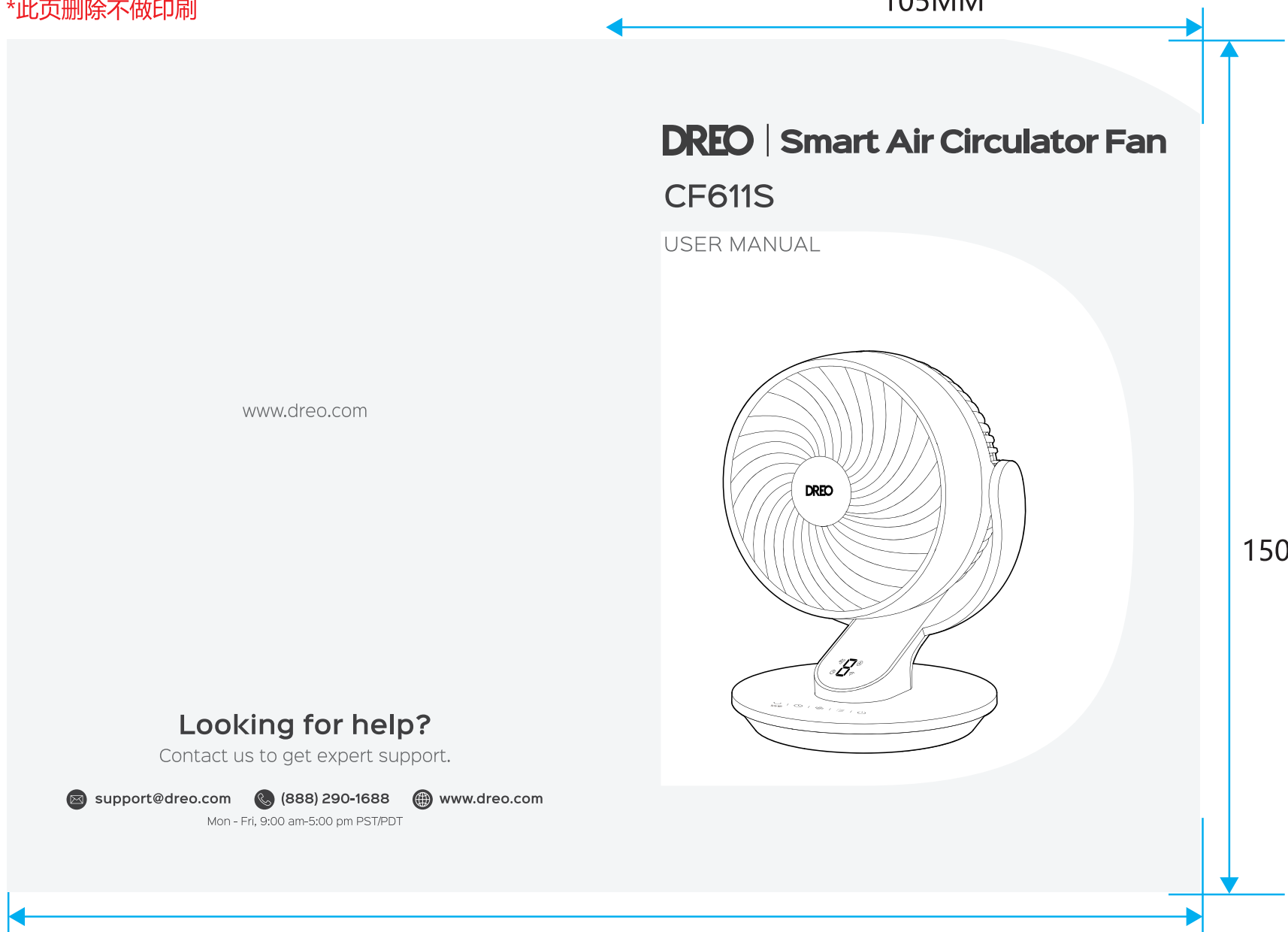


设计版本号	产品名称 Product name	比例 scale	日期 Date	设计师 Designer	审核 Audit	
Rev_1.0_EN	DTAF01S_美规线下_说明书	1:1	230811	beryl		
Hesung Innovation 和创新	材质印刷与 技术要求	封面封底:80g书纸 内页:80g书纸 印刷要求:双面印刷,文字线图清晰 装订方式:骑马钉装订	字体 Fonts	Manrope	尺寸 Size	105mm × 150mm

*此页删除不做印刷

图纸设计禁止修改,尺寸刀模图为准



	裁切线
	正折线
	反折线
	出血位
	粘胶区域

图层使用规范:	
1、备注信息图层为非印刷区域,展示印刷物料基础信息。	
2、刀板线、备注工艺、尺寸层展示印刷工艺部分。	
3、画面信息层展示印刷展示图片与文字。	
*电子文档为Adobe Illustrator制作	
文件格式: model规格类目日期.AI (为可编辑原始文档)	
文件格式: model规格类目日期.pdf (为文件转曲不可编辑文档)	

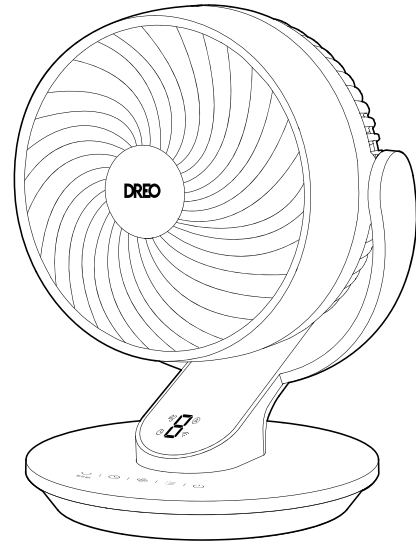
审核	检查事项
会议以“?”形式确认 (负责部/页/项/内容)	
审核检查事项	
商标规范	
字符高度	
工艺材质	
颜色标识	
产品文案	
条码检查	
厂址	
全成分	
警告标语	
执行标准	
产品尺寸	
外/内箱尺寸	
OEM信息*	
产品包装信息	
请相关部门确认产品、包装等信息!	
*OEM信息: 委托方及被委托方信息 (名称、地址、邮编、电话、生产许可证、卫生许可证)	

设计师	审核	产品负责人	法规	采购
-----	----	-------	----	----

DREO | Smart Air Circulator Fan CF611S

USER MANUAL

www.dreo.com



Looking for help?

Contact us to get expert support.

 support@dreo.com  (888) 290-1688  www.dreo.com

Mon - Fri, 9:00 am-5:00 pm PST/PDT

”

Thanks for Choosing DREO!

Your support means the world to us. We hope you enjoy our product as much as we did creating it.

CONTENTS

1

**IMPORTANT SAFETY
INSTRUCTIONS**

1-3

3

**CONNECTING TO
YOUR AIR CIRCULATOR
FAN CF611S**

7

5

**CLEANING AND
MAINTENANCE**

13-15

7

**DREO CUSTOMER
CARE**

17

2

**KNOWING YOUR
AIR CIRCULATOR
FAN**

4-6

4

**USING YOUR AIR
CIRCULATOR FAN**

8-12

6

TROUBLESHOOTING

16

IMPORTANT SAFETY INSTRUCTIONS



READ ALL CAUTIONARY MARKINGS ON THE APPLIANCE AND SAFETY INSTRUCTIONS IN THE USER MANUAL BEFORE USE.



Do not cover the air inlet and outlet while in operation.



Do not use the air circulator near flammables and combustibles.

General Safety

1. Children shall not play with the appliance. Cleaning and maintenance shall not be performed by children without supervision.
2. Use the appliance as described in the user manual only. Any other use not recommended in the user manual may cause fire, electrical shock, or personal injury.
3. This appliance can be used by children aged above 8 years and persons with reduced physical, sensory or mental capabilities or lack of experience and knowledge if they have been given supervision or instruction concerning use of this appliance in a safe way and understand the hazards involved.

Operation Safety

1. Place the appliance on a flat, dry surface before use.
2. **Do not** immerse in water and any other liquids.
3. **Do not** use the appliance until the base is installed.
4. **Do not** insert your fingers, pencil and any other objects into the grilles under any circumstances
5. **Do not** dismantle, repair, or modify. All servicing should be performed by qualified personnel.
6. **Do not** operate the unit close to the curtain. **Do not** hang foreign objects on the grille to prevent damaging the balance of the fan or rotational structure.
7. **Do not** operate the fan under overly humid, high-temperature, dusty environment or the place where acid or alkali is stored.

8. Fans should never blow directly on infant, the elderly and patients for a long time.

Electricity Safety

WARNING:

1. Make sure that the voltage of your electricity supply is the same as that indicated on the appliance.
2. Always unplug before cleaning or leaving the appliance unused for a long period of time. Keep your hands dry when plugging / unplugging.
3. Do not operate any air circulator with a damaged cord or plug. Discard air circulator or return to an authorized service facility for examination and/or repair.
4. Do not run cord under carpeting. Do not cover cord with throw rugs, runners, or similar coverings. Do not route cord under furniture or appliances. Arrange cord away from traffic area and where it will not be tripped over.
5. **WARNING:** To reduce the risk of fire or electric shock, do not use this air circulator with any solid-state speed control device.
6. This appliance employs overload protection (fuse). A blown fuse indicates an overload or short-circuit situation. If the fuse blows, unplug the product from the outlet. Replace the fuse as per the user servicing instructions and check the appliance. If the replacement fuse blows, a short-circuit may be present and the appliance should be discarded or returned to an authorized service facility for examination and/or repair.
7. This appliance has a polarized plug (one blade is wider than the other). To reduce the risk of electric shock, this plug is intended to fit in a polarized outlet only one way. If the plug does not fit fully in the outlet, reverse the plug. If it still does not fit, contact a qualified electrician. Do not attempt to defeat this safety feature.
WARNING: To reduce the risk of fire, electric shock or injury to persons, do not use replacement parts that have not been recommended by the manufacturer (e.g. Parts made at home using a 3D printer).

FOR HOUSEHOLD USE ONLY READ AND SAVE THESE INSTRUCTIONS

Gentle Reminder:



Check the appliance regularly and refer to TROUBLESHOOTING or contact our customer support if it shows any of the following signs:

- Power cord or plug is damaged.
- Loud noise, unusual smell or excessive heat.

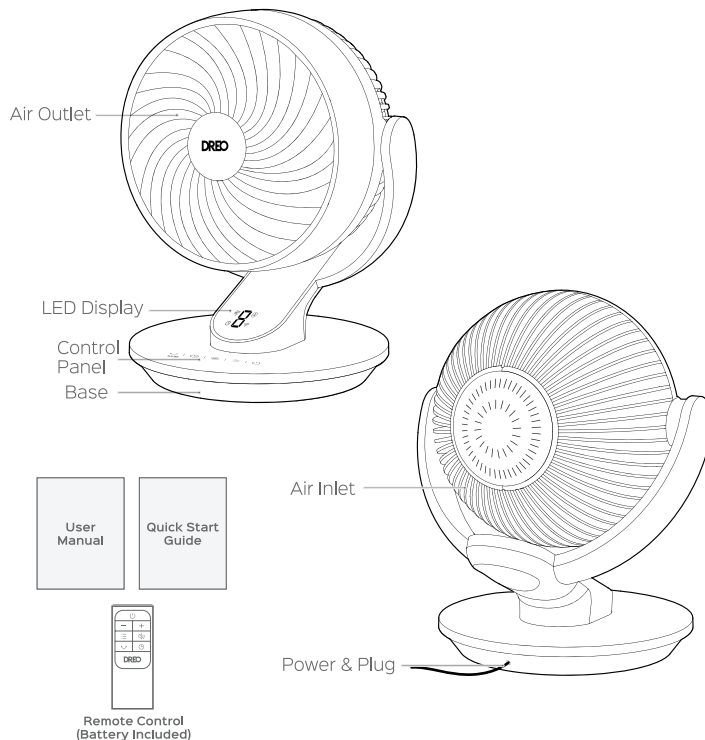
Specifications

Model No.	DTAF01S
Input	AC 120V 60Hz
Rated Power	52W
Battery Type	CR2025 3V

KNOWING YOUR AIR CIRCULATOR FAN

2

Package Contents



Control Panel



Power Button

- Turn power on/off
- Long press 10 seconds to reset to factory settings



Mode Button

- Switch between Normal/Auto Mode
- Long press to mute/unmute
- Exit Natural/Sleep/Custom Mode



Fan Speed Button

- Adjust airflow speed (1-4 levels)
- Exit Custom Mode



Timer Button

Select to set a timer (0-8h)



5s for WiFi

Oscillation Button

- Adjust airflow direction (90°)
- Long press 5s to start WiFi connection settings and device pairing

LED Display



Normal
Mode



Fan Speed /
Timer Hour



Auto Mode



Timer



WiFi
Connection

CONNECTING TO YOUR AIR CIRCULATOR FAN CF611S

3



Before connecting the appliance to your mobile device, please scan the QR code on the left or go to the app store and search "Dreo", then select and download the app.






Look for "CF611S" when connecting your new air circulator fan.



You can use the Dreo app to connect your smart air circulator fan to **Amazon Alexa** or **Google Assistant**. Please follow the in-app instructions to set up your voice assistant.

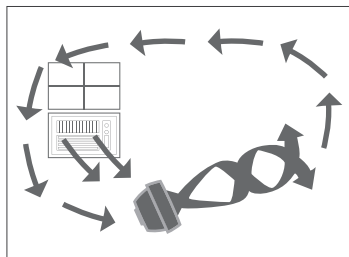
NOTE: You must create a Dreo account to access voice assistants.

- 1 Launch Dreo and sign in or create account by following in-app instructions.
- 2 Enable Bluetooth on your mobile device and plug in your fan.
- 3 Tap + **Add Device** and select **CF611S**.
- 4 Hold the Oscillation button  for 5 seconds to start WiFi connection settings.
(Tip: The WiFi icon  will keep flashing when pairing.)
- 5 Follow in-app instructions to complete WiFi connection.
- 6 You're now ready to control the appliance on your app.
(Tip: To restart connection settings, hold the Oscillation button  again for 5 seconds.)

USING YOUR AIR CIRCULATOR FAN

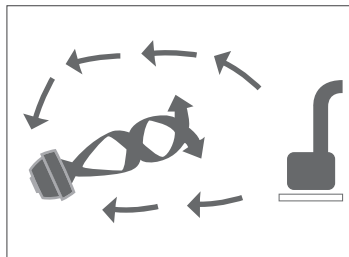
4

Getting the Most out of Your Air Circulator



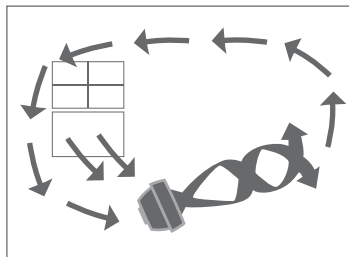
Summer: Use with Air Conditioner

Position the air circulator in front of your AC to circulate cold air and provide better cooling.



Winter: Use with Heater

Send the heat to corner of the room and circulate warm air faster.



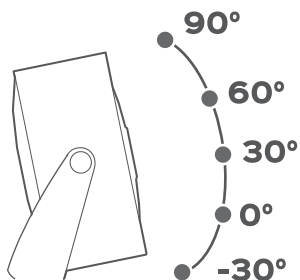
Spring & Fall: Circulation

Make the indoors as fresh and pleasant as the outdoors.

General Operations



- 1 Touch to turn on the air circulator fan.
- 2 Touch to adjust the airflow speed.
- 3 Touch to change the airflow direction.
- 4 Touch to set a timer.
- 5 Touch choose a working mode.



Tilt the fan head by hand to the desired angle.

Working Modes



Normal Mode

Fan runs at the fixed speed.



Auto Mode

Fan speed adapts to the ambient temperature.



Natural Mode (Available in the Dreo app)

Fan runs at alternating speeds.



Custom Mode (Available in the Dreo app)

Fan speed changes according to temperatures or time you desire.



Sleep Mode (Available in the Dreo app)

Mute auto on.

Fan speed decreases every 30 minutes.

Speed decreases by two levels at most and will remain constant if at level 1:

For level 4: 4 → 3 → 2

For level 3: 3 → 2 → 1

For level 2: 2 → 1

For level 1: 1

Additional Features



Timer

When the fan is ON/OFF, touch the timer button repeatedly to set a timer from 1 to 8 hours. When the timer ends, the fan will stop/start running automatically. To cancel, set the time to 0 hour.

Note: When the auto off timer is enabled, display will return to fan speed after 3 seconds.



Child Lock

Long press the Oscillation button and Timer button at the same time for 3 seconds to turn on/off Child Lock. "L" will flash on the display when turned on/off.

Note: Child Lock doesn't apply to the remote control. You can also turn off Child Lock by re-plugging in or through the Dreo app.



Memory

If the fan is turned OFF or disconnected from power, it will operate under the previous settings (except the timer setting) when it is turned ON again.




Countdown Display

When long pressing buttons for Factory Reset, Child Lock, and Mute, a countdown will show on the display accordingly.



Firmware Update

Check the firmware version on the Dreo app and update regularly for the air circulator to work more efficiently.

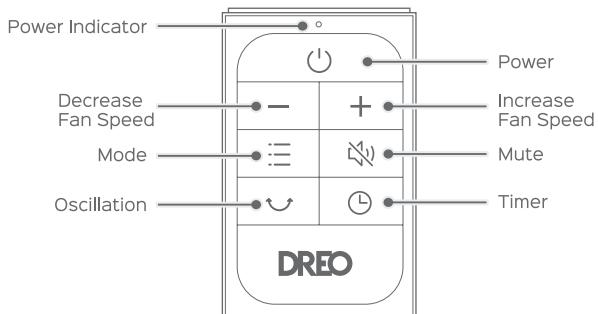
 Display will show “

Display Auto Off

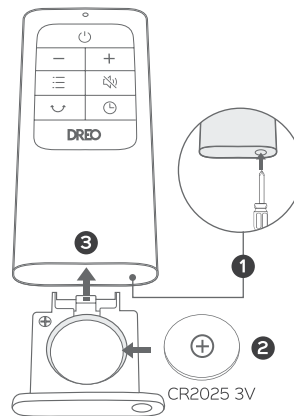
Display turns off after 1 minute (after 5 seconds in sleep mode).

Wake up the display with any button.

Remote Control



Battery Replacement



- 1 Press the locking button to pop out the battery holder.
- 2 Replace with the same battery type with the (+) side facing up.
- 3 Push in the holder until securely locked into place.

Note: If the indicator on the remote control doesn't turn on any more, please consider replacing the battery.



WARNING

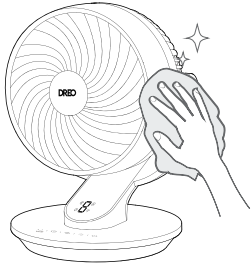
Chemical Burn Hazard. Keep batteries away from children.

This product contains a lithium button/coin cell battery. If a new or used lithium button/coin cell battery is swallowed or enters the body it can cause severe internal burns and can lead to death in as little as 2 hours. Always completely secure the battery compartment. If the battery compartment does not close securely, stop using the product, remove the battery, and keep it away from children. If you think batteries might have been swallowed or placed inside any part of the body, seek immediate medical attention.

The batteries must be disposed of properly, including keeping them away from children. Even used cells may cause injury.

CLEANING AND MAINTENANCE

5



Outer Surface

Gently wipe off the dust with a soft, dry cloth.



CAUTION

1. Always unplug the fan before any cleaning or maintenance to avoid the risk of fire, electric shock, or injury to persons.
2. Do not immerse in water or get water inside the motor housing.
3. Do not use any chemical agents when cleaning the fan.
4. Store in a cool, dry place and cover it to protect from dust.

Front Grille and Blades



WARNING

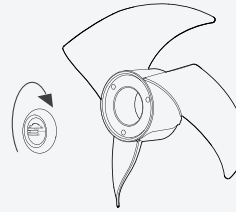
To reduce the risk of electrical shock and injury to persons, turn off and unplug the appliance before any cleaning and maintenance.

1



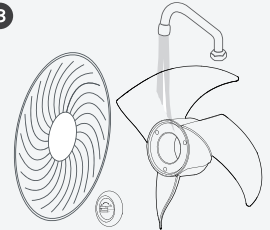
Remove the screw on the front grille, rotate the grille counterclockwise to take it off.

2



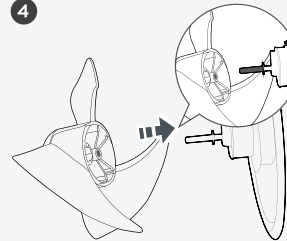
Remove the blade cap by rotating it as shown and take the blade assembly out of the shaft.

3



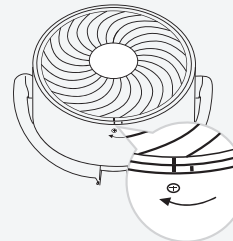
Rinse cap, blades, and grille under running water or with a clean, damp cloth.

4



Dry up all parts, and insert the blade assembly back into the shaft by aligning the D-shaped points on the center.

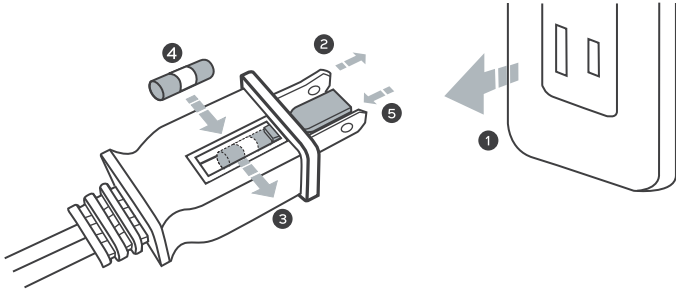
5



Align the point on the front grille with the right point on the casing as shown, then rotate the grille clockwise and install the screw back in place.

User Servicing Instructions (Fuse)

This appliance features a fused safety plug that protects against overload or short-circuit situations. If the fuse blows, please cut off power and follow the below instructions or consult a qualified electrician.



- 1 Grasp plug and remove from the receptacle or other outlet device. Do not unplug by pulling on cord.
- 2 Open fuse cover. Slide open fuse access cover on top of attachment plug towards blades.
- 3 Remove fuse carefully. Push the fuse from the other side to remove the fuse.
- 4 Risk of fire. Replace fuse only with 5 Amp, 125 Volt fuse.
- 5 Close fuse cover. Slide closed the fuse access cover on top of attachment plug.



WARNING

Risk of fire. Do not replace attachment plug. Contains a safety device(fuse) that should not be removed. Discard product if the attachment plug is damaged.

TROUBLESHOOTING



My air circulator won't turn on!

Make sure that the cord is connected to a powered outlet and the mains voltage corresponds with the voltage indicated on the air circulator.

My air circulator is shaky and wobbling!

Place the air circulator on a flat, level surface.

My air circulator is making vibration and noise!

1. Place the air circulator on a flat, level surface.
2. Be sure not to insert anything into the air inlet and outlet.
3. It is normal that the fan makes a little noise when manually adjusting the fan head.

If your problem is not listed or still persists, please contact our Customer Support (see page 18)

DREO CUSTOMER CARE



Default 12-Month Warranty

This appliance is covered by Dreo warranty for 12 months from the date of its original purchase.

The warranty will not apply in cases of:

1. Accident, misuse, or repairs performed by unauthorized personnel.
2. Any unit that has been tampered with or used for commercial purposes.
3. Normal wear and tear of wearable parts.
4. Use of force, damage caused by external influences.
5. Damage caused by non-observance of the User Manual, e.g. connection to an unsuitable mains supply or noncompliance with the instructions.
6. Partially or completely dismantled appliances.
7. Defects caused by or resulting from damages from shipping or from repairs, service, or alteration to the product or any of its parts that have been performed by a repair person not authorized by Dreo.

We can only provide after-sales service for products that are sold by Dreo or Dreo authorized retailers and distributors. If you have purchased the appliance from a different place, please contact your seller for return and warranty issues.

FCC STATEMENT

FCC Statement

This device complies with Part 15 of the FCC Rules. Operation is subject to the following two conditions: (1) this device may not cause harmful interference, and (2) this device must accept any interference received, including interference that may cause undesired operation.

Please note that changes or modifications of this product is not expressly approved by the party responsible for compliance could void the user's authority to operate the equipment.

NOTE: This equipment has been tested and found to comply with the limits for a Class B digital device, pursuant to Part 15 of the FCC Rules. These limits are designed to provide reasonable protection against harmful interference in a residential installation. This equipment generates, uses and can radiate radio frequency energy and, if not installed and used in accordance with the instructions, may cause harmful interference to radio communications. However, there is no guarantee that interference will not occur in a particular installation.

If this equipment does cause harmful interference to radio or television reception, which can be determined by turning the equipment off and on, the user is encouraged to try to correct the interference by one or more of the following measures:

- Reorient or relocate the receiving antenna.
- Increase the separation between the equipment and receiver.
- Connect the equipment into an outlet on a circuit different from that to which the receiver is connected.
- Consult the dealer or an experienced radio/TV technician for help.

This equipment complies with FCC radiation exposure limits set forth for an uncontrolled environment. This equipment should be installed and operated with a minimum distance of 20cm between the radiator & your body. This transmitter must not be co-located or operating in conjunction with any other antenna or transmitter.

Model No.: DTAF01S
Rev_1.0_EN

We're Here to Help!



(888) 290-1688

Mon - Fri, 9:00 am-5:00 pm PST/PDT



support@dreo.com



www.dreo.com



**Shenzhen Hesung Innovation
Technology Co., LTD**



26F, Bldg A7, Creative City, Shenzhen, China



MADE IN CHINA



**Intertek
5018396**