

FCC TEST REPORT

Client Name : Dong guan Good Luck Furniture Industrial Co.,Ltd
Address : 101# Room No. 65 Qingxi Street Qingxi Town DongGuan
City. GuangDong Province
Product Name : Electronic adjustable standing desk
Date : Nov. 17, 2021



Shenzhen Anbotek Compliance Laboratory Limited

Contents

1. General Information.....	4
1.1. Client Information.....	4
1.2. Description of Device (EUT).....	4
1.3. Auxiliary Equipment Used During Test.....	5
1.4. Description of Test Modes.....	5
1.5. Description Of Test Setup.....	6
1.6. Test Equipment List.....	7
1.7. Measurement Uncertainty.....	8
1.8. Description of Test Facility.....	8
2. Summary of Test Results.....	9
3. Conducted Emission Test.....	10
3.1. Test Standard and Limit.....	10
3.2. Test Setup.....	10
3.3. Test Procedure.....	10
3.4. Test Data.....	10
4. Radiation Spurious Emission.....	15
4.1. Test Standard and Limit.....	15
4.2. Test Setup.....	15
4.3. Test Procedure.....	16
4.4. Test Data.....	16
5. Antenna Requirement.....	21
5.1. Test Standard and Requirement.....	21
5.2. Antenna Connected Construction.....	21
APPENDIX I -- TEST SETUP PHOTOGRAPH.....	22
APPENDIX II -- EXTERNAL PHOTOGRAPH.....	24
APPENDIX III -- INTERNAL PHOTOGRAPH.....	31

TEST REPORT

Applicant : Dong guan Good Luck Furniture Industrial Co.,Ltd
Manufacturer : Dong guan Good Luck Furniture Industrial Co.,Ltd
Product Name : Electronic adjustable standing desk
Model No. : K310, K302, K303, K307, K313, K314
Trade Mark : KOWO
Rating(s) : Input: DC 24V, 2.1A
Wireless output:10W

Test Standard(s) : FCC Part15 Subpart C, Paragraph 15.209
Test Method(s) : ANSI C63.10: 2020

The device described above is tested by Shenzhen Anbotek Compliance Laboratory Limited to determine the maximum emission levels emanating from the device and the severe levels of the device can endure and its performance criterion. The measurement results are contained in this test report and Shenzhen Anbotek Compliance Laboratory Limited is assumed full of responsibility for the accuracy and completeness of these measurements. Also, this report shows that the EUT (Equipment Under Test) is technically compliant with the FCC Part 15 Subpart C requirements.

This report applies to above tested sample only and shall not be reproduced in part without written approval of Shenzhen Anbotek Compliance Laboratory Limited.

Date of Receipt

Oct. 18, 2021

Date of Test

Oct. 18~Nov. 10, 2021

Prepared By



(Ella Liang)

Approved & Authorized Signer



(Kingkong Jin)

1. General Information

1.1. Client Information

Applicant	:	Dong guan Good Luck Furniture Industrial Co.,Ltd
Address	:	101# Room No. 65 Qingxi Street Qingxi Town DongGuan Clty. GuangDong Province
Manufacturer	:	Dong guan Good Luck Furniture Industrial Co.,Ltd
Address	:	101# Room No. 65 Qingxi Street Qingxi Town DongGuan Clty. GuangDong Province
Factory	:	Dong guan Good Luck Furniture Industrial Co.,Ltd
Address	:	101# Room No. 65 Qingxi Street Qingxi Town DongGuan Clty. GuangDong Province

1.2. Description of Device (EUT)

Product Name	:	Electronic adjustable standing desk	
Model No.	:	K310, K302, K303, K307, K313, K314 (Note: All samples are the same except the model number and appearance colors, so we prepare "K310" for test only.)	
Trade Mark	:	KOWO	
Test Power Supply	:	AC 120V, 60Hz for Adapter/ AC 240V, 60Hz for Adapter	
Test Sample No.	:	1-2-1(Normal Sample), 1-2-2(Engineering Sample)	
Product Description	:	Operation Frequency:	110.1-205KHz
	:	Modulation Type:	FSK
	:	Antenna Type:	Inductive loop coil Antenna
	:	Antenna Gain(Peak):	0 dBi
	:	Adapter:	M/N: GRP-60W240021-A Input: AC 100-240V, 50/60Hz, 1.5A Output: 24V---2.1A, 50.4W
Remark: 1) For a more detailed features description, please refer to the manufacturer's specifications or the User's Manual.			

1.3. Auxiliary Equipment Used During Test

Wireless charging load	:	Manufacturer: Shenzhen Ouju Technology Co., Ltd. M/N: CD2531 Power: 5W/7.5W/10W/15W Last Cal.: Oct. 26, 2020 Cal. Interval: 1 Year
------------------------	---	--

1.4. Description of Test Modes

To investigate the maximum EMI emission characteristics generates from EUT, the test system was pre-scanning tested base on the consideration of following EUT operation mode or test configuration mode which possible have effect on EMI emission level. Each of these EUT operation mode(s) or test configuration mode(s) mentioned above was evaluated respectively.

Pretest Mode	Description
Mode 1	Wireless Charging Mode+USB Mode

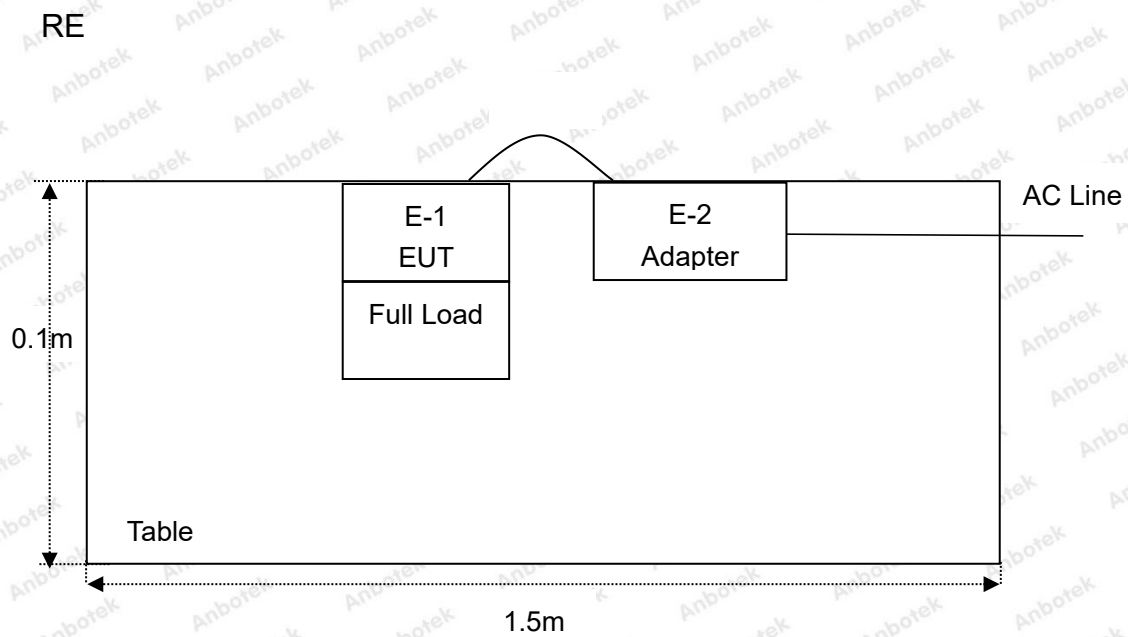
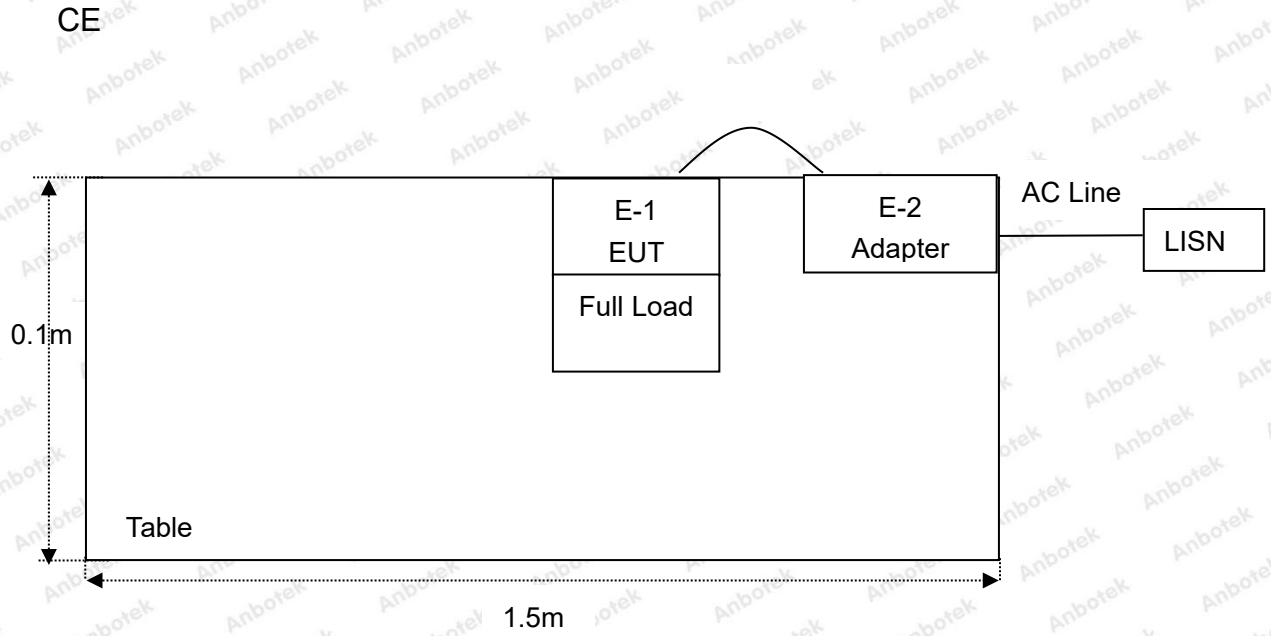
For Conducted Emission	
Final Test Mode	Description
Mode 1	Wireless Charging Mode+USB Mode

For Radiated Emission	
Final Test Mode	Description
Mode 1	Wireless Charging Mode+USB Mode

Note: (1)Test channel is 0.1331MHz.

(2) All the situation(full load, half load and empty load) has been tested,only the worst situation (full load 10W) was recorded in the report.

1.5. Description Of Test Setup



1.6. Test Equipment List

Item	Equipment	Manufacturer	Model No.	Serial No.	Last Cal.	Cal. Interval
1.	Three Phase V-type Artificial Power Network	CYBERTEK	EM5040DT	E215040DT001	Jul 05, 2021	1 Year
2.	EMI Test Receiver	Rohde & Schwarz	ESCI	100627	Oct. 22, 2021	1 Year
3.	EMI Test Receiver	Rohde & Schwarz	ESR26	101481	Oct. 22, 2021	1 Year
4.	RF Switching Unit	Compliance Direction	RSU-M2	38303	Oct. 22, 2021	1 Year
5.	MAX Spectrum Analysis	Agilent	N9020A	MY51170037	Oct. 22, 2021	1 Year
6.	Preamplifier	SKET Electronic	BK1G18G30 D	KD17503	Oct. 22, 2021	1 Year
7.	Double Ridged Horn Antenna	Instruments corporation	GTH-0118	351600	Oct. 22, 2021	2 Year
8.	Bilog Broadband Antenna	Schwarzbeck	VULB9163	VULB 9163-289	Oct. 22, 2021	2 Year
9.	Loop Antenna	Schwarzbeck	FMZB1519B	00053	Oct. 22, 2021	2 Year
10.	Horn Antenna	A-INFO	LB-180400-K F	J211060628	Oct. 22, 2021	2 Year
11.	Pre-amplifier	SONOMA	310N	186860	Oct. 22, 2021	1 Year
12.	EMI Test Software EZ-EMC	SHURPLE	N/A	N/A	N/A	N/A
13.	RF Test Control System	YIHENG	YH3000	2017430	Oct. 22, 2021	1 Year
14.	Power Sensor	DAER	RPR3006W	15I00041SN045	Oct. 22, 2021	1 Year
15.	Power Sensor	DAER	RPR3006W	15I00041SN046	Oct. 22, 2021	1 Year
16.	MXA Spectrum Analysis	KEYSIGHT	N9020A	MY53280032	Oct. 22, 2021	1 Year
17.	MXG RF Vector Signal Generator	Agilent	N5182A	MY48180656	Oct. 22, 2021	1 Year
18.	Signal Generator	Agilent	E4421B	MY41000743	Oct. 22, 2021	1 Year
19.	DC Power Supply	IVYTECH	IV3605	1804D360510	Oct. 22, 2021	1 Year
20.	Constant Temperature Humidity Chamber	ZHONGJIAN	ZJ-KHWS80 B	N/A	Oct. 22, 2021	1 Year

1.7. Measurement Uncertainty

Radiation Uncertainty	:	Ur = 3.9 dB (Horizontal)
		Ur = 3.8 dB (Vertical)
Conduction Uncertainty	:	Uc = 3.4 dB

1.8. Description of Test Facility

The test facility is recognized, certified, or accredited by the following organizations:

FCC-Registration No.: 184111

Shenzhen Anbotek Compliance Laboratory Limited, EMC Laboratory has been registered and fully described in a report filed with the (FCC) Federal Communications Commission. The acceptance letter from the FCC is maintained in our files. Registration No. 184111.

ISED-Registration No.: 8058A

Shenzhen Anbotek Compliance Laboratory Limited, EMC Laboratory has been registered and fully described in a report filed with the (ISED) Innovation, Science and Economic Development Canada. The acceptance letter from the ISED is maintained in our files. Registration 8058A.

Test Location

Shenzhen Anbotek Compliance Laboratory Limited.

1/F, Building D, Sogood Science and Technology Park, Sanwei community, Hangcheng Street, Bao'an District, Shenzhen, Guangdong, China.518102

2. Summary of Test Results

Standard Section	Test Item	Result
FCC Part 15, Paragraph 15.207	Conducted Emission Test	PASS
FCC Part 15, Paragraph 15.209(a)(f)	Spurious Emission	PASS
Part 15.203	Antenna Requirement	PASS

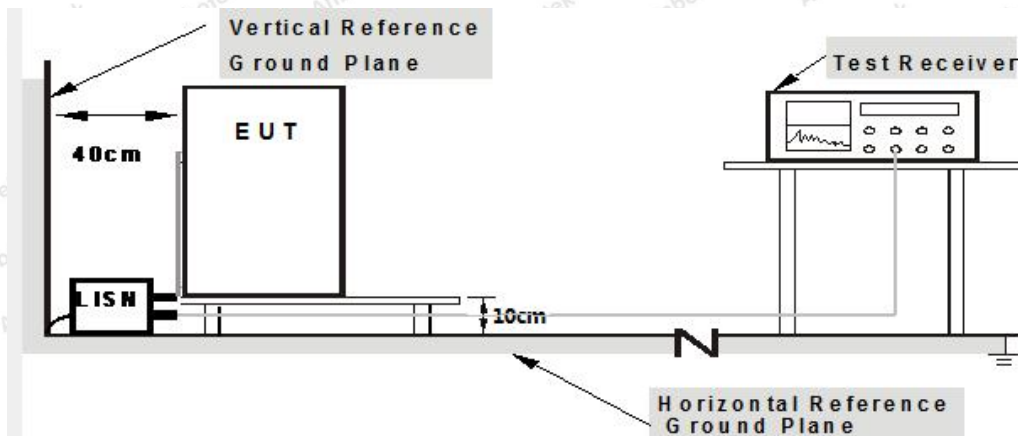
3. Conducted Emission Test

3.1. Test Standard and Limit

Test Standard	FCC Part15 Section 15.207		
Test Limit	Frequency	Maximum RF Line Voltage (dBuV)	
		Quasi-peak Level	Average Level
	150kHz~500kHz	66 ~ 56 *	56 ~ 46 *
	500kHz~5MHz	56	46
	5MHz~30MHz	60	50

Remark: (1) *Decreasing linearly with logarithm of the frequency.
 (2) The lower limit shall apply at the transition frequency.

3.2. Test Setup



Note: 1. Support units were connected to second LISN.
2. Both of LISNs (AMN) are 80 cm from EUT and at least 80 from other units and other metal planes

3.3. Test Procedure

The EUT system is connected to the power mains through a line impedance stabilization network (L.I.S.N.). This provides a 50ohm coupling impedance for the EUT system. Please refer the block diagram of the test setup and photographs. Both sides of AC line are checked to find out the maximum conducted emission. In order to find the maximum emission levels, the relative positions of equipment and all of the interface cables shall be changed according to FCC ANSI C63.10-2020 on Conducted Emission Measurement.

The bandwidth of test receiver (ESCI) set at 9kHz.

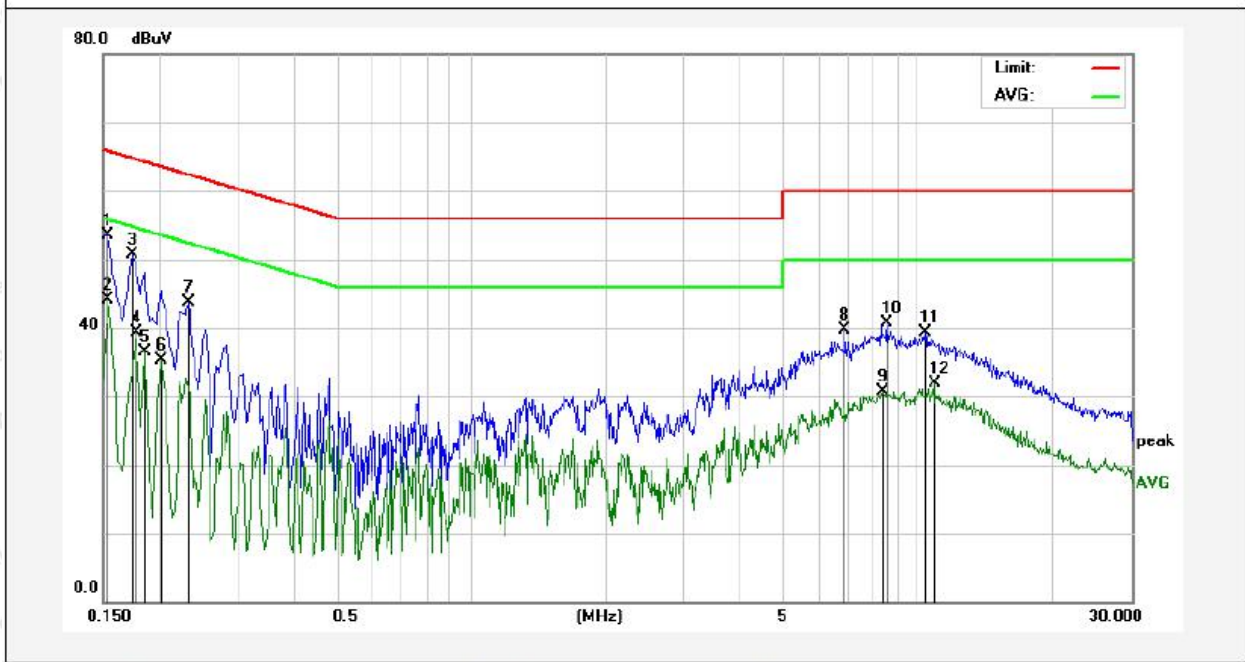
The frequency range from 150kHz to 30MHz is checked.

3.4. Test Data

Please to see the following pages

Conducted Emission Test Data

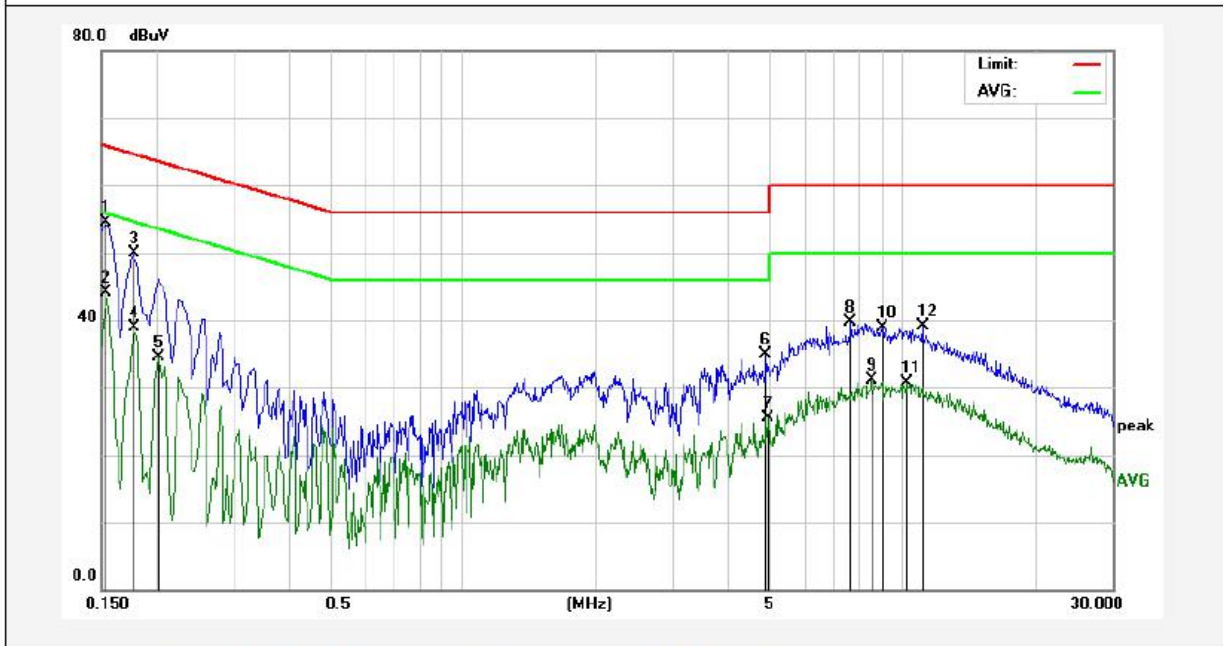
Test Site: 1# Shielded Room
 Operating Condition: Mode 1
 Test Specification: AC 240V, 60Hz for adapter
 Comment: Live Line
 Tem.: 24.1°C Hum.: 48%



No.	Freq. (MHz)	Reading (dBuV)	Factor (dB)	Result (dBuV)	Limit (dBuV)	Over Limit (dB)	Detector	Remark
1	0.1539	53.47	0.12	53.59	65.78	-12.19	QP	
2	0.1539	43.92	0.12	44.04	55.78	-11.74	AVG	
3	0.1740	50.62	0.12	50.74	64.76	-14.02	QP	
4	0.1780	39.14	0.12	39.26	54.57	-15.31	AVG	
5	0.1860	36.41	0.12	36.53	54.21	-17.68	AVG	
6	0.2020	35.22	0.12	35.34	53.52	-18.18	AVG	
7	0.2340	43.53	0.12	43.65	62.30	-18.65	QP	
8	6.8699	39.61	0.11	39.72	60.00	-20.28	QP	
9	8.3339	30.58	0.12	30.70	50.00	-19.30	AVG	
10	8.5139	40.67	0.12	40.79	60.00	-19.21	QP	
11	10.3659	39.12	0.12	39.24	60.00	-20.76	QP	
12	10.8739	31.69	0.13	31.82	50.00	-18.18	AVG	

Conducted Emission Test Data

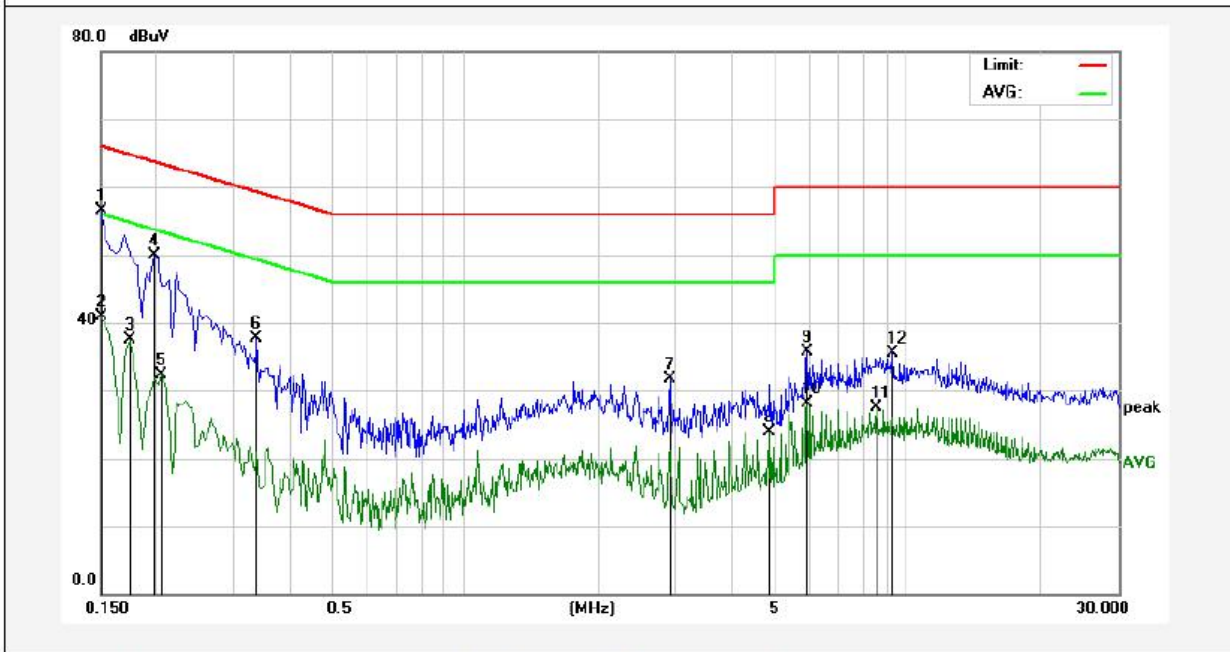
Test Site: 1# Shielded Room
 Operating Condition: Mode 1
 Test Specification: AC 240V, 60Hz for adapter
 Comment: Neutral Line
 Tem.: 24.1°C Hum.: 48%



No.	Freq. (MHz)	Reading (dBuV)	Factor (dB)	Result (dBuV)	Limit (dBuV)	Over Limit (dB)	Detector	Remark
1	0.1539	54.36	0.12	54.48	65.78	-11.30	QP	
2	0.1539	44.03	0.12	44.15	55.78	-11.63	AVG	
3	0.1780	49.87	0.12	49.99	64.57	-14.58	QP	
4	0.1780	38.80	0.12	38.92	54.57	-15.65	AVG	
5	0.2020	34.43	0.12	34.55	53.52	-18.97	AVG	
6	4.8820	34.76	0.11	34.87	56.00	-21.13	QP	
7	4.9420	25.42	0.11	25.53	46.00	-20.47	AVG	
8	7.6220	39.64	0.12	39.76	60.00	-20.24	QP	
9	8.4700	30.90	0.12	31.02	50.00	-18.98	AVG	
10	8.9900	38.80	0.12	38.92	60.00	-21.08	QP	
11	10.2340	30.58	0.12	30.70	50.00	-19.30	AVG	
12	11.1380	39.00	0.13	39.13	60.00	-20.87	QP	

Conducted Emission Test Data

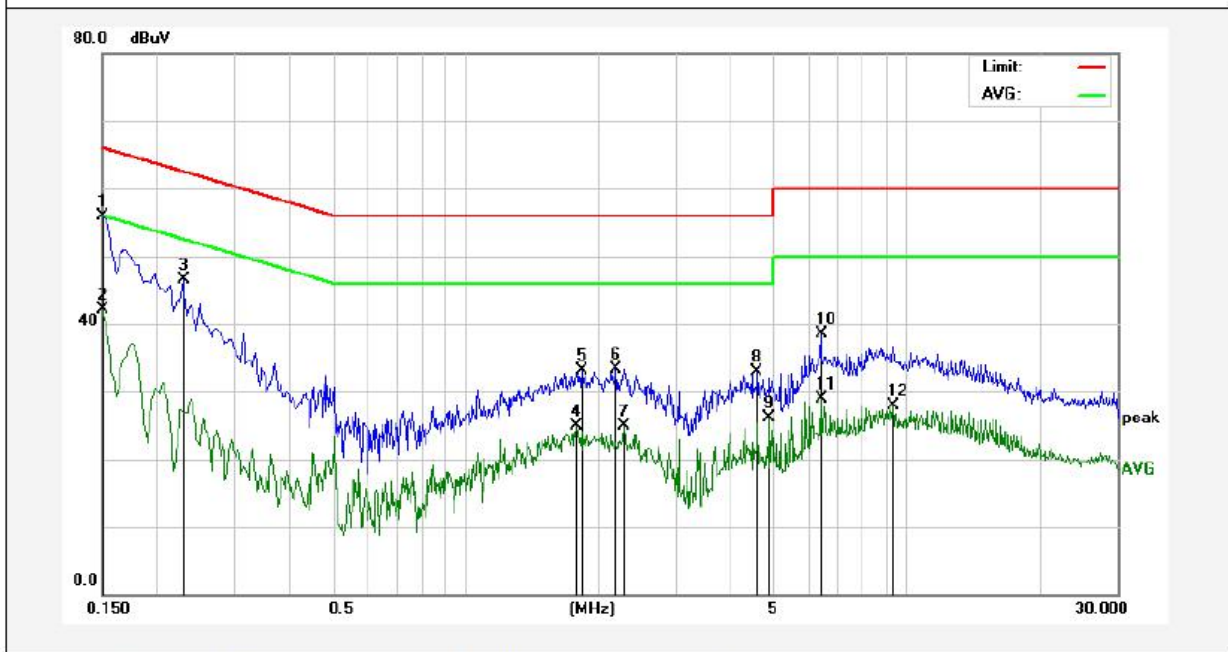
Test Site: 1# Shielded Room
 Operating Condition: Mode 1
 Test Specification: AC 120V, 60Hz for adapter
 Comment: Live Line
 Tem.: 24.1°C Hum.: 48%



No.	Freq. (MHz)	Reading (dBuV)	Factor (dB)	Result (dBuV)	Limit (dBuV)	Over Limit (dB)	Detector	Remark
1	0.1500	56.43	0.11	56.54	65.99	-9.45	QP	
2	0.1500	40.71	0.11	40.82	55.99	-15.17	AVG	
3	0.1740	37.43	0.12	37.55	54.76	-17.21	AVG	
4	0.1980	49.85	0.12	49.97	63.69	-13.72	QP	
5	0.2060	32.11	0.12	32.23	53.36	-21.13	AVG	
6	0.3379	37.67	0.12	37.79	59.25	-21.46	QP	
7	2.9020	31.54	0.12	31.66	56.00	-24.34	QP	
8	4.8780	23.87	0.11	23.98	46.00	-22.02	AVG	
9	5.9300	35.66	0.11	35.77	60.00	-24.23	QP	
10	5.9300	28.05	0.11	28.16	50.00	-21.84	AVG	
11	8.5380	27.33	0.12	27.45	50.00	-22.55	AVG	
12	9.3020	35.40	0.12	35.52	60.00	-24.48	QP	

Conducted Emission Test Data

Test Site: 1# Shielded Room
 Operating Condition: Mode 1
 Test Specification: AC 120V, 60Hz for adapter
 Comment: Neutral Line
 Tem.: 24.1°C Hum.: 48%



No.	Freq. (MHz)	Reading (dBuV)	Factor (dB)	Result (dBuV)	Limit (dBuV)	Over Limit (dB)	Detector	Remark
1	0.1500	55.78	0.11	55.89	65.99	-10.10	QP	
2	0.1500	41.90	0.11	42.01	55.99	-13.98	AVG	
3	0.2300	46.31	0.12	46.43	62.45	-16.02	QP	
4	1.7860	24.84	0.13	24.97	46.00	-21.03	AVG	
5	1.8300	33.05	0.13	33.18	56.00	-22.82	QP	
6	2.1940	33.26	0.12	33.38	56.00	-22.62	QP	
7	2.2940	24.82	0.12	24.94	46.00	-21.06	AVG	
8	4.5739	32.80	0.11	32.91	56.00	-23.09	QP	
9	4.8820	25.92	0.11	26.03	46.00	-19.97	AVG	
10	6.4060	38.33	0.11	38.44	60.00	-21.56	QP	
11	6.4060	28.78	0.11	28.89	50.00	-21.11	AVG	
12	9.3060	27.88	0.12	28.00	50.00	-22.00	AVG	

4. Radiation Spurious Emission

4.1. Test Standard and Limit

Test Standard	FCC Part15 C Section 15.209 and 15.205				
Test Limit	Frequency (MHz)	Field strength (microvolt/meter)	Limit (dBuV/m)	Remark	Measurement distance (m)
	0.009MHz~0.490MHz	2400/F(kHz)	-	-	300
	0.490MHz-1.705MHz	24000/F(kHz)	-	-	30
	1.705MHz-30MHz	30	-	-	30
	30MHz~88MHz	100	40.0	Quasi-peak	3
	88MHz~216MHz	150	43.5	Quasi-peak	3
	216MHz~960MHz	200	46.0	Quasi-peak	3
	960MHz~1000MHz	500	54.0	Quasi-peak	3
	Above 1000MHz	500	54.0	Average	3
-		74.0	Peak	3	

Remark:

(1)The lower limit shall apply at the transition frequency.

(2) 15.35(b), Unless otherwise specified, the limit on peak radio frequency emissions is 20dB above the maximum permitted average emission limit applicable to the equipment under test. This peak limit applies to the total peak emission level radiated by the device.

4.2. Test Setup

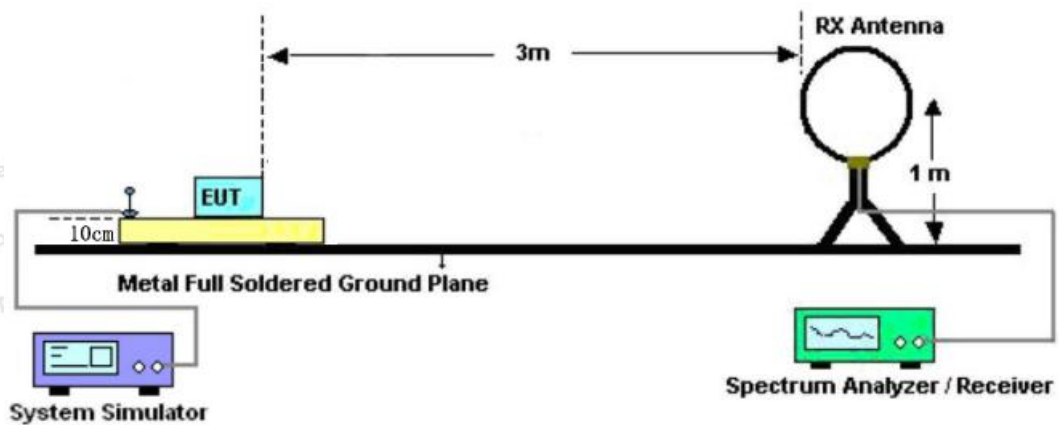


Figure 1. Below 30MHz

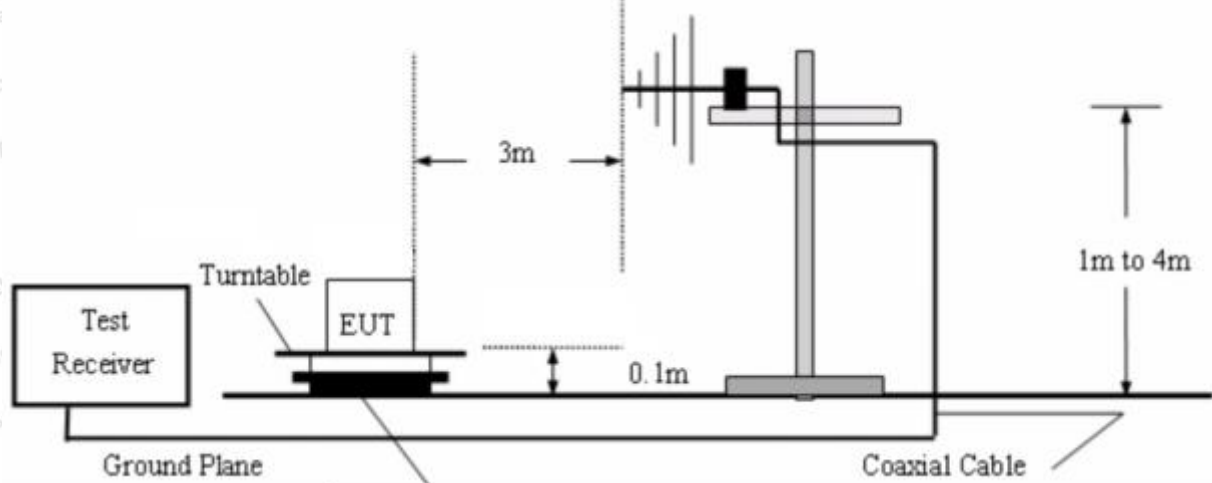


Figure 2. 30MHz to 1GHz

4.3. Test Procedure

For above 1GHz: The EUT is placed on a turntable, which is 0.1m above the ground plane. The turn table can rotate 360 degrees to determine the position of the maximum emission level. The EUT is set 3 meters away from the receiving antenna which is mounted on a antenna tower. The antenna can be moved up and down from 1 to 4 meters to find out the maximum emission level. Rotated the EUT through three orthogonal axes to determine the maximum emissions, both horizontal and vertical polarization of the antenna are set on test. The EUT is tested in 9*6*6 Chamber. The device is evaluated in xyz orientation.

For 9kHz to 150kHz, Set the spectrum analyzer as:

RBW = 200Hz, VBW = 1kHz, Detector= Quasi-Peak, Trace mode= Max hold, Sweep- auto couple.

For 150kHz to 30MHz, Set the spectrum analyzer as:

RBW = 9KHz, VBW = 30kHz, Detector= Quasi-Peak, Trace mode= Max hold, Sweep- auto couple.

For 30MHz to 1000MHz, Set the spectrum analyzer as:

RBW = 100kHz, VBW = 300kHz, Detector= Quasi-Peak, Trace mode= Max hold, Sweep- auto couple.

4.4. Test Data

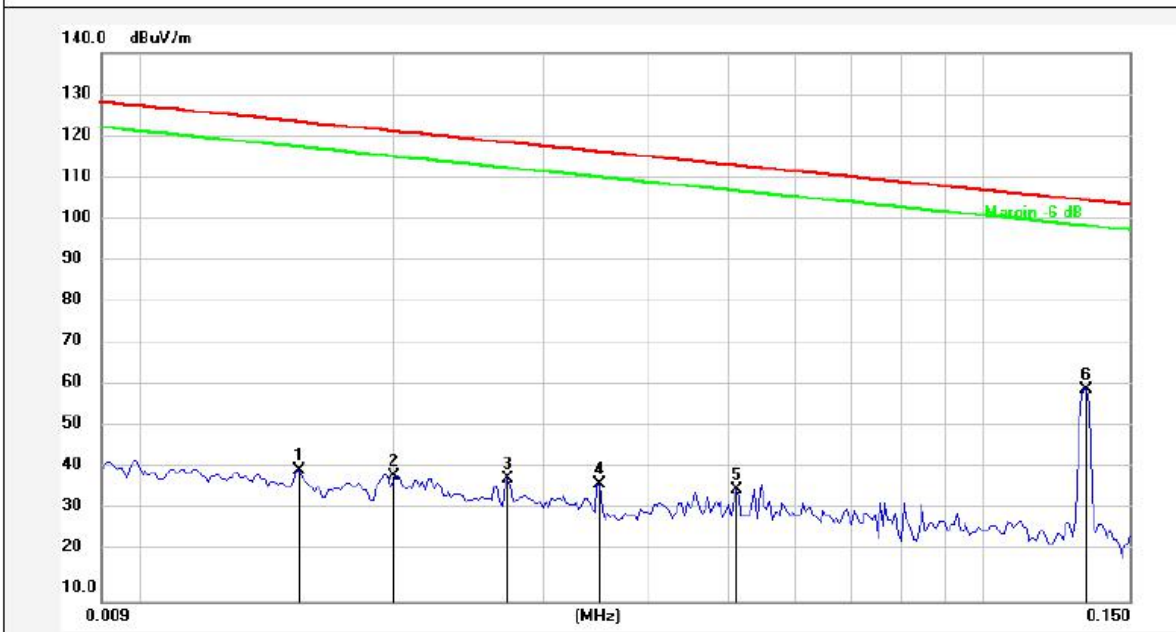
PASS

Note: The data is in TX mode, and this is the worst mode.

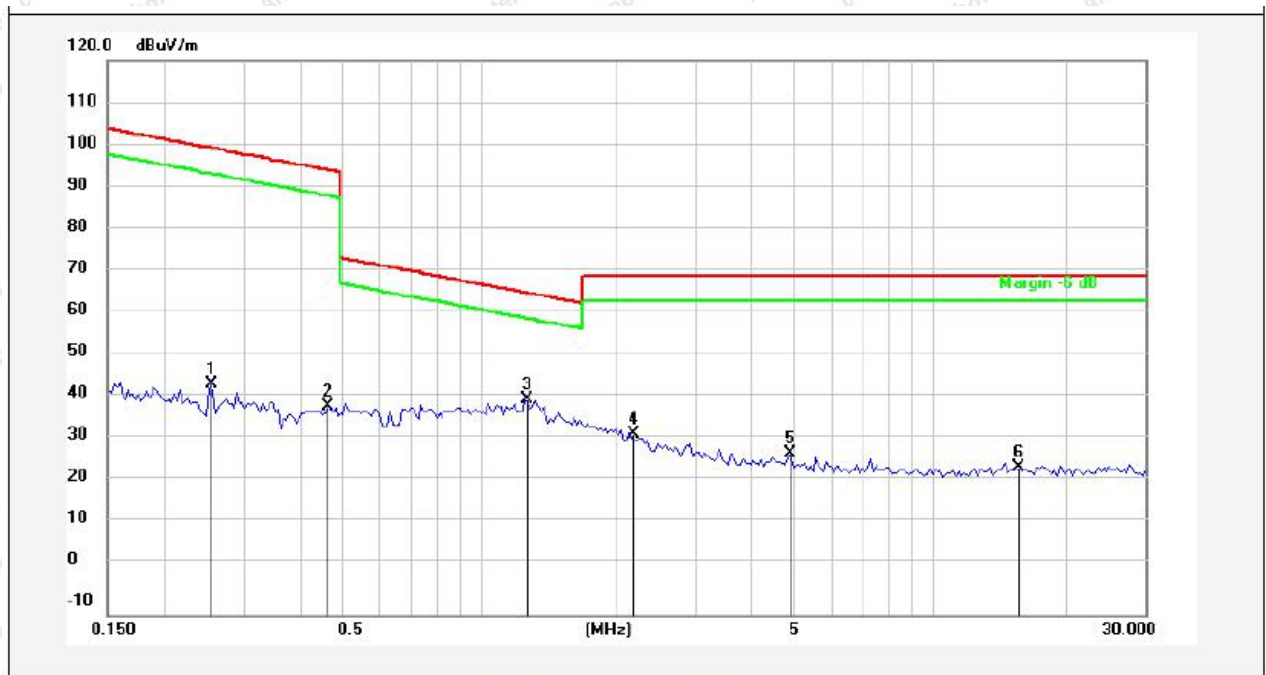
Test Results

(Between 9KHz – 30MHz)

Standard: FCC PART15 C _3m **Power Source:** AC 120V, 60Hz for adapter
Test item: Radiation Test **Temp.(C)/Hum.(%RH):** 22.4°C/49%RH
Test Mode: Mode 1 **Distance:** 3m



No.	Freq. (MHz)	Reading (dBuV)	Factor ()	Result (dBuV/m)	Limit (dBuV/m)	Over Limit (dB)	Detector	Height (cm)	degree (deg)	Remark
1	0.0154	20.74	20.29	41.03	123.67	-82.64	AV			
2	0.0200	19.32	20.29	39.61	121.41	-81.80	AV			
3	0.0273	18.78	20.38	39.16	118.73	-79.57	AV			
4	0.0352	17.22	20.48	37.70	116.53	-78.83	AV			
5	0.0509	15.95	20.41	36.36	113.35	-76.99	AV			
6	0.1331	40.03	20.34	60.37	105.05	-44.68	AV			

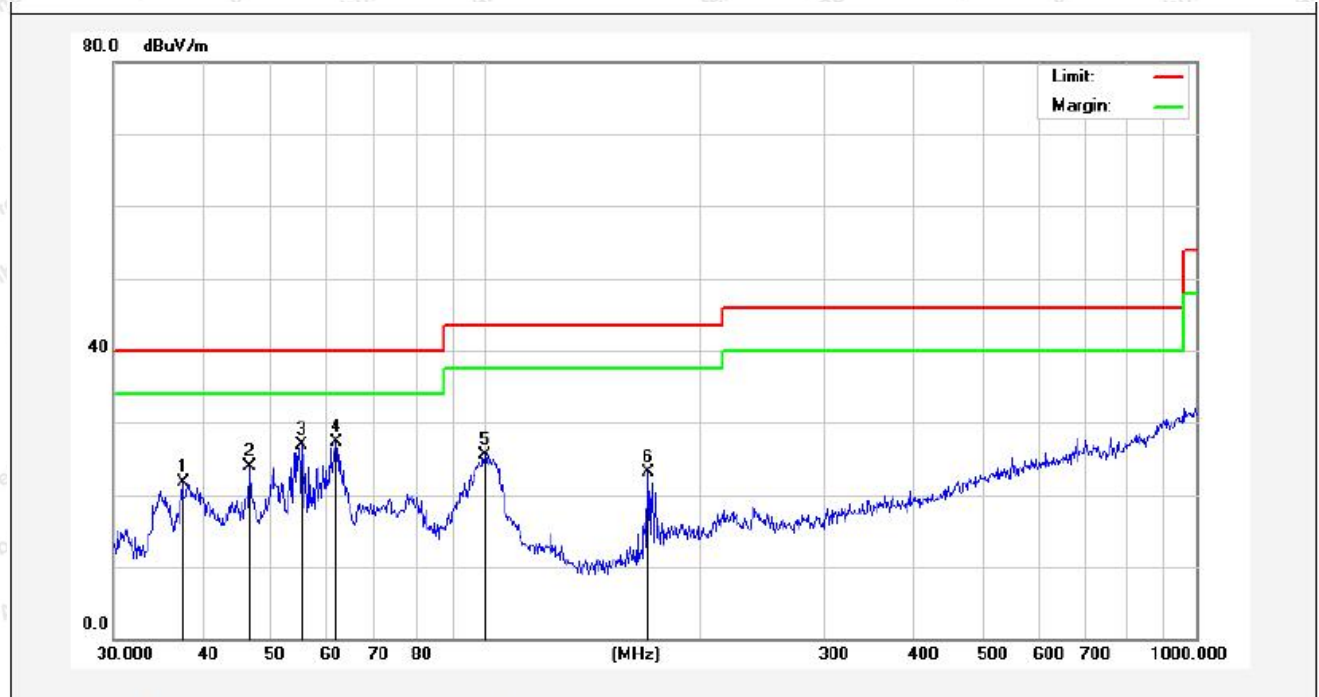


No.	Freq. (MHz)	Reading (dBuV)	Factor ()	Result (dBuV/m)	Limit (dBuV/m)	Over Limit (dB)	Detector	Height (cm)	degree (deg)	Remark
1	0.2548	23.78	20.30	44.08	99.44	-55.36	AV			
2	0.4621	18.51	20.27	38.78	94.31	-55.53	AV			
3	1.2655	20.23	20.26	40.49	65.58	-25.09	QP			
4	2.1783	12.26	20.28	32.54	69.50	-36.96	QP			
5	4.8867	7.59	20.42	28.01	69.50	-41.49	QP			
6	15.4701	3.99	20.55	24.54	69.50	-44.96	QP			

Remark: According to FCC PART 15.209 (d), the emission limits for the frequency bands 9–90 kHz, 110–490 kHz and above 1000 MHz, Radiated emission limits in these three bands are based on measurements employing an average detector.

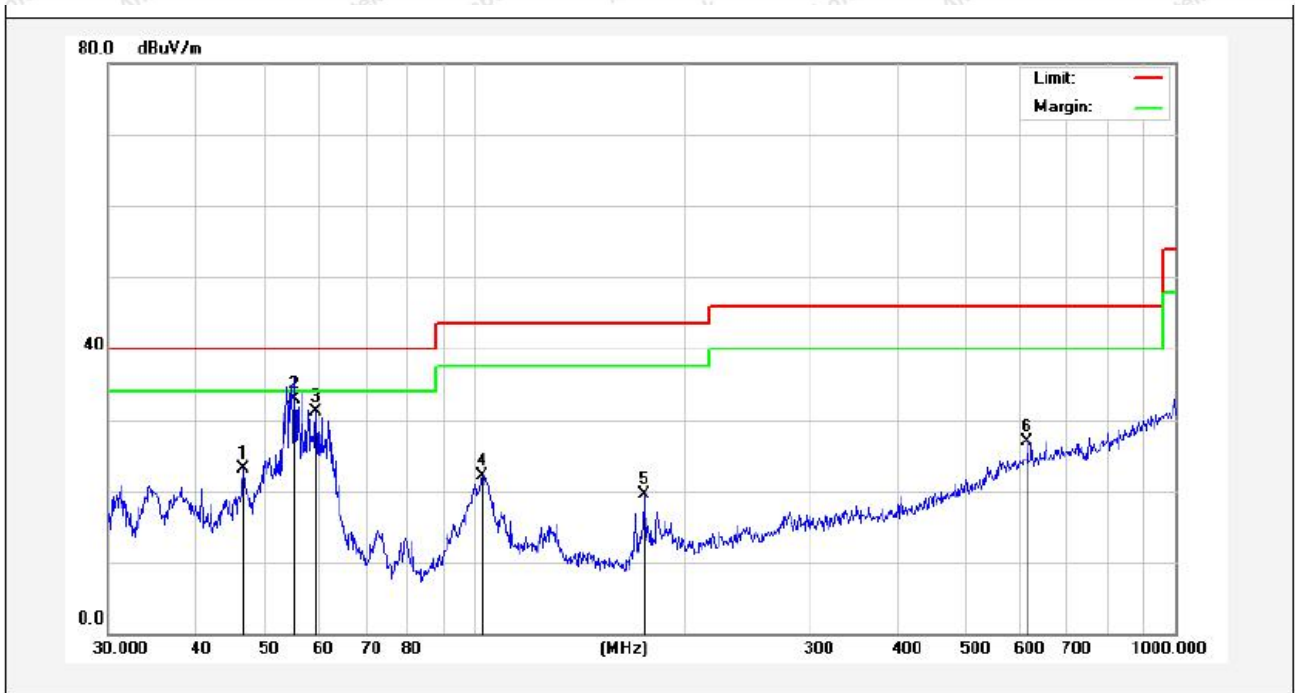
(Between 30MHz –1000 MHz)

Standard:	FCC PART15 C _3m	Polarization:	Horizontal
Test item:	Radiation Test	Power Source:	AC 120V, 60Hz for adapter
Test Mode:	Mode 1	Temp.(C)/Hum.(%RH):	24.3°C/46%RH
Distance:	3m		



No.	Freq. (MHz)	Reading (dBuV)	Factor (dB/m)	Result (dBuV/m)	Limit (dBuV/m)	Over Limit (dB)	Detector	Height (cm)	degree (deg)	Remark
1	37.5479	38.05	-16.29	21.76	40.00	-18.24	QP	100	0	
2	46.6664	38.44	-14.45	23.99	40.00	-16.01	QP	100	360	
3	55.2207	43.41	-16.51	26.90	40.00	-13.10	QP	100	0	
4	61.7781	44.05	-16.83	27.22	40.00	-12.78	QP	100	360	
5	99.8777	44.87	-19.39	25.48	43.50	-18.02	QP	100	0	
6	169.5990	44.50	-21.34	23.16	43.50	-20.34	QP	100	360	

Standard:	FCC PART15 C _3m	Polarization:	Vertical
Test item:	Radiation Test	Power Source:	AC 120V, 60Hz for adapter
Test Mode:	Mode 1	Temp.(C)/Hum.(%RH):	24.3°C/46%RH
Distance:	3m		



No.	Freq. (MHz)	Reading (dBuV)	Factor (dB/m)	Result (dBuV/m)	Limit (dBuV/m)	Over Limit (dB)	Detector	Height (cm)	degree (deg)	Remark
1	46.6664	37.48	-14.35	23.13	40.00	-16.87	QP	100	360	
2	55.2207	49.46	-16.51	32.95	40.00	-7.05	QP	100	0	
3	59.2325	47.28	-16.26	31.02	40.00	-8.98	QP	100	360	
4	102.3597	37.09	-15.04	22.05	43.50	-21.45	QP	100	0	
5	174.4241	38.00	-18.57	19.43	43.50	-24.07	QP	100	360	
6	614.2142	33.58	-6.76	26.82	46.00	-19.18	QP	100	0	

5. Antenna Requirement

5.1. Test Standard and Requirement

Test Standard	FCC Part15 Section 15.203
Requirement	An intentional radiator shall be designed to ensure that no antenna other than that furnished by the responsible party shall be used with the device. The use of a permanently attached antenna or of an antenna that uses a unique coupling to the intentional radiator, the manufacturer may design the unit so that a broken antenna can be replaced by the user, but the use of a standard antenna jack or electrical connector is prohibited.

5.2. Antenna Connected Construction

The antenna is a Inductive loop coil Antenna which permanently attached, and the best case gain of the antenna is 0 dBi. It complies with the standard requirement.

APPENDIX I -- TEST SETUP PHOTOGRAPH

Photo of Conducted Emission Measurement



Photo of Radiation Emission Test





APPENDIX II -- EXTERNAL PHOTOGRAPH







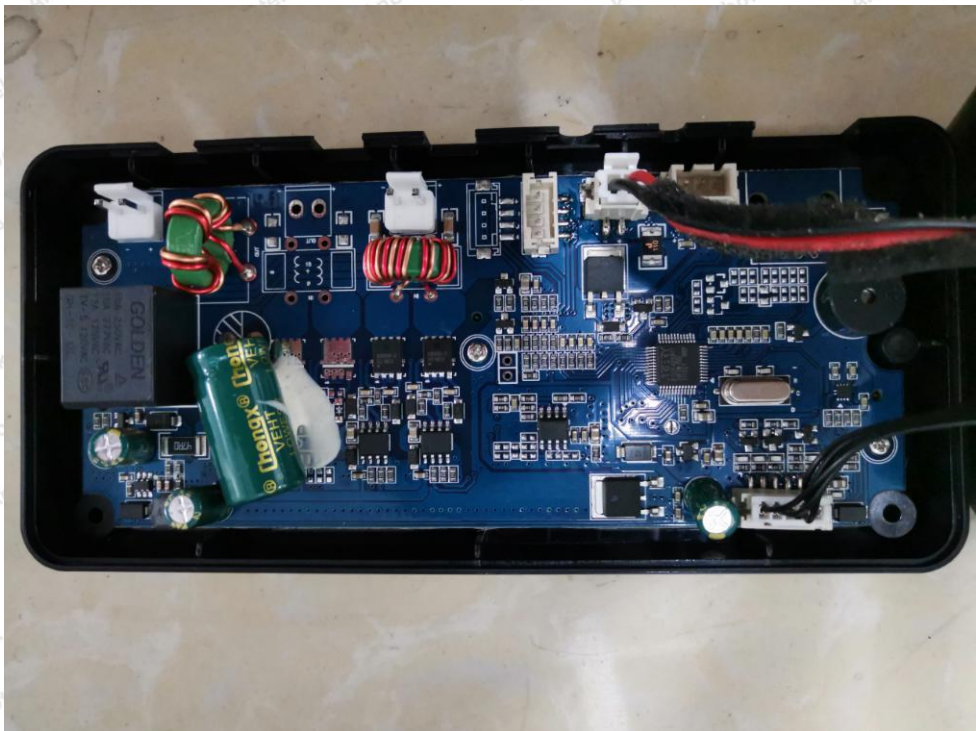


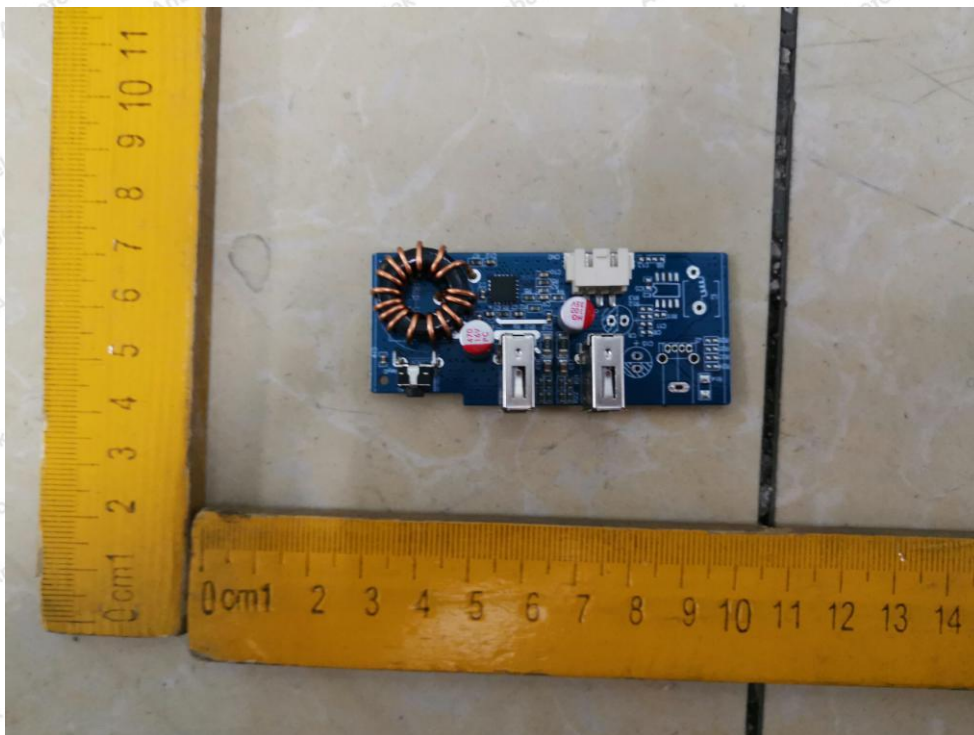




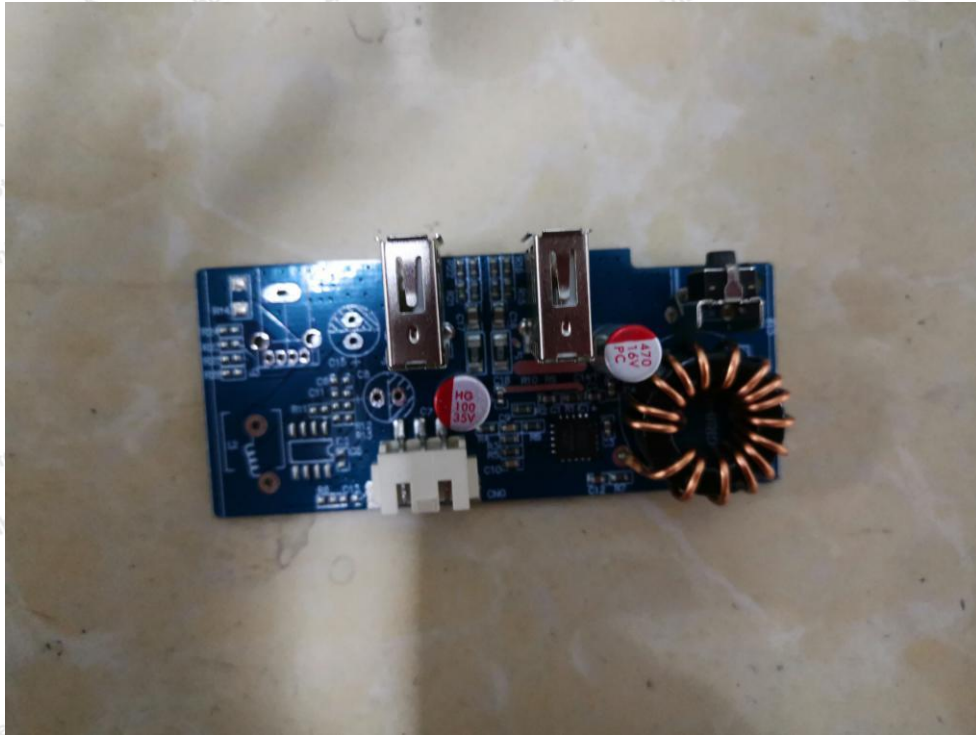


APPENDIX III -- INTERNAL PHOTOGRAPH

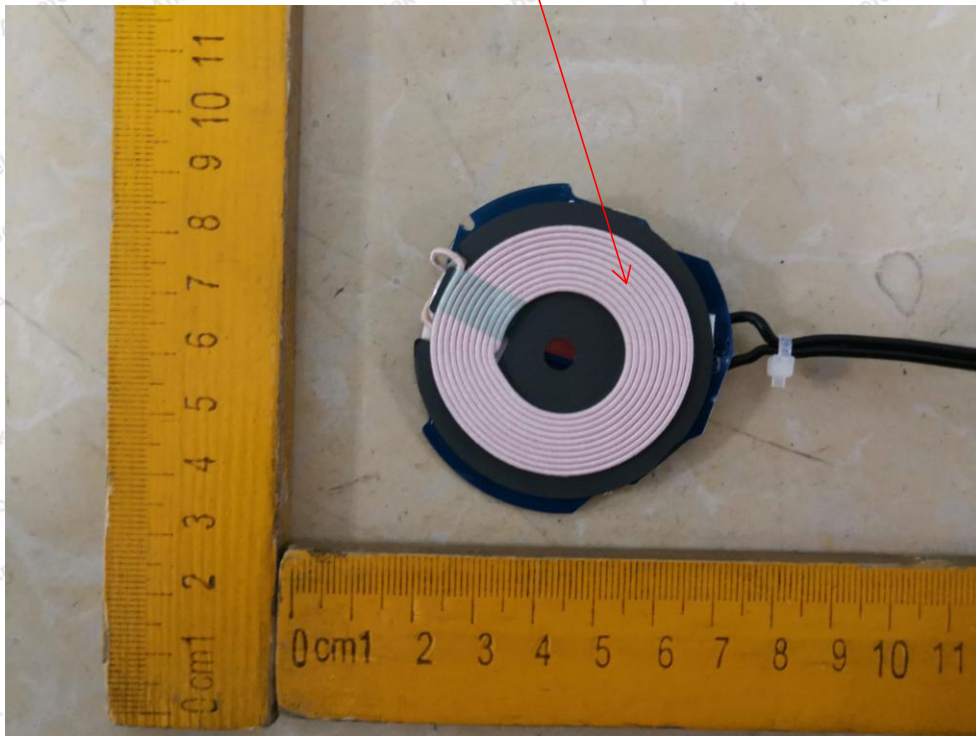


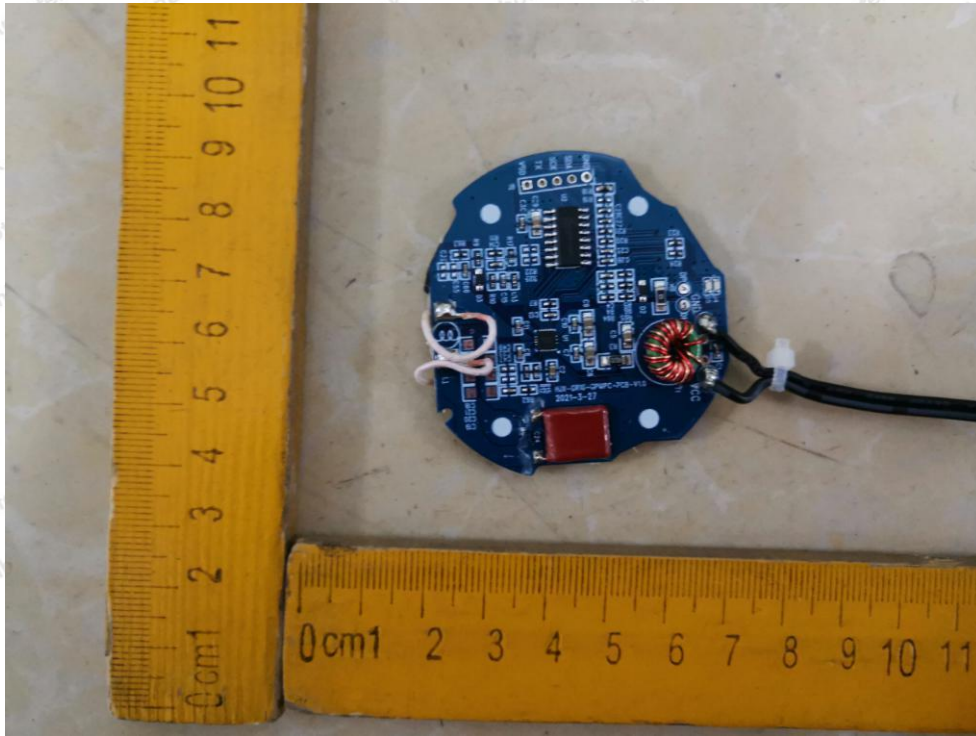






ANT





----- End of Report -----