

- please change the channel in the menu at first).
- 2. Press the Mic's [^ / V] key or [**Low**] / [**Moni**] to adjust the character position by last bit or next bit.
- 3. Turn the selector knob to change the current character or use microphone to input the corresponding character directly.
- 4. Press [**A/B**] key to save the current content. Press [**MHZ**] / [**Menu**] key to delete the current character.
- 5. Press [**PTT**] key to exit.

Channel Copied Quickly (FUN+Call)

- 1. Press [**F**] key or Mic's [**FUN**] key, the [**Menu**] icon will flashing, then press [**Call**] key to copy the content of current channel to the next memory channel.

Talk Around (FUN+*)

The transmitting frequency will same with the receiving frequency if turn on this function.

Note: This function is useless if there is not have offset frequency between transmitting frequency and receiving frequency of the current channel.

Reverse Frequency (FUN+#)

When users turn on this function, the transmitting frequency and receiving frequency would be exchange, the frequency of transmitting would be changed to the receiving frequency, the frequency of receiving would be changed to the transmitting frequency. If the current channel has set the CTCSS/DCS signaling, the CTCSS/DCS encode and CTCSS/DCS decode would be exchanged.

Note: This function is useless if there is not have offset frequency between transmitting frequency and receiving frequency of the current channel.

Menu

- 1. Signaling
- 2. Scan
- 3. Setting
 - Radio setting
 - Radio Info
 - Radio setting

Function	available Values
Function	Available Values
Signal Select	OFF/DTMF/2Tone/5Tone
Sql Model	SQL/Sig
Power Level	Hig Power/Mid Power/Low Power
Bandwidth	Width/Middle/Narrow
CTC/DCS	Ctc Encode/Ctc Decode/Dcs Encode/Dcs Decode
Busy Lock	OFF/CTC/DCS/Carrier
DTMF ID	001
5Tone ID	12345
TOT	Infinite/1/2.../30Minutes
Auto Power Off	OFF/30/60/120Minutes
DTMF Sending Time	50/100/200/300/500MS
Sql Level	OFF/LEV 1/...LEV 9
Scan Mode	TO/CO/SE
Display Mode	Vfo Mode/CH Display Mode/MR Display Mode
TBST Fre	1750HZ/2100HZ/1000HZ/1450HZ
Password Lock	OFF/ON
Back Light	On/5S/10S
Step	2.5K/5K/6.25K/7.5K/8.33K/10K/12.5K/15K/20K
	/25K/30K/50K

Function	available Values
Sub Screen	OFF/frequency/Voltage
KeyFun Lo	A/B/ LOW/ MONI/ SCAN/ TONE/ M/V/ MHZ/MUTE
KeyFun Mz	A/B/ LOW/ MONI/ SCAN/ TONE/ M/V/ MHZ/MUTE
KeyFun CT	AB/ LOW/ MONI/ SCAN/ TONE/ M/V/ MHZ/MUTE
KeyFun V/M	AB/ LOW/ MONI/ SCAN/ TONE/ M/V/ MHZ/MUTE
KeyFun AB	AB/ LOW/ MONI/ SCAN/ TONE/ M/V/ MHZ/MUTE
Instr Screen	OFF/Char String/Picture
Ch Display	Frequency/Name
TX Chanel	Last Receive/Select
TX Inh	Tx Enable/Tx Inhibit
Reset	Factory/Set up
Sub Screen Prompt	Enable/Disable

Menu Operation

Procedure:

1. Short press [Menu] key or long press [F] key enter into the menu mode.
2. Turn selector knob or [+/-] key to select the desired menu number.
3. Press [F] key ,then turn selector knob or press [+/-] key to select the desired parameters
4. After the set, press the [F] key or [Menu] key to saved and returned to the higher level menu, press the [A/B] key or [Vfo] key to cancel and returned the higher level menu.
5. Press [PTT] key to exit.

Menu: Signal Select

Function: Select the Signaling Type

Available Values: OFF/DTMF/2Tone/5Tone

Default: OFF

Menu: Squelch Mode

Function: Squelch Mode Setting

Available Values: SQL/Sig

Default: SQL

Menu: Power Level

Function: Power Setting

Available Values: Hig Power/Mid Power/Low Power

Default: High Power

Menu: Bandwidth Selection

Function: Bandwidth Setting

Available Values: Wide/Middle/Narrow

Default: Wide

Menu: CTCSS/DCS Selection

Function: CTCSS/DCS Frequency Setting

Available Values: Ctc Encode/Ctc Decode/Dcs Encode/Dcs Decode

Menu: Busy Lock

Function: Busy Channel Lockout Setting

Available Values: Off/CTCSS/Carrier

Default: OFF/CTC/DCS/Carrier

Menu: DTMF ID

Function: Display Radio DTMF ID

Menu: 5 Tone ID

Function: Display Radio 5 Tone ID

Menu: TOT

Function: Set the Time-out Timer

Available Values: Infinite/1~30Minutes

Default: 6 Mins

Menu: Auto Power Off

Function: The radio will power-off when there is no operation for a specified period of time

Available Values: OFF/30/60/120 Minutes

Default: OFF

Menu: DTMF Sending Time

Function: Set the DTMF sending Time

Available Values: 50/100/200/300/500MS

Default: 50MS

Menu: Sql Level

Function: Adjust the Squelch Level

Available Values: OFF/LEV1~LEV9

Default: 5

Menu: Scan Mode

Function: Select the Scan Mode

Available Values: TO/CO/SE

Default: CO

Menu: Display Mode

Function: Select the Display Mode

Available Values: Vfo Mode/CH Display Mode/MR Display Mode

Default: Frequency

Menu: TBST Fre

Function: Select the TBST Frequency

Available Values: 1750/2100/1000/1450

Default: 1750

Press [PTT] + Mic's [V] key to transmit

Menu: Password Lock

Function: Turn On/Off the Password

Available Values: OFF/ON

Default: OFF

Note: the default password "000000" can input by programming software, input the exactly password can enter the standby interface. Press Mic's [MENU] key to empty the inputted password.

Menu: Back light

Function: Set the Backlight

Available Values: ON/ 5S/10S

Default: ON

Menu: Step

Function: Select the Step

Available Values: 2.5/5/6.25/7.5/8.33/10/12.5/15/20/25/30/50K

Default: 12.5k

Menu: Skip

Function: Whether the Current Channel is allowed to Scan

Available Values: Enable/Disable

Default: Enable

Menu: Sub Screen

Function: Display Type of Sub Screen

Available Values: OFF/Frequency/Voltage

Default: Voltage

Menu: KeyFun Setting

Function: Program the Key Assignment

Available Values: AB/LOW/MONI/SCAN/TONE/M/V/MHZ/MUTE

Default: LOW

Menu: KeyFun Setting

Function: Program the Key Assignment

Available Values: AB/LOW/MONI/SCAN/TONE/M/V/MHZ/MUTE

Default: LOW

Menu: KeyFun Setting

Function: Program the Key Assignment

Available Values: AB/LOW/MONI/SCAN/TONE/M/V/MHZ/MUTE

Default: MHZ

Menu: KeyFun Setting

Function: Program the Key Assignment

Available Values: AB/LOW/MONI/SCAN/TONE/M/V/MHZ/MUTE

Default: Tone

Menu: KeyFun Setting

Function: Program the Key Assignment

Available Values: AB/LOW/MONI/Scan/Tone/M/V/MHZ/Mute

Default: V_M

Menu: Instr Screen

Function: Select the Instr Screen

Available Values: OFF/Picture/Character

Default: OFF

Menu: TX Channel

Function: this function is priority transmission

Last receive: it will use the frequency or channel in the last communication to transmit.

Select: it will use the selected frequency and channel to transmit.

Menu: Transmit Disabled

Function: Turn on/off the Transmit Disabled

Available Values: Enable/Disable

Default: Enable

Menu: Reset

Factory reset is to reset all the settings, including memory channels and menu settings Setup reset is to reset menu settings, but keep memory channels you stored.

Menu: Sub Screen Ring

Function: If there have voice prompt when the sub screen receiving the signal.

Available Values: OFF/ON

Key Setting

AB/LOW/MONI/SCAN/TONE/M/V/MHZ/MUTE

1. A/B key

Short press: Switch the home screen/sub screen

2. LOW key

Short press: Switch output power level

Long press: Switch the frequency offset direction

3. MONI key

Short press: Start the monitor

Long press: Turn on/off the channel name display

4. SCAN key

Short press: Start scan

Long press: Turn on/off scan

5. TONE key

Short press: switch the CTCSS/DCS mode

6. M/V key

Short press: Switch frequency/channel mode

Long press: Store the channel

7. MHZ key

Short press: 1M step

Long press: 10M step

8. MUTE key

Short press: Volume halving

Other keys

1. Mic's VFO key, In GMRS RB86, VFO is unvalible.

Short press: Switch frequency/channel mode

2. Mic's CALL key

Short press: Signaling call

3. Mic's MENU key

Short press: Set Menu

4. Mic's Fun key

Short press: Switch on composite key

5. Mic's * key

Short press: Volume halving

6. Mic's # key

Switch the function of the Mic's +/- key: Volume/frequency halving

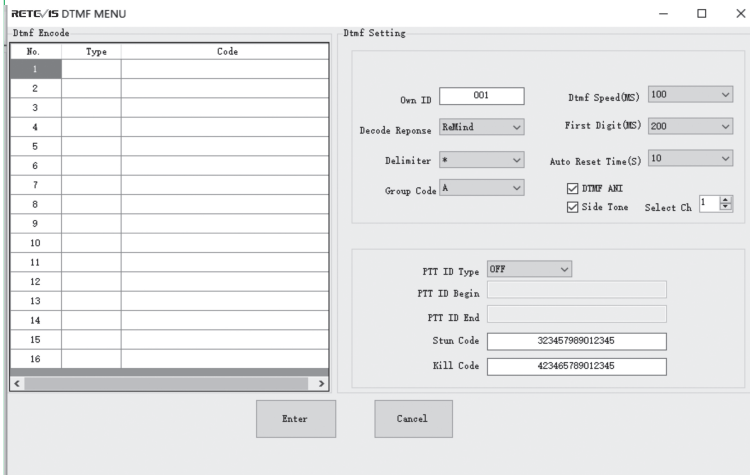
7. Mic's A/B key

Short press: Switch the home screen/sub screen

DTMF operation

DTMF decoding (In programming software)

1. Select the DTMF encode type



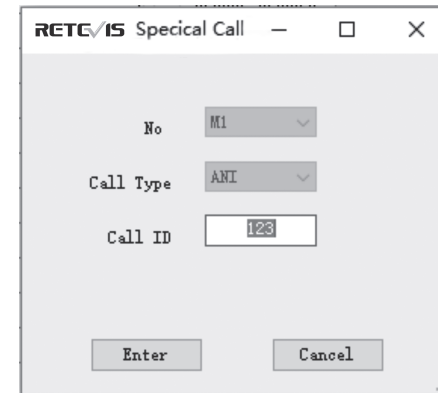
1) "OFF", users can input the desired DTMF code directly

RETG/IS DTMF MENU

Dtmf Encode

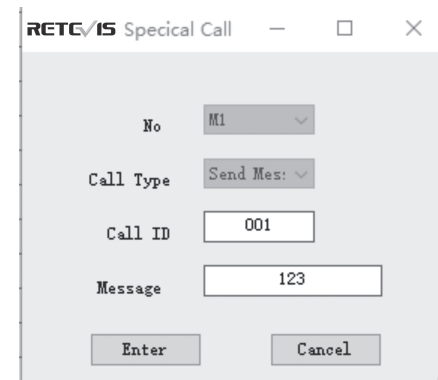
No.	Type	Code
1	OFF	123456789

2) "ANI", users only should input the call ID, which is called radio ID



3) "Message", users should input the call ID firstly which is called radio ID, and then input the Message.

Note: Because DTMF does a long time for message, this function only supports simple message function.



DTMF setting

Stun code: when the radio receives the corresponding DTMF code, the radio will be remote stunned and disabled transmit.

Kill code: when the radio receives the corresponding DTMF code, the radio will be remote killed and disabled receive and transmit.

Select Ch: The default channel when the DTMF is calling

DTMF operating

When the signaling of channel selects the DTMF, the current channel will automatically check if the DTMF signaling is received and decoding it. And achieve a corresponding function according to the received code. The function including: Turn on the squelch, ANI display, message, remote stun, and remote kill.

Note: when the radio is remote stunned or killed, it can be released by programming.

2 Tone Operation

2 Tone encode

Input: the frequency of first tone and second tone

Note: the frequency between of the first tone and second tone should not too similar to avoid the decoding is wrong.

2 Tone decode

Decode Format: the combination of decode, for example: A-B, you should make sure the frequency of first tone is A, and second tone is B. other combination is similar.

5 Tone Operation

5 Tone encode

The write way is same with the DTMF.

5 Tone decode

Function: The function will be achieved when the radio receives the corresponding code.

Select: Turn on squelch

Stun/kill: same with DTMF

Wake: release the state of stun/kill

Simple Trouble Shooting

Problem	Possible Causes and Potential Solutions
(a) Power is on, nothing appears on Display.	+ and - polarities of power connection are reversed. Connect red lead to plus terminal and black lead to minus terminal of DC power supply.
(b) Fuse is blown.	Check and solve problem resulting in blown fuse and replace fuse with new fuse.
(c) Display is too dim.	Dimmer setting is "LAMP-L". Please make the dimmer setting "LAMP-H".
(d) No sound comes from speaker.	Squelch is muted. Decrease squelch level. Tone or CTCSS/DCS squelch is active. Turn CTCSS or DCS squelch off.
(e) Key and Dial do not function.	Key-lock function is activated. Cancel Key-lock function.
(f) Rotating Dial will not change memory channel.	Transceiver is in CALL mode. Press the VFO or memory mode.
(g) PTT key is pressed but transmission does not occur.	Microphone connection is poor. Connect microphone properly. Antenna connection is poor. Coonect antenna properly.

Specifications

General

Frequency	GMRS
Channel	200
Frequency stability	±1ppm
Operating temperature	-30°C~+60°C
Operating voltage	13.8V DC
Dimension	107x125x45mm

Receiver

Sensibility	0.2μV
Adjacent channel selectivity	60dB@12.5KHz 70dB@25KHz
Inter modulation	≥60dB/≥65dB
Spurious rejection	≥70dB
Audio response	+1~-3dB
Audio distortion	<5%
FM hum and noise	≥45dB@25KHz ≥40dB@12.5KHz
Rated audio	3W

Transmitter

Channel No	TX	RX	Max Power	Sub Audio
1	462.5625	462.5625	5	67.0
2	462.5875	462.5875	5	118.8
3	462.6125	462.6125	5	127.3
4	462.6375	462.6375	5	131.8
5	462.6625	462.6625	5	136.5
6	462.6875	462.6875	5	141.3
7	462.7125	462.7125	5	146.2
8	/	/		
9	/	/		
10	/	/		
11	/	/		
12	/	/		
13	/	/		
14	/	/		
15	462.5500	462.5500	20	123
16	462.5750	462.5750	20	D743I
17	462.6000	462.6000	20	D332I
18	462.6250	462.6250	20	127.3
19	462.6500	462.6500	20	D243I
20	462.6750	462.6750	20	D606N
21	462.7000	462.7000	20	D731I
22	462.7250	462.7250	20	136.5
23	467.5500	462.5500	20	136.5
24	467.5750	462.5750	20	136.5
25	467.6000	462.6000	20	136.5
26	467.6250	462.6250	20	136.5
27	467.6500	462.6500	20	136.5
28	467.6750	462.6750	20	136.5
29	467.7000	462.7000	20	136.5
30	467.7250	462.7250	20	136.5

RF ENERGY EXPOSURE AND PRODUCT SAFETY GUIDE FOR PORTABLE TWO-WAY RADIOS



Before using this radio, read this guide which contains important operating instructions for safe usage and rf energy awareness and control for compliance with applicable standards and regulations.

This two-way radio uses electromagnetic energy in the radio frequency (RF) spectrum to provide communications between two or more users over a distance. RF energy, which when used improperly, can cause biological damage.

All Retevis two-way radios are designed, manufactured, and tested to ensure they meet government-established RF exposure levels. In addition, manufacturers also recommend specific operating instructions to users of two-way radios. These instructions are important because they inform users about RF energy exposure and provide simple procedures on how to control it.

Please refer to the following websites for more information on what RF energy exposure is and how

Local Government Regulations

When two-way radios are used as a consequence of employment, the Local Government Regulations requires users to be fully aware of and able to control their exposure to meet occupational requirements. Exposure awareness can be facilitated by the use of a product label directing users to specific user awareness information. Your Retevis two-way radio has a RF Exposure Product Label. Also, your Retevis user manual, or separate safety booklet includes information and operating instructions required to control your RF exposure and to satisfy compliance requirements.

Radio License

Governments keep the radios in classification, business two-way radios operate on radio frequencies that are regulated by the local radio management departments (FCC, ISED, OFCOM, ANFR, BFTK, Bundesnetzagentur...). To transmit on these frequencies, you are required to have a license issued by them. The detailed classification and the use of your two radios, please contact the local government radio management departments.

Use of this radio outside the country where it was intended to be distributed is subject to government regulations and may be prohibited.

Unauthorized modification and adjustment

Changes or modifications not expressly approved by the party responsible for compliance may void the user's authority granted by the local government radio management departments to operate this radio and should not be made. To comply with the corresponding requirements, transmitter adjustments should be made only by or under the supervision of a person certified as technically qualified to perform transmitter maintenance and repairs in the private land mobile and fixed services as certified by an organization representative of the user of those services.

Replacement of any transmitter component (crystal, semiconductor, etc.) not authorized by the local government radio management departments equipment authorization for this radio could violate the rules.

FCC Requirements:

This device complies with part 15 of the FCC Rules. Operation is subject to the condition that this device does not cause harmful interference. (Licensed radios are applicable);

This device complies with part 15 of the FCC Rules. Operation is subject to the following two conditions: (Other devices are applicable)

- (1) This device may not cause harmful interference, and
- (2) this device must accept any interference received, including interference that may cause undesired operation.

NOTE:

•This equipment has been tested and found to comply with the limits for a Class A digital device, pursuant to part 15 of the FCC Rules. These limits are designed to provide reasonable protection against harmful interference when the equipment is operated in a commercial environment. This equipment generates, uses, and can radiate

radio frequency energy and, if not installed and used in accordance with the instruction manual, may cause harmful interference to radio communications. Operation of this equipment in a residential area is likely to cause harmful interference in which case the user will be required to correct the interference at his own expense.

- This equipment has been tested and found to comply with the limits for a Class B digital device, pursuant to part 15 of the FCC Rules. These limits are designed to provide reasonable protection against harmful interference in a residential installation. This equipment generates, uses and can radiate radio frequency energy and, if not installed and used in accordance with the instructions, may cause harmful interference to radio communications. However, there is no guarantee that interference will not occur in a particular installation. If this equipment does cause harmful interference to radio or television reception, which can be determined by turning the equipment off and on, the user is encouraged to try to correct the interference by one or more of the following measures:
 - Reorient or relocate the receiving antenna.
 - Increase the separation between the equipment and receiver.
 - Connect the equipment into an outlet on a circuit different from that to which the receiver is connected.
 - Consult the dealer or an experienced radio/TV technician for help.

CE Requirements:

• (Simple EU declaration of conformity) Shenzhen Retevis Technology Co., Ltd. declares that the radio equipment type is in compliance with the essential requirements and other relevant provisions of RED Directive 2014/53/EU and the ROHS Directive 2011/65/EU and the WEEE Directive 2012/19/EU; the full text of the EU declaration of conformity is available at the following internet address: www.retevis.com.

•Restriction Information

This product can be used in EU countries and regions, including: Belgium (BE), Bulgaria (BG), Czech Republic (CZ), Denmark (DK), Germany (DE), Estonia (EE), Ireland (IE), Greece (EL), Spain (ES), France (FR), Croatia (HR), Italy (IT), Cyprus (CY), Latvia (LV), Lithuania (LT), Luxembourg (LU), Hungary (HU), Malta (MT), Netherlands (NL), Austria (AT), Poland (PL), Portugal (PT), Romania (RO), Slovenia (SI), Slovakia (SK), Finland (FI), Sweden (SE) and United Kingdom (UK).

For the warning information of the frequency restriction, please refer to the package or manual section.

•Disposal

The crossed-out wheeled-bin symbol on your product, literature, or packaging reminds you that in the European Union, all electrical and electronic products, batteries, and accumulators (rechargeable batteries) must be taken to designated collection locations at the end of their working life. Do not dispose of these products as unsorted municipal waste. Dispose of them according to the laws in your area.



IC Requirements:

Licence-exempt radio apparatus

This device contains licence-exempt transmitter(s)/receiver(s) that comply with Innovation, Science and Economic Development Canada's licence-exempt RSS(s). Operation is subject to the following two conditions:

- (1) This device may not cause interference.
- (2) This device must accept any interference, including interference that may cause undesired operation of the device.

Le présent appareil est conforme aux CNR d'Industrie Canada applicables aux appareils radio exempts de licence. L'exploitation est autorisée aux deux conditions suivantes :

- (1) l'appareil ne doit pas produire de brouillage;
- (2) l'utilisateur de l'appareil doit accepter tout brouillage radioélectrique subi, même si le brouillage est susceptible d'en compromettre le fonctionnement.

RF Exposure Information

- DO NOT operate the radio without a proper antenna attached, as this may damage the radio and may also cause you to exceed RF exposure limits. A proper antenna is the antenna supplied with this radio by the manufacturer or an antenna specifically authorized by the manufacturer for use with this radio, and the antenna gain shall not exceed the specified gain by the manufacturer declared.
- DO NOT transmit for more than 50% of total radio use time, more than 50% of the time can cause RF exposure compliance requirements to be exceeded.
- During transmissions, your radio generates RF energy that can possibly cause interference with other devices or systems. To avoid such interference, turn off the radio in areas where signs are posted to do so.

- DO NOT operate the transmitter in areas that are sensitive to electromagnetic radiation such as hospitals, aircraft, and blasting sites.
- Portable Device, this transmitter may operate with the antenna(s) documented in this filing in Push-to-Talk and body-worn configurations. RF exposure compliance is limited to the specific belt-clip and accessory configurations as documented in this filing and the separation distance between user and the device or its antenna shall be at least 2.5 cm.
- Mobile Device, during operation, the separation distance between user and the antenna subjects to actual regulations, this separation distance will ensure that there is sufficient distance from a properly installed externally-mounted antenna to satisfy the RF exposure requirements. This equipment should be installed and operated with a minimum distance of 140cm between the radiator and your body.

• Occupational/Controlled Radio, this radio is designed for and classified as "Occupational/Controlled Use Only", meaning it must be used only during the course of employment by individuals aware of the hazards, and the ways to minimize such hazards; NOT intended for use in a General population/uncontrolled environment.

• General population/uncontrolled Radio, this radio is designed for and classified as "General population/uncontrolled Use".

To control your exposure and ensure compliance with the occupational/controlled environment exposure limits, always adhere to the following procedures.

Guidelines:

- User awareness instructions should accompany the device when transferred to other users.
- Do not use this device if the operational requirements described herein are not met.

Operating Instructions:

- Transmit no more than the rated duty factor of 50% of the time. To Transmit (Talk), push the Push to Talk (PTT) button. To receive calls (listen), release the PTT button. Transmitting 50% of the time, or less, is important because the radio generates measurable RF energy exposure only when transmitting in terms of measuring for standards compliance.
- Transmit only when people outside the vehicle are at least the recommended minimum lateral distance away from a properly installed according to installation instructions, externally mounted antenna.
- When operating in front of the face, worn on the body, always place the radio in a Retevis approved clip, holder, holster, case, or body harness for this product. Using approved body-worn accessories is important because the use of Non-Retevis approved accessories may result in exposure levels, which exceed the IEEE/ICNIRP RF exposure limits.

Hand-held Mode

- Hold the radio in a vertical position with the microphone (and other parts of the radio including the antenna) at least 2.5 cm (one inch) away from the nose or lips. The antenna should be kept away from the eyes. Keeping the radio at a proper distance is important as RF exposure decreases with increasing distance from the antenna.



Phone Mode

- When placing or receiving a phone call, hold your radio product as you would a wireless telephone. Speak directly into the microphone.

Electromagnetic Interference/Compatibility

NOTE: Nearly every electronic device is susceptible to electromagnetic interference (EMI) if inadequately shielded, designed, or otherwise configured for electromagnetic compatibility

Electromagnetic Interference/Compatibility

NOTE: Nearly every electronic device is susceptible to electromagnetic interference (EMI) if inadequately shielded, designed, or otherwise configured for electromagnetic compatibility

Avoid Choking Hazard



Small Parts. Not for children under 3 years.

Turn off your radio power in the following conditions:



- Turn off your radio before removing (installing) a battery or accessory or when charging battery.
- Turn off your radio when you are in a potentially hazardous environments: Near electrical blasting caps, in a blasting area, in explosive atmospheres (flammable gas, dust particles, metallic powders, grain powders, etc.).
- Turn off your radio while taking on fuel or while parked at gasoline service stations.
- To avoid electromagnetic interference and/or compatibility conflicts
- Turn off your radio in any facility where posted notices instruct you to do so, hospitals or health care facilities (Pacemakers, Hearing Aids and Other Medical Devices) may be using equipment that is sensitive to external RF energy.
- Turn off your radio when on board an aircraft. Any use of a radio must be in accordance with applicable regulations per airline crew instructions.

Protect your hearing:



- Use the lowest volume necessary to do your job.
 - Turn up the volume only if you are in noisy surroundings.
 - Turn down the volume before adding headset or earpiece.
 - Limit the amount of time you use headsets or earpieces at high volume.
 - When using the radio without a headset or earpiece, do not place the radio's speaker directly against your ear
- Protect your hearing:
- Use careful with the earphone maybe possible excessive sound pressure from earphones and headphones can cause hearing loss.
- Note:** Exposure to loud noises from any source for extended periods of time may temporarily or permanently affect your hearing. The louder the radio's volume, the less time is required before your hearing could be affected. Hearing damage from loud noise is sometimes undetectable at first and can have a cumulative effect.



Avoid Burns:



Antennas

- Do not use any portable radio that has a damaged antenna. If a damaged antenna comes into contact with the skin when the radio is in use, a minor burn can result.

Batteries (if appropriate)

- When the conductive material such as jewelry, keys or chains touch exposed terminals of the batteries, may complete an electrical circuit (short circuit the battery) and become hot to cause bodily injury such as burns. Exercise care in handling any battery, particularly when placing it inside a pocket, purse or other container with metal objects.

Long transmission

- When the transceiver is used for long transmissions, the radiator and chassis will become hot.

Safety Operation:



Forbid

- Do not use charger outdoors or in moist environments, use only in dry locations/conditions.
- Do not disassemble the charger, that may result in risk of electrical shock or fire.
- Do not operate the charger if it has been broken or damaged in any way.
- Do not place a portable radio in the area over an air bag or in the air bag deployment area. The radio may be propelled with great force and cause serious injury to occupants of the vehicle when the air bag inflates.

To reduce risk

- Pull by the plug rather than the cord when disconnecting the charger.
- Unplug the charger from the AC outlet before attempting any maintenance or cleaning.
- Contact Retevis for assistance regarding repairs and service.
- The adapter shall be installed near the equipment and shall be easily accessible

Approved Accessories



- Contact Retevis for assistance regarding repairs and service.
- The adapter shall be installed near the equipment and shall be easily accessible
- This radio meets the RF exposure guidelines when used with the Retevis accessories supplied or designated for the product. Use of other accessories may not ensure compliance with the RF exposure guidelines and may violate regulations.
- For a list of Retevis-approved accessories for your radio model, visit the following website: <http://www.Retevis.com>

RETEVIS

Guarantee

Model Number: _____ Serial Number: _____

Purchasing Date: _____

Dealer: _____ Telephone: _____

User's: _____ Telephone: _____

Country: _____ Address: _____

Post Code: _____ Email: _____

Remarks:

- 1.This guarantee card should be kept by the user, no replacement if lost.
- 2.Most new products carry a two-year manufacturer's warranty from the date of purchase. Further details, pls read <http://www.retevis.com/after-sale/>
- 3.The user can get warranty and after-sales service as below:
 - Contact the seller where you buy.
 - Products Repaired by Our Local Repair Center
- 4.For warranty service, you will need to provide a receipt proof of purchase from the actual seller for verification

Exclusions from Warranty Coverage:

- 1.To any product damaged by accident.
- 2.In the event of misuse or abuse of the product or as a result of unauthorized alterations or repairs.
- 3.If the serial number has been altered, defaced, or removed.

说明书要求

尺寸: 120*160mm

印刷: 黑白印刷

装订: 胶合订

纸张材质: 双胶纸

本页无需印刷

Cut along this line

