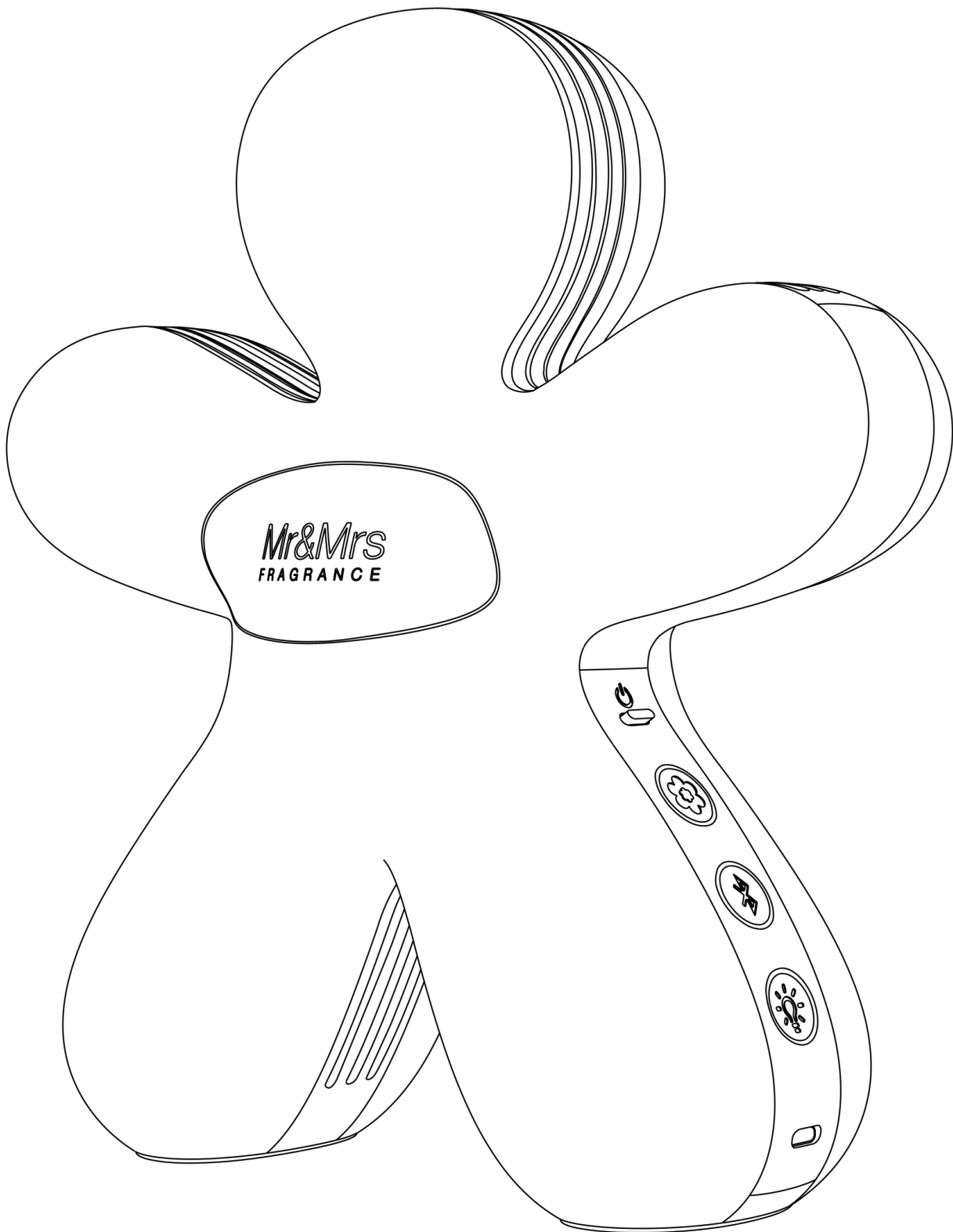


User Manual for George II

---



**GEORGE II**

# Guangdong Strumgle Electrical Appliances Co., Ltd.

## User Manual for George II

---

**\*Please read this manual carefully and keep it before using the product\***

### NOTE & ATTENTION:

- ◇ It is strictly forbidden to scratch this product with hard objects
- ◇ Do not disassemble the main engine for repair or debugging
- ◇ When the product is working, it is strictly forbidden to cover the fragrance device with clothes
- ◇ This product is not a toy. Children are not allowed to operate it

### INSTRUCTIONS:

- 1) The suitable working environment is: the temperature is 5 ° C~40 ° C and humidity less than 80% RH
- 2) If not suitable for a long time, please pack it in a clean bag and store it in a dry and non high temperature place.
- 3) After the life of the product is over, please do not discard it at will, but hand it over to the local qualified organization for disposal.
- 4) This device is not waterproof. Please do not wash the equipment with water. When cleaning, please use a soft and damp cloth. Do not use detergent containing alcohol, ammonia benzene or abrasive, otherwise the equipment will be damaged

### PLACEMENT ENVIRONMENT:

- ★ The machine should be placed in a flat and firm place, horizontally and stably
- ★ The machine should be placed away from heat sources, such as stove, fireplace and other heat sources, and avoid direct sunlight
- ★ The machine should be placed far away from other electrical appliances to avoid electromagnetic interference

### FUNCTIONAL FEATURES:

- 1) Two levels of Fragrances
- 2) Bluetooth Speaker
- 3) Timer setting for 12hrs (controlled in APP)
- 4) 7 colors of decorative light
- 5) Touch panel control+APP control

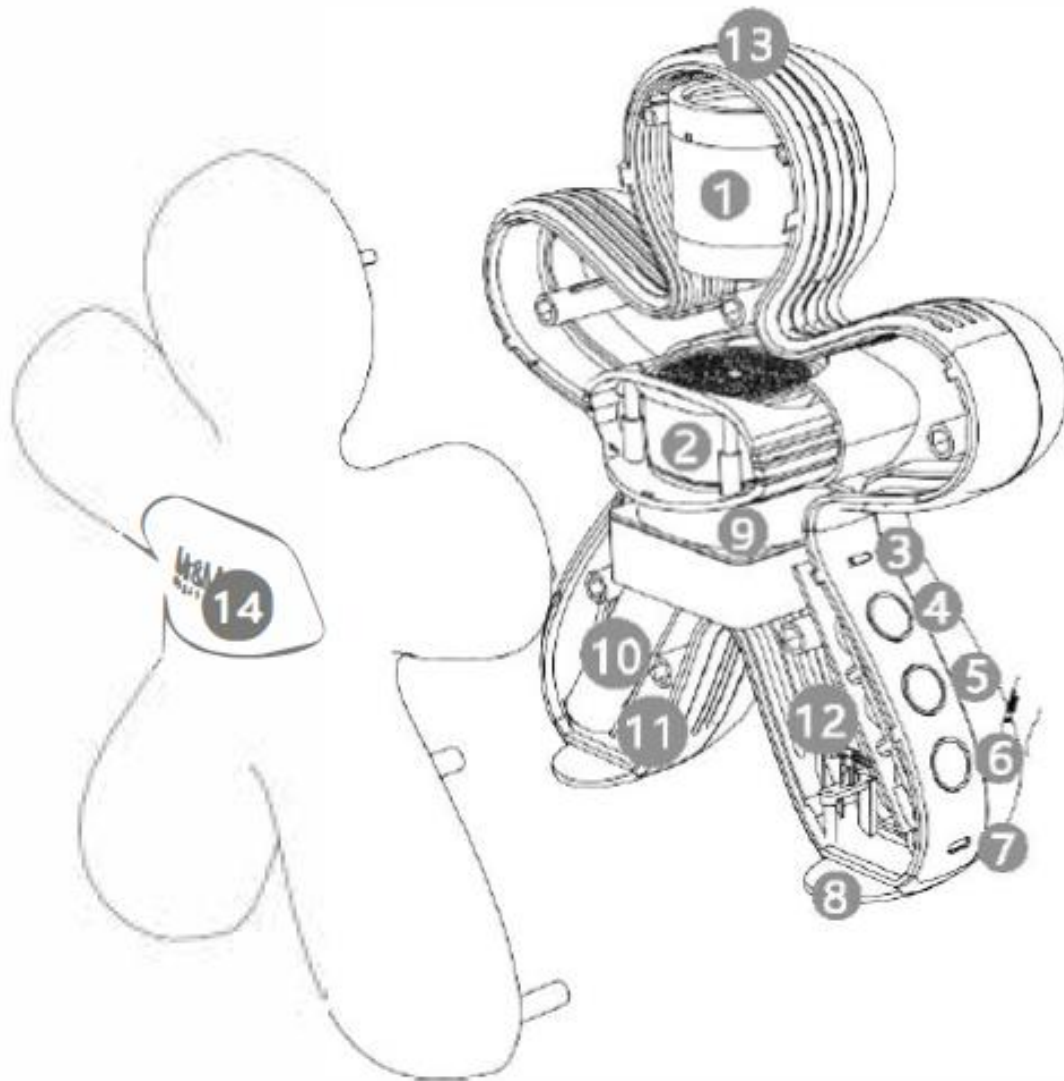
### TECHNICAL PARAMETER:

- a) Input Voltage: DC 5V / 2A
- b) Rated Power: 8 W
- c) Built-in Speaker: 4Ω/ 3W
- d) Bluetooth Version: 5.1+ EDR
- e) Capacity of Battery: 4000 mAh 3.7V

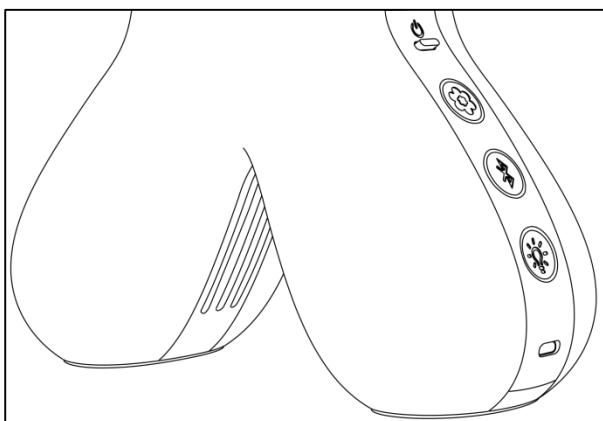
### STRUCTURE DIAGRAM:

## User Manual for George II

- 1: Speaker    2: Capsule    3: On/Off Key    4: Button of Fan    5: Button of Bluetooth  
6: Button for Lighting    7: USB port    8: Silicone pad    9: Fan    10: Lithium Battery  
11: Decorative Light    12: Control Board    13: Outlet of Fragrance & Voice    14:  
Aroma Tray



### OPERATION OF BUTTONS:



# Guangdong Strumgle Electrical Appliances Co., Ltd.

## User Manual for George II

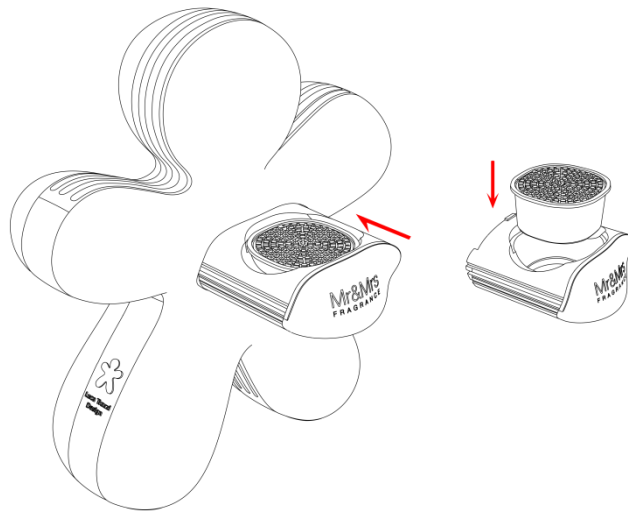
### ● ON/OFF:

1. **POWER ON:** Press this button for 1sec. to power on the machine and the back-lit of blue will be on, and there is a voice tip of "Power On".

2. **POWER OFF:** Keep pressing this button for 3secs., all lamp rings including LIGHTING, BLUETOOTH, FAN will be flashing for 3secs, and there is a voice tip of "Power Off".

\* **Note:** During the 3secs. of powering off, it will be determined failure of power off if voice tip and lamps flashing are not finished.

### ● FRAGRANCE:



1. After Power On, the fragrance function defaults to large gear, and the light ring of button turns BLUE. Work in the large gear for 5 minutes and then stop for 1 minute
2. Touch this button again for small gear, and the color of light ring is RED
3. Touch the fan again to stop working and the light ring goes out
4. When the machine is not turned off, the operation of the button will cycle according to the above rules

### ● BLUETOOTH:

1. After Power on, the Bluetooth button light starts to flash, and the voice plays "bluetouch on".
2. After Bluetooth connection is successful, voice plays "Bluetooth connected", and Bluetooth button light ring is always on.
3. If the user does not pair Bluetooth within 1 minute, the Bluetooth light will turn off automatically after 1 minute.
4. As long as the connection is successful, the light on the Bluetooth button will be on for a long time.
5. After Bluetooth is successfully connected, if you need to pause, just touch the "Bluetooth" button, and the "Bluetooth" light ring starts to flash; Touch the "Bluetooth" button again, the Bluetooth communication is normal and the "Bluetooth" light ring remains on for a long time.

## User Manual for George II

6. In any condition, long press the "Bluetooth" button for 2 seconds, the Bluetooth communication is disconnected, and the voice broadcast "Bluetooth disconnected", and the Bluetooth light ring keeps flashing
7. Touch the "Bluetooth" button for 2 seconds, the Bluetooth function will be turned off, the voice broadcast "bluetouch off", and the "Bluetooth" light ring will be turned off.
8. When the machine is not turned off, touch the "Bluetooth" button once to turn on the Bluetooth function again

### \* Note:

- a. Please refer to the user manual of your device to turn on the Bluetooth of your device (mobile phone, tablet, computer or other). The operation steps of different devices are different
- b. In order to ensure a smooth Bluetooth link, please keep the distance between the device and the aromatherapy machine within 10 meters, and at the same time, there should be no obstruction between the two devices
- c. Bluetooth function will consume battery power, please turn off Bluetooth function when not in use

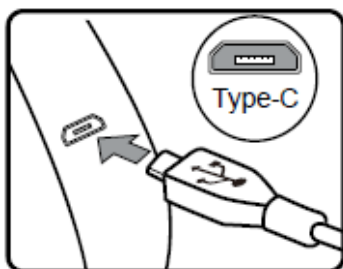
### ● LIGHTING:



1. The first time you touch the "light" button, the light ring lights up, and the atmosphere light turns on the automatic cycle.
2. Touch the "light" button from the second time to the eighth time to select the color you like. The color selection order is: Purple - yellow - red - Blue - Green - cyan – white.
3. In any condition, press and hold for 3 seconds to turn off the machine. After the machine is turned off, the light will go out and the ambient light will go out at the same time.

**\* The above functions can also be controlled through the George APP of the product. Please refer to the app operating instructions for specific operation.**

### CHARGING :



#### 1. Charging Mode:

The power supply of this device is built-in lithium battery with a capacity of 4000mAh, which can be charged directly. It only needs to connect type-C and USB power interface to charge, and the power output is DC 5V-2A

#### 2. First Charging:

2.1 Please fully charge the lithium battery before power this device on for the first time. When the device is charged in the off state, the decorative light will be red and flashes; When the decorative light is always blue, it means that the charging is completed.

# Guangdong Strumgle Electrical Appliances Co., Ltd.

## User Manual for George II

2.2 When the power consumption is less than 5%, the power indicator light flashes red, and the voice tip "low battery" will indicate that the battery needs to be charged immediately. Please charge with an adapter that has been certified.

2.3 Charging when the product is on: the decorative light flashes with red light, and the decorative light normally displays blue light when it is full.

### 3. Charging and Using Time:

3.1 Charge for more than 4 hours for the first time until the power indicator is always blue

3.2 Normal charging time: 4.5 hrs

3.3 Battery life (from full battery to no power) :

\* All functions work in the same time:  $\geq 4.0$  hrs

\* Just for fragrance:  $\geq 9.0$  hrs

\* Just for bluetooth playing:  $\geq 8.0$  hrs

\* Just for decorative lighting:  $> 50$  hrs

### TROUBLESHOOTING :

If your George can't work properly, please check the following before asking for service :

Failures	Cause Analysis	Remedy
Unable to start or abnormal shutdown	No battery	Charging in time
Power off immediately after power on		
No or indistinct fragrance	Haven't put the capsule	Take out the capsule from the package, remove the protective package of the balm, and place the balm correctly in the aromatherapy tank of the product
	The protective package of the ointment was not opened	
	Start low gear work of device	
The Bluetooth connection is not successful, or the music cannot be played normally	The Bluetooth function of the connected device is not turned on	Turn on Bluetooth function in connected device
	Failed to match George within the time limit	Please pair George in Bluetooth device list within 1 minute
	The Bluetooth function of George is disconnected or off	Tap "Bluetooth" again to turn on George's Bluetooth function
Abnormal noise	The volume of Bluetooth music playing is too high, which resonates with the parts of George itself	Turn down the music volume
	Resonance with the table	Place on a solid table or floor
	Incorrect placement of capsule	Check that the capsule is properly placed
The decorative light doesn't work	The lighting function is not turned on	Read the manual and operate the lighting function correctly
Decorative light does not change automatically	Set to manual mode	Check the settings
	Auto color change mode has been cancelled in app	Check whether the APP cancels the automatic color change mode
Unable to Charge	Incorrect connection between pype-c and charging port	Check that the charging port is connected correctly
	The charging USB port doesn't work	Reselect USB charger

# Guangdong Strumgle Electrical Appliances Co., Ltd.

## User Manual for George II

If the machine still does not work normally after the above inspection. Maybe your machine is out of order. Please contact the manufacturer for maintenance.

### Instruction of App for GEORGE II

**Step 1:** Scan and Download the APP  according to the following QR code:



iOS



Android



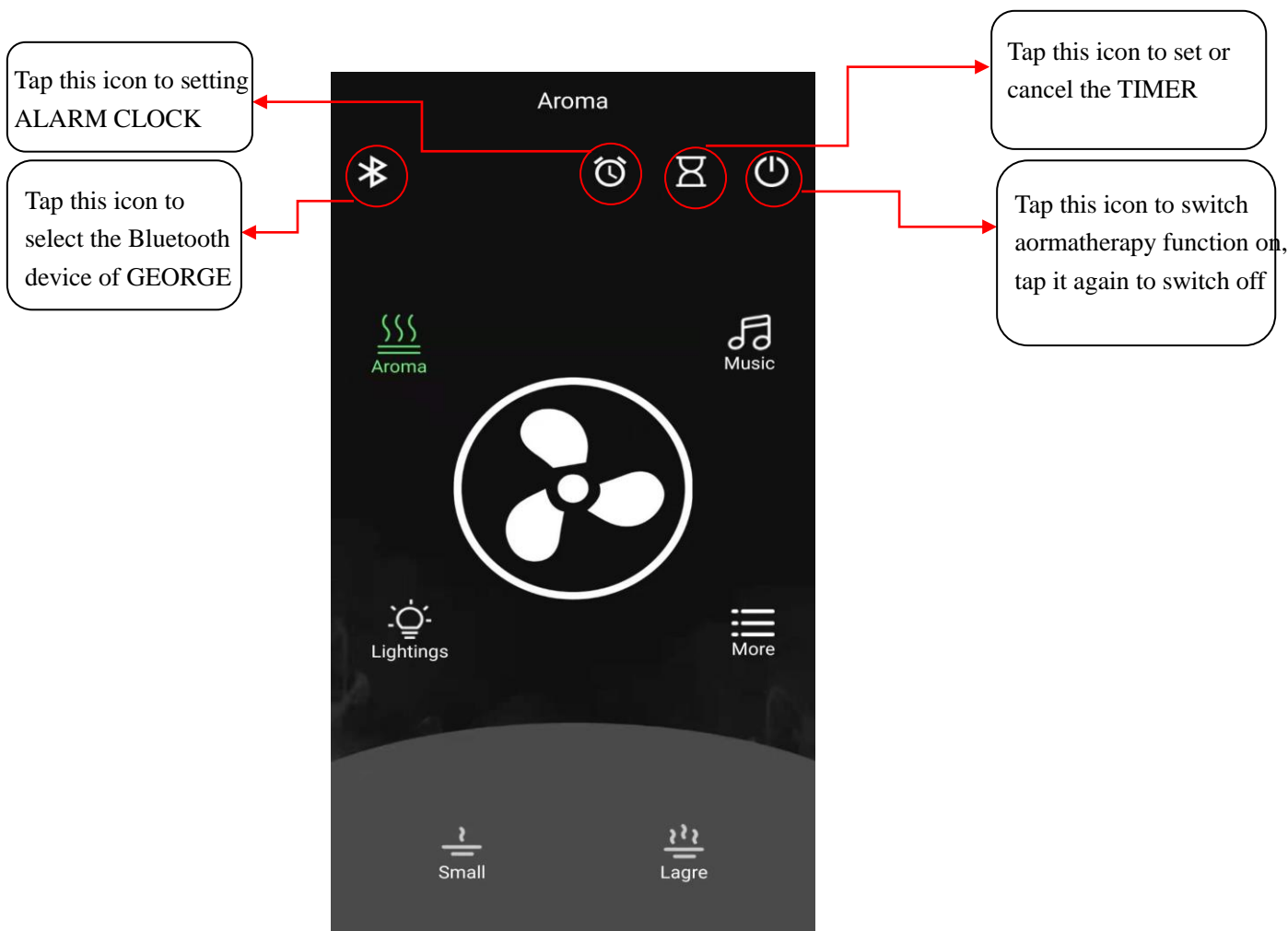
Android for China

\*These QR codes are just samples, the indicated QR codes of George II will be updated when the APP will be online after your confirmation of surface and functions.

**Step 2:** Install the APP in your local device

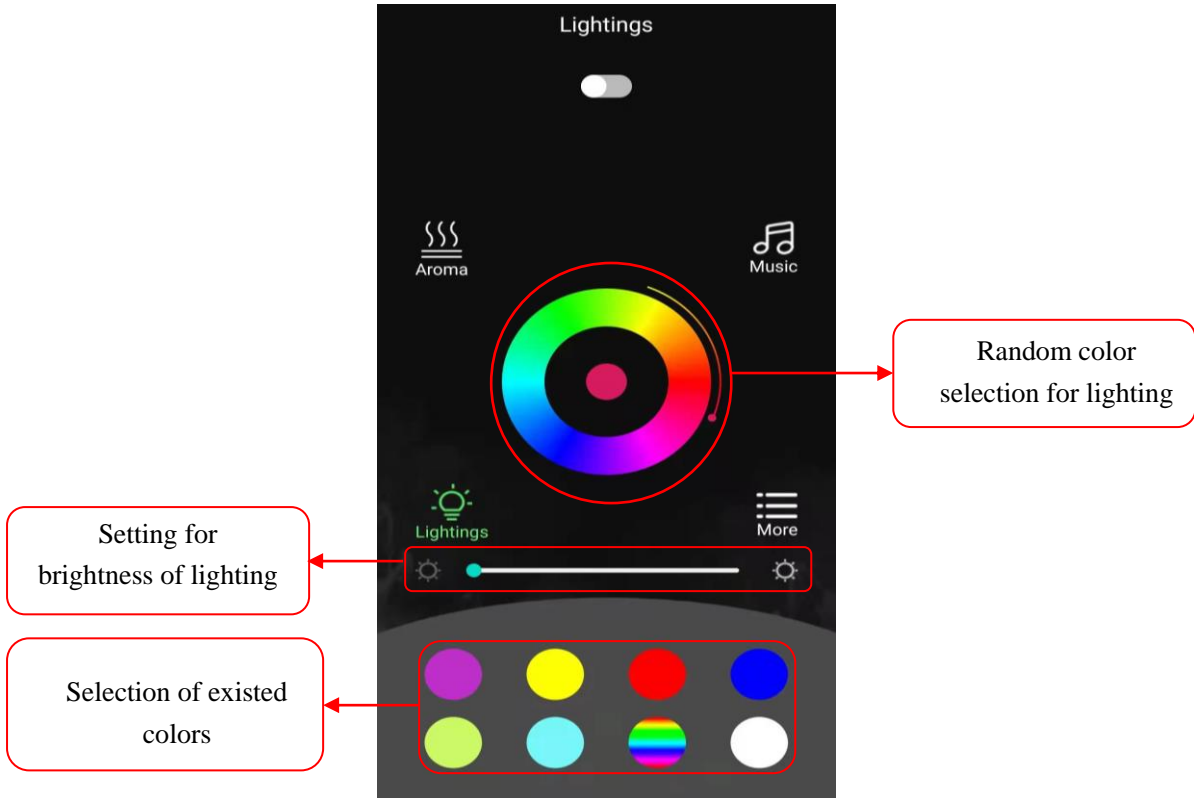
**Step 3:** Click the icon of “George” to enter into the interface of APP

### AROMATHERAPY Interface

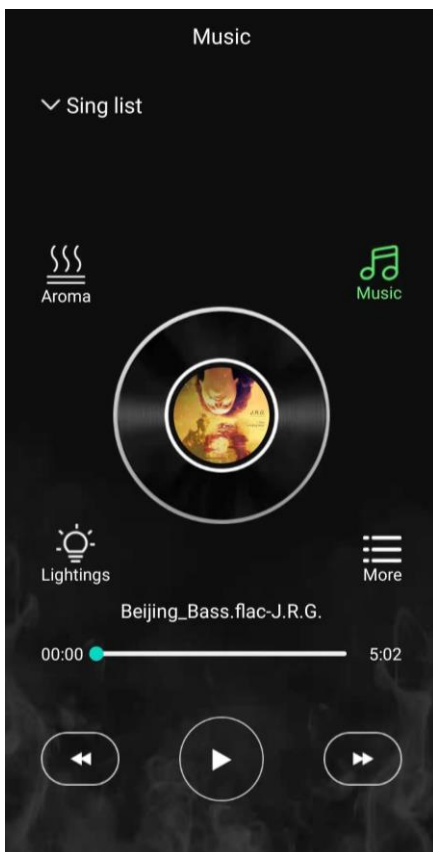


## User Manual for George II

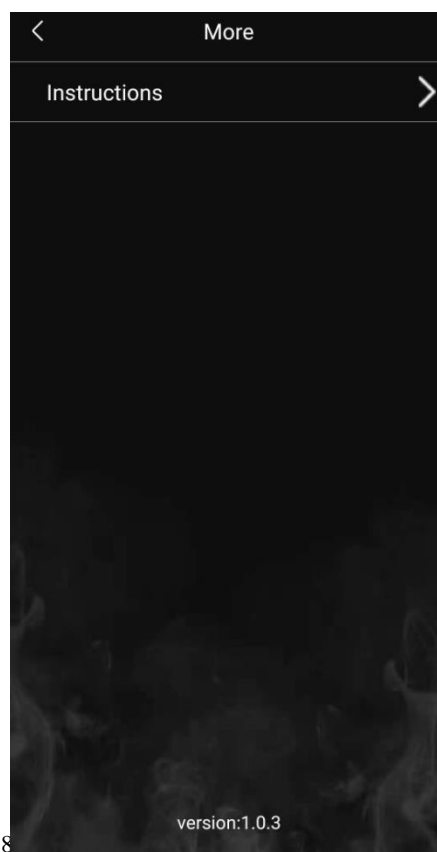
### LIGHTING Interface



### MUSIC Interface



### MORE Interface





# Guangdong Strumgle Electrical Appliances Co., Ltd.

## User Manual for George II

---

### FCC Statement

This equipment has been tested and found to comply with the limits for a Class B digital device, pursuant to part 15 of the FCC Rules. These limits are designed to provide reasonable protection against harmful interference in a residential installation. This equipment generates, uses and can radiate radio frequency energy and, if not installed and used in accordance with the instructions, may cause harmful interference to radio communications. However, there is no guarantee that interference will not occur in a particular installation. If this equipment does cause harmful interference to radio or television reception, which can be determined by turning the equipment off and on, the user is encouraged to try to correct the interference by one or more of the following measures:

- Reorient or relocate the receiving antenna.
- Increase the separation between the equipment and receiver.
- Connect the equipment into an outlet on a circuit different from that to which the receiver is connected.
- Consult the dealer or an experienced radio/TV technician for help.

Caution: Any changes or modifications to this device not explicitly approved by manufacturer could void your authority to operate this equipment.

This device complies with part 15 of the FCC Rules. Operation is subject to the following two conditions: (1) This device may not cause harmful interference, and (2) this device must accept any interference received, including interference that may cause undesired operation.

### RF Exposure Information

The device has been evaluated to meet general RF exposure requirement. The device can be used in portable exposure condition without restriction.