

Antenna Information

To whom it may concern,

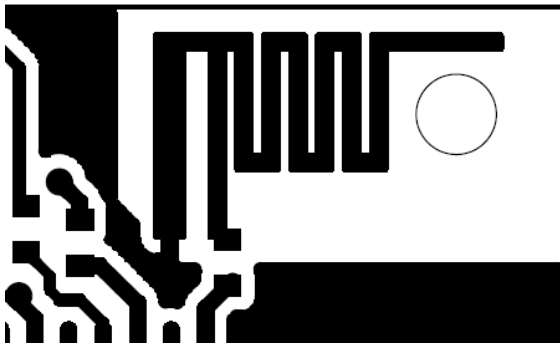
Product name : Bumper Car

Models: ERV-I, BCU1, BCU2, BCU3, BCU4, BCU5, BCU6, BCU7, BCU8, BCU9, BCU10, ERV-II, ERV-III, ERV-IV, ERV-V, ERV-VI, ERV-VII, ERV-VIII, ERV-IX, ERV-X, ERV1, ERV2, ERV3, ERV4, ERV5, ERV6, ERV7, ERV8, ERV9, ERV10  
FCC ID: 2A3NW-ERV-I

The applicable FCC rule part of this product is § 15.249, radiated measurements are used to show compliance with FCC limits for fundamental and spurious emissions.

The Antenna information as below for your reference.

Antenna photo:

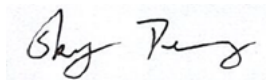


Antenna transmission frequency: 2400-2480MHz

Antenna type: PCB antenna

Yours sincerely,

Contact name: Sky Deng



Company name: MAXLEAD INTERNATIONAL LIMITED

Address: Unit 503, 5/F., Silvercord Tower 2, 30 Canton Rd., Tsimshatsui, Kowloon, Hong Kong

E-mail: sky.dengyulian@gmainland.com

Tel: 13708118490