

User Manual

Automatic WiFi Enabled Litter Box

Leo's Loo Too 

Smarty  Pear 



Safety Instructions

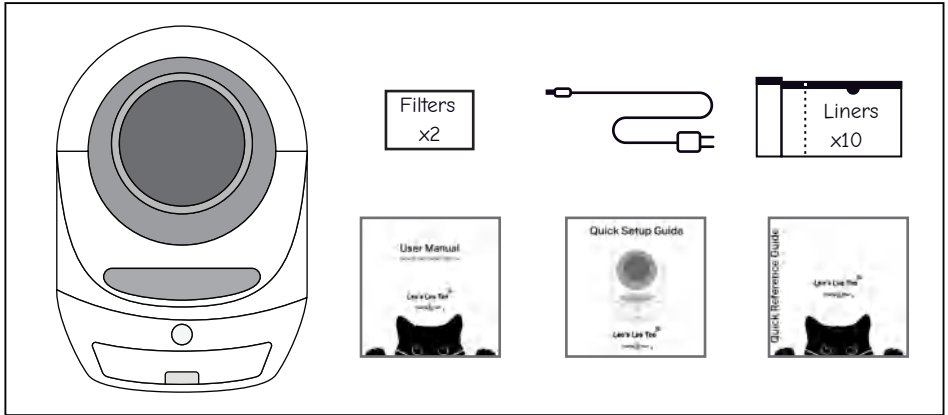
Thank you for purchasing a Leo's Loo Too by Smarty Pear. Please carefully read the following safety instructions before using the

Using your Leo's Loo is an acknowledgement that you have read and agreed to all the safety instructions written in this user

- Do not use this machine in Automatic Mode for cats weighing 3lbs or less.
- Do not power on while your cat is inside or on top of the machine.
- When first powered on, the machine will complete a rotation to calibrate sensors. Do not allow your cat to enter the machine at this time or the calibration process will be
- Use only small particle clay clumping cat litter that absorbs moisture.
- Place the machine on a dry, solid and level surface. Soft or uneven surfaces will impede
- For indoor use only. Do not place in direct sunlight.
- Do not soak the base of the machine in water.
- Empty the waste drawer frequently; no less than once per week.
- Compatible with 2.4G WiFi networks.

For safety or support related questions please contact Smarty Pear customer support at customercare@smartypear.com. Our company reserves the right to interpret and amend this document at any time.

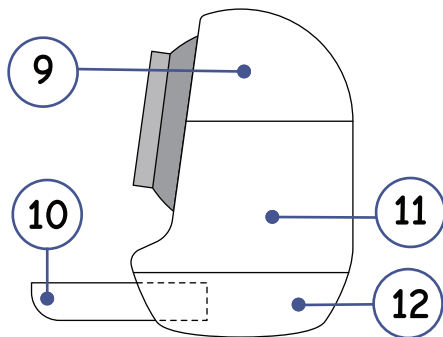
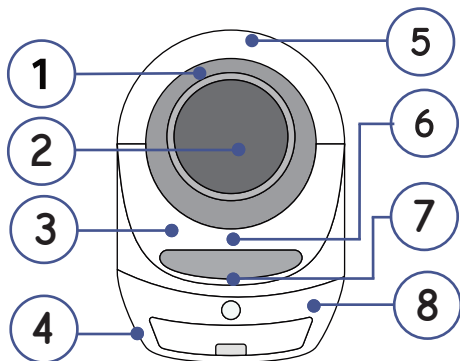
Inside the Box



- Power Adapter with 6' Anti-Chew Cord
- Drawstring Waste Drawer Liners (x10)
- Charcoal Air Filter (x2)
- Quick Setup Guide
- Quick Reference Manual
- User Manual

Please note product registration info located at the bottom of device

Components



1 Rotating Drum (Removable)

2 Sifter

3 Silicon Litter Bladder

4 Weight Sensors

5 Top Cover (Removable)

6 Silicone Step (Replaceable)

7 POWER Button

8 Base

9 Top Cover (Removable)

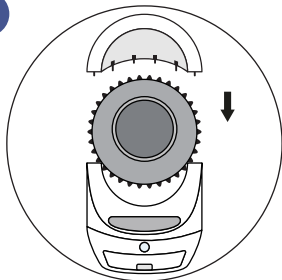
10 Waste Litter Drawer

11 Power Connector

12 Base

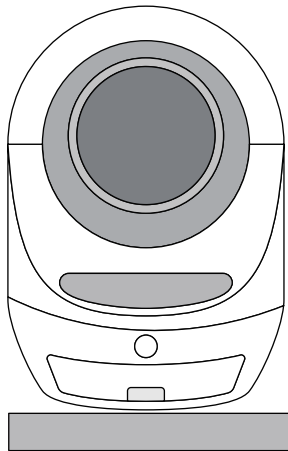
Setup

2



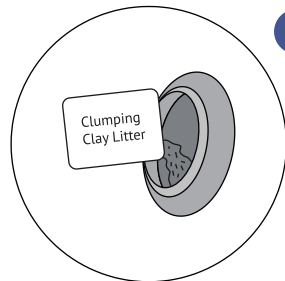
Ensure drum is properly seated and cover on.

1



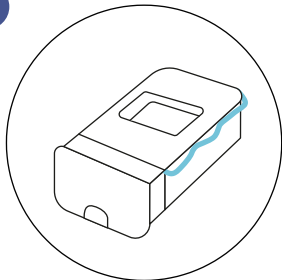
Place your device on a solid surface (no carpets) to ensure sensors function properly.

3



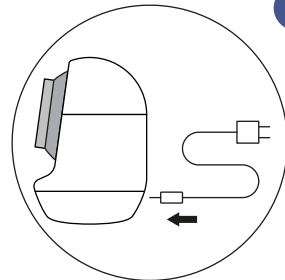
Add 1.2 gallons/10 lbs of Clay Clumping Litter.

4



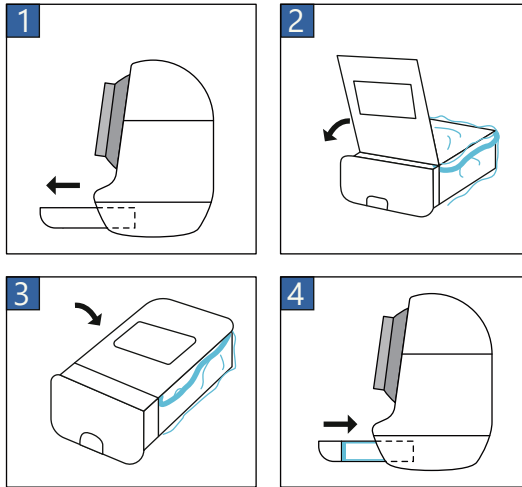
Install Waste Drawer Liners and Filters.

5



Plug your Loo into a power outlet then press the POWER button for 2 seconds to turn on.

Note: When power is turned on, the inner drum will rotate a



Waste Drawer Setup

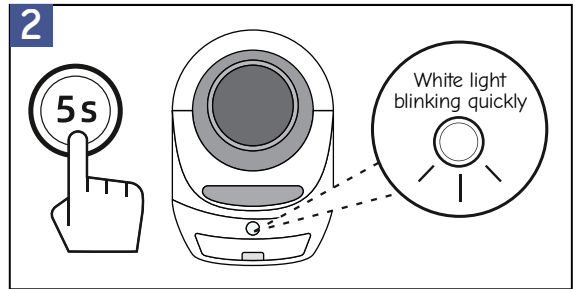
- 1 Remove the litter drawer and lift the top cover.
- 2 Spread the waste drawer liner bag evenly inside and smooth out all edges.
- 3 After adjusting the liner, put the drawer cover back on and make sure the edges of the liner are smooth.
- 4 Insert drawer back in.

App Pairing & Functionality



Scan the QR code to download the app. Create an account and sign in.

Long press the POWER button for 5 seconds. When you hear 3 beeps, the Loo is in pairing mode.



In the app, click on “Add Device” or select “+” in the top right corner. The app will display available devices. Select the Loo you’d like to pair with.



Hardware and software information.

Indicates when cleaning cycle is

Indicates when UV Sterilization

Change Waste Drawer

Turn Automatic Sterilization

Power Loo

Manually initiate cleaning cycle.

View activity

View and adjust app

Adjust number of drum rotations per cleaning

Cleaning Settings

Cleaning Cycles



Cleaning Mode



Automatic Time Delay

Leo's Loo will start to clean 6 seconds after your kitty leaves.



Switch between Automatic and Manual cleaning

Set when cleaning cycle starts after kitty

Schedule daily

Scheduled Settings



Scheduled Cleaning

After setting, your Loo will be cleaned according to the time you set.

Not Active



Sleep Mode

Automatic and timed cleanings will not be performed when activated.

Active

Turn POWER button light

Light Setting

Not Set

Sterilization Timing

Not Set

Schedule periods when the device should be non

Schedule daily

Reset to factory



Reset

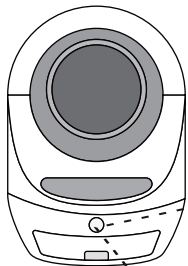


Filter Replacement

Days Remaining: 25 days

Reset filter and litter replacement

POWER Button



Button Operation

On/Off: Press 2 Seconds (1 Beep)

Pairing: Press 5 Seconds (3 Beeps)

Run/Pause: Short Press

Changing Modes: Double Press

Lighting



White Light Steady On: Automatic Mode

White Light Flashing Slowly: Connect Failure

White Light Flashing Quickly: Ready to Pair to App



Red Light Steady On: Manual Mode

Red Light Flashing Slowly: Waste Drawer Full

Red Light Flashing Quickly: Hardware Error



Blue Light Steady On: UV Sterilization Cycle Running

Blue Light Flashing Slowly: Weight Sensor Calibration

Notifications

Information Notifications

LOO USE NOTIFICATION

While in Automatic Mode, you will receive a notification, via the app, each time your kitty finishes using

UV CYCLE NOTIFICATION

Each time the Loo runs a UV sterilization cycle, you will receive a notification in the app.

WASTE DRAWER FULL NOTIFICATION

When your Loo detects that the waste drawer is full, it will enter a pause operation mode and a notification will be sent to your phone through the app to let you know. To resume operation, empty the waste drawer liner bag and replace with new one, then click on app "cleaning" button or quick click the

FAILURE TO INITIATE CLEANING

If your kitty is inside the machine and a cleaning cycle is initiated, the machine will not operate. A warning notification will be sent indicating a cat is detected in the drum. Normal operation will resume once your kitty is clear of the Loo.

TOO MANY CLEANING CYCLES RUN

To avoid wasting electricity, it's recommended that you inspect the Loo and consider switching to Manual Mode for a short period of time.

MACHINE IS OFF WARNING

Please turn the power back on to continue operation.

RECOMMENDED CLEANING

To avoid unpleasant odors, it's recommended that you replace all litter and the carbon air filters every 30 days. To clear this notification, click on settings, then check "replace litter and carbon filter."

Error Notifications

WEIGHT SENSOR ERROR: The sensors are reading inaccurate numbers.

How to clear: Inspect if the weight sensors, located inside the four feet on the bottom of the machine, are on a solid, flat surface (no carpet) and that no foreign objects are underneath the feet (i.e. cat food or litter particles). Then restart the machine.

SAFETY MODE WARNING: The anti-pinch sensor detects a foreign object in the waste chute. This is an uncommon circumstance. When this occurs, the machine stops, rotates backwards and enters Safety Mode.

How to clear: Inspect the machine and remove foreign objects in the waste chute. Then short press the POWER button on the front of the machine or click the clean button in the app to clear warning. Two short presses will resume operation.

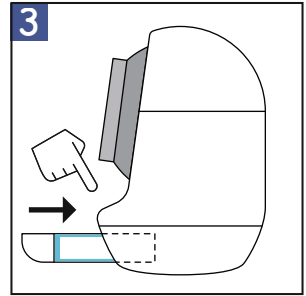
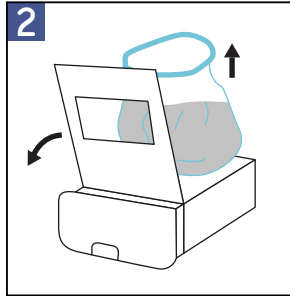
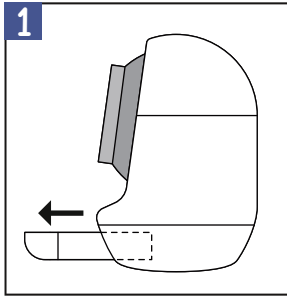
RADAR SENSOR ERROR: Radar system may be faulty.

If this happens multiple times, please contact customer care at customer care@smartypet.com.

MOTOR ERROR: Motor connection or operation error.

If this happens multiple times, please contact customer care at customer care@smartypet.com.

Removing Waste

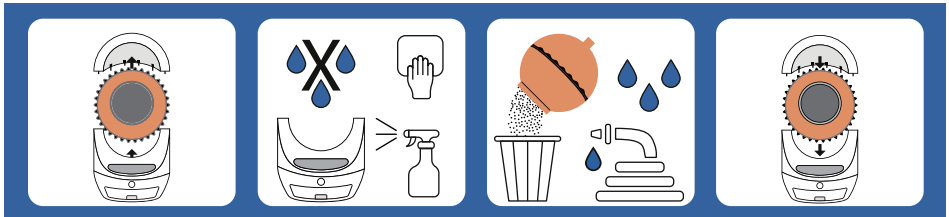


When the waste drawer is full, the POWER button light will turn red and blink slowly. The machine will stop rotating.

- 1 Pull out the drawer.
- 2 Remove and replace the waste drawer liner bag and top off the litter in the drum.
- 3 Reinsert drawer and short press the POWER button twice to reset.

Cleaning Your Loo

- 1 Detach hood and then remove the drum from the base.
- 2 Vacuum base and wipe with cleaning solution and cloth. Do NOT use water on the base as it will damage electronics.
- 3 Empty old litter from drum and then wash out with soap and water. Let dry thoroughly.
- 4 Return drum to unit, install cover and fill with fresh clay clumping litter.



Acclimating Kitty



Please scan the QR code to see an instructional video or read the tips below on how to acclimate your kitties

How to get your kitty to use your new Leo's Loo Too.

- Place a small amount of litter from your old box on top of the litter in the Loo to create a familiar scent.
- Run the machine in manual mode while your cat is present to demonstrate that there is no danger.
- Place food or snacks near the entrance of the machine to encourage your cat to enter and explore.
- Place the Loo near the location of your old litter box. Refrain from cleaning the old litter box or remove it. This will encourage your cat to migrate to the clean environment in the Loo.

Product Specifications

Product Name	Leo's Loo Too
Dimensions	22 x 24 x 27.6 in (56 x 61 x 70 cm)
Input Voltage	12 V
Max Weight Capacity	55 lb (25 kg)
Max Litter Capacity	1.5 gal (6 L)
Material	PP
Product Weight - Net	27.5 lb (12.5 kg)
Product Weight - Gross	37.4 lb (17 kg)
Power - Operating	53 kWh per year
Power - Standby	9 kWh per year
Scale Accuracy	± 1 lb (0.5 kg)

Model: LLT

The complete LIMITED WARRANTY, warnings and cautions are available at

© PurLife Brands Inc. / Palo Alto, CA, USA

Made in China



NOTE: This equipment has been tested and found to comply with the limits for a Class B digital device, pursuant to Part 15 of the FCC Rules. These limits are designed to provide reasonable protection against harmful interference in a residential installation. This equipment generates, uses and can radiate radio frequency energy and, if not installed and used in accordance with the instructions, may cause harmful interference to radio communications. However, there is no guarantee that interference will not occur in a particular installation.

If this equipment does cause harmful interference to radio or television reception, which can be determined by turning the equipment off and on, the user is encouraged to try to correct the interference by one or more of the following measures:

- Reorient or relocate the receiving antenna.
- Increase the separation between the equipment and receiver.
- Connect the equipment into an outlet on a circuit different from that to which the receiver is connected.
- Consult the dealer or an experienced radio/TV technician for help.

Warning: changes or modifications not expressly approved by the party responsible for compliance could void the user's authority to operate the equipment

Radiation Exposure Statement

This equipment complies with FCC radiation exposure limits set forth for an uncontrolled environment.

This equipment should be installed and operated with minimum distance 20cm between the radiator and your body.

FCC Compliance: This device complies with Part 15 of the FCC Rules. Operation is subject to the following two conditions: (1) This device may not cause harmful interference, and (2) this device must accept any interference received, including interference that may cause undesired operation.