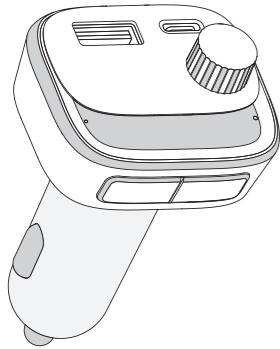


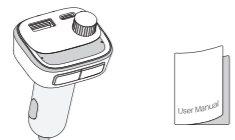
WIRELESS FM TRANSMITTER

USER MANUAL



Thank you for purchasing our product, please read this instruction carefully before use, and keep it for future reference.

Packing list

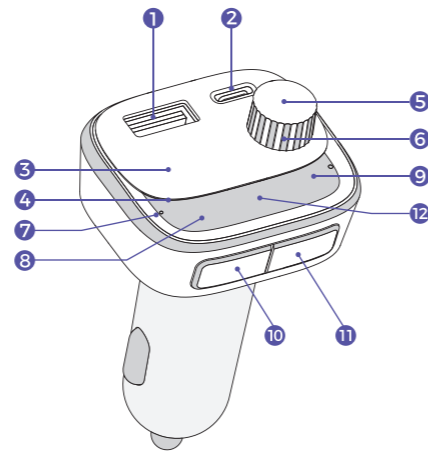


Product host x1 Manual x1

Product structure

- 1 USB-A QC3.0 fast charging port
- 2 Type-C PD30W fast charging port
- 3 Digital display
- 4 Ring light
- 5 CH/M button: enter FM mode; music play/pause; call answer/reject/hang up/call back/private call;
- 6 Knob button: FM frequency addition and subtraction adjustment; volume adjustment
- 7 Microphone
- 8 Touch Previous/Frequency Down
- 9 Touch Next/Frequency Plus
- 10 B button: EQ subwoofer/voice assistant
- 11 Lighting button: light effect switching/shutdown
- 12 Touch the phone button: incoming call answer/hang up

01

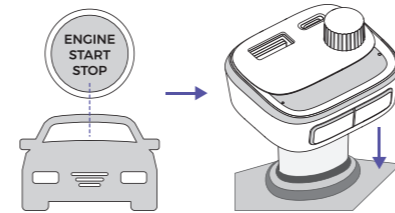


02

Basic parameters

| | |
|---------------------------------|--|
| Model | BH549 |
| Bluetooth effective distance | 10m |
| FM frequency modulation range | US: 88.1-107.9Mhz |
| Supported audio formats | MP3/WMA/WAV/FLAC |
| Support Bluetooth protocol | A2DP/AVRCP/HFP/HSP |
| USB-A fast charging output | QC3.0, DC 5 V/3 A, 9 V/2 A, 12 V/1.5 A |
| USB-C fast charging output port | PD 30 W, DC 5V/3A, 9V/3A, 12V/2.5A |

Start using On/Off



03

Power on: Start the car, insert the BH549 into the car cigarette lighter, and it can be turned on after the power is turned on; when the BH549 is powered on and off, short press any button of the BH549 to turn it on;

Power off: Automatically shut down when power off; when BH549 is powered on, press and hold the light button for 2s to power off

Tip:

When the BH549 is powered off through the switch, the function of the charging port at the car charger will not be affected.

FM frequency and Bluetooth pairing

Important note:

For the first use, you need to adjust the BH549 and the car FM frequency to the same blank frequency (the frequency band that has not been occupied / the frequency where the broadcast cannot be heard), and please ensure that the product and the car FM frequency are adjusted each time you use it. to the same blank frequency (unoccupied frequency band/frequency point where you cannot hear the broadcast/frequency point where you hear noise) to achieve a better sound quality experience.

04

1. Adjust the car's FM to a blank band (a band that has not been occupied), such as FM88.8
2. Press and hold the CH/M button for 2s. After entering the FM mode, the LED display frequency will flash. Rotate the knob to adjust the frequency, clockwise frequency increases, counterclockwise frequency decreases. At this time, adjust the FM frequency of BH549 to the same blank frequency as the car, such as FM88.8

At the same time, there are two other frequency modulation methods as follows:

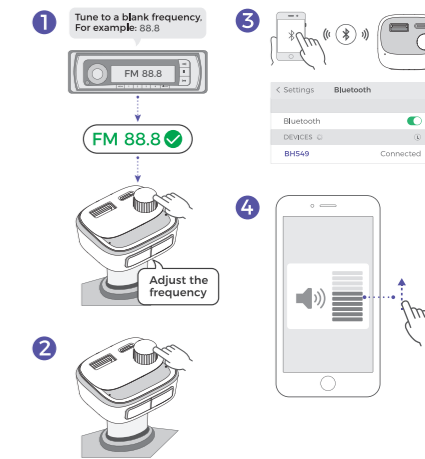
The second type: precise frequency modulation, short-touch button frequency increase, short-touch button frequency reduction;

The third type: fast frequency modulation, long press the button to increase the frequency, long press the button to decrease the frequency;

After the frequency is confirmed, press the CH/M button again to confirm, or automatically exit the FM mode after 3s.

3. Connect to Bluetooth: Turn on the Bluetooth function of the smart device, search for the link "BH549" and use it after the connection is successful; (When using it again, BH549 will reconnect to the last connected device)
4. Please appropriately increase the volume of the mobile device

05



06

FM frequency and Bluetooth pairing

Turn on the ring light: When using for the first time, the light will be turned on by default and the colorful lights will be static; if the light is off, short press the light button to turn on the light;

Turn off the ring light: When the ring light is on, press the light button continuously until the light turns off.

4 Ring light effect adjustment

Short press the light button, you can switch the light effect to colorful lights static, colorful lights breathing dynamic, turn off the lights;

It will memorize the lighting effect before power off.

5 Bluetooth hands-free function

| | |
|--------------------|---|
| Answer the call | short press the CH/M button or touch the button |
| Hang up the call | short press the CH/M button or touch the button |
| Reject the call | long press the CH/M button for 2s |
| Last number replay | Double click CH/M button |
| Private call | After answering the call, long press the CH/M button for 2s |

07



6 Music function

(Please ensure that the following functions are used after the FM pairing is completed)

Music Mode

Bluetooth mode: Smart devices (such as mobile phones), after successfully connecting to Bluetooth, play the music on the smart device. You can connect to the car speaker through FM transmission to play music.



08

2 Music playback operation

| | |
|-----------------------|--------------------------------|
| Play/Pause music | Short press CH/M button |
| Previous or next song | Touch << or >> button |
| Volume up | Rotate the knob clockwise |
| Volume down | Turn the knob counterclockwise |

Voice Assistant

Voice assistant can be used to manually operate BH549

1. Press and hold the "B" button for 2 seconds to enter the voice assistant
2. Press and hold the "B" button for 2 seconds to exit the voice assistant

Kind tips:

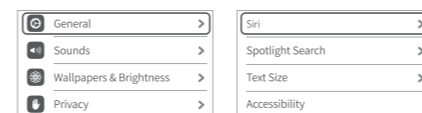
1. The iPhone can call the voice assistant directly through "Hey Siri", make sure the Siri settings are turned on before doing so.
2. If the mobile phone device is Android system, please adjust the volume of the BH549 and the mobile phone to the maximum, and adjust the volume of the car according to your own preferences;
3. The following are the steps to call the "hey Siri" function of Apple's mobile phone voice assistant:

09

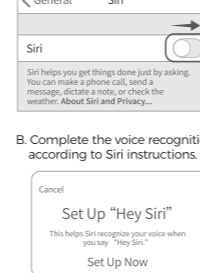
Note:

Some phones do not support this feature. (Supported mobile phone brands are: Apple mobile phone, Samsung mobile phone, native android system mobile phone)

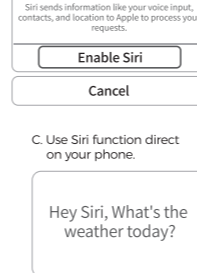
A. Turn on Siri settings on your phone.



B. Complete the voice recognition according to Siri instructions.



C. Use Siri function direct on your phone.



10

Subwoofer Mode

Short press the B button to enter the subwoofer, short press the B button again to exit the subwoofer

Charging Instructions

QC 3.0 Description

1. Smart devices that support fast charging, maximum voltage and current during QC3.0 fast charging: 5V/3A, 9V/2A, 12V/1.5A
2. For smart devices that do not support fast charging, the default normal output is 5V/2.4A;

PD30W Description

1. Smart devices that support fast charging, maximum voltage and current during PD3.0 fast charging: DC 5V/3A, 9V/3A, 12V/2.5A
2. The maximum power can reach 30W, the default normal output is 5V/3A

Note:

When QC3.0 and PD port are charged at the same time, the maximum output is 5V/3A

11

Precautions

1. Do not turn on the volume of the radio too much, so as not to increase the back noise of the sound.
2. Although the power of the FM transmission of this unit is relatively strong, when using it, you should try to avoid the radio frequency points with strong local signals in order to obtain the better sound quality
3. Do not use this product in a particularly high or low temperature, dusty and humid environment.
4. Do not let the product fall, so as to avoid surface damage or damage to the whole machine
5. Do not disassemble the machine without authorization, if you have any questions, please contact the dealer.

NOTE: This equipment has been tested and found to comply with the limits for a Class B digital device, pursuant to part 15 of the FCC Rules. These limits are designed to provide reasonable protection against harmful interference in a residential installation. This equipment generates, uses and can radiate radio frequency energy and, if not installed and used in accordance with the instructions, may cause harmful interference to radio communications. However, there is no guarantee that interference will not occur in a particular installation. If this equipment does cause harmful interference to radio or television reception, which can be determined by turning the equipment off and on, the user is encouraged to try to correct the interference by one or more of the following measures:

- Reorient or relocate the receiving antenna.
- Increase the separation between the equipment and receiver.
- Connect the equipment into an outlet on a circuit different from that to which the receiver is connected.
- Consult the dealer or an experienced radio/TV technician for help

Changes or modifications not expressly approved by the party responsible for compliance could void the user's authority to operate the equipment.

This device complies with Part 15 of the FCC Rules. Operation is subject to the following two conditions: (1) this device may not cause harmful interference, and (2) this device must accept any interference received, including interference that may cause undesired operation.

13

12