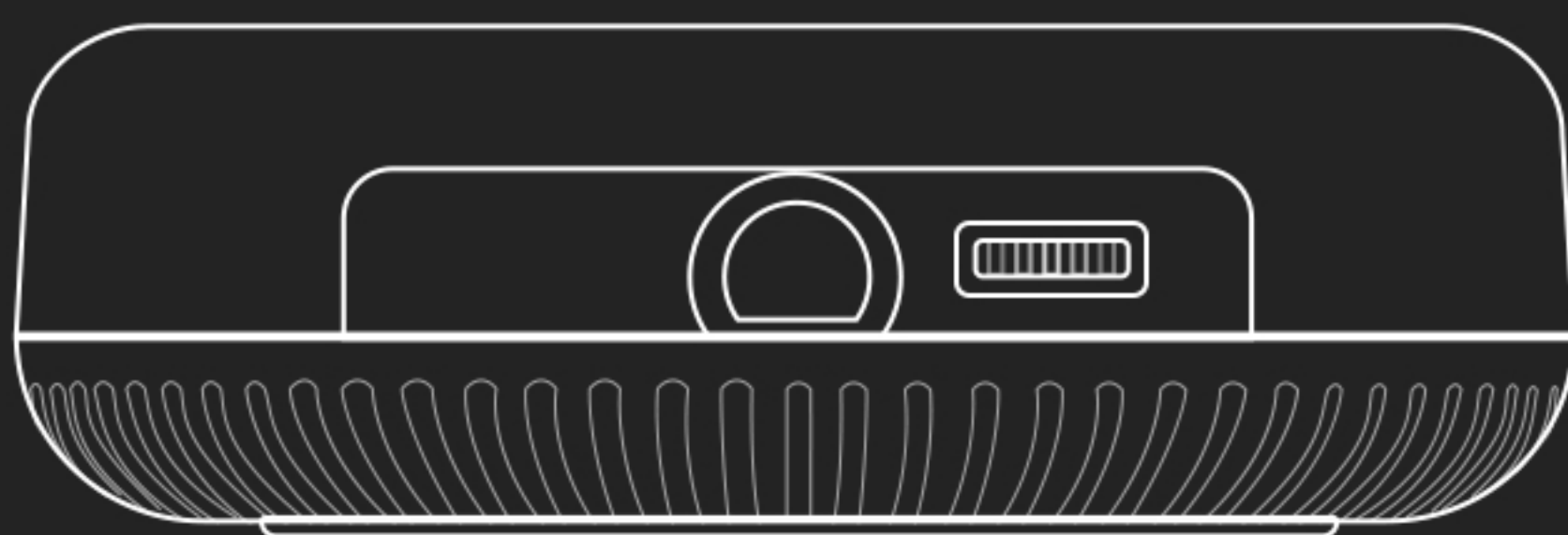


ViewComm iSpace 2

INSTRUCTION MANUAL



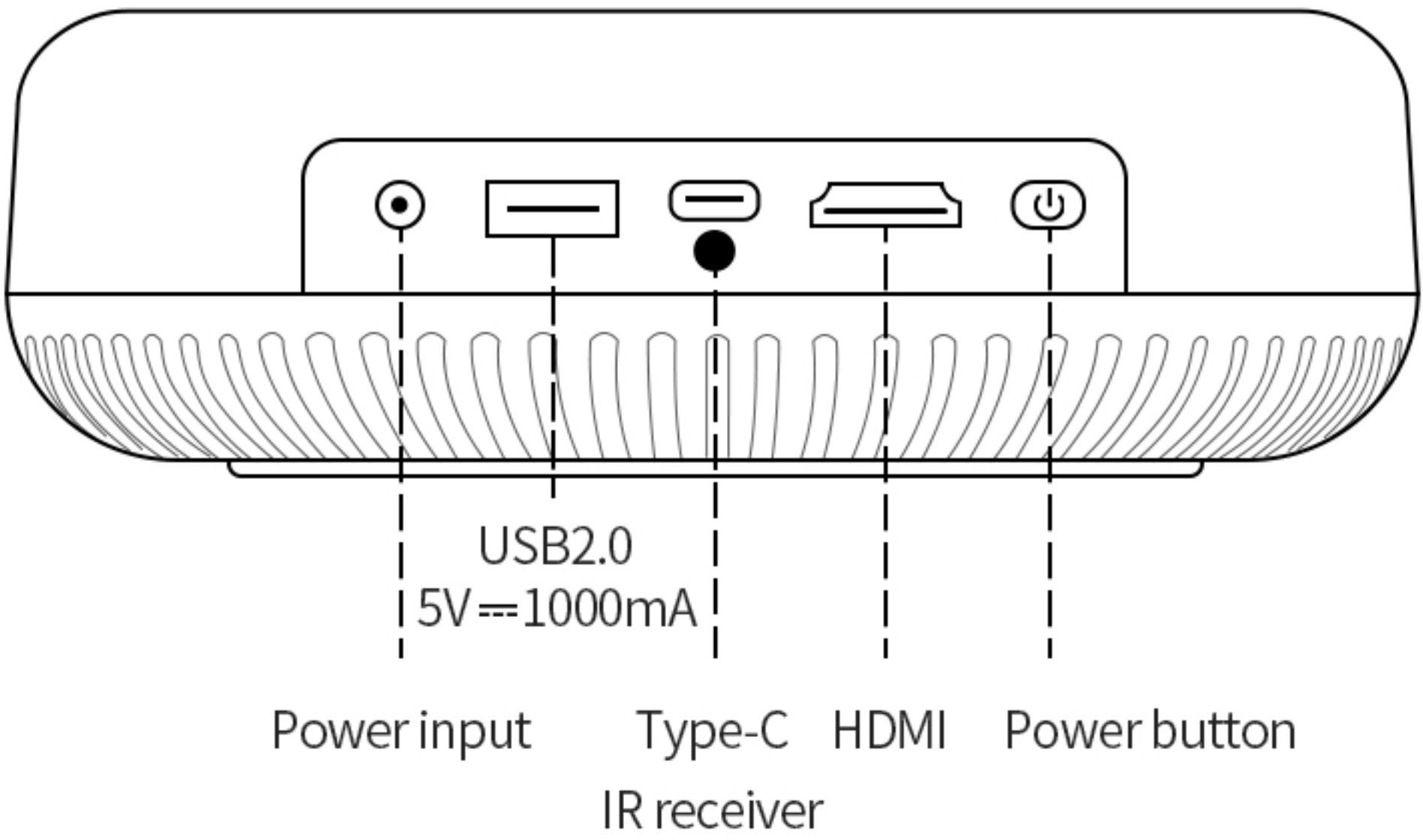
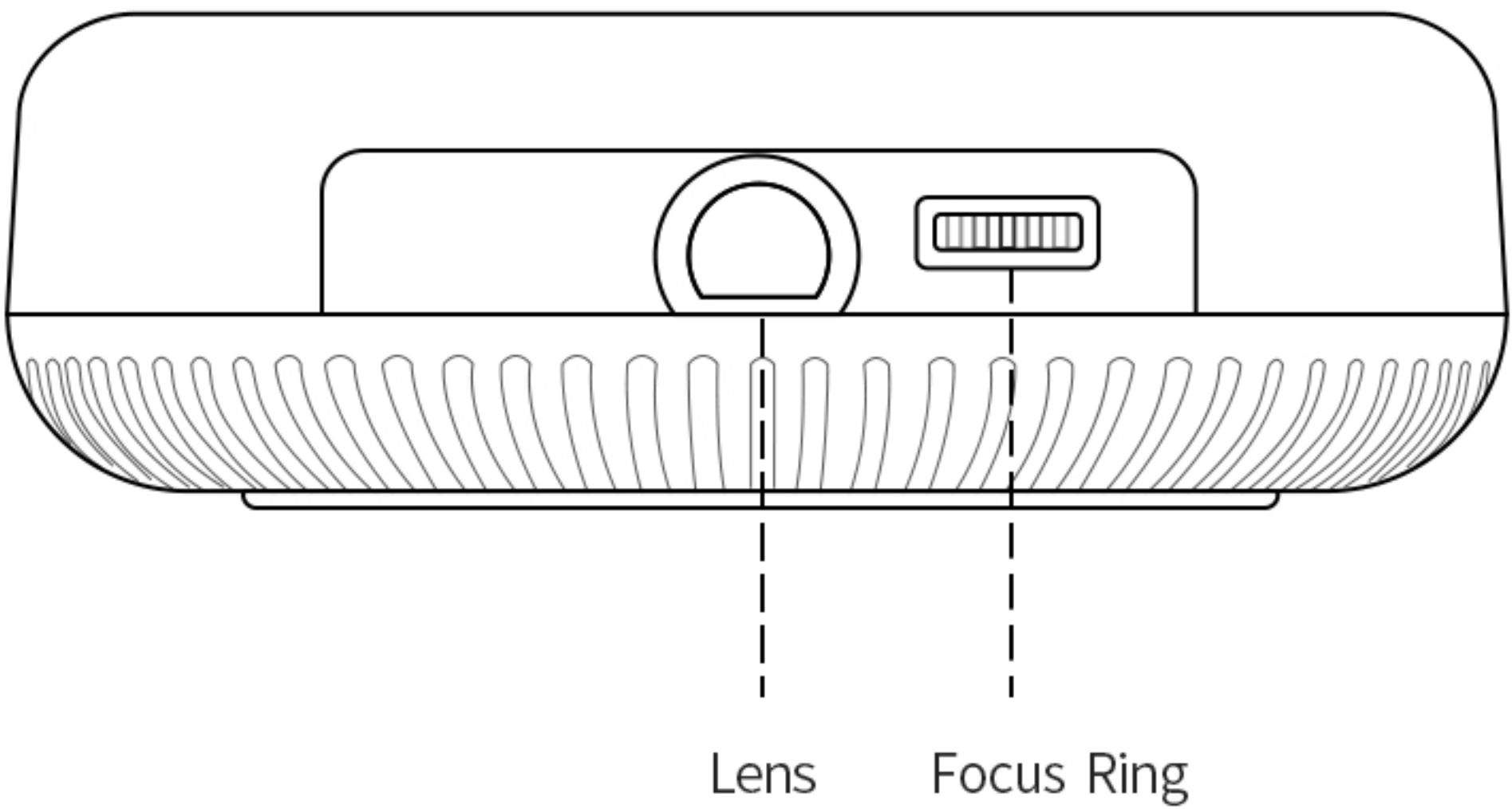
M O V I E • M U S I C
o n t h e g o P L A Y

Projector Intruction

Resolution: 854x480

Auto Keystone Correction: Vertical $\pm 40^{\circ}$

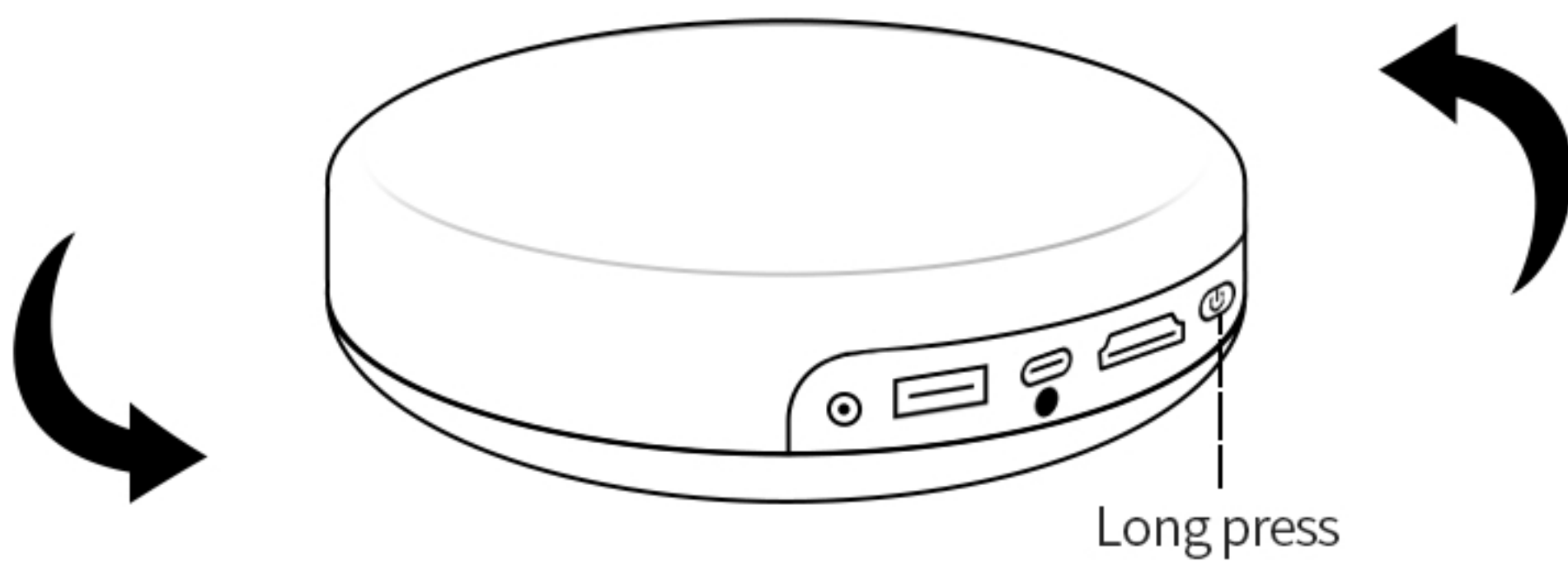
Power consumption: 24W



Please read the instruction manual and safety information
carefully before using this projector
The appearance and function of the projector are subject
to the actual product

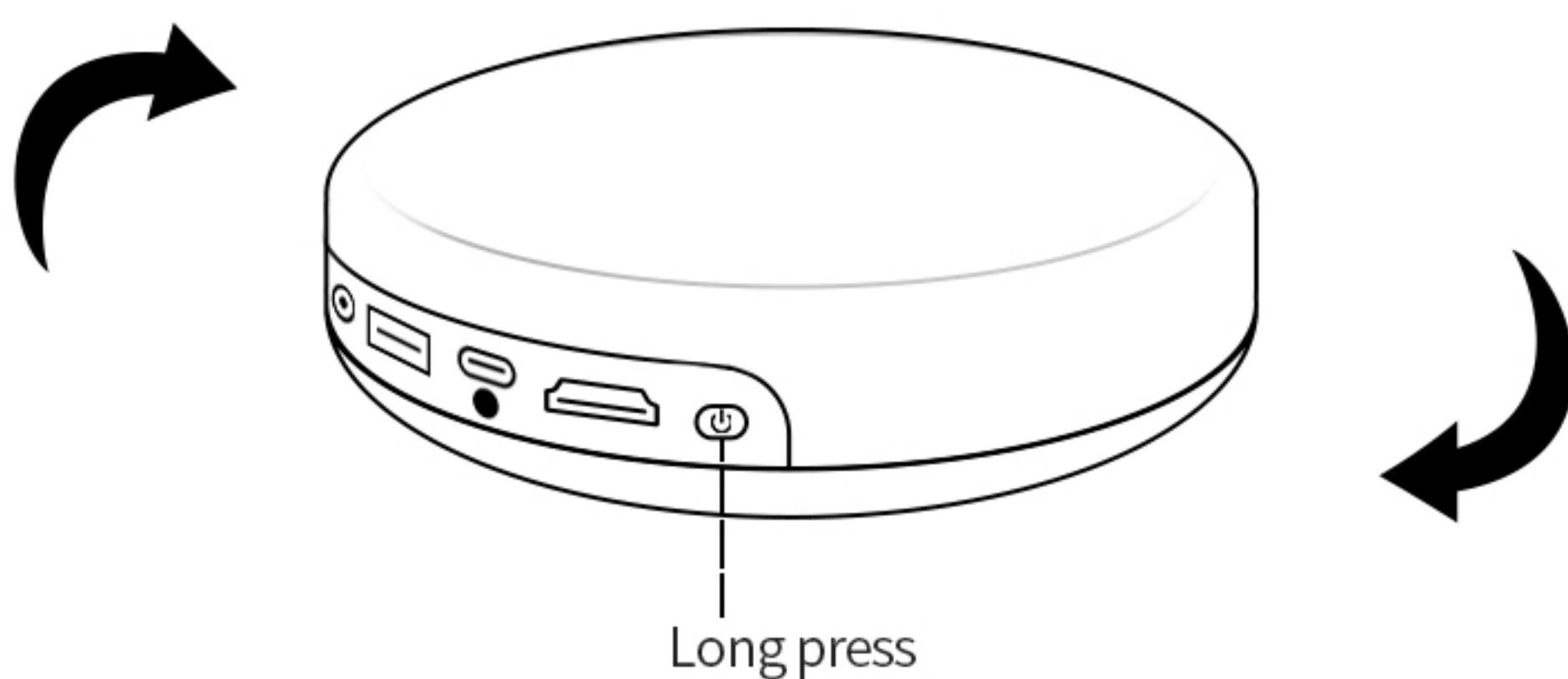
1 Power On/Off

On



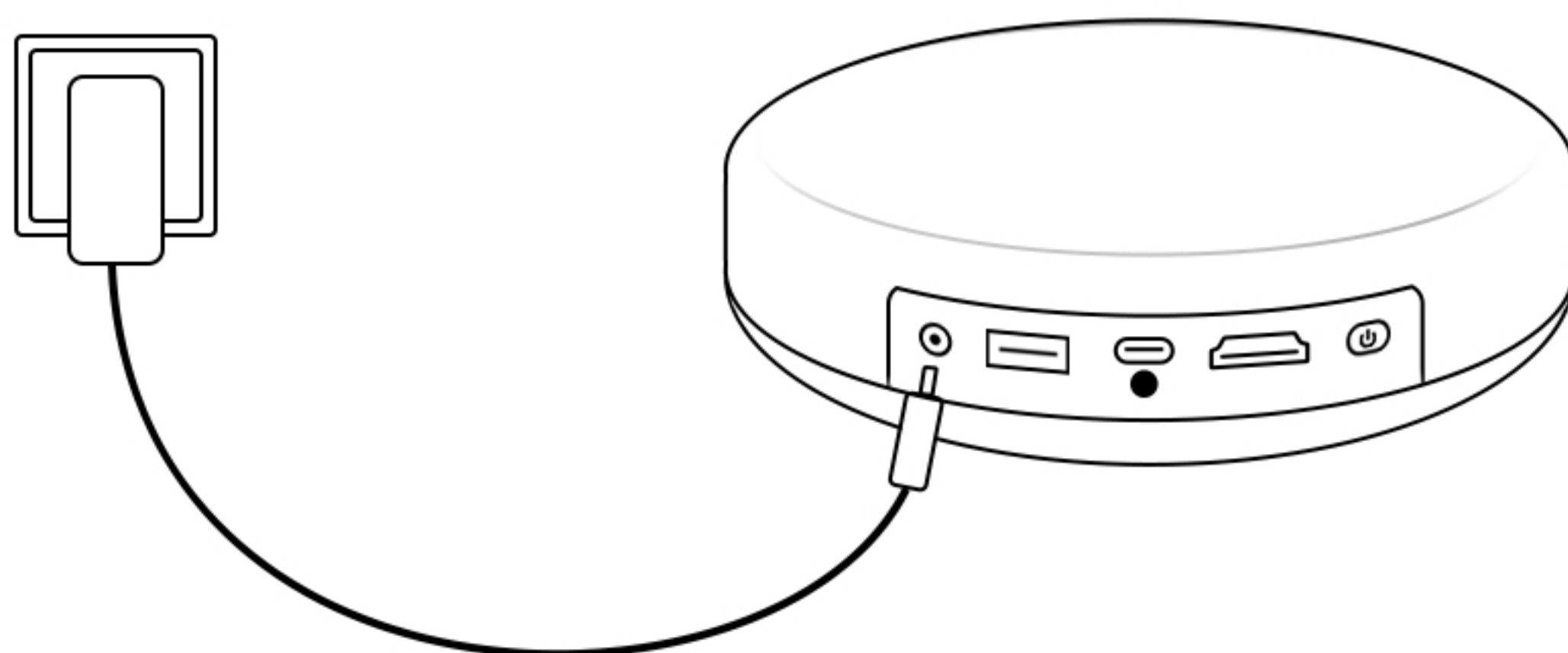
1. Rotate 90° counterclockwise to open the lens cover
2. Long press the power button

Off



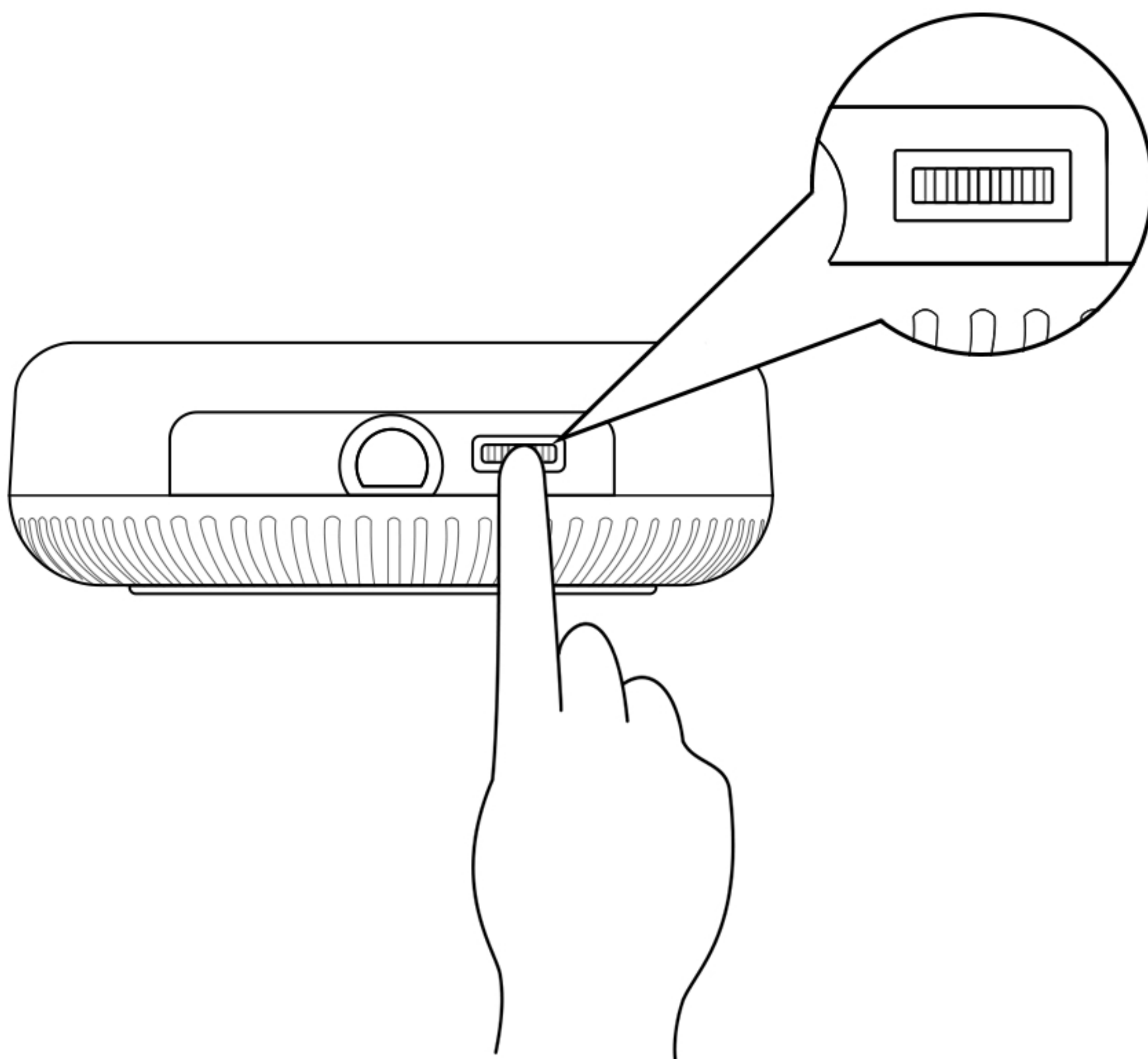
1. Long press the power button
2. Rotate 90° clockwise to close the lens cover

2 Charging



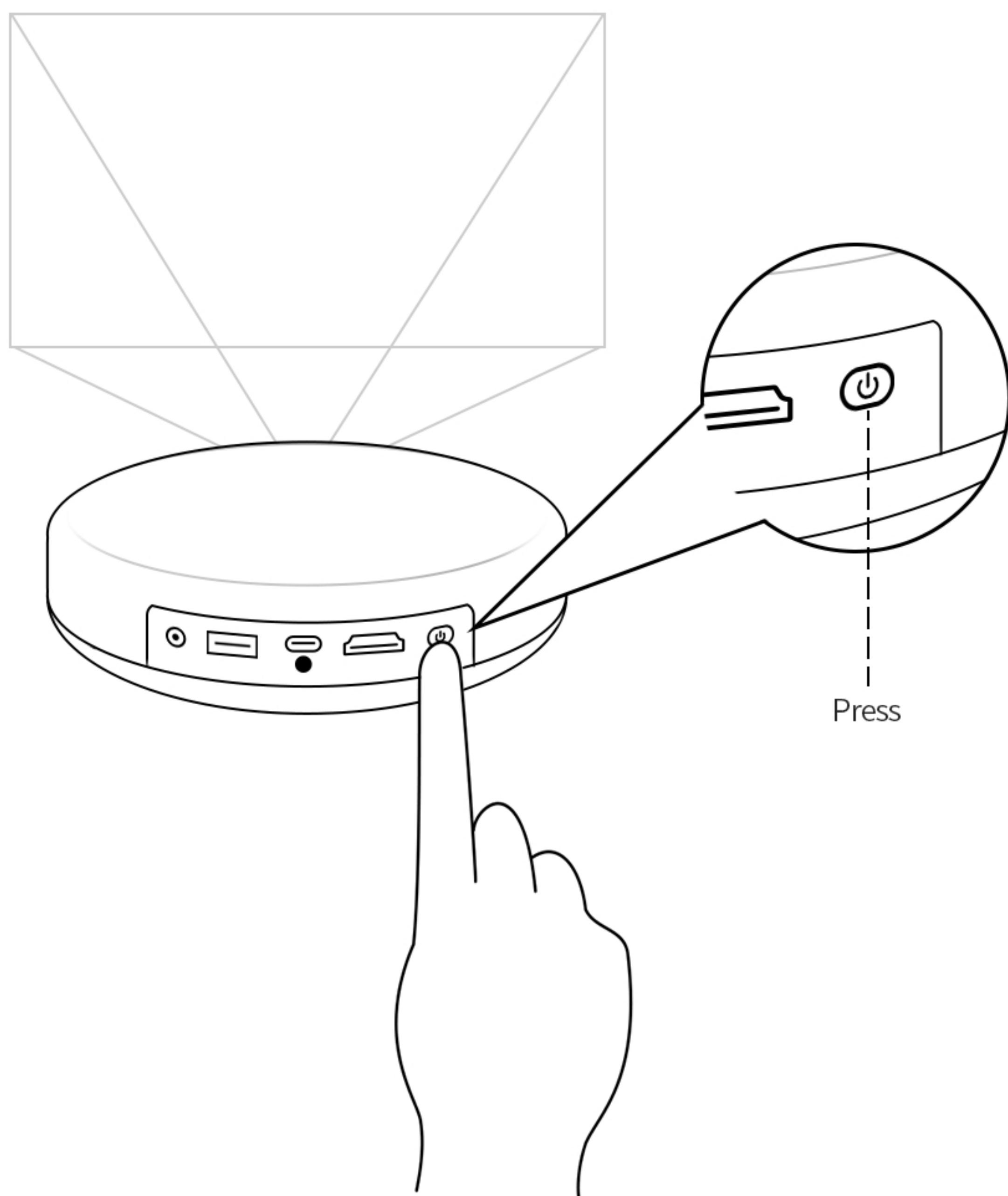
Rotate 90° counterclockwise to expose the power jack and start charging when the power is turned on

3 Focusing



Adjust the focus ring until the image is clear

4 Switch Bluetooth Speaker



In the projecting state

- Rotate 90° clockwise to close the lens cover
- Or press the power button to enter Bluetooth speaker mode

⑤ Indicator Light

- Projector starts: orange light on
- Projecting state: light off
- Bluetooth disconnected: blue light flashes
- Bluetooth connected: blue light always on
- Charging in projection state: light off
- Standby state charging: red light on
- Standby on a full charge: light off
- Battery less than 20%: red light flashes

⑥ More Fiction

This "Instruction Manual" only provides the descriptions of basic functions.

For detailed operation and more other functions, please refer to the boot guide and electronic manual.

Important Safety Instructions part A

- While projecting, please do not look at the lens directly, or it may hurt your eyes.
- Always leave a minimum distance of 20 cm around the unit to ensure sufficient ventilation.
- General normal using conditions of the projector:
Temperature range: 5 ~ 35 C (tropical 45°C)
Operating humidity: 20%RH ~ 80%RH
Atmospheric pressure: 86Kpa ~ 106Kpa
- Do not place the device in a over hot or cold area, bringing from the cold area to the indoor have to stand till 24h to return the normal temperature before turning on the power.
- The ventilation should not be impeded by covering the ventilation openings with items, such as newspapers, table-cloths, curtains, etc.
- Do not place the projector near the heat source, exposed to direct sunlight or moisture environment.
- Do not use paper/cloth etc. to clean the lens to avoid scratching the lens. Use a cleaning air blow to remove dust on the surface of the lens.
- Do not use chemicals, cleaning agents or clean water to clean the device. The apparatus shall not be exposed to dripping or splashing of water or liquids and that no objects filled with liquids such as flows vases shall be placed on the projector.
- The AC power plug is the device to disconnect the projector from the power. Please do not block and keep the plug easy to operate.
- For the Class I Structure (three-core power supply), the device should be connected to the output socket of the grid power supply with the protective ground connection to avoid the risk of electric shock.
- Please place the projector and its components out of the reach of children to prevent injury and accidental swallowing.
- Do not allow children to play with the AC power adapter and connect the power.

Important Safety Instructions part B

- Do not wrap the power cord around its adapter or other objects, as this will tighten the cord to cause the cord to fray, break or bend, which may cause safety hazards.
- If the body has a lithium battery, the maintenance worker should pay attention to:
When replace the battery, please make sure that it is the same type and equivalent battery to avoid explosion hazard caused by improper replacement.
- Batteries(batteries including assembled batteries) can not be exposed to overheating environments such as sunlight, fire, etc.
- To avoid battery leakage corrosion, if do not use remote control for a long time, please take the battery out. Do not mix different types of batteries (such as alkaline batteries and cellphone batteries), or mix old and new batteries. Improper use may cause explosion hazard.
- Do not subject the remote control to severe vibration or splashing with liquids, and do not place the remote control in the area with high humidity.
- Discarded batteries will have a negative impact on the environment. Please abide by the relevant environmental protection regulations and place the discarded batteries in the designated recycling area.

This equipment complies with radiation exposure limits set forth for an uncontrolled environment. This transmitter must not be co-located or operating in conjunction with any other antenna or transmitter. This equipment should be installed and operated with minimum distance 20cm between the radiator& your body.

U.S. FCC Part 15 Regulatory Information

This device complies with part 15 of the FCC Rules. Operation is subject to the following two conditions: (1) this device may not cause harmful interference, and (2) this device must accept any interference received, including interference that may cause undesired operation.

Any Changes or modifications not expressly approved by the party responsible for compliance could void the user's authority to operate the equipment.

Note: This equipment has been tested and found to comply with the limits for a Class B digital device, pursuant to part 15 of the FCC Rules. These limits are designed to provide reasonable protection against harmful interference in a residential installation. This equipment generates, uses and can radiate radio frequency energy and, if not installed and used in accordance with the instructions, may cause harmful interference to radio communications. However, there is no guarantee that interference will not occur in a particular installation. If this equipment does cause harmful interference to radio or television reception, which can be determined by turning the equipment off and on, the user is encouraged to try to correct the interference by one or more of the following measures:

- Reorient or relocate the receiving antenna.
- Increase the separation between the equipment and receiver.
- Connect the equipment into an outlet on a circuit different from that to which the receiver is connected.
- Consult the dealer or an experienced radio/TV technician for help.

ISED Warning

Operation of 5150-5250 MHz is restricted to indoor use only.

This device complies with Innovation, Science, and Economic Development Canada licence-exempt RSS standard(s). Operation is subject to the following two conditions:

- (1) this device may not cause interference, and
- (2) this device must accept any interference, including interference that may cause undesired operation of the device.

Le fonctionnement de 5150-5250 MHz est limité à une utilisation en intérieur uniquement.

Le présent appareil est conforme aux CNR d'Innovation, Sciences et Développement économique Canada applicables aux appareils radio exempts de licence.

L'exploitation est autorisée aux deux conditions suivantes :

- (1) l'appareil ne doit pas produire de brouillage, et
- (2) l'utilisateur de l'appareil doit accepter tout brouillage radioélectrique subi, même si le brouillage est susceptible d'en compromettre le fonctionnement.

The device is compliance with RF exposure guidelines, users can obtain Canadian information on RF exposure and compliance. The minimum distance from body to use the device is 20cm.

Le présent appareil est conforme. Après examen de ce matériel aux conformités ou aux limites d'intensité de champ RF, les utilisateurs peuvent sur l'exposition aux radiofréquences et la conformité and compliance d'acquérir les informations correspondantes. La distance minimale du corps à utiliser le dispositif est de 20cm.

Industry Canada ICES-003 Compliance: CAN ICES-3 (B)/NMB-3(B)

CE Conformity for European Countries

CE The device complies with the EMC Directive 2014/30/EU and Low Voltage Directive 2014/35/EU

Declaration of RoHS2 Compliance

This product has been designed and manufactured in compliance with Directive 2011/65/EU of the European Parliament and the Council on restriction of the use of certain hazardous substances in electrical and electronic equipment (RoHS2 Directive) and is deemed to comply with the maximum concentration values issued by the European Technical Adaptation Committee (TAC)

Safety and Environment Protection


The name and quantity of hazardous substances:

Part name	Hazardous substances					
	Pb	Hg	Cd	Cr(VI)	PBB	PBDE
Plastic (material) parts	○	○	○	○	○	×
Optical engine	○	○	○	○	○	○
Circuit board assembly	○	○	○	○	○	○
Power adapter	○	○	○	○	○	○
Remote controller	○	○	○	○	○	○
Wire rod	○	○	○	○	○	○

This form is compiled in accordance with the regulations of SJ/T 11364.

○:Indicates that the content of the hazardous substance in all materials of the part is below the limit requirement specified in GB/T26572.

×:Indicates that the content of the hazardous substance in at least a certain homogeneous material of the part exceeds the limit requirement specified in GB/T 26572.



This electrical and electronic product contains certain hazardous substances. so it can be used with confidence during the environmental protection use period.After the environmental protection use period is exceeded it should enter the recycling system.

Recycling tips

In order to better care and protect our earth,when you no longer need this product or its life ends please follow the national laws and regulations related to the recycling of waste electrical and electronic products,and hand it over to your local manufacturer who has the qualifications of the national recognized and disposal.

ViewComm

Shenzhen ViewComm Technology Co.,Ltd.

RM 605, BLDG 4, Private Enterprise Science Park, No.65 Lishan Rd,
Nanshan Dist, Shenzhen ,China

Contact us:service@viewcomm.com Official Website: www.viewcomm.com
Manufacturer: Anhui YOUPIN Intelligent Technology Co., Ltd.