

S2, S3

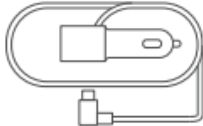
1. What's in the box?



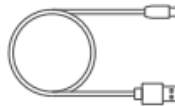
A. Vantrue S2 Dash Cam



B. GPS Adhesive Mount



C. Car Charger with Built-in Type C Cable(11.5ft)



D. Type C Data Cable (3.3ft, for transferring files only)



E. Electrostatic sticker



F. Warning Sticker



G. User Manual

Optional Accessories



I. RC02 Rear Camera

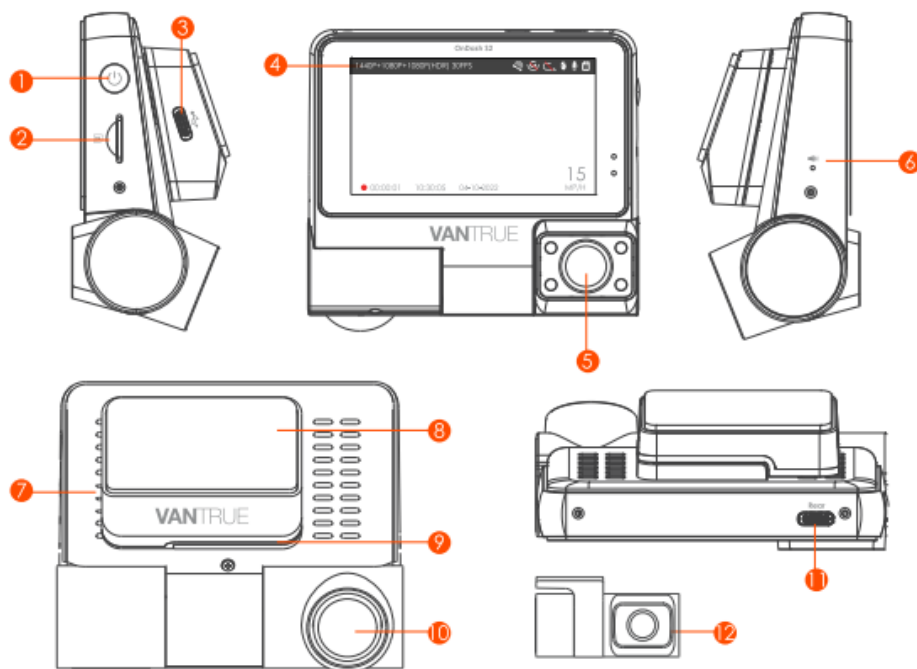


J. Type C Cable for Rear Camera(20ft)



K. Adhesive Sticker

2. Camera Overview



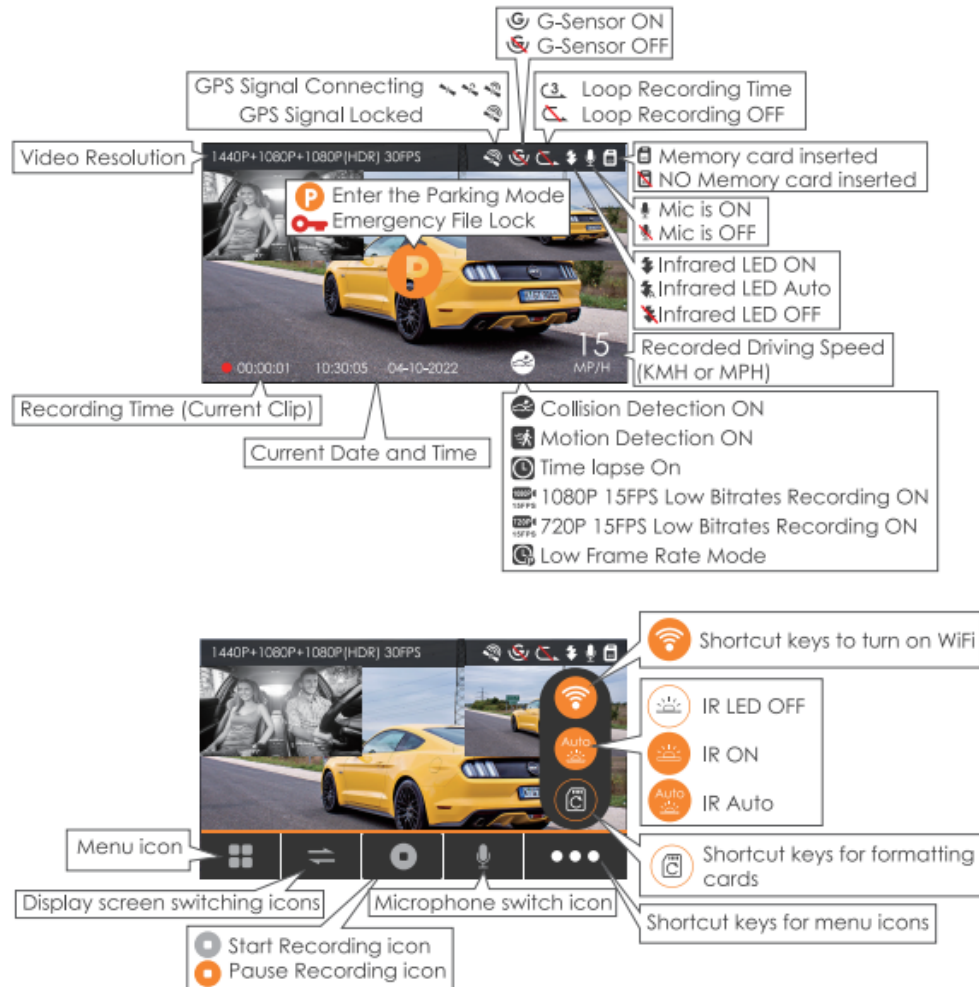
NO.	Name	Description
1	Power Button	Power ON/OFF; Long press to turn on/off the dash cam; short press during recording to enter event recording mode; short press to capture pictures during event recording.
2	SD Card Slot	Position for installing the memory card. Support Micro SD Card up to 512GB in FAT32, Class 10.

3	Power Port	Connect to Type C cable or car charger for external power supply.
4	Screen	3" LCD Display Screen.
5	Cabin Camera	Cabin camera for in-car video recording.
6	Microphone	Record clear audio with the video footage.
7	Speaker Record	Delivers sound during video playback.
8	GPS Mount	Fix the camera; Receive GPS signals.
9	Serial Number	Serial Number for Warranty Registration.
10	Front Camera	Record road events in front of the car.
11	Type C Port for Rear Camera	Connect the Rear Camera into this Port; connect the data cable for data transferring.
12	Rear Camera (Optional)	Record road events behind the car.

Note: The Vantrue S2 dash cam does not have a "reset" button. If the camera gets stuck or doesn't respond, you can quickly restart the camera by simply unplugging and replugging the power cord.

LED	LED Status	Description
REC	Solid Red	WiFi is connected.
	Flashing Red	WiFi is not connected.
WiFi	Solid Blue	In the standby status.
	Flashing Blue	Camera is recording.

Screen Overview

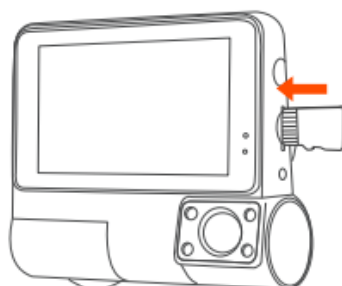



3. Installation

3.1 Installing a Memory Card (Recommend Vantrue U3 high-speed microSD card).

Please insert a memory card (memory card capacity: 32GB-512GB, card speed: U3/Class10/A2), because the dashcam has certain requirements on the card speed of the memory card. For reliable operation, we recommend using VANTRUE SD card(sold separately).

Memory Card Installation: There is an icon indicating the insertion direction of the memory card. Please push the memory card into the card slot according to the direction indicated by the icon, until a "click" sound is heard in the card slot, indicating that the memory card is inserted properly



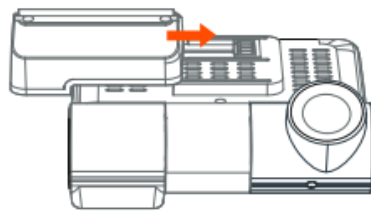
Before using this card, please follow the steps below to format it properly: If the camera is recording, please click the  icon to pause the recording, then click the  icon to select the format card , and confirm to format the memory card until it prompts "Formatted successfully". If it prompts "Card error, please format" after you insert the memory card, you can directly click the  icon to enter the menu setting and start the formatting process.

REMINDER:

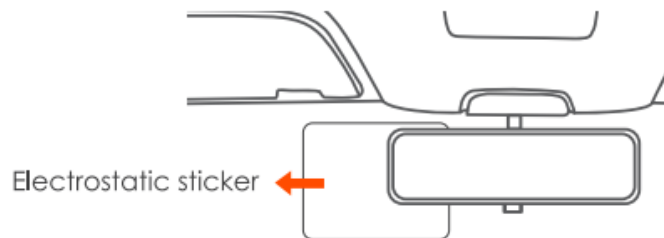
1. We recommend formatting the card once a month to ensure the normal use of the dash cam.
2. Do not remove or insert the memory card during recording to avoid losing important videos.
3. Please do not use bad cards or low-speed cards on the dash cam, as it is easy to stop or lose the recording due to the failure of the memory card.

3.2 Installing the camera**Steps 1 Camera Installation**

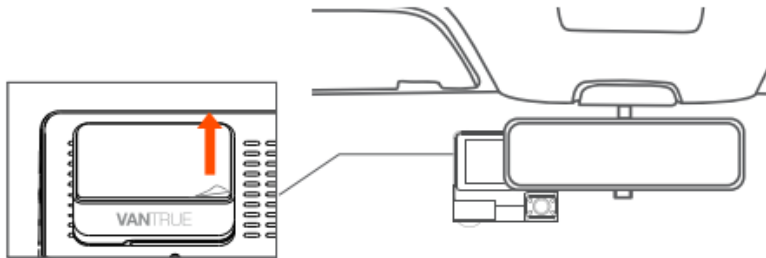
1. Slide the GPS mount horizontally into the slot of the back of the camera.



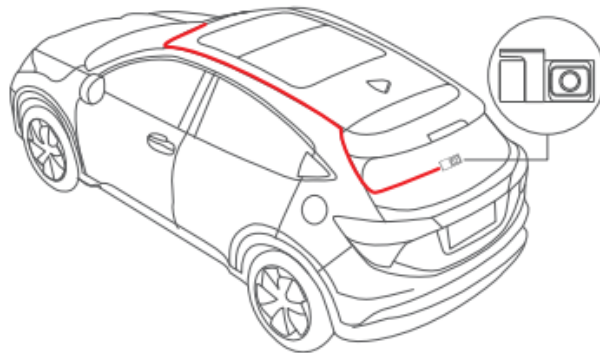
2. Thoroughly clean the windshield with water or alcohol, then wipe it with a dry cloth. Attach the electrostatic sticker on the windshield.



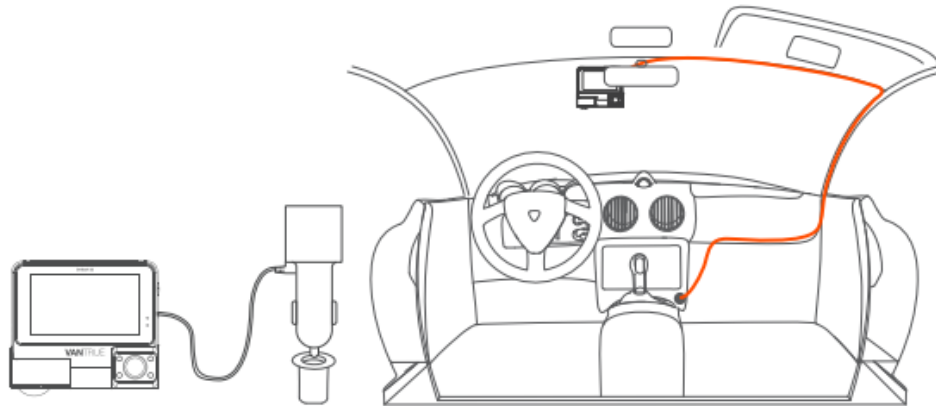
3. Remove the 3M tape and stick the Front Dash cam behind rear view mirror, which is the recommended position to prevent blocking our view while driving, then fix the front camera on the electrostatic sticker.



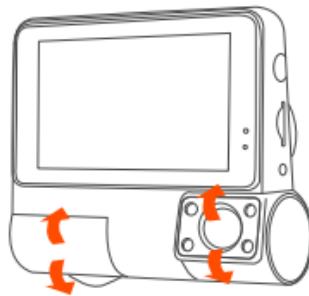
4. **Rear Camera Installation (Optional):** Please select the installation position on the rear windshield. We recommend that you select a position close to the center of the rear windshield, and avoid the defogging line on the rear windshield, so as not to affect the video effect. Remove the protection film of the sticky pad and rear camera lens. Fix the rear camera in the selected position and adjust the lens, then use the rear camera cable to connect the rear camera with the main front camera.



5. Connect one end of the car charger to the car cigarette lighter, then connect the other end of to the Type C port on GPS mount of the front camera.



6. After the camera is turned on, you can adjust the lens angle of front, cabin and rear camera
- Look at the live view on the LCD screen.
 - Adjust the angle of the lens up/down if necessary



Steps 2 APP Download

Please scan the relevant version QR code below to download the APP and install it.

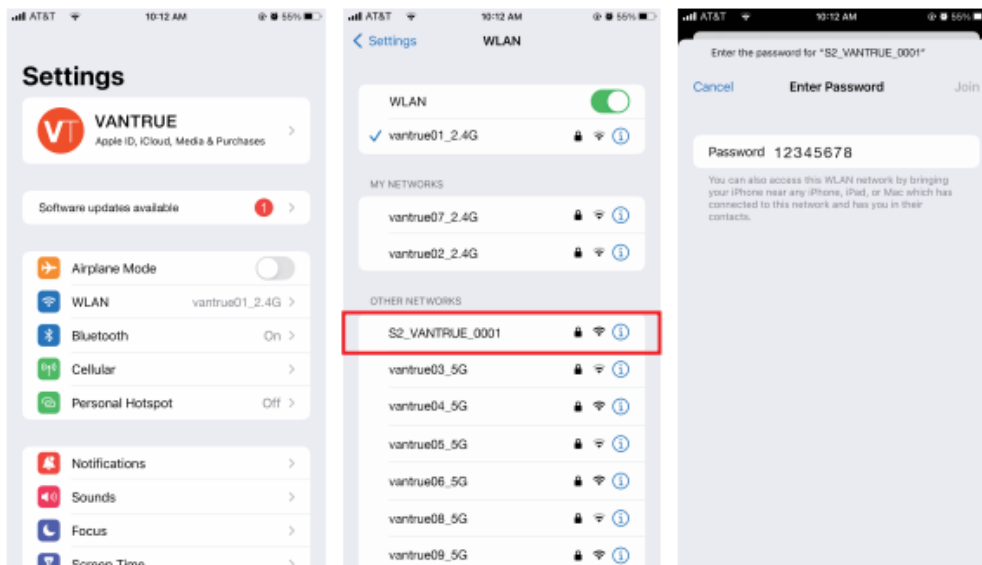
Search for "Vantrue Cam" APP in App Store or Google Play Store to find the App and then download and install it on your phone.



Note: After this camera is successfully connected to the mobile phone through WiFi, it can realize real-time video preview, change recorder settings, download files without Internet connection, and play back videos on the mobile phone. However, the GPS track playback and video sharing functions will depend on the Internet or telecom value-added services (requires you to turn off/disconnect the camera WiFi).

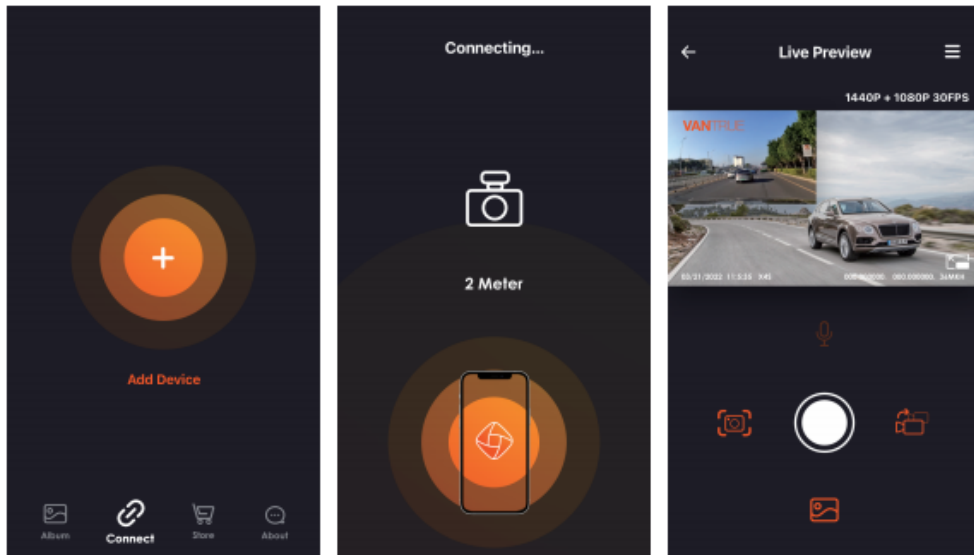
Steps 3 WiFi Connection

Turn on the WiFi function of the camera, enter the WiFi settings of the mobile phone, and then find the WiFi name such as: S2_VANTRUE_XXXX, and enter the WiFi default password: 12345678 to connect to WiFi.



Steps 4 APP Connection

After the WiFi connection is successful, click "+" when opening the APP for the first time, add the camera model, and then the APP will automatically connect to the camera and display the current real-time recording situation of the camera.



Note:

1. If you do not connect to WiFi before opening the APP, the APP will prompt you "Please connect to WiFi first", and will automatically jump to the WiFi settings, please complete the steps to connect to WiFi first.
2. If the WiFi is already connected, but the APP jumps to the application permission of the APP after selecting the model, please check whether the wireless network permission of the APP is turned on.

3. The initial password of this device is only used for initial login. In order to prevent potential security risks, please be sure to change the initial password in time after the initial login to prevent others from logging into your device without authorization or other adverse consequences.
4. If you forget the WiFi password, you can restore the default setting of the device, and the Wi-Fi password of the device will also be restored to the default password(12345678).
5. If the connected WiFi name does not match your dash cam model, the APP will prompt "Please select the correct model" and automatically jump back to the model selection interface.

Steps 5 APP Operation



Video preview: After the APP is successfully connected to the camera, enter the real-time preview page, click the icon or place the phone horizontally, and the real-time screen will automatically switch to the full-screen preview mode. Click the icon to switch the front and rear video windows.

Video playback: The video and photo files recorded on the SD card can be viewed in the APP, and the video can be played back after clicking the file.

Video download: You can select the video or picture you want to download in the SD card browsing interface or in the video playback. After downloading the video, if you play it in the local file of the App, you can view the GPS track of the video.

Video snapshot: You can capture the current screen in the real-time preview interface of the app.


Steps 6 APP Upgrade



Open the "Vantrue Cam" App, connect to the Wi-Fi, and enter "Settings> About> Detect New Version", the App will automatically detect whether the App version is the latest version. If there is a new version of the App, follow the App prompts and upgrade the version.

4. Basic Operation

4.1 Menu Settings

The Vantrue S2 dash cam has 3 function menus, which are record settings, system settings and file browsing. You can set your dash cam according to your requirements in this function setting.

After powering ON the camera, click the  icon to enter the setup process.

(If the camera is recording video, click the  icon to stop recording before click the  icon.)



A. Record Setup

-Resolution:

Front + Cabin + Rear Recording Mode: 1440P+1080P+1080P (HDR) 30FPS (Default); 1080P+1080P+1080P (HDR) 30FPS; 720P+720P+720P (HDR) 30FPS; 1440P+1080P+1080P 30FPS; 1080P+1080P+1080P 30FPS; 720P+720P+720P 30FPS (Please note that this three-way recording mode must be connected to the rear camera which needs to be purchased separately. The three-way menu will be automatically displayed only after connecting the rear camera.

Front + Cabin Recording Mode: 1440P+ 1080P 30FPS; 1080P+ 1080P 30FPS; 1080P+720P 30FPS; 720P+1080P 30FPS; 720P+720P 30FPS.

Single Front Recording Mode: 2560x1440P 30FPS; 1920x1080P 30FPS; 1280x720P 30FPS.

-**Loop Recording:** Default setting is 3 min. You can choose the options

from 1/2/3/4/5 min and OFF.

-IR LED: Default setting is ON, you can choose to turn on/off the infrared light.

-REC Status Light: Default setting is ON, you can choose to turn on/off the REC Status Light.

-G-Sensor: Select the level of G-sensor you need, and you can set 3 directions (Front & Back/Left & Right/Up & Down). The G-sensor value in each direction can be selected as 1/2/3/4/5/Off. The higher the sensitivity level, the easier it is to trigger emergency recording. G-sensor is the most sensitive when set to 5.

-Audio Recording: The default is ON, you can set the recording ON /OFF.

-Parking Mode: You can swipe up and down the screen to select the parking mode you need, including Collision Detection/ Motion Detection/ Low Bitrates Recording/ Low Frame Rate Mode / OFF.

-Exposure: The default value is +0.0. This option can adjust the exposure level of the front, cabin and rear camera separately.

Front: +2.0, +1.6, +1.3, +1.0, +0.6, +0.3, +0.0, -0.3, -0.6, -1.0, -1.3, -1.6, -2.0

Cabin: +2.0, +1.6, +1.3, +1.0, +0.6, +0.3, +0.0, -0.3, -0.6, -1.0, -1.3, -1.6, -2.0

Rear: +2.0, +1.6, +1.3, +1.0, +0.6, +0.3, +0.0, -0.3, -0.6, -1.0, -1.3, -1.6, -2.0

-Number Plate: After setting, your license plate number can be displayed in the recorded video.

-Stamp: Enable or disable the watermark stamp of the video and photos. The watermark stamp includes date and time label, VANTRUE label, license plate number, GPS location information, speed label. All enabled by default.

-Rotate Display: Default is off. You can choose the upside-down display of the front + cabin screen, or the upside-down display of the rear camera. If turned on, the video screen will be reversed 180 degree.

-Time Lapse: The default value is disabled. You can choose to enable 1FPS/5FPS/10FPS/15FPS.

-GPS Setting: GPS is enabled by default. This option can set GPS on and

off, speed unit Settings, GPS information.

B. System Setup

-Language: Available languages are English/ Français/ Español/ Deutsch/ Italiano/简体中文/русский/ 日本語/ Polski.

-WiFi: The default setting is Off. After WiFi is enabled, mobile phones can connect to WiFi and operate the dash cam through mobile phones.

-Format memory Card: Format all data on the memory card

-Format Reminder Setup: Select the reminder options: 15 Days, 1 Month, and Off. Default is off.

To prevent you from forgetting to format the memory card regularly, we have added a format reminder time setting. You can choose to be reminded after 15 days or 1 month, and calculate 15 days or 1 month from the set date. When the time is up, you can choose "OK" to format, or choose "Next".

Note: If you changing the format reminder option, the timing will restart as soon as the option is changed.

-Date & Time: There are two ways to set the time and date: 1. GPS automatic update; 2 Manual date/time setting. GPS automatic update is enabled by default.

GPS automatically updates the date and time based on your time zone, so you need to select the correct time zone first; you can also choose to turn off GPS automatic update, turn on Manual date/time setting, and manually correct date and time.

-Auto LCD Off: Set the time to automatically turn off the LCD display after no operation.

If you set the Auto LCD Off to 3 min, the camera's LCD screen will auto light off after 3 min but recording will continue. If the setup is Off, the screen will not turn off. Swipe up and down the screen to tap the option you want: 1Min, 3Min, 5Min and OFF.

-Device Sound: Set the volume of the device. The default volume level is 3, the lowest is 0, and the highest is 5.

-Prompt Tone: According to different situations, the dash cam is set with 5 kinds of prompt tones, which are power-on/off sound, button tone, lock tone, formatting tone, and abnormal recording tone. All prompt tones are turned on by default.

-Frequency: Different countries have different frequency, in order to avoid affecting the video, you can choose 50Hz or 60Hz frequency according to different regions.

-System Info: Check the current model, firmware version and Vantrue official website.

-Default Setting: Reset the device back to factory settings.

C. Files

Review and delete videos stored in file folders.

-Event: Critical event videos detected by G-Sensor activity or manually locked by user.

The file name format is 20210128_140633_0008_E_A.MP4

-Normal: Standard videos recorded. This folder saves loop recording video, parking mode video, and time-lapse video. The file name format of Loop Recording video is 20210128_140633_0008_N_A.MP4; the file name format of Parking Mode video is 20210128_140633_0007_P_A.MP4; the file name format of Time-Lapse video is 20210128_140633_0006_T_A.MP4.

-Photo: Snapshot file.

-All: All the standard videos and critical event videos were recorded.

Note: The suffix A represents the files recorded by the front camera, the suffix B represents the files recorded by the cabin camera, and the suffix C represents the files recorded by the rear camera. Standard files are stored in the "Normal" folder.

4.2. Main Functions

4.2.1 Switch the Front, cabin and rear camera window display

In three way or two-way recording mode, you can click the ⇄ icon to switch display so front/cabin/rear camera shows bigger on the LCD.



Front+Cabin+Rear
Picture-in-Picture



Single Front Recording Display



Single Cabin Recording Display



Single Rear Recording Display

4.2.2 Loop Recording

After inserting the memory card and connecting the power, the S2 dash cam will auto turn on and enter loop recording. The duration of each recorded video will be saved based on the loop recording time you set, saved in the normal video folder.

When the capacity of the normal video folder reaches 80% of the total



capacity, the new loop recording file will automatically overwrite the original loop recording file. After this function is enabled, the video file will automatically overwrite the loop, so as not to stop recording in the driving process.

Note:

1. The normal operation of the loop recording function is very dependent on the speed of the memory card, so please format the memory card regularly to avoid problems such as excessive memory card files and card aging that affect the normal loop recording.
2. Please check the loop recording video regularly to avoid the necessary video being overwritten by loop.
3. After loop recording is turned off, the lock recording function will no longer work.
4. After the loop recording is turned off, the duration of each video will be 5 minutes, and the recording will stop when the memory card capacity is full.

4.2.3 Event Recording

The event video is triggered by the G-sensor(Gravity Sensor), which can be automatically triggered or manually locked.

To manually lock the video, just short press the  Button to lock the current video(A key icon  will appear at the center of the screen), and it will be automatically saved in the event video folder after the video is finished. Automatic locking event video is triggered when the car is hit/shaken, the dash cam detects the vibration and automatically locks the current video(If the current recording is 1 minute, the 1-minute video will be locked), which is saved in the event video folder.



Note:


1. The sensitivity of the automatic locking video trigger is determined by the sensitivity of the collision. The higher the sensitivity setting, the greater the probability of being triggered.
2. The total capacity of the event video file accounts for 20% of the total capacity of the current memory card. When the event video file reaches the upper limit, the new event video file will automatically overwrite the original event video file. It is recommended to periodically check and save your event video files to avoid loss.
3. Lock recording will not trigger in either of the following situations: Turn off loop recording or turn on time-lapse recording.

4.2.4 Parking Mode (When the parking mode is turned on, the time-lapse video function will not work. These two functions cannot run at the same time)


Parking Mode operates as a sentry function under different situations. You can switch to different parking modes according to different parking situations.

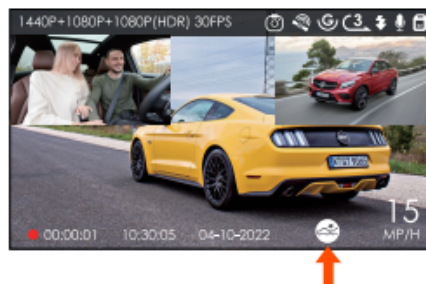
Note:


1. To ensure the camera works properly in park mode, please use the hardwire kits or other stable and continuous power supply to power the dash cam.

2. Collision Detection mode is recommended for high temperature in summer. When the temperature inside the car is as high as 60°C(140°F), it is recommended that you turn off the camera to avoid abnormal operation of the camera caused by the high temperature.
3. Parking mode (including collision detection, motion detection, low bit rate recording, and low frame rate mode) and Time-lapse recording can only be enabled for one of them. When one is enabled, the other will be automatically disabled.
4. After the parking mode is turned on, you can wait for 5 minutes to enter automatically, or click the  icon to enter manually.

A. Collision Detection

When collision detection is enabled, the  icon will be displayed on the recording interface, indicating that the camera is currently using collision detection mode. Collision detection sensitivity can be adjusted from 1 to 5 level, you can adjust according to your usage habit, as well as the surroundings of the car.



When the Collision Detection is turned on, and no movement is detected after 5 minutes of recording (5-minute entry mechanism for short), then Collision Detection is activated with a  icon appearing in the center of


the screen, and the camera automatically turn off. When the dash cam is turned off, it will start to record for 1 minute after being shaken, and then turn off the dash cam again.

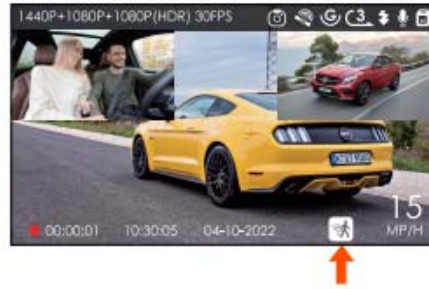


Note:

1. If the dash cam continues to be hit during the collision detection recording, it will exit the collision detection mode and enter the normal recording, restarting the 5-minute entry mechanism.
2. The collision detection video will be saved in the Normal folder. In order to prevent the video from being looped, please check it in time and save the required collision detection file to prevent loss.

B. Motion Detection

When the motion detection is turned on, the  icon will be displayed on the recording interface, indicating that the dash cam is currently in motion detection mode. Motion detection has three levels of low/medium/high that can be adjusted, and the corresponding detection range of motion detection is 6.6ft/13ft/19.7ft.



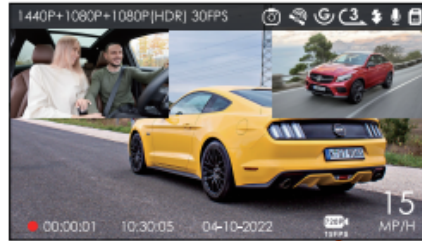
When the motion Detection was turned on, and no movement is detected after 5 minutes of recording, then an orange **P** icon will appear in the center of the screen. The dashcam enters the standby mode, and the screen turns off after 30 seconds. When the dash cam (any camera in front / inside/rear of the car) detects the movement of the object, it will auto start recording for 30 seconds and save the recording in the Normal folder.



Note: Motion detection mode requires the camera to be turned on. Once the camera is turned off, the motion detection mode will not work.

C.Low Bitrate Recording

When Low Bitrate recording is enabled, the 720P 15FPS or 1080P 15FPS icon will be displayed on the screen, depending on whether you choose 1080P 15FPS or 720P 15FPS.



After parking, if no movement is detected after 5 minutes of recording, there will be an orange **P** icon that appears in the center of the screen which means Low Bitrates recording is activated. The current resolution of all camera will be automatically switched to 1080P 15FPS or 720P 15FPS for recording, and the recording duration is determined by the currently set loop recording. When the camera is vibrated or moved, it will automatically exit, wait five minutes and enter again.

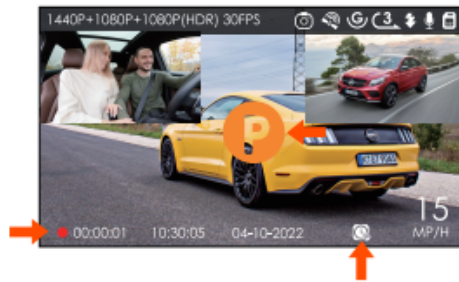


Note: Low Bitrate Recording mode requires the camera to be turned on. Once the camera is turned off, the Low Bitrate Recording mode will not work.

D.Low Frame Rate mode

If Low Frame Rate mode is selected, the 5-minute entry mechanism will be enabled on the dash cam after the car is stopped, and the low frame rate mode will enter automatically.

For example, if you select 1FPS and the current video resolution frame rate is 30FPS, the recorder will generate a 30FPS video per second. Low frame rate mode can greatly preserve the integrity of the video and save space on the memory card.

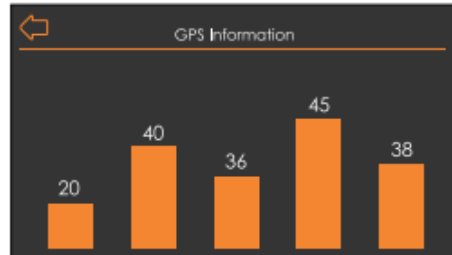


Note:

1. The time unit of the calculation formula is seconds, so the final normal recording time calculated is also seconds. If you need to convert it into other time units, please check and convert by yourself.
2. [Normal Recording Time = Time Lapse Recording Time (Sec) x Recording Frame Rate FPS x Time Lapse Option]
3. In low frame rate mode, the camera also requires a stable power supply. Once the power is turned off or drained, the camera will shut down.

4.2.5 GPS Function

The GPS function is also one of the important functions of the dash cam. GPS is enabled by default, and the camera receives GPS signals through the GPS mount. It can automatically correct the time and date in your area, recording the location where the video was recorded and the speed of the car at the time.



GPS information will be recorded in the recorded video in the form of video watermark. The GPS watermark is enabled by default. If you find that there is no GPS watermark in your recorded video, you can first check whether the watermark has been turned on or whether the GPS mount has been successfully connected. If you have other questions, please contact our customer service team in time, we will be happy to solve the problem for you.

Note:

1. The GPS connection will be completed within 1 minute after you turn on the device. If the GPS connection is not successful within 1 minute, please check whether the DEVICE has turned on the GPS function, whether the GPS bracket is properly connected, and your environment (underground parking lot, densely populated residential area, subway, tunnel, etc.) will also affect the reception of GPS signal.

2. GPS information is recorded in the video you recorded. To view it, please download and install VANTRUE Cam APP and VANTRUE GPS Player (available for download on www.vantrue.net).

4.2.6 Viewing Video/Photos

a. Viewing files on the Camera

After clicking to enter the file, enter any folder, and after opening the video file, you can choose to play at double speed and delete the file.



b. Viewing files on a Computer

1. Connect the camera to your computer using the supplied Type C Data cable.
2. After the connection is successful, "USB Connecting" will appear on the display of the camera to transfer data, and then you can view the video files in the computer folder.

3. Depending on the computer system of different users, after the camera is connected to the computer, it will be displayed as a removable drive or a removable folder in the computer.
4. To view the file on the computer, you can directly right-click to open the menu and delete it.
5. You can also use a USB card reader to read the memory card information.

Note: Standard camera settings and operations will be disabled when the camera is connected to your computer in the "USB Connecting" state.

c.View on "Vantrue Cam" APP

After the camera is successfully connected to the mobile phone through WiFi, it can play back, download and delete files in the mobile APP. To play back files in the APP, you can choose to playback the files in the SD card, or download the files to the local and play them back.

Note:

1. Video playback in APP, or download to SD card, there will be no data traffic consumption.
2. You can view GPS track information only after the video file is downloaded and played back locally. At the same time, you need to disconnect the WIFI of the dash cam, otherwise the map information will be blank.

4.2.7 Upgrading the Firmware

The system will automatically update if the micro SD card contains the firmware upgrade file. The camera will restart once the upgrade has been completed.

The latest firmware version is always available at the official VANTRUE website (www.vantrue.net). We strongly recommend registering your product (www.vantrue.net/register) to receive a notification email when a new firmware update is available.

4.2.8 Working Temperature

The camera is designed to operate in temperatures from 14 to 140°F (-10 to 60°C), temperatures outside this range risk degrading the camera's performance work and causing damage.

To avoid damage

When parking for a long time in a hot and high temperature environment, please use the collision detection mode or suspend the use of the recorder.

In an extremely cold environment, the activity of the battery of the camera will decrease. If the camera is not used for a long time, please remove the camera and place it in the armrest box to ensure the normal use of the recorder.

5. Specification

Model	S2, S3
Screen	3" IPS Touchscreen LCD Screen
WiFi	Built-in WiFi (2.4G)
Lens	Front: 160°wide viewing angle; F/1.4 wide aperture Inside: 165°wide viewing angle; F/2.0 wide aperture Rear: 160°wide viewing angle; F/2.0 wide aperture (Optional)
Languages	English/ Français/ Español/ Deutsch/ Italiano/ 简体中文/русский/日本語/ Polski
Video Resolution	Front + Cabin + Rear Recording Mode: 1440P+1080P+1080P(HDR) 30FPS(Default); 1080P+1080P+1080P(HDR) 30FPS; 720P+720P+720P(HDR) 30FPS; 1440P+1080P+1080P 30FPS; 1080P+1080P+1080P 30FPS; 720P+720P+720P 30FPS Front + Cabin Recording Mode: 1440P+1080P 30FPS(Default); 1080P+1080P 30FPS; 1080P+720P 30FPS; 720P+1080P 30FPS; 720P+720P 30FPS Single Recording Mode: 2560x1440P 30FPS; 1920x1080P 30FPS; 1280x720P 30FPS
Audio	Built in Microphone and speaker
Memory Storage	External: 32GB-512GB Micro SD Card, Class 10 (not included in the box)
Power Source	Built in super capacitor
Video File Format	MP4

Supply voltage current	DC 5V 2A
Operating voltage current	DC 5V 800mA
Working Temperature	14°F to 140°F(-10°C to 60°C)
Supply voltage current	-4°F to 158°F(-20°C to 70°C)
USB Port	Type C

6. Warranty & Support

Warranty

The VANTRUE® S2 Dash Cam comes with a full 12 months warranty. If you register your product on our official site (www.vantrue.net/register), you can extend the warranty to 18 months.

Support new

If you have any questions regarding your product, please do not hesitate to contact us at support@vantrue.net, or drop us a message through the live chat box at www.vantrue.net.

Queries are typically answered within 12-24hours.

Your opinion matters

VANTRUE® is firmly committed to always improving our products, services, and user experience. If you have any thoughts on how we can do even better, we welcome your constructive feedback and suggestions. Connect with us today at support@vantrue.net.

FCC WARNING

This device complies with part 15 of the FCC Rules. Operation is subject to the following two conditions: (1) this device may not cause harmful interference, and (2) this device must accept any interference received, including interference that may cause undesired operation.

Any changes or modifications not expressly approved by the party responsible for compliance could void the user's authority to operate the equipment.

NOTE: This equipment has been tested and found to comply with the limits for a Class B digital device, pursuant to Part 15 of the FCC Rules. These limits are designed to provide reasonable protection against harmful interference in a residential installation. This equipment generates, uses and can radiate radio frequency energy and, if not installed and used in accordance with the instructions, may cause harmful interference to radio communications. However, there is no guarantee that interference will not occur in a particular installation.

If this equipment does cause harmful interference to radio or television reception, which can be determined by turning the equipment off and on, the user is encouraged to try to correct the interference by one or more of the following measures:

- Reorient or relocate the receiving antenna.
- Increase the separation between the equipment and receiver.
- Connect the equipment into an outlet on a circuit different from that to which the receiver is connected.
- Consult the dealer or an experienced radio/TV technician for help.

To maintain compliance with FCC's RF Exposure guidelines, This equipment should be installed and operated with minimum distance between 20cm the radiator your body: Use only the supplied antenna.

IC Caution:

RSS-Gen Issue 5 2021"&"CNR-Gen 5 2021:

- English:

This device complies with Industry Canada licence-exempt RSS standard(s).

Operation is subject to the following two conditions: (1) This device may not cause interference, and (2) This device must accept any interference, including interference that may cause undesired operation of the device.

The device should be installed and used within a distance of at least 20 cm between the radiator and the body.

- French:

Le présent appareil est conforme aux CNR d' Industrie Canada applicables aux appareils radio exempts de licence. L'exploitation est autorisée aux deux conditions suivantes:

(1) l'appareil ne doit pas produire de brouillage, et

(2) l'utilisateur de l'appareil doit accepter tout brouillage radioélectrique subi, même si le brouillage est susceptible d'en compromettre le fonctionnement.

Cet appareil numérique de la classe B est conforme à la norme NMB-003 du Canada.

Déclaration d'exposition aux radiations Cet équipement est conforme Canada

limites d'exposition aux radiations dans un environnement non contrôlé. Cet équipement doit être installé et utilisé à distance minimum de 20cm entre le radiateur et votre corps.