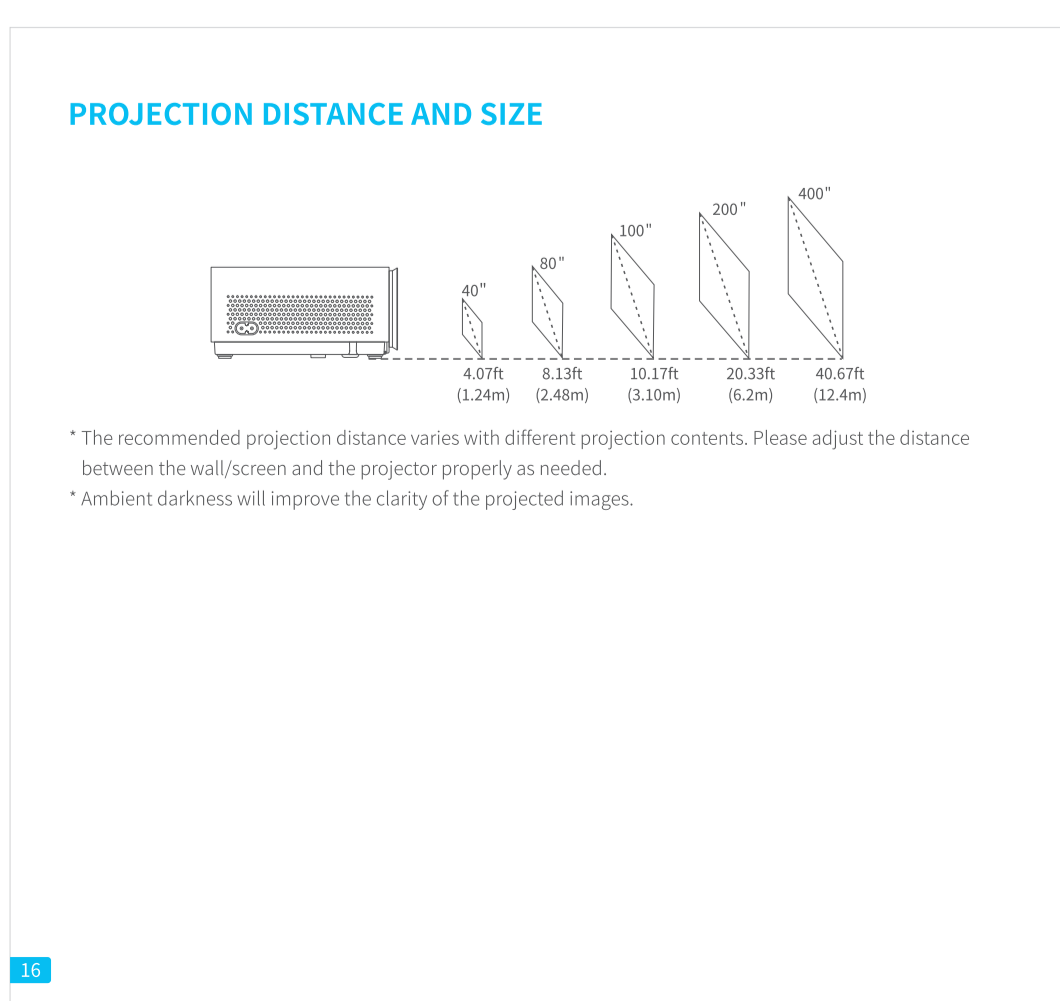
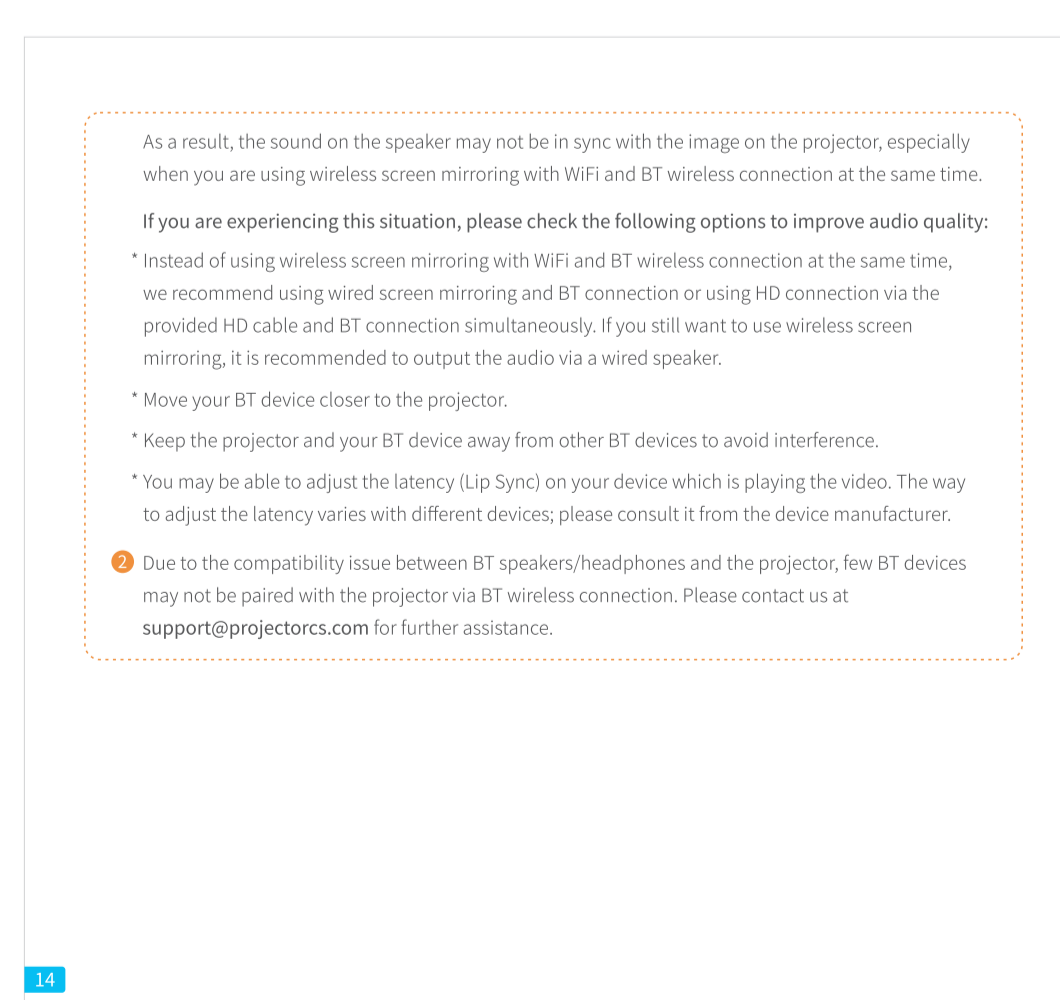
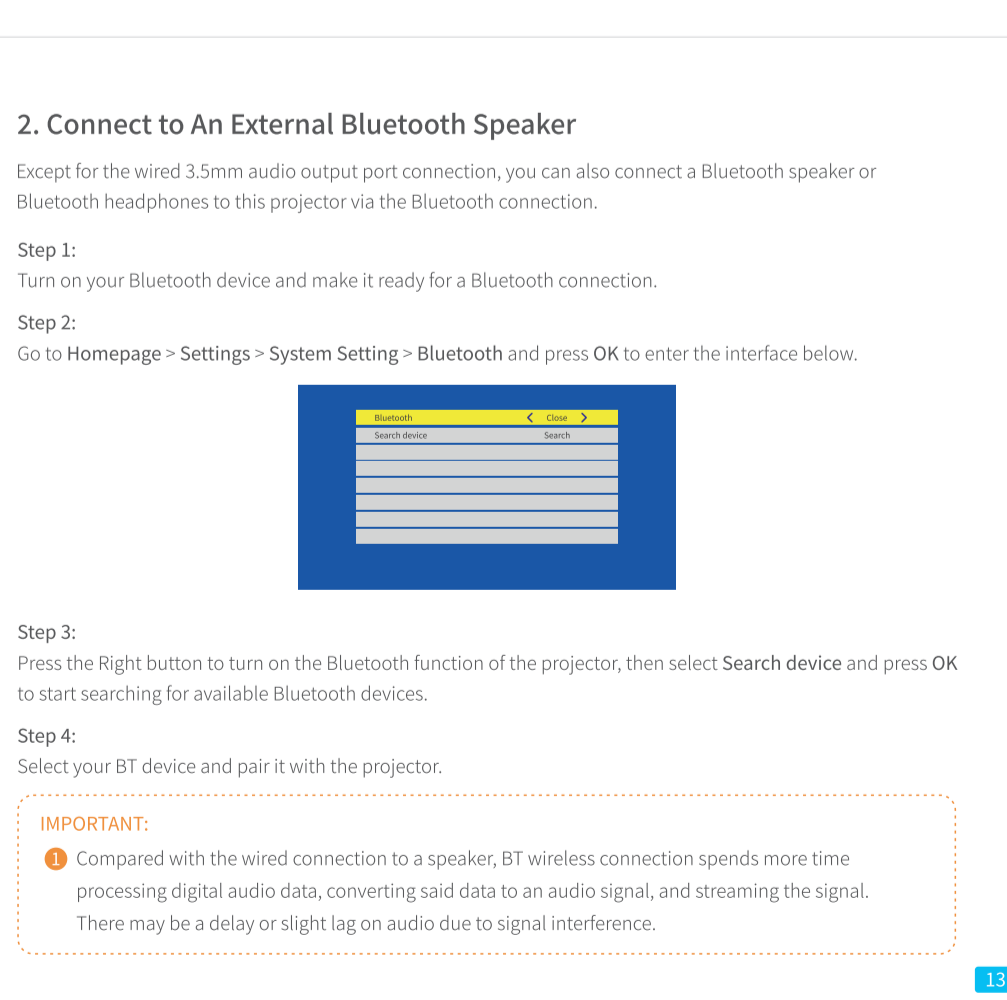
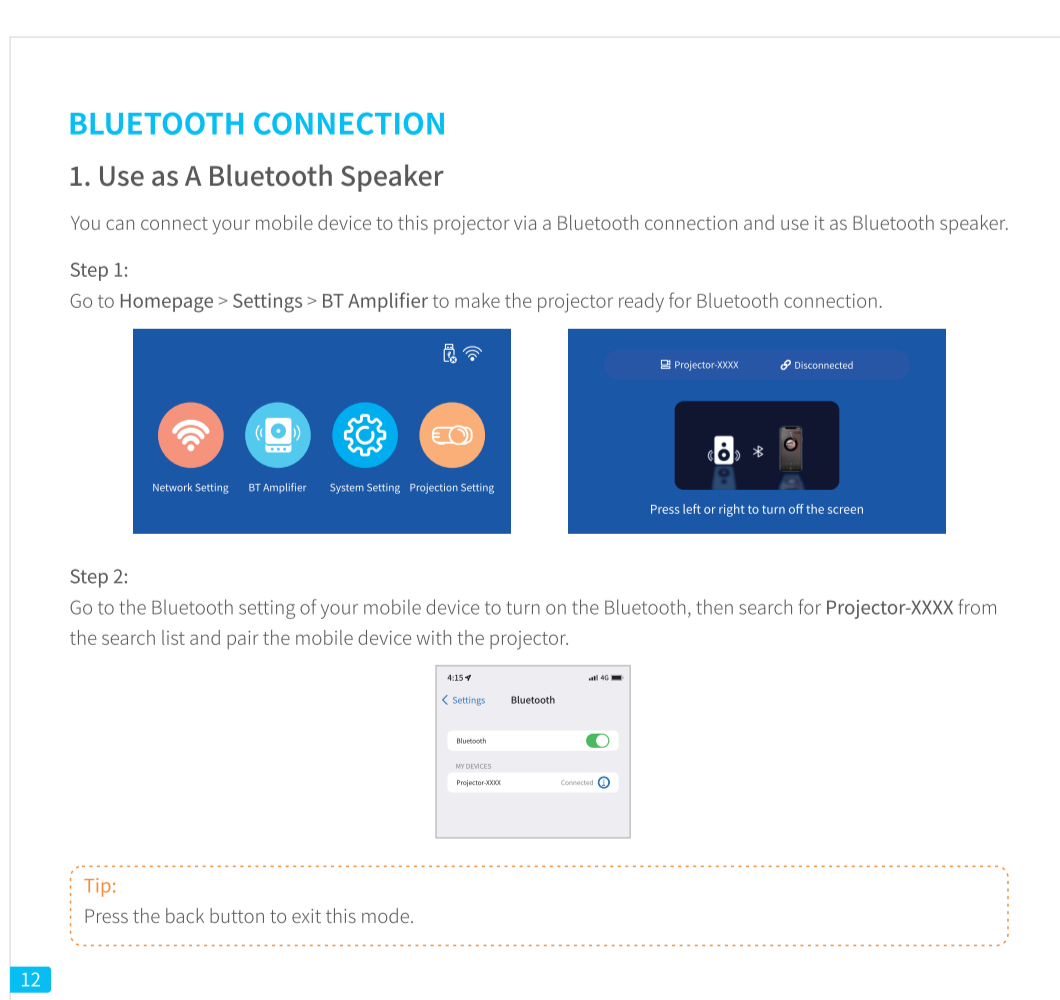
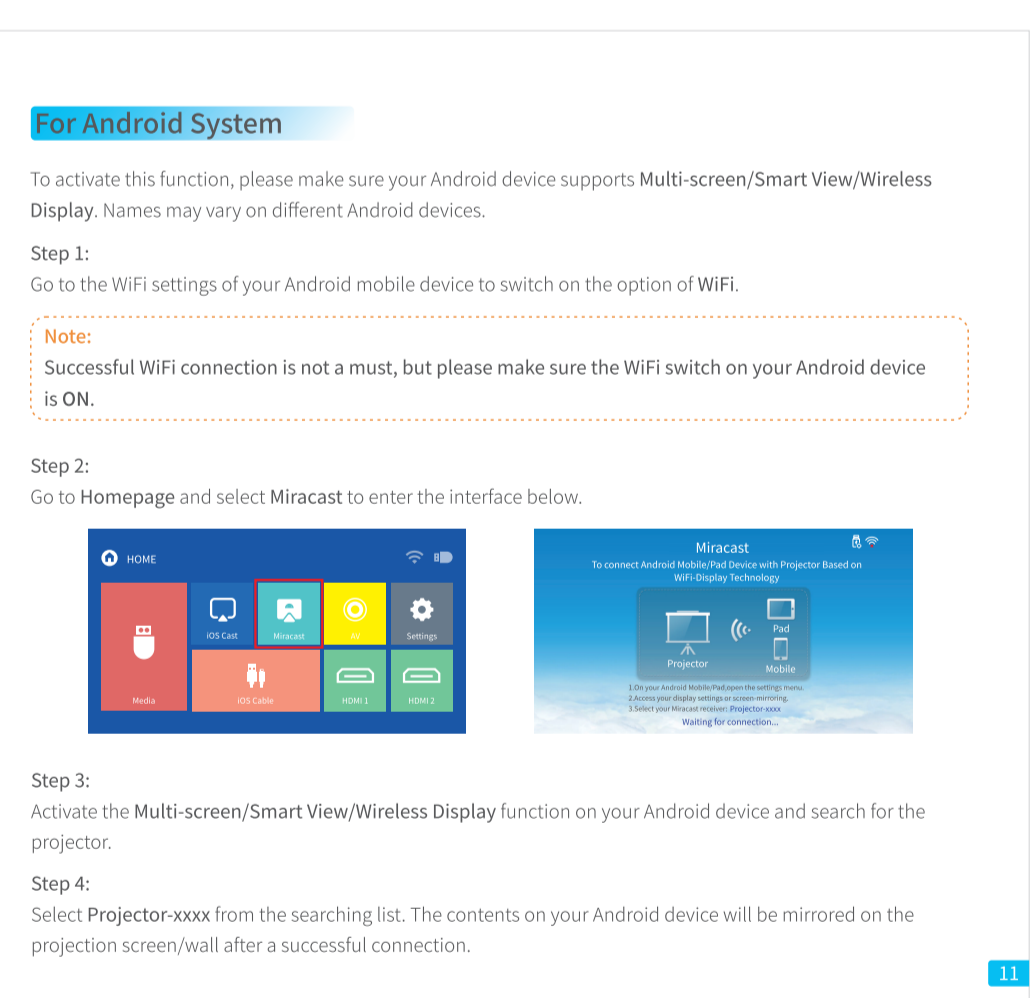
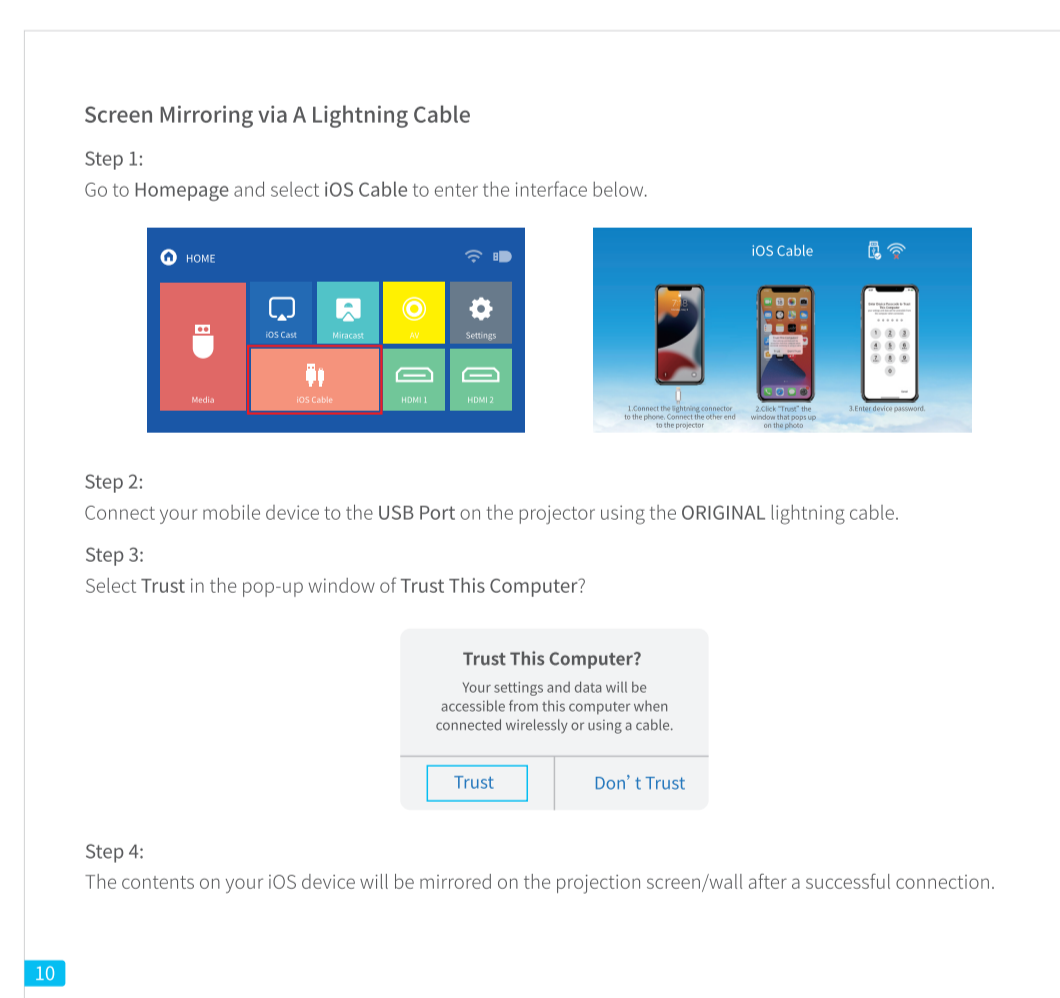
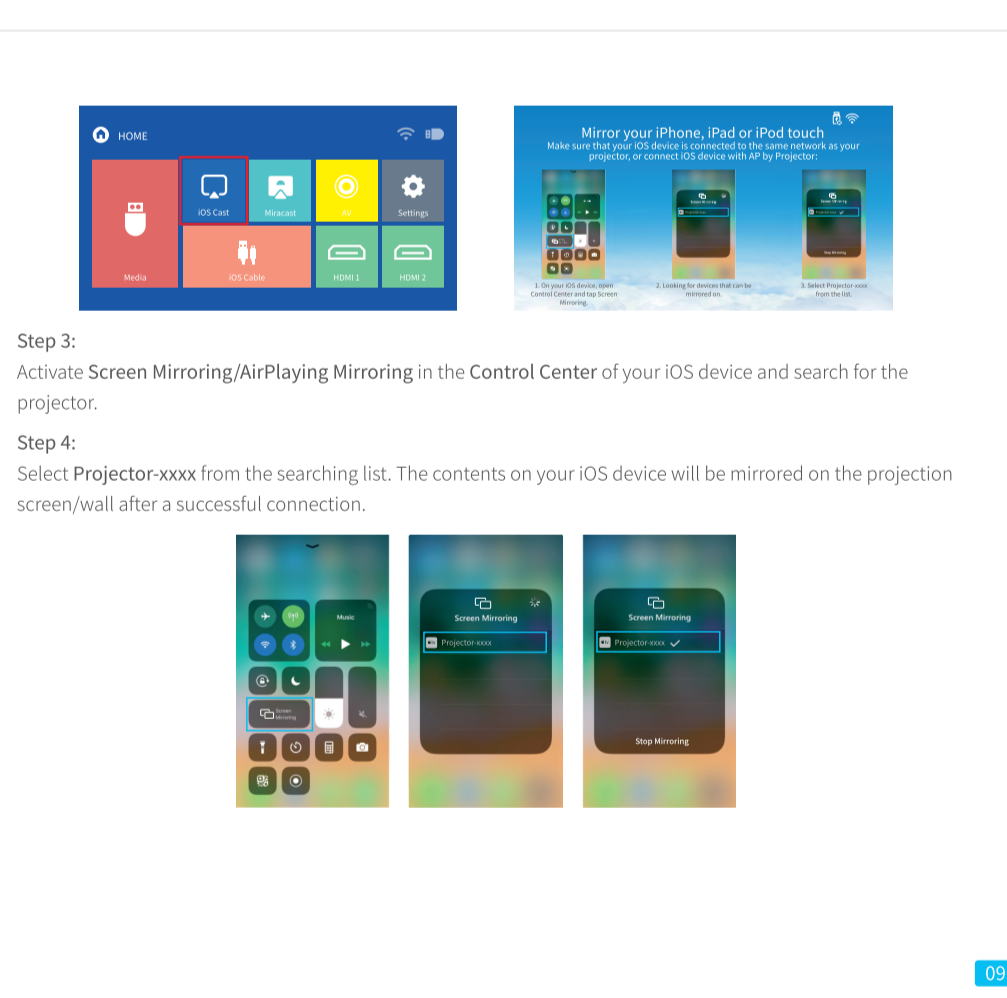
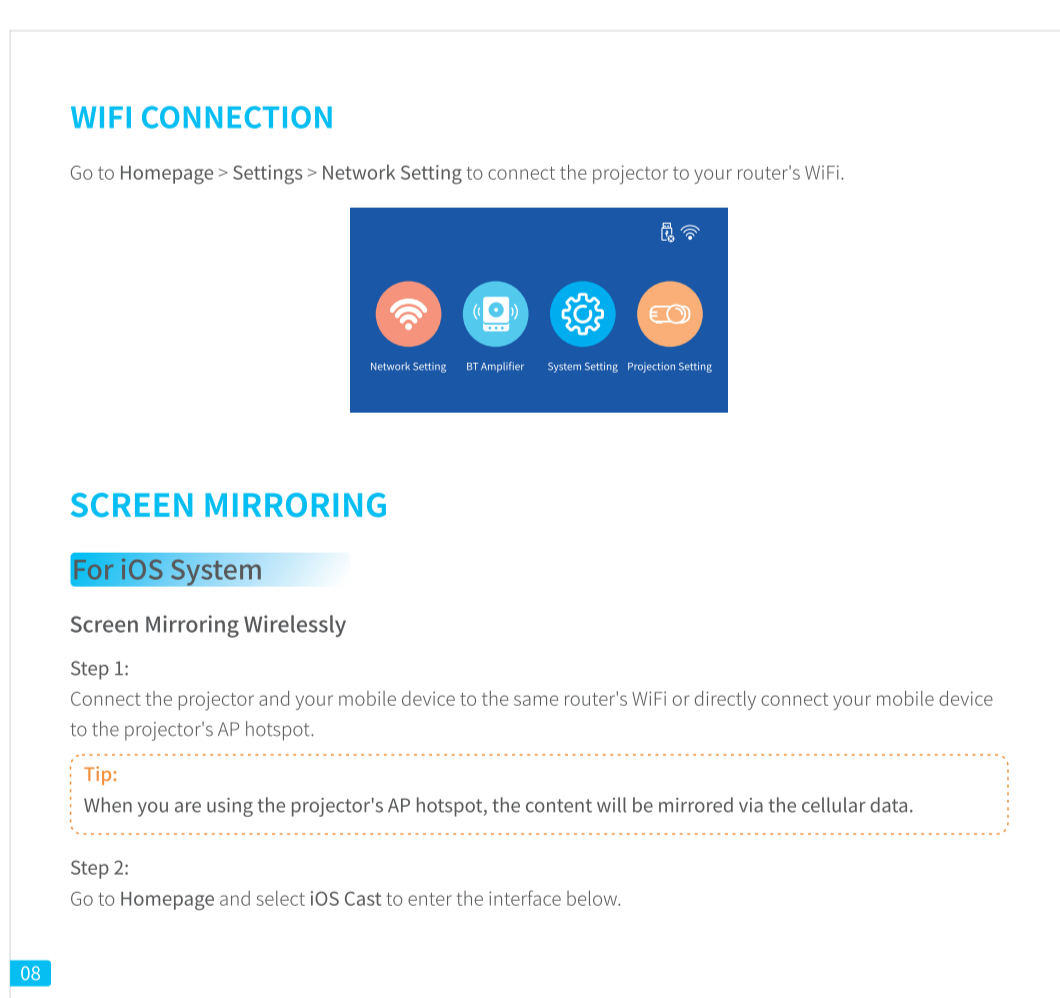
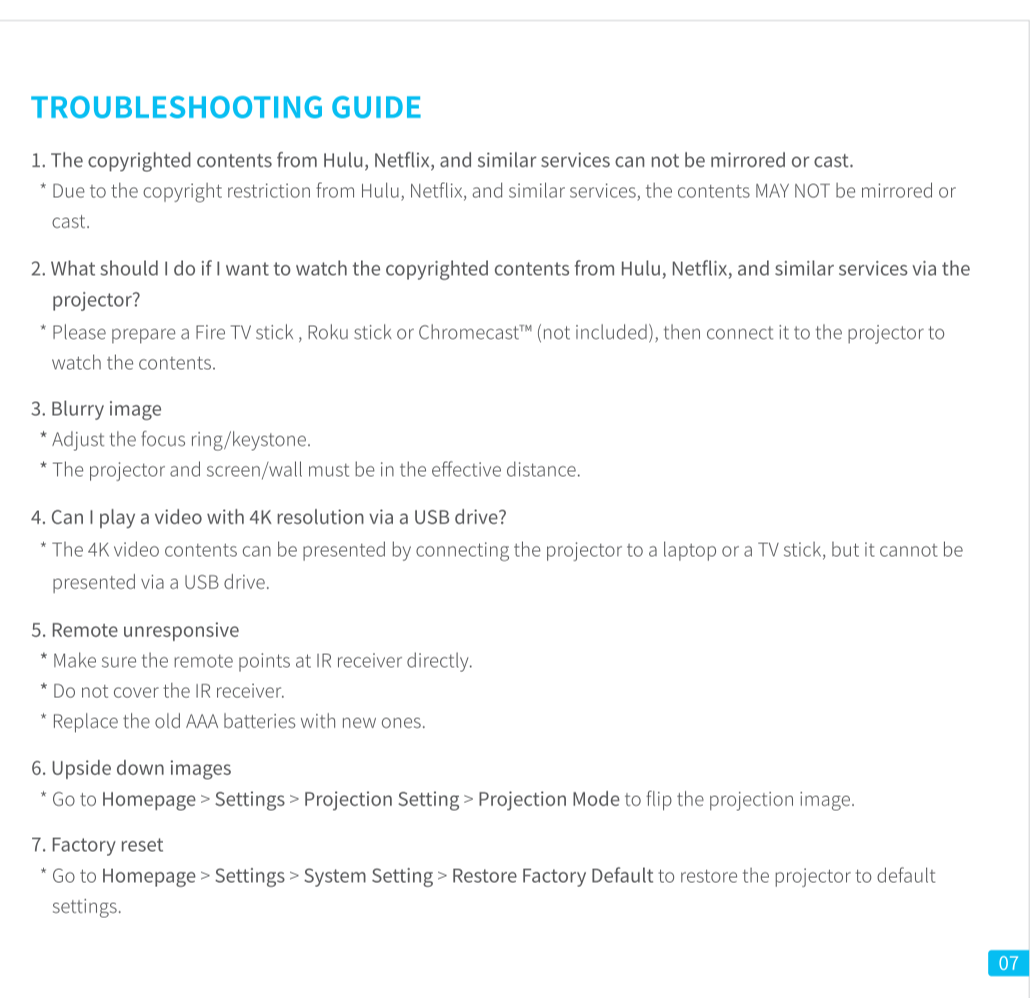
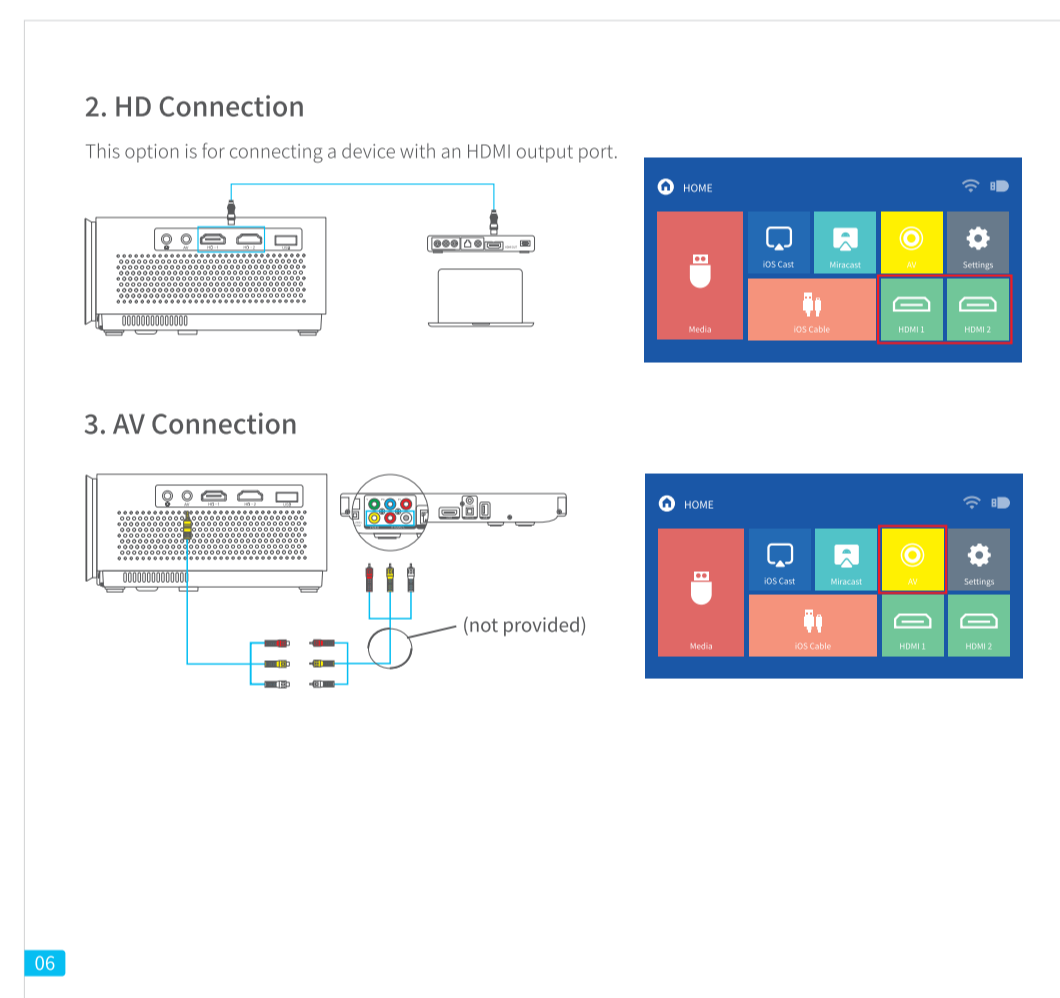
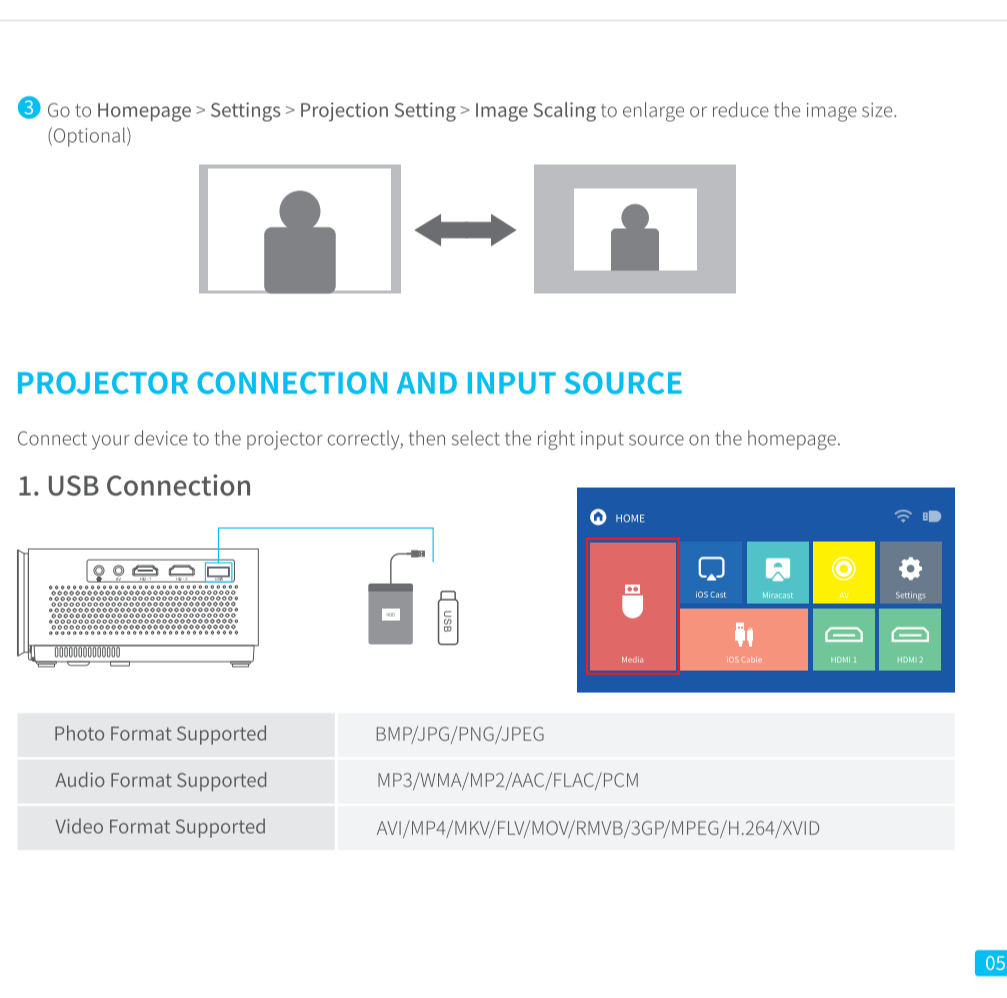
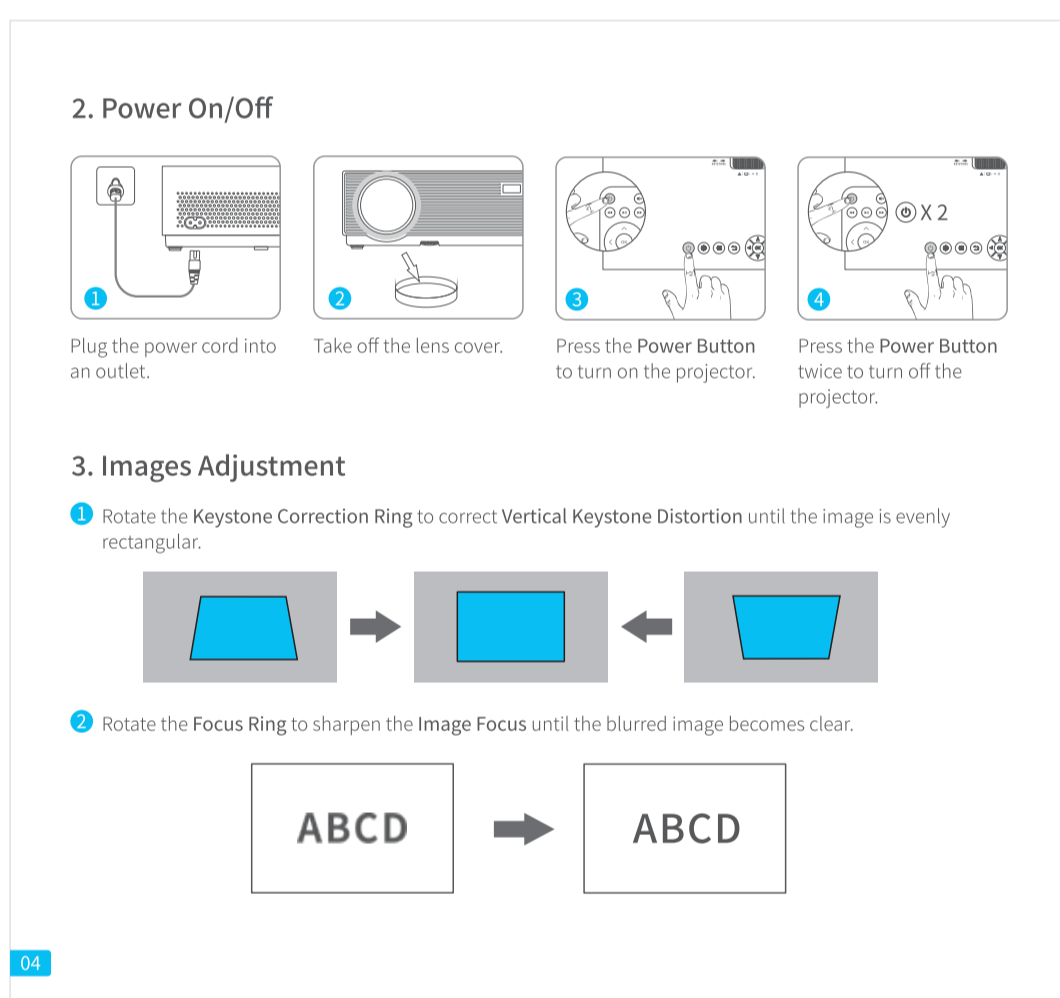
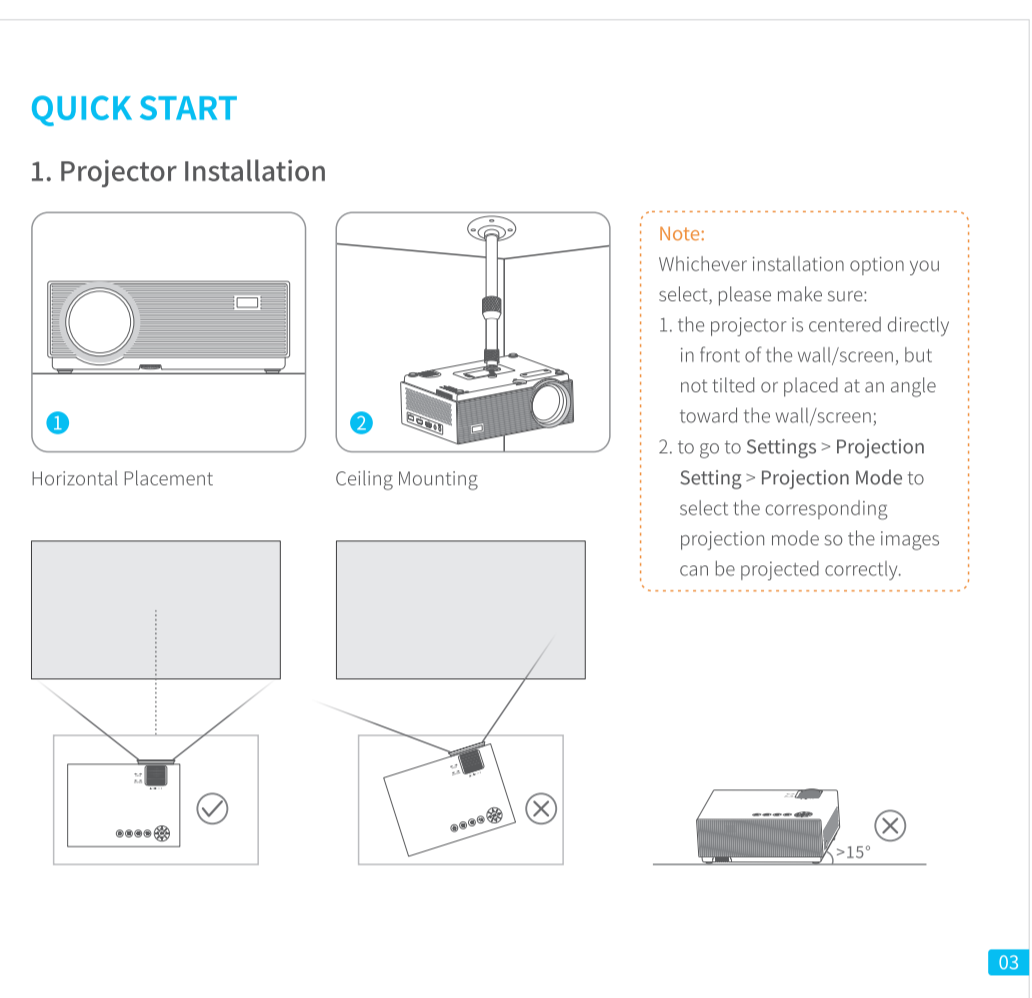
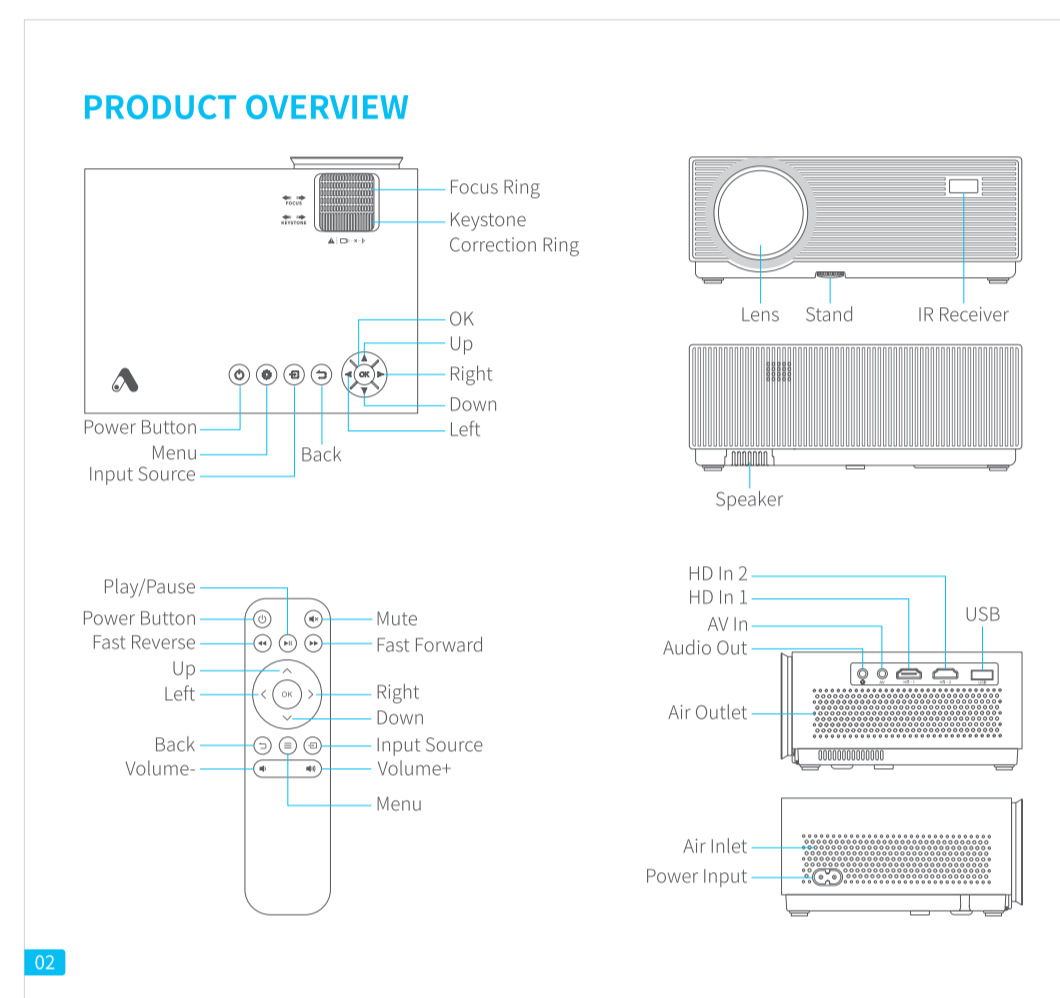
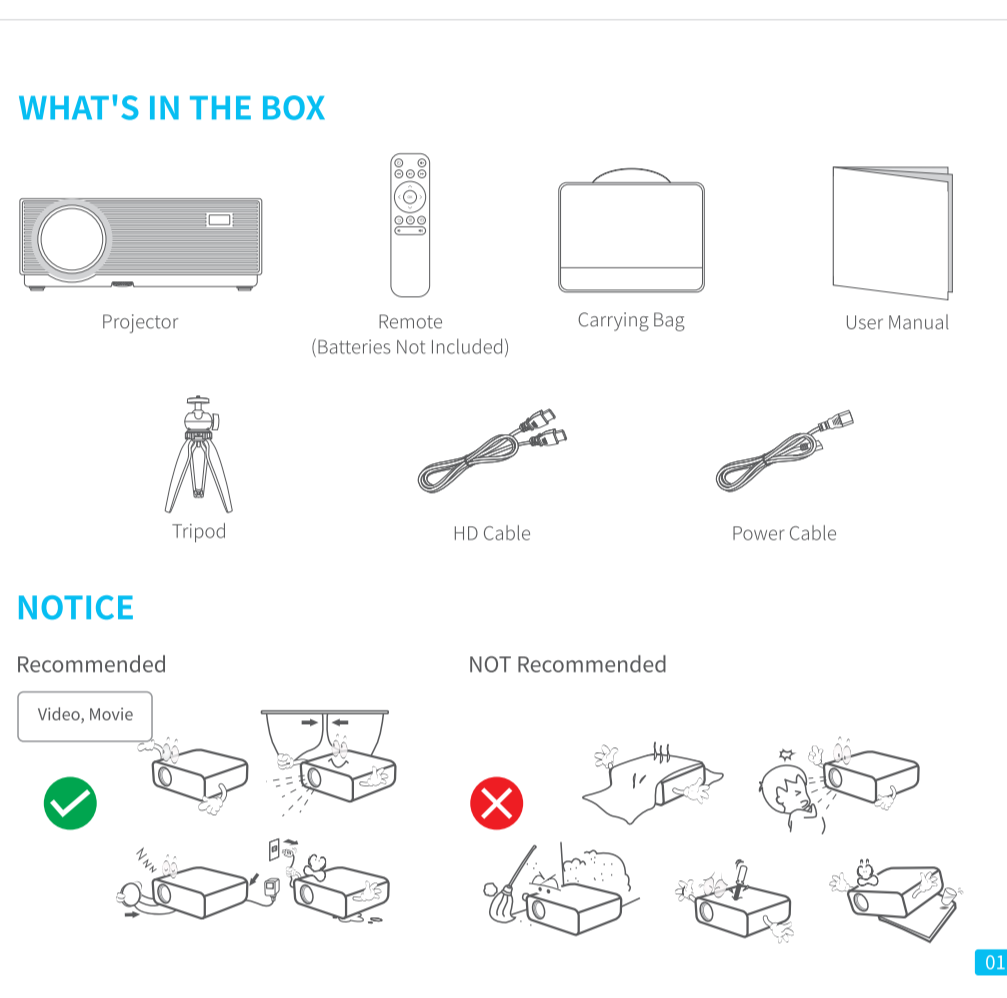


CONTENTS

WHAT'S IN THE BOX	01
NOTICE	01
PRODUCT OVERVIEW	02
QUICK START	03
1. Projector Installation	03
2. Power On/Off	04
3. Images Adjustment	04
PROJECTOR CONNECTION AND INPUT SOURCE	05
1. USB Connection	05
2. HD Connection	06
3. AV Connection	06
TROUBLESHOOTING GUIDE	06
WIFI CONNECTION	08
SCREEN MIRRORING	08
For iOS System	08
For Android System	11
BLUETOOTH CONNECTION	12
1. Use as A Bluetooth Speaker	12
2. Connect to An External Bluetooth Speaker	13
SETTINGS	15
PROJECTION DISTANCE & SIZE	16
SPECIFICATION	17



SPECIFICATION

Display Technology	LCD	Light Source	LED
Resolution	Native 1920 x 1080	Input Signal	576p, 720P, 1080i, 1080P
Installation Type	Front/Rear/Ceiling	Aspect Ratio	4:3/16:9/Auto
Focus	Manual	Keystone	±15°
Speaker	3W/40mm	Power Supply	AC 100-240V, 50/60Hz
Unit Dimension	7.8x 7.2x 3.8inches (19.7x14.5x7.1cm)	Unit Net Weight	2.2lbs(1kg)
Photo Format Supported	BMP/JPG/PNG/PEG	Audio Format Supported	MP3/WMA/MP2/AC3/LAC/PCM
Video Format Supported	AVI/MP4/MKV/FLV/MOV/MP4/3GP/MP2/AC3/H.264/720P	Ports	USB Port x 1, HD in 2, HD in 1, Audio Out x 1
Mounting Screws	1/4"	Screw Number	Not included

FCC Statement

Any Changes or modifications not expressly approved by the party responsible for compliance could void the user's authority to operate the equipment. This device complies with part 15 of the FCC Rules. Operation is subject to the following two conditions:
(1) This device may not cause harmful interference, and
(2) this device must accept any interference received, including interference that may cause undesired operation.
NOTE: This equipment has been tested and found to comply with the limits for a Class B digital device, pursuant to part 15 of the FCC Rules. These limits are designed to provide reasonable protection against harmful interference in a residential installation. This equipment generates, uses and can radiate radio frequency energy and, if not installed and used in accordance with the instructions, may cause harmful interference to radio communications. However, there is no guarantee that interference will not occur in a particular installation. If this equipment does cause harmful interference to radio or television reception, which can be determined by turning the equipment off and on, the user is encouraged to try to correct the interference by one or more of the following measures:
—Reorient or relocate the receiving antenna.
—Increase the separation between the equipment and receiver.
—Connect the equipment into an outlet on a circuit different from that to which the receiver is connected.
—Consult the dealer or an experienced radio/TV technician for help.
This equipment complies with FCC radiation exposure limits set forth for an uncontrolled environment. This equipment should be installed and operated with minimum distance 20cm between the radiator, your body, and the equipment.
This transmitter must not be co-located or operating in conjunction with any other antenna or transmitter.

ISED/C Warning

This device complies with Industry Canada license-exempt RSS (standard). Operation is subject to the following two conditions:
(1) this device may not cause interference, and
(2) this device must accept any interference, including interference that may cause undesired operation of the device.
Le présent appareil est conforme aux CNR d'Industrie Canada applicables aux appareils radio exempts de licence. L'utilisation est autorisée aux deux conditions suivantes:
(1) l'appareil ne doit pas produire de brouillage, et
(2) l'utilisateur de l'appareil doit accepter tout brouillage radioélectrique subi, même si le brouillage est susceptible d'en compromettre le fonctionnement.
This device is compliant with RF exposure guidelines, users can obtain Canadian information on RF exposure and compliance. The minimum distance from body to use the device is 20cm.
L'appareil est conforme aux directives d'exposition aux RF, les utilisateurs peuvent obtenir des informations canadiennes sur l'exposition aux RF et la conformité. La distance minimale du corps pour utiliser l'appareil est de 20cm.
This transmitter must not be co-located or operating in conjunction with any other antenna or transmitter. Cet émetteur ne doit pas être colocalisé ou fonctionner en conjonction avec une autre antenne ou autre émetteur.
Operation of this device in the band 5120-5200 MHz is restricted to indoor use only. Le fonctionnement de cet appareil dans la bande 5120-5200 MHz est limité à une utilisation en intérieur uniquement.
5GHz band(W52): Indoor use only